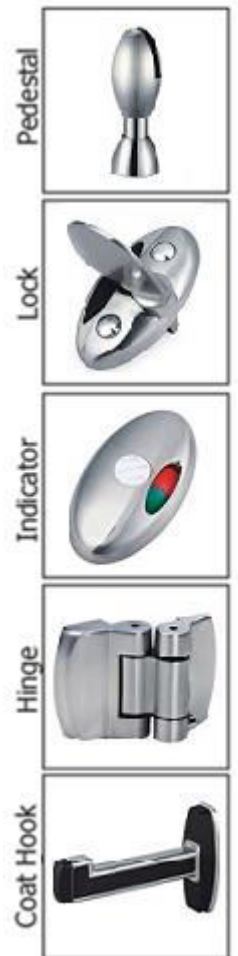


K-CDF COMPACT

The K-CDF Compact system features Swiss CDF compact laminate, a 13mm compacted, black coloured wood fibreboard suitable for a wide range of applications and environments. Stability, robustness, scratch resistant, splash water resistant and flame retardant are among the characteristics of this natural wood material. This is a very affordable compact laminate alternative with a stylish colour range making it very popular in general purpose areas, high humidity, dry environments and schools. The K-CDF system features a paddle shift locking system, adjustable pedestals, bolt through security fixings, spring loaded hinges and cast polished hardware.

(Swiss CDF not suitable for Shower applications).



APPLICATIONS

General Purpose
High Humidity or dry areas
Schools

FEATURES

Cast or Twin bullet style pedestals on request
Anodised aluminium channels
Cast locks, coat hooks and fastenings
Bolt through Spring loaded open or close hinges

STANDARD MATERIALS

13mm thick Swiss CDF Compact laminated board
Non-standard facing panels made to order
Edges-Machined compact laminate

Optional Accessories:

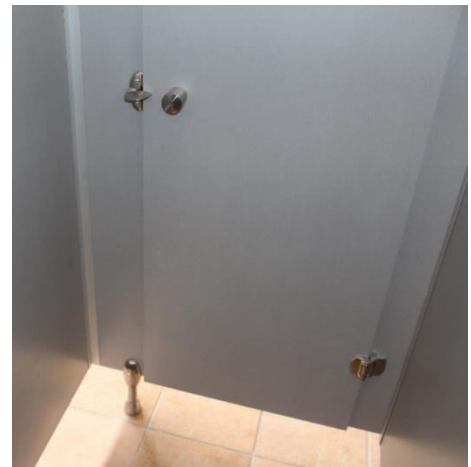
Toilet roll holders
Grab Rails
Pull Handles
Shower seats and brackets
Paper towel dispenser
Waste receptacles
Not included unless otherwise stated



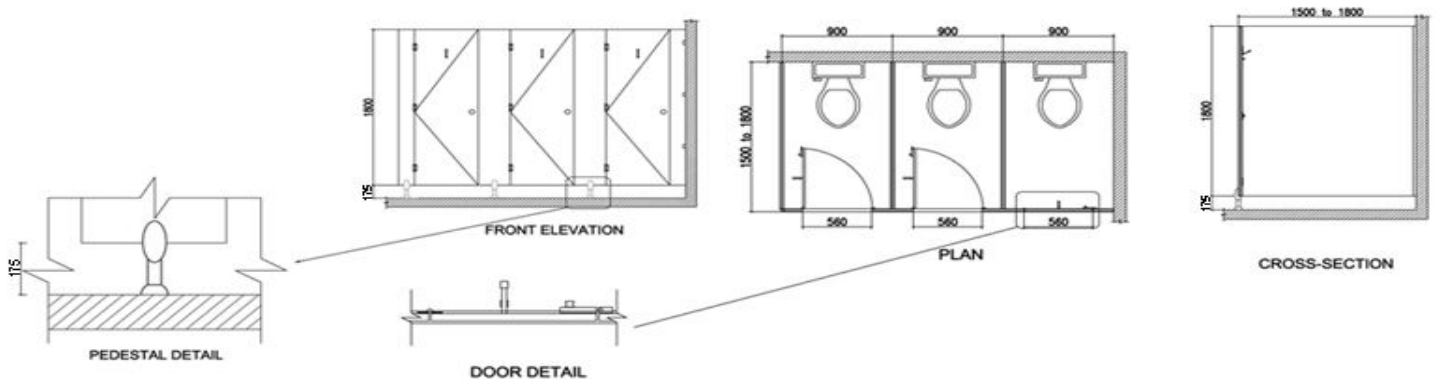
DIMENSIONS AND INSTALLATION

Width and depth vary to suit application
Doors: Standard 600mm opening
Disabled 800mm minimum opening
Sliding doors on request
Standard height is 1975mm with 175mm floor clearance

KerMac include installation within the Auckland region. Alternatively, cubicles can be flat packed and shipped anywhere in Australasia with installation instructions included.



CAD DRAWING



Larger CAD Drawings available on www.kermac.co.nz in PDF, DWG and DXF formats