



EDGETEC® MATADOR® SERIES II MINI POST BALUSTRADE

THE LATEST IN STAINLESS STEEL MINI POST TECHNOLOGY

Edgetec® Matador® Series II Mini Post is the next generation in frameless glass balustrade and pool fencing systems.

+ PERFECT FOR DECKS, BALCONIES, AND POOLS

Matador® Series II is an elegant mini post suitable for a wide variety of situations that demand nothing but the best in design aesthetic.

+ MADE BEAUTIFUL, FOR THE TOUGHEST NZ ENVIRONMENTS

The Matador® Series II is made from 2205 Duplex Stainless Steel, with a polished finish, satin finish, or powder coated choice of colour which provides extreme marine grade durability with an elegant look. Thus, creating the perfect mini post for pool areas or coastal properties requiring premium balustrading to match the views.



+ SUITABLE FOR A WIDE RANGE OF GLASS TYPES

Matador® Series II is a highly versatile product that can be used with glass thicknesses ranging from 12mm - 15mm, using either toughened glass, or SentryGlas™. Use of Interlinking handrails are required for 12 & 15mm Toughened Glass balustrade installations (Excluding pool fences).

+ FACE OR TOP FIXED

Along with easy installation, Matador® Series II is an incredibly versatile system that can become a feature of any architectural design.

Available in a selection of fixing options with either a single hidden-fixing, a hidden-fixing base plate, or face-fixed to the edge of a structure.



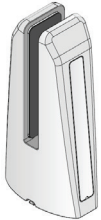
Includes NZ Patent # 618520
NZ Patent Application #816340

FRAMELESS GLASS BALUSTRADE SYSTEMS

The Edgetec® Matador® Series II Mini Post system is technically advanced as well as elegantly finished.

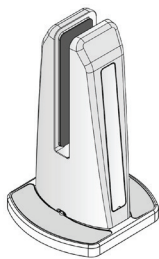
- + Made with 2205 Duplex Stainless Steel for marine grade durability (Powder coating also available)
- + Designed with cover plates to hide all adjustment points and fixings
- + Suitable for Occupancy A, A Other, C3, B, E
- + No glass holes or cutouts required

The system has an interchangeable post with three base options to suit all situations. Designed with our patented panel adjustment feature and a brand **NEW** patent-pending base adjustment system.



HIDDEN FIXING - POOL FENCING

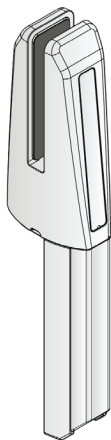
Primarily for pool fencing, Matador Series II has the ability to be installed with no visible baseplate, while maintaining full adjustability of the base for a perfectly aligned finish.



4-HOLE BASEPLATE - BALUSTRADING AND POOL FENCING

The 4-hole baseplate utilises the same adjustability features as the Hidden Fixing, with a wide range of applications.

All fixing points have matching cover plates to hide fasteners and adjustment points.



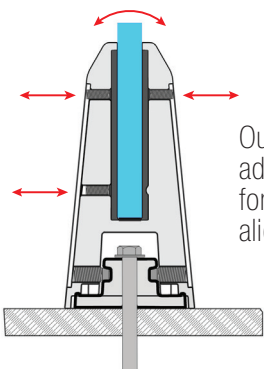
FACE FIX - BALUSTRADING AND POOL FENCING

The Face Fix base does not have the base adjustability of the Top Fix versions, but retains panel adjustability, ensuring a flush and elegant connection between post and Face Fix base.

ADJUSTMENTS

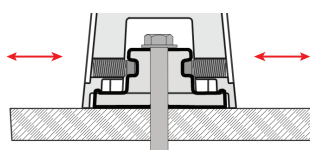
The Matador® Series II has an all new post and base design that provides installers with even more points of adjustment as well as the existing glass panel alignment points.

Panel Adjustment



Our patented 3-point panel adjustment system allows for forward-back and angular alignment of the glass panel.

Base Adjustment



The NEW patent pending base alignment system for Matador Series II allows for forward-back fine tuning of the entire Mini Post +/- 2mm.

Includes NZ Patent # 618520
NZ Patent Application #816340