



BENTLEY®

LOOK SHARP, SEEING THINGS, AND TRAINED EYE

MODERN CURATOR COLLECTION



BENTLEY



Look Sharp, Seeing Things, and Trained Eye

You are a Modern Curator.

Today, everyone is a curator—culling, convening, and framing viewpoints while widening perspectives, shaping and shifting how others see and experience the world. These curated points of view, and the stories they tell, fuel innovation, creativity and collaboration.

Moody and a little edgy but created to coexist in engaging ways. The Modern Curator Collection No.1 is a selection of three styles designed to resonate with a generation grappling with unprecedented change and unparalleled creativity.

Look Sharp - a finely composed texture, formal and orderly, in a slightly less predictable blend of soft, pooling hues and shades. Seeing Things - like found objects bound together, positive and negative spaces form geometries that are entirely new, yet deeply familiar. Trained Eye - look closely and see dashed lines that seem gestural, almost delicate. Stand back to see how they assemble, establishing a sweeping scale.

Look Sharp. Seeing Things. Trained Eye. The eyes have it. And the Modern Curator frames it. Long view, side view, rear view, world view. A point of view.



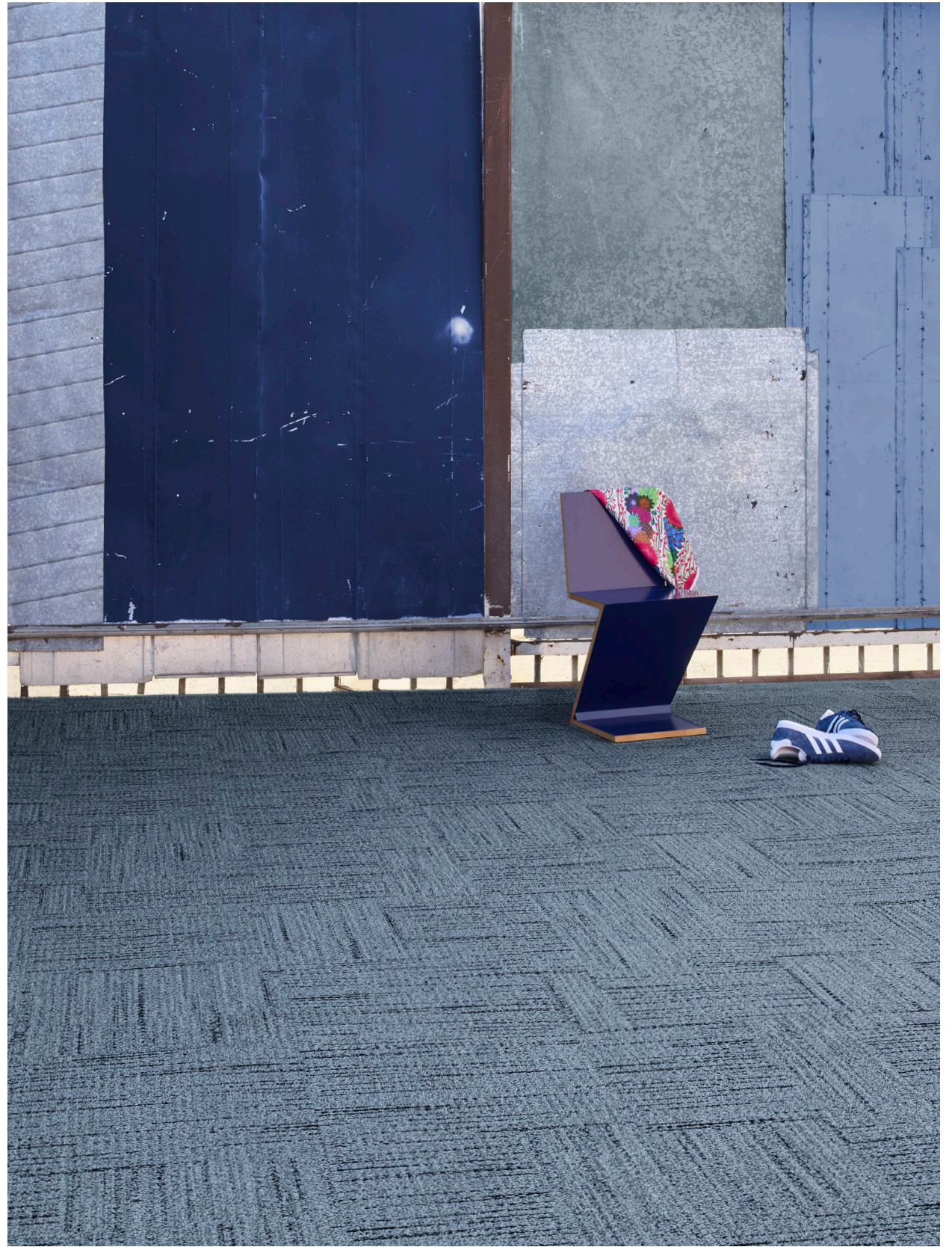
SEEING THINGS™ 6AST20, WHISPER 400085, 18 IN X 36 IN - MONOLITHIC



LOOK SHARP™ 6ALS20, MURMUR 400087, 18 IN X 36 IN - HERRINGBONE



SEEING THINGS 6AST20, SMOLDER 400092, 18 IN X 36 IN - BRICK



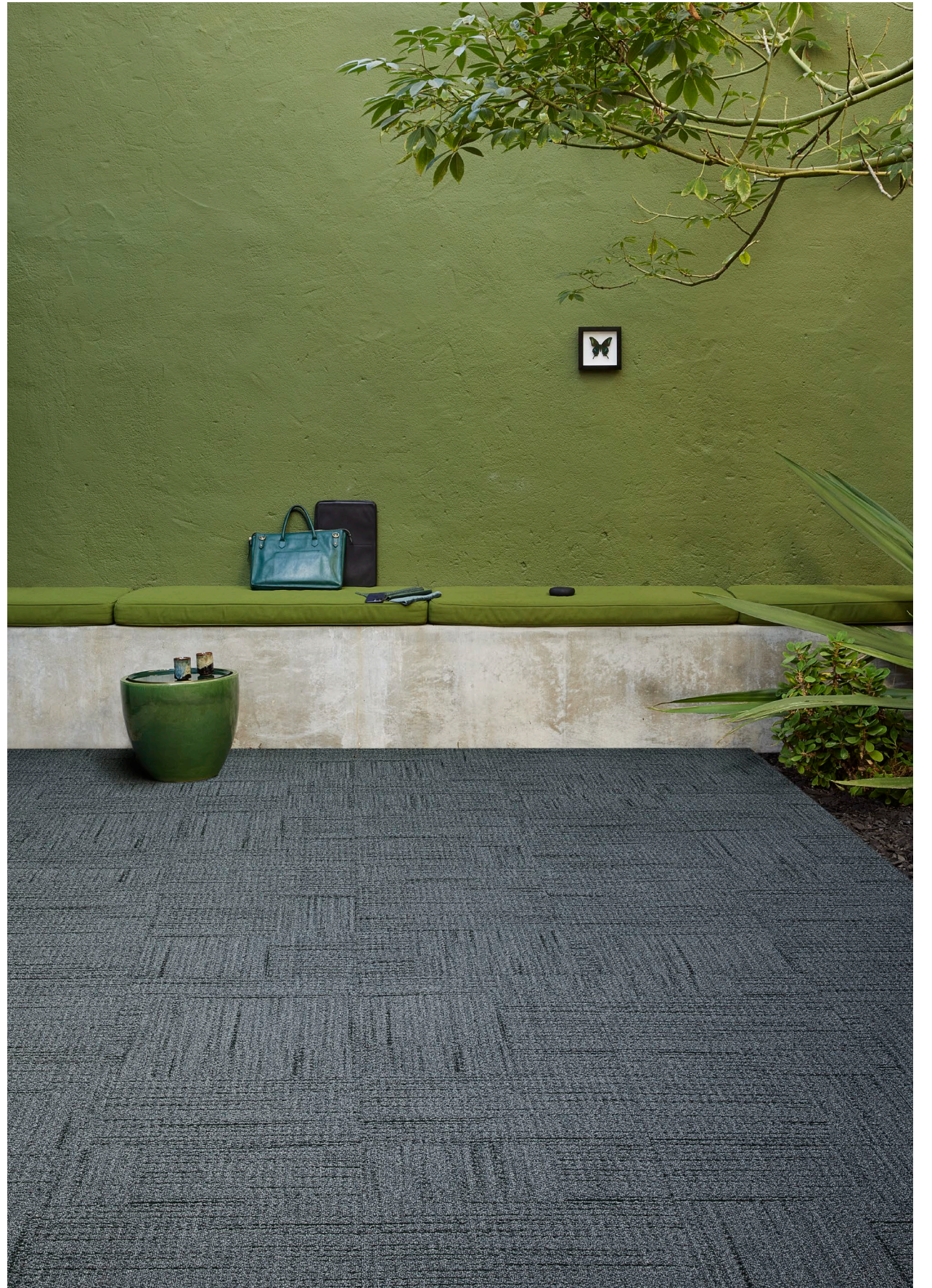
TRAINED EYE™ 6ATE24, DIRECT 400091, 18 IN X 36 IN - MONOLITHIC



TRAINED EYE 6ATE24, MUSINGS 400093, 12 FT BROADLOOM



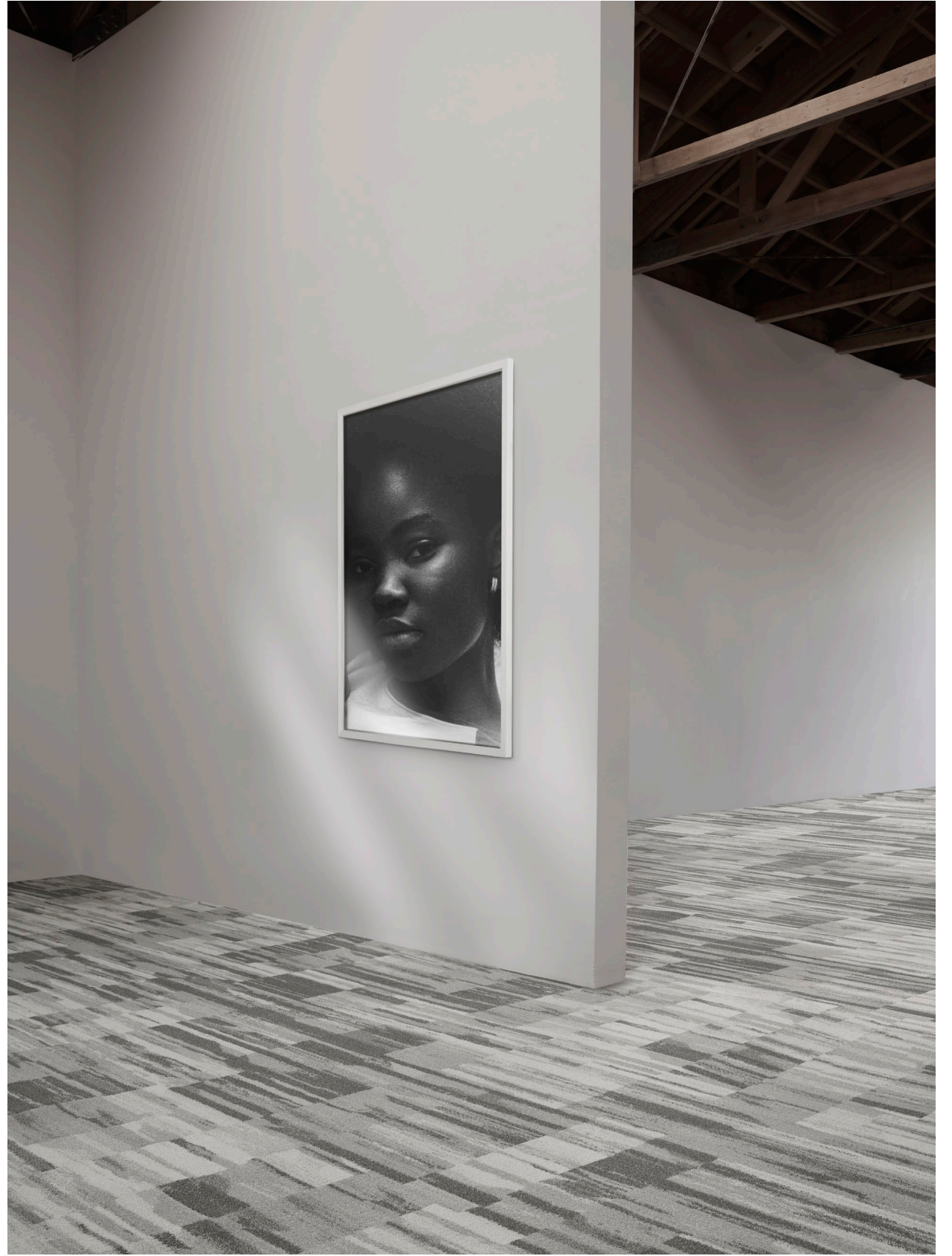
LOOK SHARP 6ALS20, PROVOCATIVE 400096, 18 IN X 36 IN - ASHLAR



TRAINED EYE 6ATE24, IMPRESSIONS 400088, 18 IN X 36 IN - MONOLITHIC

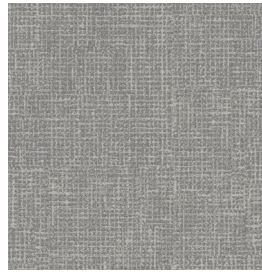


SEEING THINGS 6AST20, INTUITION 400090, 24 IN X 24 IN - QUARTER TURN

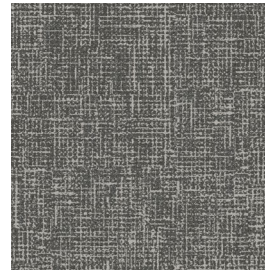


SEEING THINGS 6AST20, INTUITION 400090, 24 IN X 24 IN - MONOLITHIC

LOOK SHARP™



Whisper 400085



Perception 400086



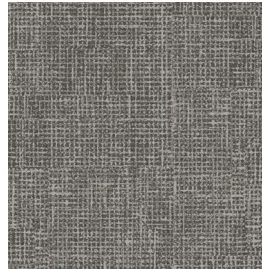
Murmur 400087



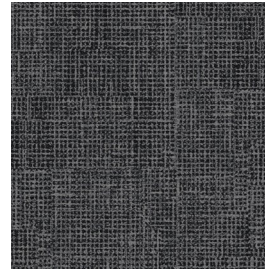
Impressions 400088



Hint 400089



Intuition 400090



Direct 400091



Smolder 400092



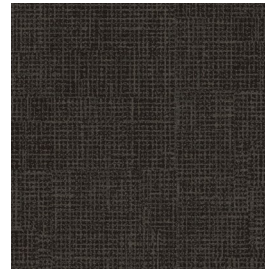
Musings 400093



Risqué 400094



Hearsay 400095



Provocative 400096

Style Number 6ALS20
Product Construction Tufted Textured Loop
Fiber Bentley Premium™ Nylon
Dye Method Solution Dyed

For complete product specifications, visit bentleymills.com

PVC-Free Backing Options
 AFIRMA II™ Hardback Tile
 AFFIX™ Hardback Tile
 LuxFelt™ Cushion Tile
 NexStep® Cushion Tile
 High PerformancePC Broadloom

Size Options
 18 in x 36 in, 24 in x 24 in
 18 in x 36 in, 24 in x 24 in
 18 in x 36 in, 24 in x 24 in
 18 in x 36 in, 24 in x 24 in
 12 ft

SEEING THINGS™



Whisper 400085



Perception 400086



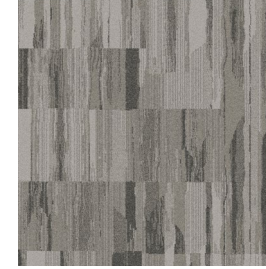
Murmur 400087



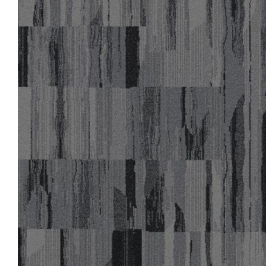
Impressions 400088



Hint 400089



Intuition 400090



Direct 400091



Smolder 400092



Musings 400093



Risqué 400094



Hearsay 400095



Provocative 400096

Style Number 6AST20
Product Construction Tufted Textured Loop
Fiber Bentley Premium™ Nylon
Dye Method Solution Dyed

For complete product specifications, visit bentleymills.com

PVC-Free Backing Options
 AFIRMA II™ Hardback Tile
 AFFIX™ Hardback Tile
 LuxFelt™ Cushion Tile
 NexStep® Cushion Tile
 High PerformancePC Broadloom

Size Options
 18 in x 36 in, 24 in x 24 in
 18 in x 36 in, 24 in x 24 in
 18 in x 36 in, 24 in x 24 in
 18 in x 36 in, 24 in x 24 in
 12 ft

Recommended Carpet Tile Installation Methods - Look Sharp

18 in x 36 in



Ashlar Brick Herringbone Monolithic

24 in x 24 in



Brick Monolithic Quarter Turn Random

Recommended Carpet Tile Installation Methods - Seeing Things

18 in x 36 in

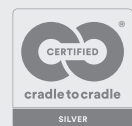


Ashlar Brick Herringbone Monolithic

24 in x 24 in



Brick Monolithic Quarter Turn Random

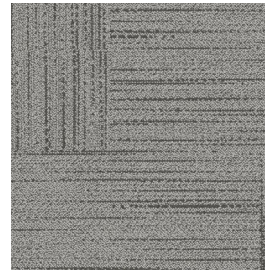


CE Mark excludes AFFIX™ Hardback Tile.

TRAINED EYE™



Whisper 400085



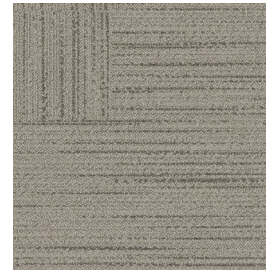
Perception 400086



Murmur 400087



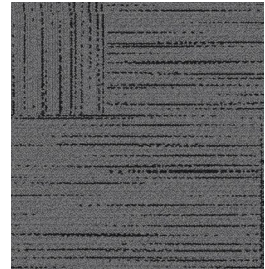
Impressions 400088



Hint 400089



Intuition 400090



Direct 400091



Smolder 400092



Musings 400093



Risqué 400094



Hearsay 400095



Provocative 400096

Style Number 6ATE24
Product Construction Tufted Textured Loop
Fiber Bentley Premium™ Nylon
Dye Method Solution Dyed

PVC-Free Backing Options
 AFIRMA II™ Hardback Tile
 AFFIXX™ Hardback Tile
 LuxFelt™ Cushion Tile
 NexStep® Cushion Tile
 High PerformancePC Broadloom

Size Options
 18 in x 36 in, 24 in x 24 in
 18 in x 36 in, 24 in x 24 in
 18 in x 36 in, 24 in x 24 in
 18 in x 36 in, 24 in x 24 in
 12 ft

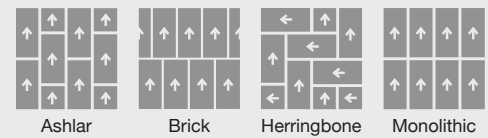
For complete product specifications, visit bentleymills.com



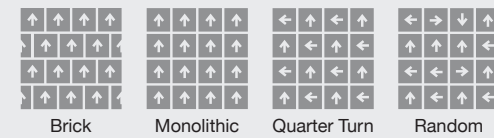
LOOK SHARP 6ALS20, RISQUÉ 400094, 12 FT - BROADLOOM

Recommended Carpet Tile Installation Methods - Trained Eye

18 in x 36 in



24 in x 24 in



The printed images may not be an accurate reproduction of the product's actual colorways. We strive to offer an authentic representation, but images may vary according to press run and location lighting. These images are intended as a guide only. If you would like a sample of this product, please call Customer Care at 800.423.4709.

Bentley's carpet products are manufactured in our California mill, a LEED Existing Buildings: Operations and Maintenance Gold certified facility. Product Certifications and Declarations can be found under the Sustainability section of our website. For more information, including additional backing options, detailed specifications, and warranties, please visit bentleymills.com.

Carpet specifications and components are subject to normal manufacturing tolerances and may change without notice. Product warranted in accordance with the terms and conditions of Bentley's standard printed warranty in effect at time product is sold. All other warranties, including without limitation any implied warranties of merchantability or fitness for a particular purpose, are hereby disclaimed. Made in USA. Warning: unauthorized reproduction of this carpet design constitutes copyright infringement. ©2023 Bentley Mills, Inc.

Need additional samples or information? 800.423.4709 | bentleymills.com
 (BK-CP-0123)

BENTLEY®

BENTLEY®

800.423.4709 | BENTLEYMILLS.COM

14641 EAST DON JULIAN ROAD, CITY OF INDUSTRY, CALIFORNIA 91746