

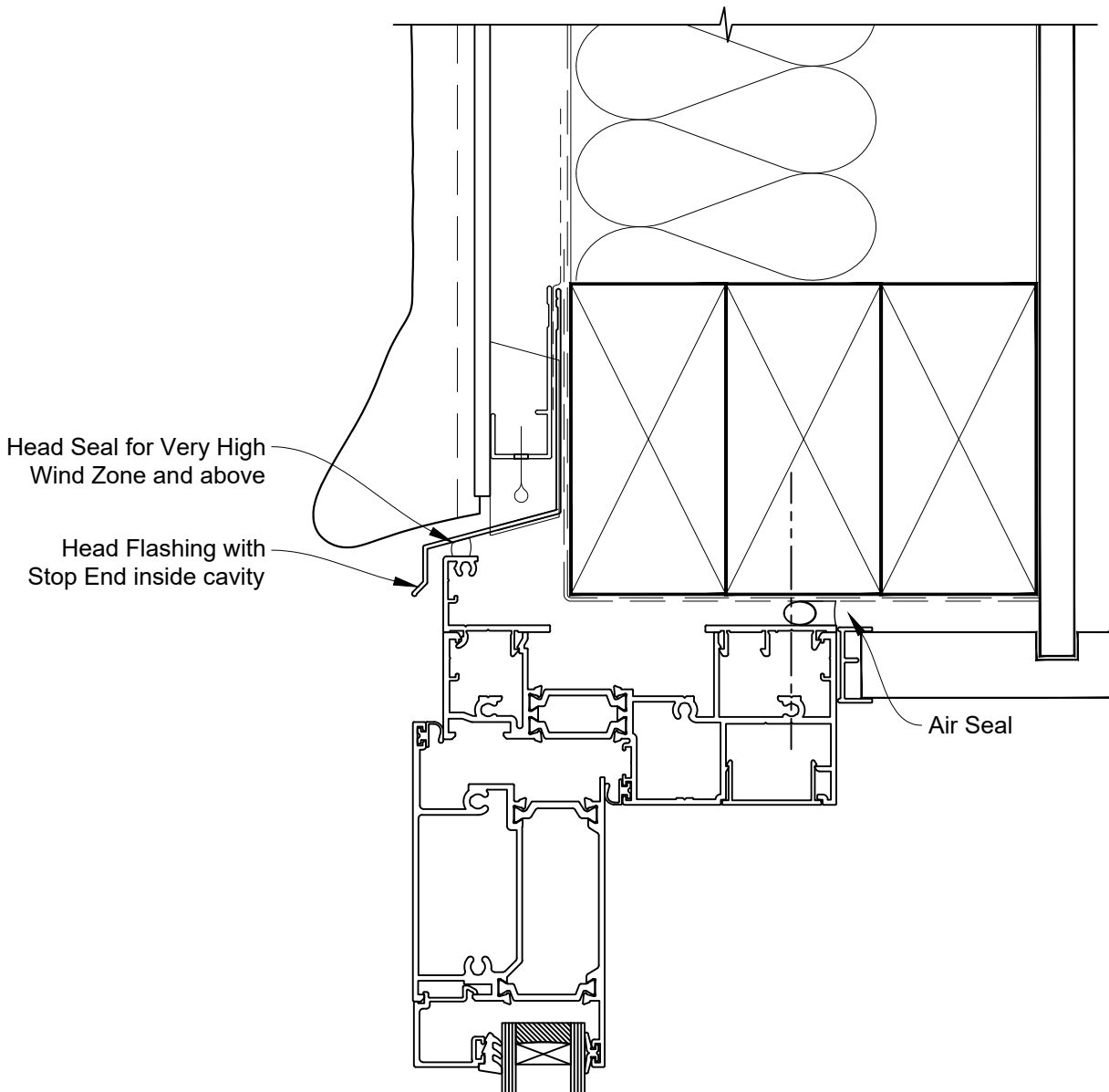


INSTALLATION DETAIL - ARCHITECTURAL THERMAL HEART HINGED DOOR OPEN OUT ON STUCCO CAVITY CONSTRUCTION

Date: 01.09.23

Scale: 1:2

CAD Ref.: TAHOST-CH



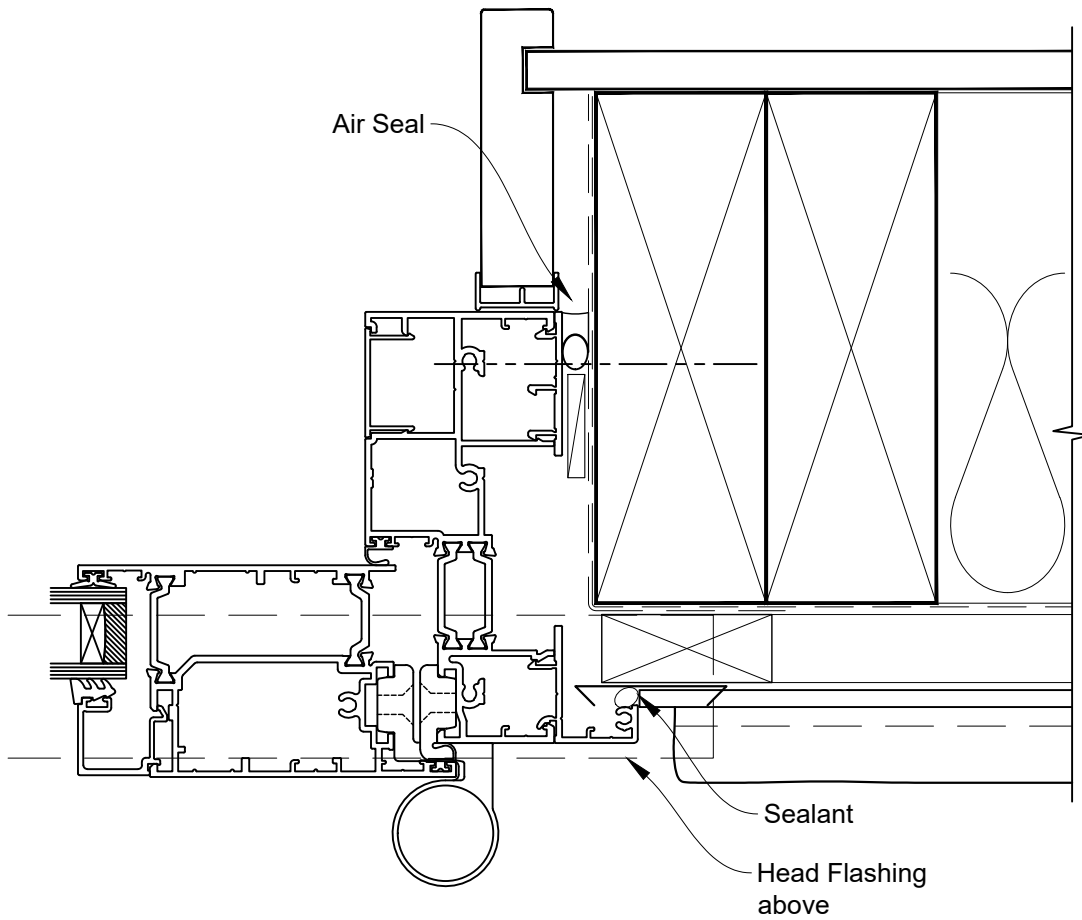


INSTALLATION DETAIL - ARCHITECTURAL THERMAL HEART HINGED DOOR OPEN OUT ON STUCCO CAVITY CONSTRUCTION

Date: 01.09.23

Scale: 1:2

CAD Ref.: TAHOST-CJ





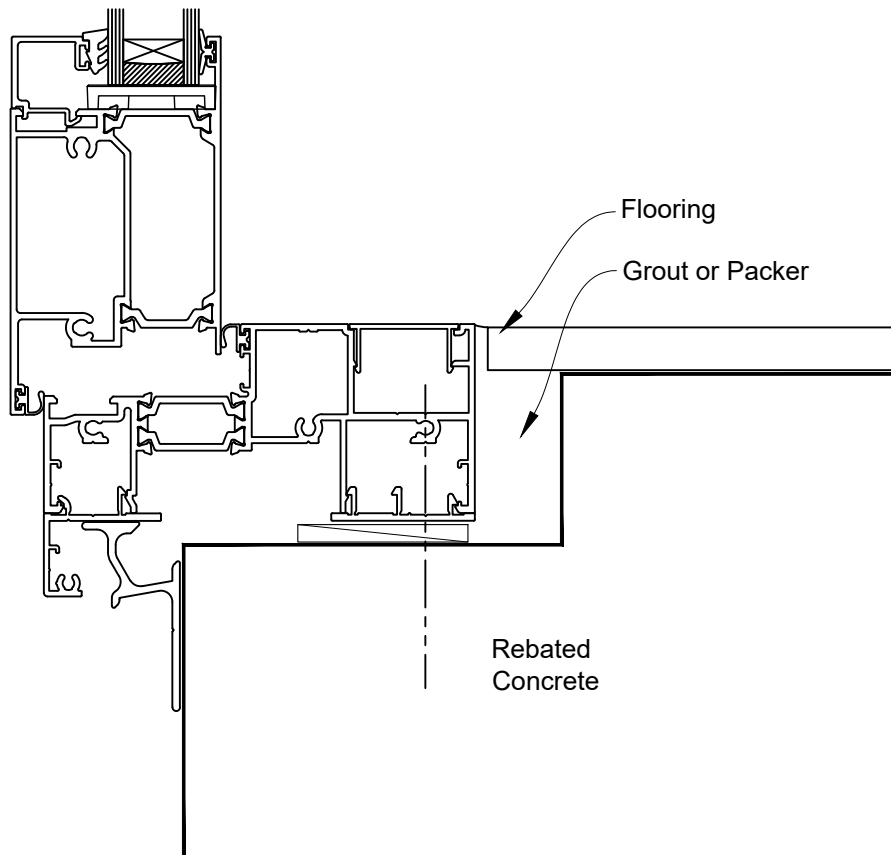
INSTALLATION DETAIL - ARCHITECTURAL THERMAL HEART HINGED DOOR OPEN OUT ON STUCCO CAVITY CONSTRUCTION

Date: 01.09.23

Scale: 1:2

CAD Ref.: TAHOST-CS

FLANGED BOTTOM RAIL OPTION ON FACING INFILL





INSTALLATION DETAIL - ARCHITECTURAL THERMAL HEART HINGED DOOR OPEN OUT ON STUCCO CAVITY CONSTRUCTION

Date: 01.09.23

Scale: 1:2

CAD Ref.: TAHOST-CS2

FLUSH BOTTOM RAIL OPTION ON SILL TRAY

