

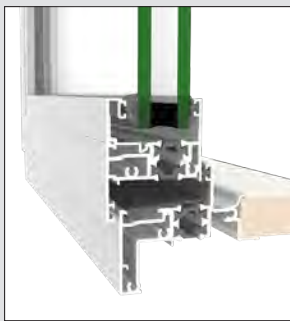
Awning and Casement Windows



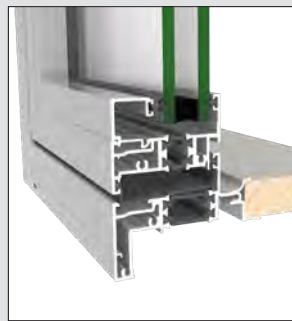
Metro Series ThermalHEART® window frame (fixed light).

Key Features

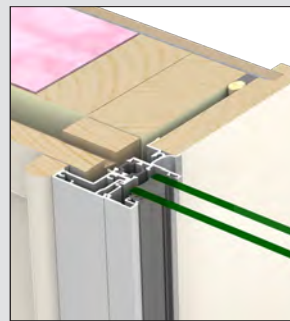
- Awning and casement windows have a facing option and a flush, non-facing option
- Facing sashes available in varying performance grades
- Mullions and transoms with external fins or internal boxes available
- Concealed drainage option available
- Maximum glass thickness of 44mm IGU – compliance with NZBC clause H1 Energy Efficiency requires high performing Low-E double glazing
- Vent options – Aerovent, SashVent and Ventient.



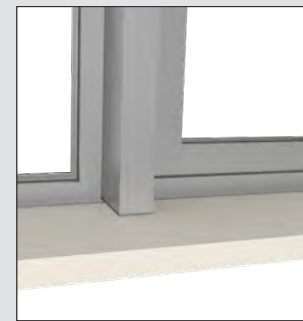
44mm window frame with facing sash.



56mm window frame with flush sash.



Awning window jamb section.



Internal box mullion option.

Specifications

Dimensions

Awning and casement windows have a recommended size of 1400 mm high x 800mm wide

Maximum Glass Thickness

44mm IGU

Thermal Values

Complies with the Construction R-values provided in NZBC clause H1, Appendix E, table E1.1.1.

Performance

Tested to Extra High wind zone

Design Considerations

- Awning windows provide good weather cover when open; casements less so
- Care needed if projecting on to walkways and decks. Restrictor stays can limit opening in such situations
- Consider a horizontal sliding window to protect walkways
- Caution is required for the use of casements which open directly into prevailing winds.