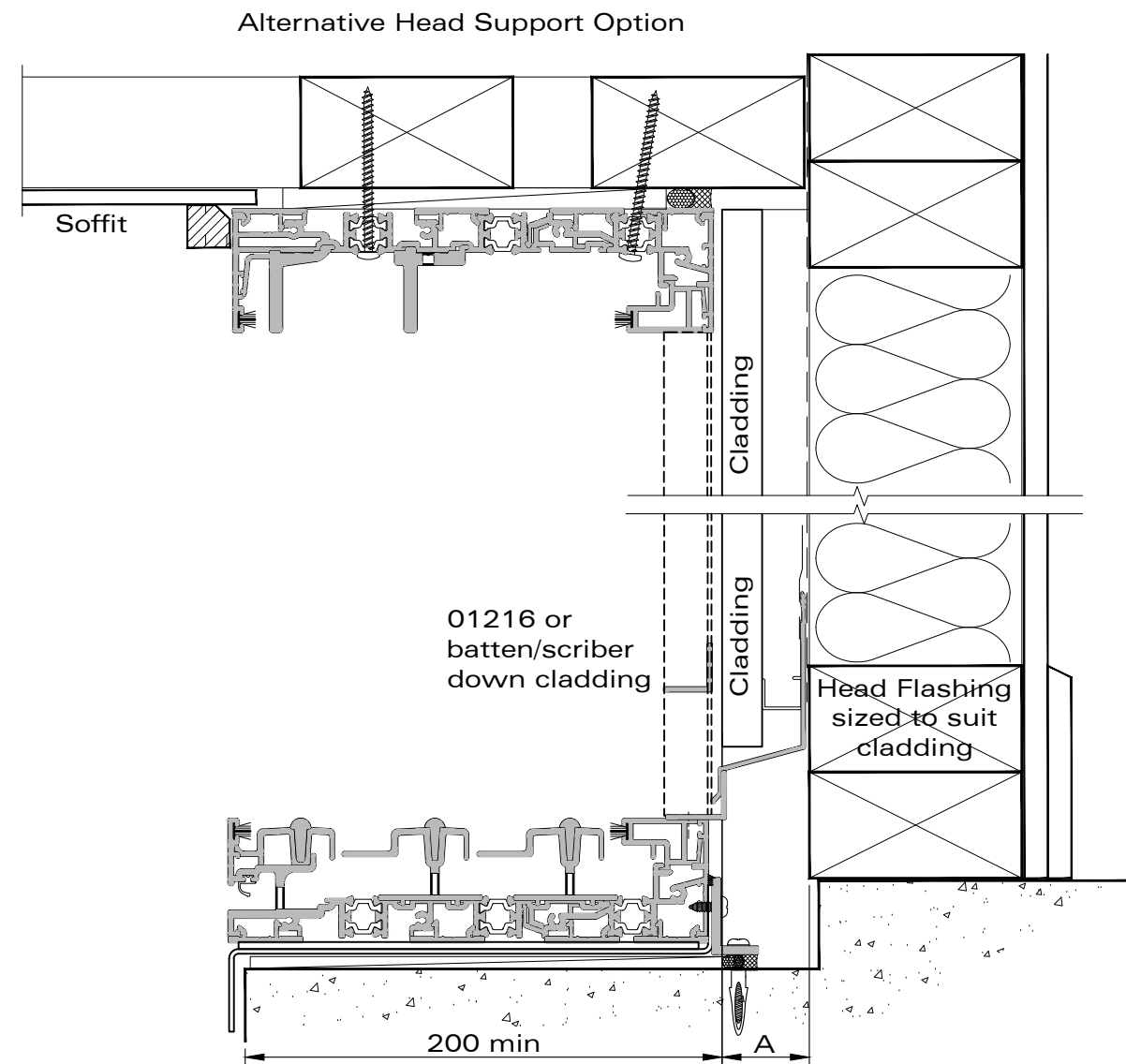
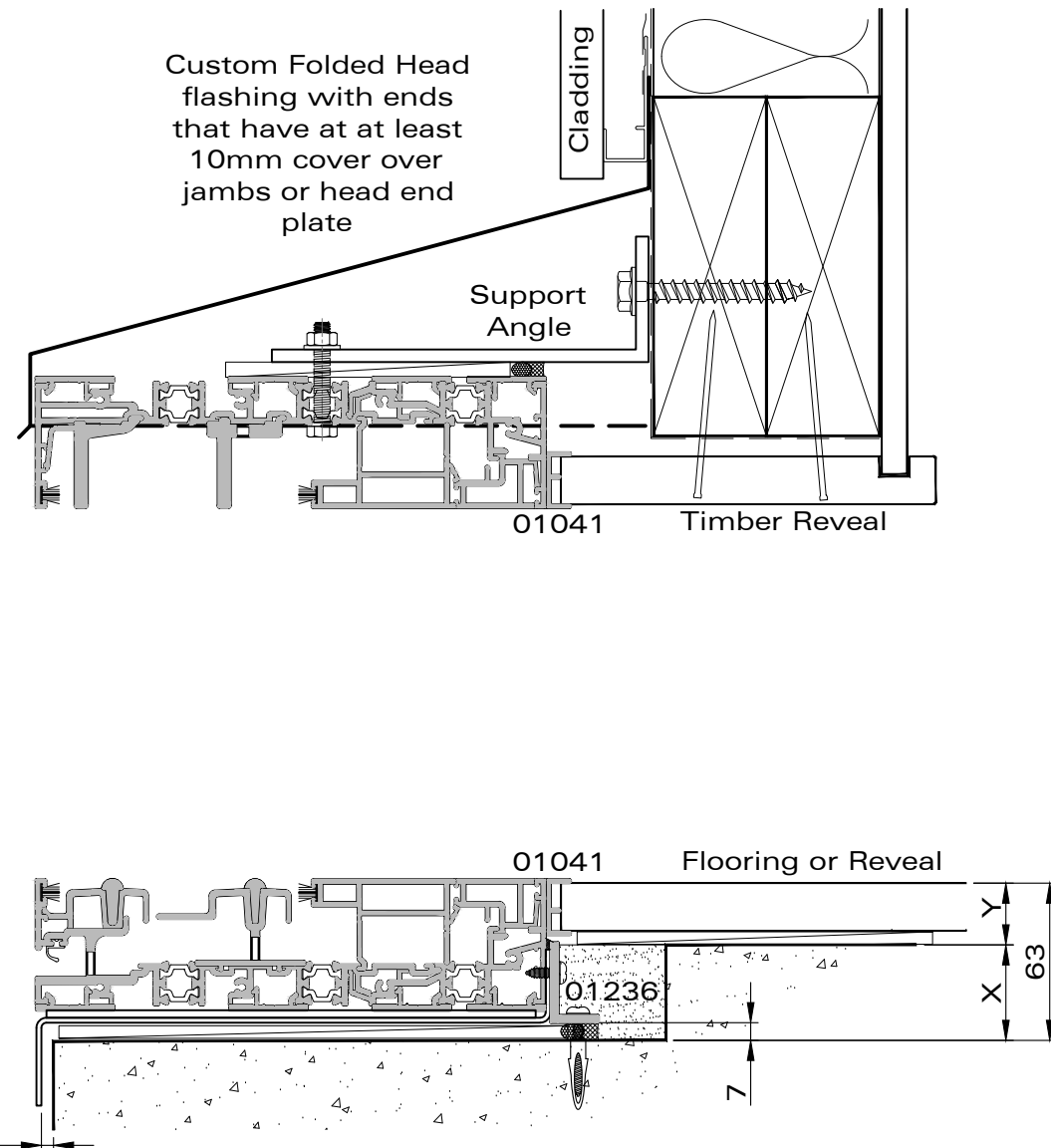
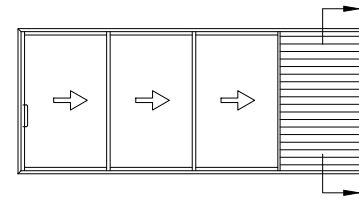
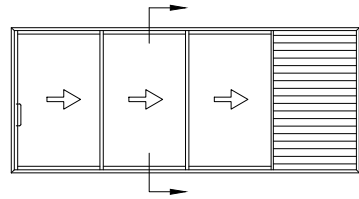
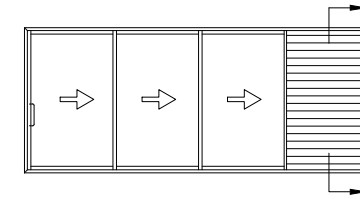


Details on this page are indicative only. Responsibility for flashing design and cladding junctions remain with the designer of the building. Support angles and built out framing will need to be engineered to suit the application.

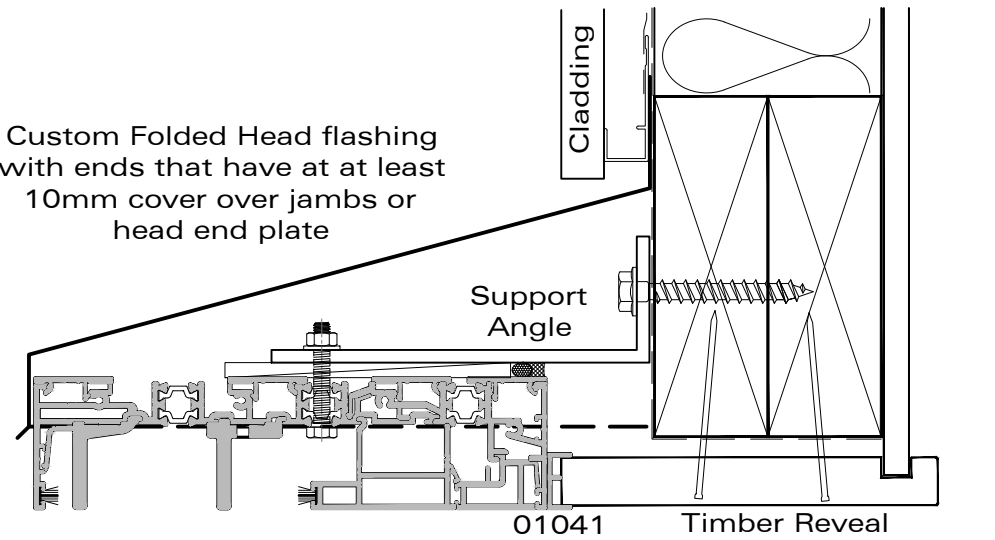




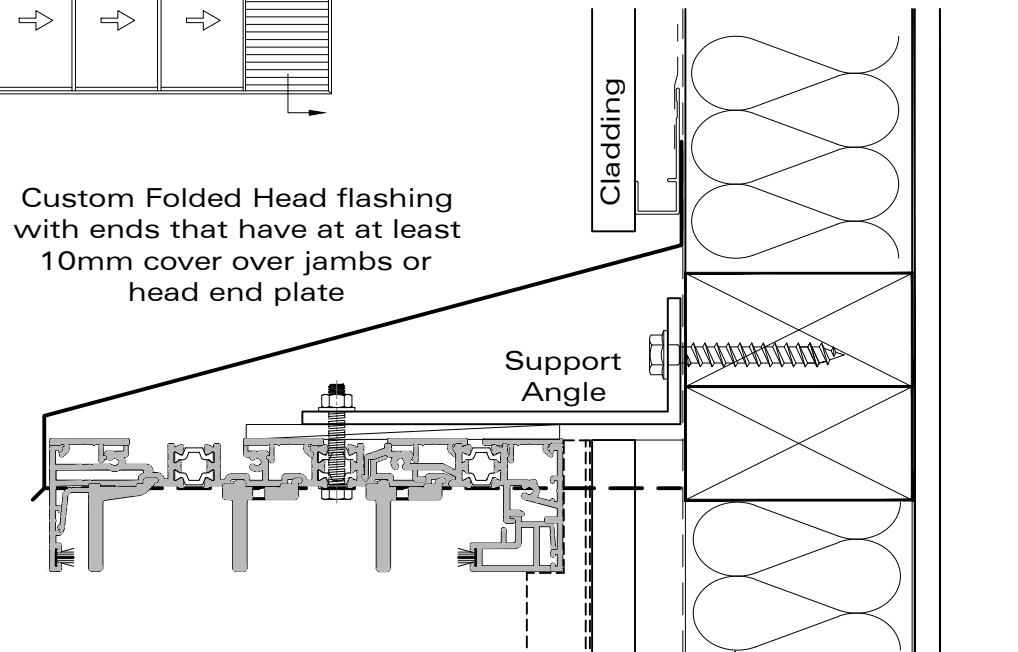
Details on this page are indicative only. Responsibility for flashing design and cladding junctions remain with the designer of the building. Support angles and built out framing will need to be engineered to suit the application.



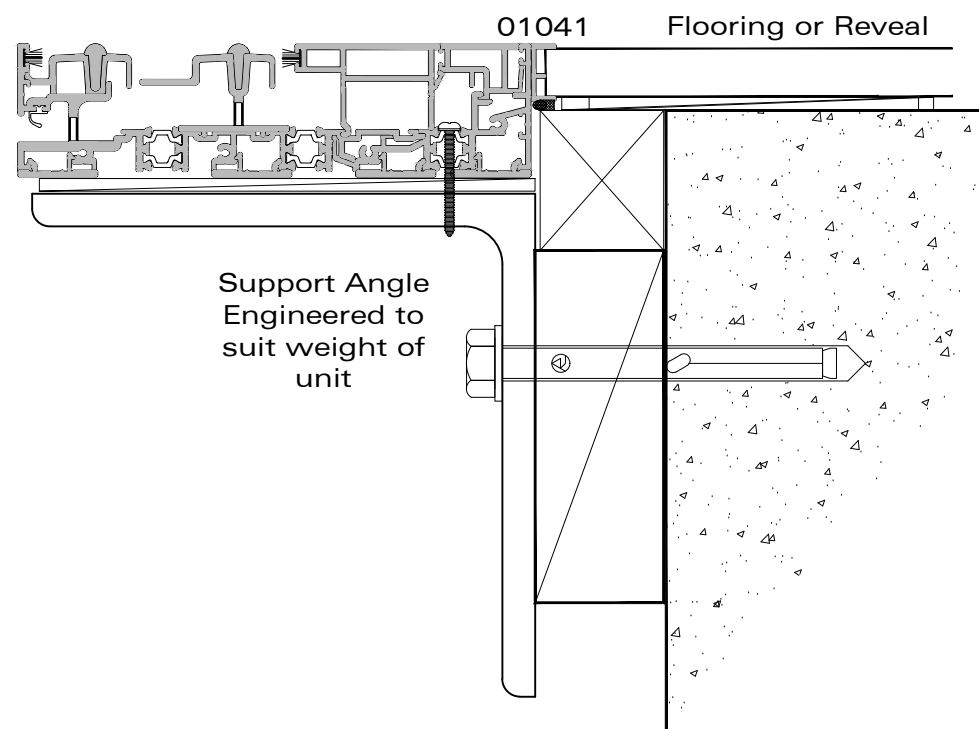
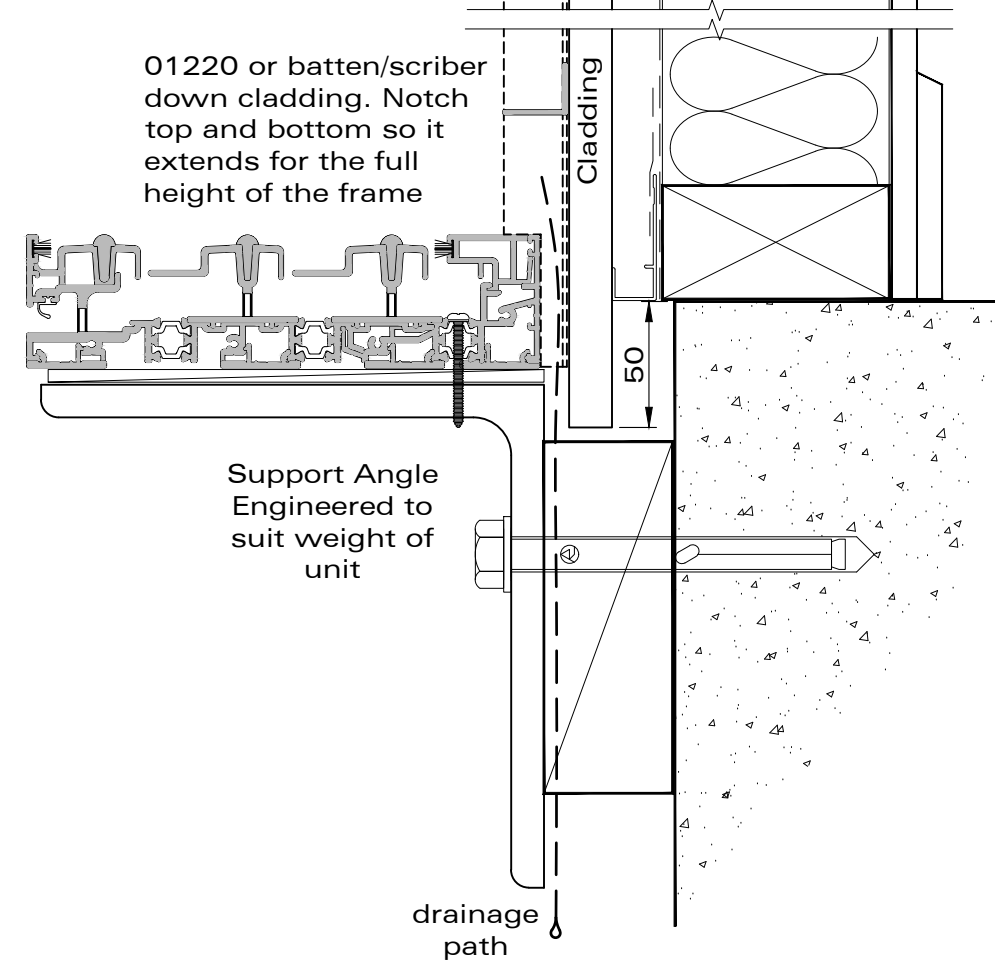
Custom Folded Head flashing with ends that have at least 10mm cover over jambs or head end plate

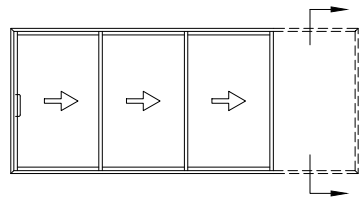


Custom Folded Head flashing with ends that have at least 10mm cover over jambs or head end plate



01220 or batten/scriber down cladding. Notch top and bottom so it extends for the full height of the frame





Details on this page are indicative only. Responsibility for flashing design and cladding junctions remain with the designer of the building.

it is optional whether a jamb frame is used inside the cavity. Refer to over wall Sectionals for ideas on detailing the frame outside of the cavity.

