

EJRE1TL60

EPB & James Hardie EasyLap™ Panel & RAB™ Board with CLD™ Battens

Two Way FRR

External Wall - Timber Frame

Load Bearing

System Number	Lining Suffix	Fire Rating	Insulation	Noise Control STC	Lining Requirement
EJRE1TL60	-M13	60/60/60	JH Mineral	47	1 x 13mm Elephant MultiSmart on One side James Hardie EasyLap™ Panel and RAB™ Board with CLD™ Structural Cavity Batten to Other side

Framing, Wall Height, Load and Framing Dimension

Timber framing to comply with relevant sections and clauses of NZBC B1: Structure and NZBC B2: Durability. Timber framing must be in accordance with NZS3604 stud tables for load bearing or non-load bearing partitions. Furthermore;

- Minimum framing dimension is 90 x 45mm.
 - Nogs must be in place at a maximum of 800mm centres.
 - Maximum stud spacing's are 600mm centres.
 - The fire rated walls built close to boundary are also required to achieve post fire stability in either direction in accordance with the NZBC verification method B1/VM1, paragraph 2.2.4
- Refer to latest James Hardie Fire & Acoustic Design Manual figures and tables for further detail.

Underlay**RAB™ Board**

One layer of James Hardie RAB™ Board fixed to entire framing.

6mm RAB™ Board : Use 40 x 2.8mm fibre cement nail at 150mm centres

9mm RAB™ Board : Use 50 x 2.8mm fibre cement nail at 150mm centres

Fixing to be 12mm from sheet edges

Reference to be made to the James Hardie Rigid Air Barrier Installation Manual.

Cavity Batten

Use 70 x 19mm CLD™ Structural Cavity Batten. Refer to EasyLap™ Panel Technical Specification

James Hardie EasyLap™ Panel Cladding

James Hardie EasyLap™ Panel cladding to external side of the timber framing. Refer to both EasyLap™ Panel Technical Specification AND the James Hardie Fire & Acoustic Design Manual for information regarding fixing and finishing.

Cavity Insulation

Wall cavity must be filled between studs and nogs with 90mm thick James Hardie Mineral Insulation.

Elephant Plasterboard Lining

One layer of 13mm Elephant MultiSmart lining to internal side of framing. Vertical fixing only permitted. Use full height sheets where possible when fixing vertical. All sheet joints must be fixed over solid timber framing. Sheets shall be touch fitted.

Fixing of Elephant Plasterboard Internal Linings**Fasteners**

41mm x 6g High Thread Drywall Screws

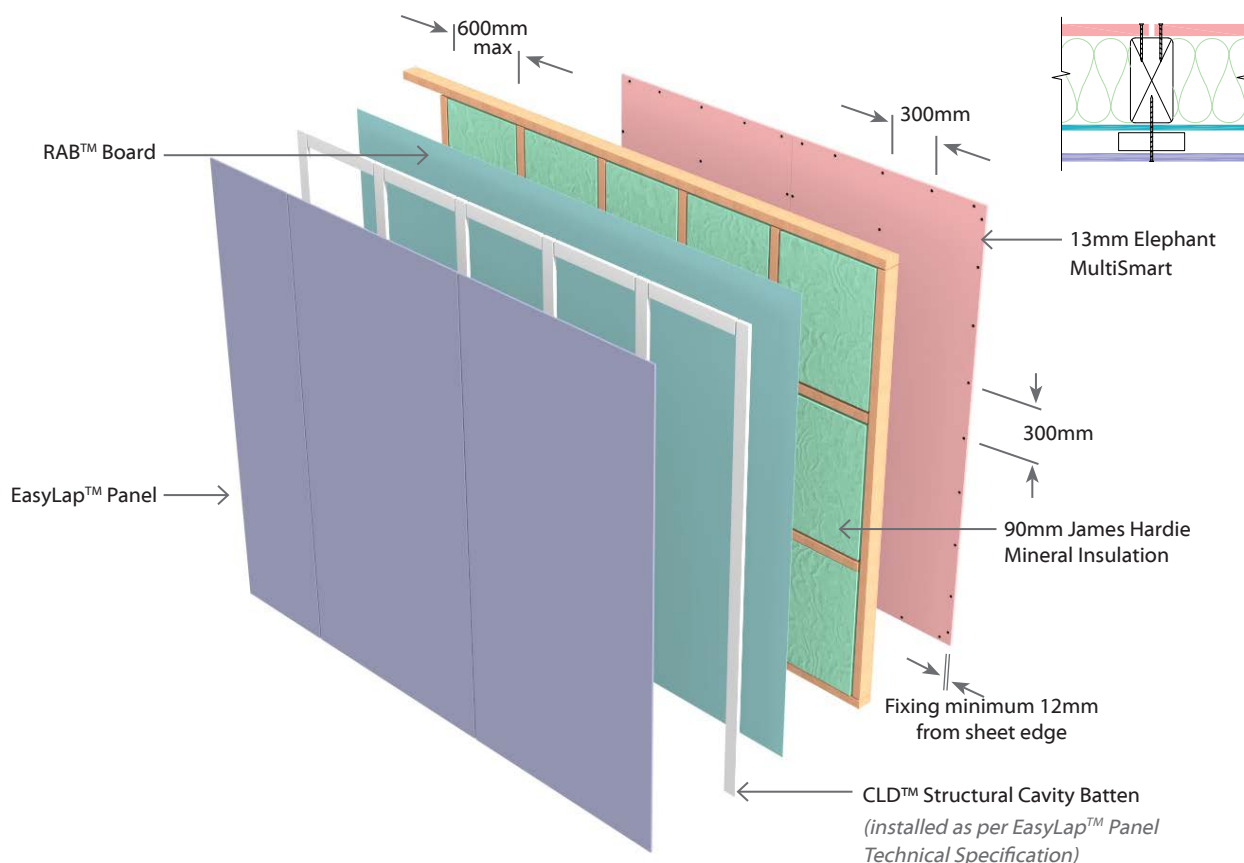
Fastener Centres

Fix at 300mm centres around sheet perimeter and up all intermediate studs. Place fasteners 50mm from sheet corners along the top and bottom plates. On end studs place additional fasteners 50-60mm vertically and no closer than 10mm from plate to stud connections.

Place fasteners no closer than 12mm from the sheet edges and 18mm from sheet ends. Place fasteners at 200mm centres where sheet end butt joints occur.

Jointing and Finishing of Elephant Plasterboard

All fastener heads stopped and all sheet joints reinforced with paper jointing tape and stopped. All in accordance with Elephant Plasterboard Installation Guide.



N.B. The above drawings are for illustrative purposes only.

