

EJSv1TL30

EPB & James Hardie Stria™ Cladding - Vertical

Two Way FRR

External Wall - Timber Frame

Load Bearing

System Number	Lining Suffix	Fire Rating	Insulation	Noise Control STC	Lining Requirement
EJSv1TL30	-F10	30/30/30	R2.2 glass wool	46	1 x 10mm Elephant FireSmart on Internal side James Hardie Stria™ Cladding vertical to External side

Framing, Wall Height, Load and Framing Dimension

Timber framing to comply with relevant sections and clauses of NZBC B1: Structure and NZBC B2: Durability. Timber framing must be in accordance with NZS3604 stud tables for load bearing or non-load bearing partitions. Furthermore;

- Minimum framing dimension is 90 x 45mm.
 - Nogs must be in place at a maximum of 800mm centres.
 - Maximum stud spacing's are 600mm centres.
 - The fire rated walls built close to boundary are also required to achieve post fire stability in either direction in accordance with the NZBC verification method B1/VM1, paragraph 2.2.4
- Refer to latest James Hardie Fire & Acoustic Design Manual figures and tables for further detail.

Underlay

For the type of allowable underlay refer to table below.

	EH Wind Zone	Other Wind Zone
Buildings <10m	RAB	Flexible Underlay
Buildings >10m	RAB	RAB

Fire Retardant Flexible Underlay

Install any Fire Retardant Flexible Underlay beneath the claddings, that complies with Table 23 of E2/AS1 and has a flammability index not exceeding 5.

RAB™ Board

One layer of James Hardie RAB™ Board fixed to entire framing.
6mm RAB™ Board : Use 40 x 2.8mm fibre cement nail at 200mm centres
9mm RAB™ Board : Use 50 x 2.8mm fibre cement nail at 200mm centres
Fixing to be 12mm from sheet edges

Reference to be made to the James Hardie Home RAB™ Pre-Cladding & RAB™ Board Installation Manual.

Cavity Batten

Use a 20mm James Hardie Horizontal Timber Cavity Batten. Refer to Stria™ Cladding Vertical Technical Specification for installation instructions.

James Hardie Stria™ Cladding - Vertical

James Hardie Stria™ Cladding fixed vertically to external side of the timber framing. Refer to both Stria™ Cladding Vertical Technical Specification AND the James Hardie Fire & Acoustic Design Manual for information regarding fixing and finishing.

Wall Insulation

Insulation must be installed between studs and nogs. Use 90mm thick R2.2 glass wool insulation.

Elephant Plasterboard Lining

One layer of 10mm Elephant FireSmart lining to internal side of framing. Vertical fixing only permitted. Use full height sheets where possible when fixing vertical. All sheet joints must be fixed over solid timber framing. Sheets shall be touch fitted.

Fixing of Elephant Plasterboard Internal Linings

Fasteners

41mm x 6g High Thread Drywall Screws

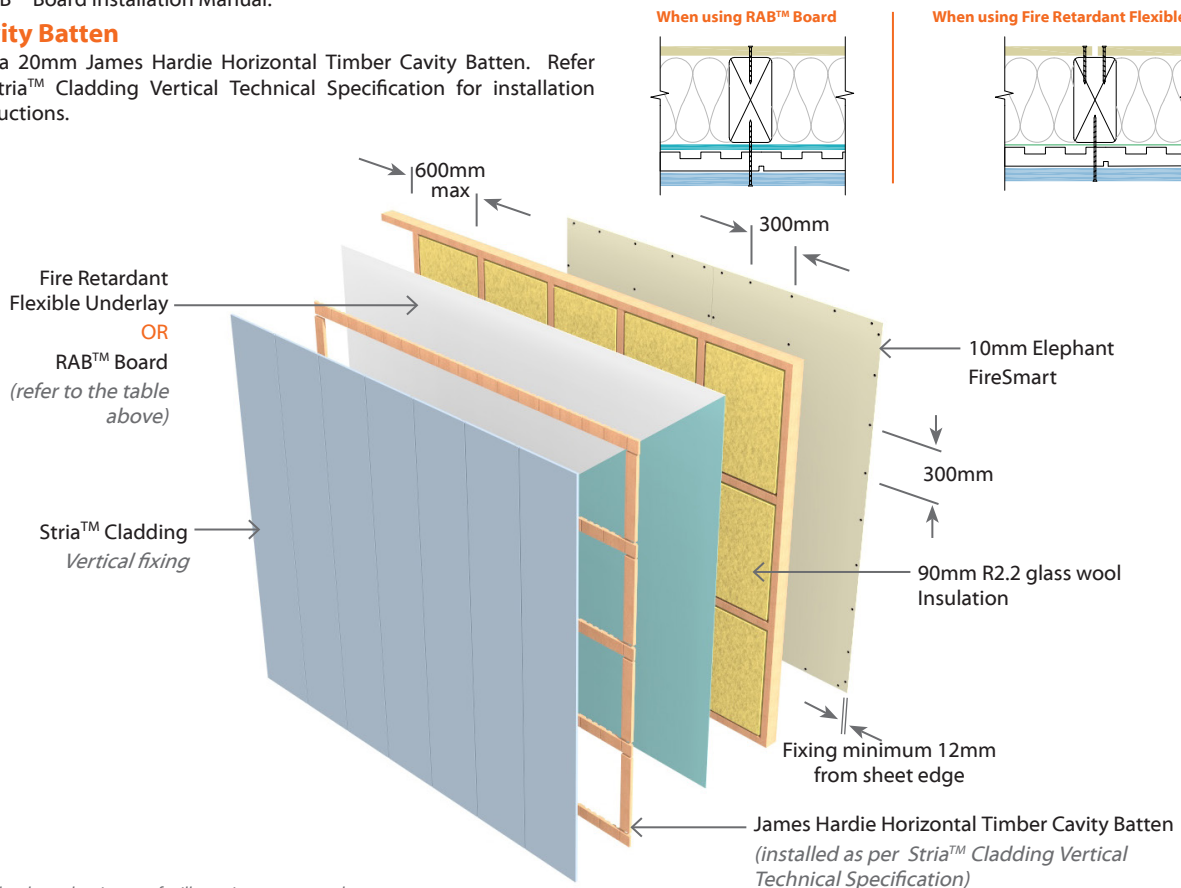
Fastener Centres

Fix at 300mm centres around sheet perimeter and up all intermediate studs. Place fasteners 50mm from sheet corners along the top and bottom plates. On end studs place additional fasteners 50-60mm vertically and no close than 10mm from plate to stud connections.

Place fasteners no closer than 12mm from the sheet edges and 18mm from sheet ends. Place fasteners at 200mm centres where sheet end butt joints occur.

Jointing and Finishing of Elephant Plasterboard

All fastener heads stopped and all sheet joints reinforced with paper jointing tape and stopped. All in accordance with Elephant Plasterboard Installation Guide.



N.B. The above drawings are for illustrative purposes only.

