

EJW1TL60 EPB & James Hardie™ Weatherboard Two Way FRR

External Wall - Timber Frame Load Bearing

System Number	Lining Suffix	Fire Rating	Insulation	Noise Control STC	Lining Requirement
EJW1TL60	-M13	60/60/60	Hardie™ Mineral	46	1 x 13mm Elephant MultiSmart on Internal side Hardie™ Plank Weatherboard to External side

Framing, Wall Height, Load and Framing Dimension

Timber framing to comply with relevant sections and clauses of NZBC B1: Structure and NZBC B2: Durability. Timber framing must be in accordance with NZS3604 stud tables for load bearing or non-load bearing partitions. Furthermore;

- Minimum framing dimension is 90 x 45mm.
 - Nogs must be in place at a maximum of 800mm centres.
 - Maximum stud spacing's are 600mm centres.
 - The fire rated walls built close to boundary are also required to achieve post fire stability in either direction in accordance with the NZBC verification method B1/VM1, paragraph 2.2.4
- Refer to latest James Hardie Fire & Acoustic Design Manual figures and tables for further detail.

Underlay

Fire Retardant Flexible Underlay

Install any Fire Retardant Flexible Underlay beneath the claddings, that complies with Table 23 of E2/AS1 and has a flammability index not exceeding 5.

Cavity Batten

When Cavity Batten is required, use a nominal 20mm Timber Cavity Batten. Refer to Hardie™ Plank Weatherboards Technical Specification for installation instructions.

When Cladding can be directly fixed without a cavity batten then a fire retardant flexible underlay must be used.

Hardie™ Plank Weatherboard Cladding

Hardie™ Plank Weatherboard cladding to external side of the timber framing. Consider the nail length required depending on the type of fixing i.e. Cavity fixing or Direct fixing. Refer to both Hardie™ Plank Weatherboards Technical Specification AND the James Hardie Fire & Acoustic Design Manual for information regarding fixing and finishing.

Wall Insulation

Insulation must be installed between studs and nogs. Use Hardie™ Mineral insulation.

Elephant Plasterboard Lining

One layer of 13mm Elephant MultiSmart lining to internal side of framing. Vertical fixing only permitted. Use full height sheets where possible when fixing vertical. All sheet joints must be fixed over solid timber framing. Sheets shall be touch fitted.

Fixing of Elephant Plasterboard Internal Linings

Fasteners

41mm x 6g High Thread Drywall Screws

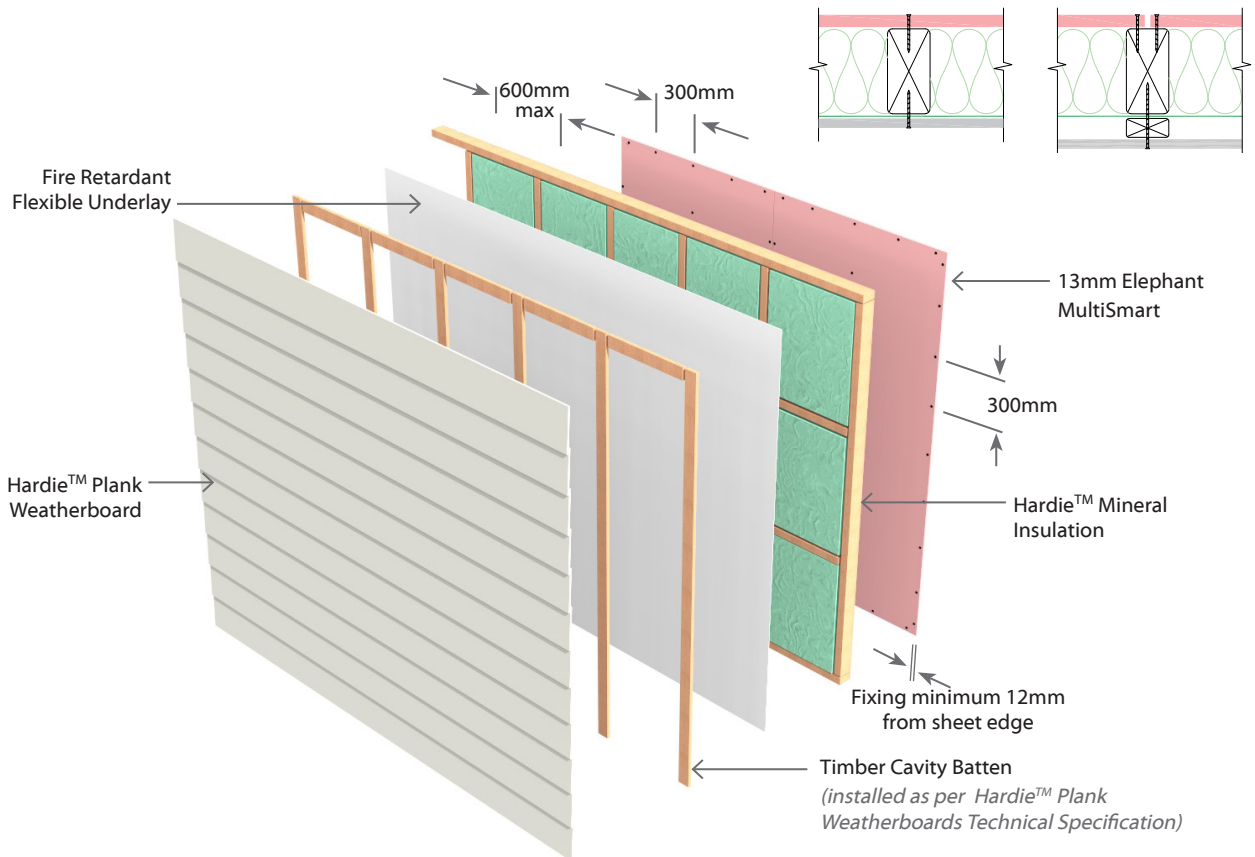
Fastener Centres

Fix at 300mm centres around sheet perimeter and up all intermediate studs. Place fasteners 50mm from sheet corners along the top and bottom plates. On end studs place additional fasteners 50-60mm vertically and no close than 10mm from plate to stud connections.

Place fasteners no closer than 12mm from the sheet edges and 18mm from sheet ends. Place fasteners at 200mm centres where sheet end butt joints occur.

Jointing and Finishing of Elephant Plasterboard

All fastener heads stopped and all sheet joints reinforced with paper jointing tape and stopped. All in accordance with Elephant Plasterboard Installation Guide.



N.B. The above drawings are for illustrative purposes only.

