

## Fire Rated Systems

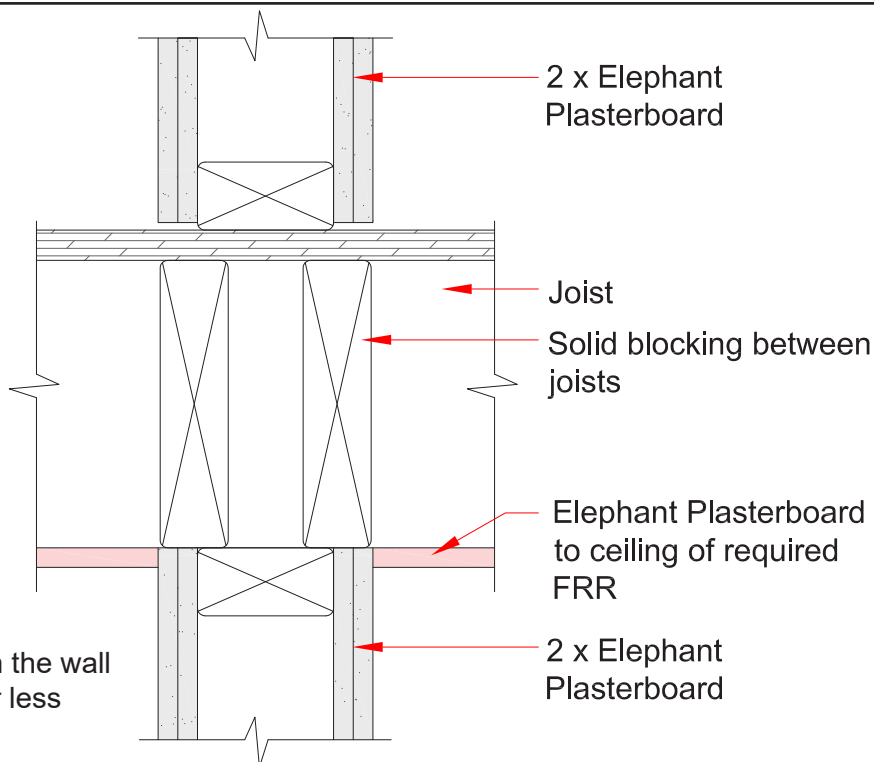
### Timber Frame Wall Floor/Ceiling Junction

Date: April 2021

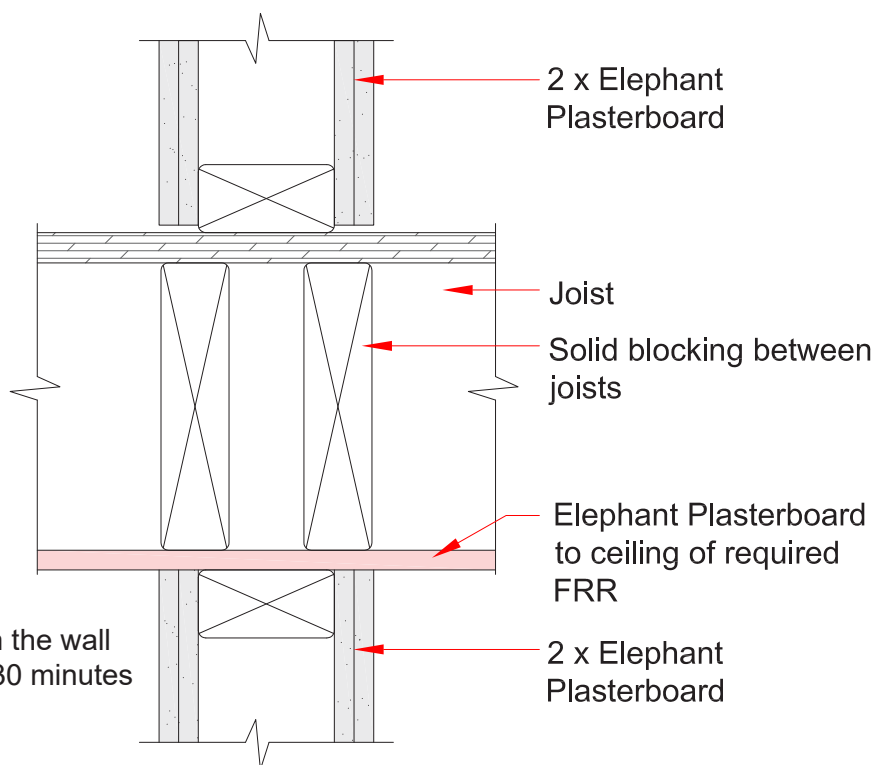
Scale: 1:5

System: E4TL

Reference: **210**



- FRR of Floor/Ceiling is higher than the wall
- Difference in FRR is 30 minutes or less
- Non-Load bearing wall



- FRR of Floor/Ceiling is higher than the wall
- Difference in FRR is greater than 30 minutes
- Non-Load bearing wall