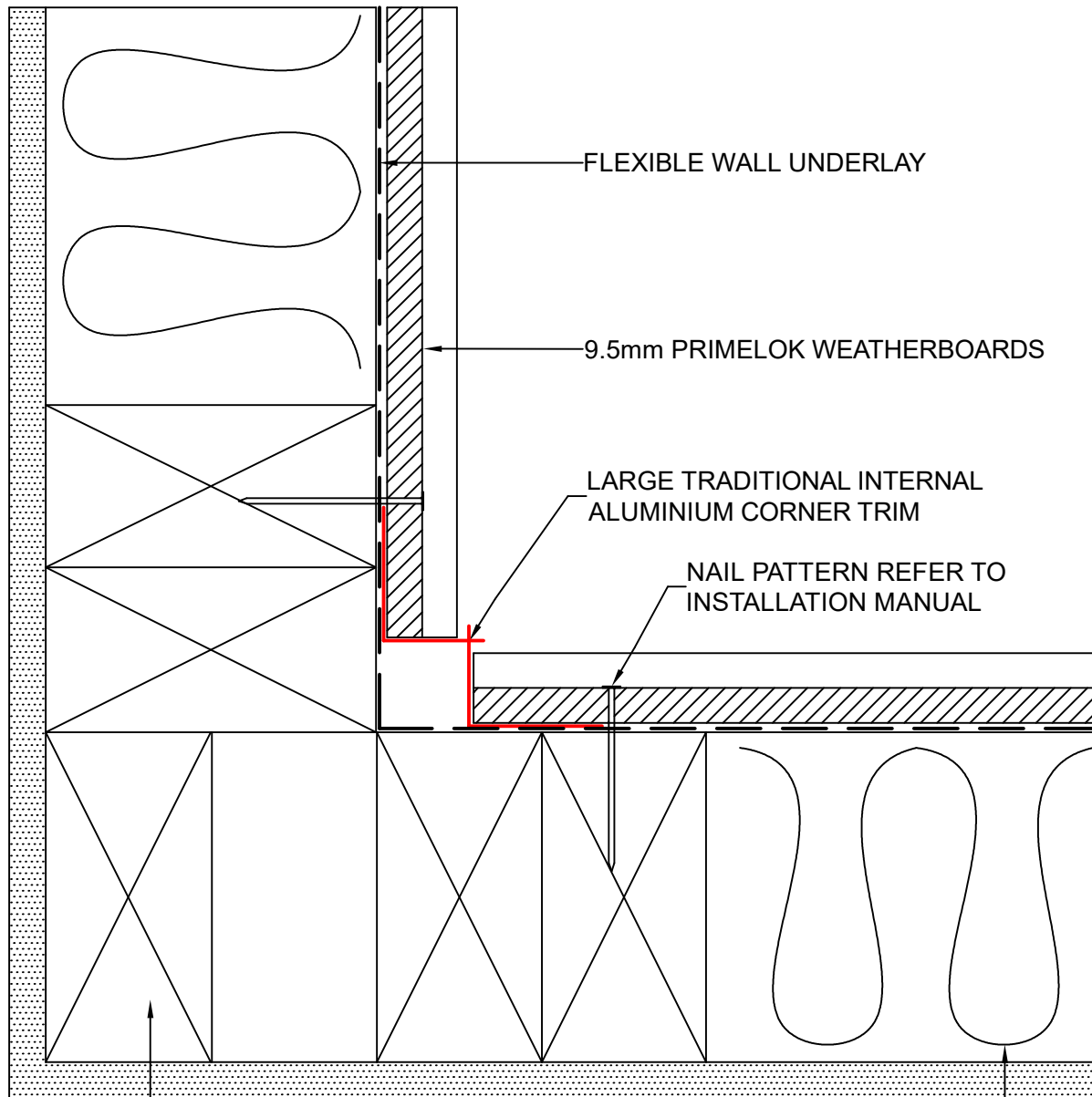


# WEATHERTEX CONSTRUCTION DETAILS

## PRIMELOK WEATHERBOARDS

DIRECT FIX  
CONSTRUCTION



These drawings are for information only. They do not contain full details required for construction and must be used in conjunction with the current issue Weathertex Installation Manual, New Zealand Building Code and Local Regulations. Weathertex recommends gaining professional advice to ensure the drawings are suitable for your project. Weathertex accepts no liability in respect to the use of these drawings.

TIMBER STUD FRAME

INTERNAL LINING

INSULATION



DRAWING NAME:  
DIRECT FIX INSTALLATION - LARGE INTERNAL CORNER  
(PRIMELOK RANGE)

SCALE:  
NTS

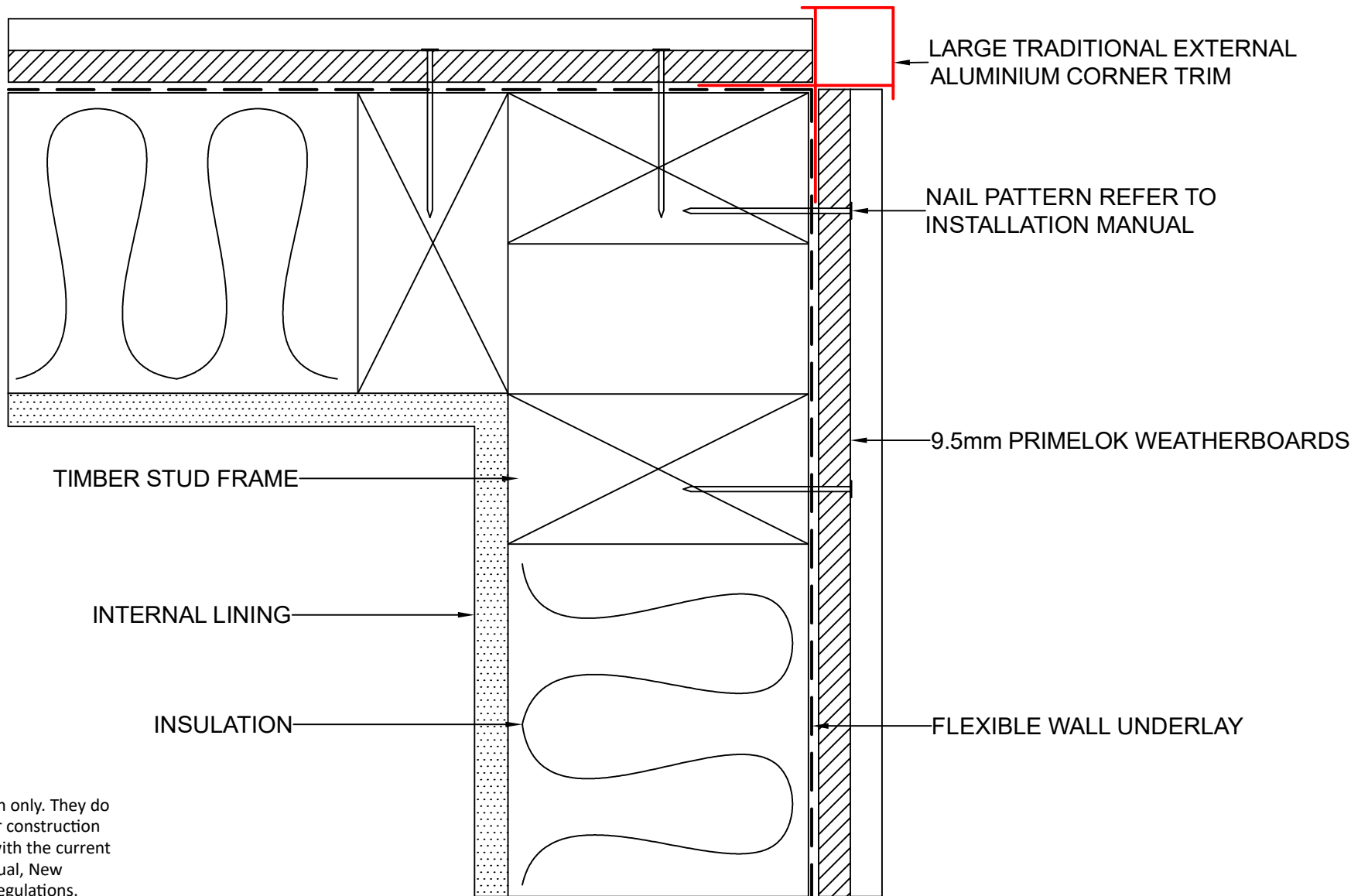
DRAWN BY:  
A.MOATE

CHECKED BY:  
R.STUART

DATE:  
06.09.22

DRAWING No.:  
NZ-PL-DF-1

SHT SIZE  
A4



These drawings are for information only. They do not contain full details required for construction and must be used in conjunction with the current issue Weathertex Installation Manual, New Zealand Building Code and Local Regulations. Weathertex recommends gaining professional advice to ensure the drawings are suitable for your project. Weathertex accepts no liability in respect to the use of these drawings.



DRAWING NAME:  
 DIERECT FIX INSTALLATION - LARGE EXTERNAL CORNER  
 (PRIMELOK RANGE)

SCALE:  
 NTS

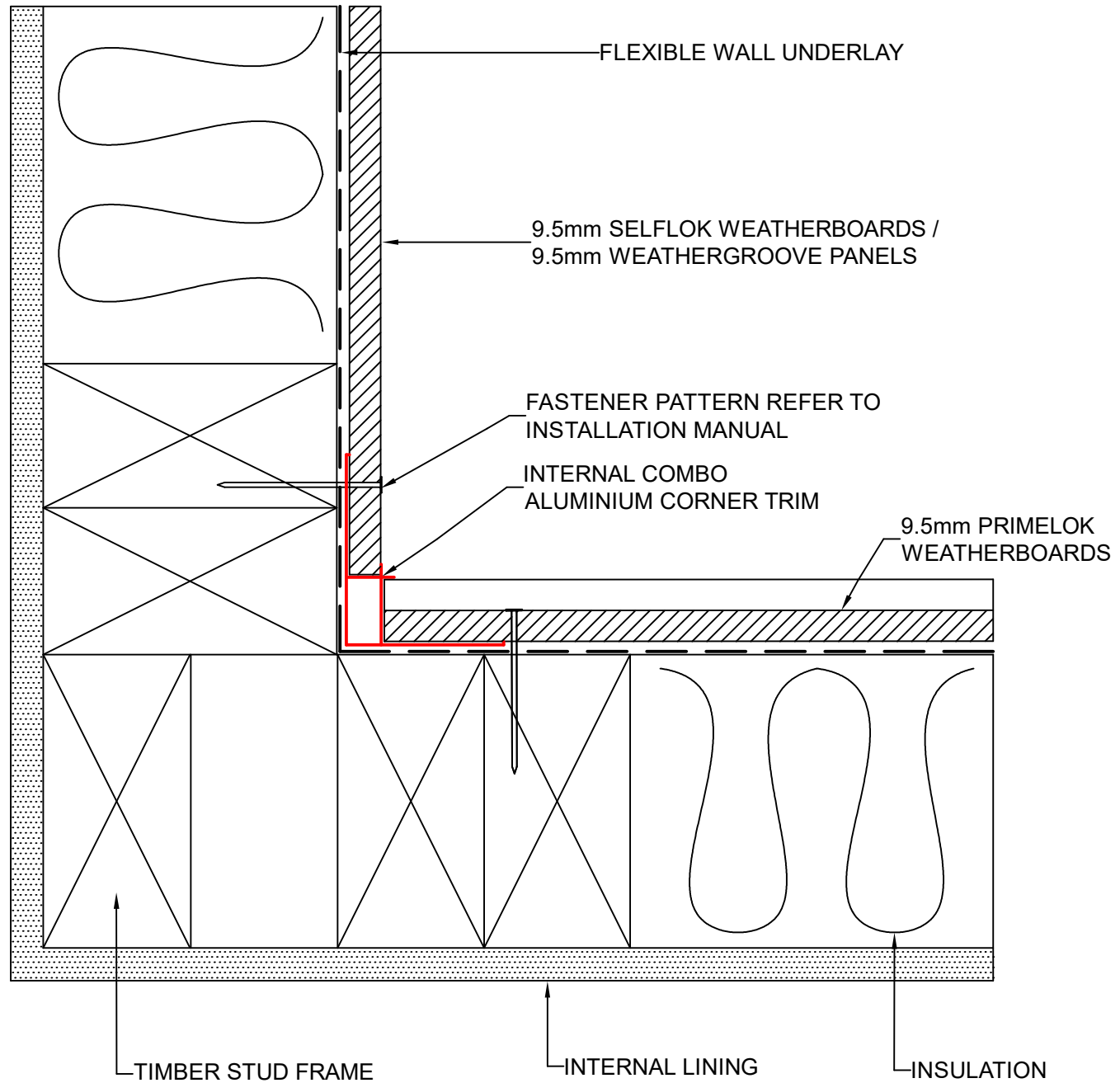
DRAWN BY:  
 A.MOATE

CHECKED BY:  
 R.STUART

DATE:  
 06.09.22

DRAWING No.:  
 NZ-PL-DF-2

SHT SIZE  
 A4



These drawings are for information only. They do not contain full details required for construction and must be used in conjunction with the current issue Weathertex Installation Manual, New Zealand Building Code and Local Regulations. Weathertex recommends gaining professional advice to ensure the drawings are suitable for your project. Weathertex accepts no liability in respect to the use of these drawings.



DRAWING NAME:  
DIERECT FIX INSTALLATION - INTERNAL COMBO CORNER  
(PRIMELOK RANGE)

SCALE:  
NTS

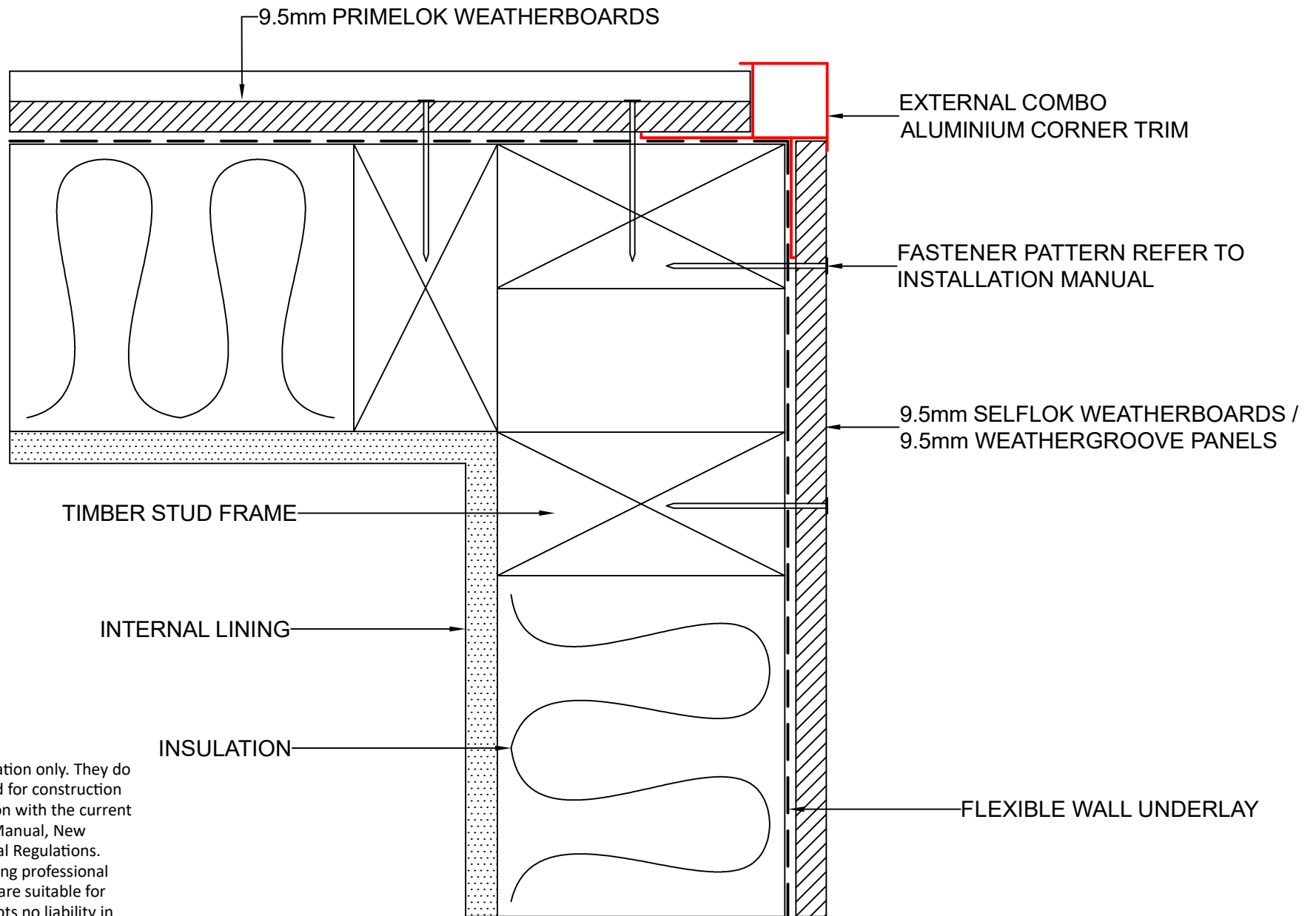
DRAWN BY:  
A.MOATE

CHECKED BY:  
R.STUART

DATE:  
06.09.22

DRAWING No.:  
NZ-PL-DF-3

SHT SIZE  
A4



These drawings are for information only. They do not contain full details required for construction and must be used in conjunction with the current issue Weathertex Installation Manual, New Zealand Building Code and Local Regulations. Weathertex recommends gaining professional advice to ensure the drawings are suitable for your project. Weathertex accepts no liability in respect to the use of these drawings.



DRAWING NAME:  
 DIRECT FIX INSTALLATION - EXTERNAL COMBO CORNER  
 (PRIMELOK RANGE)

SCALE:  
 NTS

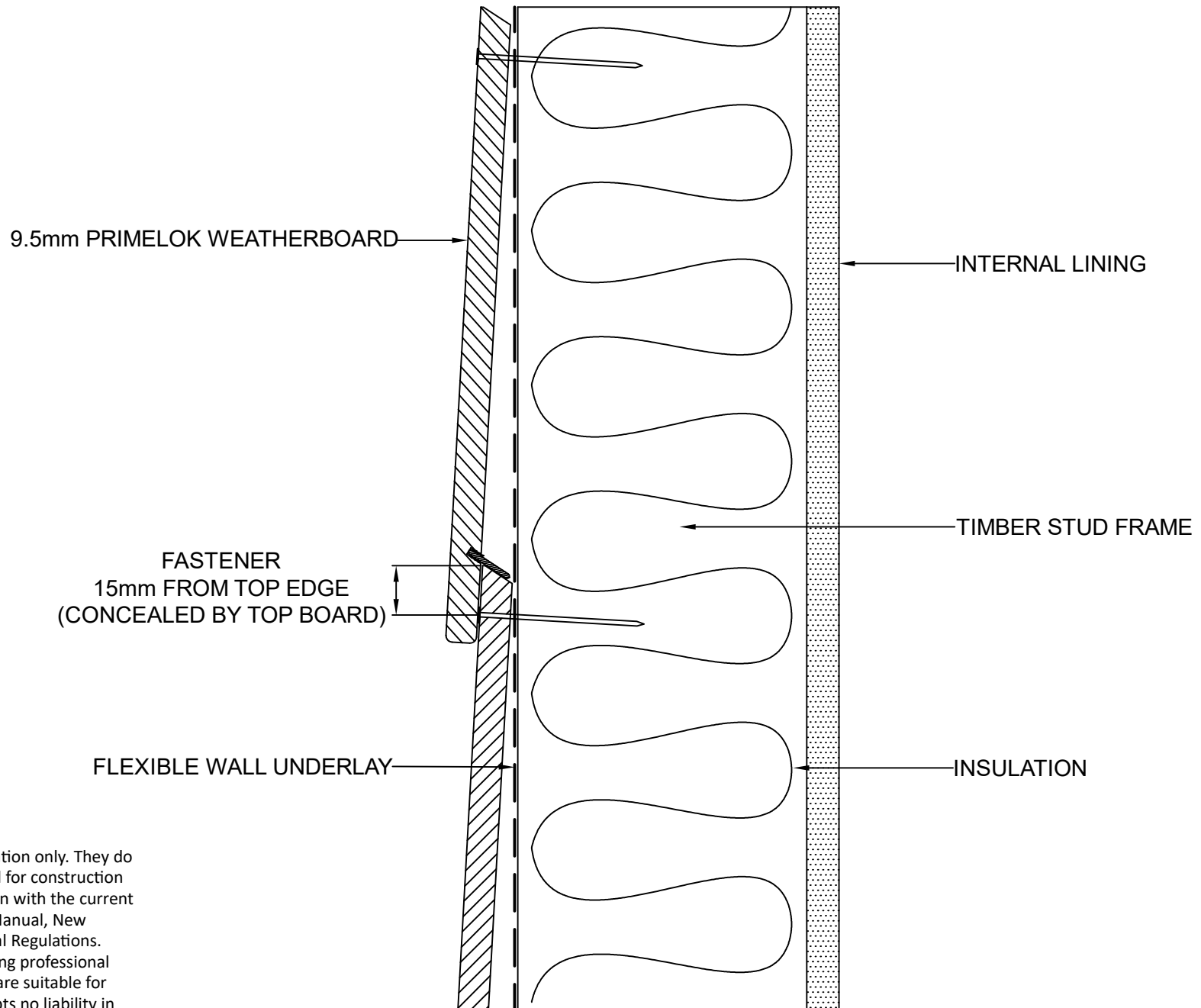
DRAWN BY:  
 A.MOATE

CHECKED BY:  
 R.STUART

DATE:  
 06.09.22

DRAWING No.:  
 NZ-PL-DF-4

SHT SIZE  
 A4



These drawings are for information only. They do not contain full details required for construction and must be used in conjunction with the current issue Weathertex Installation Manual, New Zealand Building Code and Local Regulations. Weathertex recommends gaining professional advice to ensure the drawings are suitable for your project. Weathertex accepts no liability in respect to the use of these drawings.



DRAWING NAME:  
DIRECT FIX INSTALLATION - FASTENING PATTERN  
(PRIMELOK RANGE)

SCALE:  
NTS

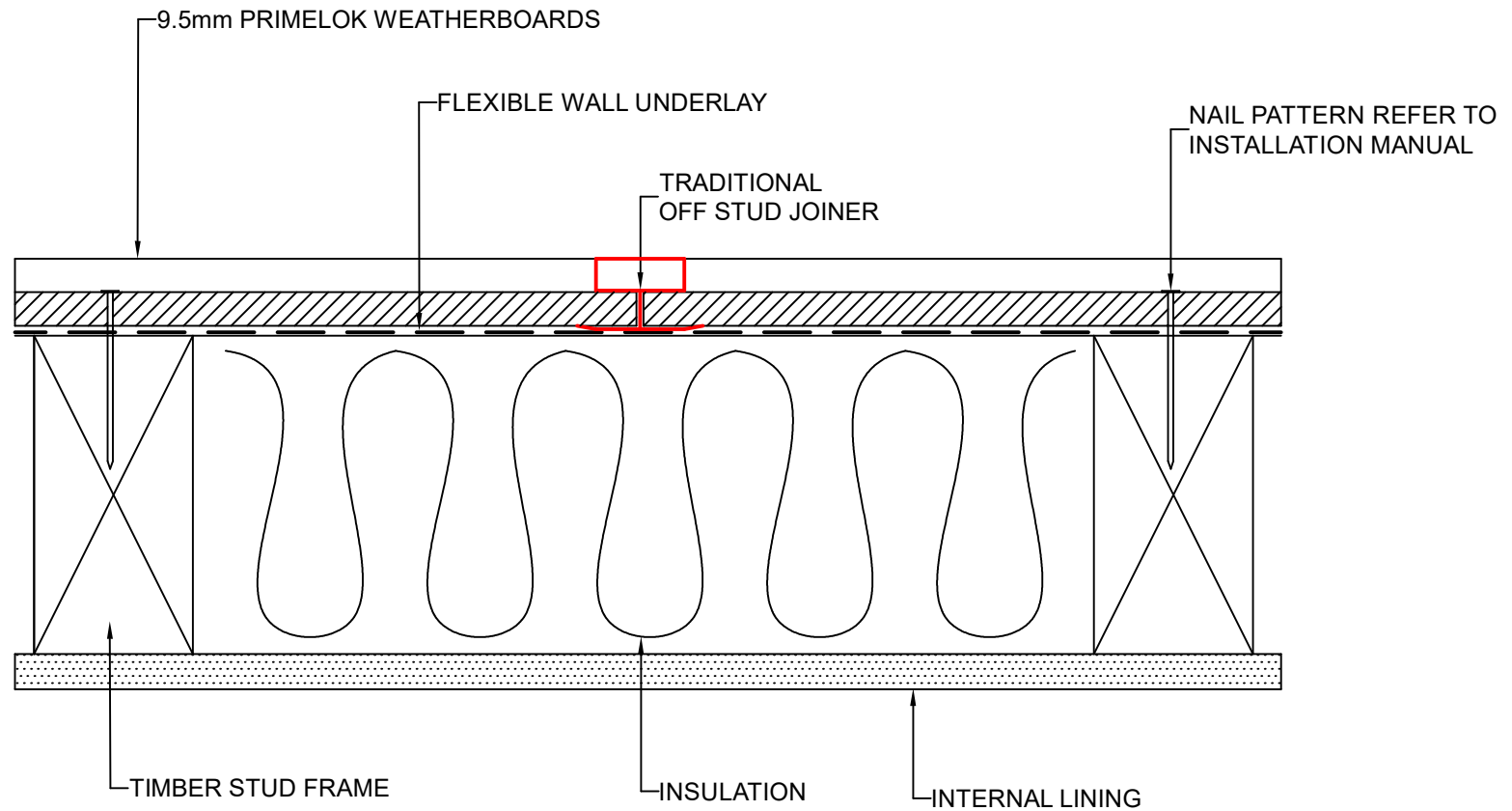
DRAWN BY:  
A.MOATE

CHECKED BY:  
R.STUART

DATE:  
06.09.22

DRAWING No.:  
NZ-PL-DF-5

SHT SIZE  
A4



These drawings are for information only. They do not contain full details required for construction and must be used in conjunction with the current issue Weathertex Installation Manual, New Zealand Building Code and Local Regulations. Weathertex recommends gaining professional advice to ensure the drawings are suitable for your project. Weathertex accepts no liability in respect to the use of these drawings.



DRAWING NAME:  
DIRECT FIX INSTALLATION - JOINING  
(PRIMELOK RANGE)

SCALE:  
NTS

DRAWN BY:  
A.MOATE

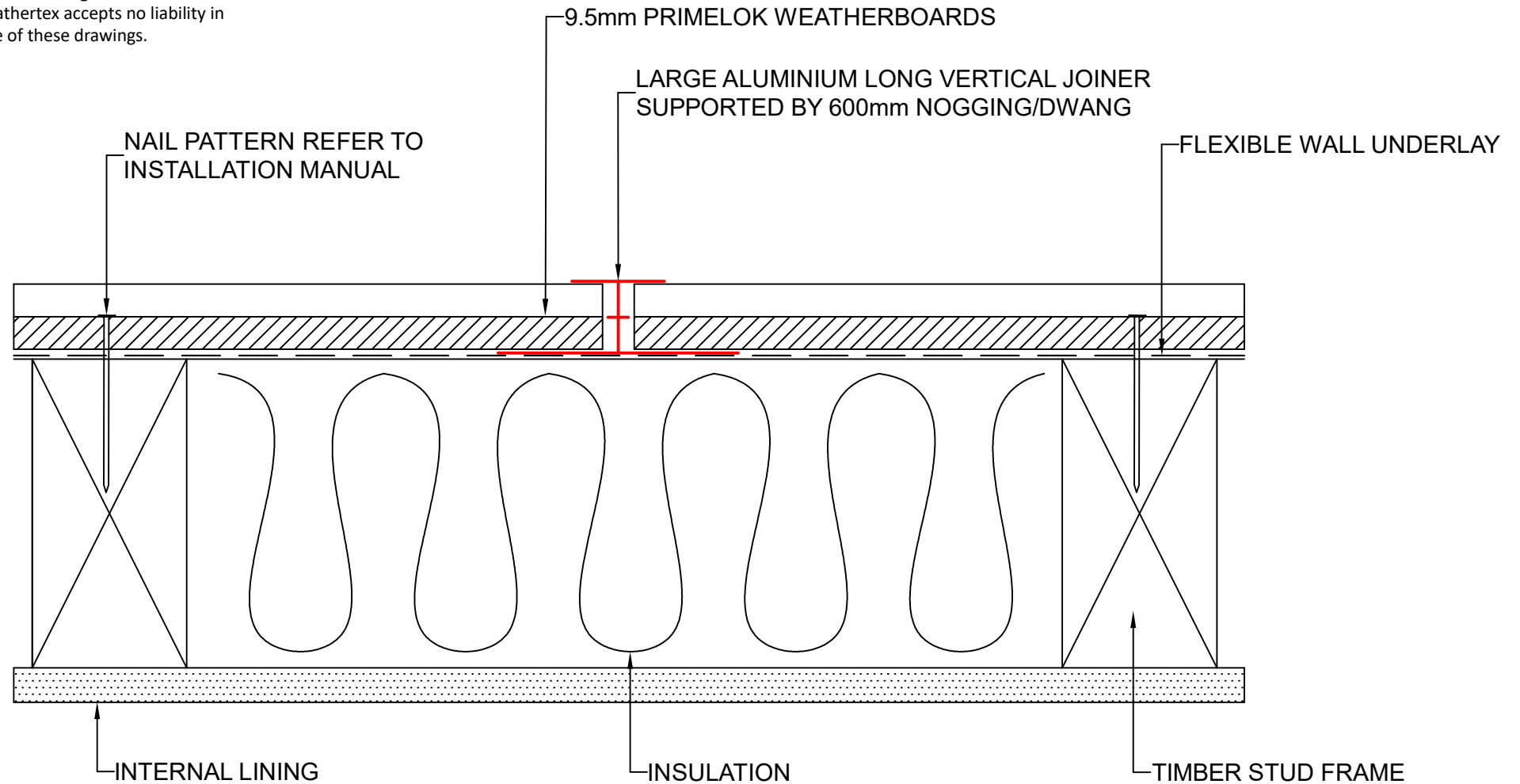
CHECKED BY:  
R.STUART

DATE:  
06.09.22

DRAWING No.:  
NZ-PL-DF-6

SHT SIZE  
A4

These drawings are for information only. They do not contain full details required for construction and must be used in conjunction with the current issue Weathertex Installation Manual, New Zealand Building Code and Local Regulations. Weathertex recommends gaining professional advice to ensure the drawings are suitable for your project. Weathertex accepts no liability in respect to the use of these drawings.



DRAWING NAME:  
DIRECT FIX INSTALLATION - LONG VERTICAL JOINER  
(PRIMELOK RANGE)

SCALE:  
NTS

DRAWN BY:  
A.MOATE

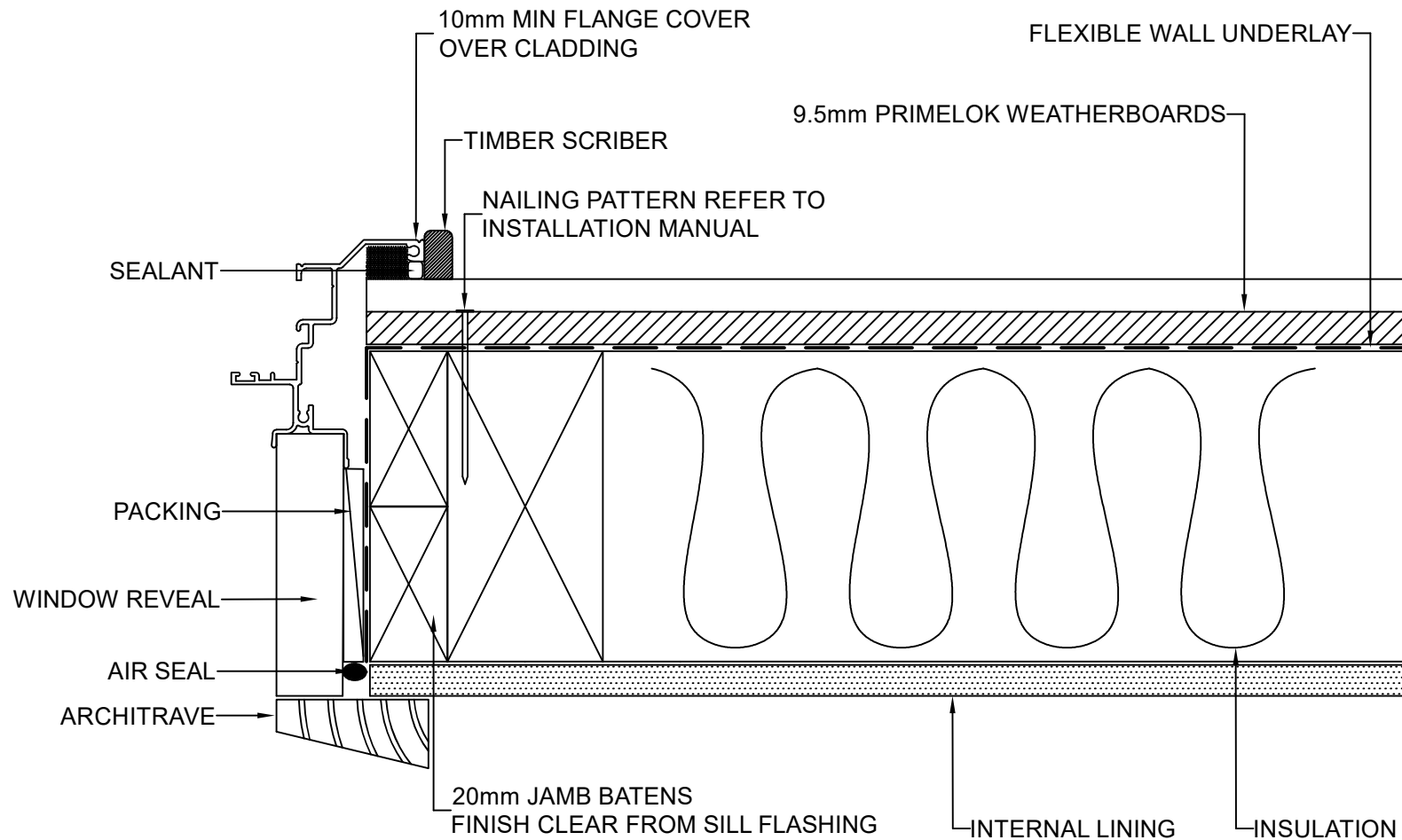
CHECKED BY:  
R.STUART

DATE:  
06.09.22

DRAWING No.:  
NZ-PL-DF-7

SHT SIZE  
A4





These drawings are for information only. They do not contain full details required for construction and must be used in conjunction with the current issue Weathertex Installation Manual, New Zealand Building Code and Local Regulations. Weathertex recommends gaining professional advice to ensure the drawings are suitable for your project. Weathertex accepts no liability in respect to the use of these drawings.



DRAWING NAME:  
DIRECT FIX INSTALLATION - WINDOW JAMB  
(PRIMELOK RANGE)

SCALE:

NTS

DRAWN BY:

A.MOATE

CHECKED BY:

R.STUART

DATE:

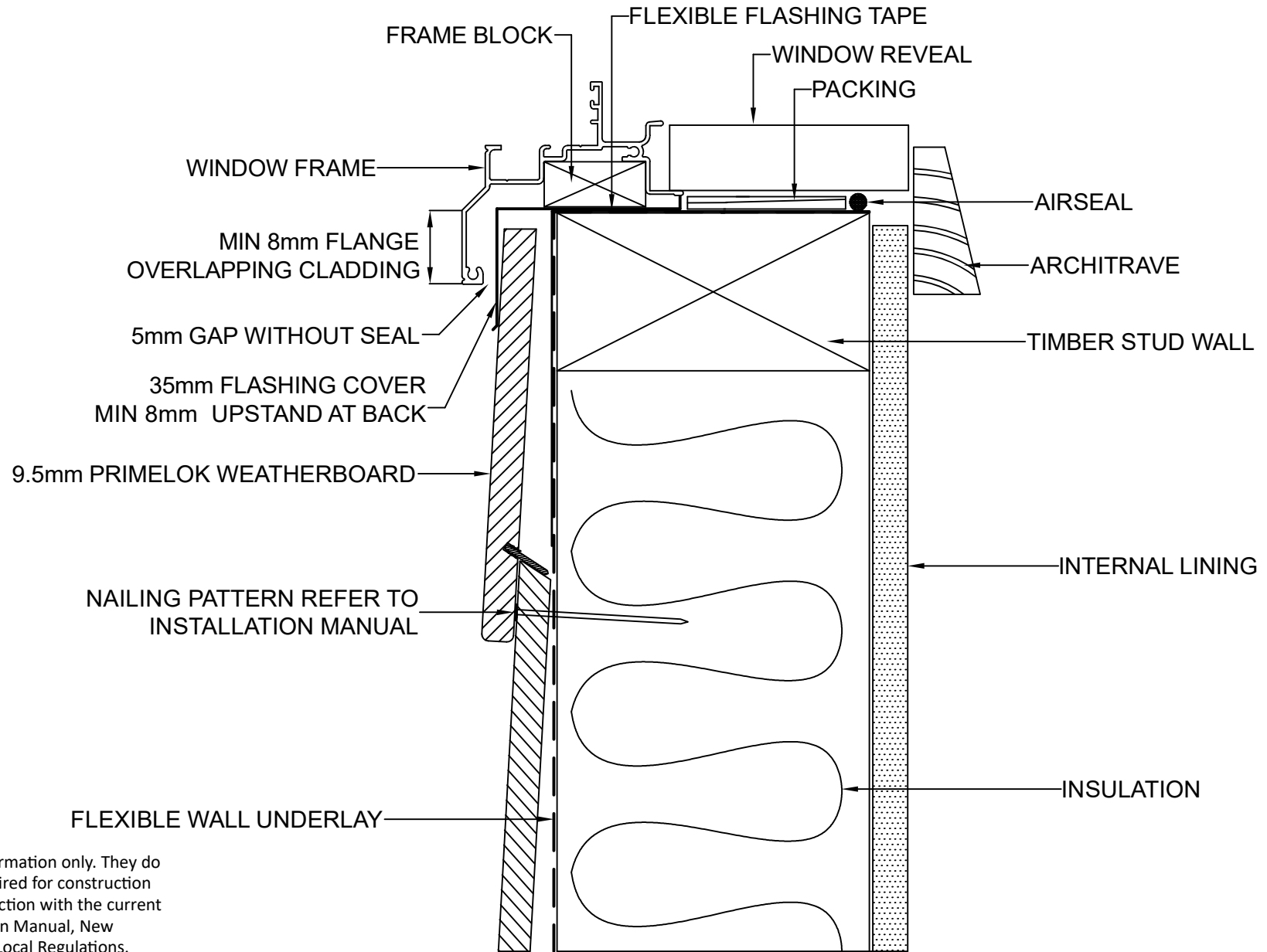
06.09.22

DRAWING No.:

NZ-PL-DF-8

SHT SIZE

A4



These drawings are for information only. They do not contain full details required for construction and must be used in conjunction with the current issue Weathertex Installation Manual, New Zealand Building Code and Local Regulations. Weathertex recommends gaining professional advice to ensure the drawings are suitable for your project. Weathertex accepts no liability in respect to the use of these drawings.



DRAWING NAME:  
DIRECT FIX INSTALLATION - WINDOW SILL  
(PRIMELOK RANGE)

SCALE:  
NTS

DRAWN BY:  
A.MOATE

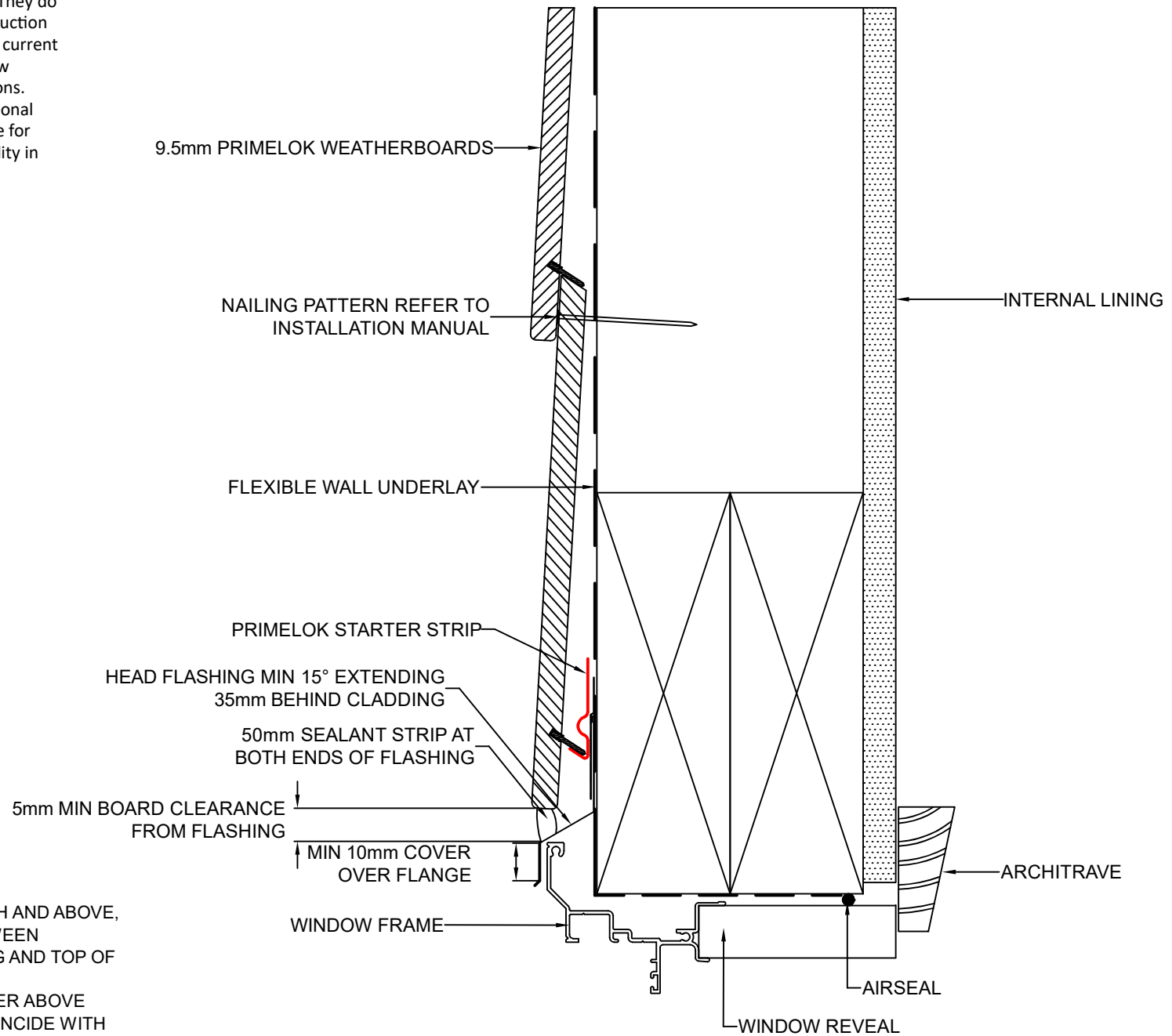
CHECKED BY:  
R.STUART

DATE:  
06.09.22

DRAWING No.:  
NZ-PL-DF-9

SHT SIZE  
A4

These drawings are for information only. They do not contain full details required for construction and must be used in conjunction with the current issue Weathertex Installation Manual, New Zealand Building Code and Local Regulations. Weathertex recommends gaining professional advice to ensure the drawings are suitable for your project. Weathertex accepts no liability in respect to the use of these drawings.



NOTE: IN WIND AREAS OF VERY HIGH AND ABOVE, SEALANT MUST BE INSTALLED BETWEEN UNDERSIDE OF THE HEAD FLASHING AND TOP OF THE WINDOW HEAD FLANGE

NOTE 2: USE A SUITABLE PACKER ABOVE WINDOW IF OPENING DOES NOT COINCIDE WITH COURSES AND FASTEN THROUGH THE FACE OF THE BOARD AT EACH STUD



DRAWING NAME:  
DIRECT FIX INSTALLATION - WINDOW LINTEL  
(PRIMELOK RANGE)

SCALE:

NTS

DRAWN BY:

A.MOATE

CHECKED BY:

R.STUART

DATE:

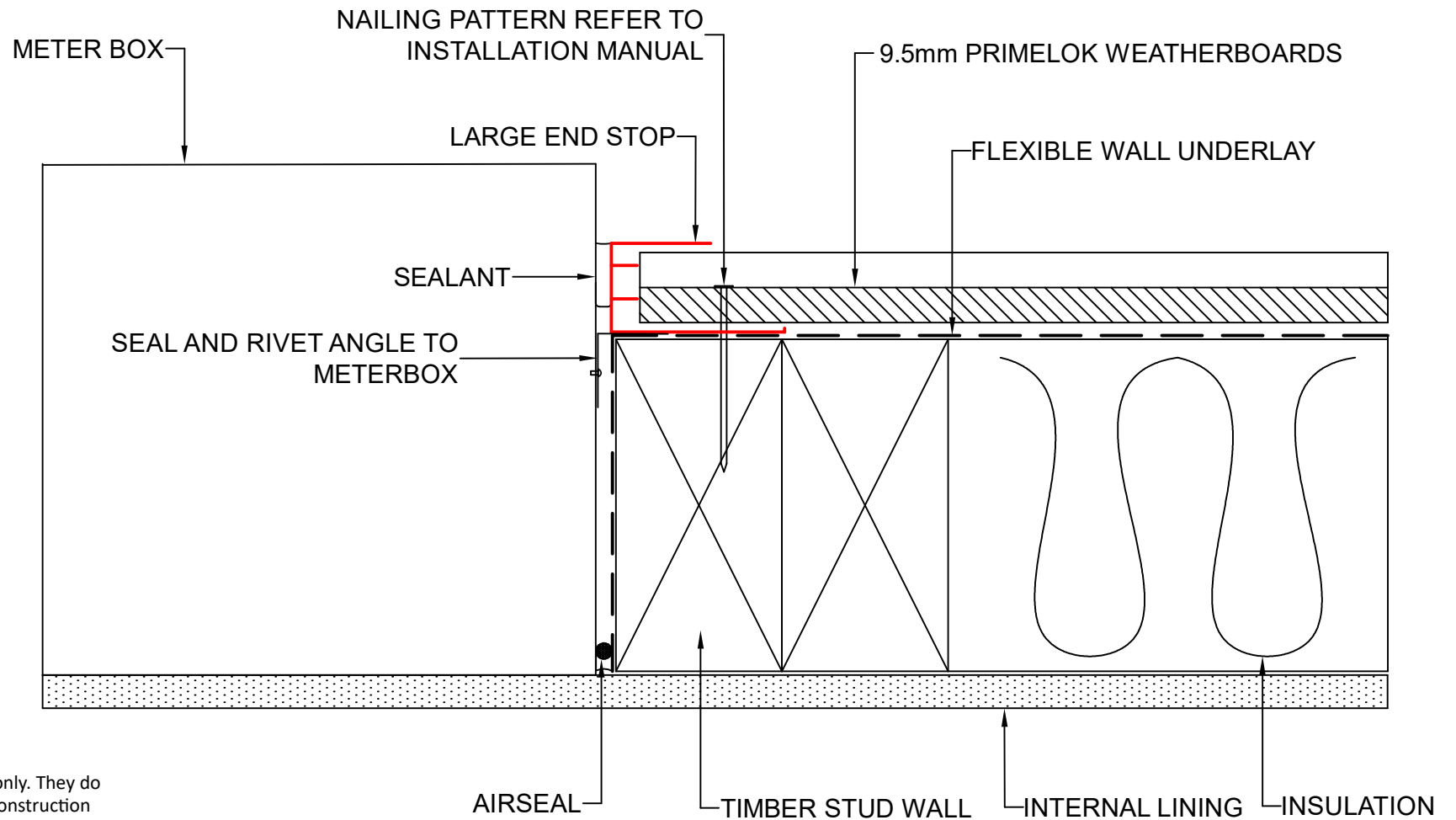
06.09.22

DRAWING No.:

NZ-PL-DF-10

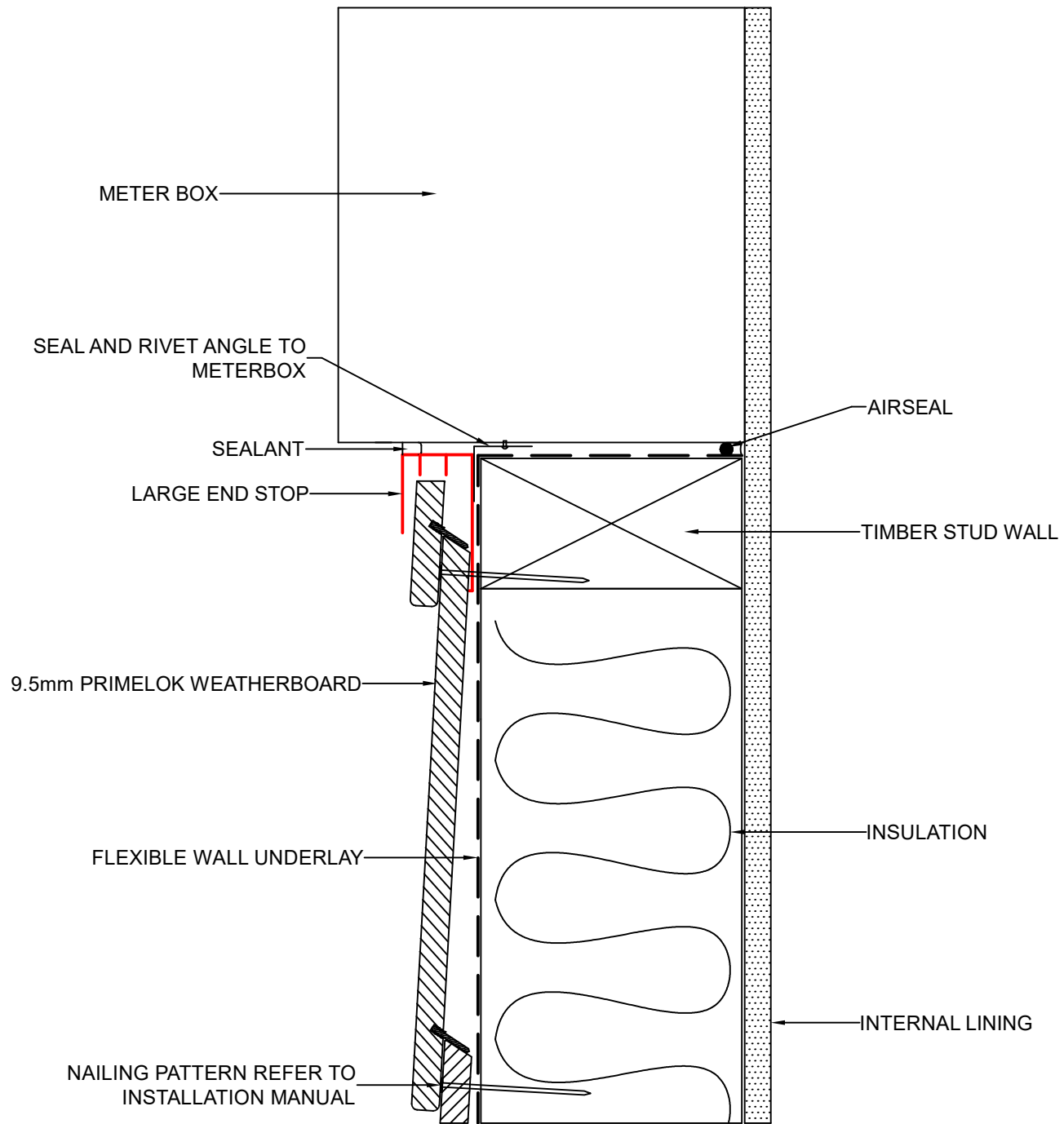
SHT SIZE

A4



These drawings are for information only. They do not contain full details required for construction and must be used in conjunction with the current issue Weathertex Installation Manual, New Zealand Building Code and Local Regulations. Weathertex recommends gaining professional advice to ensure the drawings are suitable for your project. Weathertex accepts no liability in respect to the use of these drawings.

	DRAWING NAME:	SCALE:	DRAWN BY:	CHECKED BY:	DATE:	DRAWING No.:	SHT SIZE
	DIRECT FIX INSTALLATION - METER BOX JAMB (PRIMELOK RANGE)	NTS	A.MOATE	R.STUART	06.09.22	NZ-PL-DF-11	A4



These drawings are for information only. They do not contain full details required for construction and must be used in conjunction with the current issue Weathertex Installation Manual, New Zealand Building Code and Local Regulations. Weathertex recommends gaining professional advice to ensure the drawings are suitable for your project. Weathertex accepts no liability in respect to the use of these drawings.



DRAWING NAME:  
DIRECT FIX INSTALLATION - METER BOX SILL  
(PRIMELOK RANGE)

SCALE:  
NTS

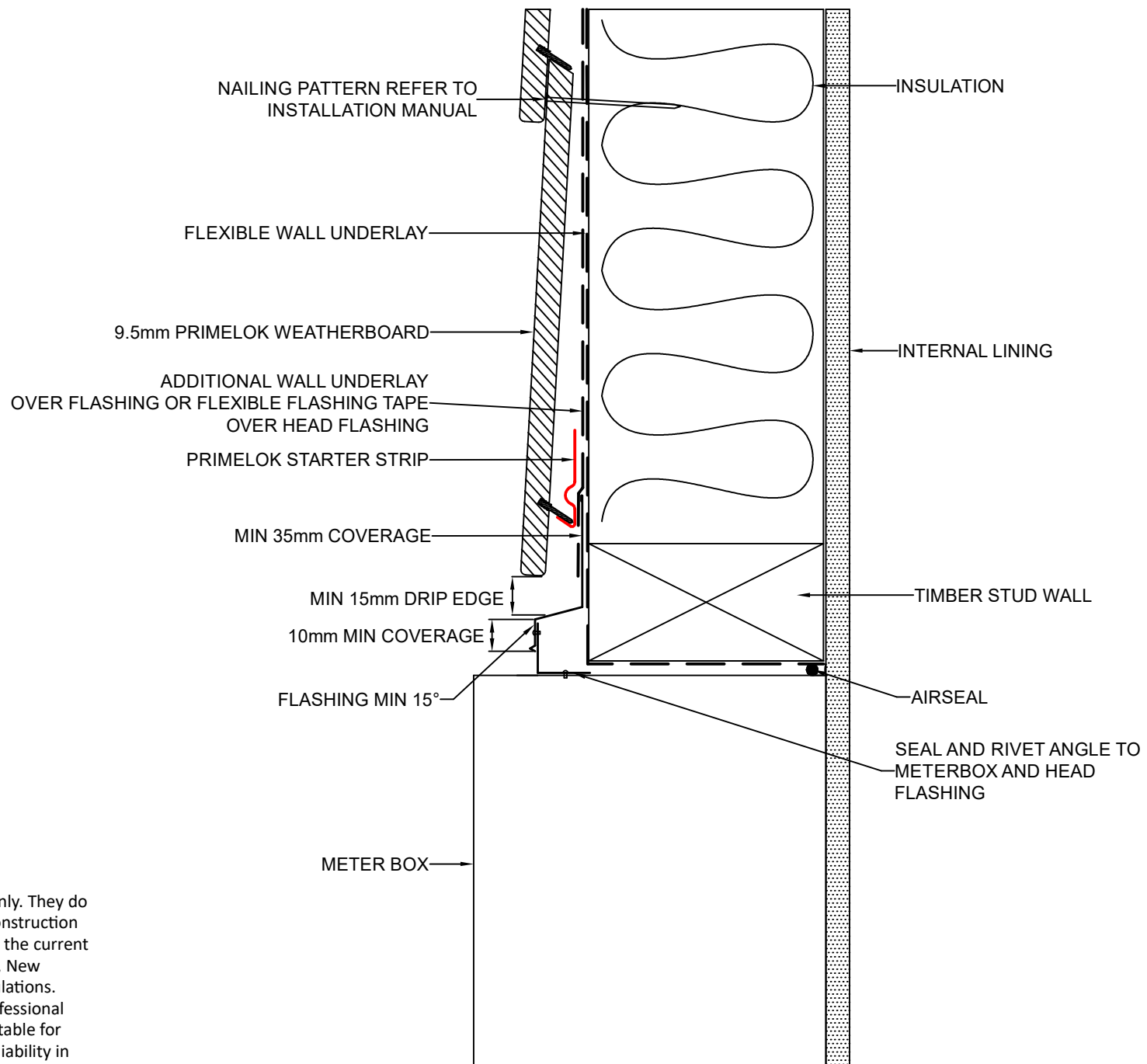
DRAWN BY:  
A.MOATE

CHECKED BY:  
R.STUART

DATE:  
06.09.22

DRAWING No.:  
NZ-PL-DF-12

SHT SIZE  
A4



These drawings are for information only. They do not contain full details required for construction and must be used in conjunction with the current issue Weathertex Installation Manual, New Zealand Building Code and Local Regulations. Weathertex recommends gaining professional advice to ensure the drawings are suitable for your project. Weathertex accepts no liability in respect to the use of these drawings.



DRAWING NAME:  
DIRECT FIX INSTALLATION - METER BOX HEAD  
(PRIMELOK RANGE)

SCALE:  
NTS

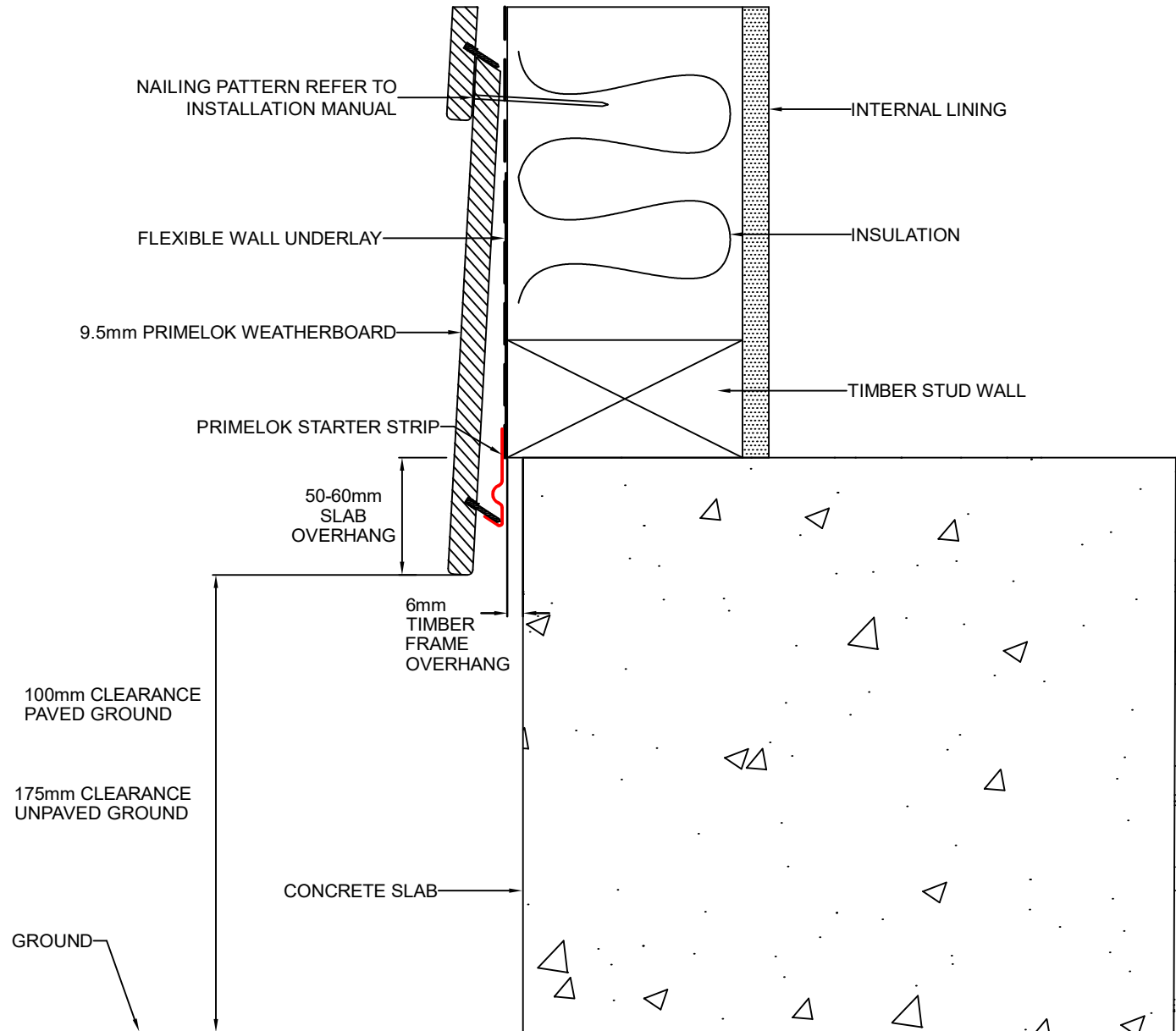
DRAWN BY:  
A.MOATE

CHECKED BY:  
R.STUART

DATE:  
06.09.22

DRAWING No.:  
NZ-PL-DF-13

SHT SIZE  
A4



These drawings are for information only. They do not contain full details required for construction and must be used in conjunction with the current issue Weathertex Installation Manual, New Zealand Building Code and Local Regulations. Weathertex recommends gaining professional advice to ensure the drawings are suitable for your project. Weathertex accepts no liability in respect to the use of these drawings.



DRAWING NAME:  
DIRECT FIX INSTALLATION - GROUND CLEARANCE  
(PRIMELOK RANGE)

SCALE:  
NTS

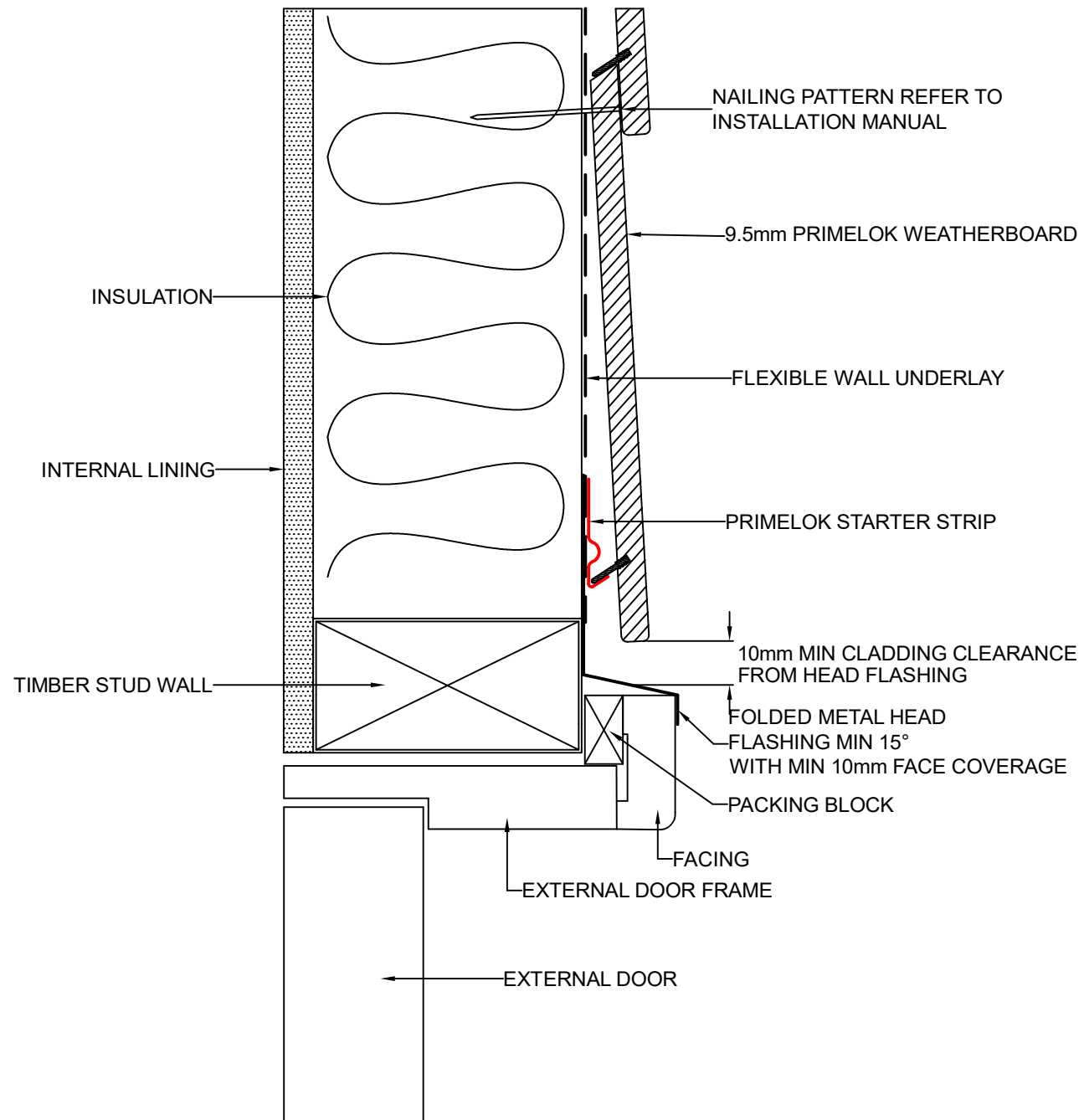
DRAWN BY:  
A.MOATE

CHECKED BY:  
R.STUART

DATE:  
06.09.22

DRAWING No.:  
NZ-PL-DF-14

SHT SIZE  
A4



These drawings are for information only. They do not contain full details required for construction and must be used in conjunction with the current issue Weathertex Installation Manual, New Zealand Building Code and Local Regulations. Weathertex recommends gaining professional advice to ensure the drawings are suitable for your project. Weathertex accepts no liability in respect to the use of these drawings.



DRAWING NAME:  
DIRECT FIX INSTALLATION - DOOR HEAD  
(PRIMELOK RANGE)

SCALE:  
NTS

DRAWN BY:  
A.MOATE

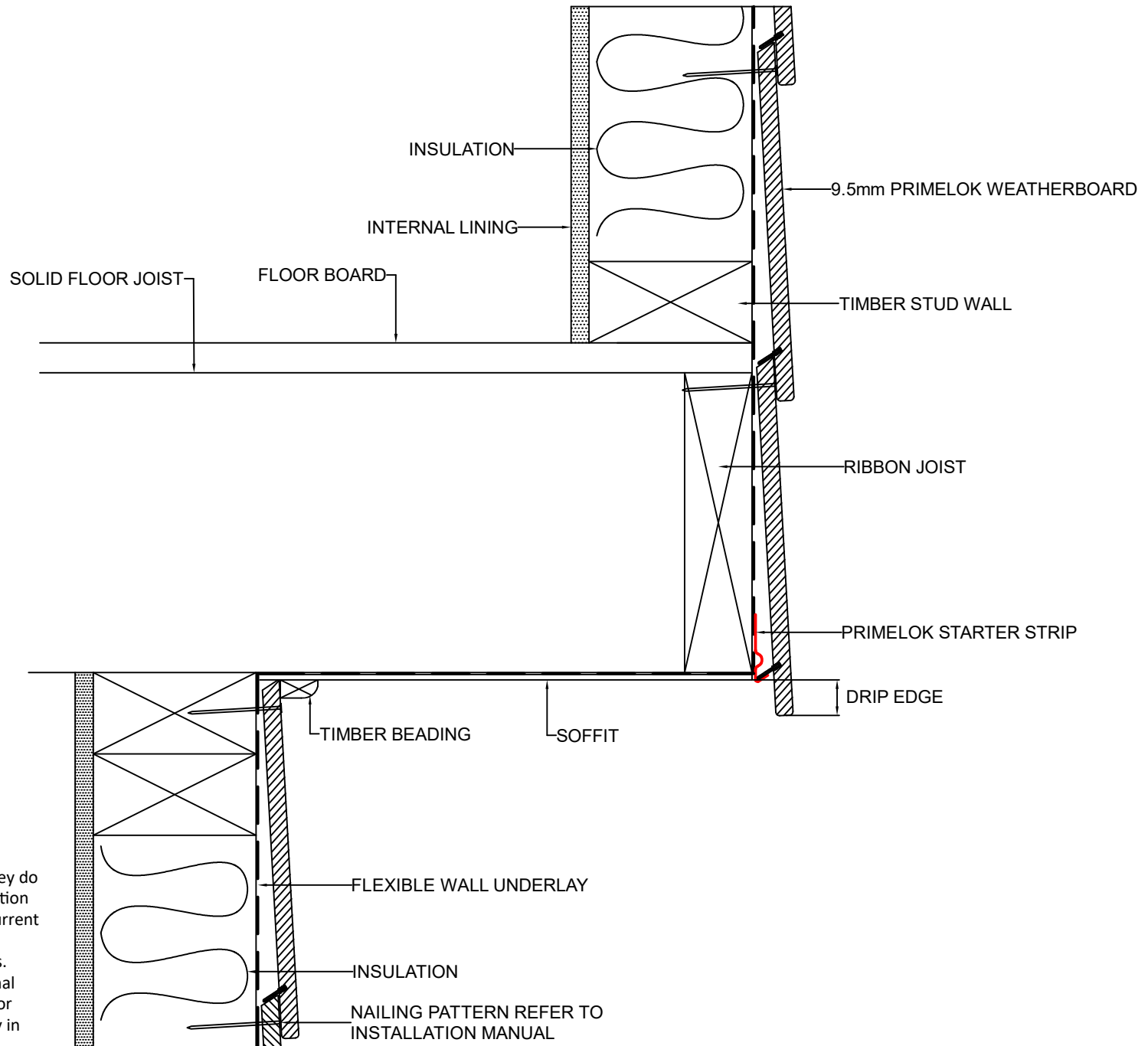
CHECKED BY:  
R.STUART

DATE:  
06.09.22

DRAWING No.:  
NZ-PL-DF-15

SHT SIZE  
A4





These drawings are for information only. They do not contain full details required for construction and must be used in conjunction with the current issue Weathertex Installation Manual, New Zealand Building Code and Local Regulations. Weathertex recommends gaining professional advice to ensure the drawings are suitable for your project. Weathertex accepts no liability in respect to the use of these drawings.



DRAWING NAME:  
DIRECT FIX INSTALLATION - CANTILEVER ROOF  
(PRIMELOK RANGE)

SCALE:  
NTS

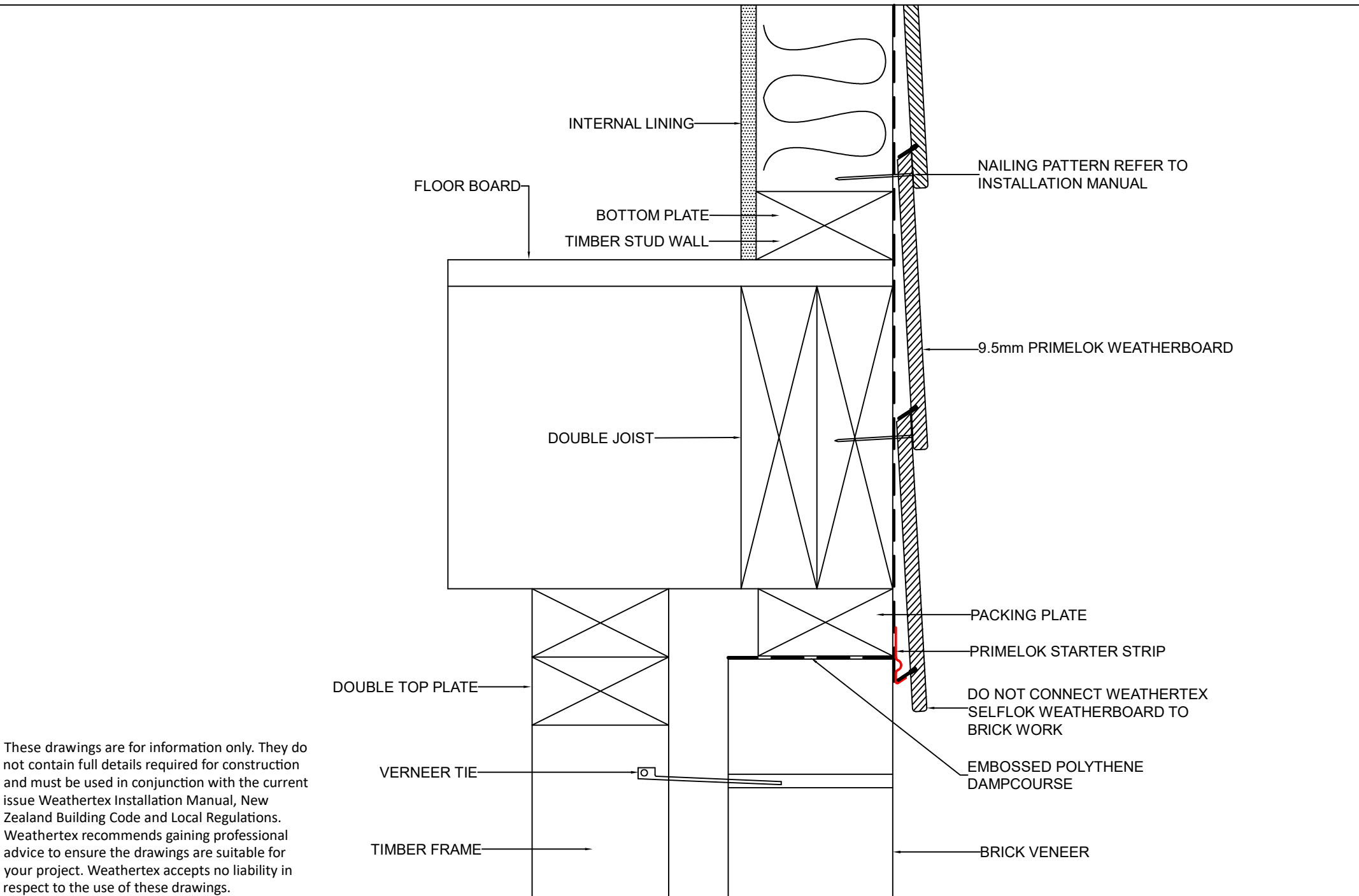
DRAWN BY:  
A.MOATE

CHECKED BY:  
R.STUART

DATE:  
06.09.22

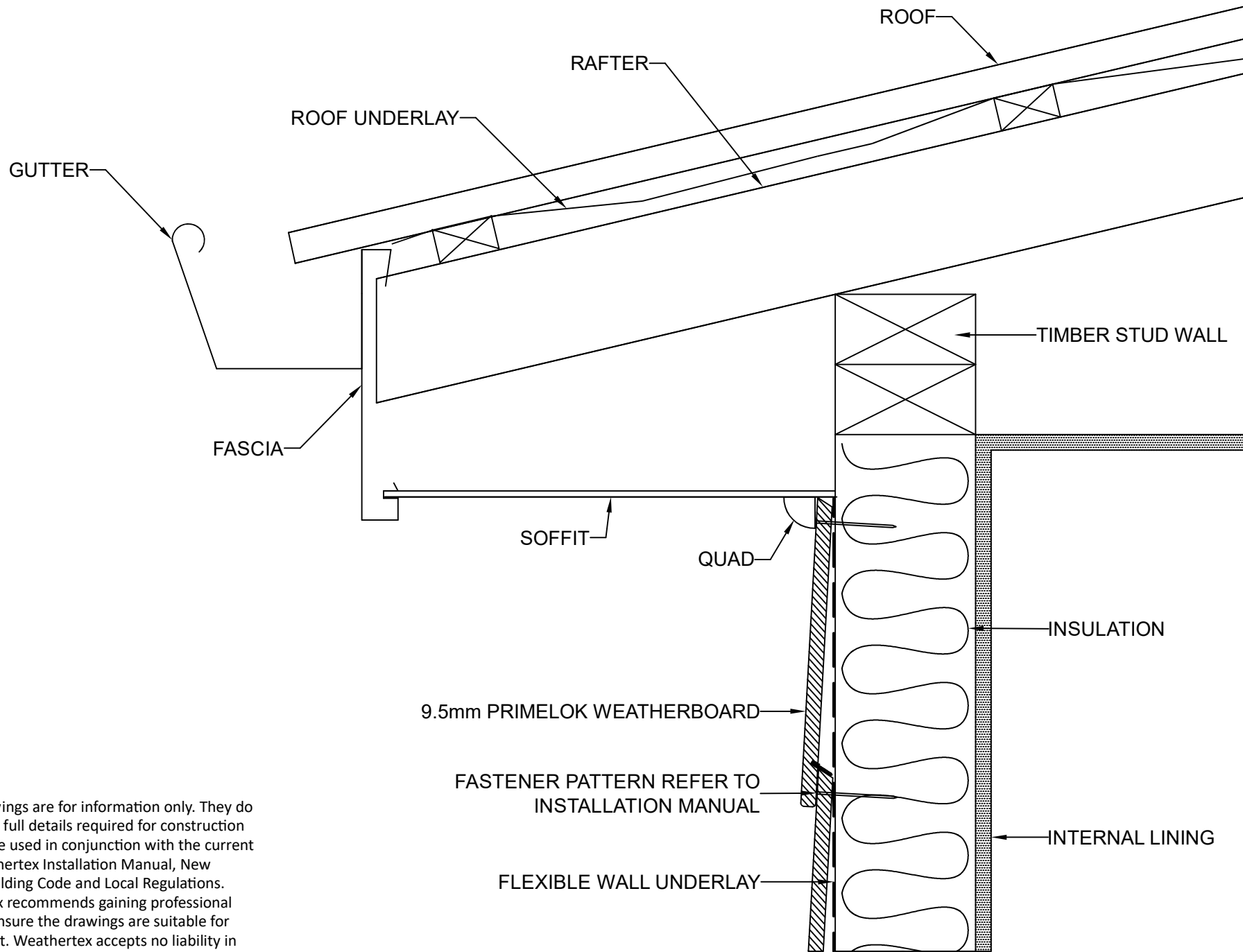
DRAWING No.:  
NZ-PL-DF-16

SHT SIZE  
A4



These drawings are for information only. They do not contain full details required for construction and must be used in conjunction with the current issue Weathertex Installation Manual, New Zealand Building Code and Local Regulations. Weathertex recommends gaining professional advice to ensure the drawings are suitable for your project. Weathertex accepts no liability in respect to the use of these drawings.

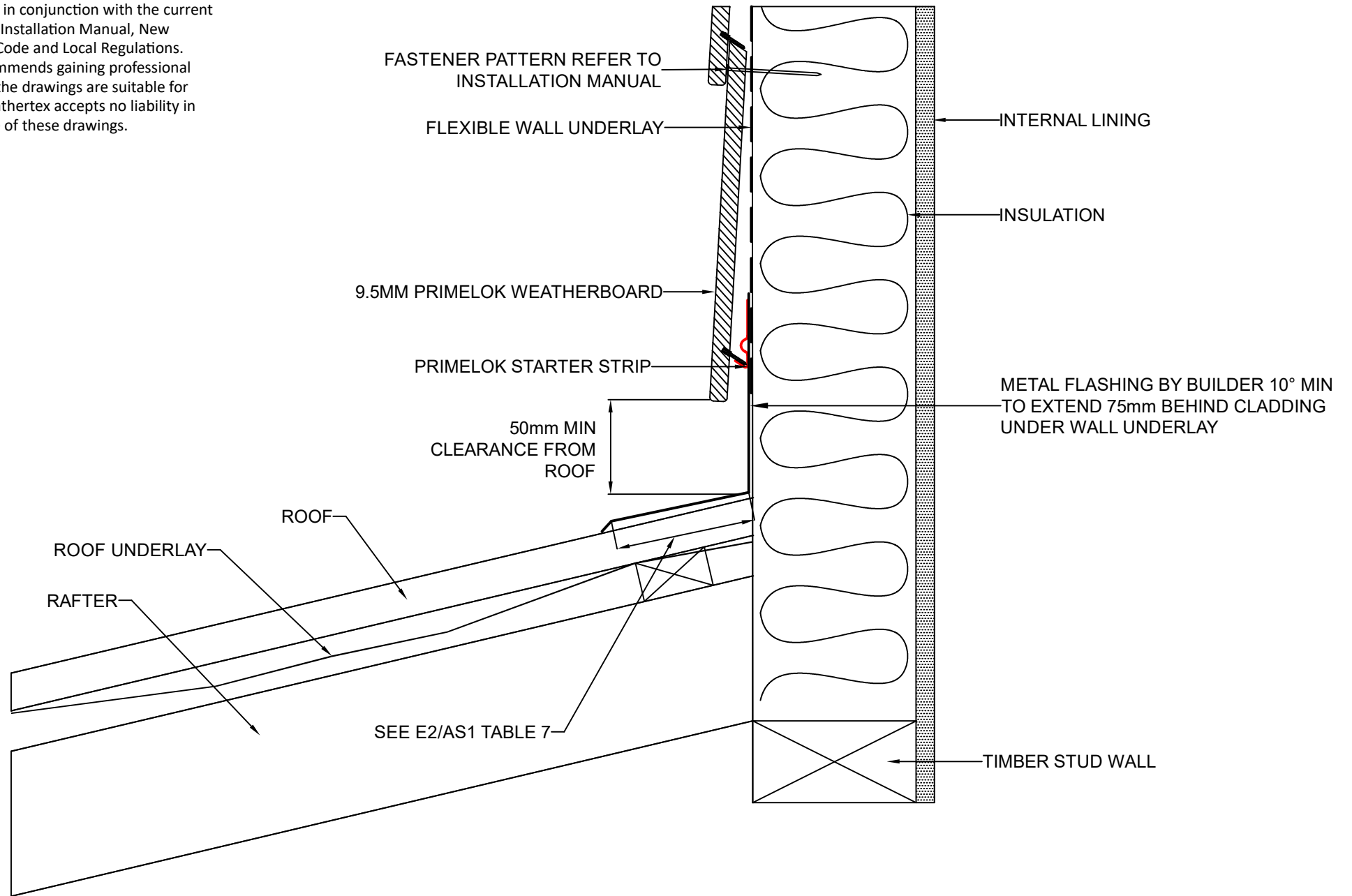
	DRAWING NAME: DIRECT FIX INSTALLATION - FLUSH WITH VENEER (PRIMELOK RANGE)	SCALE:	DRAWN BY:	CHECKED BY:	DATE:	DRAWING No.:	SHT SIZE
		NTS	A.MOATE	R.STUART	06.09.22	NZ-PL-DF-17	A4



These drawings are for information only. They do not contain full details required for construction and must be used in conjunction with the current issue Weathertex Installation Manual, New Zealand Building Code and Local Regulations. Weathertex recommends gaining professional advice to ensure the drawings are suitable for your project. Weathertex accepts no liability in respect to the use of these drawings.

	DRAWING NAME: DIRECT FIX INSTALLATION - SOFFIT (PRIMELOK RANGE)	SCALE:	DRAWN BY:	CHECKED BY:	DATE:	DRAWING No.:	SHT SIZE
		NTS	A.MOATE	R.STUART	06.09.22	NZ-PL-DF-18	A4

These drawings are for information only. They do not contain full details required for construction and must be used in conjunction with the current issue Weathertex Installation Manual, New Zealand Building Code and Local Regulations. Weathertex recommends gaining professional advice to ensure the drawings are suitable for your project. Weathertex accepts no liability in respect to the use of these drawings.



DRAWING NAME:  
DIRECT FIX INSTALLATION - ROOF CLEARANCE  
(PRIMELOK RANGE)

SCALE:  
NTS

DRAWN BY:  
A.MOATE

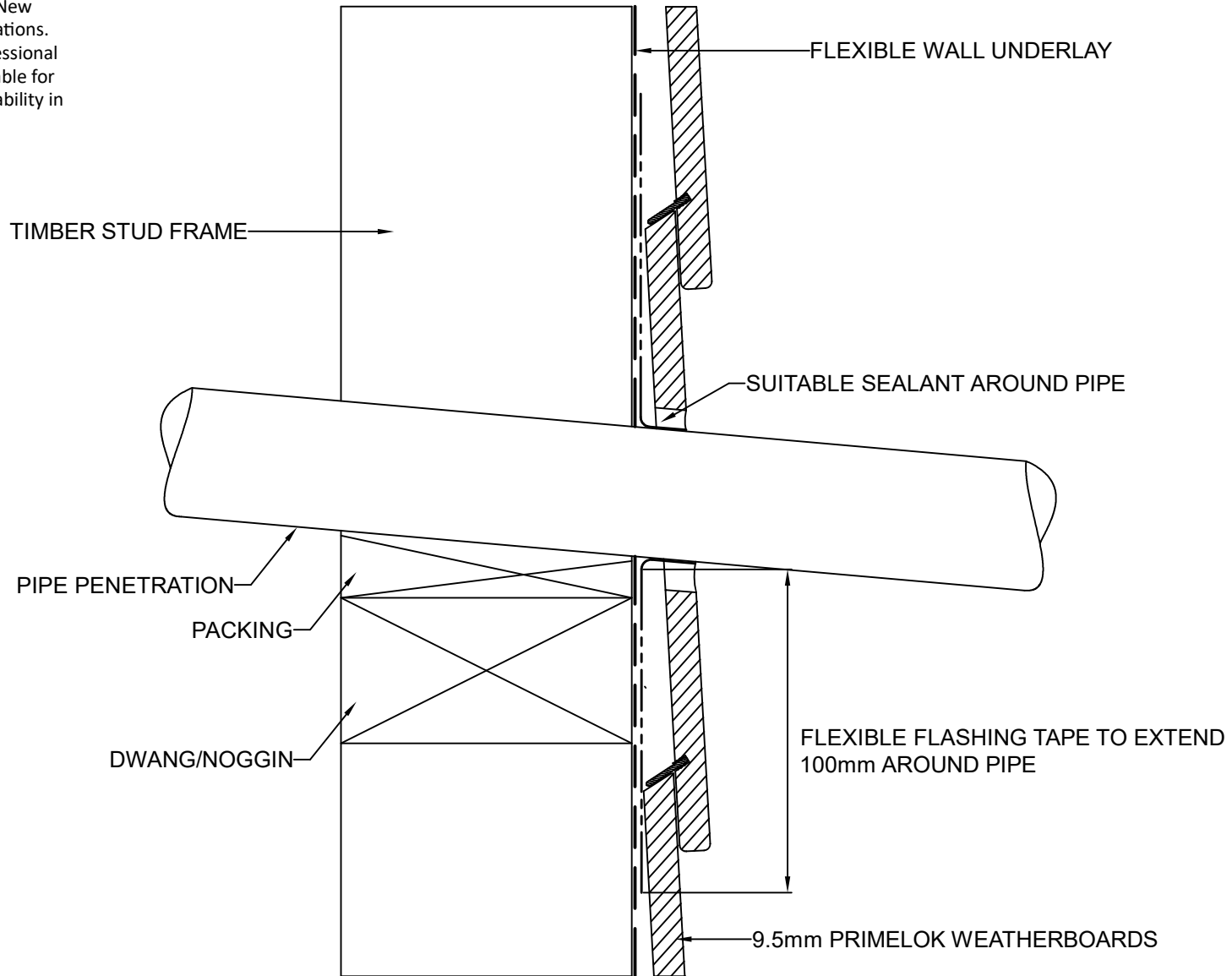
CHECKED BY:  
R.STUART

DATE:  
06.09.22

DRAWING No.:  
NZ-PL-DF-19

SHT SIZE  
A4

These drawings are for information only. They do not contain full details required for construction and must be used in conjunction with the current issue Weathertex Installation Manual, New Zealand Building Code and Local Regulations. Weathertex recommends gaining professional advice to ensure the drawings are suitable for your project. Weathertex accepts no liability in respect to the use of these drawings.



DRAWING NAME:  
DIRECT FIX INSTALLATION - PIPE PENETRATION  
(PRIMELOK RANGE)

SCALE:  
NTS

DRAWN BY:  
A.MOATE

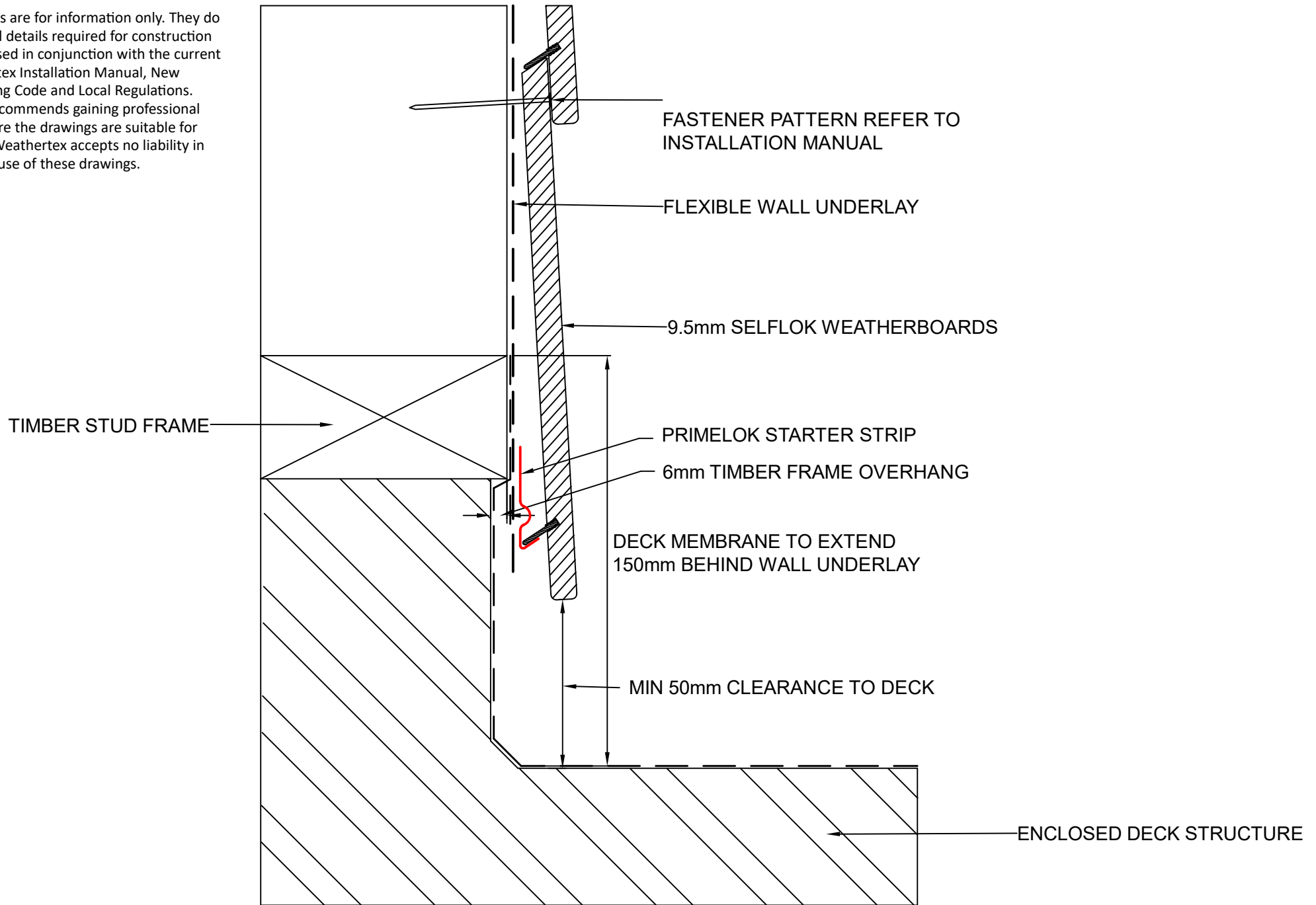
CHECKED BY:  
R.STUART

DATE:  
06.09.22

DRAWING No.:  
NZ-PL-DF-20

SHT SIZE  
A4

These drawings are for information only. They do not contain full details required for construction and must be used in conjunction with the current issue Weathertex Installation Manual, New Zealand Building Code and Local Regulations. Weathertex recommends gaining professional advice to ensure the drawings are suitable for your project. Weathertex accepts no liability in respect to the use of these drawings.



DRAWING NAME:  
DIRECT FIX INSTALLATION - MEMBRANE DECK  
(PRIMELOK RANGE)

SCALE:  
NTS

DRAWN BY:  
A.MOATE

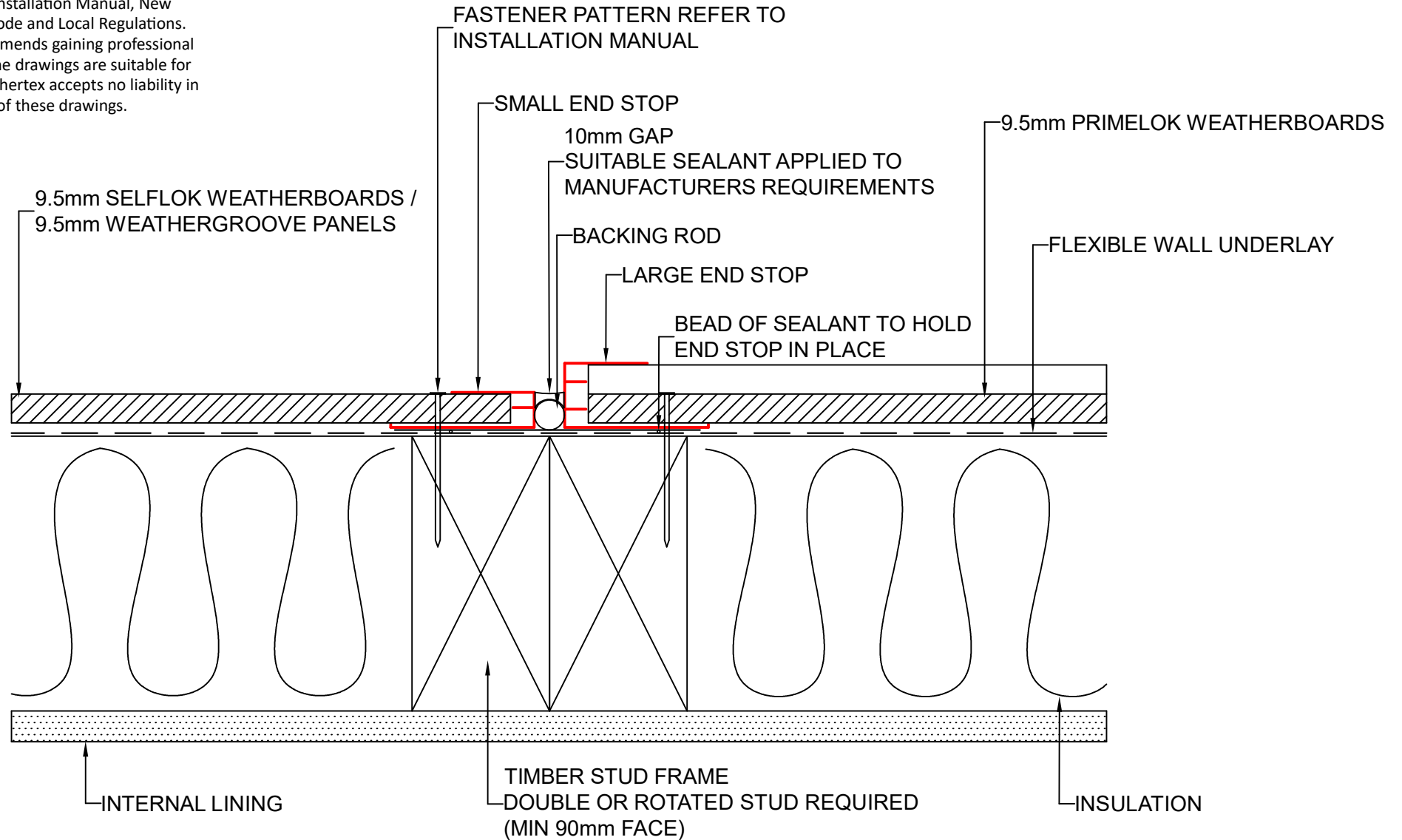
CHECKED BY:  
R.STUART

DATE:  
06.09.22

DRAWING No.:  
NZ-PL-DF-21

SHT SIZE  
A4

These drawings are for information only. They do not contain full details required for construction and must be used in conjunction with the current issue Weathertex Installation Manual, New Zealand Building Code and Local Regulations. Weathertex recommends gaining professional advice to ensure the drawings are suitable for your project. Weathertex accepts no liability in respect to the use of these drawings.



DRAWING NAME:  
DIRECT FIX INSTALLATION - BACK TO BACK END STOP  
(PRIMELOK RANGE)

SCALE:  
NTS

DRAWN BY:  
A.MOATE

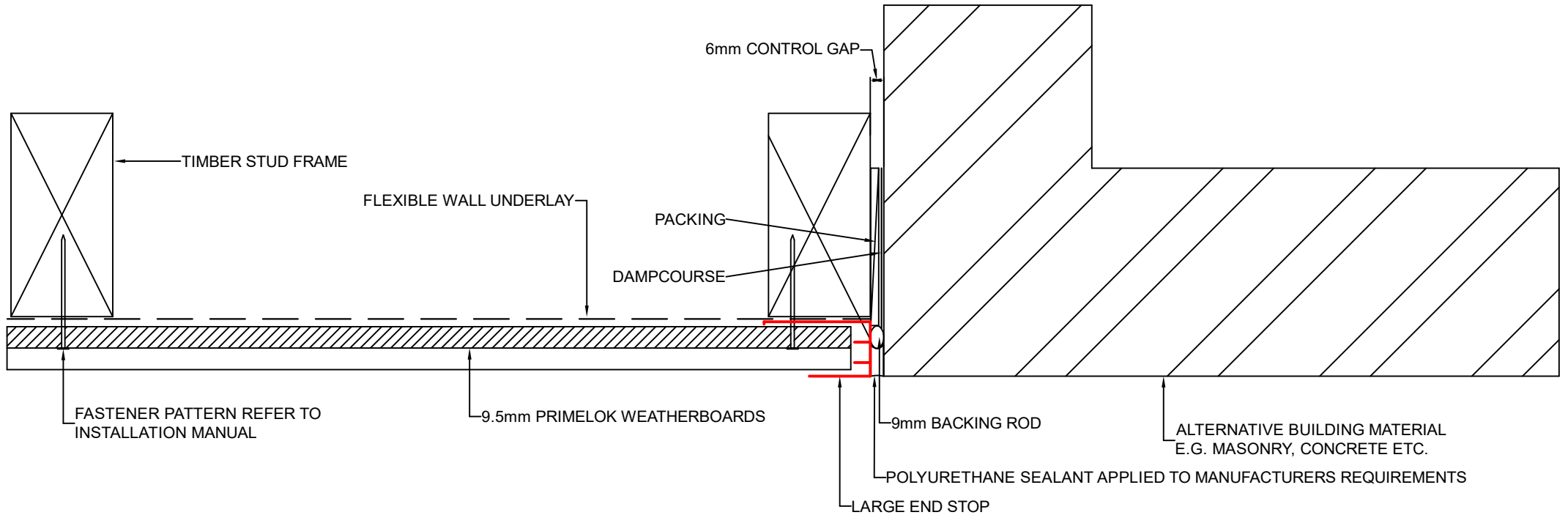
CHECKED BY:  
R.STUART

DATE:  
06.09.22

DRAWING No.:  
NZ-PL-DF-22

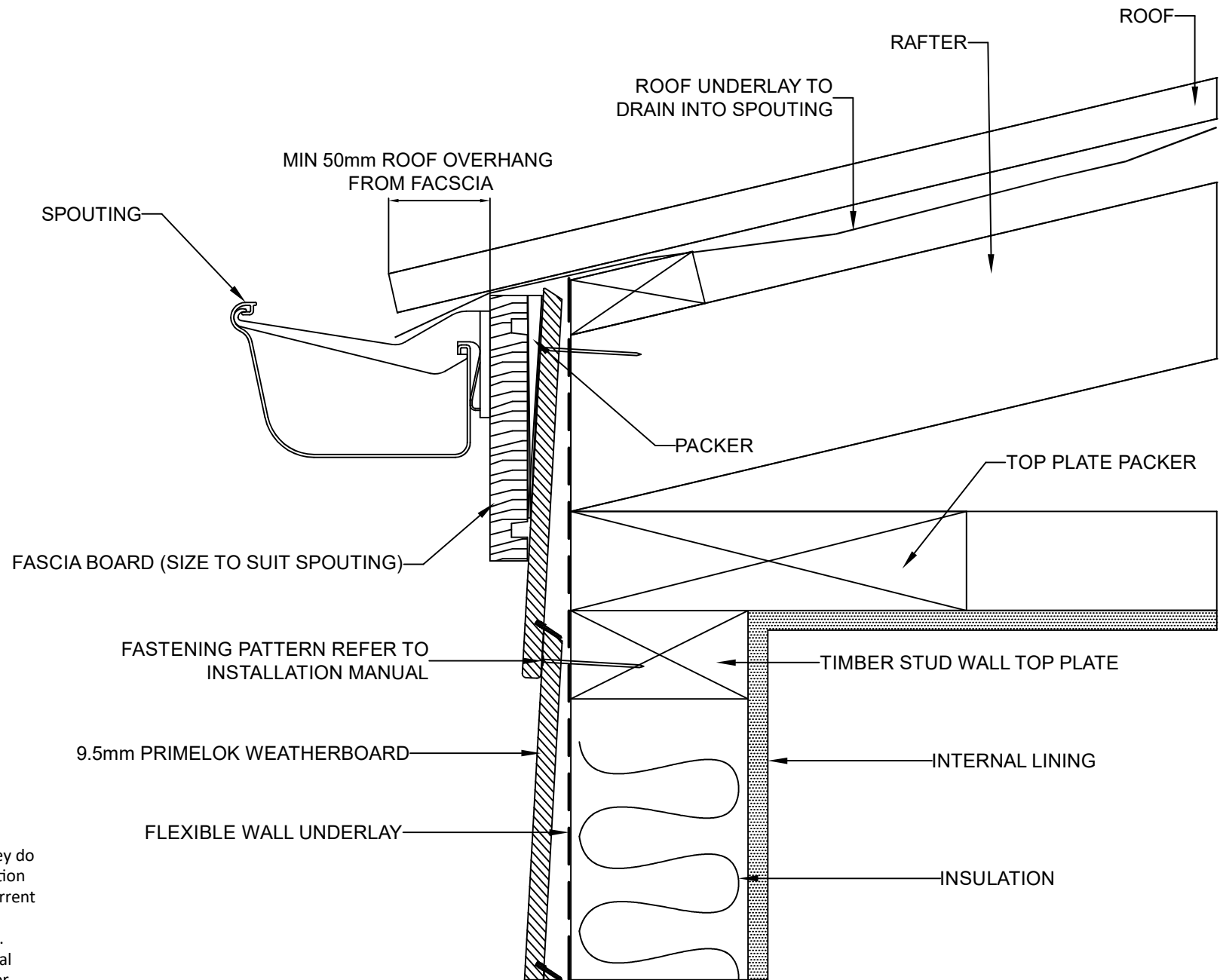
SHT SIZE  
A4

These drawings are for information only. They do not contain full details required for construction and must be used in conjunction with the current issue Weathertex Installation Manual, New Zealand Building Code and Local Regulations. Weathertex recommends gaining professional advice to ensure the drawings are suitable for your project. Weathertex accepts no liability in respect to the use of these drawings.



	<b>DRAWING NAME:</b> DIRECT FIX INSTALLATION - END STOP TO ALTERNATIVE MATERIALS (PRIMELOK RANGE)	<b>SCALE:</b>	<b>DRAWN BY:</b>	<b>CHECKED BY:</b>	<b>DATE:</b>	<b>DRAWING No.:</b>	<b>SHT SIZE</b>
		NTS	A.MOATE	R.STUART	06.09.22	NZ-PL-DF-23	A4





These drawings are for information only. They do not contain full details required for construction and must be used in conjunction with the current issue Weathertex Installation Manual, New Zealand Building Code and Local Regulations. Weathertex recommends gaining professional advice to ensure the drawings are suitable for your project. Weathertex accepts no liability in respect to the use of these drawings.



DRAWING NAME:  
 DIRECT FIX INSTALLATION - NO SOFFIT  
 (PRIMELOK RANGE)

SCALE:

NTS

DRAWN BY:

A.MOATE

CHECKED BY:

R.STUART

DATE:

29.11.22

DRAWING No.:

NZ-PL-DF-24

SHT SIZE

A4