

**Armstrong**Flooring™



**Timberline® Plus**  
*Heterogenous Vinyl Sheet*

Like a Rock Plus | 4X373593

# Timberline® Plus

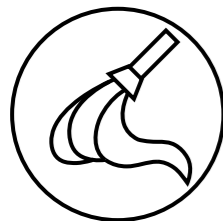
## *Heterogenous Vinyl Sheet*

Timberline® Plus is a premium, commercially graded vinyl sheet flooring solution that brings the natural beauty of timber to your space, with the added benefits of superior durability and performance. Available in a wide selection of authentic timber look designs, this flooring combines aesthetic appeal with practical functionality, making it a versatile choice for any setting.

At the heart of Timberline® Plus is its advanced construction, which includes a robust 0.7mm wear layer with a UV cured PUR coating. This protective layer not only enhances the longevity of the floor but also reduces both initial and ongoing maintenance efforts. The Aluminum Oxide in the PUR coating further enhances the surface by providing superior resistance to scratches and scuffs, ensuring the floor maintains its pristine appearance even in high-traffic environments.

Thanks to its high performance and resilience, Timberline® Plus is ideally suited for a broad range of applications. It's a perfect flooring solution for residential homes and apartments, providing the warmth of timber without the associated upkeep. Additionally, it meets the demanding requirements of healthcare and aged care facilities, retirement villages, schools, childcare centres, and retail environments, where both durability and ease of maintenance are essential.

## *Features & Benefits*



### **LOW MAINTENANCE**

PUR coating making it easy to clean and maintain



### **SCRATCH RESISTANT**

Family and pet friendly for everyday living



### **STAIN RESISTANT**

For peace of mind for life's mishaps



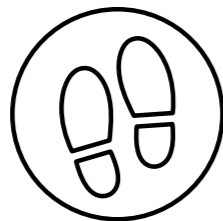
### **HYGIENIC SURFACE**

Helps prevent mould and bacteria growth



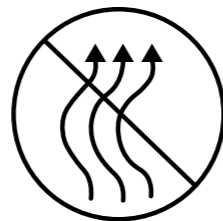
### **SLIP RESISTANT**

Reduce slips to create a safer environment\*



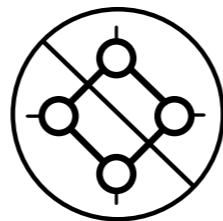
### **HIGH DURABLE**

Family and pet friendly for everyday living



### **ULTRA LOW VOC**

Ideal for those with allergies and chemical sensitivities



### **PHTHALATE FREE**

Made without phthalates for a healthier environment

\*Refer to the Technical Data for slip resistant specifications



Timberline® Plus

## Solu Plus

---

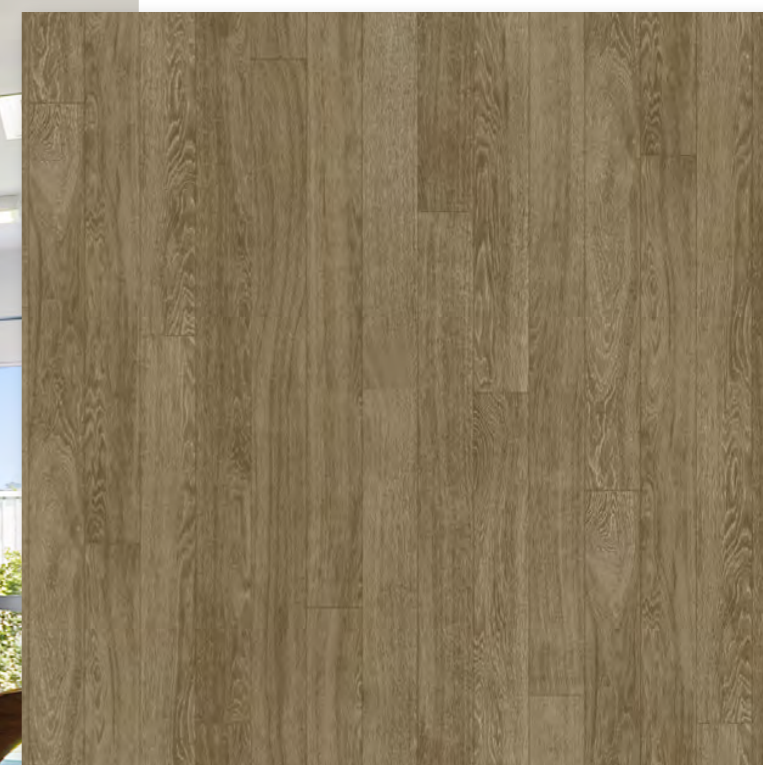
The classic wood look design offers a timeless and elegant appeal to any interior.



*Bannockburn P-12 College*

Timberline® Plus  
**Like a Rock Plus**

The understated wood tone and colour creates a warm and inviting atmosphere.



*Green Leaves Early Learning Centre*

Timberline® Plus

## Bonafide Plus

---

The dark timber finish enhances neutral spaces, providing a perfect backdrop for vibrant accents.



*Breast Screen Queensland*

# Timberline® Plus

## Colour Palette

Roll size: 2.0m x 1.83m x 25m



**Blanc Plus** | 4X032403

LRV 44.38



**Too Right Plus** | 4X041403

LRV 25.37



**Life is a Plus** | 4X373473

LRV 34.15



**Oiled Plank Plus** | 4X373723

LRV 23.16



**Obra Plus** | 4X062203

LRV 34.95



**Solu Plus** | 4X061103

LRV 29.01



**Blackbutt Plus** | 4X373701

LRV 27.78



**Spotted Gum Plus** | 4X373702

LRV 24.78

Colour swatches and photographic images may vary between digital brochure to real life product and are to be used as a guide only. It is recommended you request an actual product sample by contacting your Armstrong Flooring representative or ordering online via our [AU website](#) or [NZ website](#).

# Timberline® Plus

## Colour Palette

Roll size: 2.0m x 1.83m x 25m



**Tasmanian Oak Plus** | 4X373711

LRV 34.74



**Hang Ten Plus** | 4X373483

LRV 24.40



**Calde Plus** | 4X031303

LRV 30.74



**Luci Plus** | 4X031603

LRV 23.05



**Solid Plus** | 4X373573

LRV 17.78



**Cacao Plus** | 4X373703

LRV 12.46



**Stone Grey Plus** | 4X373733

LRV 24.41



**Well Versed Plus** | 4X373743

LRV 14.52

Colour swatches and photographic images may vary between digital brochure to real life product and are to be used as a guide only. It is recommended you request an actual product sample by contacting your Armstrong Flooring representative or ordering online via our [AU website](#) or [NZ website](#).

# Timberline® Plus

## Colour Palette

Roll size: 2.0m x 1.83m x 25m



**Cowabunga Plus** | 4X373493

LRV 20.42



**Like a Rock Plus** | 4X373593

LRV 18.47



**Ash Grey Plus** | 4X373708

LRV 17.08



**Bonafide Plus** | 4X373603

LRV 8.33



**Blanc Plus** | 4X032403

Colour swatches and photographic images may vary between digital brochure to real life product and are to be used as a guide only. It is recommended you request an actual product sample by contacting your Armstrong Flooring representative or ordering online via our [AU website](#) or [NZ website](#).



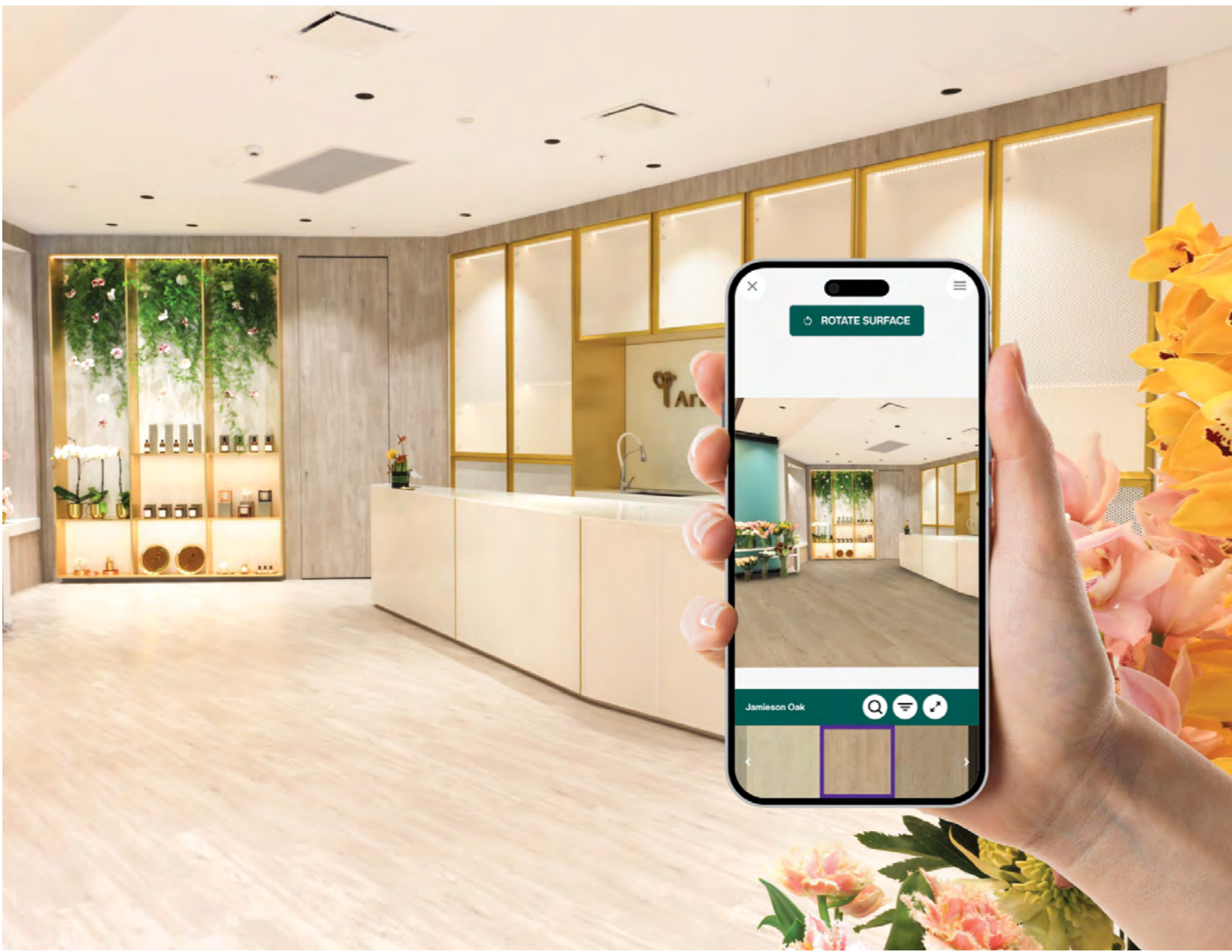
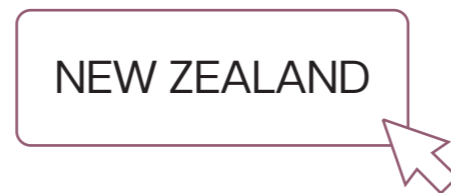
# Timberline® Plus

## Room Visualiser

Flooring is the foundation of any space and an element you want to get right. Our Room Visualiser tool will bring your vision to life and help make the decision-making process easier, all from the convenience of your desktop, mobile or tablet device.

Simply upload a photo of your space or select one of our pre-existing room scenes, and then choose the flooring colour you are interested in. Watch the space transform as you immerse yourself in the various flooring colours and design options.

Start designing today by clicking on your relevant country below.



# Timberline® Plus

## Technical Data

### Product Classification

Type of floor covering	EN ISO 10582	Heterogeneous sheet vinyl
Binder Content	EN ISO 10582	Type I
Classification (Use Area)	ISO 10874	Domestic: 23 (Heavy) Commercial: 34 (Very Heavy) Light Industrial: 43 (Heavy)

Warranty*	Domestic Commercial - available upon request	25 years 15 years
-----------	---	----------------------

\*All warranties are in addition to any rights consumers may have under Australian and New Zealand consumer laws. Terms and conditions apply - for full information in respect to the scope of the residential warranty, please see [armstrongflooring.au](http://armstrongflooring.au) or [armstrongflooring.co.nz](http://armstrongflooring.co.nz) or contact our Head Office. For the commercial warranty, contact your Armstrong Flooring representative.

### Physical Properties

Polyurethane reinforced	-	PUR + Aluminium Oxide			
Colours (Standard)	-	20			
Overall thickness	ISO 24346	2.0mm			
Wear layer thickness	ISO 24340	0.70mm			
Surface texture	-	Embossed			
Roll width	ISO 24341	183m			
Roll length	ISO 24341	25m			
Coverage/roll	-	45.75m <sup>2</sup>			
Product weight/m <sup>2</sup>	ISO 23997	2.78kg/m <sup>2</sup>			
Pattern	Calde Plus, Blanc Plus, Solu Plus, Too Right Plus, Luci Plus	Obra Plus, Like a Rock Plus	Life is a Plus, Hang Ten Plus, Cowabunga Plus	Cacao Plus, Blackbutt Plus, Spotted Gum Plus, Tasmanian Oak Plus, Stone Grey Plus, Ash Grey Plus, Bona Fide Plus, Solid Plus	Oiled Plank Plus, Well Versed Plus
Plank size	625x112.5	1250x90	Random 325-750 x 65	1250x180	Random 575-1250x128
Repeat		900x1250 (1/2 dropped)			900x1250 (1/2 dropped/reverse)

### Installation

	To current AS/NZS 1884 and Armstrong Flooring Installation Instructions - Heterogeneous Sheet	Full stick, heat weld or seabond seams
--	---	--

### Sustainability

GreenTag GreenRate	-	GreenRate Level A
GreenTag Product Health Declaration	-	Platinum Health
Best Environmental Practice PVC	-	Yes
TVOC Emissions	-	Compliant with Green Building Council low VOC emission rates

### Technical Performance

Slip Resistance	AS 4586 Wet Pendulum (Appendix A) Oil Wet (Appendix D)	P3 R10
Fire Resistance (Floor)	AS ISO 9239-1 Critical Radiant Flux (CHF Value) Smoke Development Rate	≥ 4.5kW/m <sup>2</sup> ≤ 750%min
Fire Resistance (Walls)	AS 5637.1 Cone Calorimeter Average specific extinction area	Group 3 > 250m <sup>2</sup> /kg
Other		
Colour fastness	ISO 105-B02, Method 3	Pass
Residual indentation	ISO 24343-1	Pass
Chemical resistance	-	Good resistance
Flexibility	ISO 24344, Method A	Pass
Castor chair	ISO 4918	Pass
Seam strength	ISO 16906	Pass
Static electrical propensity	EN 1815	Antistatic ≤ 2kV

### Accreditation

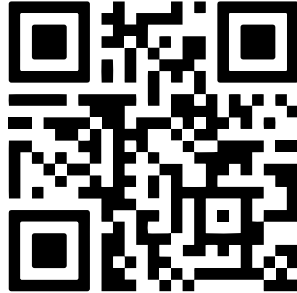
Manufactured under accredited ISO 9001 quality and ISO 14001 environmental management systems

All specifications are current as at date of publication and may be changed without notice. For current and complete specifications please visit [armstrongflooring.au](http://armstrongflooring.au) or [armstrongflooring.co.nz](http://armstrongflooring.co.nz). All Armstrong Flooring products must be installed in accordance with the relevant Australian and/or New Zealand applicable standards and the Armstrong Flooring Installation Instructions. Variations may occur between samples, photographic images, and batches in terms of colour, shade, pattern or similar.



Learn more

[www.armstrongflooring.au/timberlineplus](http://www.armstrongflooring.au/timberlineplus)



[www.armstrongflooring.co.nz/timberlineplus](http://www.armstrongflooring.co.nz/timberlineplus)



---

**Armstrong**Flooring™

**Australia**

29-39 Mills Road, Braeside VIC 3195  
1800 632 624  
customerservices@armstrongflooring.au  
www.armstrongflooring.au

**New Zealand**

39/332 Great North Road, Grey Lynn, Auckland 1021  
0800 449 649  
customerservices@armstrongflooring.co.nz  
www.armstrongflooring.co.nz