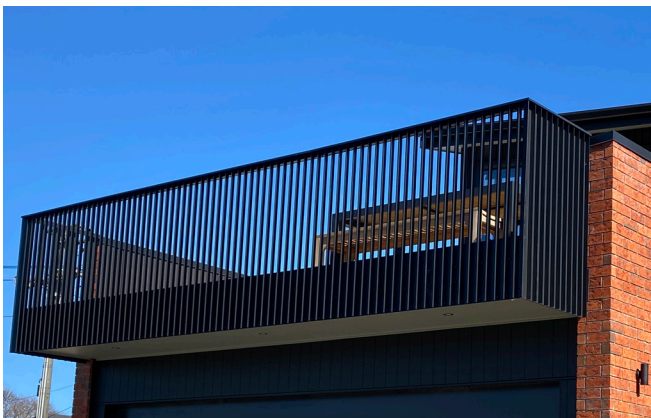


Nicks Panels are all custom made in our Silverdale factory and can be supplied with matching posts. Pedestrian gates and driveway gates will be made to the size of your driveway in our fabrication department, and can be supplied with suitable gate motors for a qualified technician to install. Typical lead times are 2-3 weeks.

## Design Details

Nicks Plated Balustrade panels don't need posts. They are attached to the deck joist or balcony slab by bolting through the large plate that forms the bottom of the panel. The design is also pool compliant for balustrade around your deck.

- ◆ Long lasting and low maintenance
- ◆ Lasts longer than timber
- ◆ No warping or fading
- ◆ Smooth finish and clean look



Plated Nicks Balustrade

# NICKS

## Aluminium Angle Picket Fence Panel

A modern architectural styled panel with striking vertical angle picket closely spaced to accentuate the vertical lines of the house. Fence panels, balustrade panels and a matching series of gates compliment the range.

### Specifications

Heights	1000mm, 1200mm, 1500mm, 1800mm
Width	2360mm
Pickets	Aluminium 40 x 3 Equal Angle with 40 gaps
Rail	Two Piece Aluminium 40 x 40 x 2.0mm
Posts*	Aluminium 65 x 65 x 2.5mm SHS

\* Recommended

#### Price

\$\$\$\$\$

#### High-End Look

★★★★★

#### Ease of Installation

★★★★★

#### Lifespan

★★★★★

#### Low Maintenance

★★★★★

### Applications



Residential



Schools



Multi Unit Dwelling

- ◆ Infill panels on block walls
- ◆ Privacy fence panels
- ◆ Infill panels on balustrade
- ◆ Slide, Swing and Cantilever Gates and custom panels also available made and priced to order.



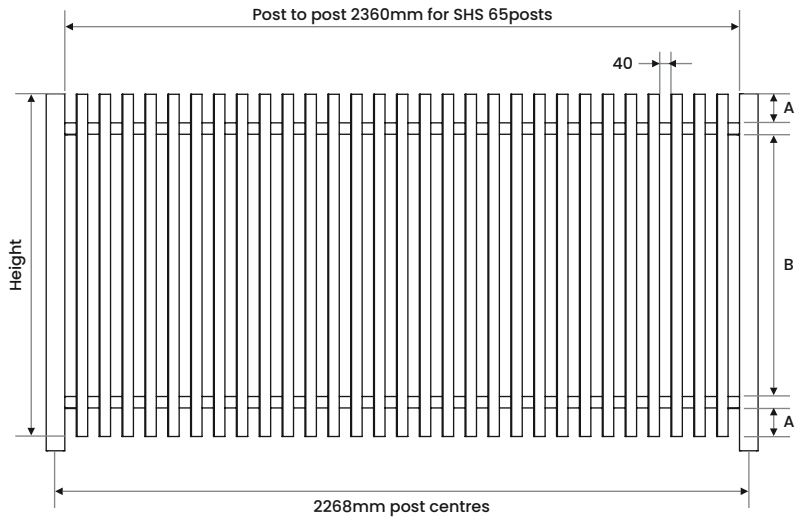
Posted Nicks



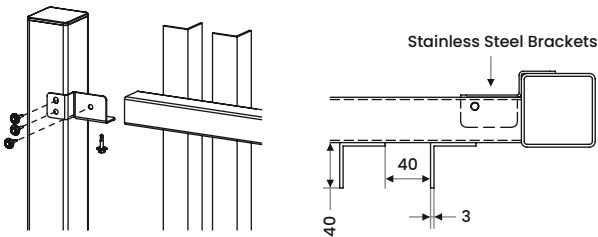
### Fence Panel (with posts)

Height	A	B
1.0m	100mm	720mm
1.2m	100mm	920mm
1.5m	150mm	1120mm
1.8m	200mm	1320mm

Can be used as a 1100mm high balustrade panel at 1470mm wide (with 65 SHS posts)



### Rail Brackets (for panels with posts)



### Balustrade Panel (with plate)

- ◆ Maximum width shown
- ◆ No posts required
- ◆ 300mm x 6mm Plate for face fixing to deck joist.
- ◆ 1.1m height

