

PRODUCT TECHNICAL DATASHEET

FANTASMA



edgesmith.co.nz

© 2024



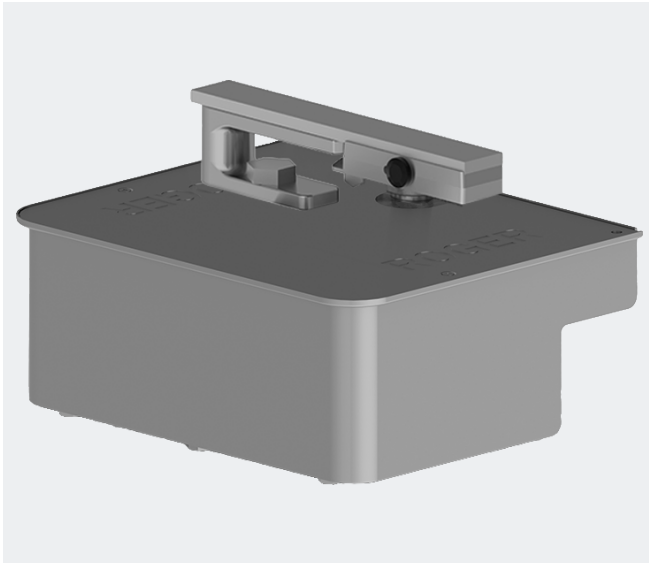
SWING



SLIDING



CANTILEVER



FANTASMA BR21

Electromechanical underground motor, BRUSHLESS, low voltage, super intensive use, with native encoder onboard, irreversible, ideal for swing gates with leaf up to 4.5 mt. Standard version with 2 mt cable.



Brushless



Intensive Use

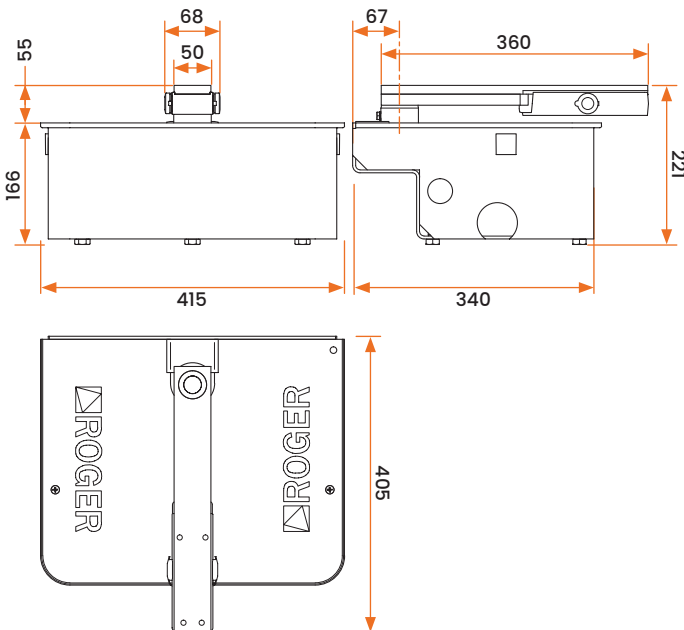


High Speed



Digital Encoder

Dimensions



Note: All measurements in the drawings are in millimetres

Operating Limits



Max Gate Weight	800 kg
Maximum Gate Length	4.5m
Power Line Supply	230V AC - 50Hz
Motor Power Supply	24V
Power Rating	200W
Duty Cycle	100% Intensive Use
Thrust	50 - 300Nm
Operating Temperature	-20+55°C
Protection Level	IP67
Reductor Type	Irreversible
Manoeuvre Speed	1.2 Rpm
Opening Time at 90°	19-29s
Limit Switch	Mechanical Stoppers
Encoder	Digital encoder + SENSORLESS 48 PPR
Digital Controllers	230V: EDGE1/BOX
Maximum Opening	105° (optional 125°-360°)
Power Supply Cable Length	2m
Bearing on Main Shaft	Standard



SWING



SLIDING



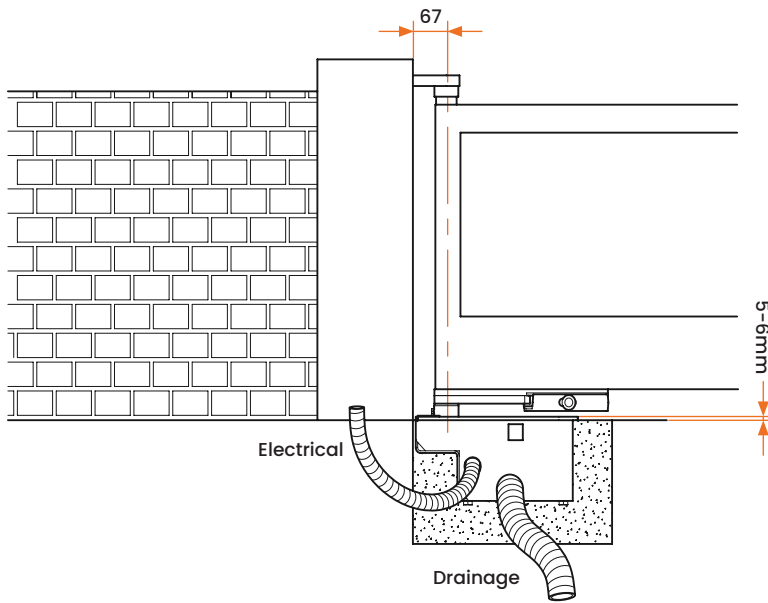
CANTILEVER



FANTASMA BR21

Installation Details

The figure shows a type of installation with the base housing embedded in concrete.

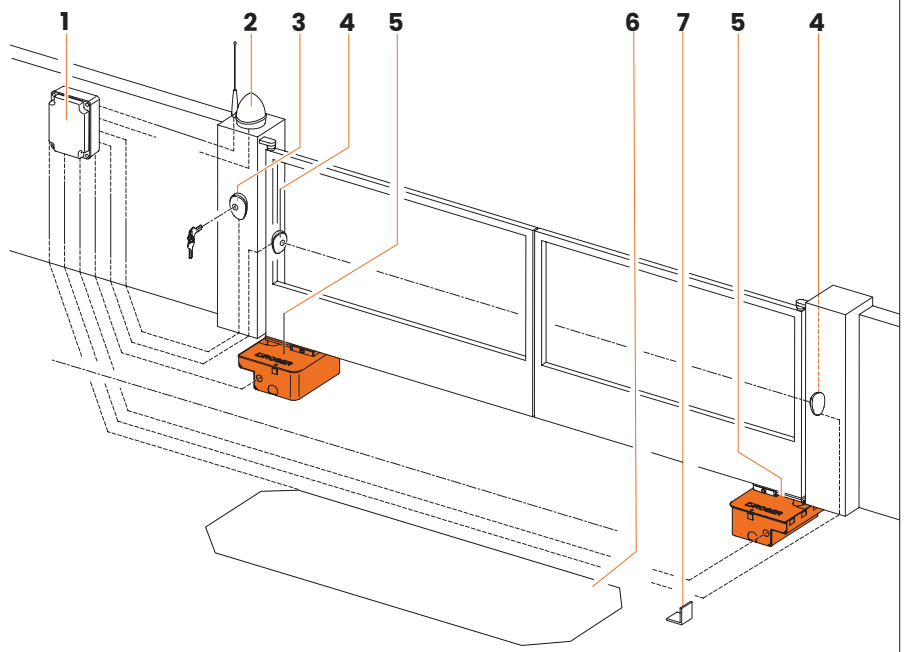


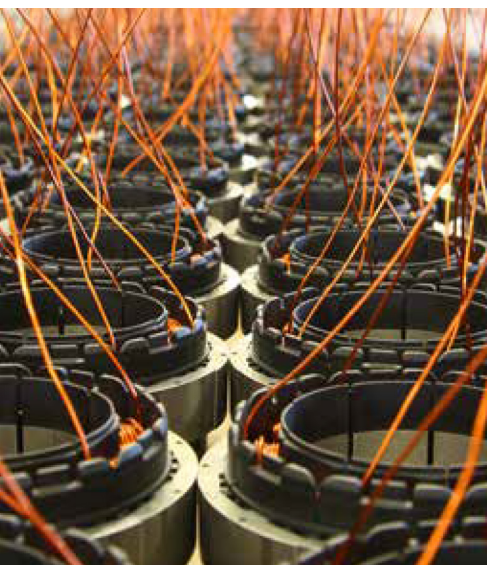
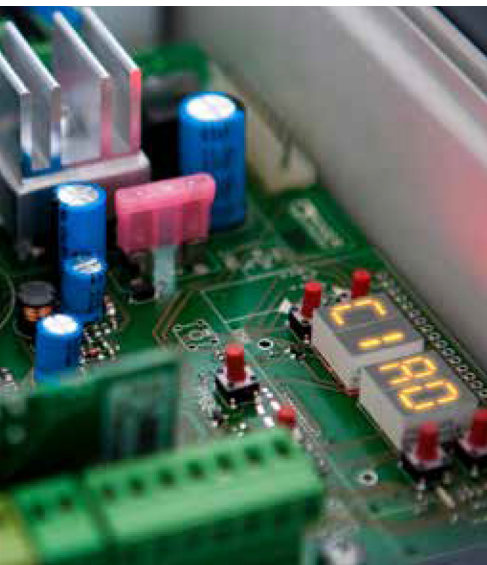
BR21 automatic system can be mounted either on the right or left

1. Excavate the foundation pit.
2. The housing pin must be aligned with the hinge of the gate.
3. Fit the water drain, to avoid water stagnation inside the base housing.
NB: Improper water drainage may damage the gearmotor.
4. Fit an adequate conduit for the electric cables.
5. Embed the base housing in concrete, perfectly levelled.
6. The upper edge of the housing must be 5-6 mm above the ground level so water runs off it.
7. It is important to observe the installation heights between the base housing and the column and the correct levelling.

Typical Swing Gate Set Up

1. Control Box
2. Antenna/Fashing Light
3. Keypad/Exit Button
4. Safety Beam
5. Motor
6. Loop Detector/Probe
7. Gate Stop





- ◆ **Brushless Digital Motor**
Features a compact design with neodymium iron-baron magnets, available in 24V & 36V AC versions, operating at ambient temperature with low consumption.
- ◆ **Speed & Acceleration With Maximum Safety**
Controls motor torque precisely for smooth acceleration and deceleration, ensuring safety.
- ◆ **Super Intensive Use**
Operates at low voltage with a 100% duty cycle, maintaining low energy consumption.
- ◆ **External Transformer For Heavy Gates**
Low voltage options reduce installation costs where high voltage is unavailable.
- ◆ **Extremely Low Energy Consumption**
Consumes about 1/3 the power of other brands for the same gate weight and speed.
- ◆ **Amazingly Quiet**
Precision gearing and smooth torque control result in very quiet operation, ideal for residential applications.
- ◆ **Mechanical Stops**
Internal lever with adjustable stops.
- ◆ **Standby Batteries**
Emergency battery backup system available, with optional 'fail open' setting during power outages.
- ◆ **Multifunctional Digital Display**
4-quadrant display with 6 function keys for parameter adjustment, error checking, and self-learning.
- ◆ **High Precision Engineering**
Features premium materials and double shielded ball bearings for precise alignment and durability.
- ◆ **Reinforced Aluminum Body**
Aluminum housing reinforced with titanium and epoxy-painted for weather protection.
- ◆ **Sustainability**
Roger Technology is a green customer-centric company dedicated to creating sustainable products through environmentally responsible production processes, innovative technologies, and a culture that prioritizes the health, safety, and development of its workers and customers.