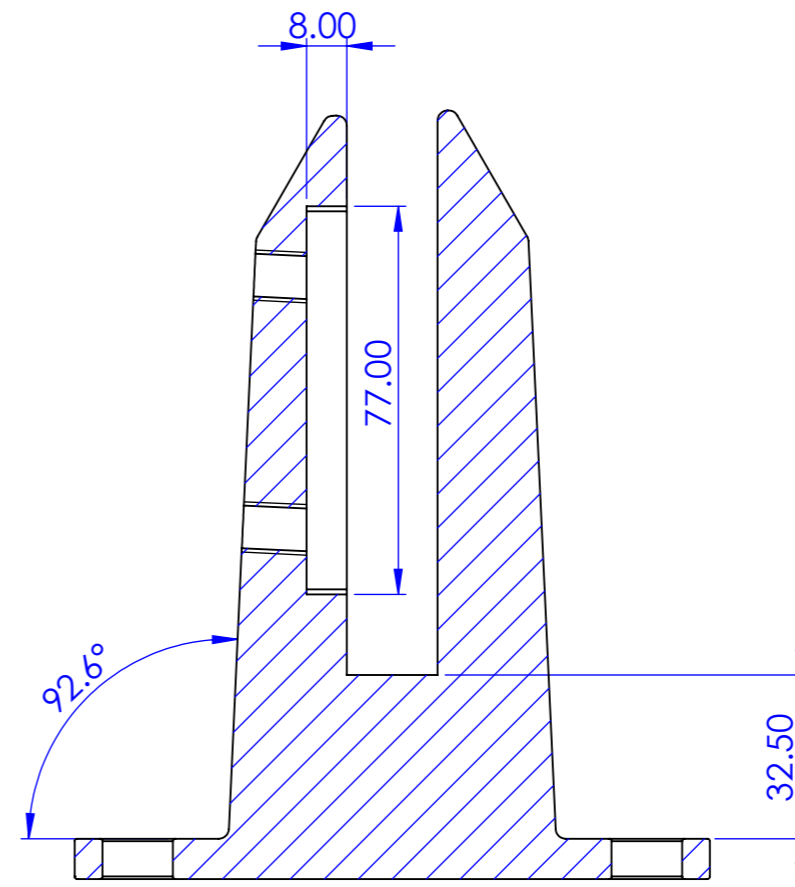
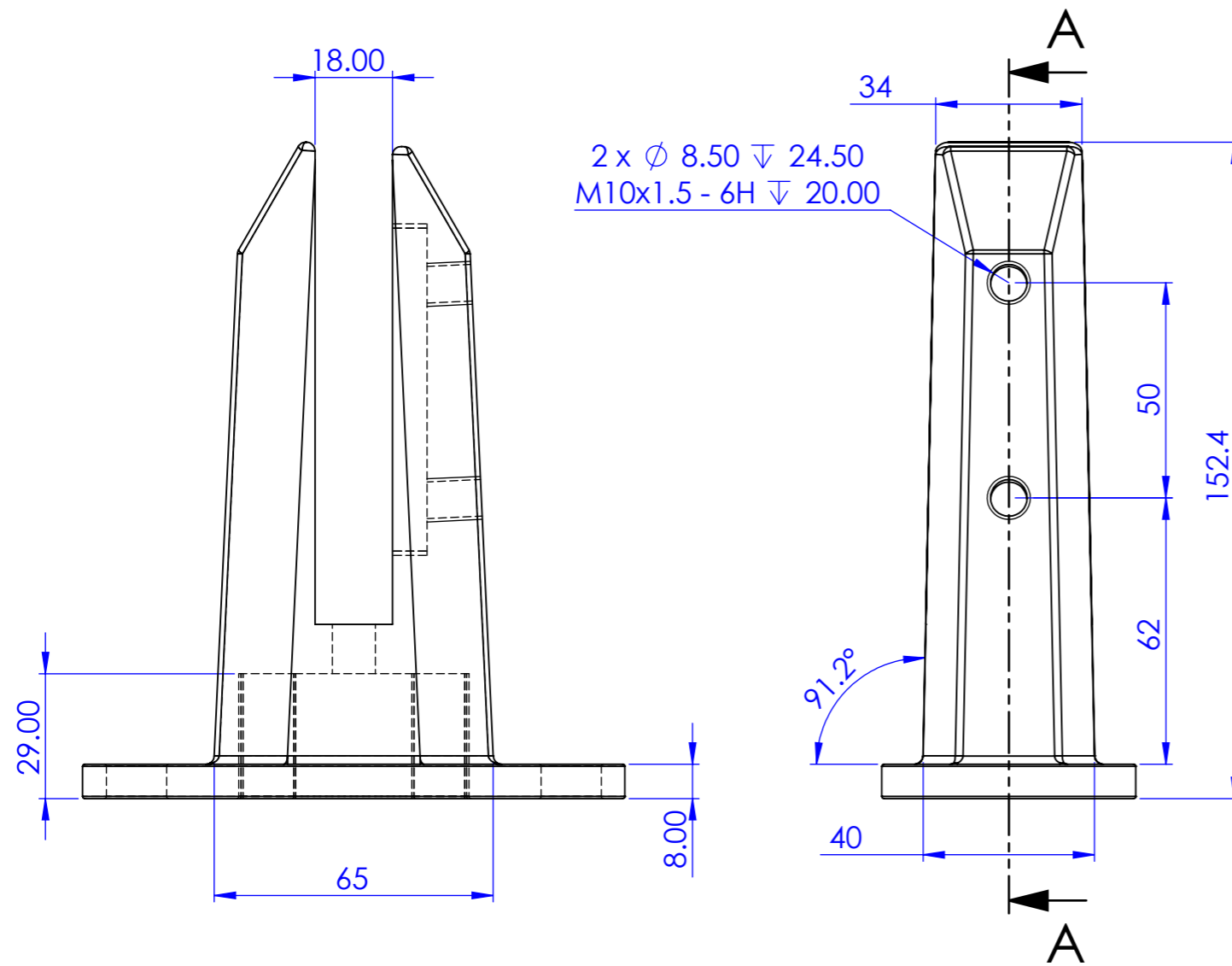


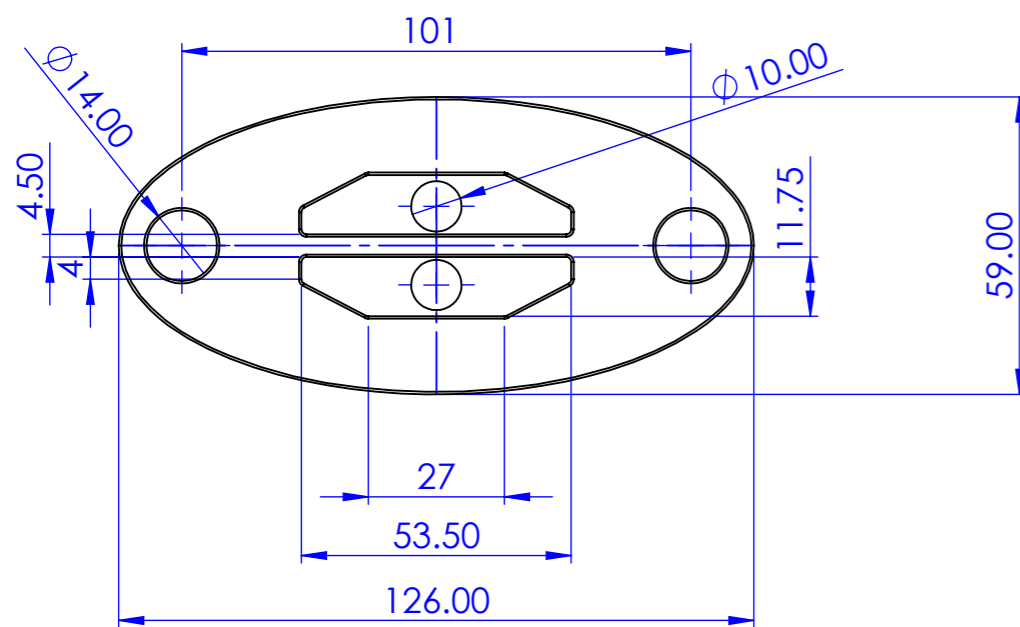
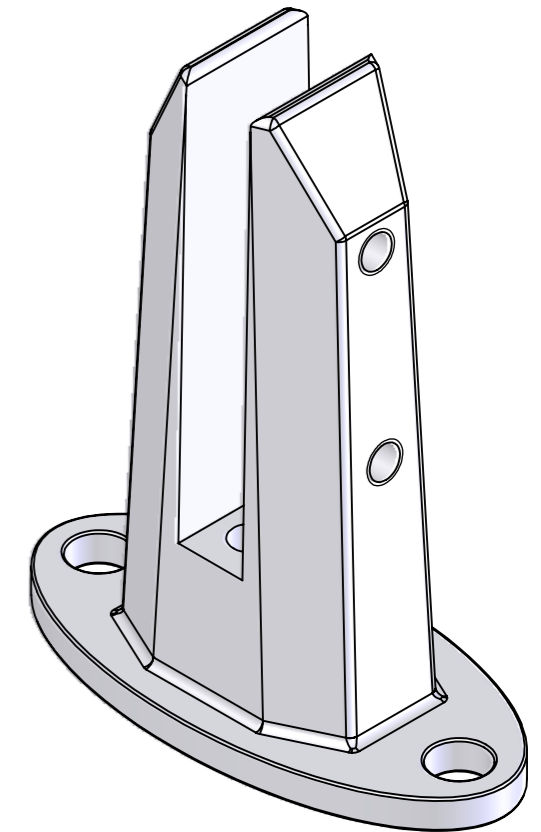
Bill of Materials (BOM)			
Item	Title	Material	Qty.
1	MILFORD SPIGOT	2205 SS	1
2	MILFORD INSERT	ABS	1
3	MILFORD LOAD PLATE	AISI 304	1
4	M 10x12 Grub Screw	EDST	2
5	MILFORD BASE COVER	2205 SS	1



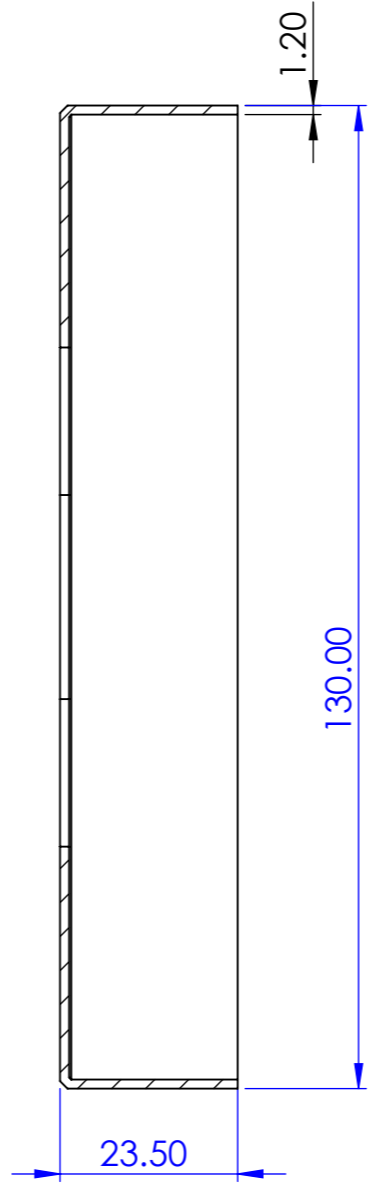
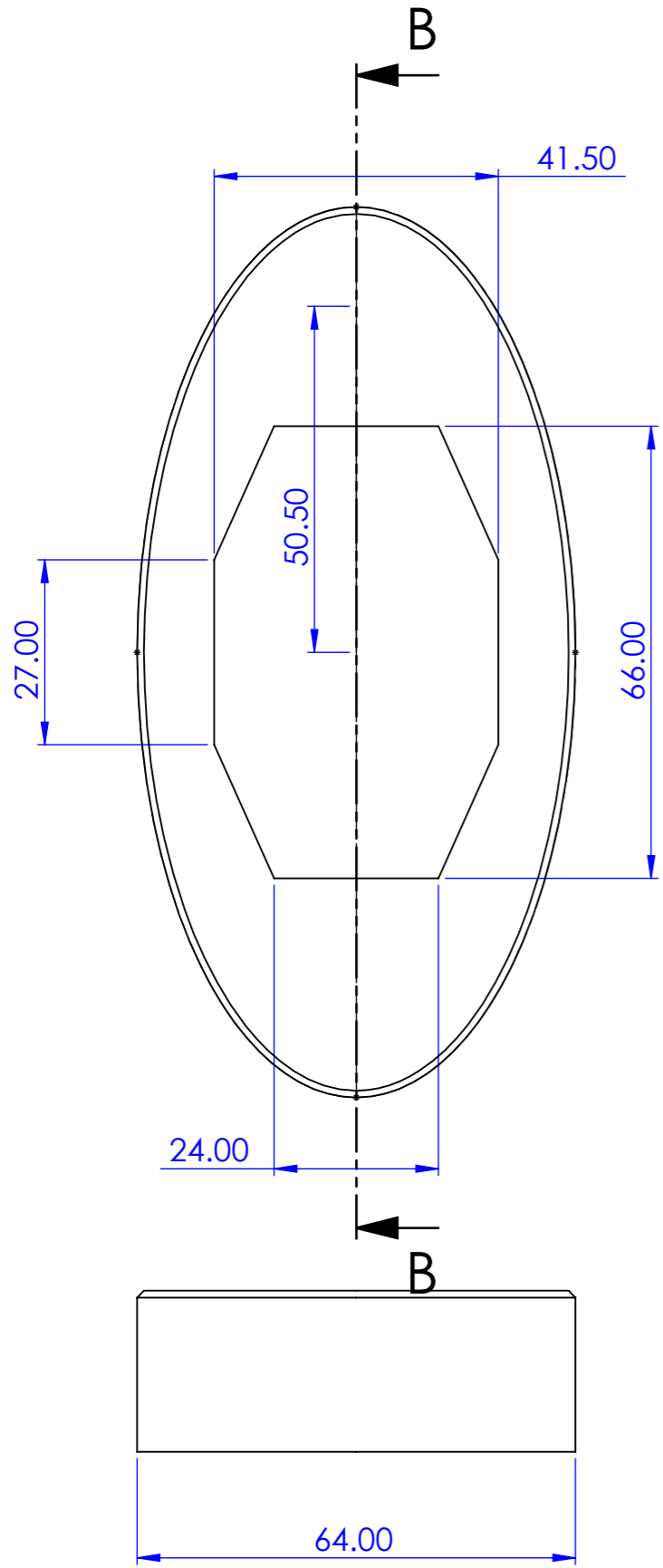
TOLERANCES 0 ±0.5mm 0.0 ±0.1mm 0.00 ±0.02mm ANGLE ±0.5° UNLESS OTHERWISE STATED	THE INFORMATION CONTAINED IN THIS DRAWING IS PROPRIETARY TO STORETECH AND SHALL NOT BE REPRODUCED OR DISCLOSED IN WHOLE OR IN PART OR USED FOR ANY DESIGN OR MANUFACTURE EXCEPT WHEN SUCH USER POSSESSES DIRECT WRITTEN AUTHORIZATION FROM STORETECH LTD.	DRAWN BY: MvB	DATE: 16/01/2021	NOTES: Note1 Note2 Note3 Note4 Note5 Note6	MATERIAL: as per constituents	PHASE:	DESCRIPTION: MILFORD ASSY			
		CHECKED BY:	3RD ANGLE PROJECTION		FINISH: POLISHED EXT FACES	PROCESS:				
		DIMENSIONS ARE MILLIMETERS UNLESS OTHERWISE STATED. DO NOT SCALE DRAWING.					TYPE:	SCALE: 1:1	SHEET: A3	SHEET: 1 OF 3



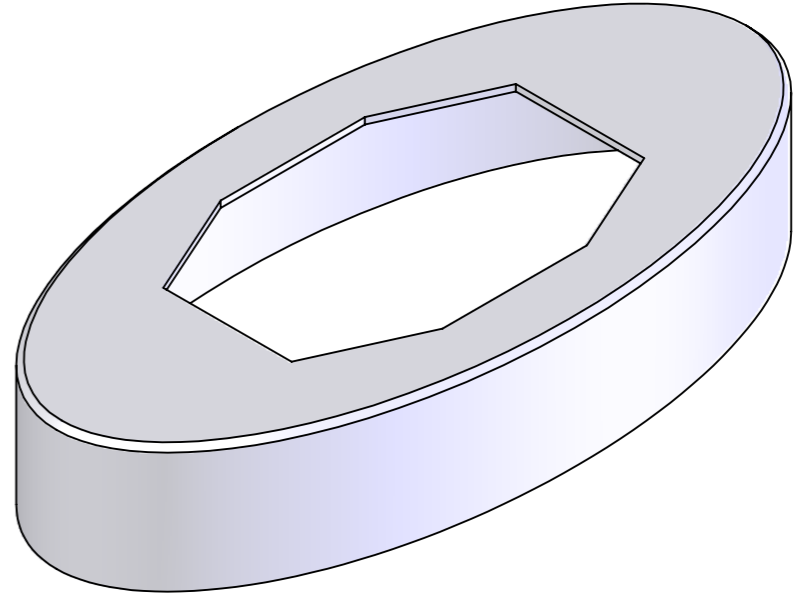
SECTION A-A



TOLERANCES O ±0.5mm 0.0 ±0.1mm 0.00 ±0.02mm ANGLE ±0.5° UNLESS OTHERWISE STATED	THE INFORMATION CONTAINED IN THIS DRAWING IS PROPRIETARY TO STORETECH AND SHALL NOT BE REPRODUCED OR DISCLOSED IN WHOLE OR IN PART OR USED FOR ANY DESIGN OR MANUFACTURE EXCEPT WHEN SUCH USER POSSESSES DIRECT WRITTEN AUTHORIZATION FROM STORETECH LTD.	DRAWN BY: MvB	DATE: 16/01/2021	NOTES: Note1 Note2 Note3 Note4 Note5 Note6	MATERIAL: as per constituents	PHASE:	DESCRIPTION: MILFORD SPIGOT SCALE: 1:1.5 SHEET: A3 SHEET: 2 OF 3 PART NUMBER: REVISION:			
		CHECKED BY: 3RD ANGLE PROJECTION			FINISH: POLISH EXT FACES	PROCESS:				
DIMENSIONS ARE MILLIMETERS UNLESS OTHERWISE STATED. DO NOT SCALE DRAWING.					TYPE:					



SECTION B-B



TOLERANCES 0 ±0.5mm 0.0 ±0.1mm 0.00 ±0.02mm ANGLE ±0.5° UNLESS OTHERWISE STATED	THE INFORMATION CONTAINED IN THIS DRAWING IS PROPRIETARY TO STORETECH AND SHALL NOT BE REPRODUCED OR DISCLOSED IN WHOLE OR IN PART OR USED FOR ANY DESIGN OR MANUFACTURE EXCEPT WHEN SUCH USER POSSESSES DIRECT WRITTEN AUTHORIZATION FROM STORETECH LTD.	DRAWN BY: MvB	DATE: 16/01/2021	NOTES: Note1 Note2 Note3 Note4 Note5 Note6	MATERIAL: as per constituents	PHASE:	DESCRIPTION: MILFORD BASE			
		CHECKED BY:	3RD ANGLE PROJECTION		FINISH: POLISHED	PROCESS:				