



AORAKI

BelAire[®]
DESIGNER FENCING

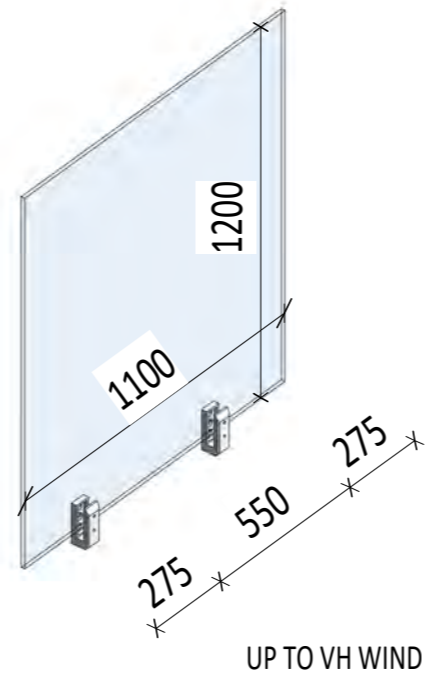
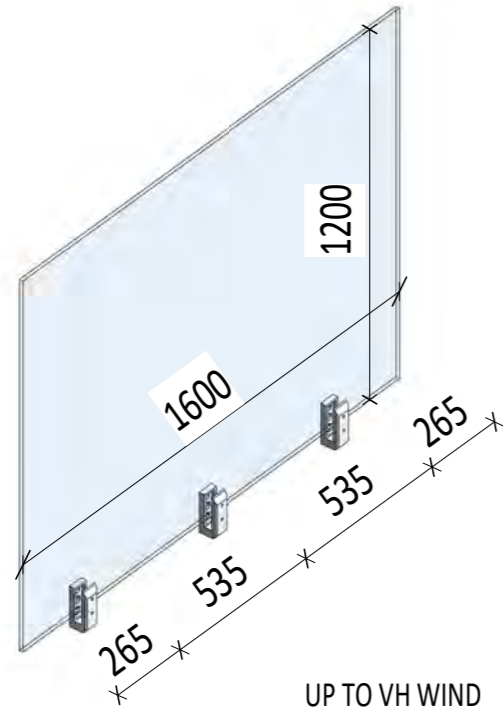
Wind and Fixing Specifications

...make it your own!

Max Panel Sizes for VH Wind Zones Balustrade										
	Spigot Qty	1000mm high Glass	1200mm High Glass	1350mm High Glass	Occupancy	Fixing Wet Timber	Fixing Dry Timber	Concrete	Edge distance Timber	Edge Distance Concrete
Aoraki Balustrade	2	1100W (1600W 3 Spigots)	(1400W 3 Spigots)	Engineers Approval	A,B,E,C3	M12 x 150mm Lag Screw	M12 x 150mm Lag Screw	M12 x 115 Threaded rod and chemset	50	65
Aoraki Pool Fencing	2	N/A	1100W (1600W 3 Spigots)	Engineers Approval		M12 x 150mm Lag Screw	M12 x 150mm Lag Screw	M12 x 115 Threaded rod and chemset	50	65

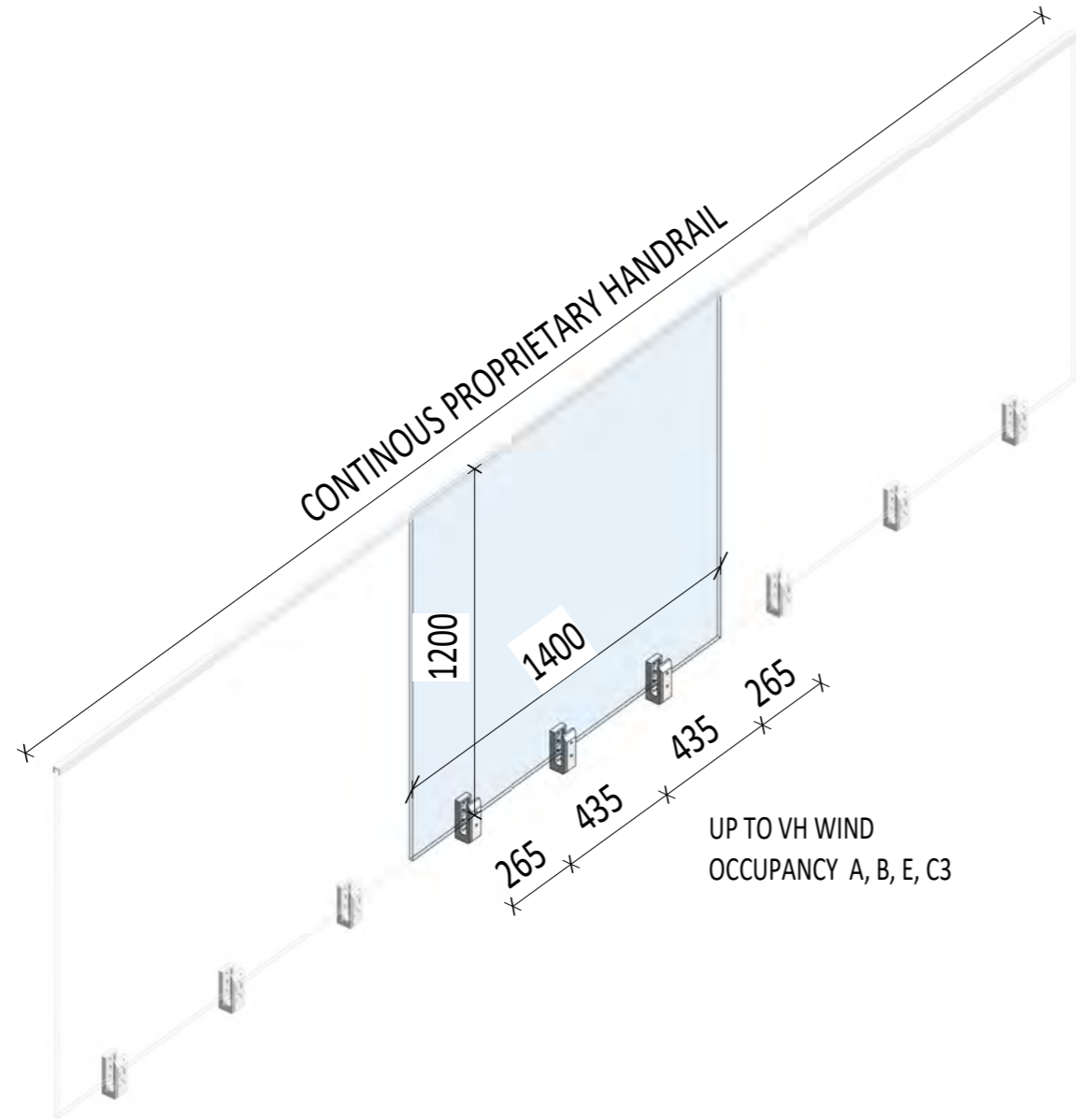
Max Panel Sizes for EH Wind Zones Balustrade										
	Spigot Qty	1000mm high Glass	1200mm High Glass	1350mm High Glass	Occupancy	Fixing Wet Timber	Fixing Dry Timber	Concrete	Edge distance Timber	Edge Distance Concrete
Aoraki Balustrade	2	N/A	N/A	N/A	A,B,E,C3	M12 x 150mm Lag Screw	M12 x 150mm Lag Screw	M12 x 115 Threaded rod and chemset	50	65
Aoraki Pool Fencing	2	N/A	N/A	N/A		M12 x 150mm Lag Screw	M12 x 150mm Lag Screw	M12 x 115 Threaded rod and chemset	50	65

BelAire Aoraki Pool Fence Wind Zones



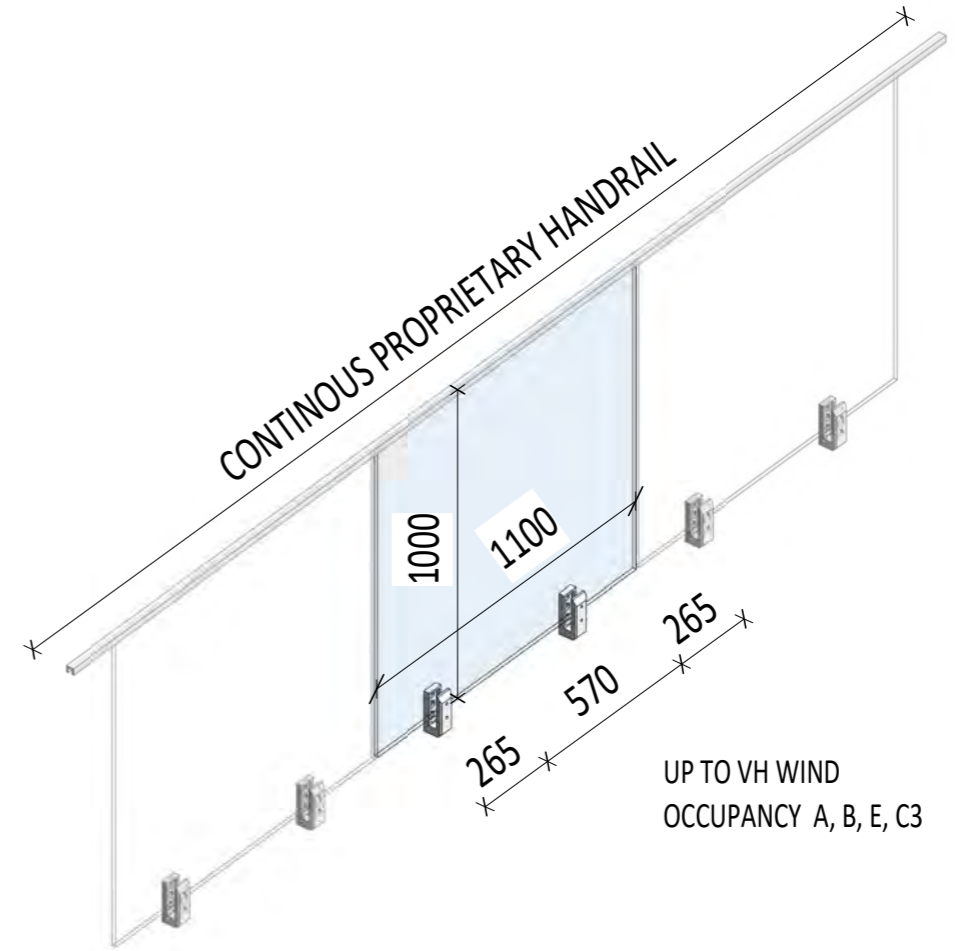
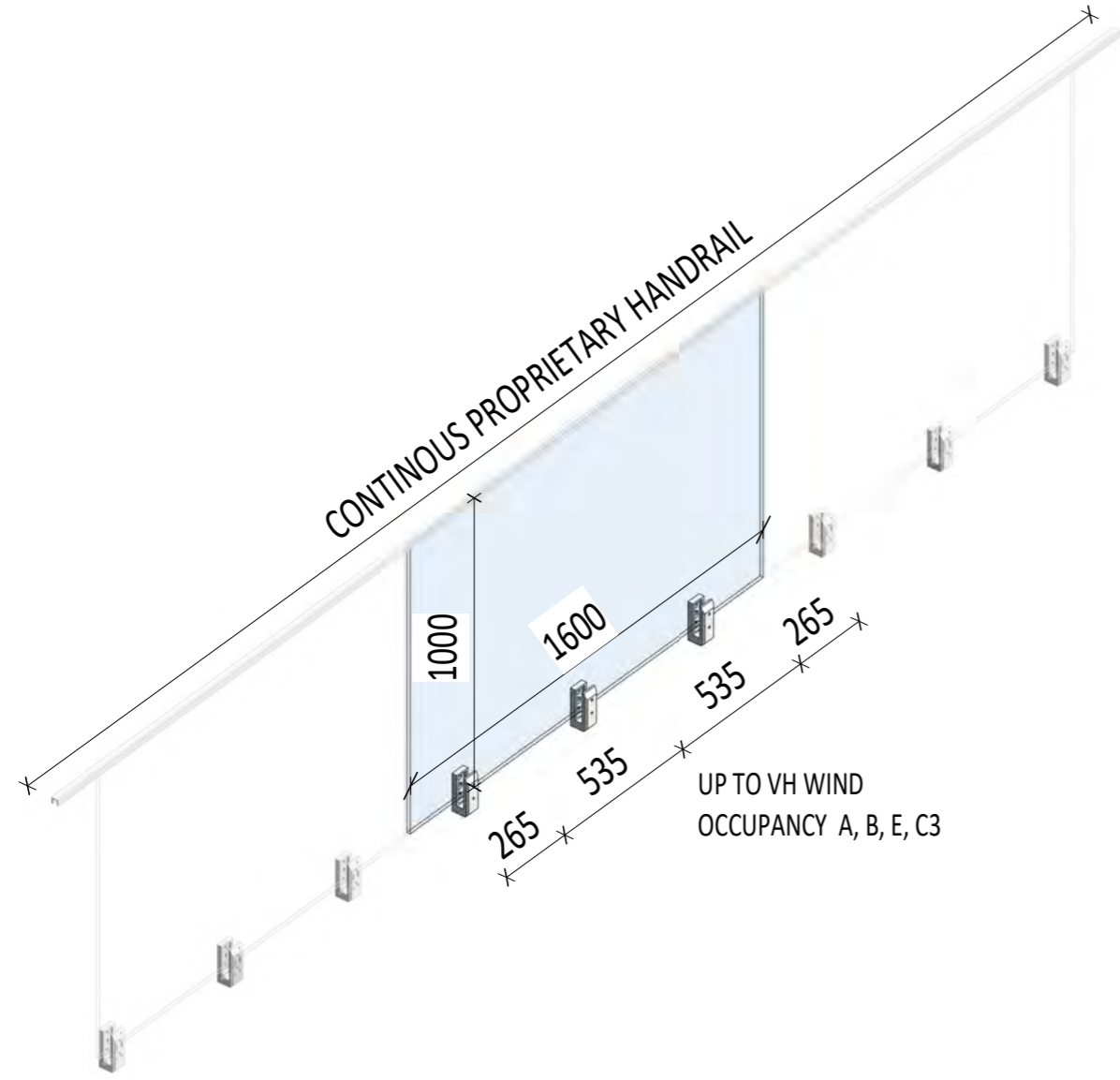
REF.	DESCRIPTION	DATE
R.0	INFORMATION	220525
R.1	FIXING ADDED	220919
R.2	CONCRETE FIXING REVISED	221102
scale: @A3	drawn: AM	checked: PM
	status: P	project no: 20073
	drg no: AF01	rev: R.2

BelAire Aoraki Balustrade Wind Zones

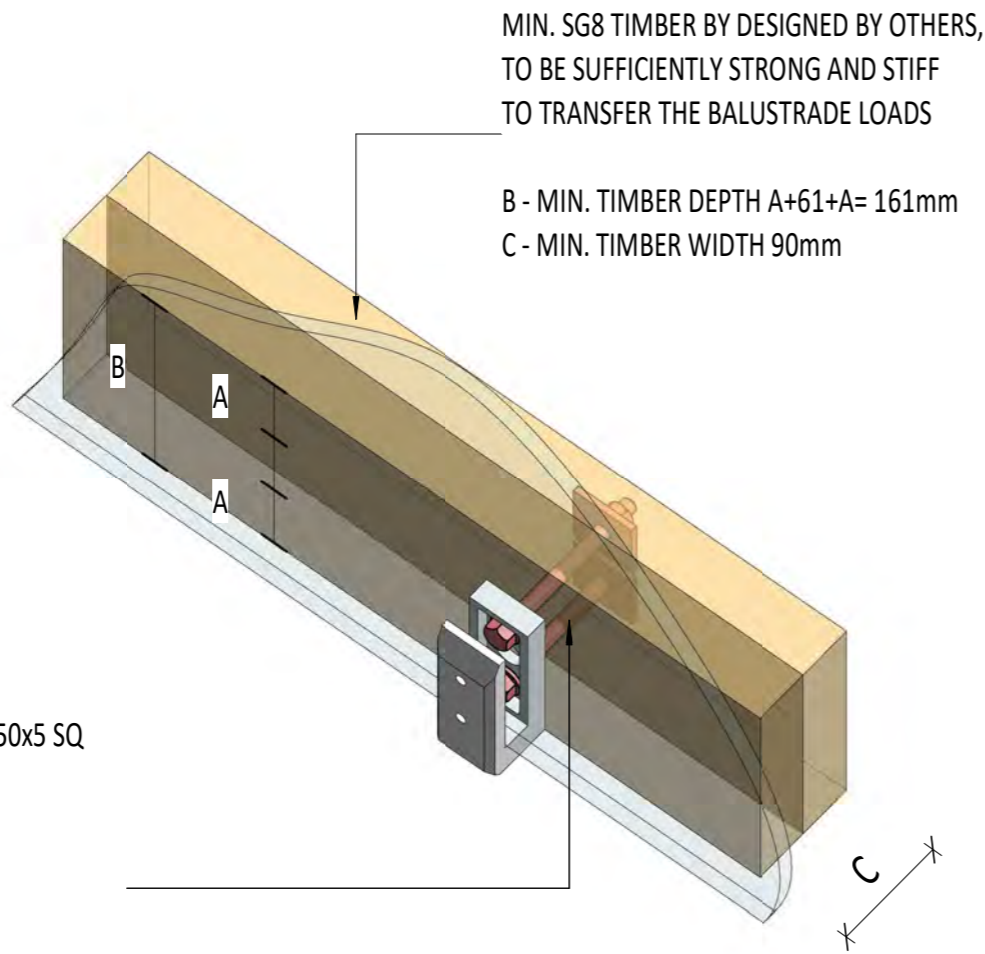


REF.	DESCRIPTION	DATE
R.0	INFORMATION	220525
R.1	FIXING ADDED	220919
R.2	CONCRETE FIXING REVISED	221102
scale: @A3	drawn: AM	checked: PM
	status: P	project no: 20073
	drg no: AB01	rev: R.2

BelAire Aoraki Balustrade Wind Zones



REF.	DESCRIPTION	DATE
R.0	INFORMATION	220525
R.1	FIXING ADDED	220919
R.2	CONCRETE FIXING REVISED	221102
scale: @A3	drawn: AM	checked: PM
	status: P	project no: 20073
	drg no: AB02	rev: R.2



MIN. SG8 TIMBER BY DESIGNED BY OTHERS,
TO BE SUFFICIENTLY STRONG AND STIFF
TO TRANSFER THE BALUSTRADE LOADS

B - MIN. TIMBER DEPTH $A+61+A= 161\text{mm}$
C - MIN. TIMBER WIDTH 90mm

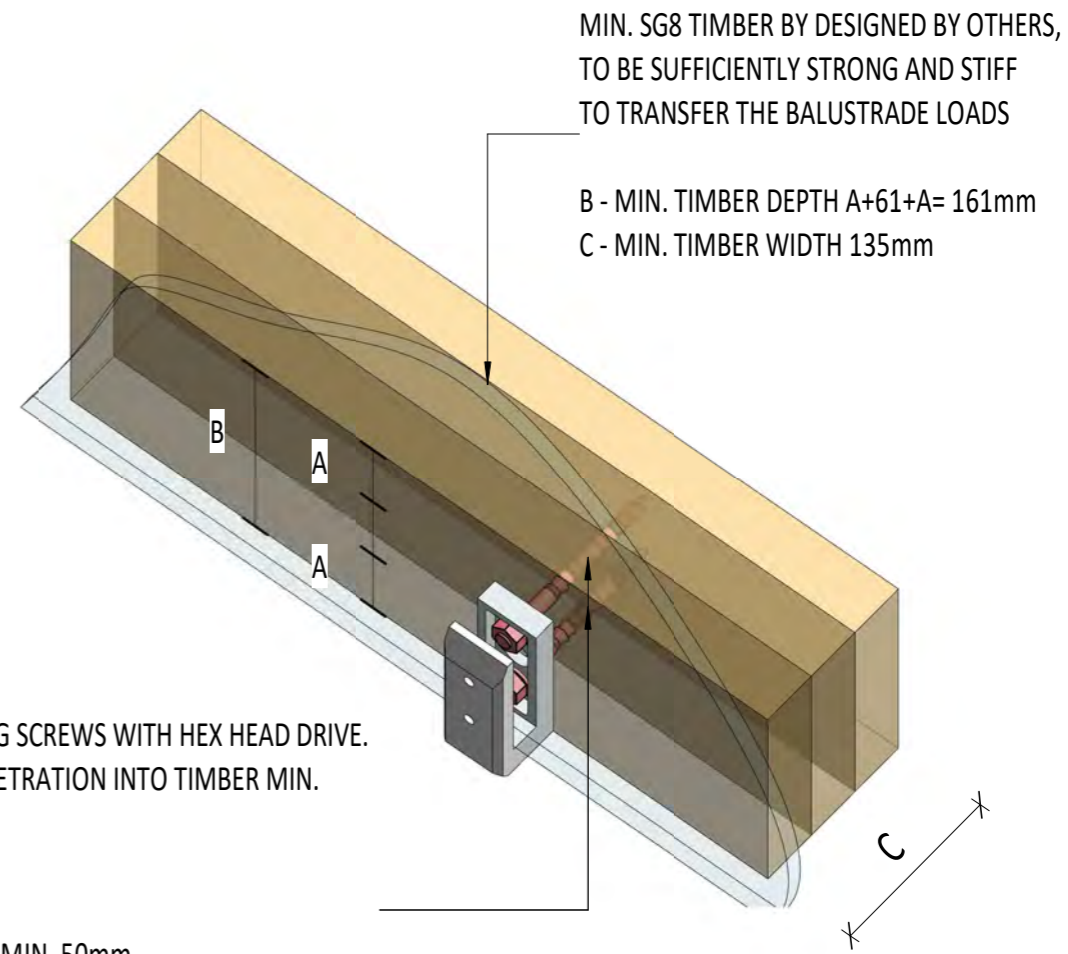
2/ M12 316(A4) THREADED ROD WITH 50x5 SQ
316(A4) WASHERS FROM TIMBER SIDE.

A - MIN. EDGE DISTANCE MIN. 50mm

SEPARATION BETWEEN BOLT HEAD AND GLASS
TO BE MAINTAINED.

STORETECH SKU - SCETHR12

OPTION 1



MIN. SG8 TIMBER BY DESIGNED BY OTHERS,
TO BE SUFFICIENTLY STRONG AND STIFF
TO TRANSFER THE BALUSTRADE LOADS

B - MIN. TIMBER DEPTH $A+61+A= 161\text{mm}$
C - MIN. TIMBER WIDTH 135mm

2/ M12 x 150 316(A4) LAG SCREWS WITH HEX HEAD DRIVE.
LENGTH OF THREAD PENETRATION INTO TIMBER MIN.
100mm

A - MIN. EDGE DISTANCE MIN. 50mm

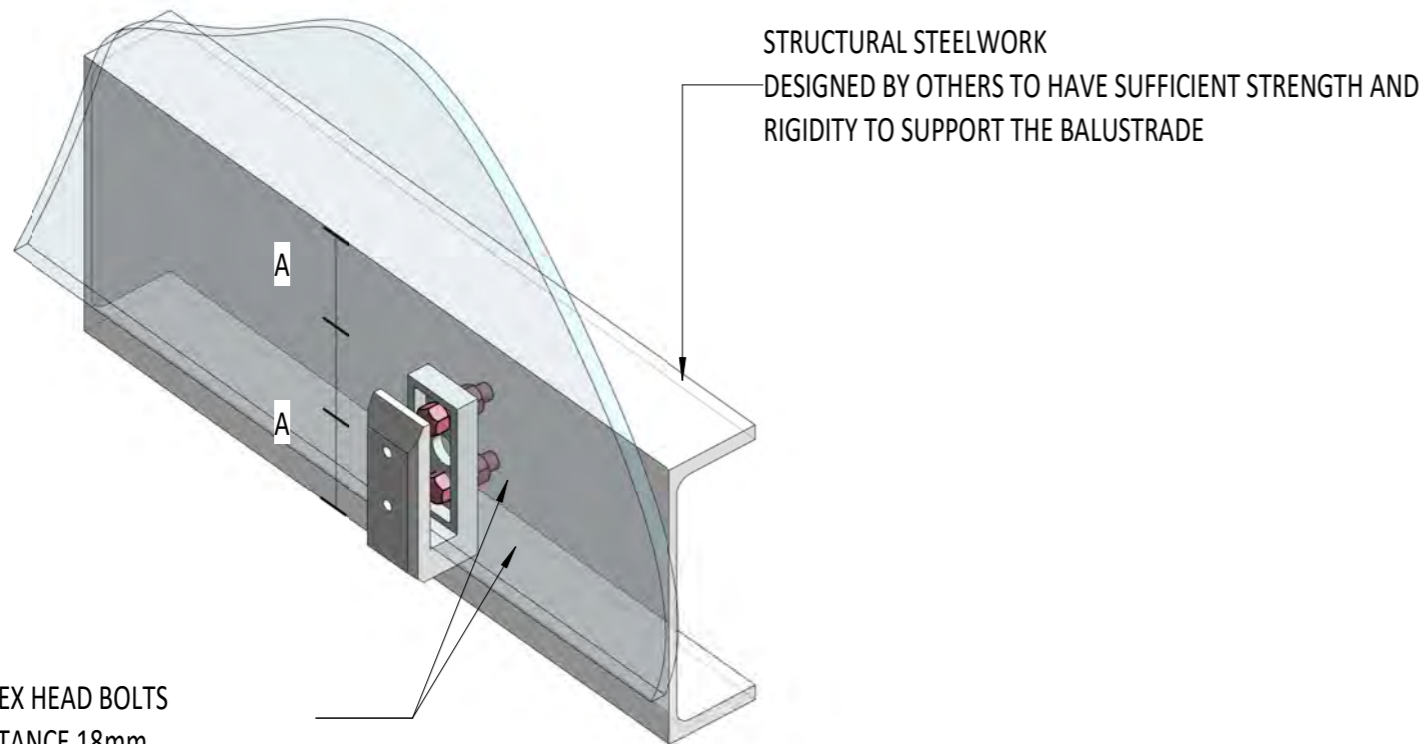
SEPARATION BETWEEN BOLT HEAD AND GLASS TO BE
MAINTAINED.

STORETECH SKU SCELAG150

OPTION 2

CONNECTION TO TIMBER

REF.	DESCRIPTION	DATE
R.0	INFORMATION	220525
R.1	FIXING ADDED	220919
R.2	CONCRETE FIXING REVISED	221102
scale: @A3	drawn: AM	checked: PM
	status: P	project no: 20073
	drg no: AF03	rev: R.2



2/M12 316(A4) HEX HEAD BOLTS
A - MIN. EDGE DISTANCE 18mm

SEPARATION BETWEEN BOLT HEAD AND GLASS TO BE MAINTAINED.

CONNECTION TO STRUCTURAL STEEL

MECHANICAL ANCHORS:

2/HSA-R M12 x 115 (A4) STAINLESS STEEL BY HILTI,
MIN.80mm INTO CONCRETE

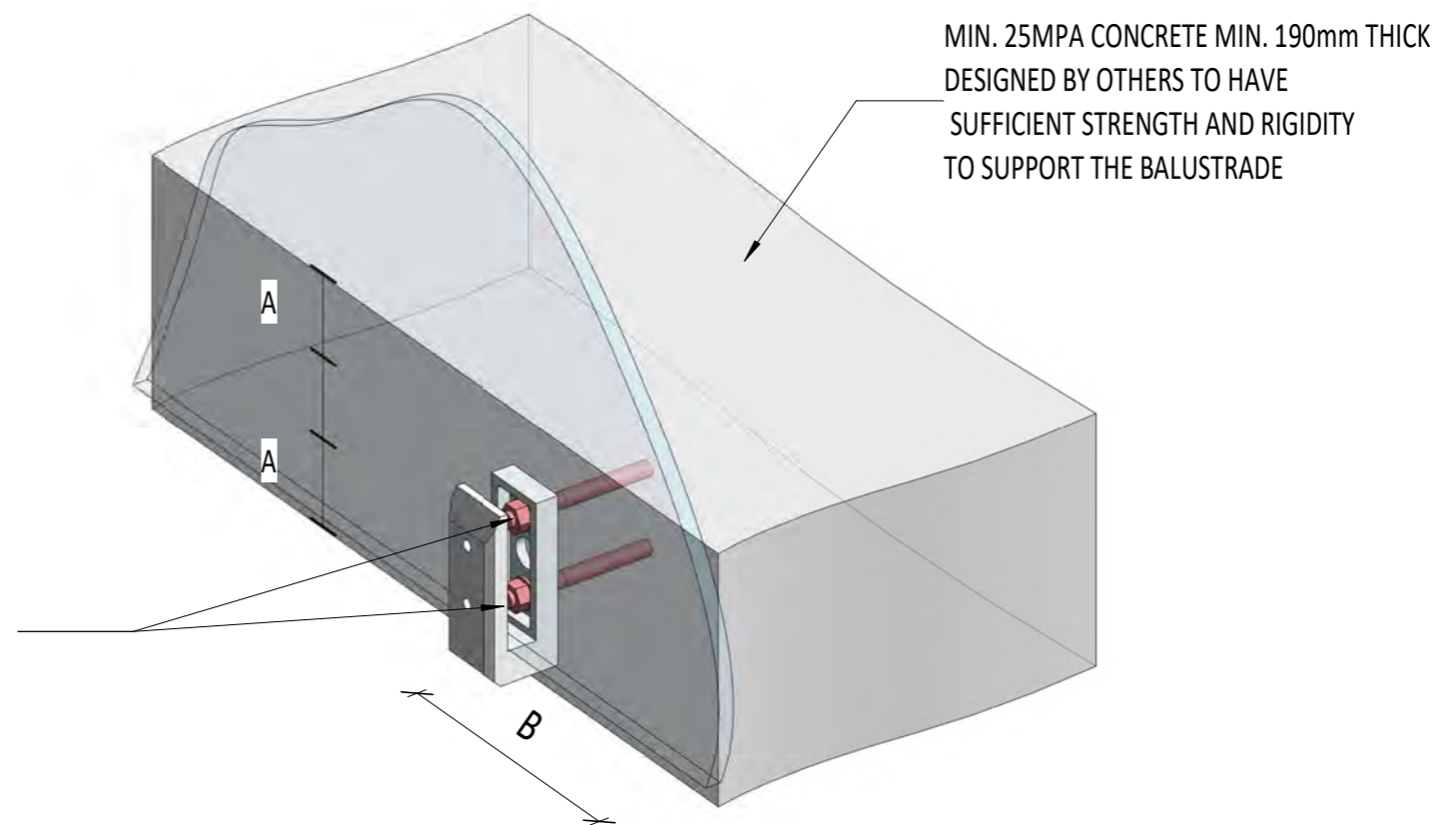
CHEMICAL ANCHORS:

HIT-HY 170 INJECTION MORTAR + 2/HAS-U M12 x 110 TREADED RODS (A4) STAINLESS STEEL BY HILTI,
MIN.70mm INTO CONCRETE (SCETHR12 & SCECHEM)

OR
B+BTec BIS-HY GEN2 INJECTION MORTAR + 2/M12 TREADED RODS 316/A4-70 STAINLESS STEEL BY ICCONS,
MIN.90mm INTO CONCRETE

ROD TO BE FULLY EMBEDDED INTO NUT. SEPARATION BETWEEN END OF ROD AND TREADED ROD/NUT AND GLASS TO BE MAINTAINED.

A - EDGE DISTANCE MIN. 65mm,
B - CORNER DISTANCE MIN. 265mm



CONNECTION TO CONCRETE

IMPORTANT INSTALLATION INSTRUCTIONS:

ALL PROPRIETARY PRODUCTS INCLUDING ANCHORS MUST BE INSTALLED IN STRICT ORDER WITH MANUFACTURER PROCEDURES.



7 Market Street
Napier. 4110
m. 0210398833, m.0211099712
www.extra-mile.co.nz, info@extra-mile.co.nz

Client:
STORETECH LIMITED

Project:
AORAKI FIXING SPIGOT

Drawing:
POOL FENCE CONNECTION DETAIL
SHEET 2

REF.	DESCRIPTION	DATE
R.0	INFORMATION	220525
R.1	FIXING ADDED	220919
R.2	CONCRETE FIXING REVISED	221102
scale: @A3	drawn: AM	checked: PM
	status: P	project no: 20073
	drg no: AF03	rev: R.2