



GLASS HARDWARE



INSTALLATION GUIDE

SL120B Top Fixed

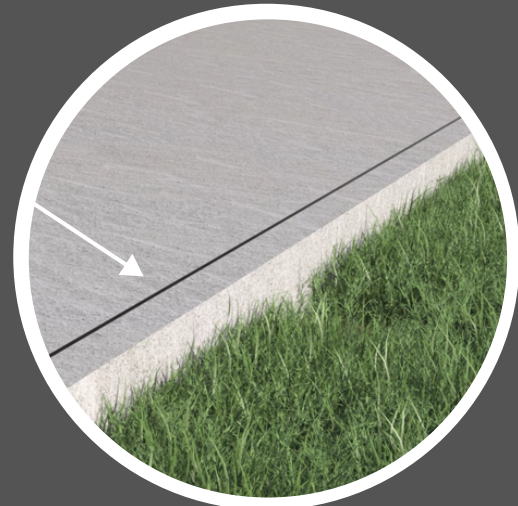
In this short brochure we break down the complete installation process of the Smart-Lock adjustable top fixed channel system



INSTALLATION PROCESS

1.

Mark Centre position of the channel and chalk a line



2.

Place channel over the chalked line and mark all the holes



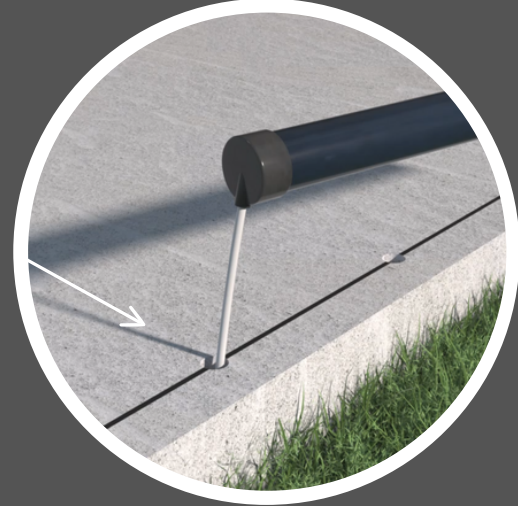
3.

Remove the channel and drill required hole size depending on fixing application



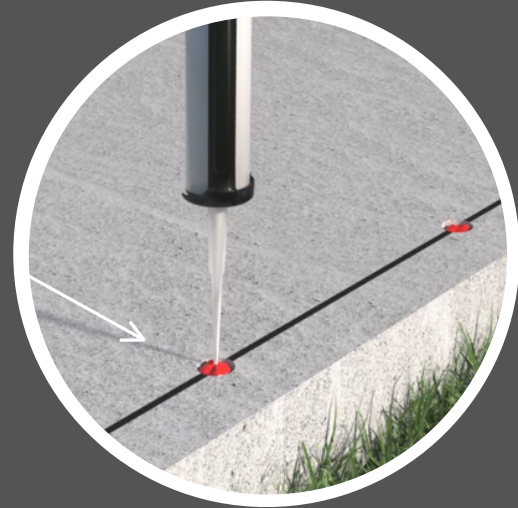
4.

Blow all the dust out of the holes to ensure they are clean



INSTALLATION PROCESS

- 5.**
Fill the holes with chemical anchor



- 6.**
Set rods into the concrete leaving 15mm protruding out the top of the slab



- 7.**
Place the channel over the top of the threaded rods



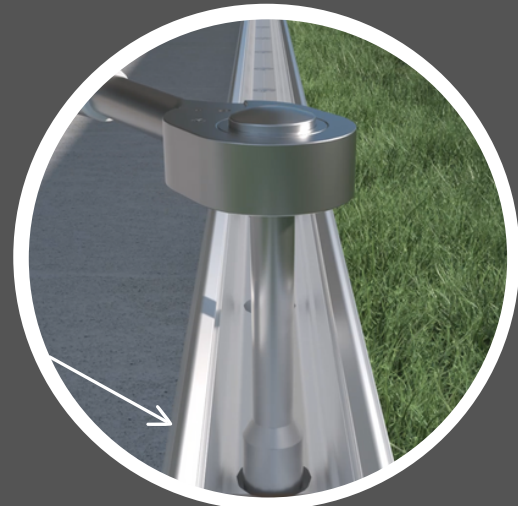
- 8.**
install the nuts and washers onto all of the threaded rods



INSTALLATION PROCESS

9.

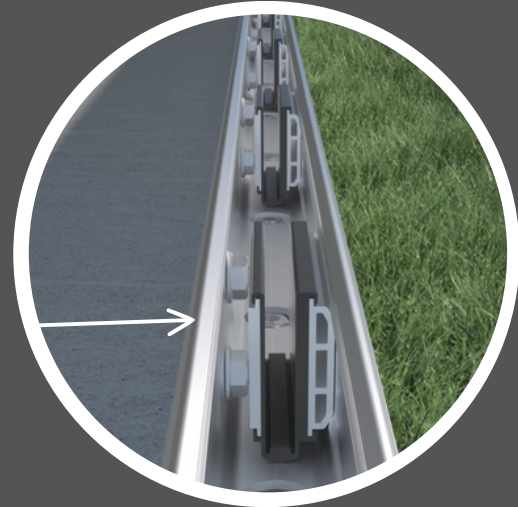
Secure all the nuts using a socket wrench



10.

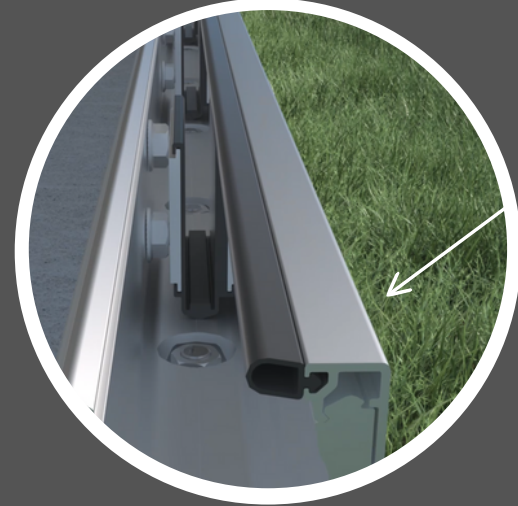
Place all the clamping plates into the channel

NOTE: The number of clamping plates used per panel will determine on the engineering



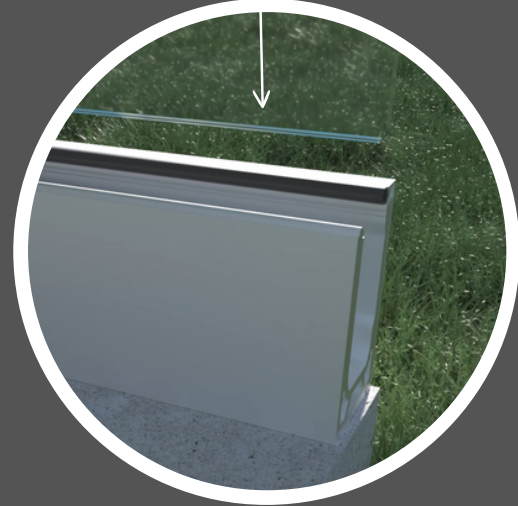
11.

Install the outside cover with pre-glazed rubbers



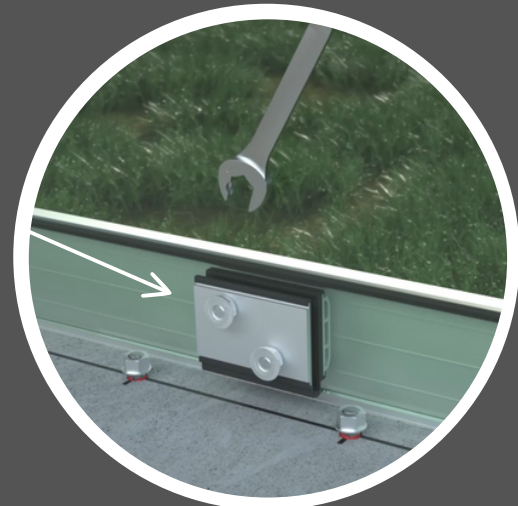
12.

Install glass panels into the channel and divide the glass gaps evenly

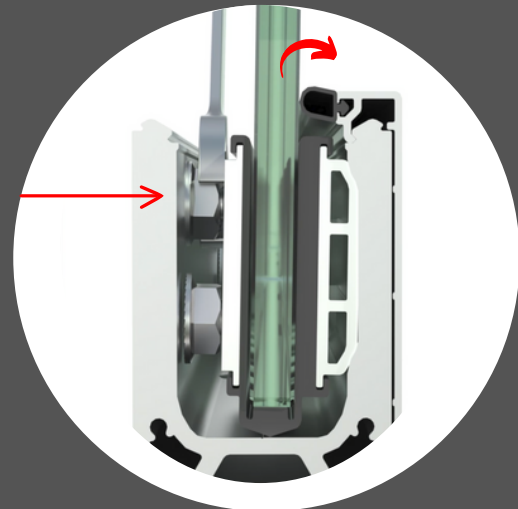


INSTALLATION PROCESS

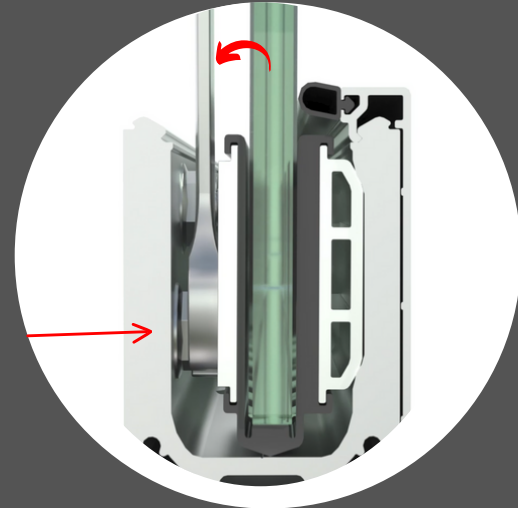
- 13.** Using the ratchet spanner or a standard 19mm spanner wind the nuts out until they touch the side of the channel



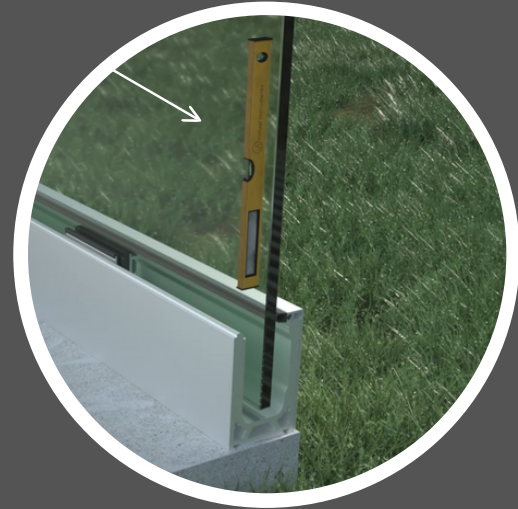
- 14.** Wind out the top nut to tilt the glass forward



- 15.** Wind out the bottom nut to tilt the glass back.

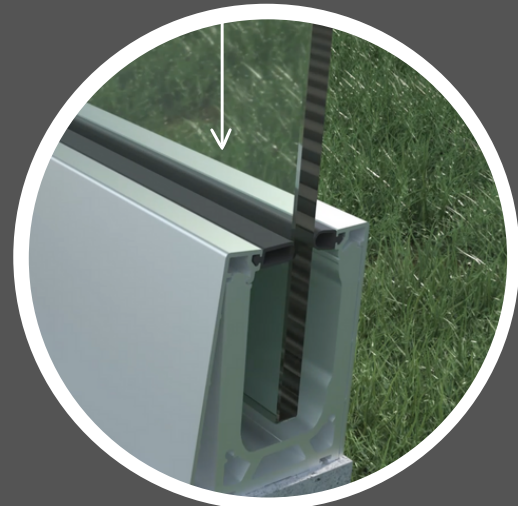


- 16.** Using a level check the glass is plumb and make any small adjustments if needed

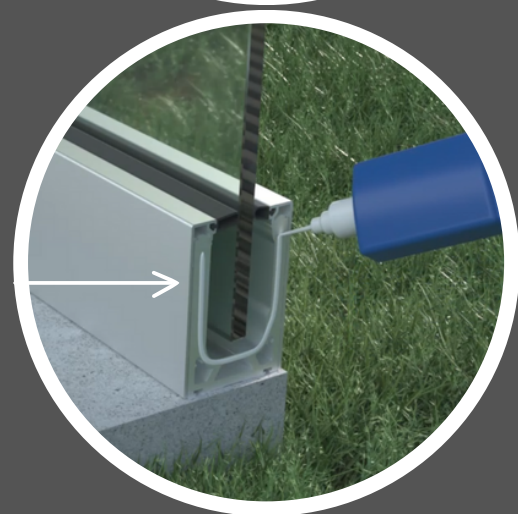


INSTALLATION PROCESS

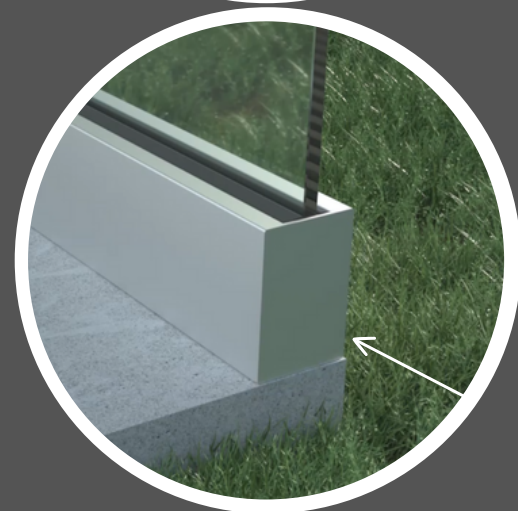
- 17.**
Install front cover with pre-glazed rubbers.
Push cover down with some force until the
cover snaps on



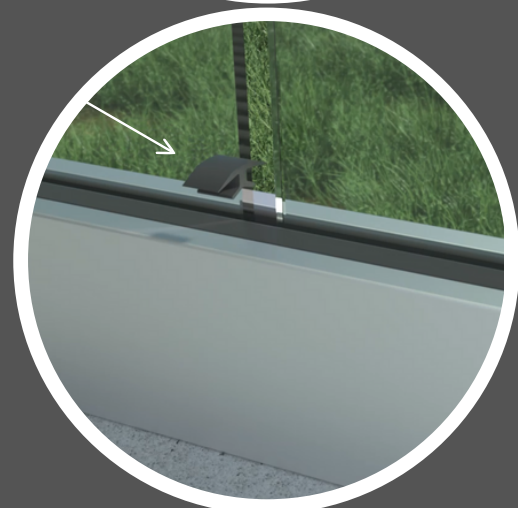
- 18.**
Using silicone or glue place a small bead
around the end of the channel



- 19.**
Push end cap onto the the channel



- 20.**
Cut the gap rubber to match gap sizes on
your project and install them in between
the rubber on the covers



Finished Product



SUMMARY

The main key benefits of using our Smart-Lock channel system is it allows you to get a perfect level job every time with very minimal effort

For more information or the complete installation video guide please get in contact with us today.