

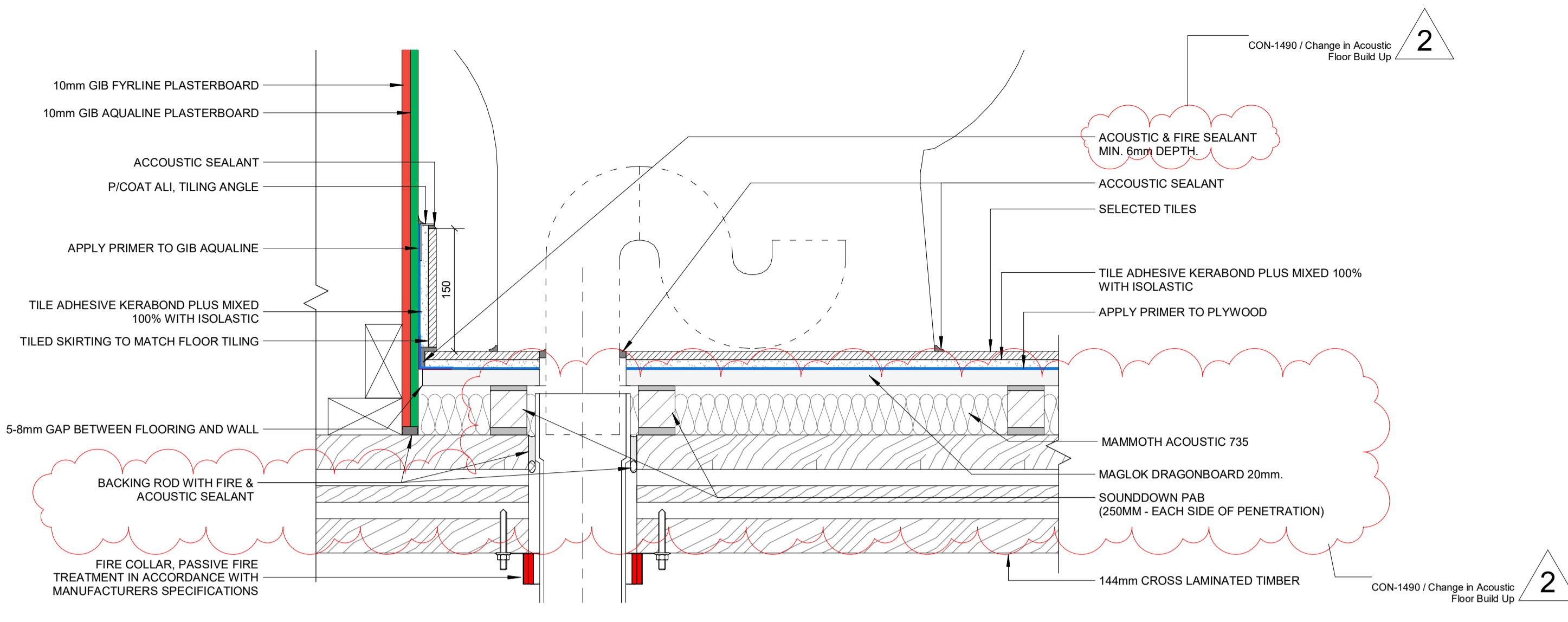
GENERAL NOTES

1. ALL REFERENCE TO NEW ZEALAND CODES OR STANDARDS SHALL BE TAKEN TO MEAN THE LATEST VERSION.
2. ANY DISCREPANCIES MUST BE BROUGHT TO THE DESIGNERS ATTENTION.
3. DO NOT DIMENSION DIRECTLY OFF THE DRAWINGS AS SCALE MAY BE OFF DUE TO PRINTING.

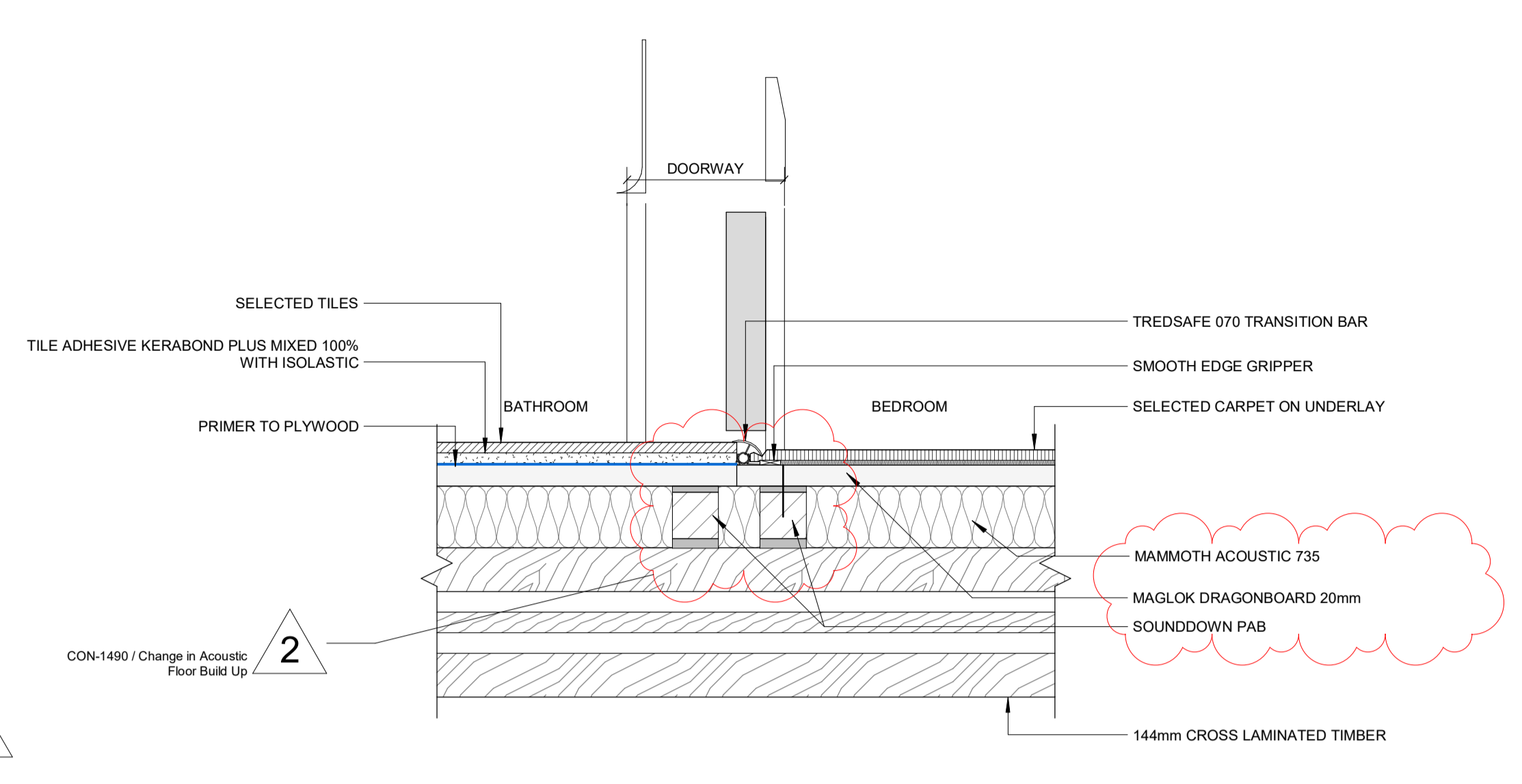
FLOOR DETAIL NOTES

1. WET AREAS TO BE FULLY WATER PROOFED USING APPROVED MEMBRANE INSTALLED IN ACCORDANCE WITH MANUFACTURERS SPECIFICATIONS. INSTALLATION TO BE DONE BY A QUALIFIED SPECIALIST. SUPPLY A COPY OF ALL MATERIALS / LITERATURE / INSTRUCTIONS TO THE TERRITORIAL AUTHORITY.
2. ALL PASSIVE FIRE RATED SOLUTIONS AND DETAILS ARE TO BE IN ACCORDANCE WITH REDSTAGE APPROVED AND TESTED SOLUTIONS.
3. ALL DETAILS ARE TO BE IN ACCORDANCE WITH GIB WET SYSTEM MANUFACTURERS INSTALLATION DETAILS AND SPECIFICATIONS.
4. ALL DETAILS TO BE IN ACCORDANCE WITH ARDEX MANUFACTURERS INSTALLATION DETAILS AND SPECIFICATIONS.
5. FLOOR FINISHES TO BE TAKEN UNDER JOINERY. EXCLUDES IN BUILT JOINERY.
6. REFER TO AR13 SHEET SERIES FOR SPECIFIED FLOORING SYSTEMS
7. REFER TO AR15 SHEET SERIES FOR SPECIFIED FLOOR FINISHES
8. REFER TO INTERIOR FINISHES SCHEDULE FOR SKIRTING SELECTIONS.
9. ALL FLOOR FINISHES TO COMPLY WITH NZBC D1 FOR SLIP RESISTANCE.

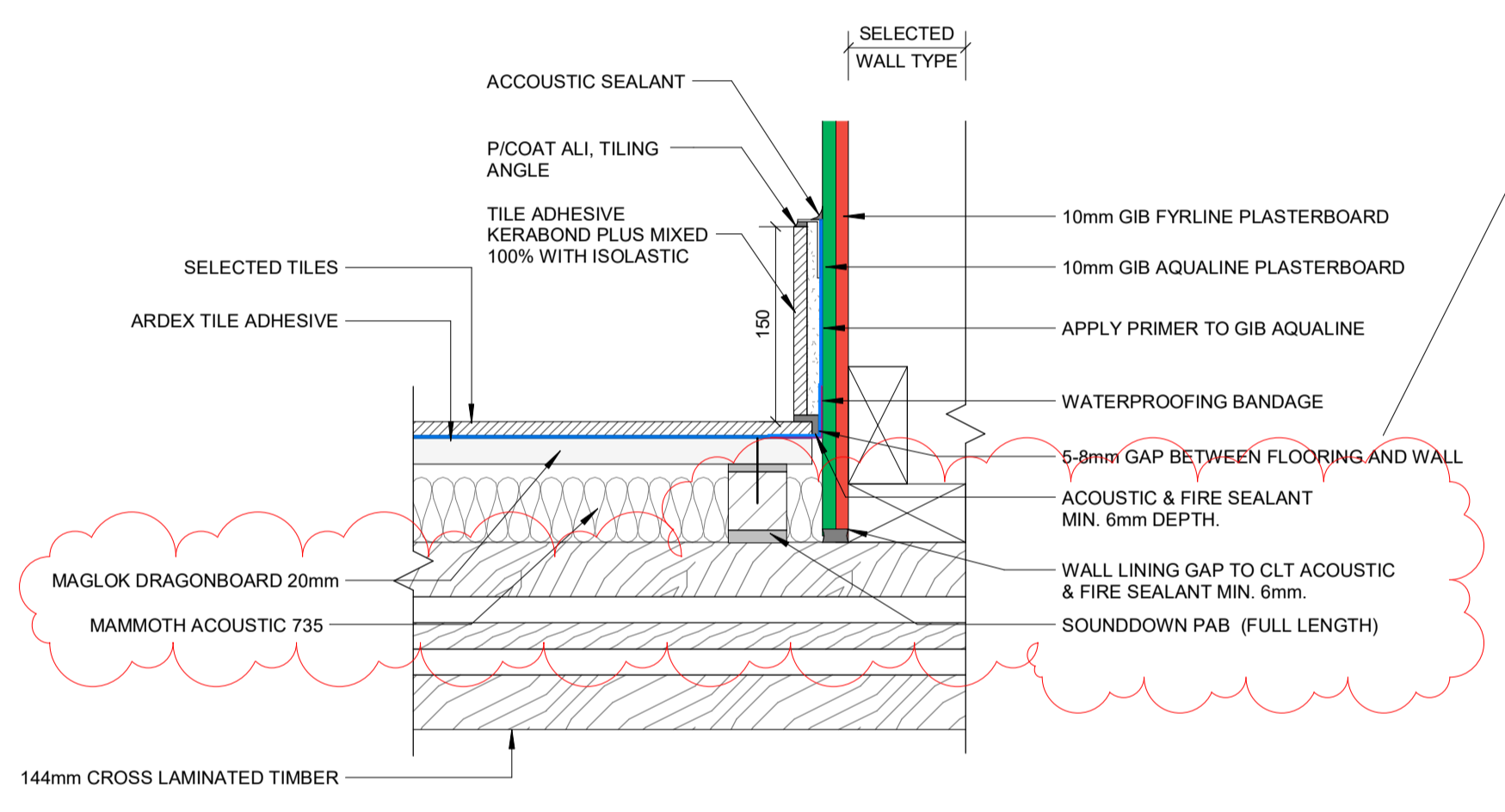
T.B.C



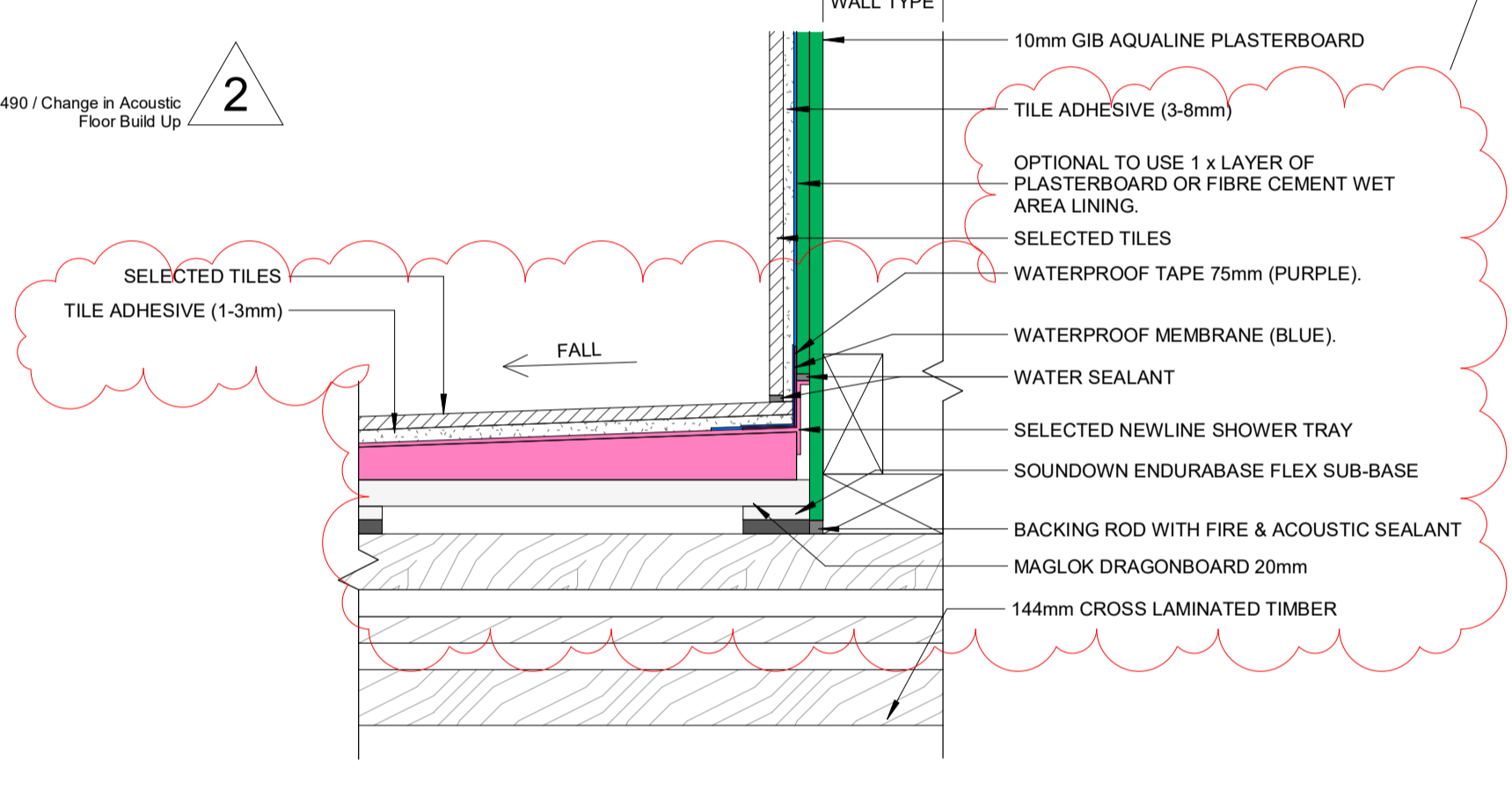
1 TYP. TILE ON ACOUSTIFLOR - WC WASTE PENETRATION
1:5 Ref: AR02-21100



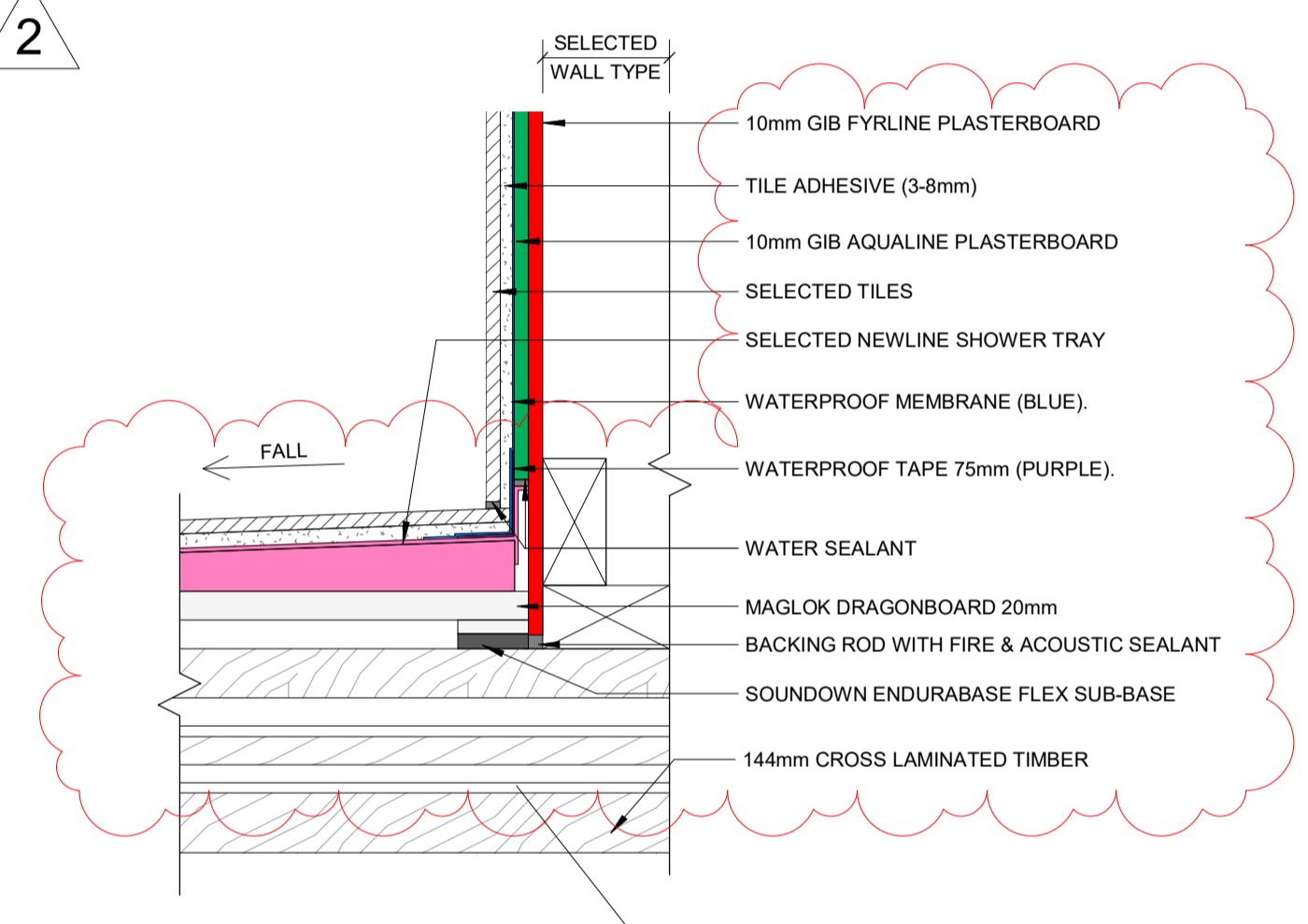
2 TYP. TILE ON ACOUSTIFLOR - BATHROOM TO BEDROOM FLOORING
1:5 Ref: AR02-21100



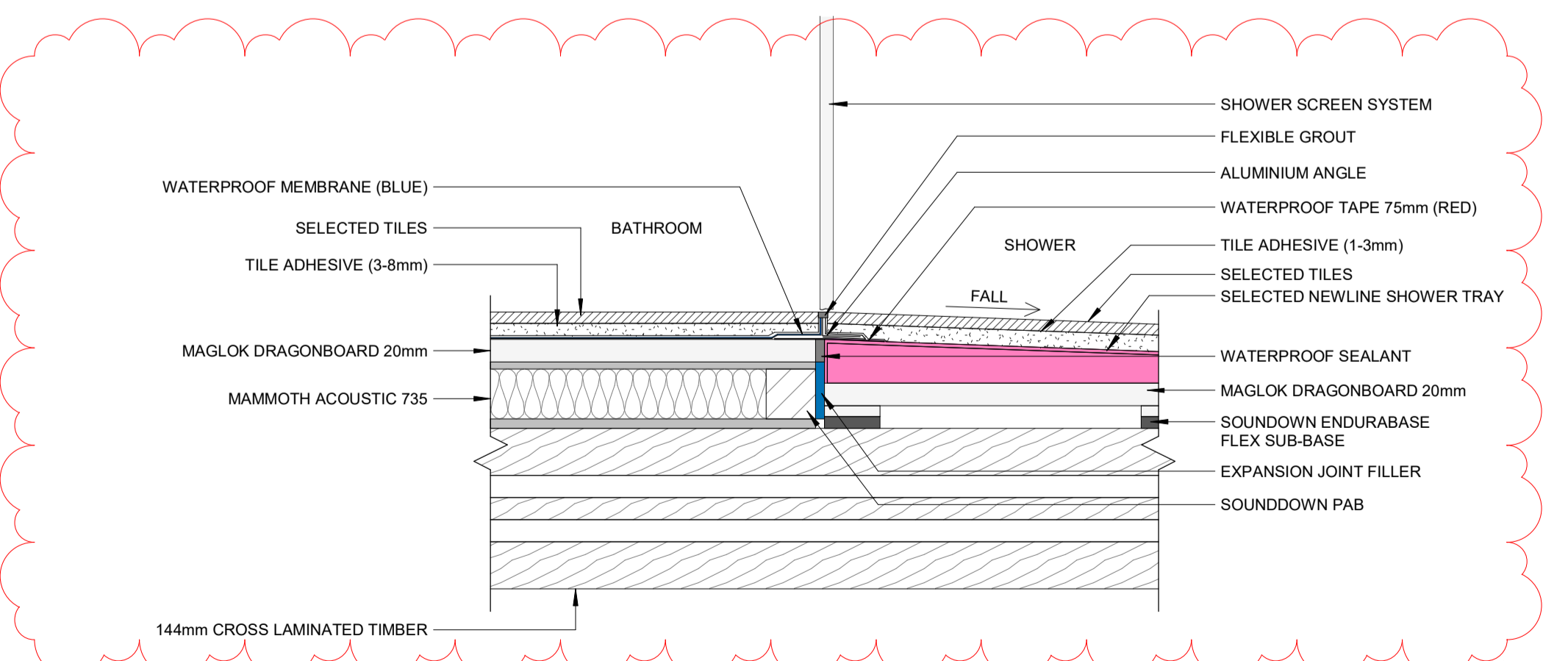
3 TYP. TILE ON ACOUSTIFLOR - BATHROOM FLOOR TO WALL JUNCTION
1:5 Ref: AR02-21100



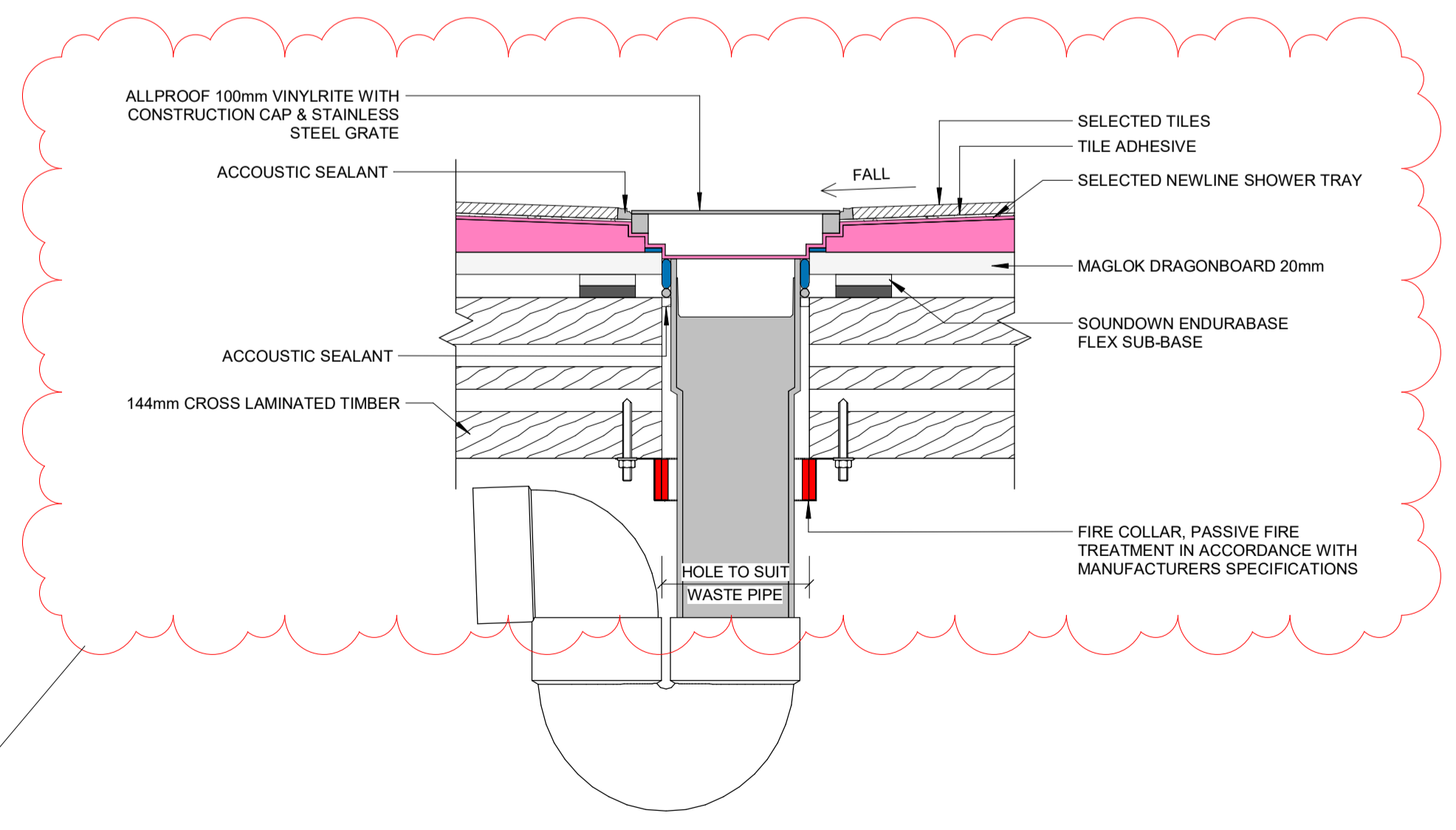
4 TYP. TILE ON ACOUSTIFLOR - SHOWER FLOOR TO WALL JUNCTION WITH SOUNDDOWN PAB
1:5 Ref: AR02-21100



5 TYP. TILE ON ACOUSTIFLOR - SHOWER FLOOR TO BRACING / FIRE / ACOUSTIC WALL JUNCTION WITH SOUNDDOWN PAB
1:5 Ref: AR02-21100



6 TYP. TILE ON ACOUSTIFLOR - BATHROOM TO SHOWER FLOORING WITH SOUNDDOWN PAB
1:5 Ref: AR02-21100



7 TYP. TILE ON ACOUSTIFLOR - SHOWER WASTE FLOOR PENETRATION WITH MODULAR
1:5 Ref: AR02-21100

2	31.08.23	CONSTRUCTION REV	LZ	LS
1	02.12.22	FOR CONSTRUCTION	LY	KR
B	01.09.22	FOR CONSENT	LY	KR
A	17.08.22	DETAILED DESIGN	KP	KR
Rev	Date	Description	Issued by	Checked by

Drawing Status: Approved @:
Powell Fenwick
Torque IP Blueprint
 INDEPENDENT TECHNOLOGY ADVISORS Consulting Engineers

CLIENT:
Summerset

ADDRESS:
 1 Mary Ann Drive, Cambridge
 PROJECT NO: 052
 STAGE:

SHEET NAME:
 TILE ON ACOUSTIFLOR FLOOR DETAILS
 SHEET NO:
 052-SMG-RMB-DR-AR97-00000
 REV 2

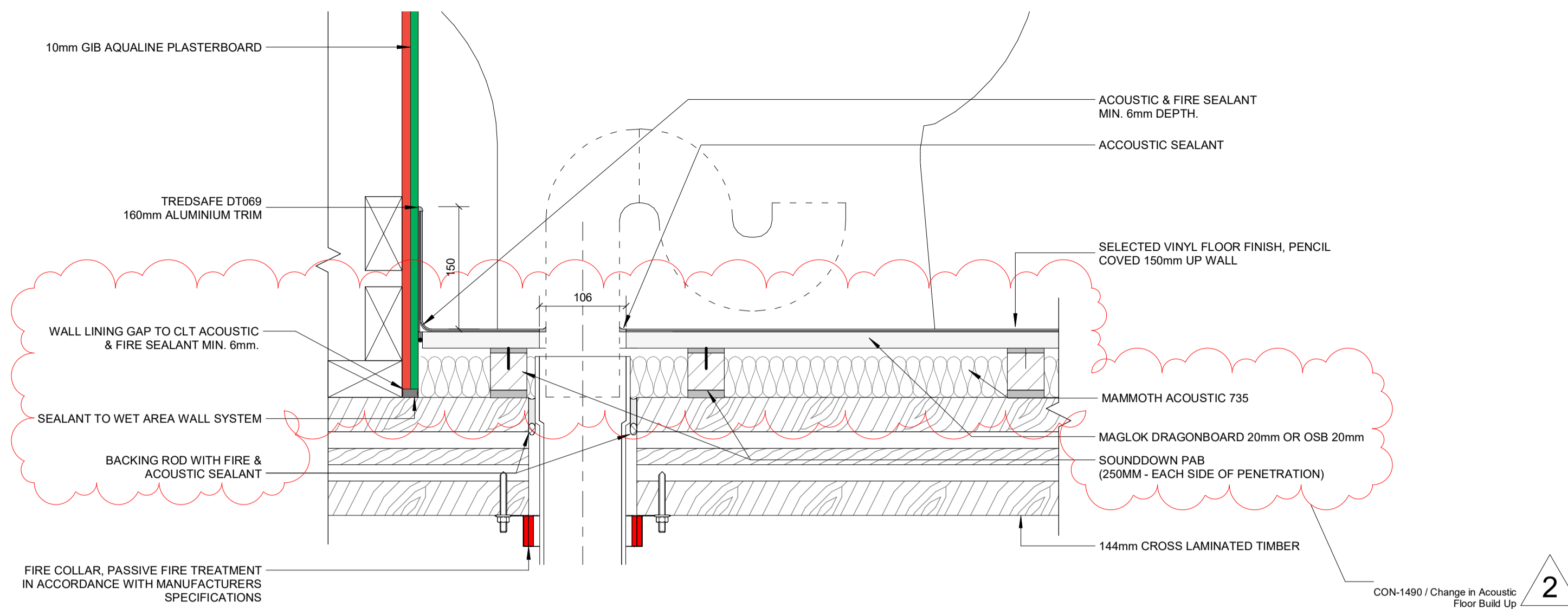
A1
 ORIGINAL
 DO NOT SCALE

GENERAL NOTES

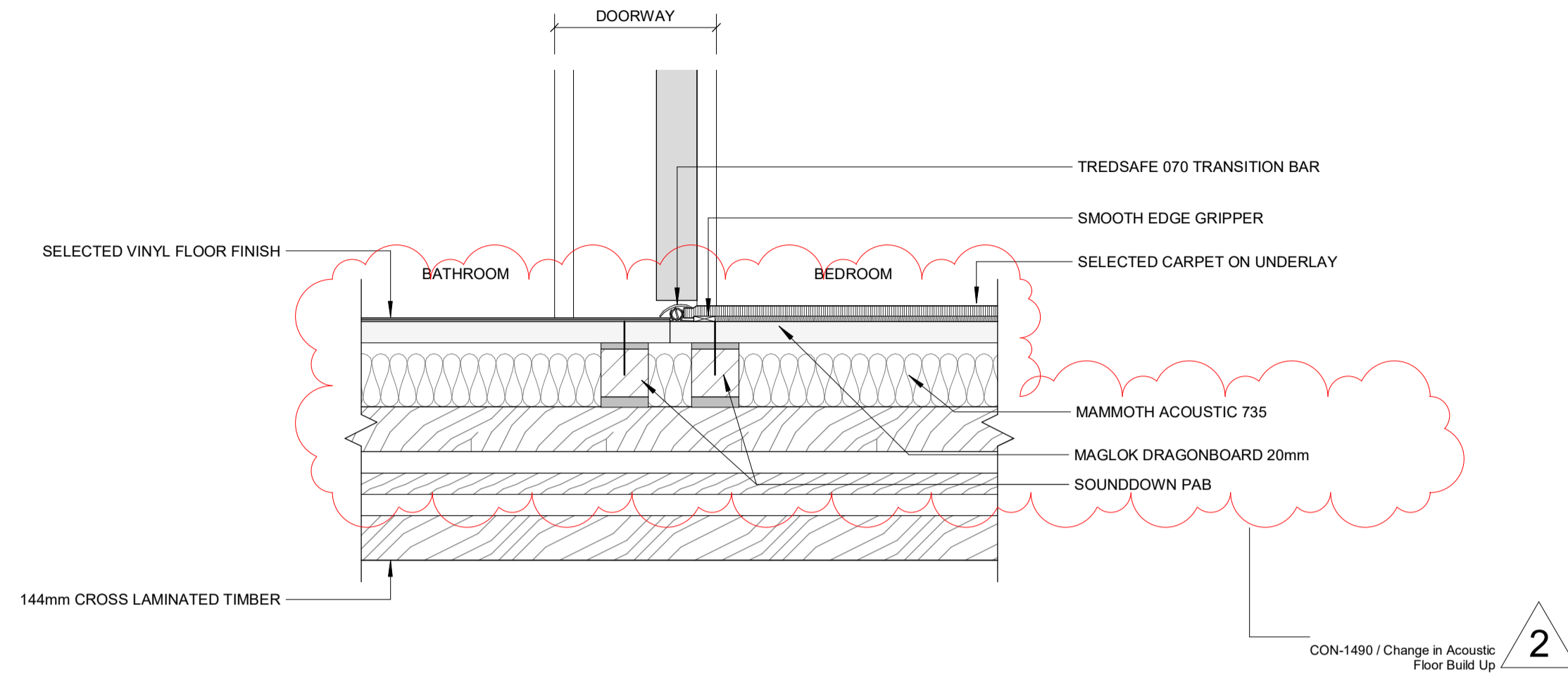
1. ALL REFERENCE TO NEW ZEALAND CODES OR STANDARDS SHALL BE TAKEN TO MEAN THE LATEST VERSION.
2. ANY DISCREPANCIES MUST BE BROUGHT TO THE DESIGNERS ATTENTION.
3. DO NOT DIMENSION DIRECTLY OFF THE DRAWINGS AS SCALE MAY BE OFF DUE TO PRINTING.

FLOOR DETAIL NOTES

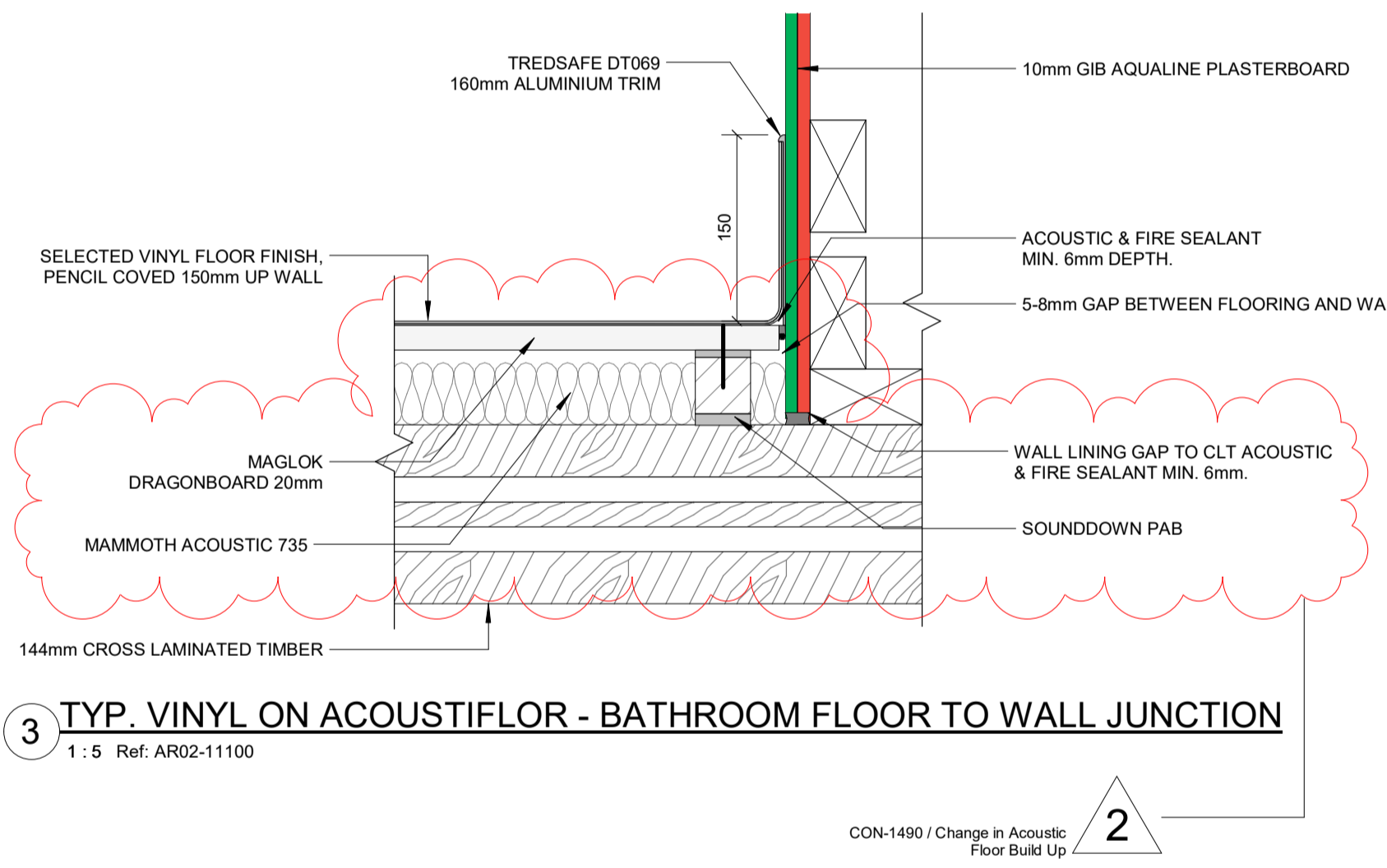
1. WET AREAS TO BE FULLY WATER PROOFED USING APPROVED MEMBRANE INSTALLED IN ACCORDANCE WITH MANUFACTURERS SPECIFICATIONS. INSTALLATION TO BE DONE BY A QUALIFIED SPECIALIST. SUPPLY A COPY OF ALL MATERIALS / LITERATURE / INSTRUCTIONS TO THE TERRITORIAL AUTHORITY.
2. ALL PASSIVE FIRE RATED SOLUTIONS AND DETAILS ARE TO BE IN ACCORDANCE WITH REDSTAGE APPROVED AND TESTED SOLUTIONS.
3. ALL DETAILS ARE TO BE IN ACCORDANCE WITH GIB WET SYSTEM MANUFACTURERS INSTALLATION DETAILS AND SPECIFICATIONS.
4. ALL DETAILS TO BE IN ACCORDANCE WITH ARDEX MANUFACTURERS INSTALLATION DETAILS AND SPECIFICATIONS.
5. FLOOR FINISHES TO BE TAKEN UNDER JOINERY. EXCLUDES IN BUILT JOINERY.
6. REFER TO AR13 SHEET SERIES FOR SPECIFIED FLOORING SYSTEMS
7. REFER TO AR15 SHEET SERIES FOR SPECIFIED FLOOR FINISHES
8. REFER TO INTERIOR FINISHES SCHEDULE FOR SKIRTING SELECTIONS.
9. ALL FLOOR FINISHES TO COMPLY WITH NZBC D1 FOR SLIP RESISTANCE.



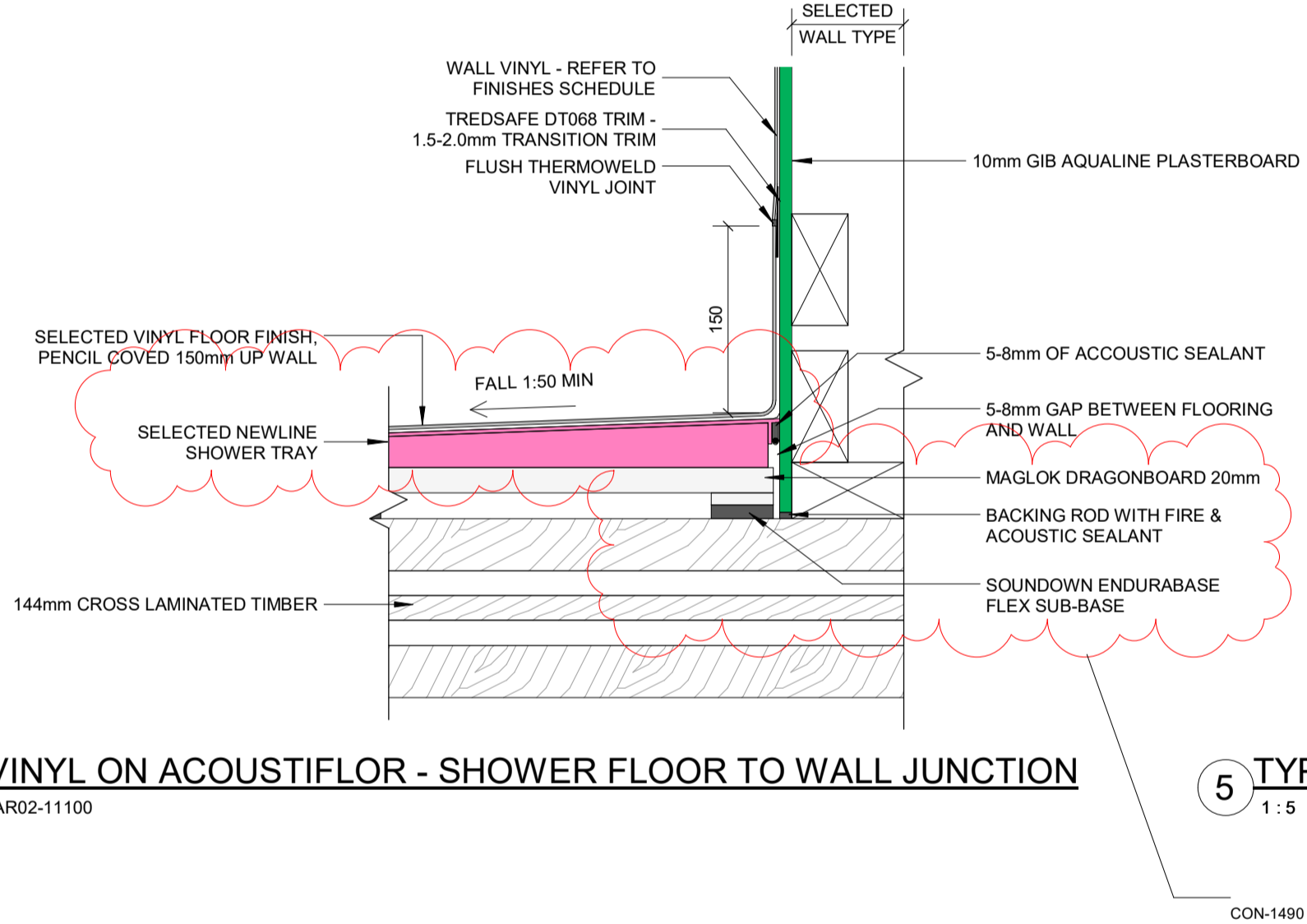
1 TYP. VINYL ON ACOUSTIFLOR - WC WASTE FLOOR PENETRATION
1:5 Ref: AR02-11100



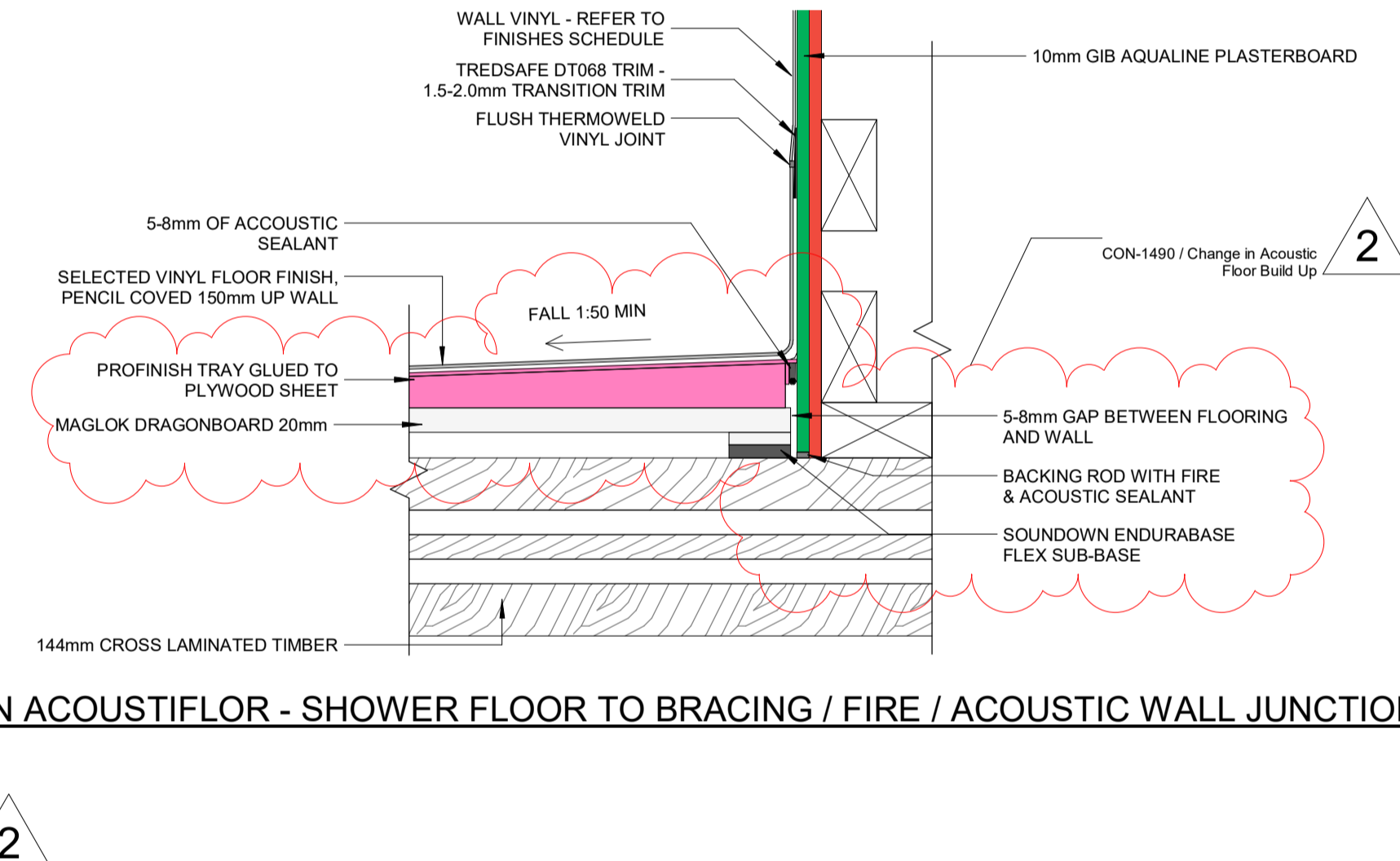
2 TYP. VINYL ON ACOUSTIFLOR - BATHROOM TO BEDROOM FLOORING
1:5 Ref: AR02-11100



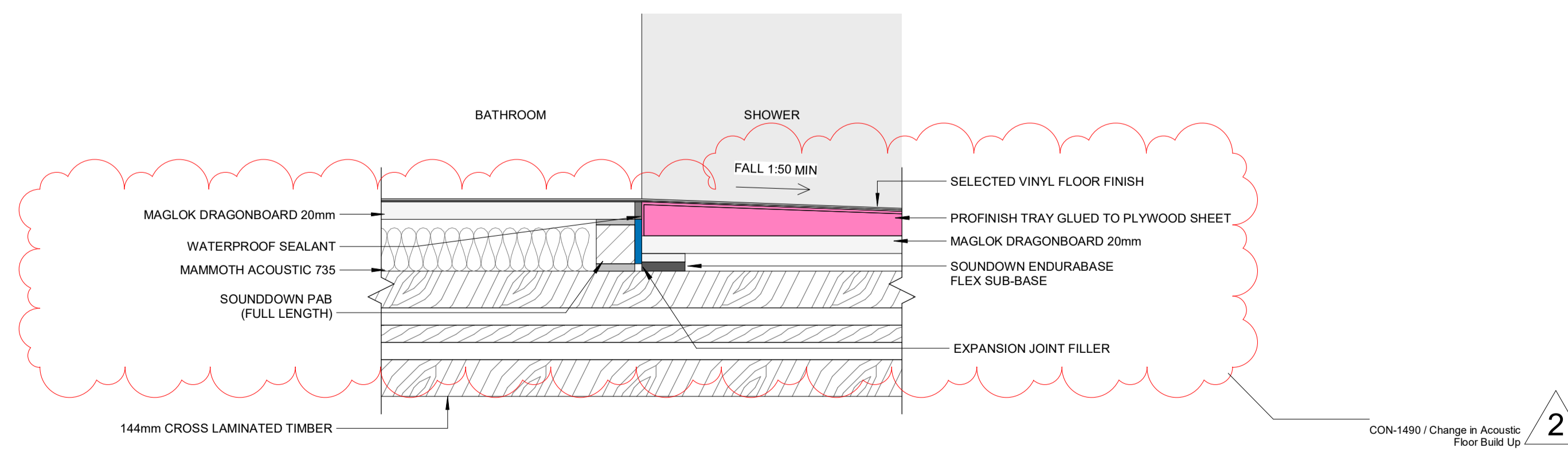
3 TYP. VINYL ON ACOUSTIFLOR - BATHROOM FLOOR TO WALL JUNCTION
1:5 Ref: AR02-11100



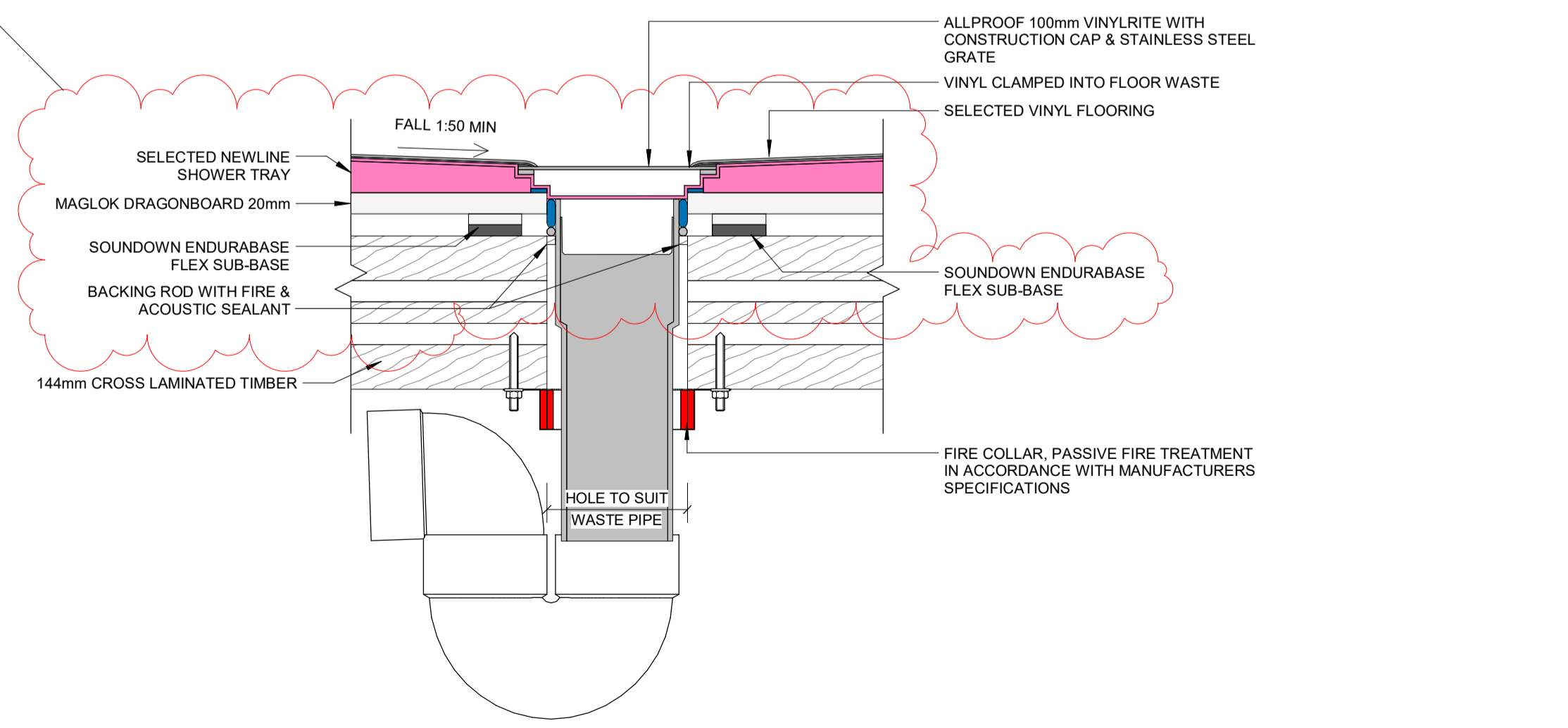
4 TYP. VINYL ON ACOUSTIFLOR - SHOWER FLOOR TO WALL JUNCTION
1:5 Ref: AR02-11100



5 TYP. VINYL ON ACOUSTIFLOR - SHOWER FLOOR TO BRACING / FIRE / ACOUSTIC WALL JUNCTION
1:5 Ref: AR02-11100



6 TYP. VINYL ON ACOUSTIFLOR - BATHROOM TO SHOWER FLOORING
1:5 Ref: AR02-11100



7 TYP. VINYL ON ACOUSTIFLOR - SHOWER WASTE FLOOR PENETRATION WITH SOUNDDOWN PAB
1:5 Ref: AR02-11100

T.B.C

Rev	Date	Description	Issued by	Checked by
2	31.08.23	CONSTRUCTION REV	LZ	LS
1	02.12.22	FOR CONSTRUCTION	LY	KR
B	01.09.22	FOR CONSENT	LY	KR
A	17.08.22	DETAILED DESIGN	KP	KR

Drawing Status: Approved @:
 CONSULTANT:
 Consulting Engineers

CLIENT:

 ADDRESS: 1 Mary Ann Drive, Cambridge
 PROJECT NO: 052
 STAGE: CAMBRIDGE
 SHEET NAME: VINYL ON ACOUSTIFLOR FLOOR DETAILS
 SHEET NO: 052-SMG-RMB-DR-AR97-00002
 REV: 2

A1 ORIGINAL DO NOT SCALE