

Building wrap

Euro Wall Flat Lock horizontal

Underlay

Vertical cavity batten

Plywood substrate

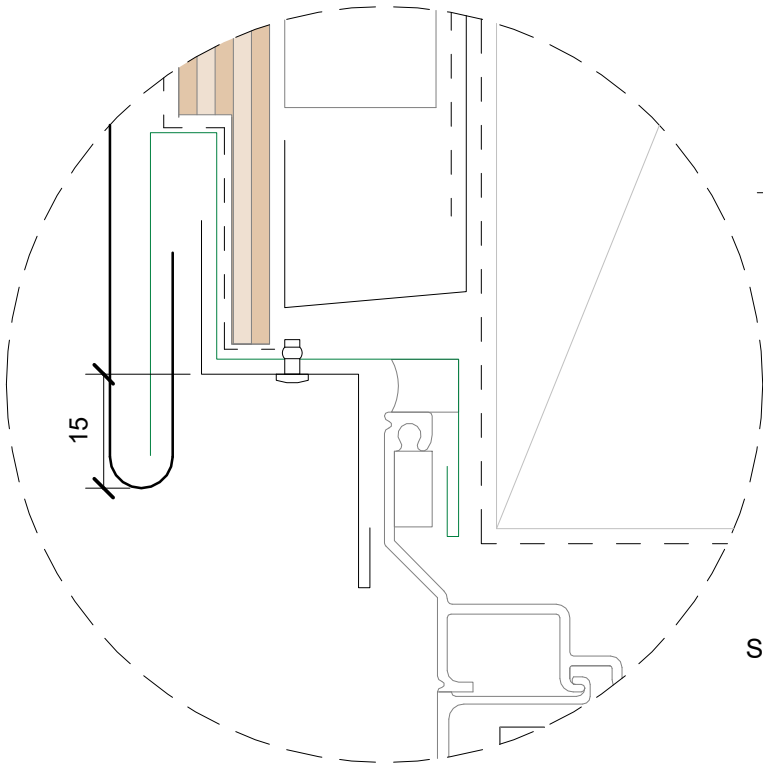
Proprietary metal cavity closure by Metal Design Solutions, non punched fall to one side. 100mm into cavity each side of opening

50mm x 3mm rebate in ply

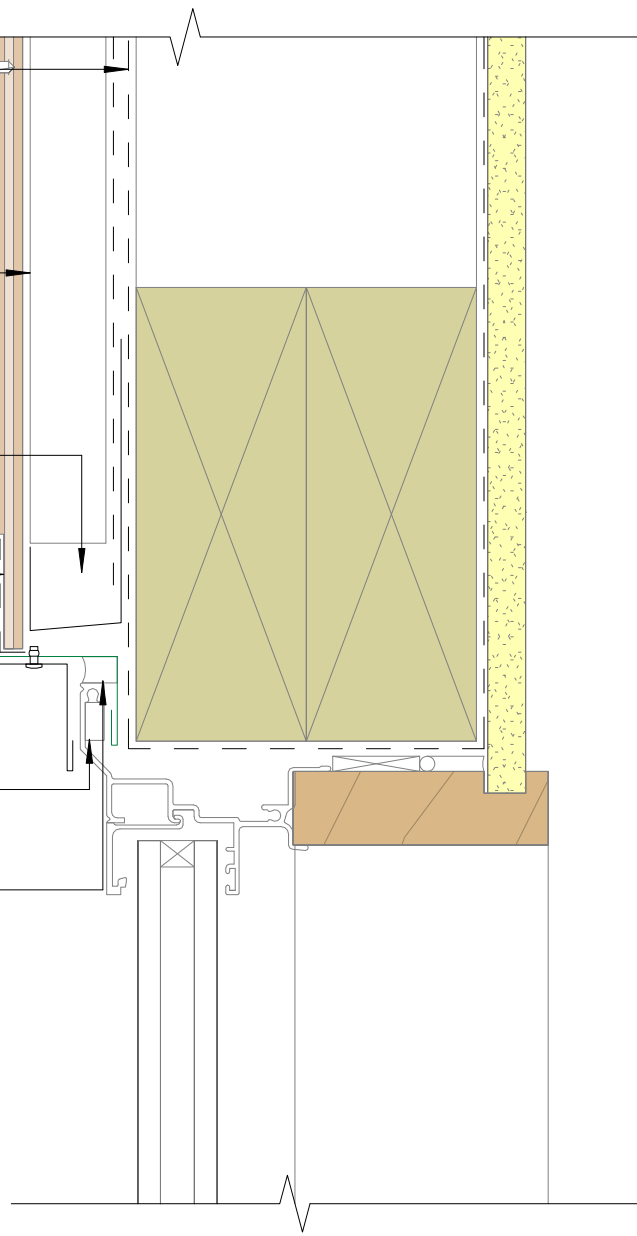
15 drip edge

Cell closed inseal tape by others

10mm gap between joinery and flashing, seal with MS silicone sealant - by others



Scale 1:2



Scale 1:5