

Millboard Envello Cladding Care and Maintenance Guide



0508 35 66 77
info@forte.co.nz
forte.co.nz
@forteflooring

1	THANK YOU	05
2	CLEANING YOUR MILLBOARD CLADDING	06
	2.1 REGULAR CLEANING	06
	2.2 AS REQUIRED	06
3	CARING FOR YOUR MILLBOARD CLADDING	07
	3.1 REPLACING DAMAGED BOARDS	07
4	CLEANING & CARE PRODUCTS	09
5	GENERAL INFORMATION	12
	5.1 DOES MILLBOARD CHANGE COLOUR OVER TIME?	12
	5.2 DOES MILLBOARD EXPAND OR CONTRACT?	12
	5.3 MILLBOARD TOLERANCES	12
6	WARRANTY OR TECHNICAL SUPPORT	15



1. Thank You

Thank you for choosing Millboard Envello cladding by Forté, we know you'll love it.

Millboard Envello cladding is designed to replicate the beauty and feel of natural timber, but without the maintenance, providing you with a practical and easy to care for cladding product.

The beauty of Millboard Envello cladding is how little upkeep it requires to keep it looking like new. With just a little tender loving care, you'll enjoy years of assurance, with no recoating or staining required.

We've carefully developed this Care and Maintenance Guide to help keep your cladding looking beautiful throughout the years. Aesthetically pleasing, sound in all weather conditions and easy to care for, Millboard is an ideal choice for New Zealand homes.

If you have any questions about caring for your Millboard Envello Cladding, please don't hesitate to call our Aftercare team.

The Forté Team

support@forte.co.nz

0508 35 66 77

2. Cleaning Your Millboard Cladding

Caring for your Millboard Envello Cladding is a lot easier than you might think. In fact, simple cleaning is the key to maintaining and prolonging your cladding's lifespan.

2.1

REGULAR CLEANING

When cleaning, we recommend removing dust and dirt using a hard bristle brush, broom or a low-pressure washer, starting at the top of the cladding and working downwards along the grain.

If cleaning Millboard Envello cladding with a pressure washer, it is recommended that the washer have a PSI of no greater than 2000. A fan tip should be used with a 40-60° spread, keeping the head 250-300mm away from the surface of the cladding.

Before cleaning, test in an inconspicuous area first as direct and prolonged contact could damage the surface of the boards.

Take extra care when using a pressure washer around windows, doors and boards with cut ends. If any stubborn marks are visible, these can be removed with a range of different household cleaners.

2.2

AS REQUIRED

We recommend cleaning your cladding twice a year or as required. As an exterior product, Millboard will benefit from this periodic clean to remove any accumulated dust or dirt residue.

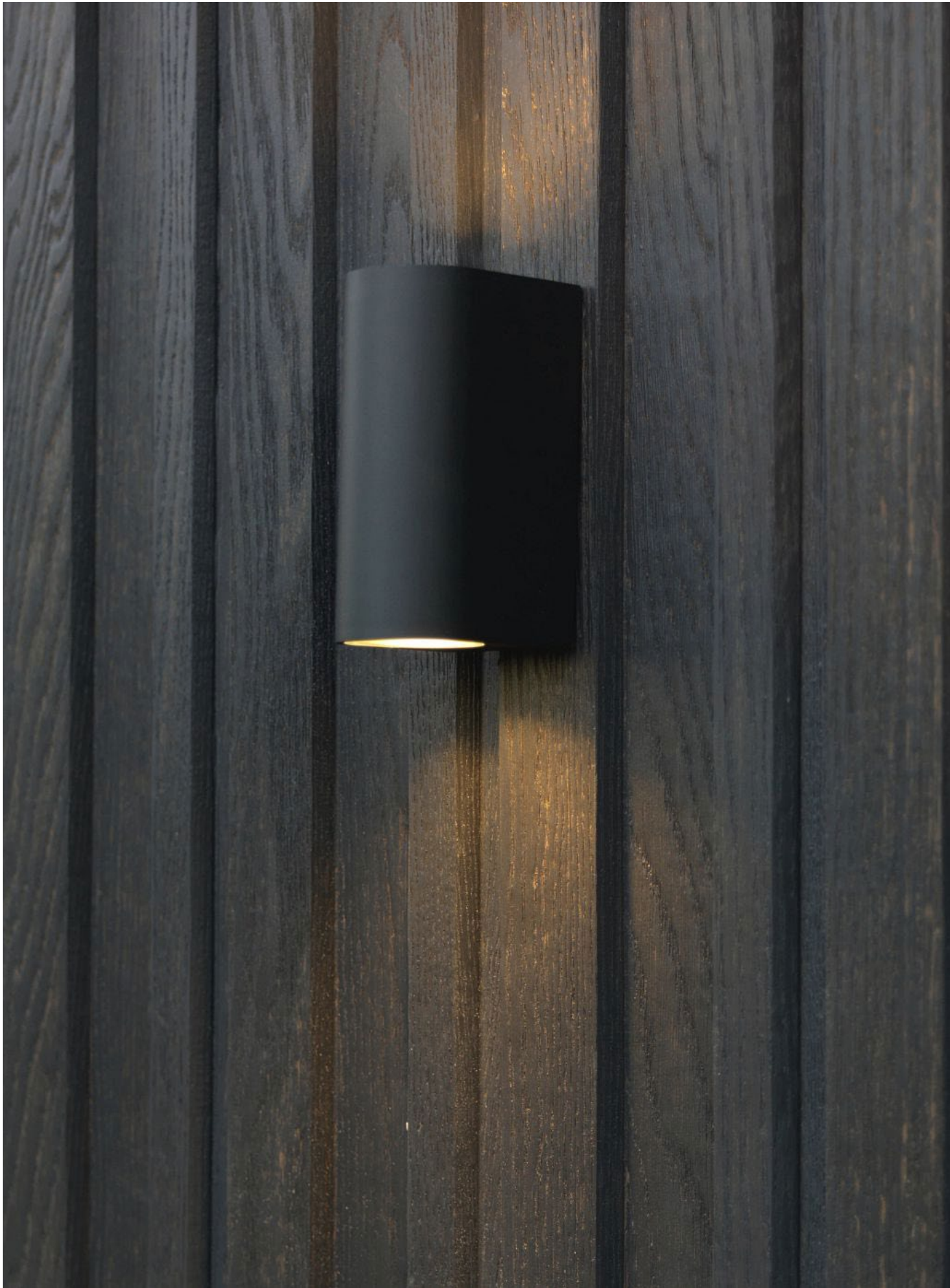
3. Caring For Your Millboard Cladding

3.1

REPLACING DAMAGED BOARDS

If a board gets damaged and needs replacing, then the following method should be used.

1. Set a circular saw to 45° and to a depth that will cut through the board without damaging the materials behind it.
2. Plunge-cut the saw into the surface of the damaged board roughly 2/3rds away from the groove side.
3. Run the saw the full length of the board taking care not to let the saw run into the next board and cause damage.
4. Remove the lower part of the board by starting in the middle, then lever the lower part of the board forward and gently pull up. This will pull the ends in as it is lifted.
5. Starting at the end, use a hammer and small block of wood and gently knock the groove of the cut board to pull it off the screws. This may need to be repeated where each screw is positioned, taking care not to damage the board above or beside it.
6. With a multi-tool, cut off each screw that was holding the board in place.
7. Cut the replacement board to length, keeping it laid face down on a flat surface to ensure the face is protected, then cut off the back of the groove.
8. Apply a bead of silicone into the groove of the existing board where the replacement will fit into as well as the back of the groove of the new board.
9. Push the tongue of the new board into the bottom of the board that is directly above and beside it, then press into place.
10. Surface fix along the bottom of the new board and the boards directly above and beside it with coloured head screws. Clean down any dust or excess silicone.



4. Cleaning and Care Products

To keep your cladding looking as new as the day it was installed, we recommend the use of the below care products. It is important to note that using other products may lead to inferior results or leave harmful residue on your cladding boards.



Browns Superior Deck Scrub

We recommend scrubbing your Millboard cladding boards with a hard bristle brush, similar to the Browns Superior Deck Scrub.



Wet & Forget® Double Bubble House Wash

The Double Bubble House wash is an ideal product to use on your Millboard cladding boards as it assists in dissolving dirt, grime and the build up of airborne contaminants that accumulate on exterior surfaces.



SikaFlex® 221

We recommend using SikaFlex 221 as this is a multi-purpose adhesive that bonds well to various substrates. It is resistant to aging and can be sanded and painted, making it ideal for exterior cladding.



CLR® Calcium, Lime & Rust Remover

CLR® quickly and easily dissolves and removes tough calcium and lime deposits and can be used to remove tough rust stains. CLR® is recognised as a safer alternative to traditional chemicals. It contains no phosphates and is septic free.





5. General Information

5.1

DOES MILLBOARD CHANGE COLOUR OVER TIME?

Millboard cladding boards are resistant to fading and sun damage, far more so than timber or wood-plastic composite cladding boards. However, this will vary depending on the particular environment in which it is installed and the use to which it is subjected.

Relevant factors to consider include sunlight and ultraviolet (UV) radiation, hot/cold temperature cycling, darker/richer coloured paint and coastal/pool environments.

Like any product used outdoors, Millboard will naturally weather and the colour will lighten slightly over time, but not to the extent of regular timber cladding.

We recommend choosing lighter colours in areas that are prone to high UV levels as they tend to absorb less heat and UV radiation. We also suggest selecting glass for

surrounding windows and doors that don't intensify UV radiation onto the boards.

Contamination by dust and dirt can also often cause the appearance of colour change and lightening of the surface. To help avoid this, please ensure the surface of the boards are cleaned and maintained as per our guidance.

Note: A slight yellowing, especially in the deeper grain of Millboard cladding boards, will be visible over time and a loss of gloss is also expected and intentional. Millboard Envello boards have been specially designed to do this with the intention of replicating the natural pieces of timber that they have been carefully moulded from, along with its unique hand-coloured process.

5.2

DOES MILLBOARD EXPAND OR CONTRACT?

Due to Millboard's solid resin/mineral core, movement is expected and generally minimal. Typically, we see up to 0.1% movement with Millboard cladding boards, which is less than you would usually see in timber or composite

cladding. In some cases, when the cladding is surrounded by glass, water, or is in the sun all day, you may see up to 0.2% movement which equates to 7.2mm over a full 3.6m length of Millboard.

5.3

MILLBOARD TOLERANCES

Millboard cladding boards are individually hand-moulded from natural oak, and due to the pressure of the moulding process, there will always be a slight variance in the board's dimensions. Despite this, each board is calibrated to ensure a consistent profile is maintained.

These slight variances in the board's dimensions are due to the following factors:

- The boards are moulded from natural oak (natural products are never uniform)
- The pressure of the moulding process (may cause slight variances)

Our manufacturing tolerances are as follows:

- Width: $\pm 3\text{mm}$
- Length: $\pm 5\text{mm}$
- Thickness: $\pm 2\text{mm}$





6. Warranty and Technical Support

We stand by the quality of our Millboard Envello products. If you have an issue with your cladding boards, please hold off from installing the product and contact our Aftercare team to discuss a solution. Alternatively, you can visit the [Customer Service](#) page on our website for further information. For information on the Structural Warranty of your Millboard Envello Cladding, please refer to the [Resources](#) page on our website.

Forté Aftercare
support@forte.co.nz
0508 35 66 77

Auckland
299 Great North Road,
Grey Lynn, Auckland

Pukekohe
3 Keith Place,
Pukekohe, Auckland

Christchurch
93 Manchester Street,
Christchurch

Queenstown
179 Glenda Drive,
Frankton, Queenstown

forte.co.nz
info@forte.co.nz
0508 35 66 77