

# RESIDENTIAL RIBLINE® WALL HORIZONTAL ON CAVITY

## JAMB FLASHING FOR HORIZONTAL CLADDING (RECESSED WINDOW/DOOR)

Detail Number: RI-RRWHC-130B

Date drawn: 25/07/2024

Scale: 1 : 5@ A4

BUILDING WRAP DRESSED INTO OPENING WITH 50mm RETURN TO INSIDE OF FRAME WITH WINDOW FLASHING TAPE INSTALLED OVER WRAP TO CORNERS

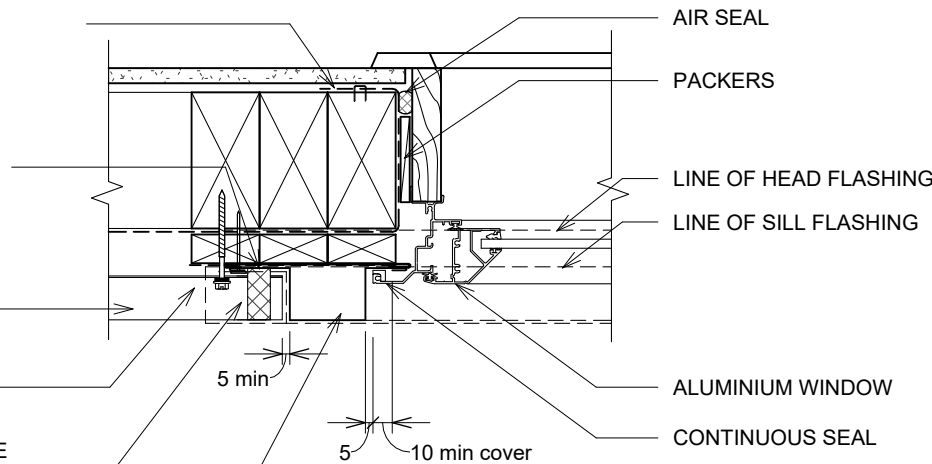
SEPARATION OF BATTEN AND METAL CLADDING

ROOFING INDUSTRIES 'RIBLINE'

SCREW FIXING

CONTINUOUS COMPRESSIBLE FOAM TO MATCH PROFILE SET IN SEALANT

ROOFING INDUSTRIES JAMB FLASHING



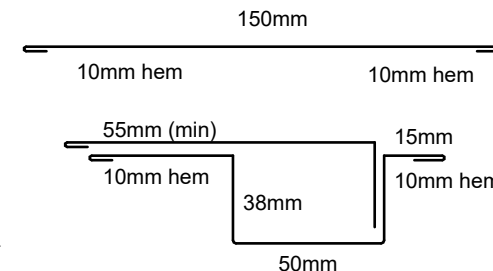
### DETAIL ANNOTATION:

1. ARCHITRAVE'S ARE SHOWN FOR CONSISTENCY ONLY, DETAIL MAY BE USED WITH REBATED LINER
2. LIAISE WITH WINDOW MANUFACTURER PRIOR TO INSTALLATION
3. FASTENERS TO BE COMPATIBLE WITH MATERIAL BEING FIXED AND THE SUITABLE GRADE FOR THE ENVIRONMENT IN WHICH LOCATED
4. CAVITY BATTENS CONTAINING CORROSIVE TREATMENTS MUST BE SEPARATED FROM METAL CLADDING BY DPC, WALL UNDERLAY, PVC OR PAINTING
5. REFER TO UNDERLAY MANUFACTURERS REQUIREMENTS FOR INSTALLATION RECOMMENDATIONS

SOAKER (BACK TRAY) FLASHING TO RUN FROM TOP OF HEAD FLASHING TO GROUND OR EXIT POINT.

### GENERAL NOTES:

- These details are to be read with Roofing Industries Ribline Product Technical Statement.
- The building designer is ultimately responsible to ensure that the details used meet the requirements of the NZ Building Code for the specific project.
- Details of the supporting structure (including cavity battens if used) are indicative only and are the responsibility of the building designer. For steel framed buildings thermal break cavity battens may be required.
- Roof/wall underlay selection are the responsibility of the designer. Underlay to be installed in accordance with underlay manufacturer's recommendations and requirements.
- These details are for Roofing Industries profile/s as nominated and may not be applicable to other profiles.
- This drawing is the copyright of 'Roofing Industries' and can only be copied or reproduced with their permission.
- Further information can be obtained from the NZ Metal Roof & Wall Cladding Code of Practice: [www.metalroofing.org.nz](http://www.metalroofing.org.nz) or E2/AS1 where applicable.
- Details are for steel-based materials, other substrates may require some changes.
- All dimensions are nominal.
- Fixings: The designer needs to check the screw manufacturer's technical data of the selected screw type for the design wind load and the material being fastened to.



FLASHING DIMENSIONS ARE INDICATIVE ONLY AND ARE TO BE MEASURED AND DETERMINED ONSITE

Copyright detail © 2024

