

## Index

### Details for - Rusticated Weatherboards 20mm Cavity Batten - Flexible Underlay

3-4-001	Index
3-4-101	Nail Fixing
3-4-111	Penetrations
3-4-151	Meter Box - Bottom
3-4-152	Meter Box - Side
3-4-153	Meter Box - Head
3-4-211	Bottom of Wall - Timber Floor
3-4-221	Bottom of Wall - Concrete Floor
3-4-301	External Boxed Corner
3-4-351	Internal Corner - Option A
3-4-352	Internal Corner - Option B
3-4-501	Door Sill
3-4-502	Door Jamb
3-4-503	Door Head
3-4-601	Window Sill
3-4-602	Window Jamb
3-4-603	Window Head
3-4-801	Eave Soffit
3-4-802	Flush Eave
3-4-851	Barge Soffit
3-4-852	Flush Barge
3-4-901	Roof to Wall - Top of roofing
3-4-902	Roof to Wall - Side of roofing
3-4-911	Parapet

#### Notes:

Standards referred to in these Details;

- E2/AS1 External Moisture (Amendment 9 June 2019)
- NZS3604:2011 Timber-framed Buildings

All Details have been 'exploded' for clarity

Aluminium Joinery profiles used in these details are from "Nulook", change these profiles for the profiles of the Joinery company you are using



Ph: 03 544 6006  
Email: sales@htlgroup.co.nz  
Website: www.htlgroup.co.nz  
48 Beach Road, Richmond, Nelson 7020  
P O Box 3050, Richmond, Nelson 7050

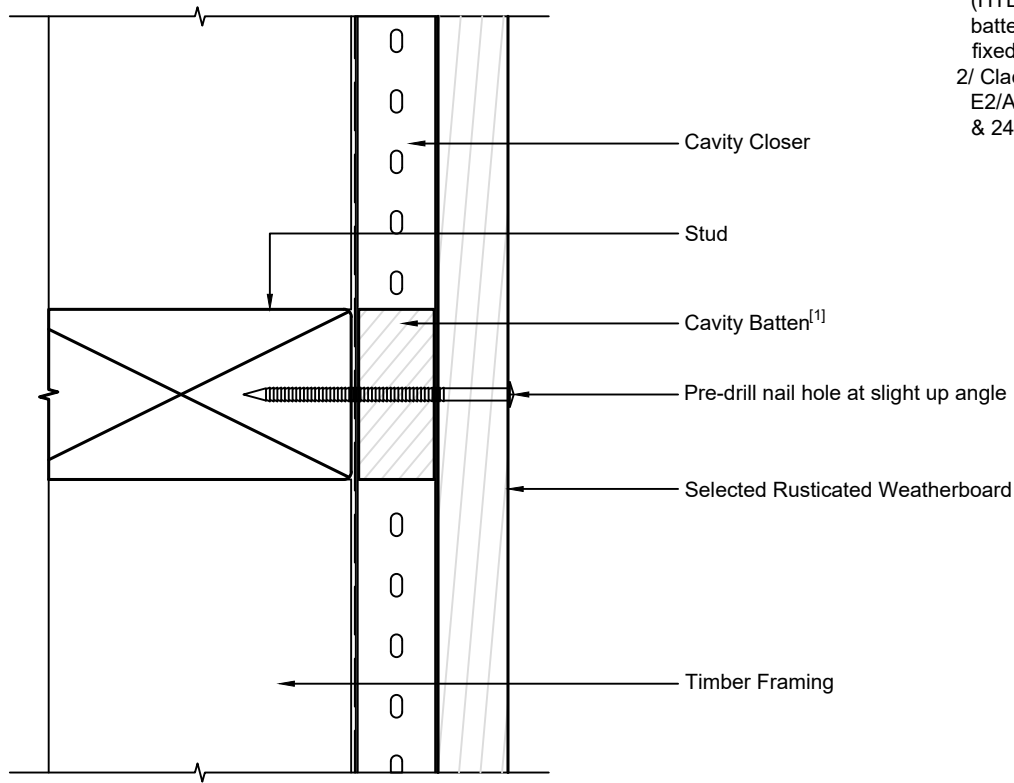
**Rusticated Weatherboards  
20mm Cavity Batten - Flexible Underlay  
Index**

1:2 @ A4 | 2021/01/26

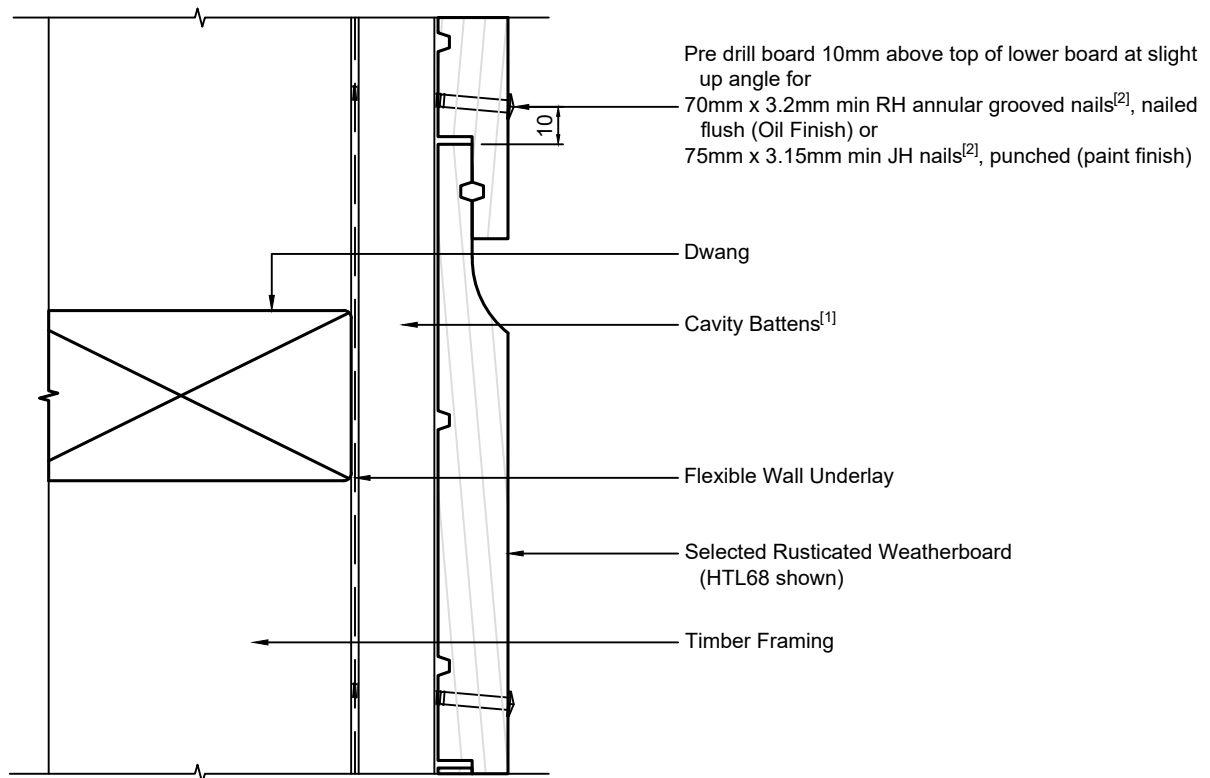
Drawing No.  
3-4-001

**Note:**

- 1/ Cavity Battens are Horizontal Castellated timber battens (HTLBH20) and plain vertical battens (HTLBV20), temporarily fixed with cladding nails
- 2/ Cladding Fixings to comply with E2/AS1 para. 9.4.3.1 & Tables 20 & 24



Horizontal cross section



Vertical cross section



Ph: 03 544 6006  
 Email: sales@htlgroup.co.nz  
 Website: www.htlgroup.co.nz  
 48 Beach Road, Richmond, Nelson 7020  
 P O Box 3050, Richmond, Nelson 7050

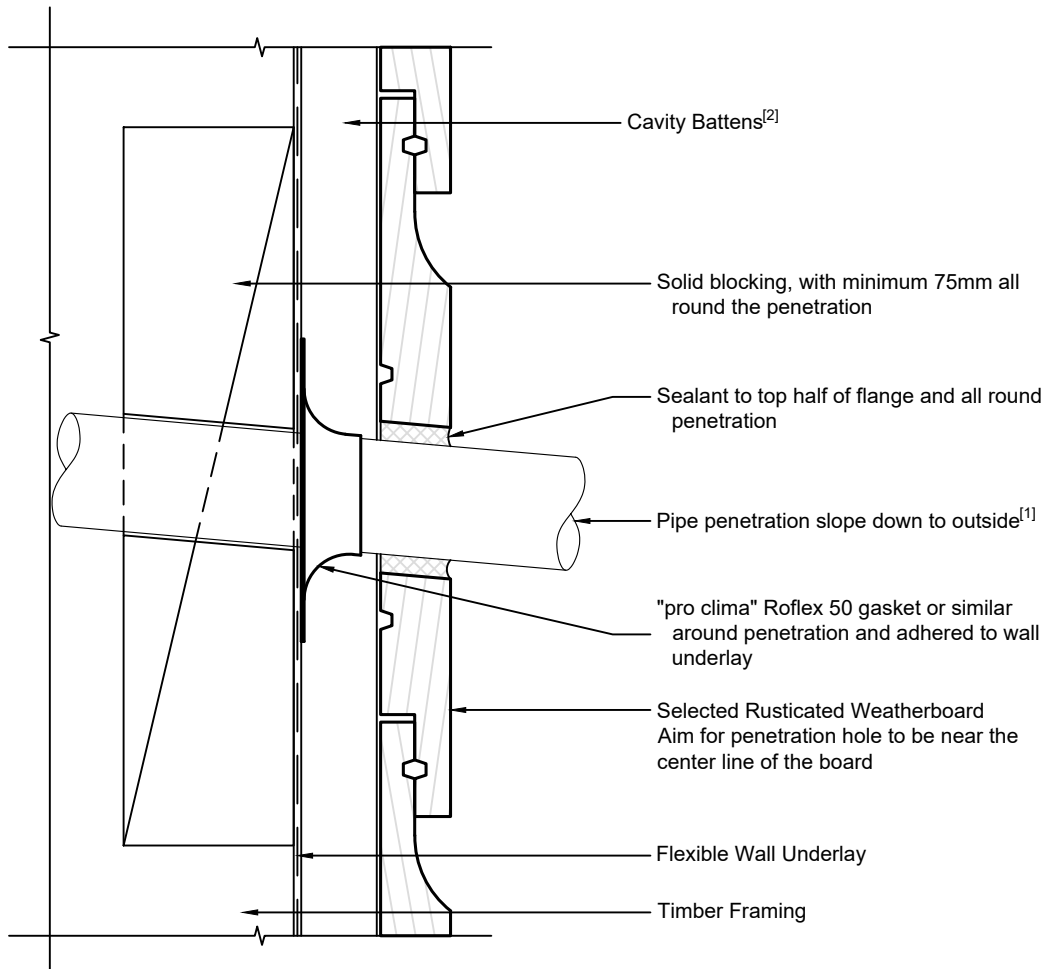
**Rusticated Weatherboards**  
**20mm Cavity Batten - Flexible Underlay**  
**Nail Fixing detail**

1:2 @ A4

2021/01/26

Drawing No.  
 3-4-101

- Note:
- 1/ Penetration to comply with E2/AS1 para. 9.1.9.3 & Fig. 68
  - 2/ Cavity Battens are Horizontal Castellated timber battens (HTLBH20) and plain vertical battens (HTLBV20), temporarily fixed with cladding nails
  - 2/ Cladding Fixings to comply with E2/AS1 para. 9.4.3.1 & Tables 20 & 24



Ph: 03 544 6006  
 Email: sales@htlgroup.co.nz  
 Website: www.htlgroup.co.nz  
 48 Beach Road, Richmond, Nelson 7020  
 P O Box 3050, Richmond, Nelson 7050

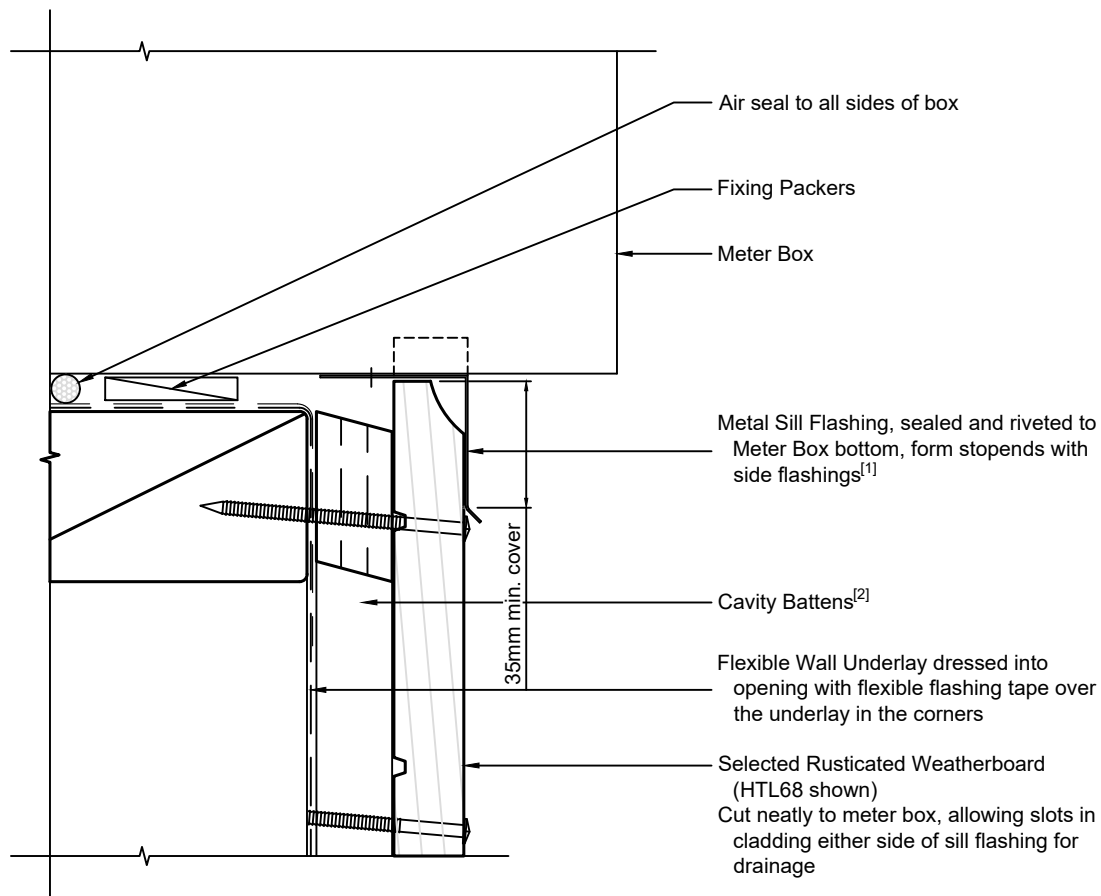
**Rusticated Weatherboards**  
**20mm Cavity Batten - Flexible Underlay**  
**Penetration detail**

1:2 @ A4 | 2021/01/26

Drawing No.  
3-4-111

**Note:**

- 1/ To comply with E2/AS1 para. 9.1.9.3
- 2/ Cavity Battens are Horizontal Castellated timber battens (HTLBH20) and plain vertical battens (HTLBV20), temporarily fixed with cladding nails
- 3/ Cladding Fixings to comply with E2/AS1 para. 9.4.3.1 & Tables 20 & 24



Ph: 03 544 6006  
Email: sales@htlgroup.co.nz  
Website: www.htlgroup.co.nz  
48 Beach Road, Richmond, Nelson 7020  
P O Box 3050, Richmond, Nelson 7050

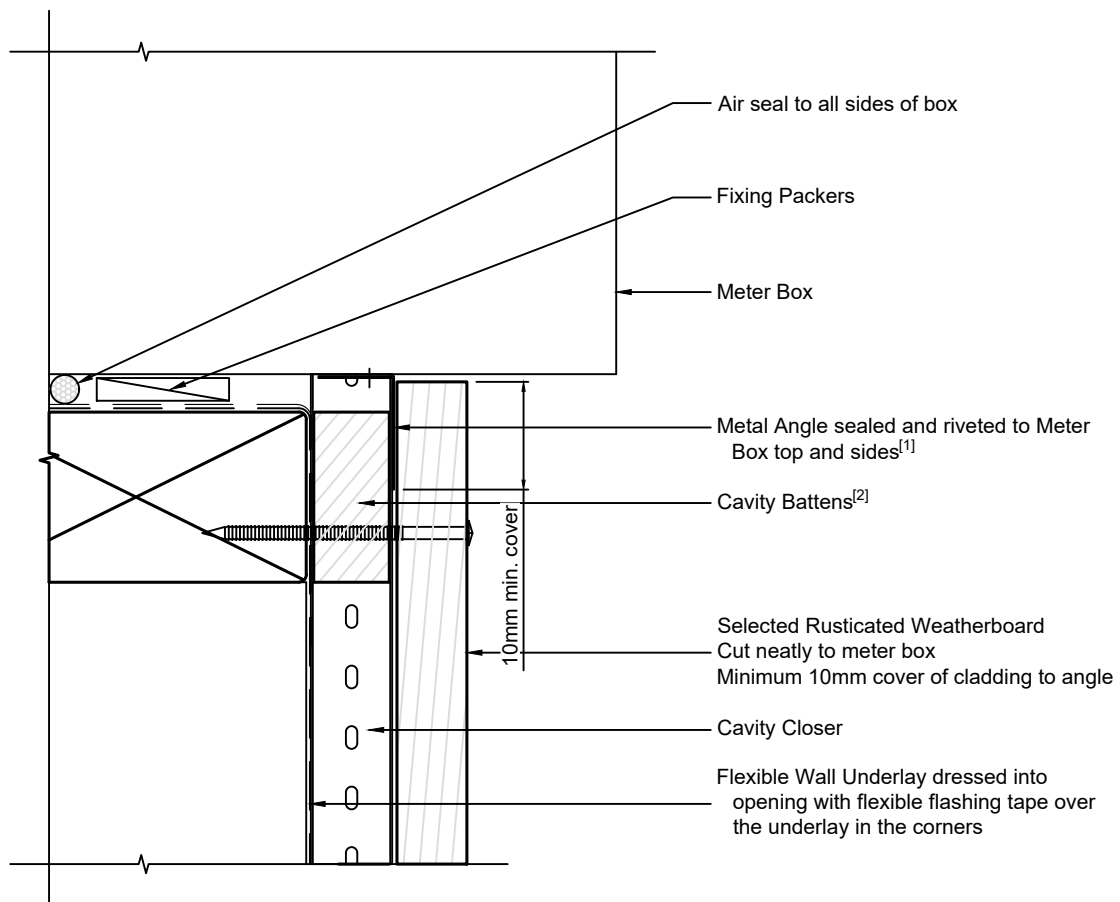
**Rusticated Weatherboards**  
**20mm Cavity Batten - Flexible Underlay**  
**Meter Box - Bottom detail**

1:2 @ A4 | 2021/01/26

Drawing No.  
3-4-151

**Note:**

- 1/ To comply with E2/AS1 para. 9.1.9.3
- 2/ Cavity Battens are Horizontal Castellated timber battens (HTLBH20) and plain vertical battens (HTLBV20), temporarily fixed with cladding nails
- 3/ Cladding Fixings to comply with E2/AS1 para. 9.4.3.1 & Tables 20 & 24



Ph: 03 544 6006  
Email: sales@htlgroup.co.nz  
Website: www.htlgroup.co.nz  
48 Beach Road, Richmond, Nelson 7020  
P O Box 3050, Richmond, Nelson 7050

**Rusticated Weatherboards**  
**20mm Cavity Batten - Flexible Underlay**  
**Meter Box - Side detail**

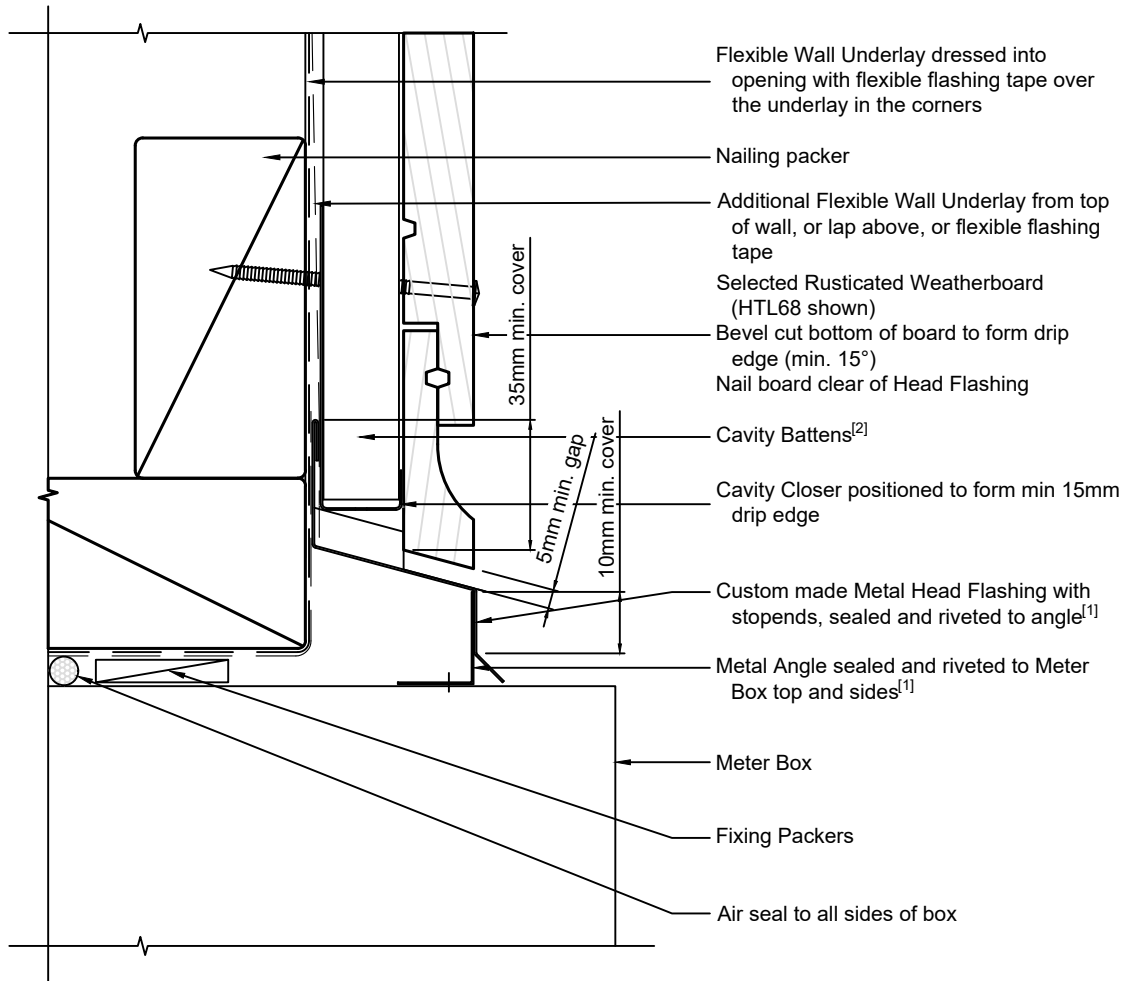
1:2 @ A4

2021/01/26

Drawing No.  
3-4-152

**Note:**

- 1/ To comply with E2/AS1 para. 9.1.9.3
- 2/ Cavity Battens are Horizontal Castellated timber battens (HTLBH20) and plain vertical battens (HTLBV20), temporarily fixed with cladding nails
- 3/ Cladding Fixings to comply with E2/AS1 para. 9.4.3.1 & Tables 20 & 24



Ph: 03 544 6006  
 Email: sales@htlgroup.co.nz  
 Website: www.htlgroup.co.nz  
 48 Beach Road, Richmond, Nelson 7020  
 P O Box 3050, Richmond, Nelson 7050

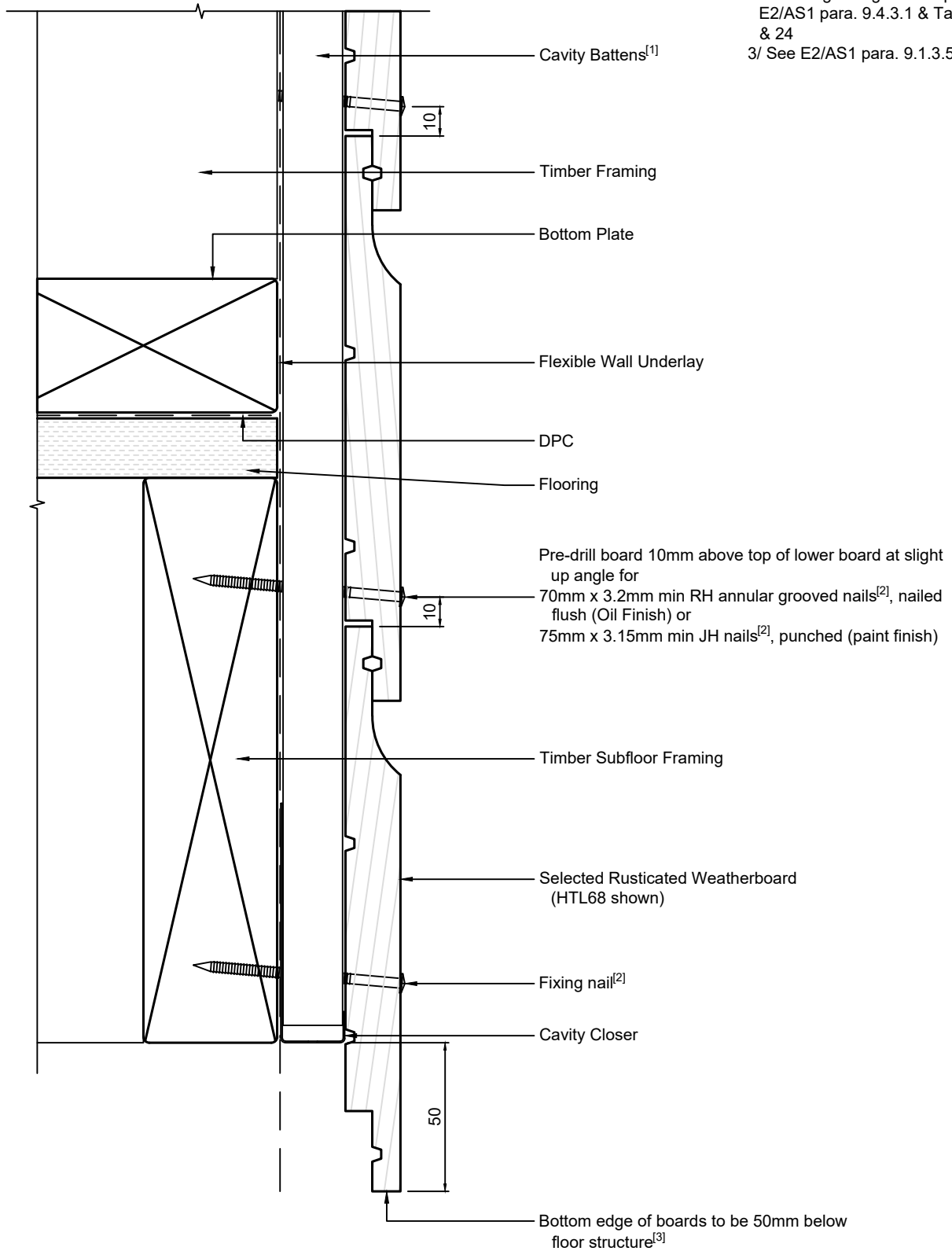
**Rusticated Weatherboards**  
**20mm Cavity Batten - Flexible Underlay**  
**Meter Box - Head detail**

1:2 @ A4 | 2021/01/26

Drawing No.  
 3-4-153

**Note:**

- 1/ Cavity Battens are Horizontal Castellated timber battens (HTLBH20) and plain vertical battens (HTLBV20), temporarily fixed with cladding nails
- 2/ Cladding Fixings to comply with E2/AS1 para. 9.4.3.1 & Tables 20 & 24
- 3/ See E2/AS1 para. 9.1.3.5(a)



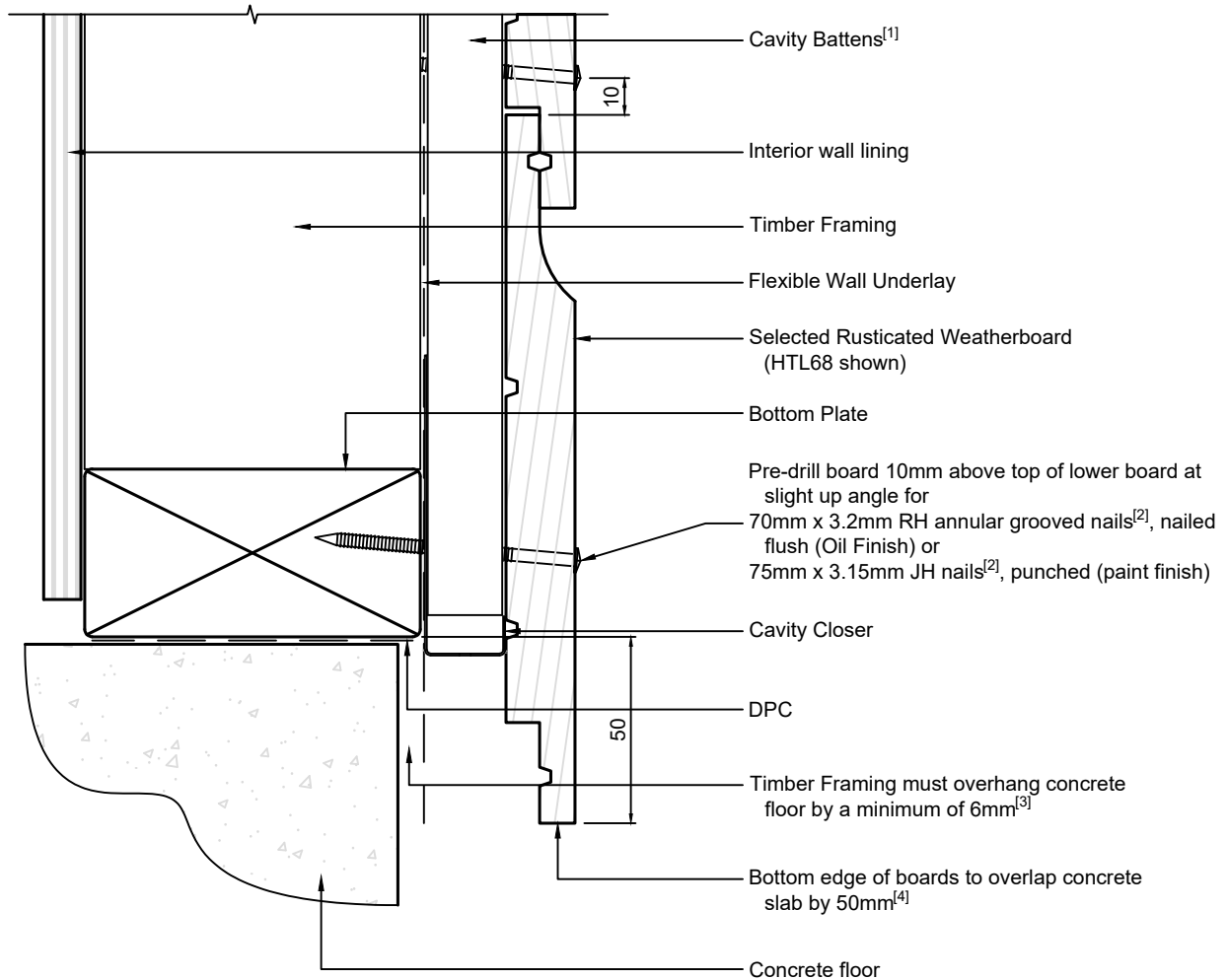
Ph: 03 544 6006  
 Email: sales@htlgroup.co.nz  
 Website: www.htlgroup.co.nz  
 48 Beach Road, Richmond, Nelson 7020  
 P O Box 3050, Richmond, Nelson 7050

**Rusticated Weatherboards**  
**20mm Cavity Batten - Flexible Underlay**  
**Bottom of Wall detail**  
**Timber Floor**

1:2 @ A4	2021/01/26
Drawing No. 3-4-211	

**Note:**

- 1/ Cavity Battens are Horizontal Castellated timber battens (HTLBH20) and plain vertical battens (HTLBV20), temporarily fixed with cladding nails
- 2/ Cladding Fixings to comply with E2/AS1 para. 9.4.3.1 & Tables 20 & 24
- 3/ See E2/AS1 para. 9.1.3.3(c)
- 4/ See E2/AS1 para. 9.1.3.3(b)



Ph: 03 544 6006  
 Email: sales@htlgroup.co.nz  
 Website: www.htlgroup.co.nz  
 48 Beach Road, Richmond, Nelson 7020  
 P O Box 3050, Richmond, Nelson 7050

**Rusticated Weatherboards**  
**20mm Cavity Batten - Flexible Underlay**  
**Bottom of Wall detail**  
**Concrete Floor**

1:2 @ A4

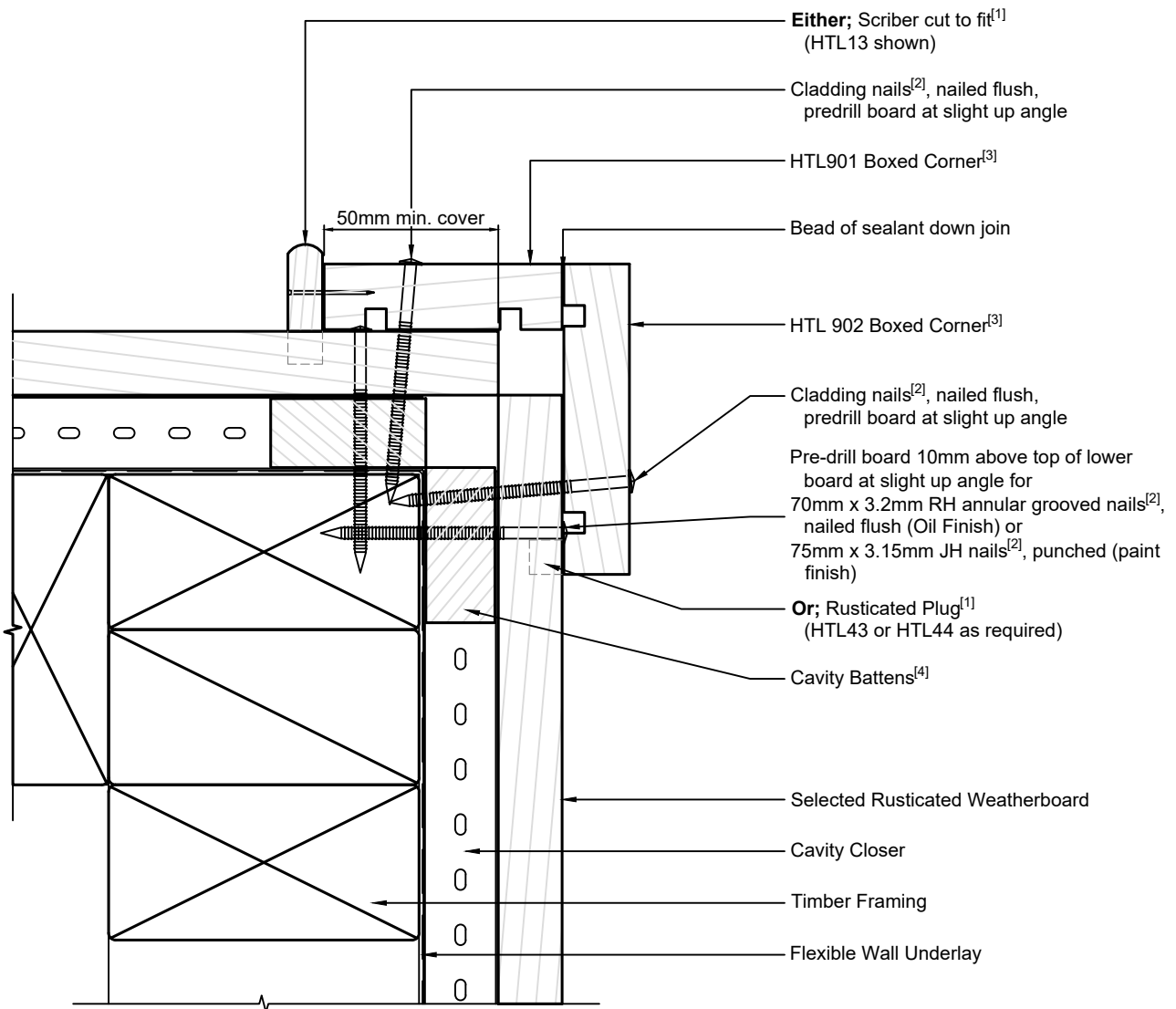
2021/01/26

Drawing No.  
 3-4-221



**Note:**

- 1/ Either Scriber or Plug to comply with E2/AS1 para. 9.4.4.4(a)(ii) & fig. 78(c)
- 2/ Cladding Fixings to comply with E2/AS1 para. 9.4.3.1 & Tables 20 & 24
- 3/ The minimum cover of Boxed Corner boards to comply with E2/AS1 para. 9.4.4.4(a)(ii) & fig. 78(c)
- 4/ Cavity Battens are Horizontal Castellated timber battens (HTLBH20) and plain vertical battens (HTLBV20), temporarily fixed with cladding nails



Ph: 03 544 6006  
 Email: sales@htlgroup.co.nz  
 Website: www.htlgroup.co.nz  
 48 Beach Road, Richmond, Nelson 7020  
 P O Box 3050, Richmond, Nelson 7050

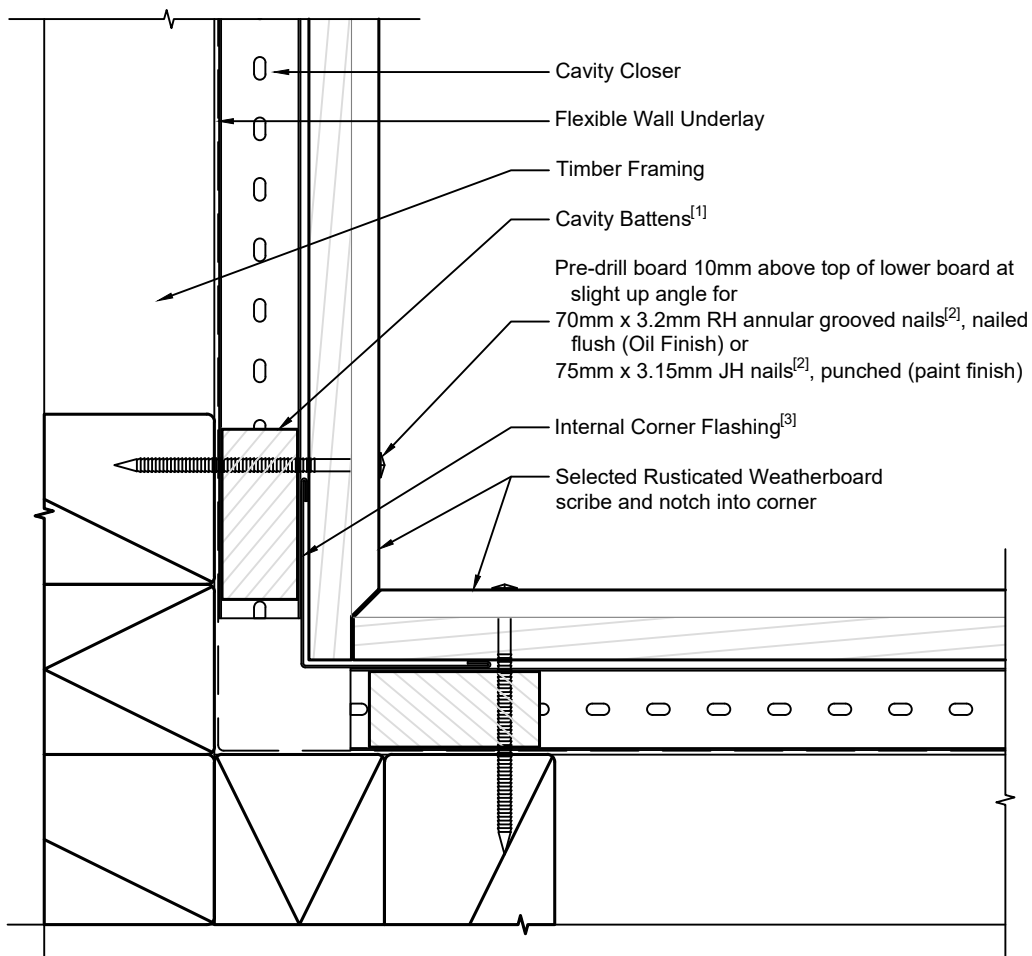
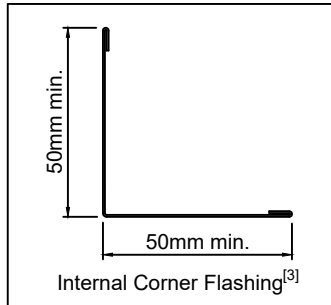
**Rusticated Weatherboards**  
**20mm Cavity Batten - Flexible Underlay**  
**External Boxed Corner detail**

1:2 @ A4    2021/01/26

Drawing No.  
 3-4-301

**Note:**

- 1/ Cavity Battens are Horizontal Castellated timber battens (HTLBH20) and plain vertical battens (HTLBV20), temporarily fixed with cladding nails
- 2/ Cladding Fixings to comply with E2/AS1 para. 9.4.3.1 & Tables 20 & 24
- 3/ Corner Flashing dimensions to comply with E2/AS1 para. 9.4.4.5 & Table 7 & fig. 79(c)



Option A



Ph: 03 544 6006  
 Email: sales@htlgroup.co.nz  
 Website: www.htlgroup.co.nz  
 48 Beach Road, Richmond, Nelson 7020  
 P O Box 3050, Richmond, Nelson 7050

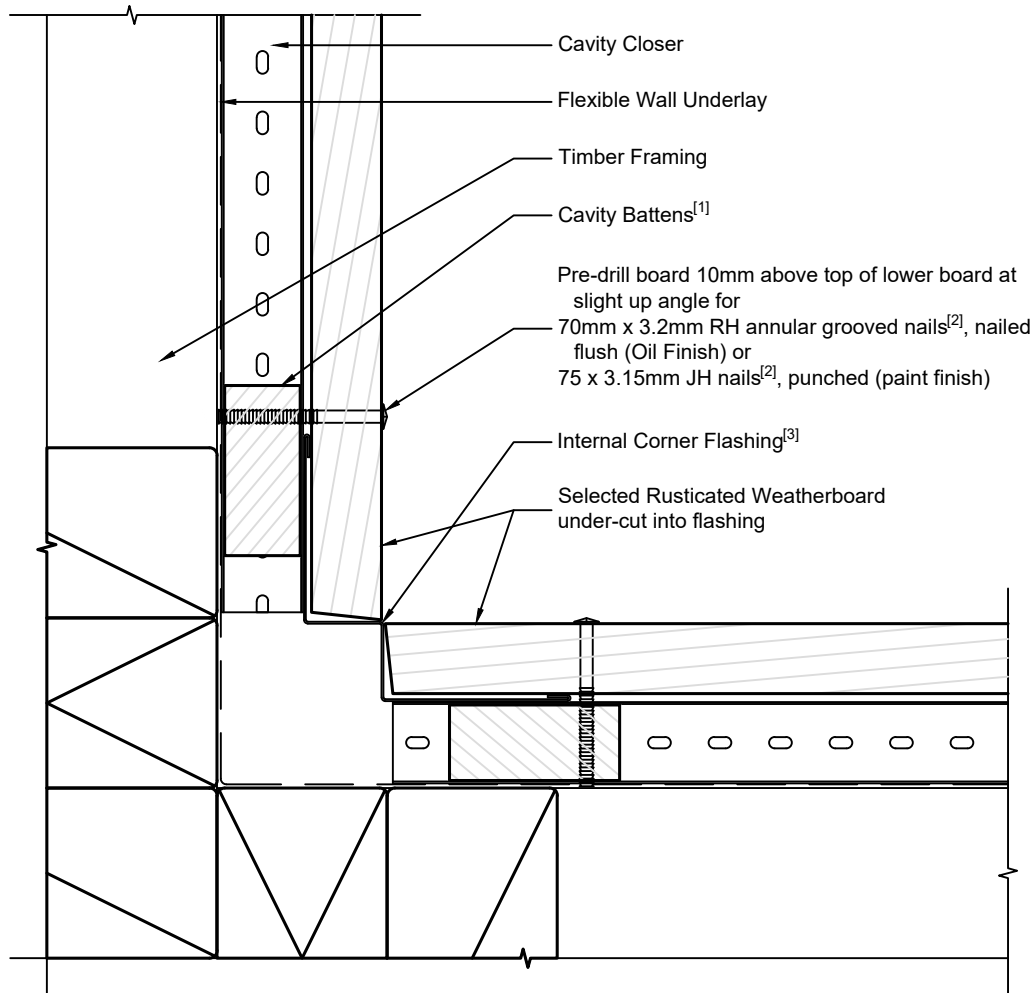
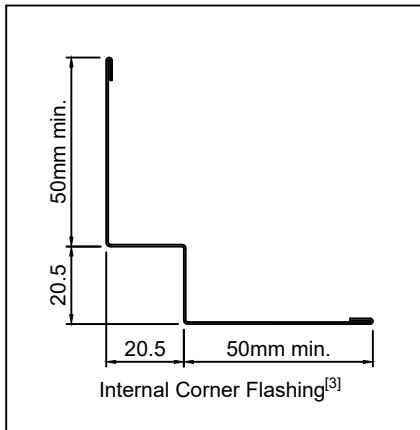
**Rusticated Weatherboards**  
**20mm Cavity Batten - Flexible Underlay**  
**Internal Corner detail**  
**Option A**

1:2 @ A4 2021/01/26

Drawing No.  
3-4-351

**Note:**

- 1/ Cavity Battens are Horizontal Castellated timber battens (HTLBH20) and plain vertical battens (HTLBV20), temporarily fixed with cladding nails
- 2/ Cladding Fixings to comply with E2/AS1 para. 9.4.3.1 & Tables 20 & 24
- 3/ Corner Flashing dimensions to comply with E2/AS1 para. 9.4.4.5 & Table 7 & fig.79(d)



Option B



Ph: 03 544 6006  
 Email: sales@htlgroup.co.nz  
 Website: www.htlgroup.co.nz  
 48 Beach Road, Richmond, Nelson 7020  
 P O Box 3050, Richmond, Nelson 7050

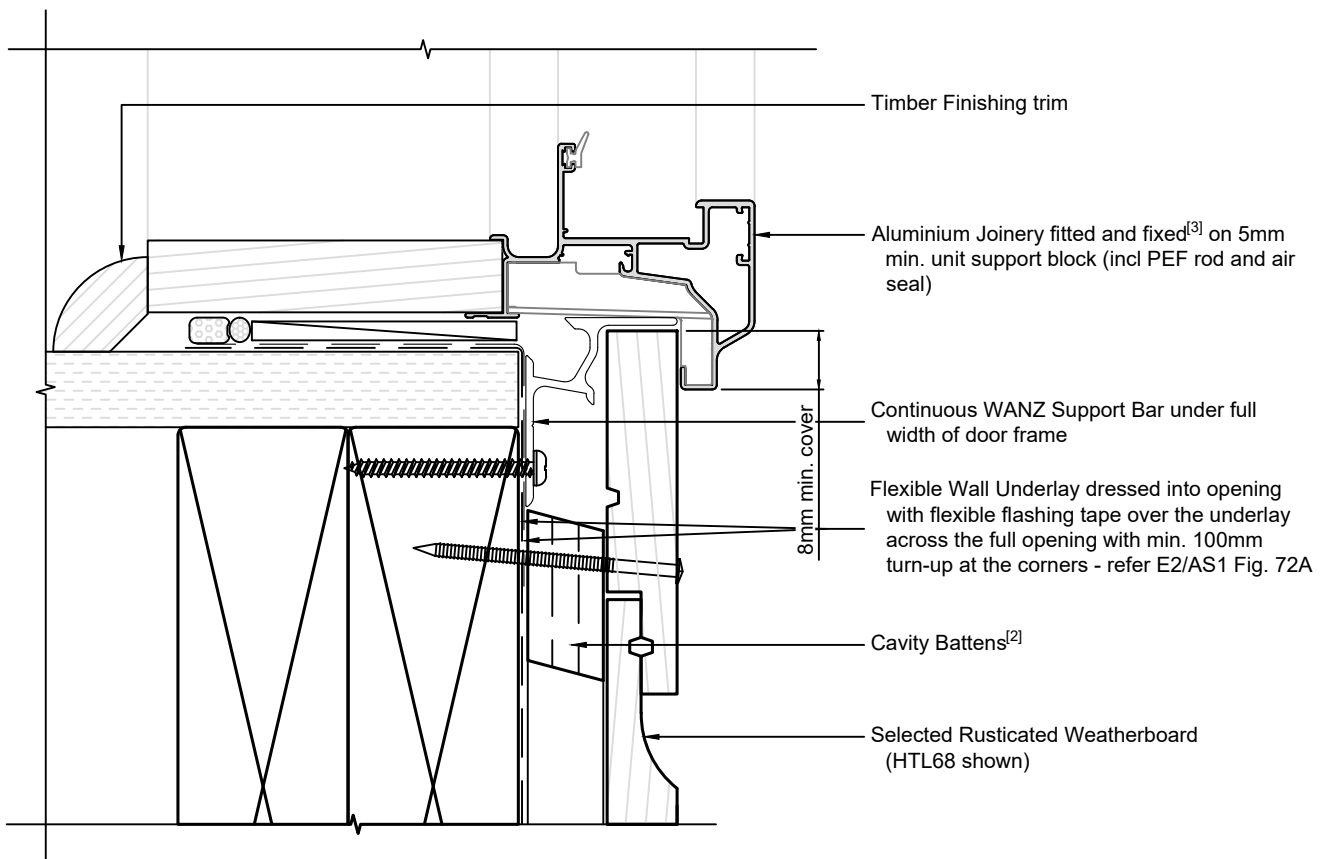
**Rusticated Weatherboards**  
**20mm Cavity Batten - Flexible Underlay**  
**Internal Corner detail**  
**Option B**

1:2 @ A4 2019/02/19

Drawing No.  
 3-4-352

**Note:**

- 1/ To comply similar to E2/AS1, Fig. 86
- 2/ Cavity Battens are Horizontal Castellated timber battens (HTLBH20) and plain vertical battens (HTLBV20), temporarily fixed with cladding nails
- 3/ Joinery Fixing to comply with E2/AS1 para. 9.1.10.8 - pairs of 75mm x 3.15mm galv. JH nails or 8g x 65mm s/s screws, through reveals into framing at max 150mm from corners and at 450mm centres along sill
- 4/ Cladding Fixings to comply with E2/AS1 para. 9.4.3.1 & Tables 20 & 24



Ph: 03 544 6006  
Email: sales@htlgroup.co.nz  
Website: www.htlgroup.co.nz  
48 Beach Road, Richmond, Nelson 7020  
P O Box 3050, Richmond, Nelson 7050

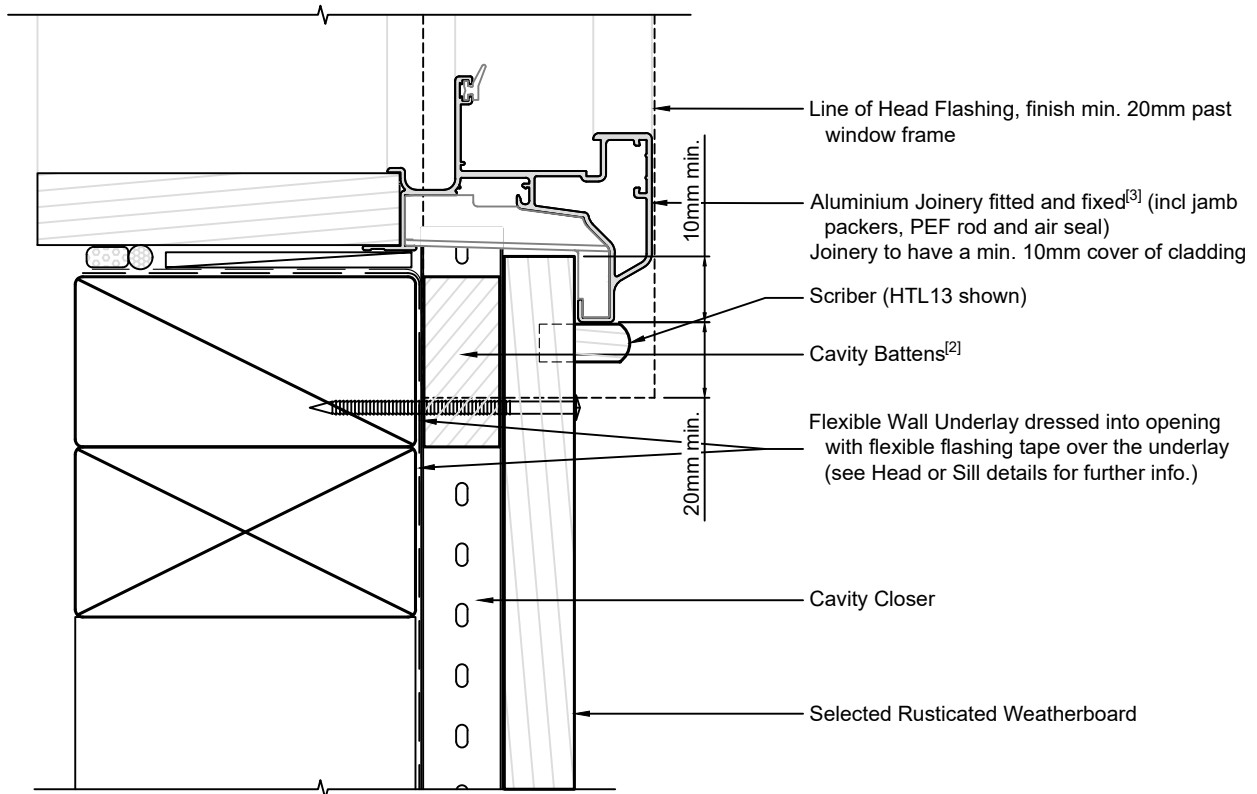
**Rusticated Weatherboards**  
**20mm Cavity Batten - Flexible Underlay**  
**Door Sill detail**

1:2 @ A4    2021/01/26

Drawing No.  
3-4-501

**Note:**

- 1/ To comply similar to E2/AS1, Fig. 86
- 2/ Cavity Battens are Horizontal Castellated timber battens (HTLBH20) and plain vertical battens (HTLBV20), temporarily fixed with cladding nails
- 3/ Joinery Fixing to comply with E2/AS1 para. 9.1.10.8 - pairs of 75mm x 3.15mm galv. JH nails or 8g x 65mm s/s screws, through reveals into framing at max 150mm from corners and at 450mm centres along sill
- 4/ Cladding Fixings to comply with E2/AS1 para. 9.4.3.1 & Tables 20 & 24



Ph: 03 544 6006  
Email: sales@htlgroup.co.nz  
Website: www.htlgroup.co.nz  
48 Beach Road, Richmond, Nelson 7020  
P O Box 3050, Richmond, Nelson 7050

**Rusticated Weatherboards**  
**20mm Cavity Batten - Flexible Underlay**  
**Door Jamb detail**

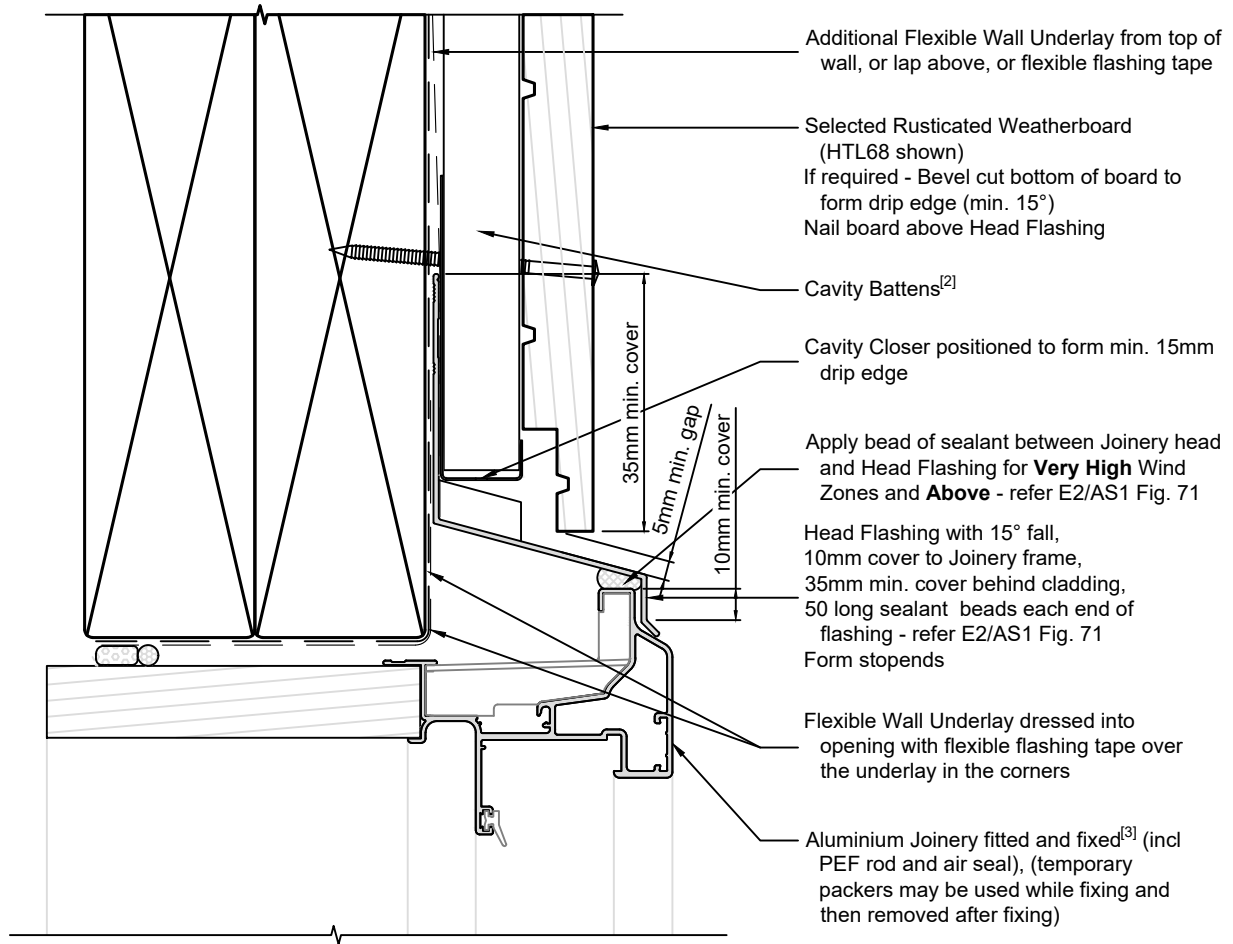
1:2 @ A4

2021/01/26

Drawing No.  
3-4-502

**Note:**

- 1/ To comply similar to E2/AS1, Fig. 86
- 2/ Cavity Battens are Horizontal Castellated timber battens (HTLBH20) and plain vertical battens (HTLBV20), temporarily fixed with cladding nails
- 3/ Joinery Fixing to comply with E2/AS1 para. 9.1.10.8 - pairs of 75mm x 3.15mm galv. JH nails or 8g x 65mm s/s screws, through reveals into framing at max 150mm from corners and at 450mm centres along sill
- 4/ Cladding Fixings to comply with E2/AS1 para. 9.4.3.1 & Tables 20 & 24



Ph: 03 544 6006  
Email: sales@htlgroup.co.nz  
Website: www.htlgroup.co.nz  
48 Beach Road, Richmond, Nelson 7020  
P O Box 3050, Richmond, Nelson 7050

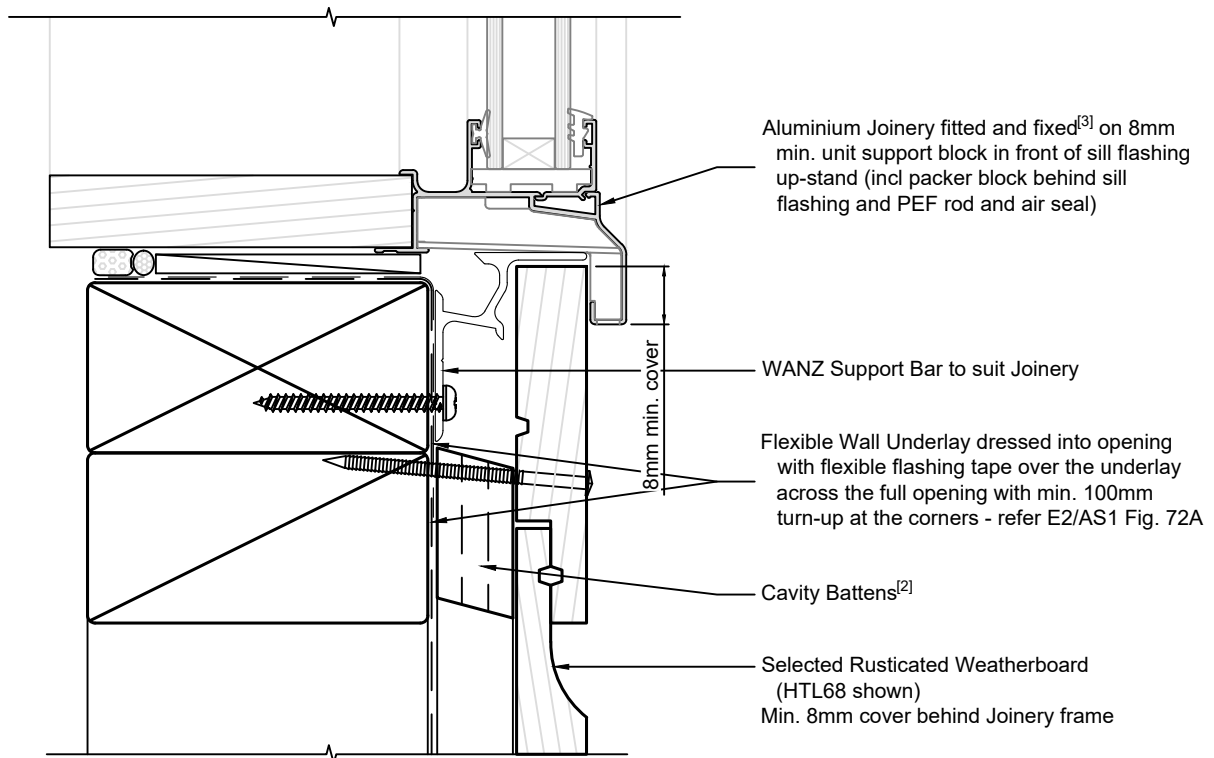
**Rusticated Weatherboards**  
**20mm Cavity Batten - Flexible Underlay**  
**Door Head detail**

1:2 @ A4 2021/01/26

Drawing No.  
3-4-503

**Note:**

- 1/ To comply similar to E2/AS1, Fig. 86
- 2/ Cavity Battens are Horizontal Castellated timber battens (HTLBH20) and plain vertical battens (HTLBV20), temporarily fixed with cladding nails
- 3/ Joinery Fixing to comply with E2/AS1 para. 9.1.10.8 - pairs of 75mm x 3.15mm galv. JH nails or 8g x 65mm s/s screws, through reveals into framing at max 150mm from corners and at 450mm centres along sill
- 4/ Cladding Fixings to comply with E2/AS1 para. 9.4.3.1 & Tables 20 & 24



Ph: 03 544 6006  
Email: sales@htlgroup.co.nz  
Website: www.htlgroup.co.nz  
48 Beach Road, Richmond, Nelson 7020  
P O Box 3050, Richmond, Nelson 7050

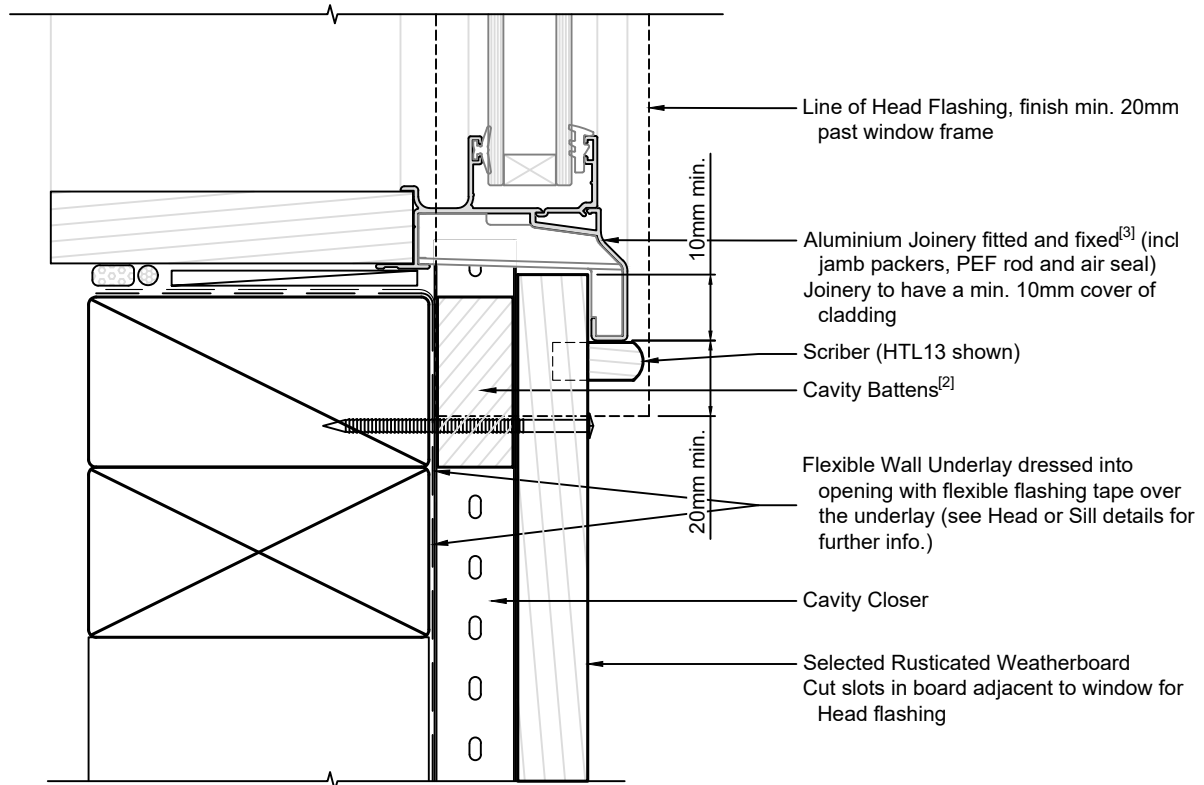
**Rusticated Weatherboards**  
**20mm Cavity Batten - Flexible Underlay**  
**Window Sill detail**

1:2 @ A4 | 2021/01/26

Drawing No.  
3-4-601

**Note:**

- 1/ To comply similar to E2/AS1, Fig. 86
- 2/ Cavity Battens are Horizontal Castellated timber battens (HTLBH20) and plain vertical battens (HTLBV20), temporarily fixed with cladding nails
- 3/ Joinery Fixing to comply with E2/AS1 para. 9.1.10.8 - pairs of 75mm x 3.15mm galv. JH nails or 8g x 65mm s/s screws, through reveals into framing at max 150mm from corners and at 450mm centres along sill
- 4/ Cladding Fixings to comply with E2/AS1 para. 9.4.3.1 & Tables 20 & 24



Ph: 03 544 6006  
Email: sales@htlgroup.co.nz  
Website: www.htlgroup.co.nz  
48 Beach Road, Richmond, Nelson 7020  
P O Box 3050, Richmond, Nelson 7050

**Rusticated Weatherboards**  
**20mm Cavity Batten - Flexible Underlay**  
**Window Jamb detail**

1:2 @ A4

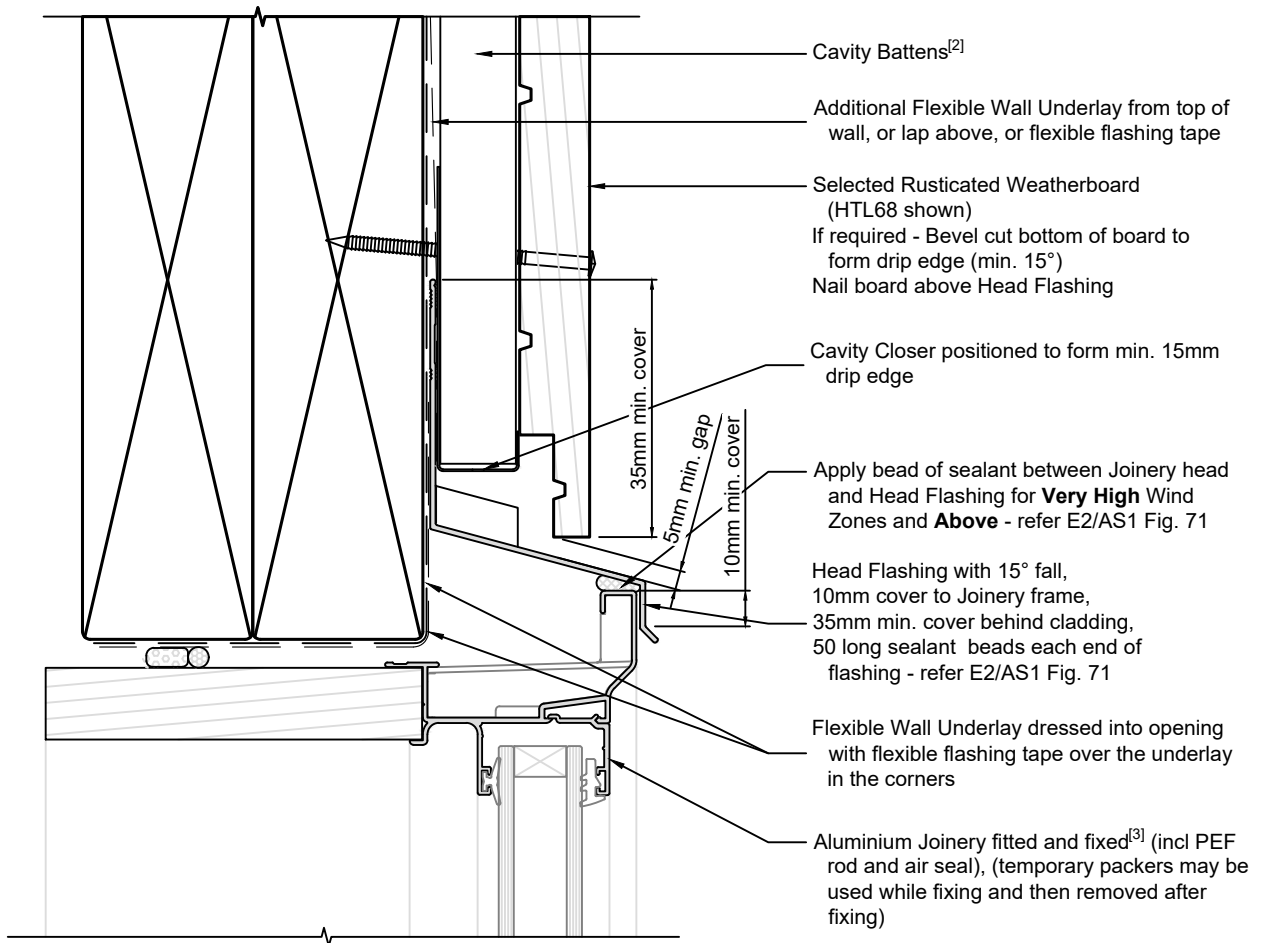
2021/01/26

Drawing No.  
3-4-602



**Note:**

- 1/ To comply similar to E2/AS1, Fig. 86
- 2/ Cavity Battens are Horizontal Castellated timber battens (HTLBH20) and plain vertical battens (HTLBV20), temporarily fixed with cladding nails
- 3/ Joinery Fixing to comply with E2/AS1 para. 9.1.10.8 - pairs of 75mm x 3.15mm galv. JH nails or 8g x 65mm s/s screws, through reveals into framing at max 150mm from corners and at 450mm centres along sill
- 4/ Cladding Fixings to comply with E2/AS1 para. 9.4.3.1 & Tables 20 & 24



Ph: 03 544 6006  
 Email: sales@htlgroup.co.nz  
 Website: www.htlgroup.co.nz  
 48 Beach Road, Richmond, Nelson 7020  
 P O Box 3050, Richmond, Nelson 7050

**Rusticated Weatherboards**  
**20mm Cavity Batten - Flexible Underlay**  
**Window Head detail**

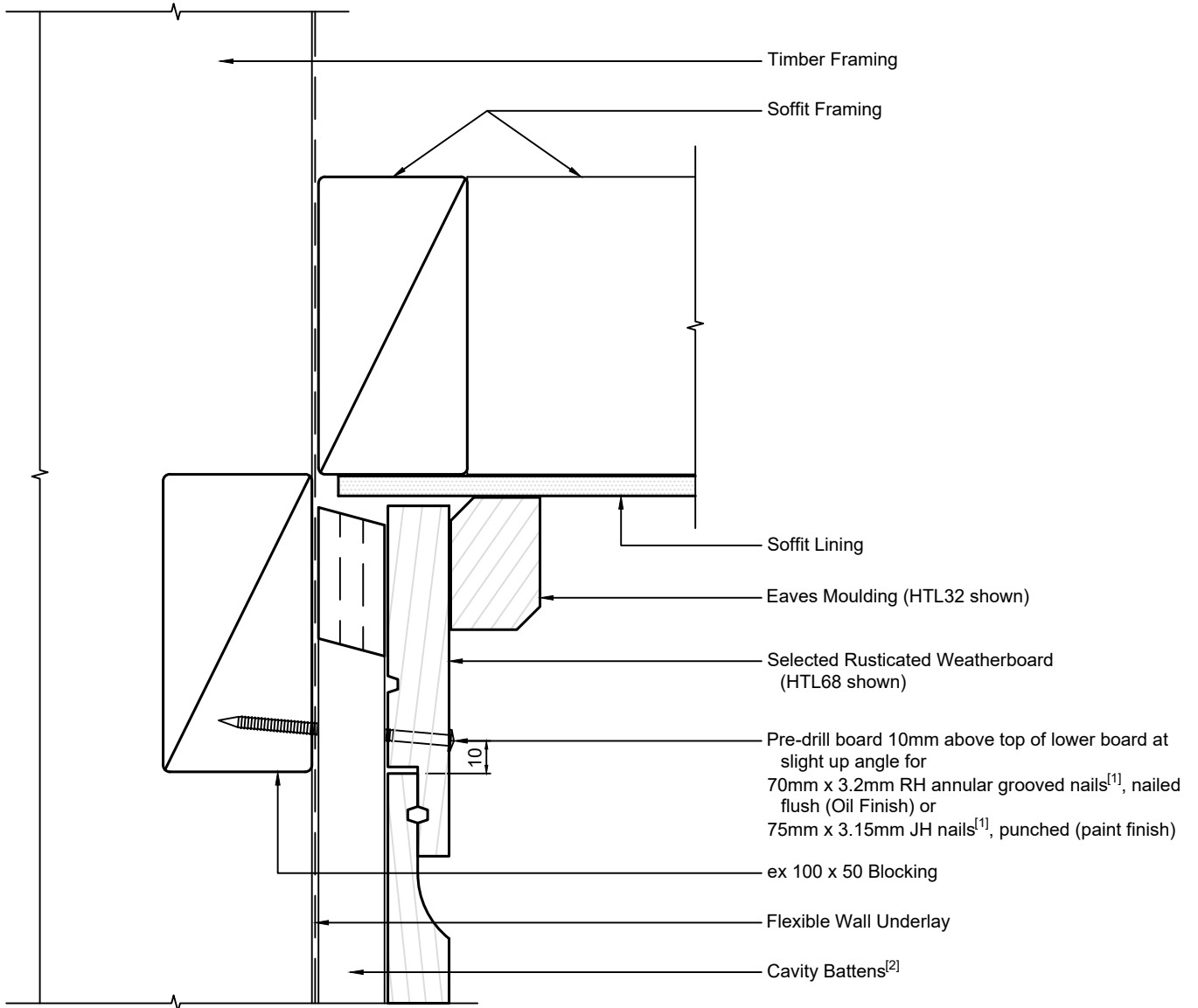
1:2 @ A4    2021/01/26

Drawing No.  
 3-4-603

**Note:**

1/ Cladding Fixings to comply with E2/AS1 para. 9.4.3.1 & Tables 20 & 24

2/ Cavity Battens are Horizontal Castellated timber battens (HTLBH20) and plain vertical battens (HTLBV20), temporarily fixed with cladding nails



Ph: 03 544 6006  
 Email: sales@htlgroup.co.nz  
 Website: www.htlgroup.co.nz  
 48 Beach Road, Richmond, Nelson 7020  
 P O Box 3050, Richmond, Nelson 7050

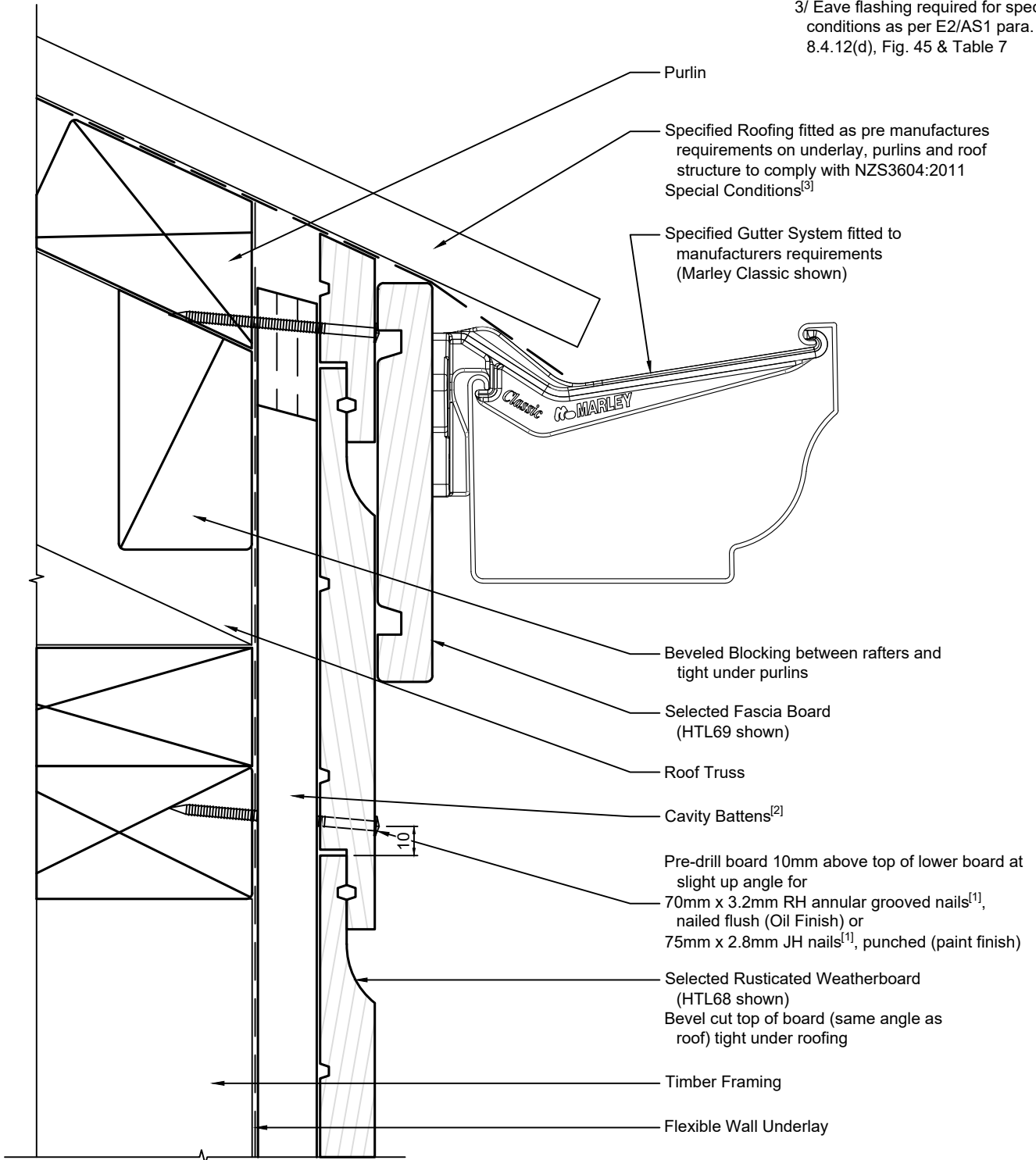
**Rusticated Weatherboards**  
**20mm Cavity Batten - Flexible Underlay**  
**Soffit detail**

1:2 @ A4 | 2021/01/26

Drawing No.  
 3-4-801

**Note:**

- 1/ Cladding Fixings to comply with E2/AS1 para. 9.4.3.1 & Tables 20 & 24
- 2/ Cavity Battens are Horizontal Castellated timber battens (HTLBH20) and plain vertical battens (HTLBV20), temporarily fixed with cladding nails
- 3/ Eave flashing required for special conditions as per E2/AS1 para. 8.4.12(d), Fig. 45 & Table 7

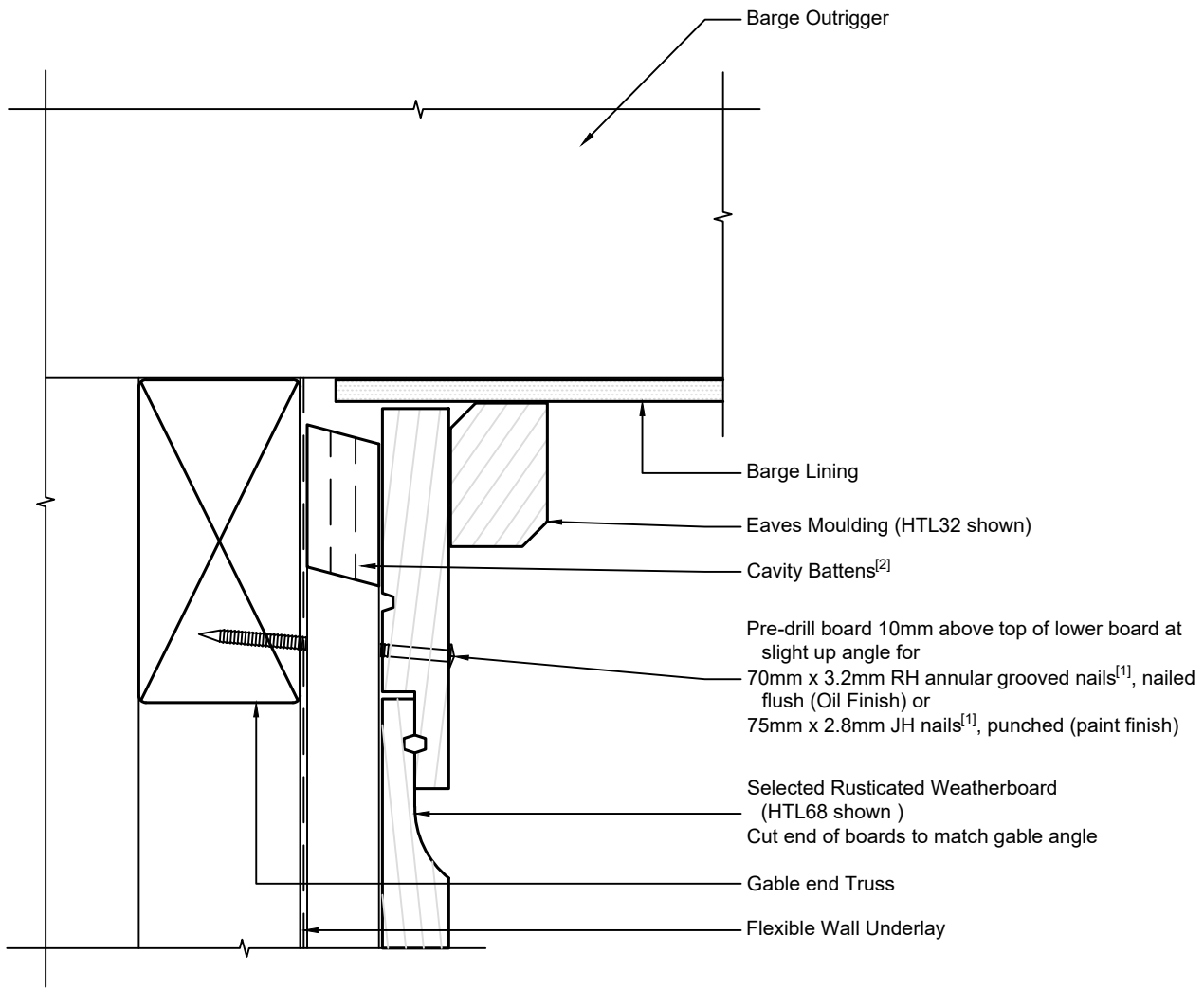


Ph: 03 544 6006  
 Email: sales@htlgroup.co.nz  
 Website: www.htlgroup.co.nz  
 48 Beach Road, Richmond, Nelson 7020  
 P O Box 3050, Richmond, Nelson 7050

**Rusticated Weatherboards  
 20mm Cavity Batten - Flexible Underlay  
 Flush Eave detail**

1:2 @ A4 | 2021/01/26  
 Drawing No. 3-4-802

**Note:**  
 1/ Cladding Fixings to comply with E2/AS1 para. 9.4.3.1 & Tables 20 & 24  
 2/ Cavity Battens are Horizontal Castellated timber battens (HTLBH20) and plain vertical battens (HTLBV20), temporarily fixed with cladding nails

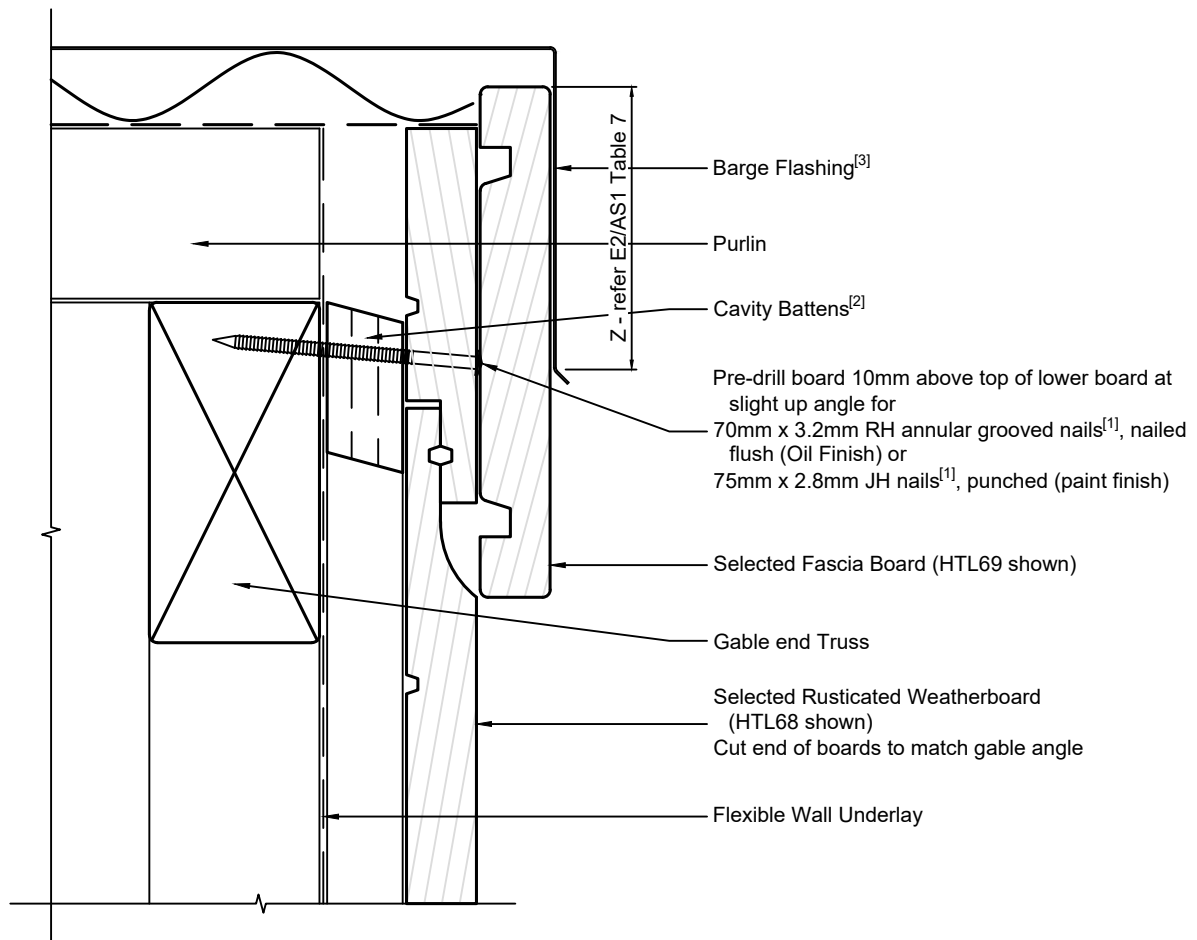


Ph: 03 544 6006  
 Email: sales@htlgroup.co.nz  
 Website: www.htlgroup.co.nz  
 48 Beach Road, Richmond, Nelson 7020  
 P O Box 3050, Richmond, Nelson 7050

**Rusticated Weatherboards**  
**20mm Cavity Batten - Flexible Underlay**  
**Barge Soffit detail**

1:2 @ A4	2021/01/26
Drawing No. 3-4-851	

- Note:**
- 1/ Cladding Fixings to comply with E2/AS1 para. 9.4.3.1 & Tables 20 & 24
  - 2/ Cavity Battens are Horizontal Castellated timber battens (HTLBH20) and plain vertical battens (HTLBV20), temporarily fixed with cladding nails
  - 3/ Barge flashing to comply with E2/AS1 para. 8.4.12(f), Fig. 47 & Table 7



Ph: 03 544 6006  
 Email: sales@htlgroup.co.nz  
 Website: www.htlgroup.co.nz  
 48 Beach Road, Richmond, Nelson 7020  
 P O Box 3050, Richmond, Nelson 7050

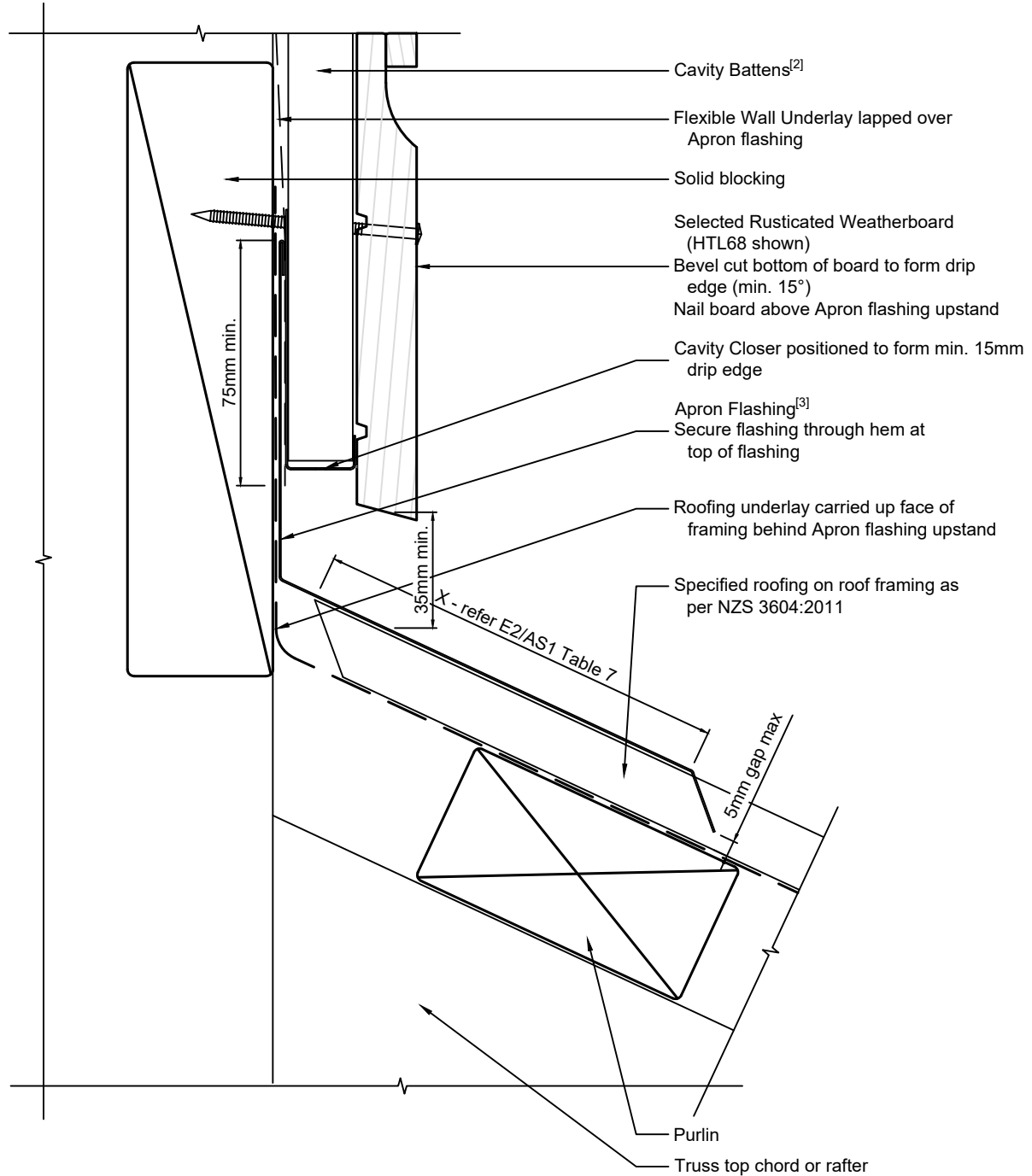
**Rusticated Weatherboards**  
**20mm Cavity Batten - Flexible Underlay**  
**Flush Barge detail**

1:2 @ A4 | 2021/01/26

Drawing No.  
3-4-852

**Note:**

- 1/ Cladding Fixings to comply with E2/AS1 para. 9.4.3.1 & Tables 20 & 24
- 2/ Cavity Battens are Horizontal Castellated timber battens (HTLBH20) and plain vertical battens (HTLBV20), temporarily fixed with cladding nails
- 3/ Apron flashing to comply with E2/AS1 para. 4.6.1.1, Fig. 7 & Table 7



Ph: 03 544 6006  
 Email: sales@htlgroup.co.nz  
 Website: www.htlgroup.co.nz  
 48 Beach Road, Richmond, Nelson 7020  
 P O Box 3050, Richmond, Nelson 7050

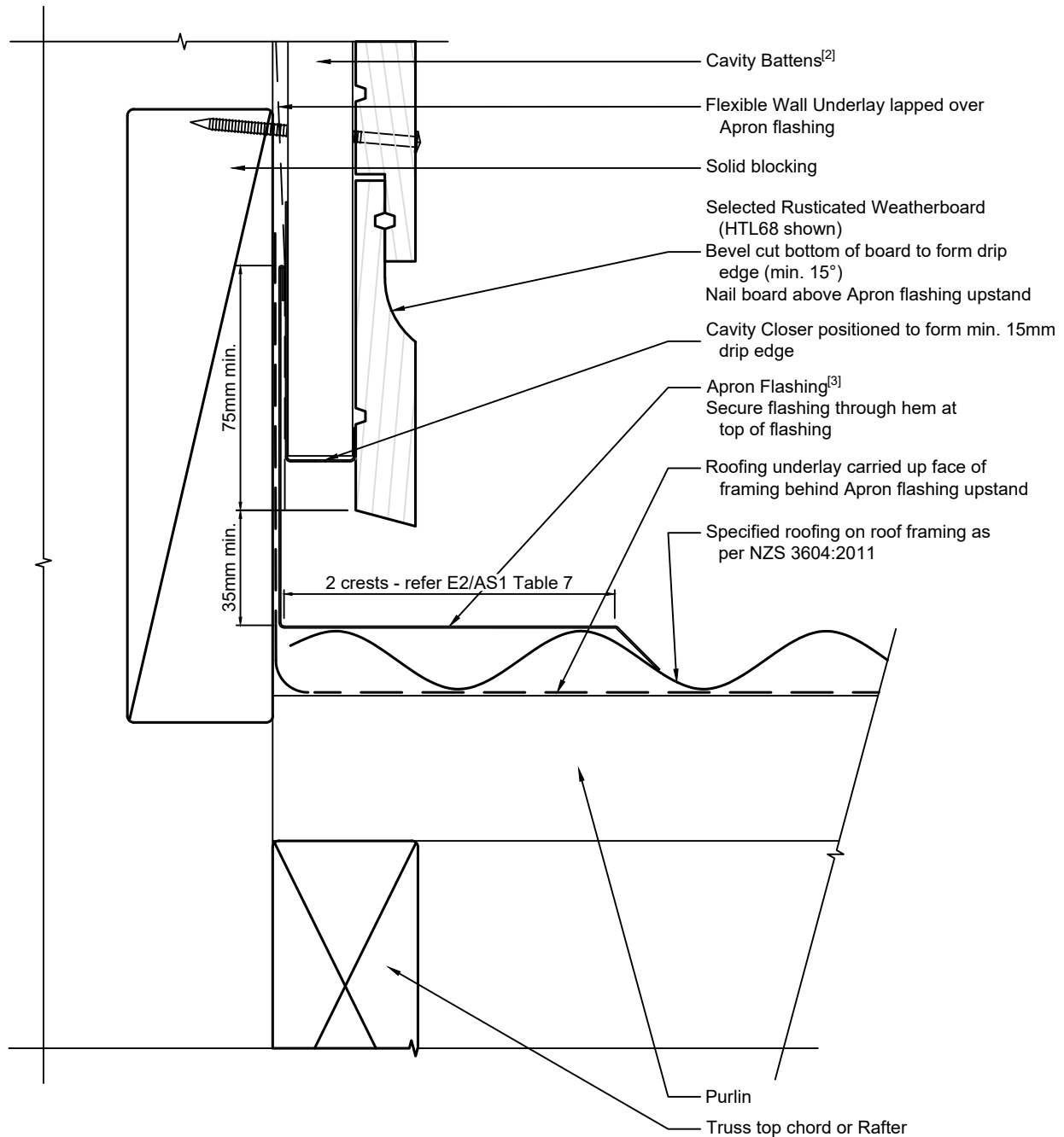
**Rusticated Weatherboards**  
**20mm Cavity Batten - Flexible Underlay**  
**Wall to Roof detail**  
**Top of roofing**

1:2 @ A4 | 2021/01/26

Drawing No.  
 3-4-901

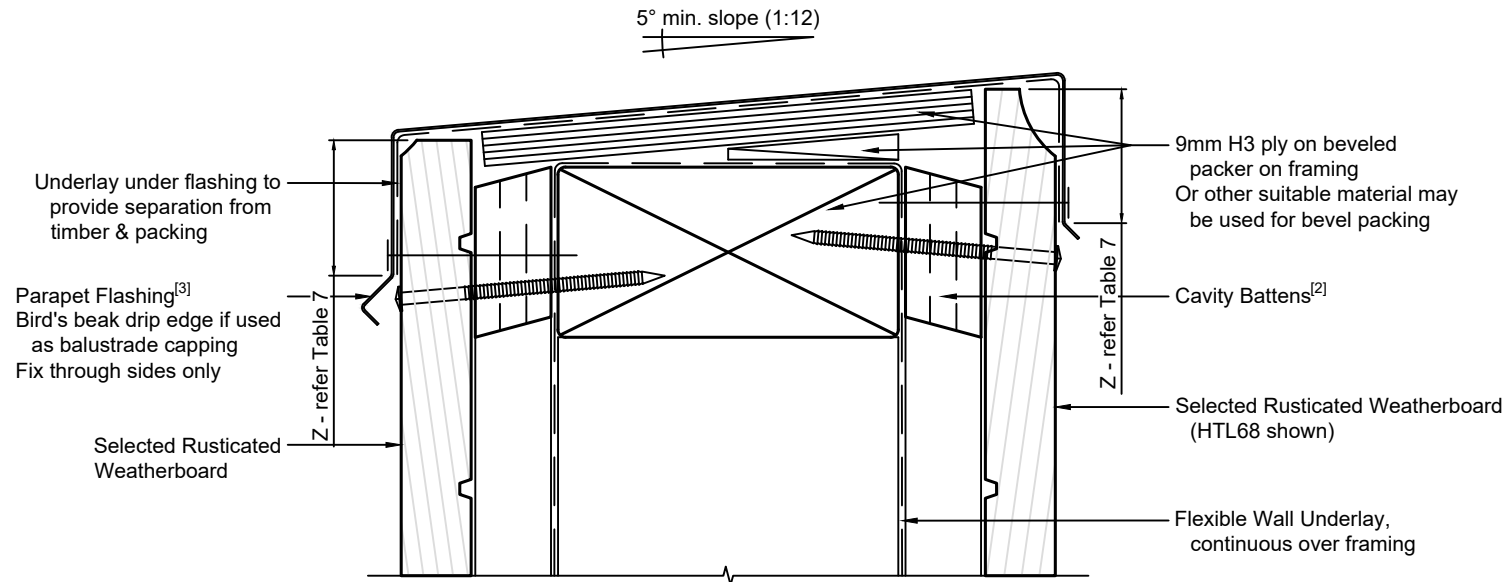
**Note:**

- 1/ Cladding Fixings to comply with E2/AS1 para. 9.4.3.1 & Tables 20 & 24
- 2/ Cavity Battens are Horizontal Castellated timber battens (HTLBH20) and plain vertical battens (HTLBV20), temporarily fixed with cladding nails
- 3/ Apron flashing to comply with E2/AS1 para. 4.6.1.1, Fig. 7 & Table 7



	Ph: 03 544 6006 Email: sales@htlgroup.co.nz Website: www.htlgroup.co.nz 48 Beach Road, Richmond, Nelson 7020 P O Box 3050, Richmond, Nelson 7050	<b>Rusticated Weatherboards</b> <b>20mm Cavity Batten - Flexible Underlay</b> <b>Wall to Roof detail</b> <b>Side of roofing</b>		1:2 @ A4	2021/01/26
				Drawing No. 3-4-902	

- Note:**
- 1/ Cladding Fixings to comply with E2/AS1 para. 9.4.3.1 & Tables 20 & 24
  - 2/ Cavity Battens are Horizontal Castelled timber battens (HTLBH20) and plain vertical battens (HTLBV20), temporarily fixed with cladding nails
  - 3/ Parapet flashing to comply with E2/AS1 para. 6.0, Fig. 10 & Table 7



Ph: 03 544 6006  
 Email: sales@htlgroup.co.nz  
 Website: www.htlgroup.co.nz  
 48 Beach Road, Richmond, Nelson 7020  
 P O Box 3050, Richmond, Nelson 7050

**Rusticated Weatherboards**  
**20mm Cavity Batten - Flexible Underlay**  
**Parapet detail**

1:2 @ A4 | 2021/01/26

Drawing No.  
3-4-911