

DOMESTIC, RESIDENTIAL & NON RESIDENTIAL GLASS INFILL BALUSTRADES COVERING OCCUPANCIES A, B, C3 & E OF TABLE AS/NZS 1170.1:2002 UP TO A MAXIMUM HEIGHT OF 2000MM ABOVE THE TOP FIXING.

BALUSTRADE GLASS - 10MM & 12MM TOUGHENED OR 12MM TOUGHENED LAMINATE.

MAXIMUM POST CENTERS WITH OR WITHOUT HANDRAIL

LAMINATE INTERLAYER NOT INCLUDED IN GLASS THICKNESS.  
 POOL FENCING - 12MM TOUGHENED, OR 12MM TOUGHENED LAMINATE TO A MAXIMUM HEIGHT OF 2000MM ABOVE GROUND LEVEL

INTERIOR BALUSTRADE

REFER OPUS TECHNICAL DRAWING OB100/24

EXTERIOR BALUSTRADE

REFER OPUS TECHNICAL DRAWING OB100/24

POOL FENCE MINIMUM HEIGHT OF 1200MM ABOVE G.L  
 PLEASE NOTE:  
 POOL FENCING SUBJECT TO ULS LOADS EXCEEDING 1.76kPa TO 2.1kPa POST TO BE INSTALLED AT -

REFER OPUS TECHNICAL DRAWING OB100/24

COMMERCIAL AND OFFICES WITHOUT CROWDING, RETAIL, RESTAURANTS & BARS COVERING OCCUPANCIES C1, C2 & D OF TABLE AS/NZS 1170.1:2002 UP TO A MAXIMUM HEIGHT OF 2000MM ABOVE THE TOP FIXING.

BALUSTRADE GLASS - 15MM TOUGHENED OR 16MM TOUGHENED LAMINATE.

MAXIMUM POST CENTERS WITH OR WITHOUT OPTIONAL HANDRAIL

LAMINATE INTERLAYER NOT INCLUDED IN GLASS THICKNESS.

INTERIOR BALUSTRADE  
 EXTERIOR BALUSTRADE

REFER OPUS TECHNICAL DRAWING OB100/24  
 REFER OPUS TECHNICAL DRAWING OB100/24

**NOTES:**

CALCULATIONS ARE BASED ON 25MPa CONCRETE. SUITABILITY IS THE RESPONSIBILITY OF OTHERS AND AN ENGINEERS REPORT IS RECOMMENDED.

ALL FIXING HARDWARE TO BE GRADE 316 STAINLESS STEEL.

DURATEC POWDERCOAT OR 25 MICRON ANODISED FINISH IS RECOMMENDED FOR ALL INSTALLATIONS ESPECIALLY WITHIN COASTAL AREAS.

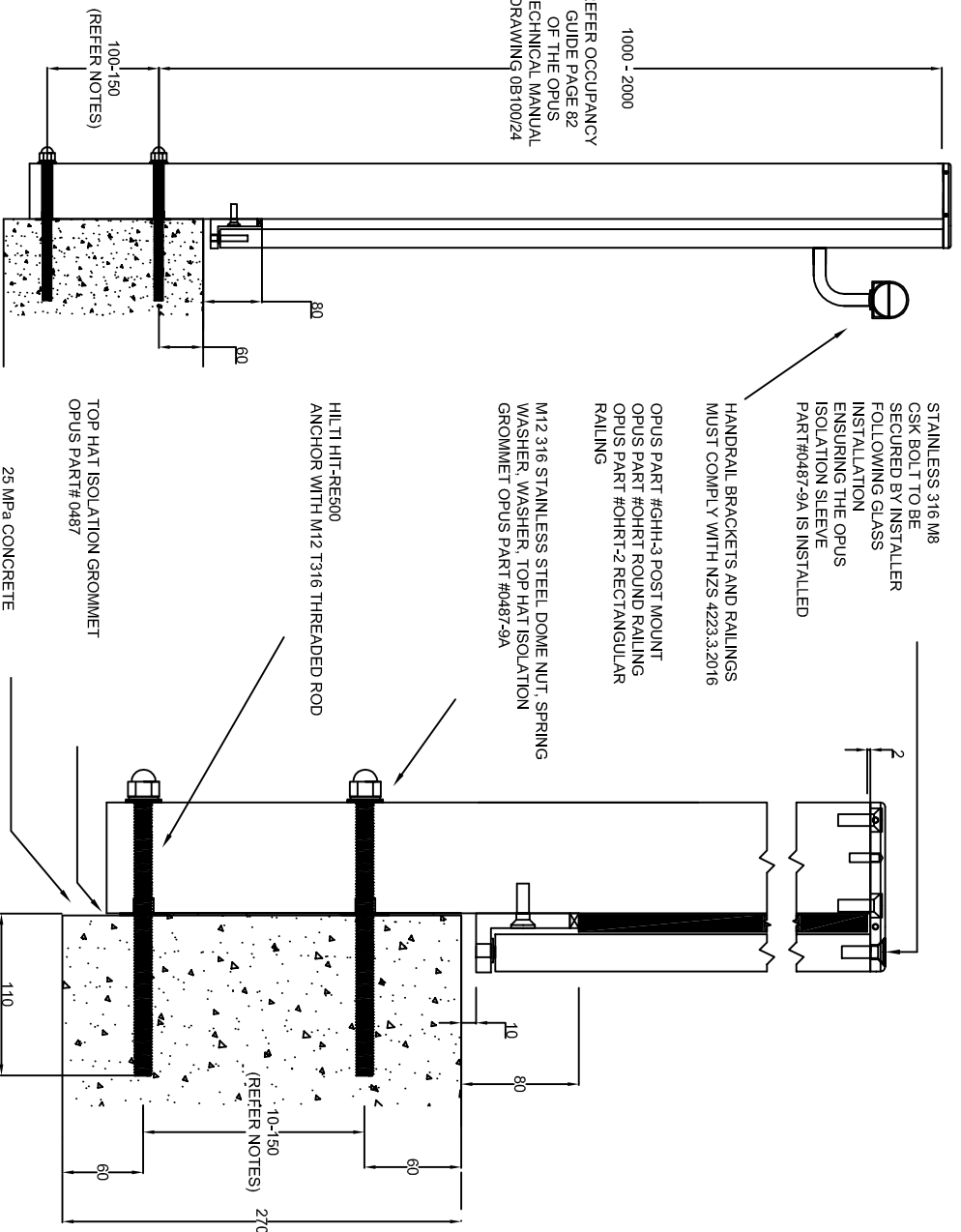
THIS PROPRIETARY BALUSTRADE SYSTEM HAS BEEN DESIGNED IN CONJUNCTION WITH THE GANZ BALUSTRADE DESIGN TABLE SB-3 AND COMPLES WITH THE NEW ZEALAND BUILDING CODE CLAUSES B1 STRUCTURAL, B2 DURABILITY, F2 HAZARDOUS BUILDING MATERIALS AND F4 SAFETY FROM FALLING THIRD ADDITION. SUBJECT TO:

- ALL PRODUCTS MEETING THEIR PERFORMANCE SPECIFICATION.
- INSTALLATIONS MUST BE IN ACCORDANCE WITH THE INTENT OF THIS DRAWING AND COMPLY WITH NZS 4223.3:2016 REQUIREMENTS

THE GANZ TABLE SB-3 ALLOWS A MAXIMUM ULS OF 2.1kPa AND SLS OF 1.5kPa DESIGN WIND PRESSURE FOR THE LOCATION AND IF THE SITE DESIGN WIND PRESSURE EXCEEDS THESE, SPECIFIC DESIGN IS REQUIRED TO DETERMINE THE GLASS THICKNESS.

THE DESIGN HAS BEEN VERIFIED BY AN INDEPENDENT ENGINEERING CONSULTANT AND A PRODUCER STATEMENT PS1 DESIGN IS AVAILABLE.

REFER OCCUPANCY GUIDE PAGE 82 OF THE OPUS TECHNICAL MANUAL DRAWING OB100/24



STAINLESS 316 M8 CSK BOLT TO BE SECURED BY INSTALLER FOLLOWING GLASS INSTALLATION ENSURING THE OPUS ISOLATION SLEEVE PART#0487-9A IS INSTALLED

HANDRAIL BRACKETS AND RAILINGS MUST COMPLY WITH NZS 4223.3:2016

OPUS PART #GHH-3 POST MOUNT  
 OPUS PART #OHR1 ROUND RAILING  
 OPUS PART #OHR2 RECTANGULAR RAILING

M12 316 STAINLESS STEEL DOME NUT, SPRING WASHER, WASHER, TOP HAT ISOLATION GROMMET OPUS PART #0487-9A

HILTI HIT-RE500 ANCHOR WITH M12 T316 THREADED ROD

TOP HAT ISOLATION GROMMET OPUS PART# 0487

25 MPa CONCRETE

PLEASE NOTE:  
 NON-CONSEALED FIXINGS CAN ALSO BE USED FOR TIMBER INSTALLATION. PLEASE REFER TO OPUS ORDER FORM OB101/10

THIS POST IS PROTECTED BY NZ DESIGN APPLICATION NO.416723

DRAWING UPDATED 19/05/16 TO INCLUDE NZS 4223.3:2016 REQUIREMENTS  
 DRAWING UPDATED 28/10/16 TO INCLUDE GLASS TYPES

**OPUS™ MANUFACTURING LTD.**

11 Grasslands Place  
 P.O.Box 5750 Frankton, Hamilton, New Zealand  
 Telephone: +64 7 847 5001  
 Fax: +64 7 847 5003

**OPUS SEMI - FRAMELESS BALUSTRADE POST OB101 SHOWING RECOMMENDED FIXING FOR FACE FIX CONCRETE/TIMBER**



OPUS MANUFACTURING LTD 2012

DRAWING NUMBER: OB100/5  
 TECHNICAL MANUAL PAGE 81D