

Index

Details for - Vertical Shiplap Weatherboards Direct Fix - Flexible Underlay

1-1-001	Index
1-1-101	Nail Fixing
1-1-111	Penetrations
1-1-151	Meter Box Bottom
1-1-152	Meter Box Side
1-1-153	Meter Box Head
1-1-211	Bottom of Wall - Timber Floor
1-1-221	Bottom of Wall - Concrete Floor
1-1-301	External Corner - Option A - Boxed Corner
1-1-302	External Corner - Option B - Square Corner Mould
1-1-303	External Corner - Option C - "V" Corner Mould
1-1-351	Internal Corner - Option A
1-1-352	Internal Corner - Option B
1-1-501	Door Sill
1-1-502	Door Jamb
1-1-503	Door Head
1-1-601	Window Sill
1-1-602	Window Jamb
1-1-603	Window Head
1-1-801	Eave Soffit
1-1-802	Flush Eave
1-1-851	Barge Soffit
1-1-852	Flush Barge
1-1-901	Roof to Wall - Top of roofing
1-1-902	Roof to Wall - Side of roofing
1-1-911	Parapet - [note]
1-1-951	Inter-storey Break - [note]
1-1-961	Horizontal Break - [note]

Notes:

Standards referred to in these Details;

- E2/AS1 External Moisture (Amendment 9 June 2019)
- NZS3604:2011 Timber-framed Buildings

All Details have been 'exploded' for clarity

Aluminium Joinery profiles used in these details are from "Nulook", change these profiles for the profiles of the Joinery company you are using



Ph: 03 544 6006
Email: sales@htlgroup.co.nz
Website: www.htlgroup.co.nz
48 Beach Road, Richmond, Nelson 7020
P O Box 3050, Richmond, Nelson 7050

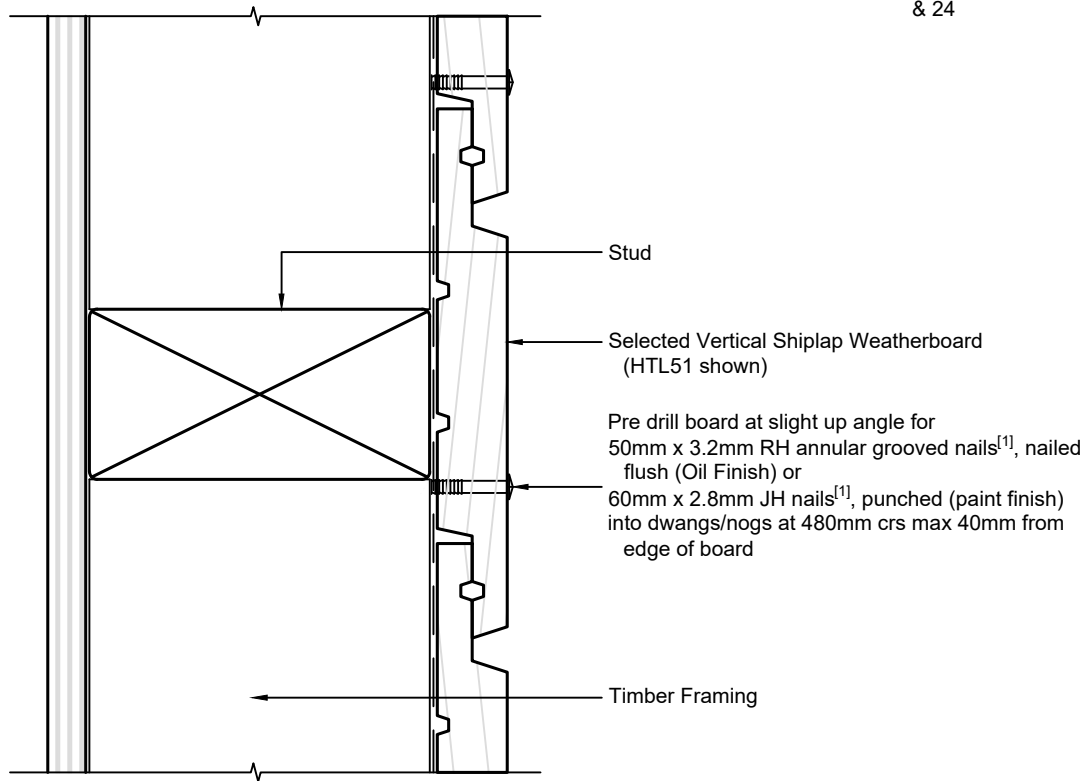
Vertical Shiplap Weatherboards
Direct Fix - Flexible Underlay
Index

1:1 @ A4

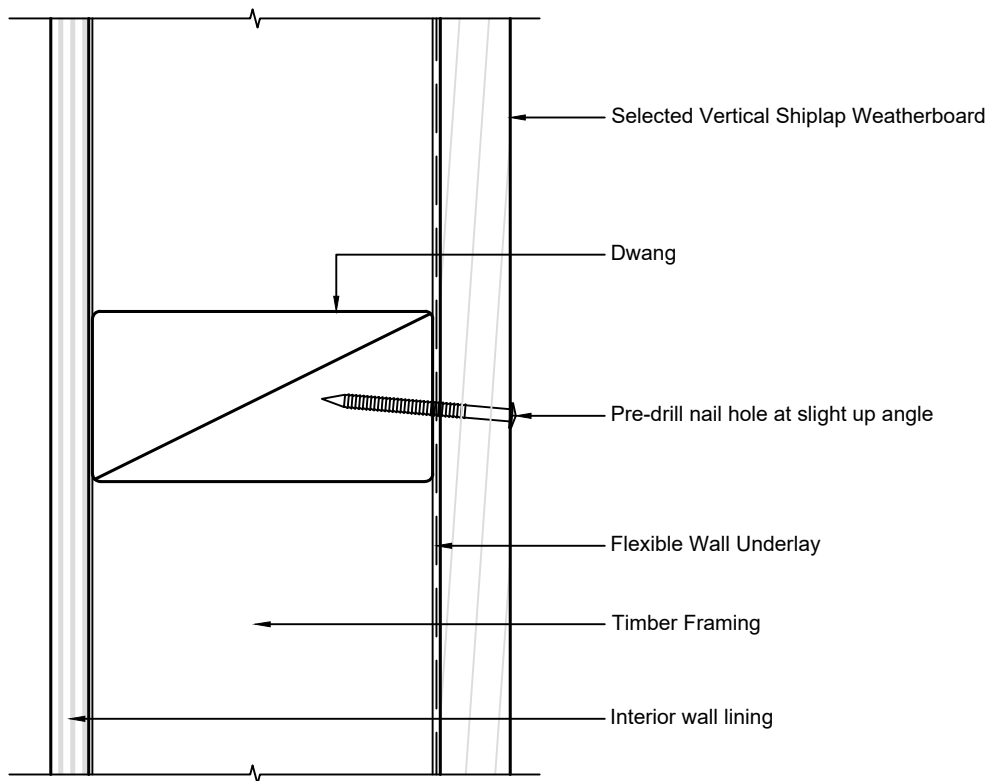
2021/01/26

Drawing No.
1-1-001

Note:
 1/ Cladding Fixings to comply with
 E2/AS1 para. 9.4.3.1 & Tables 20
 & 24



Horizontal cross section



Vertical cross section



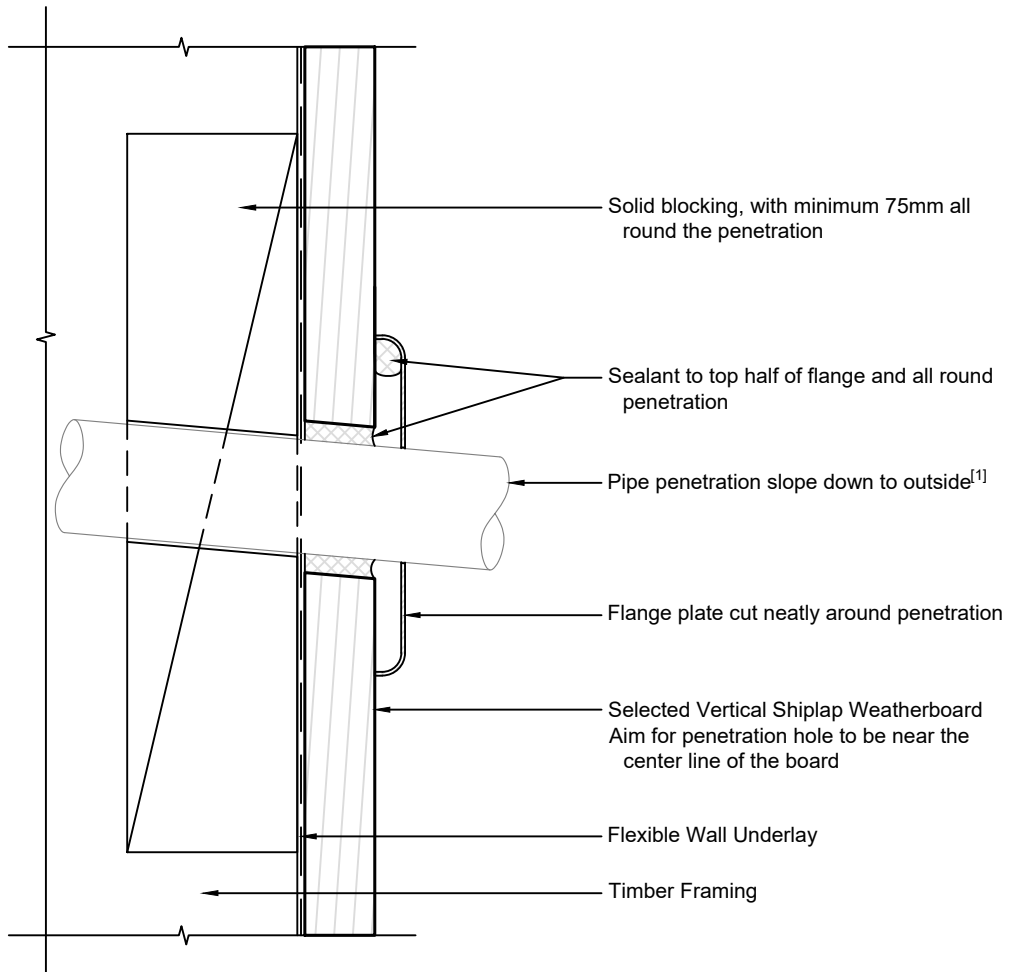
Ph: 03 544 6006
 Email: sales@htlgroup.co.nz
 Website: www.htlgroup.co.nz
 48 Beach Road, Richmond, Nelson 7020
 P O Box 3050, Richmond, Nelson 7050

Vertical Shiplap Weatherboards
Direct Fix - Flexible Underlay
Nail Fixing detail

1:2 @ A4 2021/01/26

Drawing No.
 1-1-101

Note:
 1/ Penetration to comply with E2/AS1 para. 9.1.9.3 & Fig. 68
 2/ Cladding Fixings to comply with E2/AS1 para. 9.4.3.1 & Tables 20 & 24



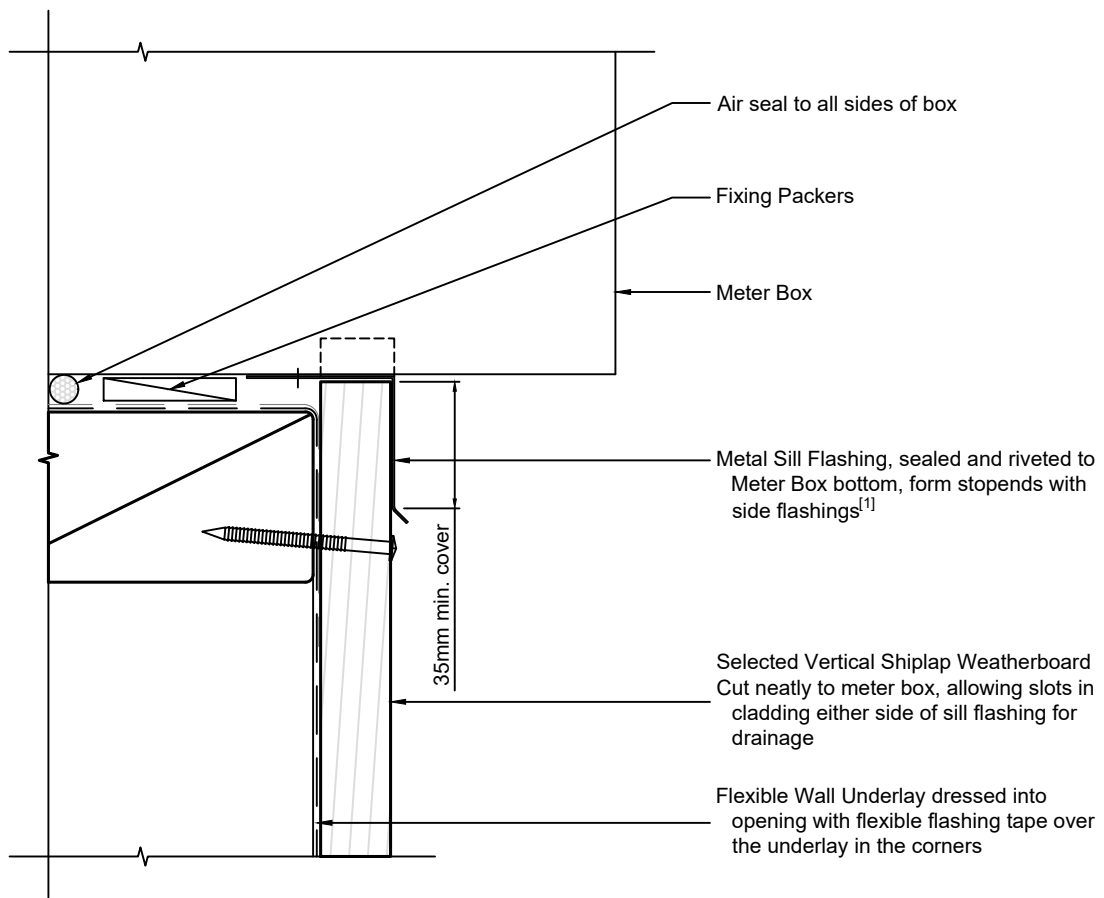
Ph: 03 544 6006
 Email: sales@htlgroup.co.nz
 Website: www.htlgroup.co.nz
 48 Beach Road, Richmond, Nelson 7020
 P O Box 3050, Richmond, Nelson 7050

**Vertical Shiplap Weatherboards
 Direct Fix - Flexible Underlay
 Penetration detail**

1:2 @ A4 | 2021/01/26

Drawing No.
 1-1-111

Note:
 1/ To comply with E2/AS1 para. 9.1.9.3
 2/ Cladding Fixings to comply with E2/AS1 para. 9.4.3.1 & Tables 20 & 24



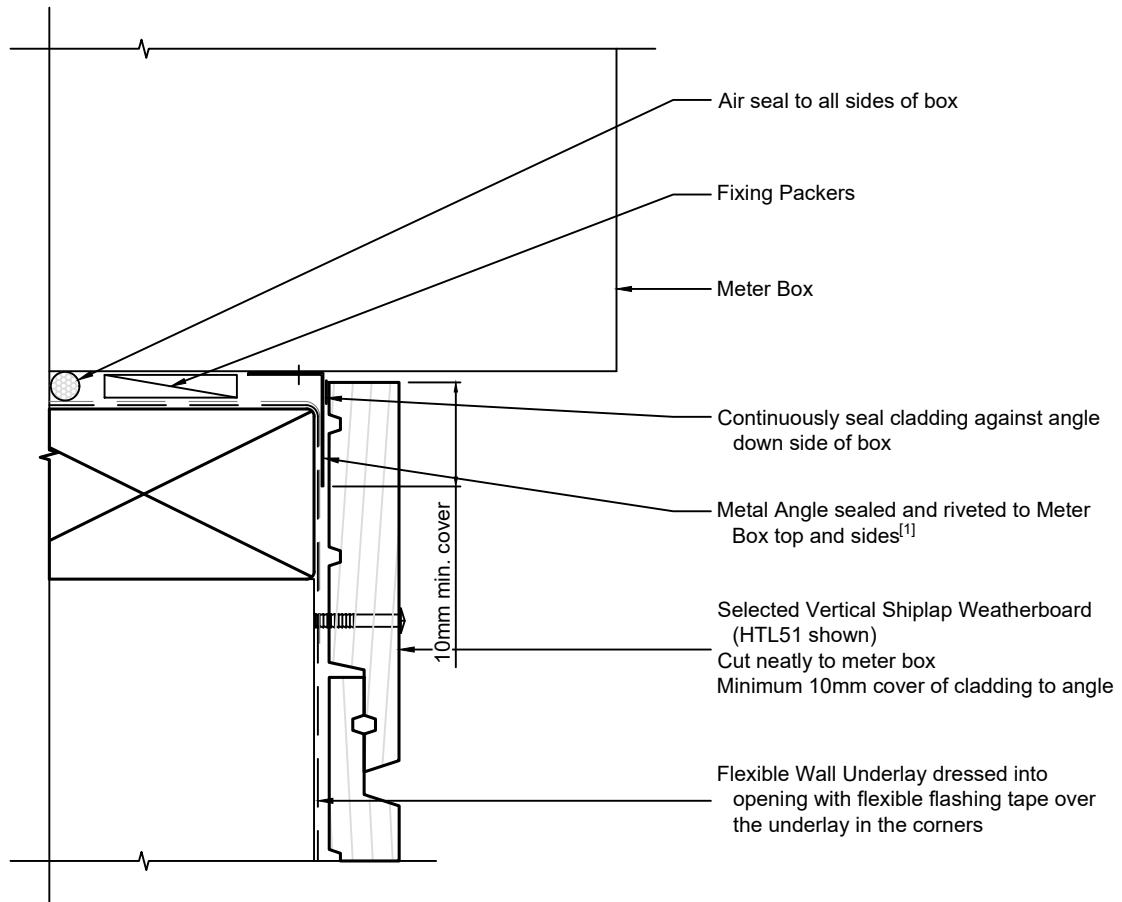
Ph: 03 544 6006
 Email: sales@htlgroup.co.nz
 Website: www.htlgroup.co.nz
 48 Beach Road, Richmond, Nelson 7020
 P O Box 3050, Richmond, Nelson 7050

**Vertical Shiplap Weatherboards
 Direct Fix - Flexible Underlay
 Meter Box - Bottom detail**

1:2 @ A4 2021/01/26

Drawing No.
 1-1-151

Note:
 1/ To comply with E2/AS1 para. 9.1.9.3
 2/ Cladding Fixings to comply with E2/AS1 para. 9.4.3.1 & Tables 20 & 24



Ph: 03 544 6006
 Email: sales@htlgroup.co.nz
 Website: www.htlgroup.co.nz
 48 Beach Road, Richmond, Nelson 7020
 P O Box 3050, Richmond, Nelson 7050

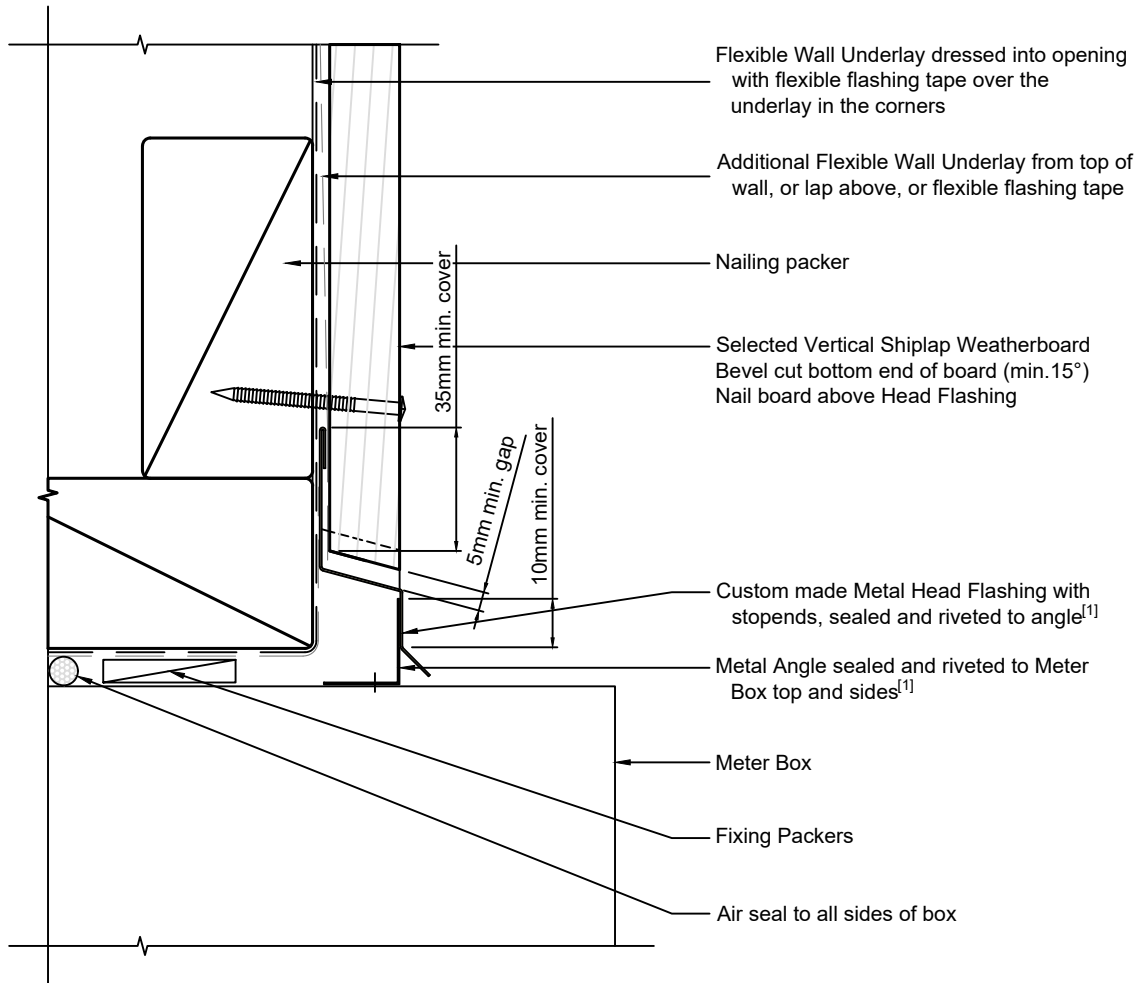
**Vertical Shiplap Weatherboards
 Direct Fix - Flexible Underlay
 Meter Box - Side detail**

1:2 @ A4 2021/01/26

Drawing No.
 1-1-152

Note:

- 1/ To comply with E2/AS1 para. 9.1.9.3 & Fig. 69
- 2/ Cladding Fixings to comply with E2/AS1 para. 9.4.3.1 & Tables 20 & 24



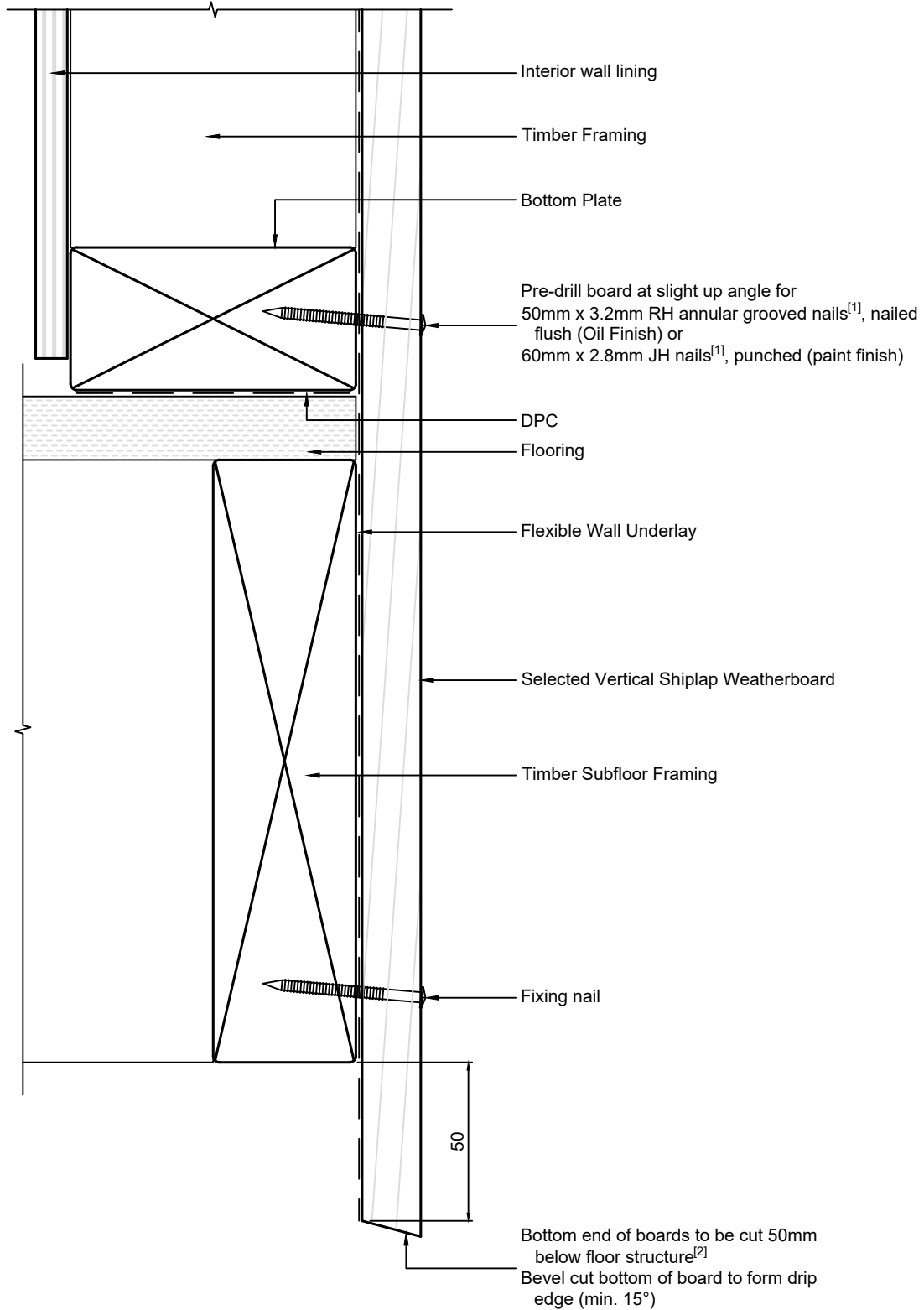
Ph: 03 544 6006
 Email: sales@htlgroup.co.nz
 Website: www.htlgroup.co.nz
 48 Beach Road, Richmond, Nelson 7020
 P O Box 3050, Richmond, Nelson 7050

**Vertical Shiplap Weatherboards
 Direct Fix - Flexible Underlay
 Meter Box - Head detail**

1:2 @ A4 | 2021/01/26

Drawing No.
 1-1-153

Note:
 1/ Cladding Fixings to comply with E2/AS1 para. 9.4.3.1 & Tables 20 & 24
 2/ Refer E2/AS1 para. 9.1.3.5(a)



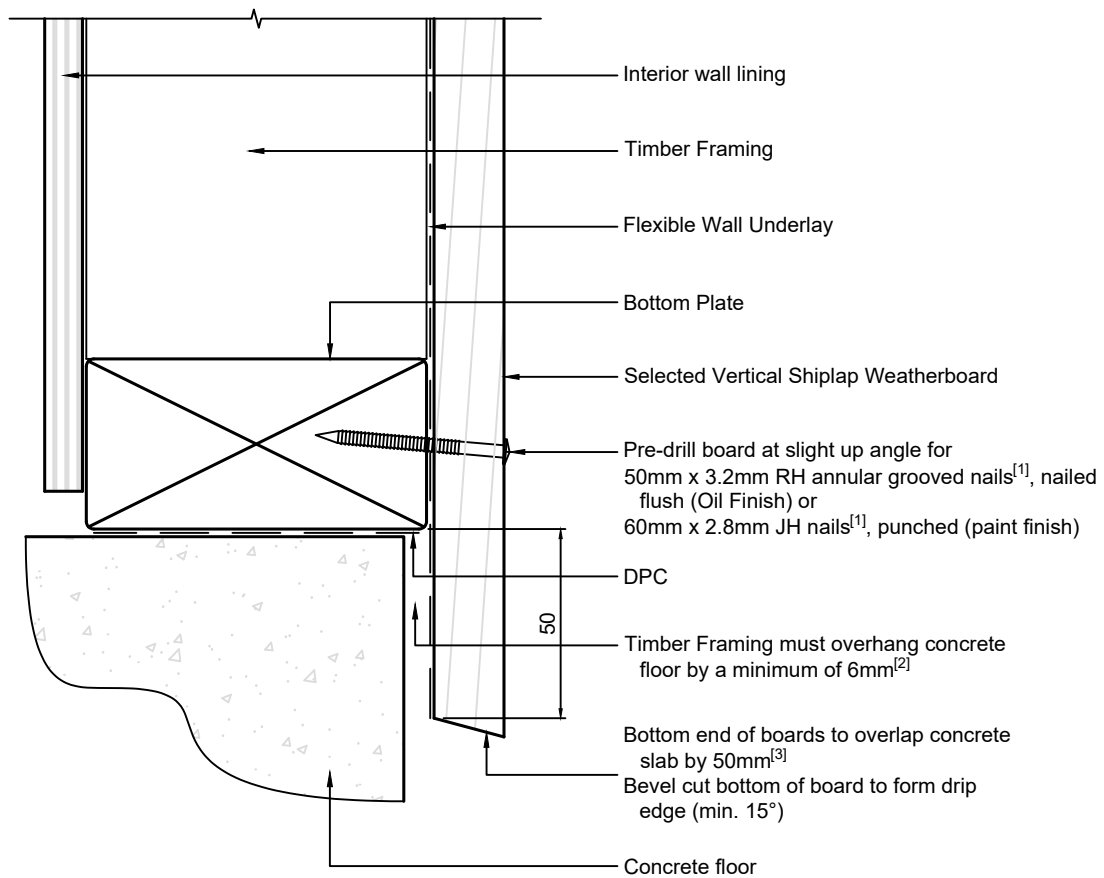
Ph: 03 544 6006
 Email: sales@htlgroup.co.nz
 Website: www.htlgroup.co.nz
 48 Beach Road, Richmond, Nelson 7020
 P O Box 3050, Richmond, Nelson 7050

Vertical Shiplap Weatherboards
Direct Fix - Flexible Underlay
Bottom of Wall detail
Timber Floor

1:2 @ A4 2021/01/26

Drawing No.
 1-1-211

Note:
 1/ Cladding Fixings to comply with E2/AS1 para. 9.4.3.1 & Tables 20 & 24
 2/ Refer E2/AS1 para. 9.1.3.3(c)
 3/ Refer E2/AS1 para. 9.1.3.3(b)



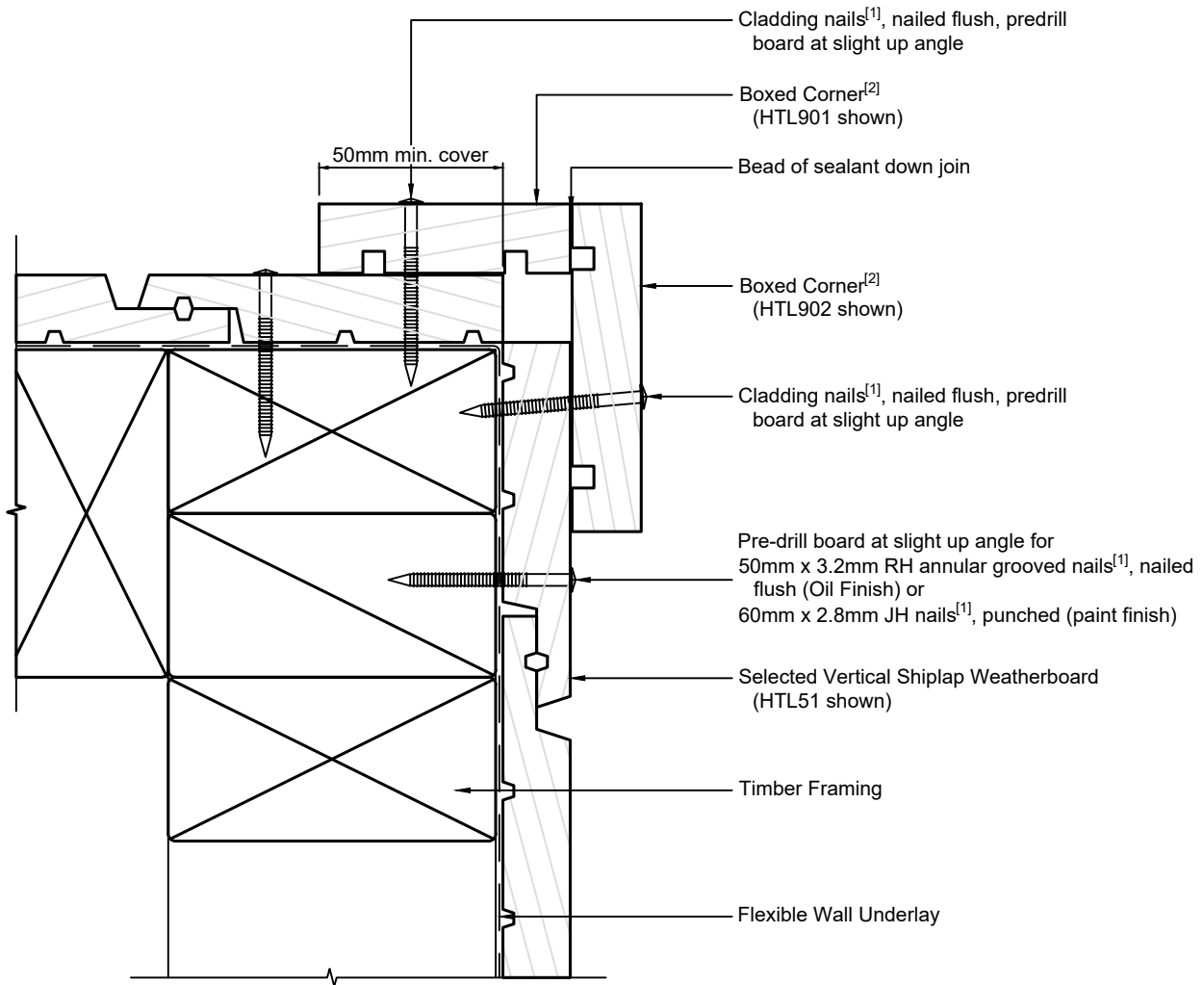
Ph: 03 544 6006
 Email: sales@htlgroup.co.nz
 Website: www.htlgroup.co.nz
 48 Beach Road, Richmond, Nelson 7020
 P O Box 3050, Richmond, Nelson 7050

Vertical Shiplap Weatherboards
Direct Fix - Flexible Underlay
Bottom of Wall detail
Concrete Floor

1:2 @ A4 2021/01/26

Drawing No.
 1-1-221

Note:
 1/ Cladding Fixings to comply with E2/AS1 para. 9.4.3.1 & Tables 20 & 24
 2/ The minimum cover of Boxed Corner boards to comply with E2/AS1 para. 9.4.5.3(a) & Fig. 80



Option A



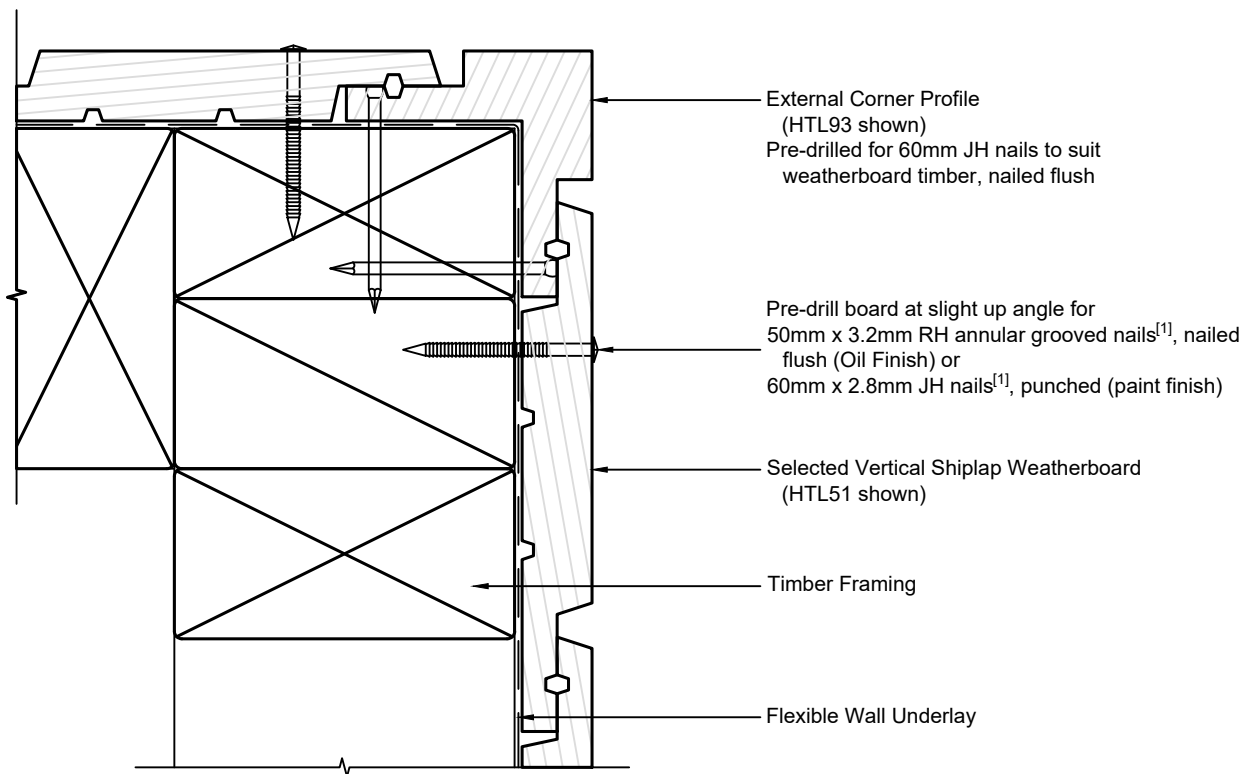
Ph: 03 544 6006
 Email: sales@htlgroup.co.nz
 Website: www.htlgroup.co.nz
 48 Beach Road, Richmond, Nelson 7020
 P O Box 3050, Richmond, Nelson 7050

Vertical Shiplap Weatherboards
Direct Fix - Flexible Underlay
External Corner detail
Option A - Boxed Corner

1:2 @ A4 2021/01/26

Drawing No.
 1-1-301

Note:
 1/ Cladding Fixings to comply with
 E2/AS1 para. 9.4.3.1 & Tables 20
 & 24



Option B



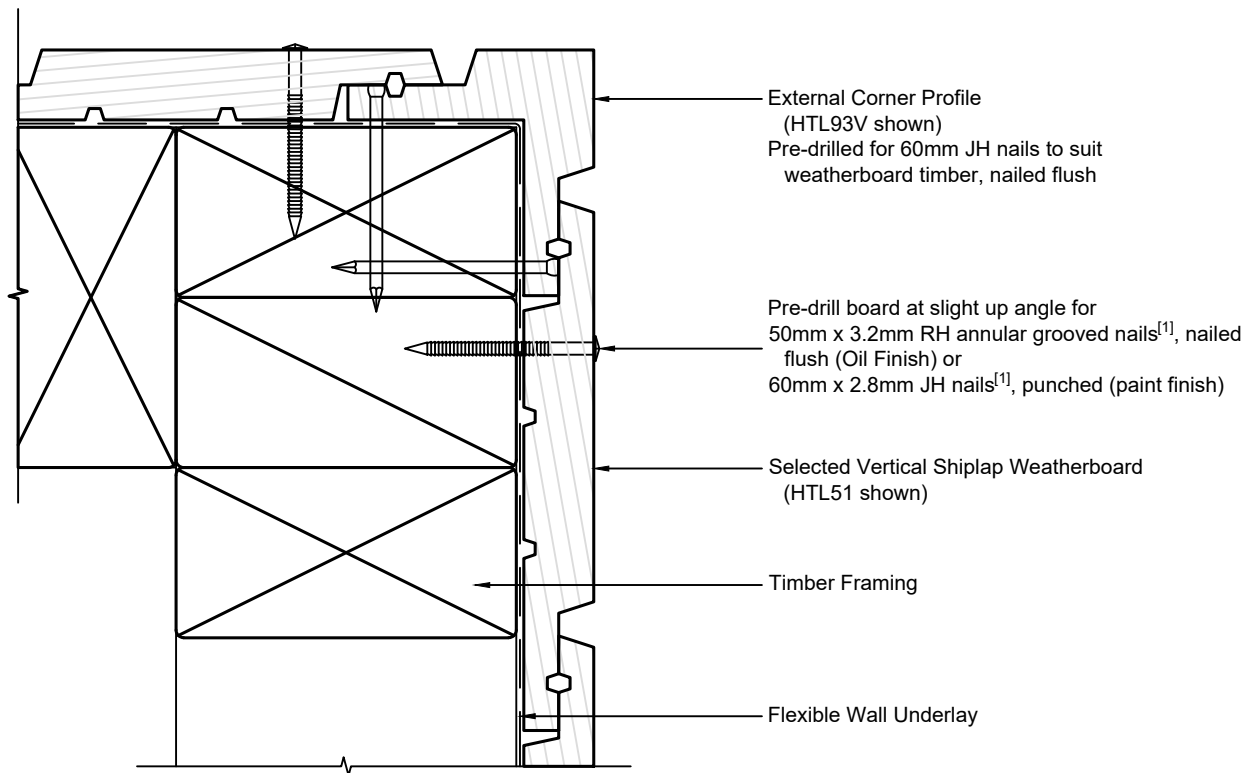
Ph: 03 544 6006
 Email: sales@htlgroup.co.nz
 Website: www.htlgroup.co.nz
 48 Beach Road, Richmond, Nelson 7020
 P O Box 3050, Richmond, Nelson 7050

Vertical Shiplap Weatherboards
Direct Fix - Flexible Underlay
External Corner detail
Option B - Square Corner Mould

1:2 @ A4 2021/01/26

Drawing No.
 1-1-302

Note:
 1/ Cladding Fixings to comply with
 E2/AS1 para. 9.4.3.1 & Tables 20
 & 24



Option C



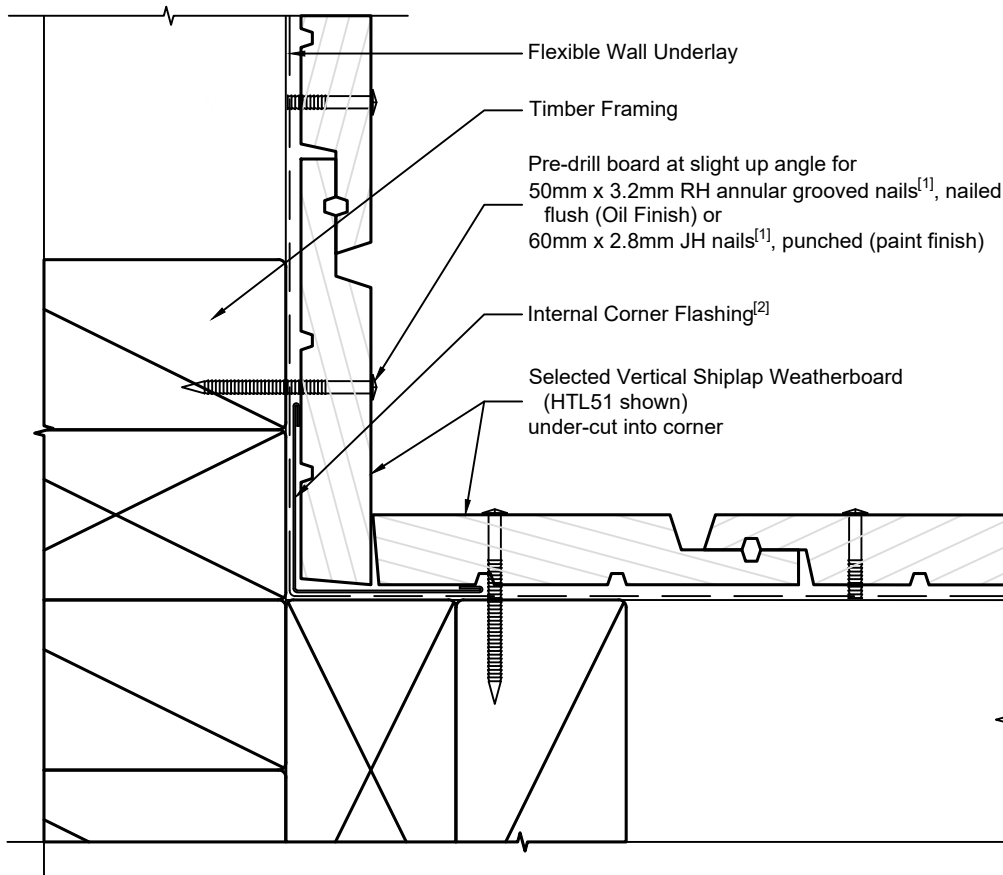
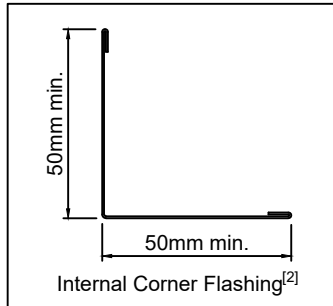
Ph: 03 544 6006
 Email: sales@htlgroup.co.nz
 Website: www.htlgroup.co.nz
 48 Beach Road, Richmond, Nelson 7020
 P O Box 3050, Richmond, Nelson 7050

Vertical Shiplap Weatherboards
Direct Fix - Flexible Underlay
External Corner detail
Option C - "V" - Corner Mould

1:2 @ A4 2021/01/26

Drawing No.
 1-1-303

Note:
 1/ Cladding Fixings to comply with E2/AS1 para. 9.4.3.1 & Tables 20 & 24
 2/ Corner Flashing dimensions to comply with E2/AS1 para. 9.4.5.3(b) & Fig. 79(a) & Table 7



Option A



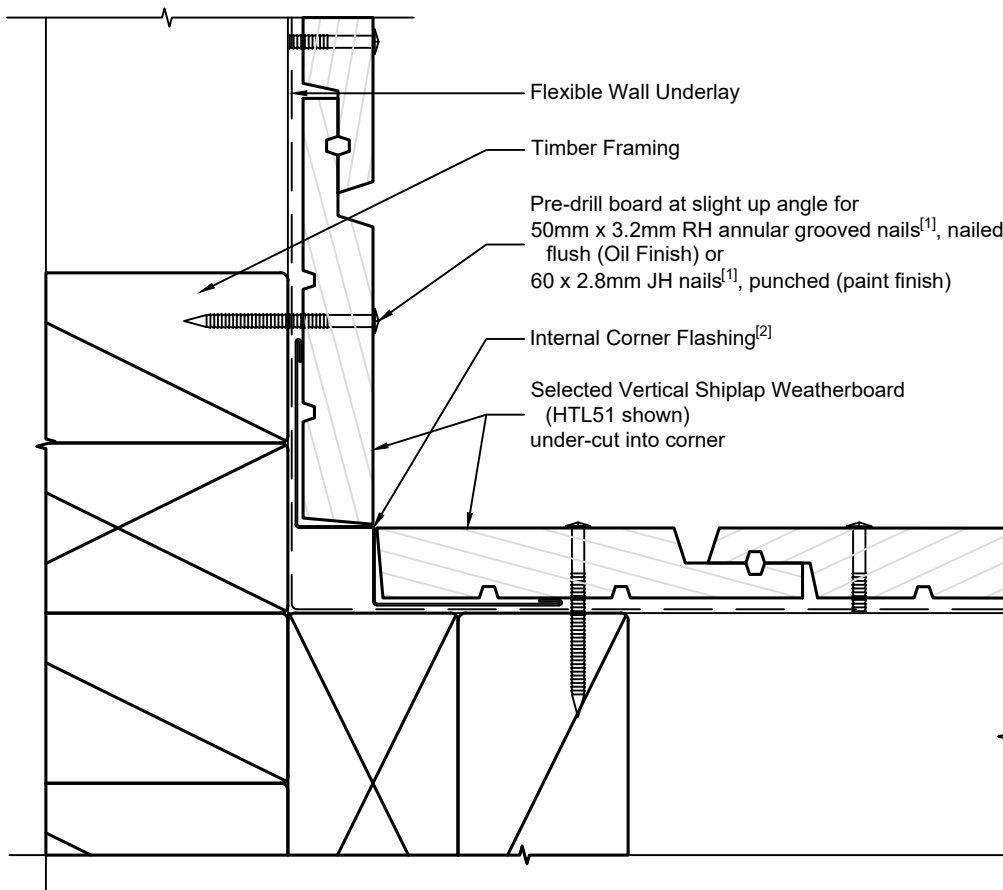
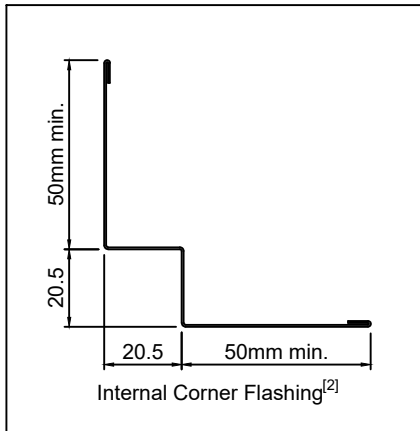
Ph: 03 544 6006
 Email: sales@htlgroup.co.nz
 Website: www.htlgroup.co.nz
 48 Beach Road, Richmond, Nelson 7020
 P O Box 3050, Richmond, Nelson 7050

Vertical Shiplap Weatherboards
 Direct Fix - Flexible Underlay
 Internal Corner detail
 Option A

1:2 @ A4 2021/01/26

Drawing No.
 1-1-351

Note:
 1/ Cladding Fixings to comply with E2/AS1 para. 9.4.3.1 & Tables 20 & 24
 2/ Corner Flashing dimensions to comply with E2/AS1 para. 9.4.5.3(b) & Fig. 79(b) & Table 7



Option B



Ph: 03 544 6006
 Email: sales@htlgroup.co.nz
 Website: www.htlgroup.co.nz
 48 Beach Road, Richmond, Nelson 7020
 P O Box 3050, Richmond, Nelson 7050

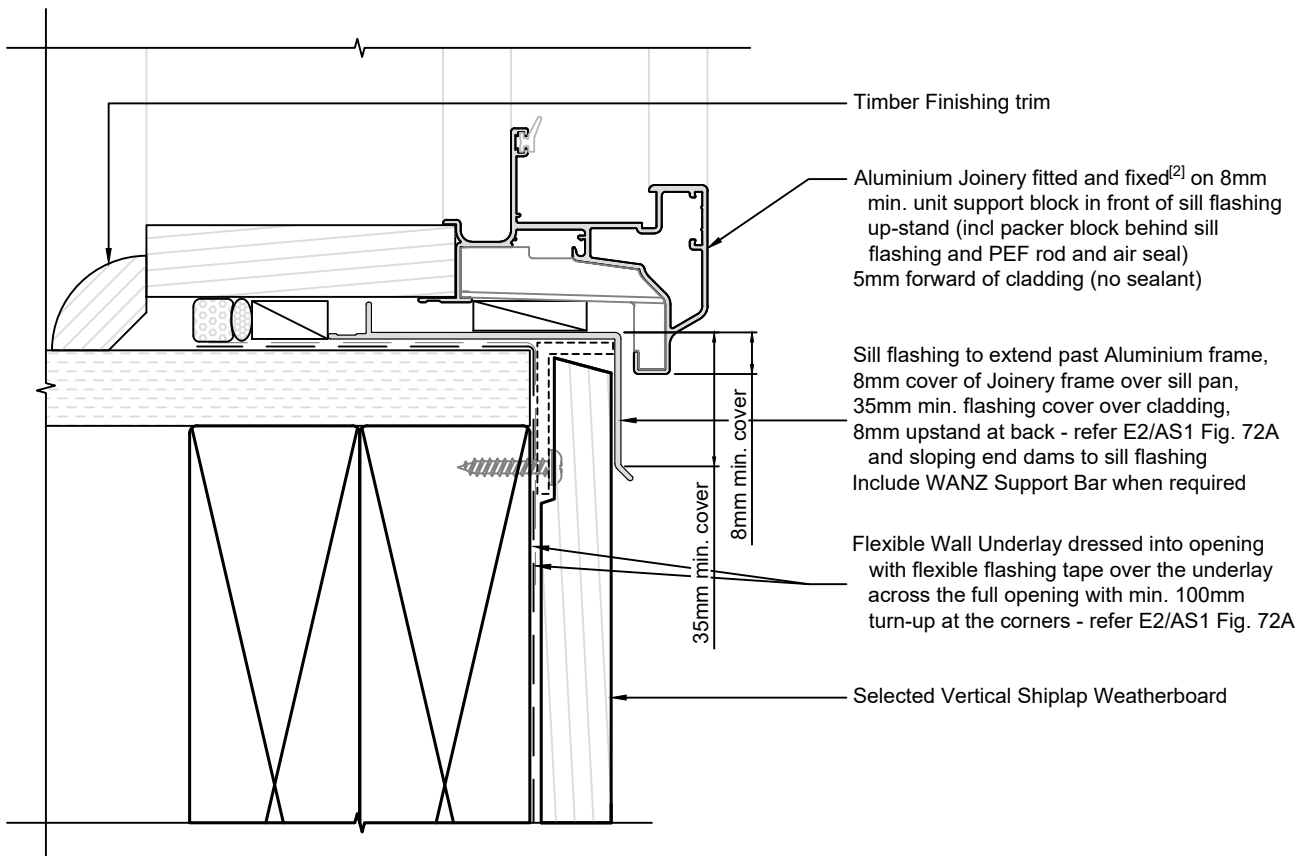
Vertical Shiplap Weatherboards
 Direct Fix - Flexible Underlay
 Internal Corner detail
 Option B

1:2 @ A4 2021/01/26

Drawing No.
 1-1-352

Note:

- 1/ To comply similar to E2/AS1, Fig. 83
- 2/ Joinery Fixing to comply with E2/AS1 para. 9.1.10.8 - pairs of 75mm x 3.15mm galv. JH nails or 8g x 65mm s/s screws, through reveals into framing at max 150mm from corners and at 450mm centres along sill
- 3/ Cladding Fixings to comply with E2/AS1 para. 9.4.3.1 & Tables 20 & 24



Ph: 03 544 6006
 Email: sales@htlgroup.co.nz
 Website: www.htlgroup.co.nz
 48 Beach Road, Richmond, Nelson 7020
 P O Box 3050, Richmond, Nelson 7050

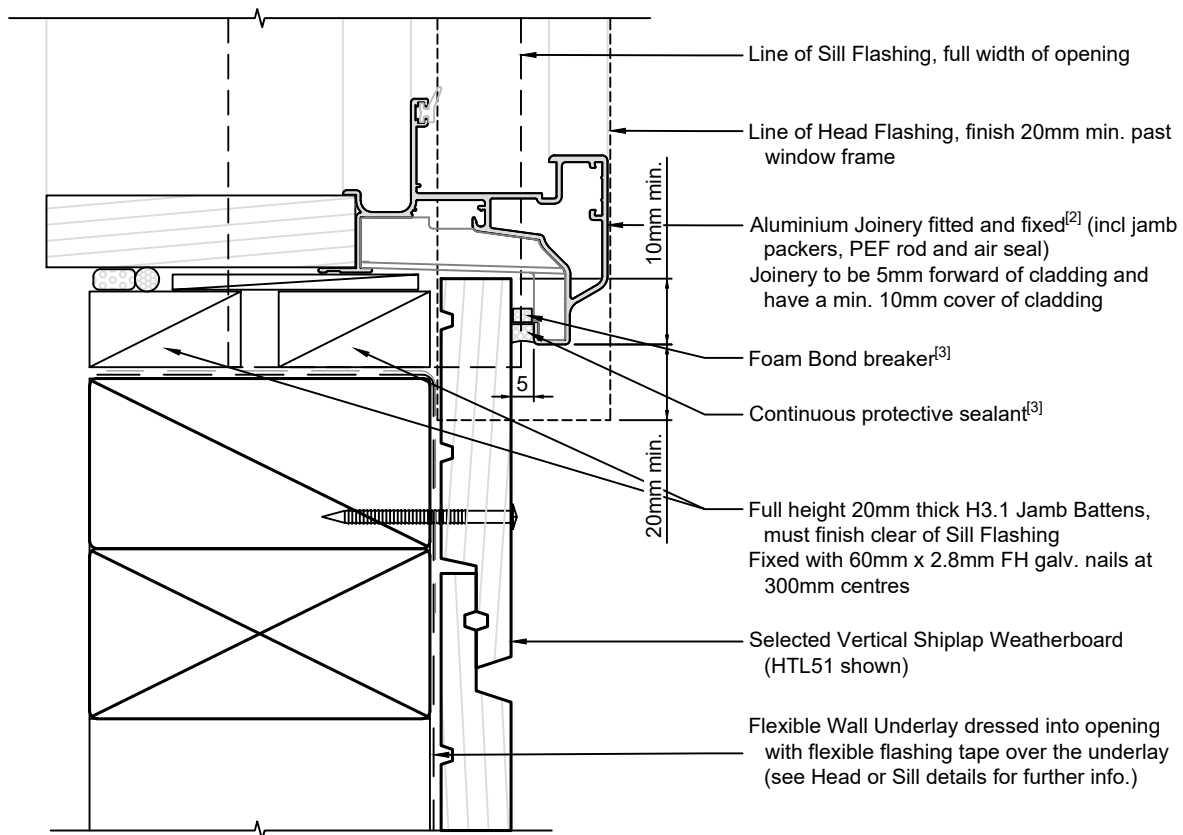
Vertical Shiplap Weatherboards
Direct Fix - Flexible Underlay
Door Sill detail

1:2 @ A4 2021/01/26

Drawing No.
 1-1-501

Note:

- 1/ To comply similar to E2/AS1, Fig. 83
- 2/ Joinery Fixing to comply with E2/AS1 para. 9.1.10.8 - pairs of 75mm x 3.15mm galv. JH nails or 8g x 65mm s/s screws, through reveals into framing at max 150mm from corners and at 450mm centres along jamb
- 3/ Alternatively EITHER 1) If recess in boards occurs at window, fit closure piece OR 2) Depending on board layout, scribes or facing boards may be appropriate
- 4/ Cladding Fixings to comply with E2/AS1 para. 9.4.3.1 & Tables 20 & 24



Ph: 03 544 6006
Email: sales@htlgroup.co.nz
Website: www.htlgroup.co.nz
48 Beach Road, Richmond, Nelson 7020
P O Box 3050, Richmond, Nelson 7050

**Vertical Shiplap Weatherboards
Direct Fix - Flexible Underlay
Door Jamb detail**

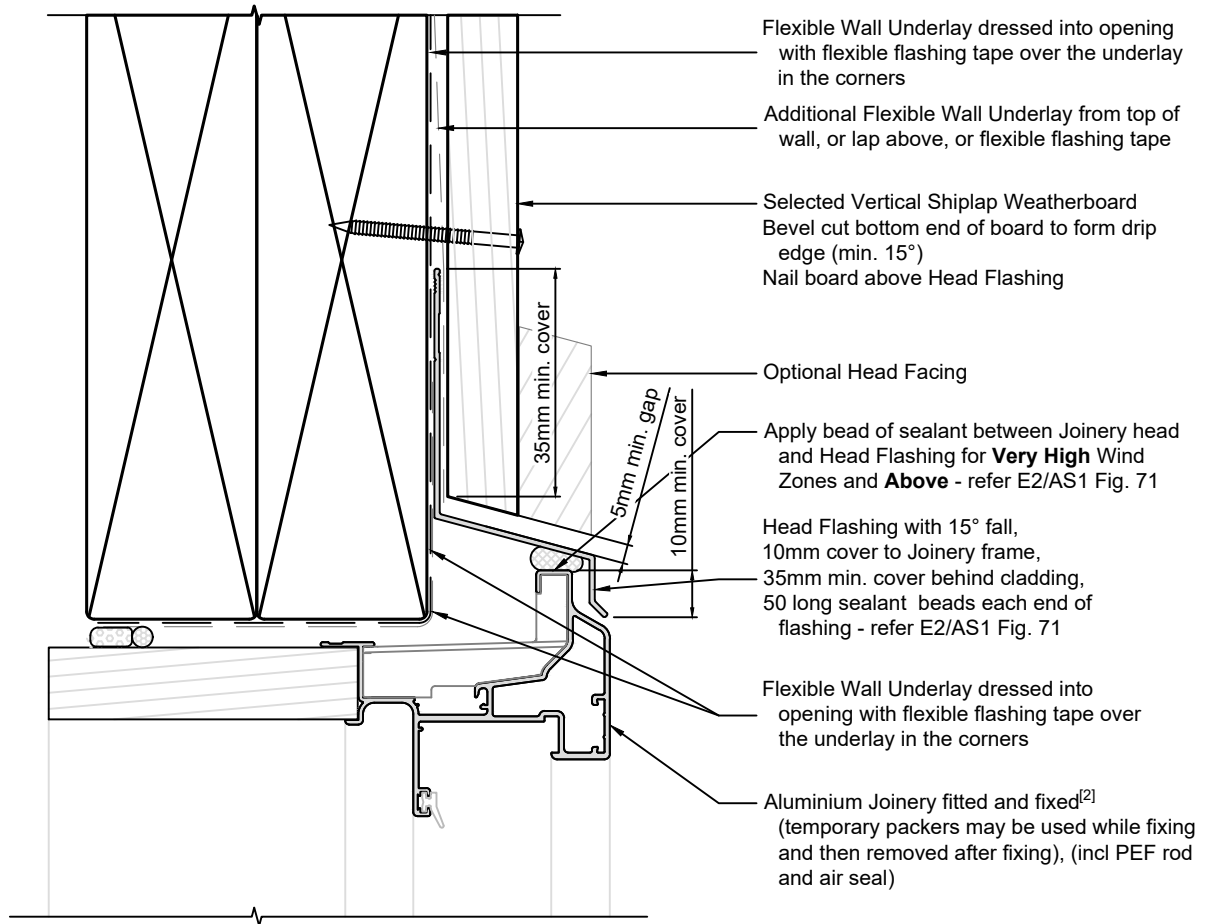
1:2 @ A4

2021/01/26

Drawing No.
1-1-502

Note:

- 1/ To comply similar to E2/AS1, Fig. 83
- 2/ Joinery Fixing to comply with E2/AS1 para. 9.1.10.8 - pairs of 75mm x 3.15mm galv. JH nails or 8g x 65mm s/s screws, through reveals into framing at max 150mm from corners and at 450mm centres along head
- 3/ Cladding Fixings to comply with E2/AS1 para. 9.4.3.1 & Tables 20 & 24



Ph: 03 544 6006
 Email: sales@htlgroup.co.nz
 Website: www.htlgroup.co.nz
 48 Beach Road, Richmond, Nelson 7020
 P O Box 3050, Richmond, Nelson 7050

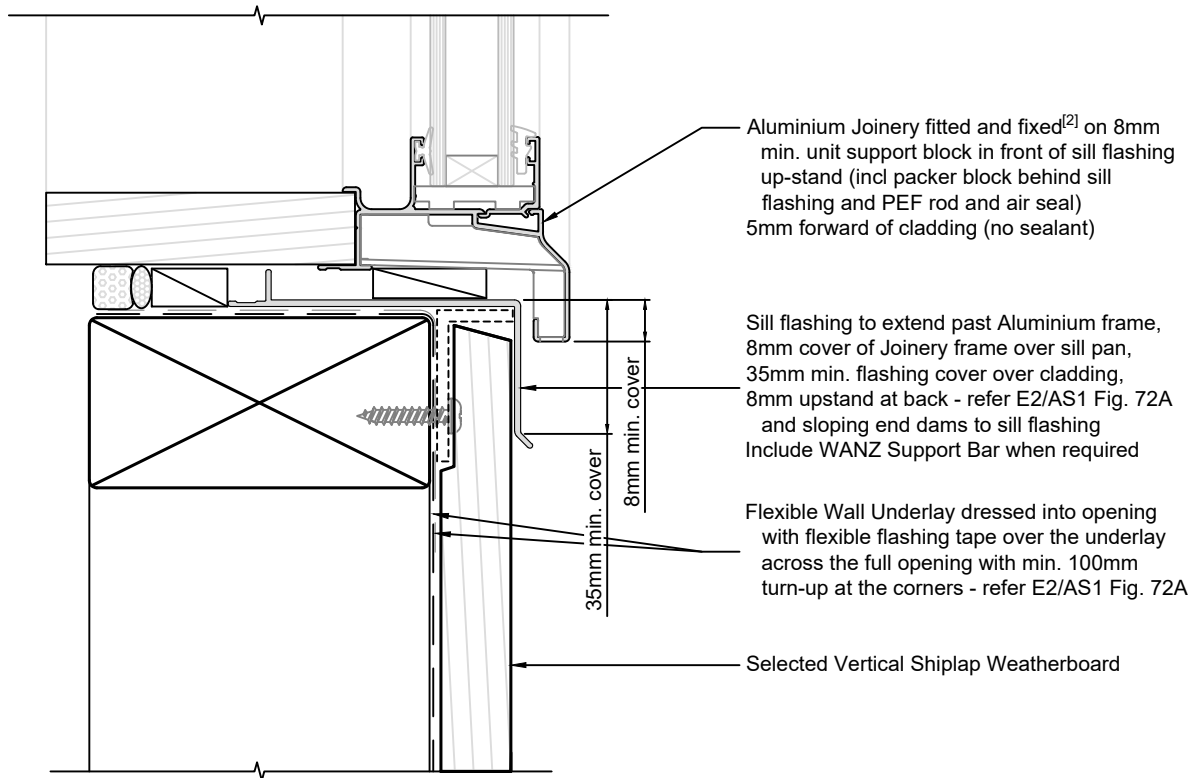
**Vertical Shiplap Weatherboards
 Direct Fix - Flexible Underlay
 Door Head detail**

1:2 @ A4 2021/01/26

Drawing No.
 1-1-503

Note:

- 1/ To comply similar to E2/AS1, Fig. 83
- 2/ Joinery Fixing to comply with E2/AS1 para. 9.1.10.8 - pairs of 75mm x 3.15mm galv. JH nails or 8g x 65mm s/s screws, through reveals into framing at max 150mm from corners and at 450mm centres along sill
- 3/ Cladding Fixings to comply with E2/AS1 para. 9.4.3.1 & Tables 20 & 24



Ph: 03 544 6006
Email: sales@htlgroup.co.nz
Website: www.htlgroup.co.nz
48 Beach Road, Richmond, Nelson 7020
P O Box 3050, Richmond, Nelson 7050

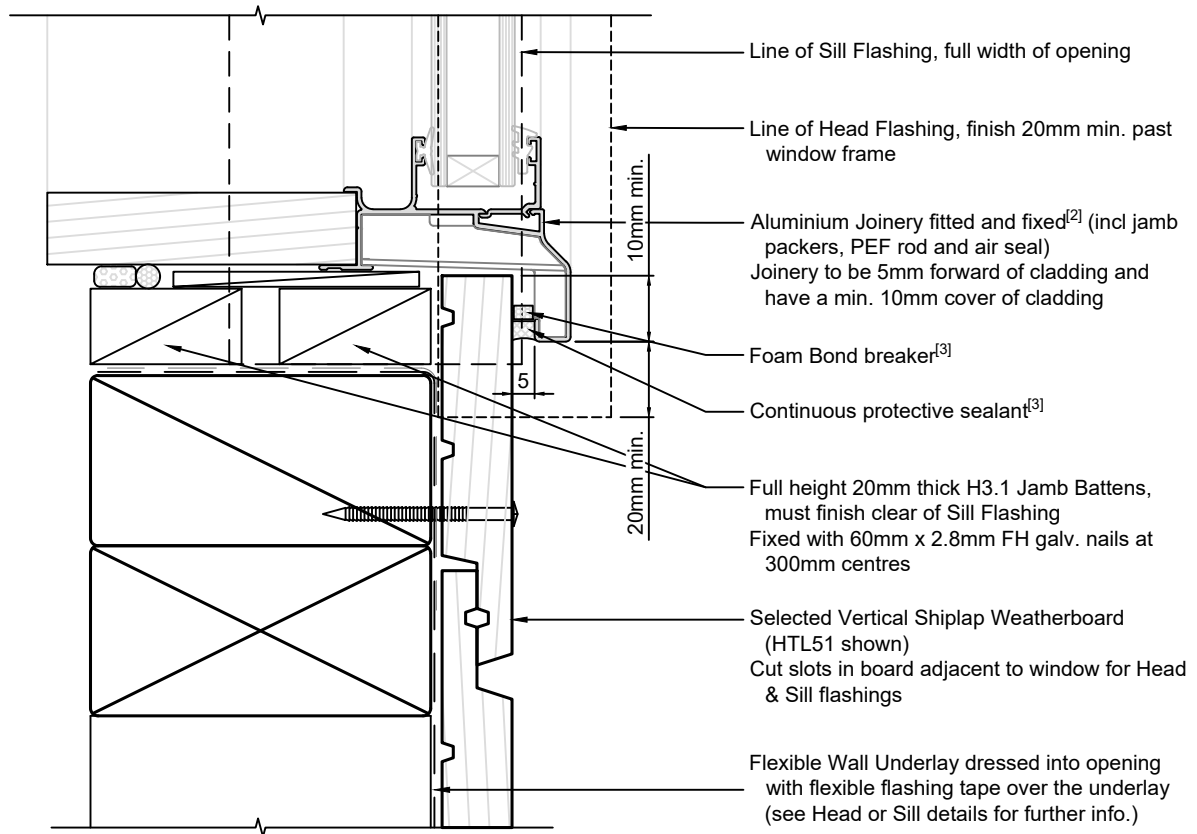
**Vertical Shiplap Weatherboards
Direct Fix - Flexible Underlay
Window Sill detail**

1:2 @ A4 2021/01/26

Drawing No.
1-1-601

Note:

- 1/ To comply similar to E2/AS1, Fig. 83
- 2/ Joinery Fixing to comply with E2/AS1 para. 9.1.10.8 - pairs of 75mm x 3.15mm galv. JH nails or 8g x 65mm s/s screws, through reveals into framing at max 150mm from corners and at 450mm centres along jamb
- 3/ Alternatively EITHER 1) If recess in boards occurs at window, fit closure piece OR 2) Depending on board layout, scribes or facing boards may be appropriate
- 4/ Cladding Fixings to comply with E2/AS1 para. 9.4.3.1 & Tables 20 & 24



Ph: 03 544 6006
 Email: sales@htlgroup.co.nz
 Website: www.htlgroup.co.nz
 48 Beach Road, Richmond, Nelson 7020
 P O Box 3050, Richmond, Nelson 7050

**Vertical Shiplap Weatherboards
 Direct Fix - Flexible Underlay
 Window Jamb detail**

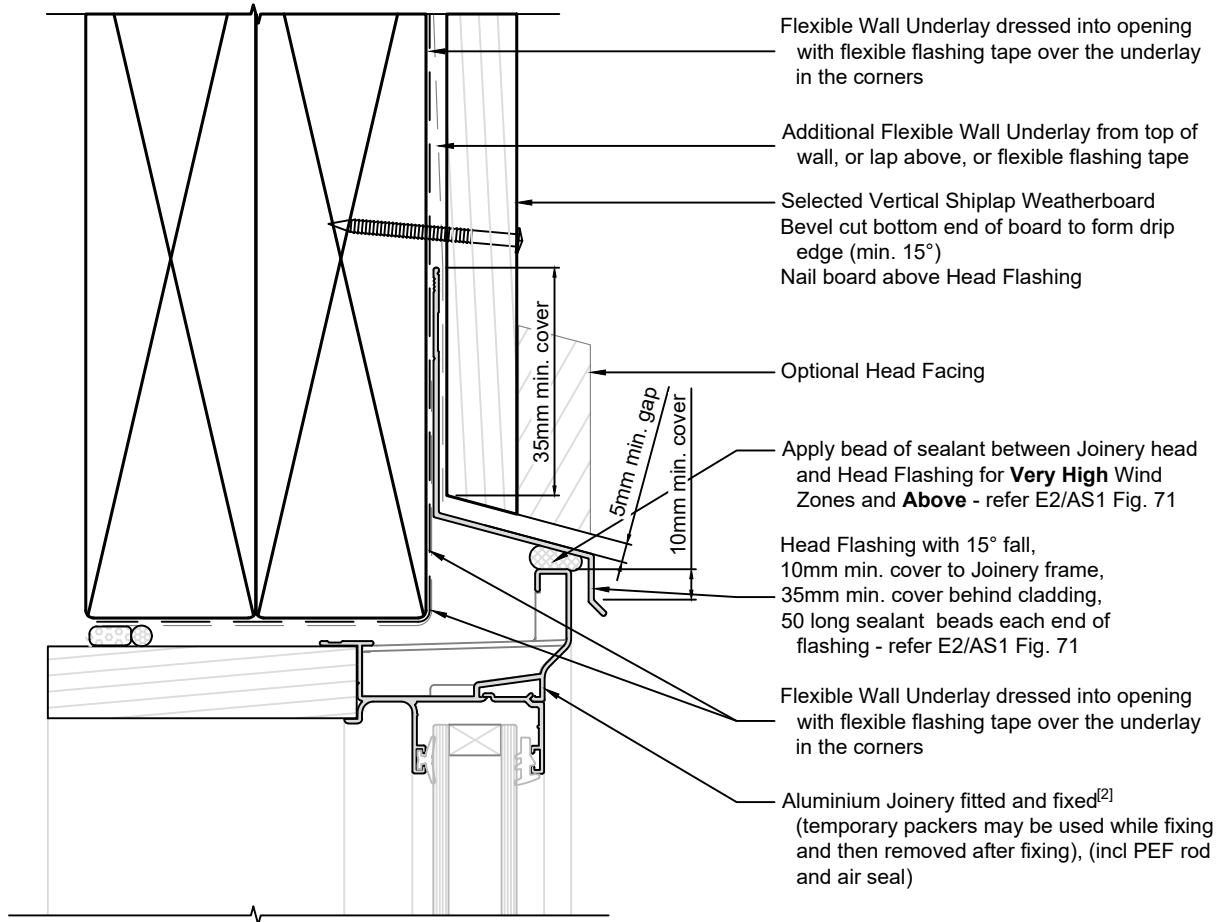
1:2 @ A4

2021/01/26

Drawing No.
 1-1-602

Note:

- 1/ To comply similar to E2/AS1, Fig. 83
- 2/ Joinery Fixing to comply with E2/AS1 para. 9.1.10.8 - pairs of 75mm x 3.15mm galv. JH nails or 8g x 65mm s/s screws, through reveals into framing at max 150mm from corners and at 450mm centres along head
- 3/ Cladding Fixings to comply with E2/AS1 para. 9.4.3.1 & Tables 20 & 24



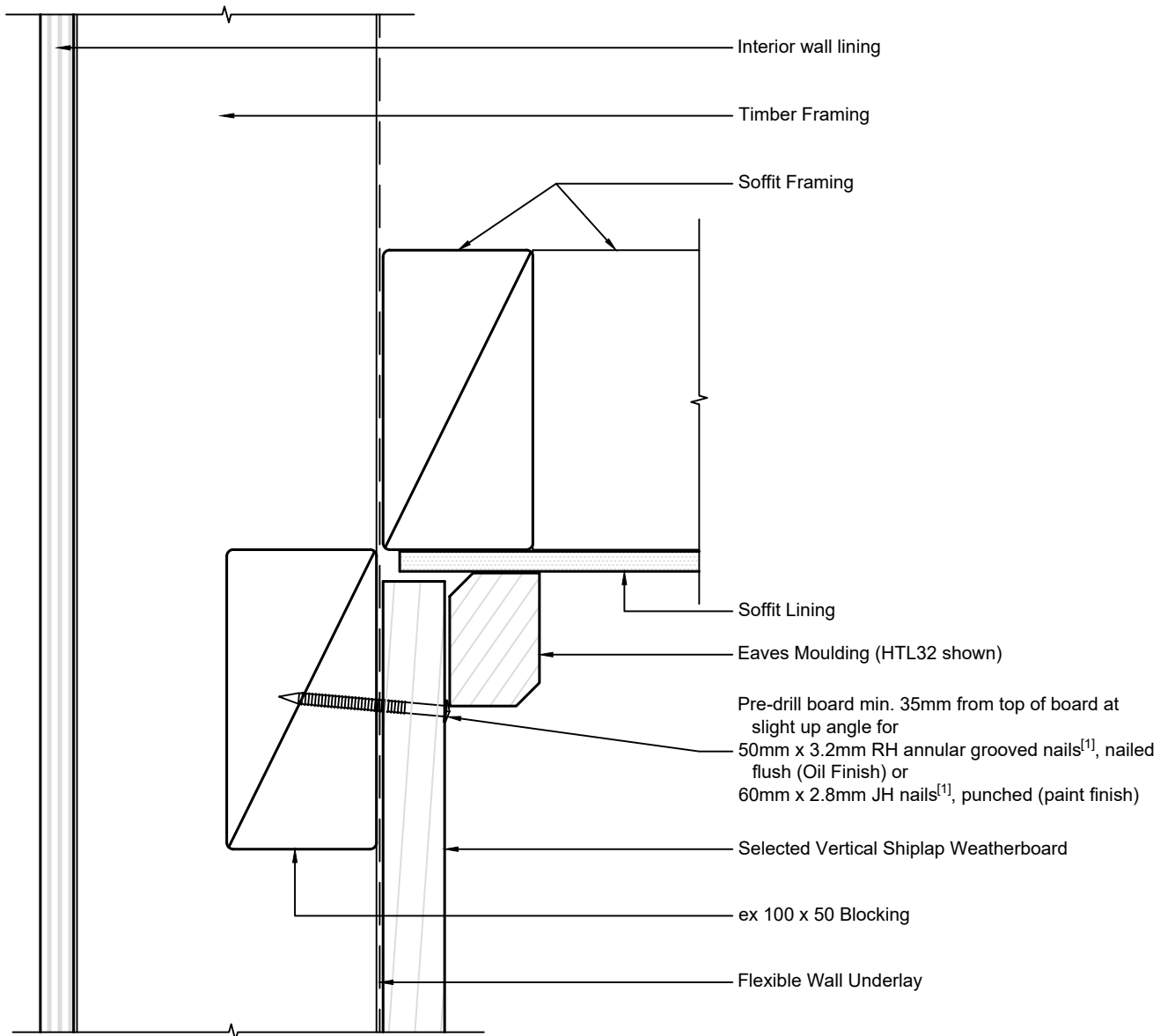
Ph: 03 544 6006
 Email: sales@htlgroup.co.nz
 Website: www.htlgroup.co.nz
 48 Beach Road, Richmond, Nelson 7020
 P O Box 3050, Richmond, Nelson 7050

**Vertical Shiplap Weatherboards
 Direct Fix - Flexible Underlay
 Window Head detail**

1:2 @ A4 | 2021/01/26

Drawing No.
 1-1-603

Note:
 1/ Cladding Fixings to comply with
 E2/AS1 para. 9.4.3.1 & Tables 20
 & 24



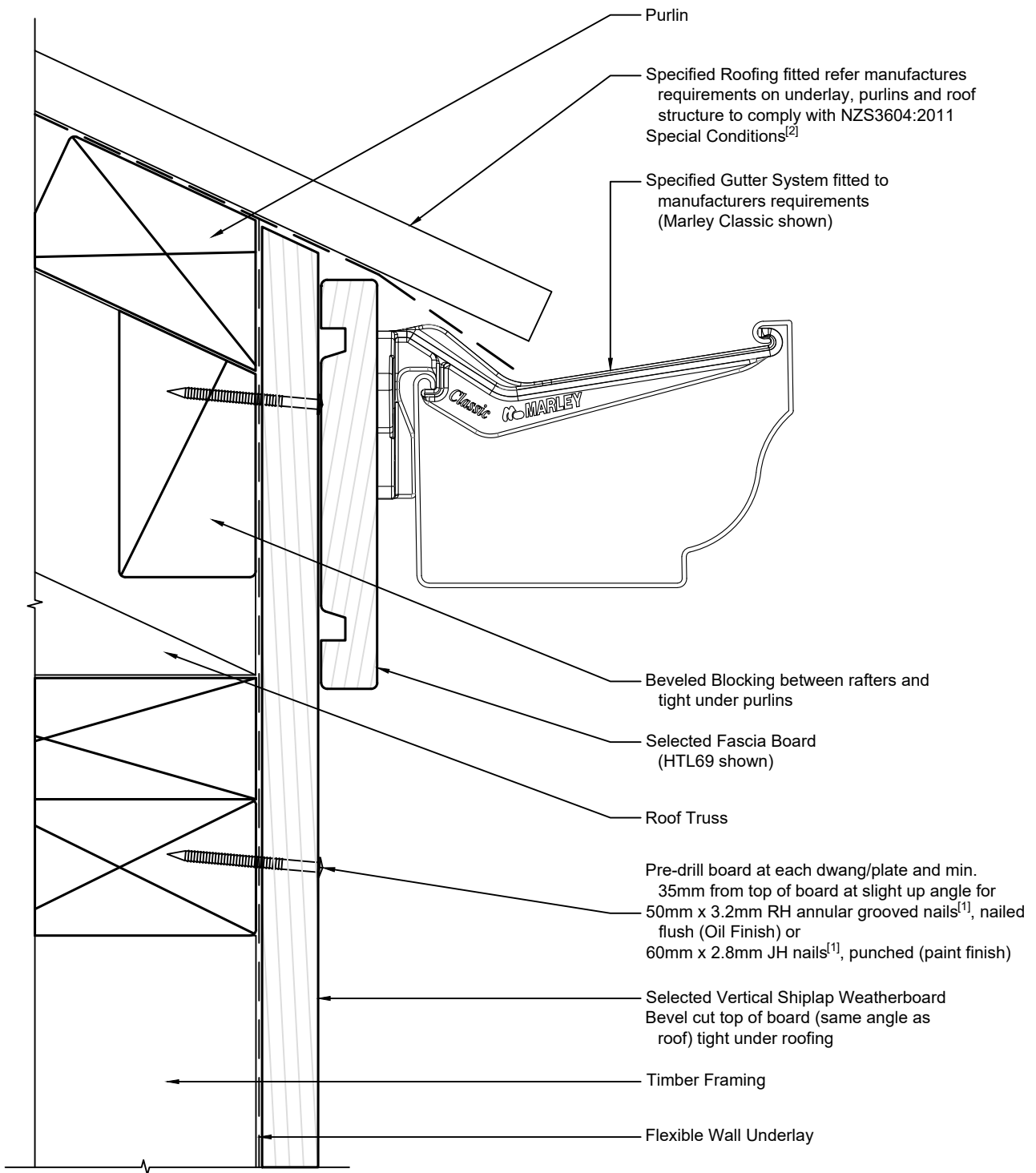
Ph: 03 544 6006
 Email: sales@htlgroup.co.nz
 Website: www.htlgroup.co.nz
 48 Beach Road, Richmond, Nelson 7020
 P O Box 3050, Richmond, Nelson 7050

Vertical Shiplap Weatherboards
Direct Fix - Flexible Underlay
Eave Soffit detail

1:2 @ A4 | 2021/01/26

Drawing No.
 1-1-801

Note:
 1/ Cladding Fixings to comply with E2/AS1 para. 9.4.3.1 & Tables 20 & 24
 2/ Eave flashing required for Special Conditions, refer E2/AS1 para. 8.4.12(d), Fig 45 & Table 7



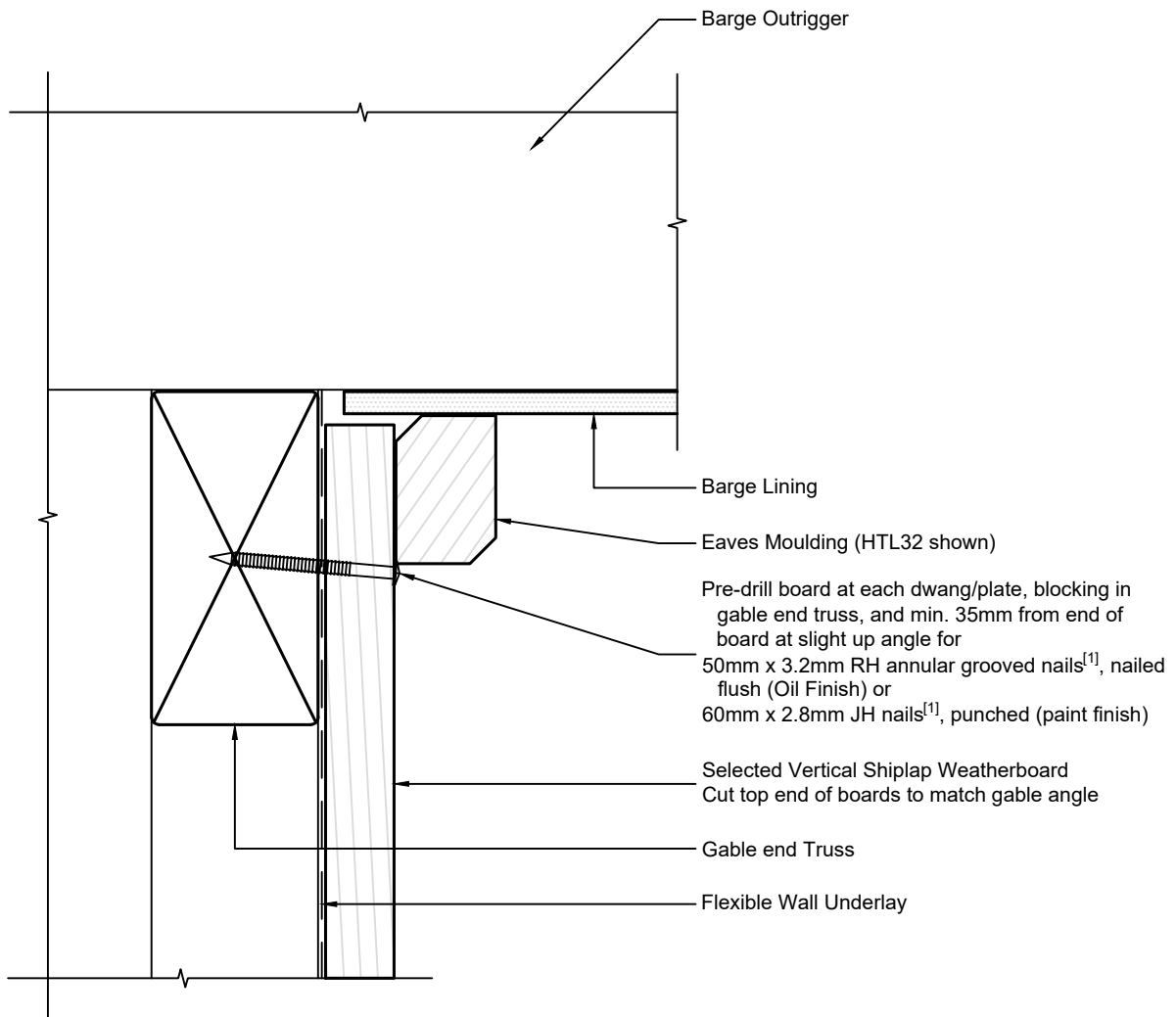
Ph: 03 544 6006
 Email: sales@htlgroup.co.nz
 Website: www.htlgroup.co.nz
 48 Beach Road, Richmond, Nelson 7020
 P O Box 3050, Richmond, Nelson 7050

**Vertical Shiplap Weatherboards
 Direct Fix - Flexible Underlay
 Flush Eave detail**

1:2 @ A4 2021/01/26

Drawing No.
 1-1-802

Note:
 1/ Cladding Fixings to comply with
 E2/AS1 para. 9.4.3.1 & Tables 20
 & 24



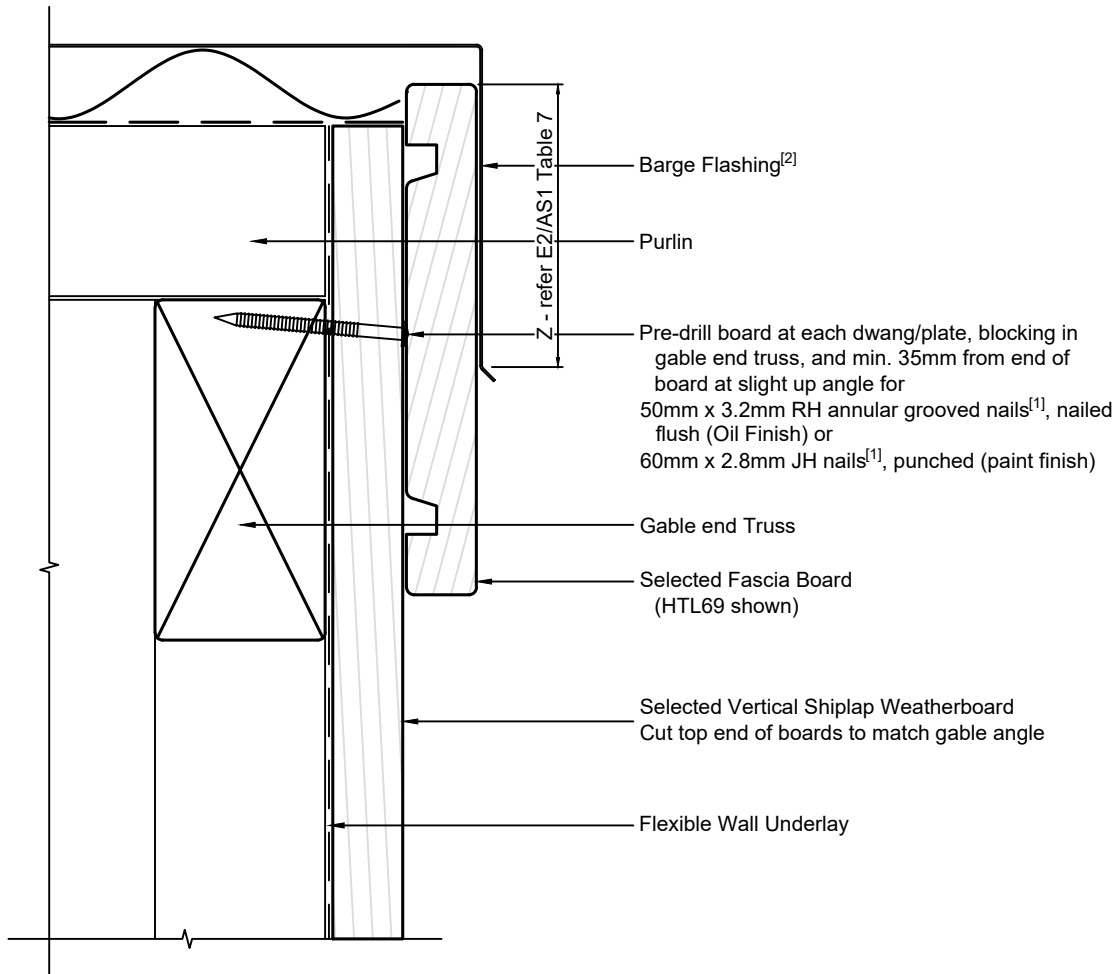
Ph: 03 544 6006
 Email: sales@htlgroup.co.nz
 Website: www.htlgroup.co.nz
 48 Beach Road, Richmond, Nelson 7020
 P O Box 3050, Richmond, Nelson 7050

**Vertical Shiplap Weatherboards
 Direct Fix - Flexible Underlay
 Barge Soffit detail**

1:2 @ A4 2021/01/26

Drawing No.
 1-1-851

Note:
 1/ Cladding Fixings to comply with E2/AS1 para. 9.4.3.1 & Tables 20 & 24
 2/ Barge Flashing to comply with E2/AS1 para. 8.4.12(f), Fig. 47 & Table 7



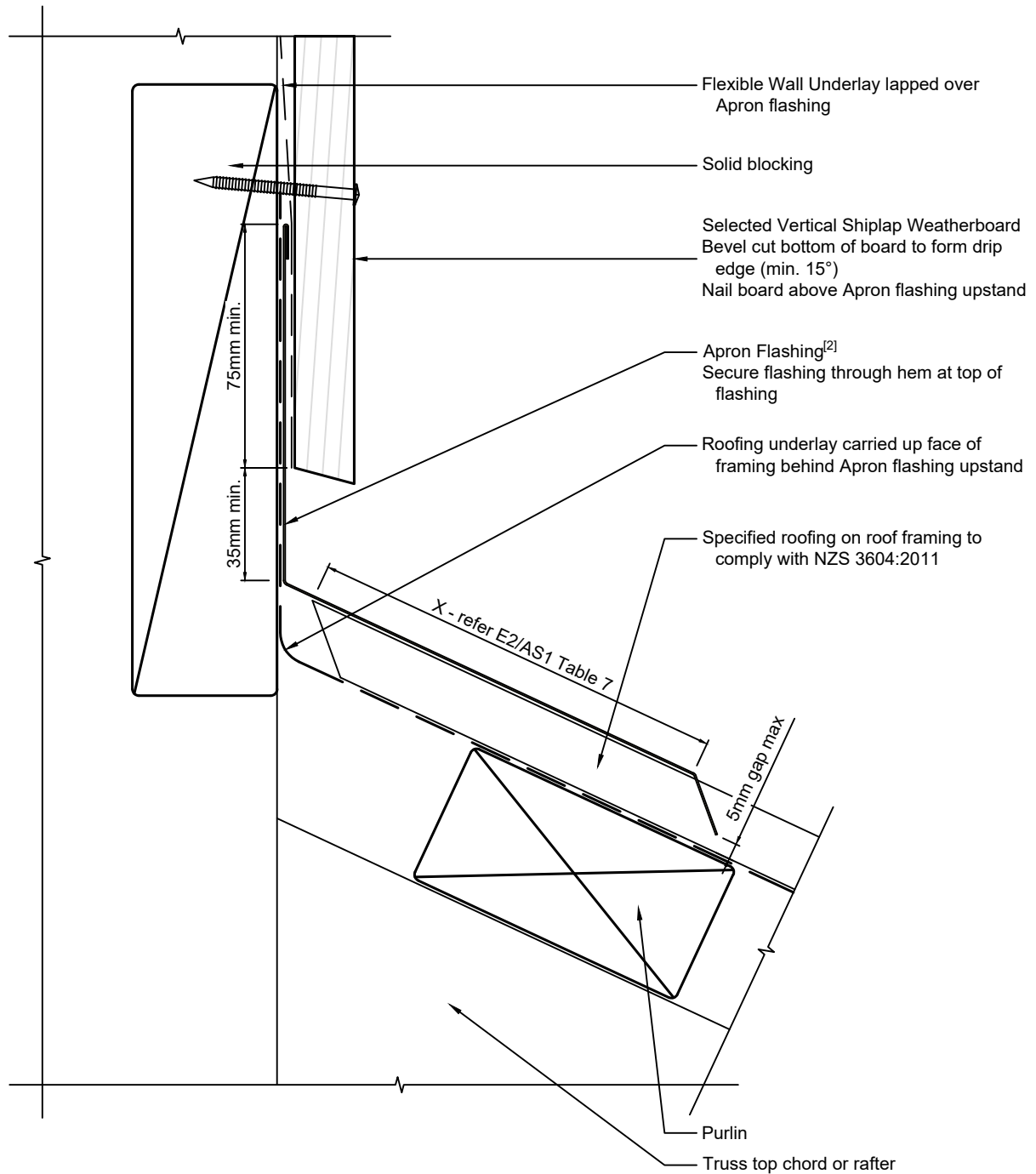
Ph: 03 544 6006
 Email: sales@htlgroup.co.nz
 Website: www.htlgroup.co.nz
 48 Beach Road, Richmond, Nelson 7020
 P O Box 3050, Richmond, Nelson 7050

**Vertical Shiplap Weatherboards
 Direct Fix - Flexible Underlay
 Flush Barge detail**

1:2 @ A4 2021/01/26

Drawing No.
 1-1-852

Note:
 1/ Cladding Fixings to comply with E2/AS1 para. 9.4.3.1 & Tables 20 & 24
 2/ Apron Flashing to comply with E2/AS1 para. 4.6.1.1, Fig 7 & Table 7



Ph: 03 544 6006
 Email: sales@htlgroup.co.nz
 Website: www.htlgroup.co.nz
 48 Beach Road, Richmond, Nelson 7020
 P O Box 3050, Richmond, Nelson 7050

Vertical Shiplap Weatherboards
Direct Fix - Flexible Underlay
Wall to Roof detail
Top of roofing

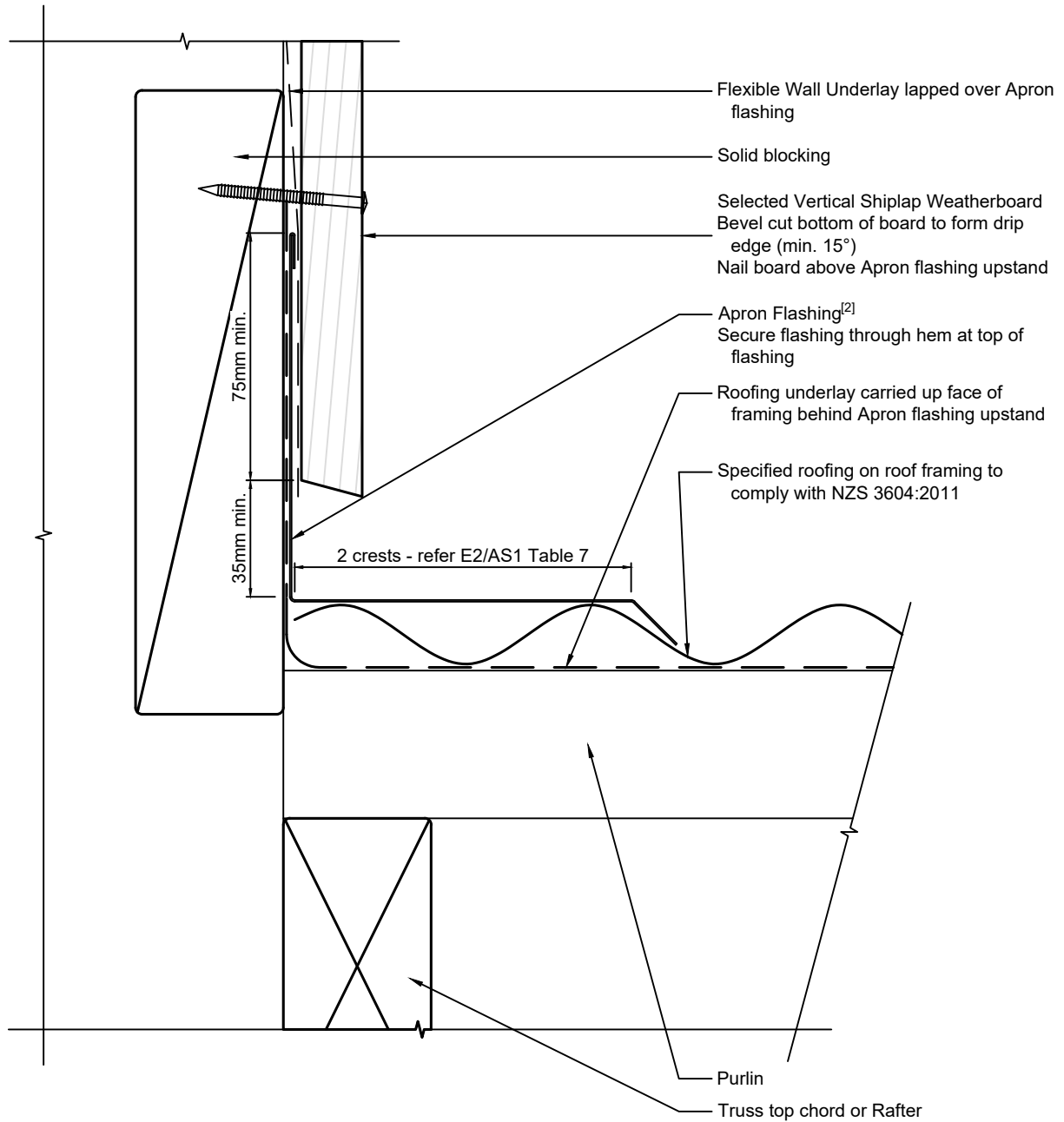
1:2 @ A4 2021/01/26

Drawing No.
 1-1-901

Note:

1/ Cladding Fixings to comply with E2/AS1 para. 9.4.3.1 & Tables 20 & 24

2/ Apron flashing to comply with E2/AS1 para. 4.6.1.1, Fig. 7 & Table 7



Ph: 03 544 6006
Email: sales@htlgroup.co.nz
Website: www.htlgroup.co.nz
48 Beach Road, Richmond, Nelson 7020
P O Box 3050, Richmond, Nelson 7050

Vertical Shiplap Weatherboards
Direct Fix - Flexible Underlay
Wall to Roof detail
Side of roofing

1:2 @ A4

2021/01/26

Drawing No.
1-1-902

Note:
1/ The exception is vertical
corrugated steel cladding

E2/AS1:2017 para. 6.0 requires that
Parapets have Cladding over a
drained cavity^[1], refer Detail 1-4-911



Ph: 03 544 6006
Email: sales@htlgroup.co.nz
Website: www.htlgroup.co.nz
48 Beach Road, Richmond, Nelson 7020
P O Box 3050, Richmond, Nelson 7050

**Vertical Shiplap Weatherboards
Direct Fix - Flexible Underlay
Parapet detail**

1:2 @ A4 | 2021/01/26

Drawing No.
1-1-911

Note:

E2/AS1:2017 para. 9.1.9.4 requires
that Inter-storey junctions are used
for Cladding over a drained cavity,
refer Detail 1-4-951



Ph: 03 544 6006
Email: sales@htlgroup.co.nz
Website: www.htlgroup.co.nz
48 Beach Road, Richmond, Nelson 7020
P O Box 3050, Richmond, Nelson 7050

**Vertical Shiplap Weatherboards
Direct Fix - Flexible Underlay
Inter-storey Break note**

1:2 @ A4 2021/01/26

Drawing No.
1-1-951

Note:

E2/AS1:2017 para. 9.1.9.4 requires
that Horizontal junctions are used for
Cladding over a drained cavity, refer
Detail 1-4-961



Ph: 03 544 6006
Email: sales@htlgroup.co.nz
Website: www.htlgroup.co.nz
48 Beach Road, Richmond, Nelson 7020
P O Box 3050, Richmond, Nelson 7050

**Vertical Shiplap Weatherboards
Direct Fix - Flexible Underlay
Horizontal Break note**

1:2 @ A4 2021/01/26

Drawing No.
1-1-961