

## Index

### Details for - Vertical Shiplap Weatherboards 20mm Cavity Batten - Flexible Underlay

1-4-001	Index
1-4-101	Nail Fixing
1-4-111	Penetrations
1-4-151	Meter Box - Bottom
1-4-152	Meter Box - Side
1-4-153	Meter Box - Head
1-4-211	Bottom of Wall - Timber Floor
1-4-221	Bottom of Wall - Concrete Floor
1-4-301	External Corner - Option A - Boxed Corner
1-4-302	External Corner - Option B - Square Corner Mould
1-4-303	External Corner - Option C - "V" Corner Mould
1-4-351	Internal Corner - Option A
1-4-352	Internal Corner - Option B
1-4-501	Door Sill
1-4-502	Door Jamb
1-4-503	Door Head
1-4-601	Window Sill
1-4-602	Window Jamb
1-4-603	Window Head
1-4-801	Eave Soffit
1-4-802	Flush Eave
1-4-851	Barge Soffit
1-4-852	Flush Barge
1-4-901	Roof to Wall - Top of roofing
1-4-902	Roof to Wall - Side of roofing
1-4-911	Parapet
1-4-951	Inter-storey Break
1-4-961	Horizontal Break

#### Notes:

Standards referred to in these Details;

- E2/AS1 External Moisture (Amendment 9 June 2019)
- NZS3604:2011 Timber-framed Buildings

All Details have been 'exploded' for clarity

Aluminium Joinery profiles used in these details are from "Nulook", change these profiles for the profiles of the Joinery company you are using



Ph: 03 544 6006  
Email: sales@htlgroup.co.nz  
Website: www.htlgroup.co.nz  
48 Beach Road, Richmond, Nelson 7020  
P O Box 3050, Richmond, Nelson 7050

Vertical Shiplap Weatherboards  
20mm Cavity Batten - Flexible Underlay  
Index

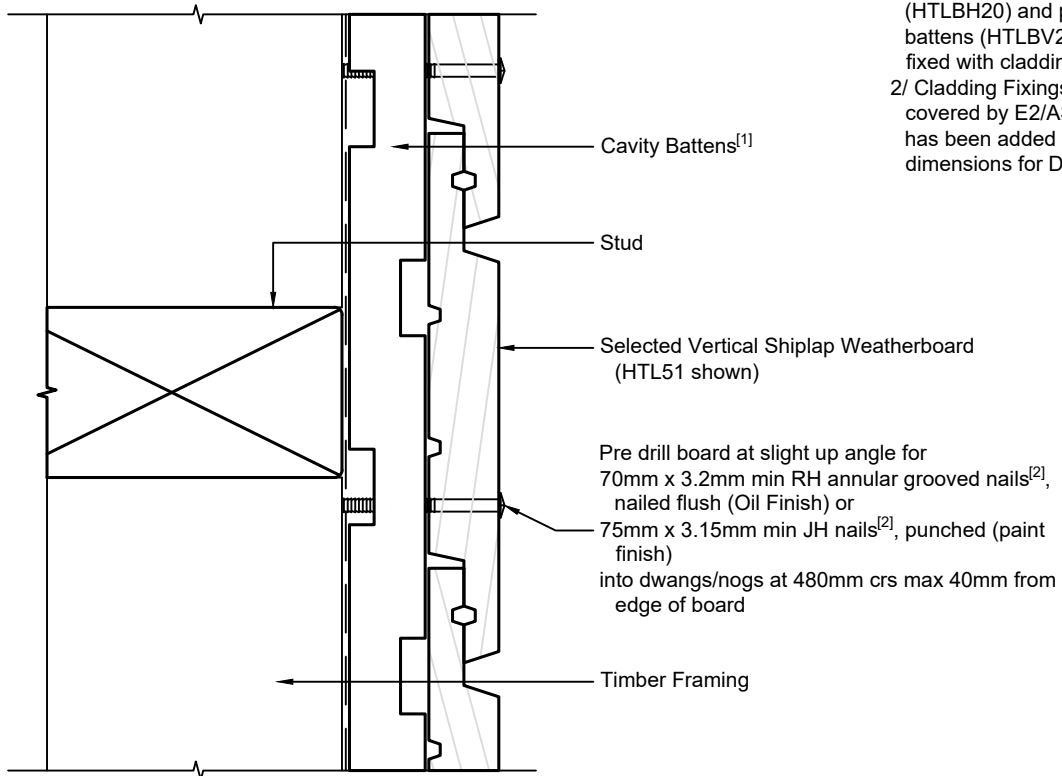
1:1 @ A4

2022/03/11

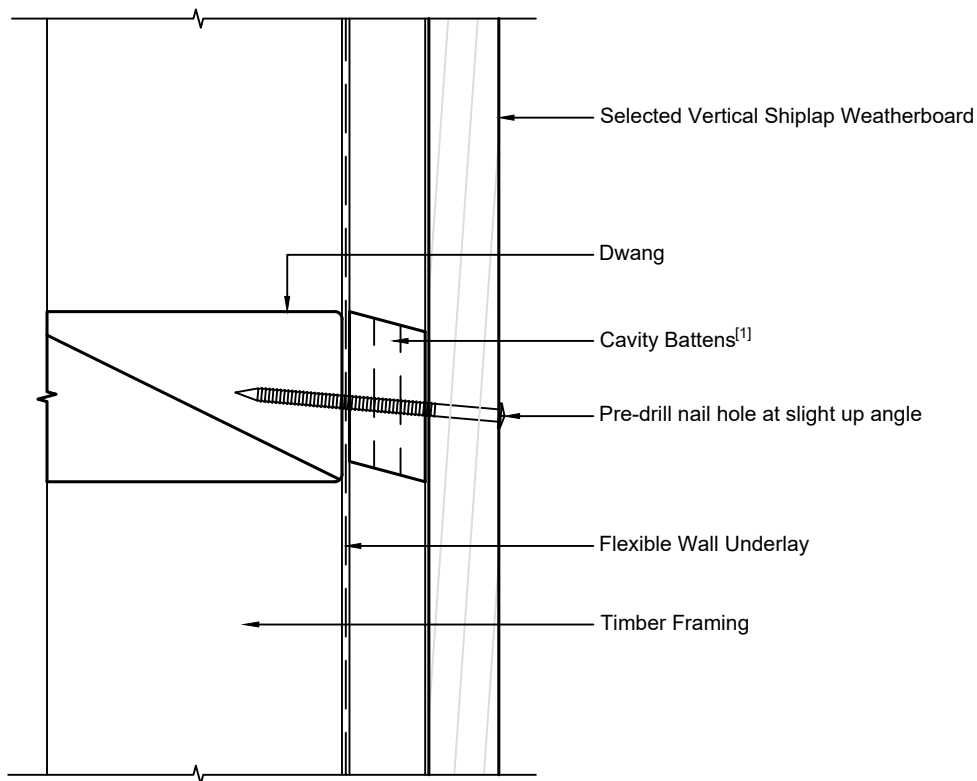
Drawing No.  
1-4-001

**Note:**

- 1/ Cavity Battens are Horizontal Castellated timber battens (HTLBH20) and plain vertical battens (HTLBV20), temporarily fixed with cladding nails
- 2/ Cladding Fixings are not currently covered by E2/AS1. Approx 20mm has been added to the E2/AS1 dimensions for Direct Fixed



Horizontal cross section



Vertical cross section



Ph: 03 544 6006  
Email: sales@htlgroup.co.nz  
Website: www.htlgroup.co.nz  
48 Beach Road, Richmond, Nelson 7020  
P O Box 3050, Richmond, Nelson 7050

**Vertical Shiplap Weatherboards  
20mm Cavity Batten - Flexible Underlay  
Nail Fixing detail**

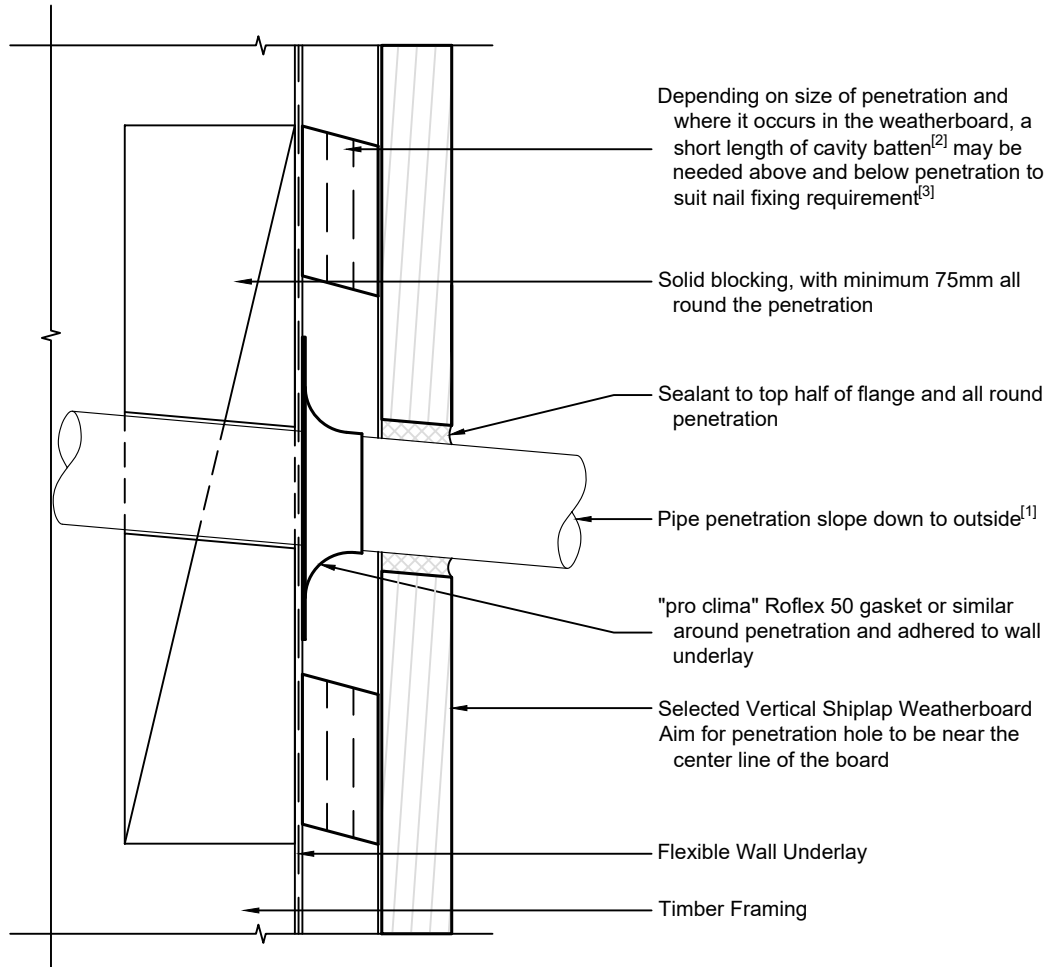
1:2 @ A4

2022/03/11

Drawing No.  
1-4-101

**Note:**

- 1/ Penetration to comply with E2/AS1 para. 9.1.9.3 & Fig. 68
- 2/ Cavity Battens are Horizontal Castellated timber battens (HTLBH20) and plain vertical battens (HTLBV20), temporarily fixed with cladding nails
- 3/ Cladding Fixings are not currently covered by E2/AS1. Approx 20mm has been added to the E2/AS1 dimensions for Direct Fixed



Ph: 03 544 6006  
Email: sales@htlgroup.co.nz  
Website: www.htlgroup.co.nz  
48 Beach Road, Richmond, Nelson 7020  
P O Box 3050, Richmond, Nelson 7050

**Vertical Shiplap Weatherboards  
20mm Cavity Batten - Flexible Underlay  
Penetrations detail**

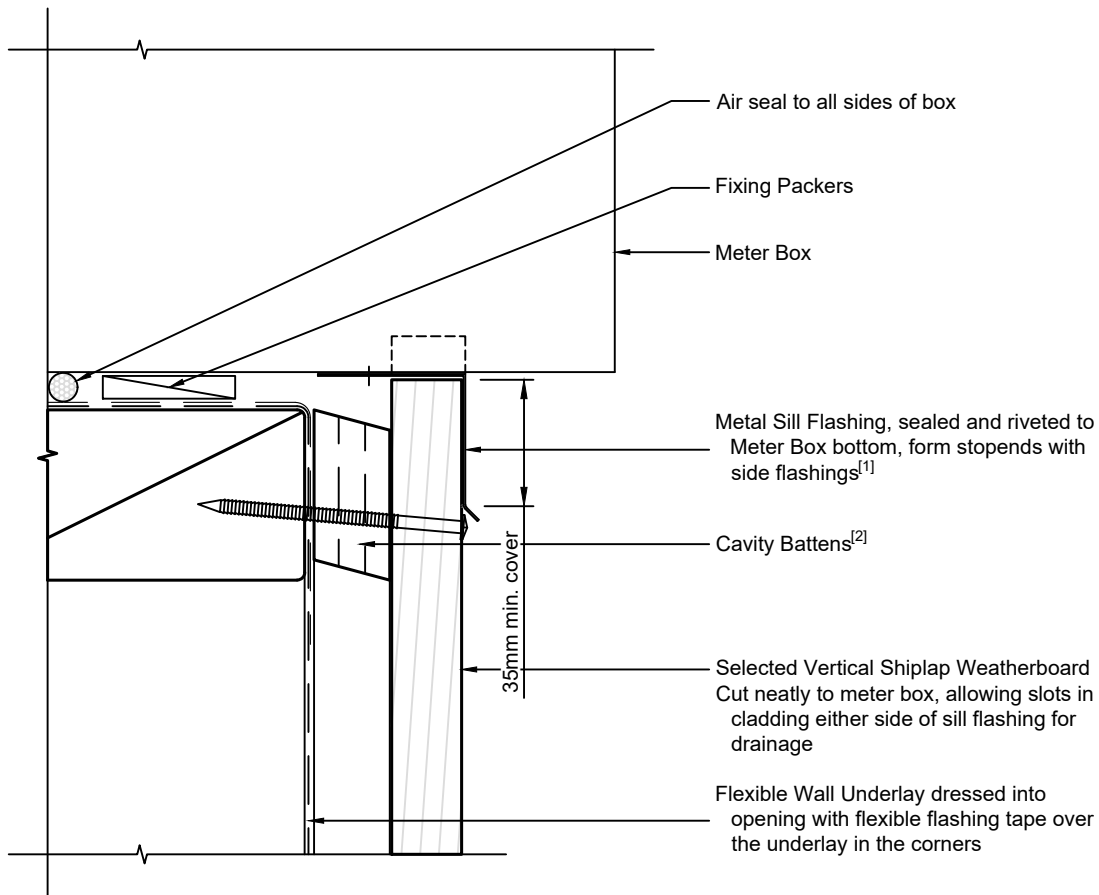
1:2 @ A4

2022/03/11

Drawing No.  
1-4-111

**Note:**

- 1/ To comply with E2/AS1 para. 9.1.9.3
- 2/ Cavity Battens are Horizontal Castellated timber battens (HTLBH20) and plain vertical battens (HTLBV20), temporarily fixed with cladding nails
- 3/ Cladding Fixings are not currently covered by E2/AS1. Approx 20mm has been added to the E2/AS1 dimensions for Direct Fixed



Ph: 03 544 6006  
Email: sales@htlgroup.co.nz  
Website: www.htlgroup.co.nz  
48 Beach Road, Richmond, Nelson 7020  
P O Box 3050, Richmond, Nelson 7050

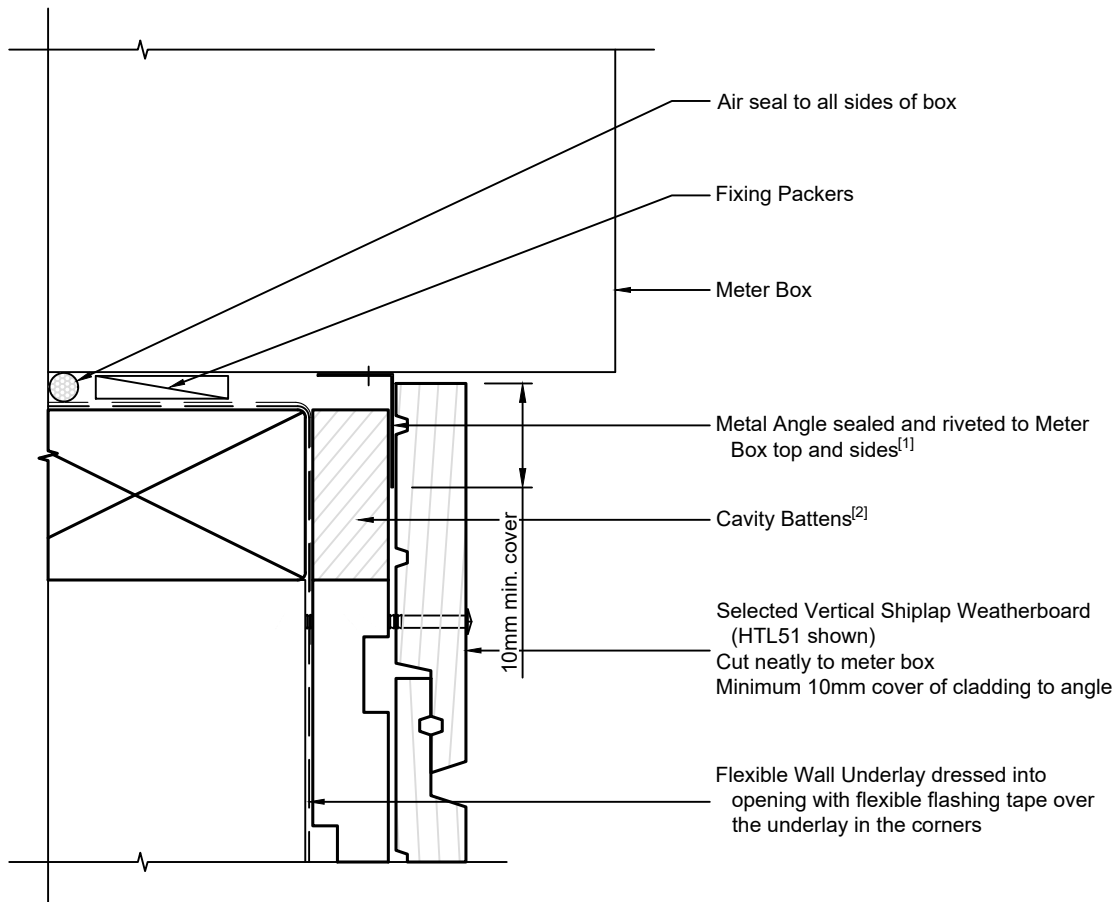
**Vertical Shiplap Weatherboards  
20mm Cavity Batten - Flexible Underlay  
Meter Box - Bottom detail**

1:2 @ A4 2022/03/11

Drawing No.  
1-4-151

**Note:**

- 1/ To comply with E2/AS1 para. 9.1.9.3
- 2/ Cavity Battens are Horizontal Castellated timber battens (HTLBH20) and plain vertical battens (HTLBV20), temporarily fixed with cladding nails
- 3/ Cladding Fixings are not currently covered by E2/AS1. Approx 20mm has been added to the E2/AS1 dimensions for Direct Fixed



Ph: 03 544 6006  
 Email: sales@htlgroup.co.nz  
 Website: www.htlgroup.co.nz  
 48 Beach Road, Richmond, Nelson 7020  
 P O Box 3050, Richmond, Nelson 7050

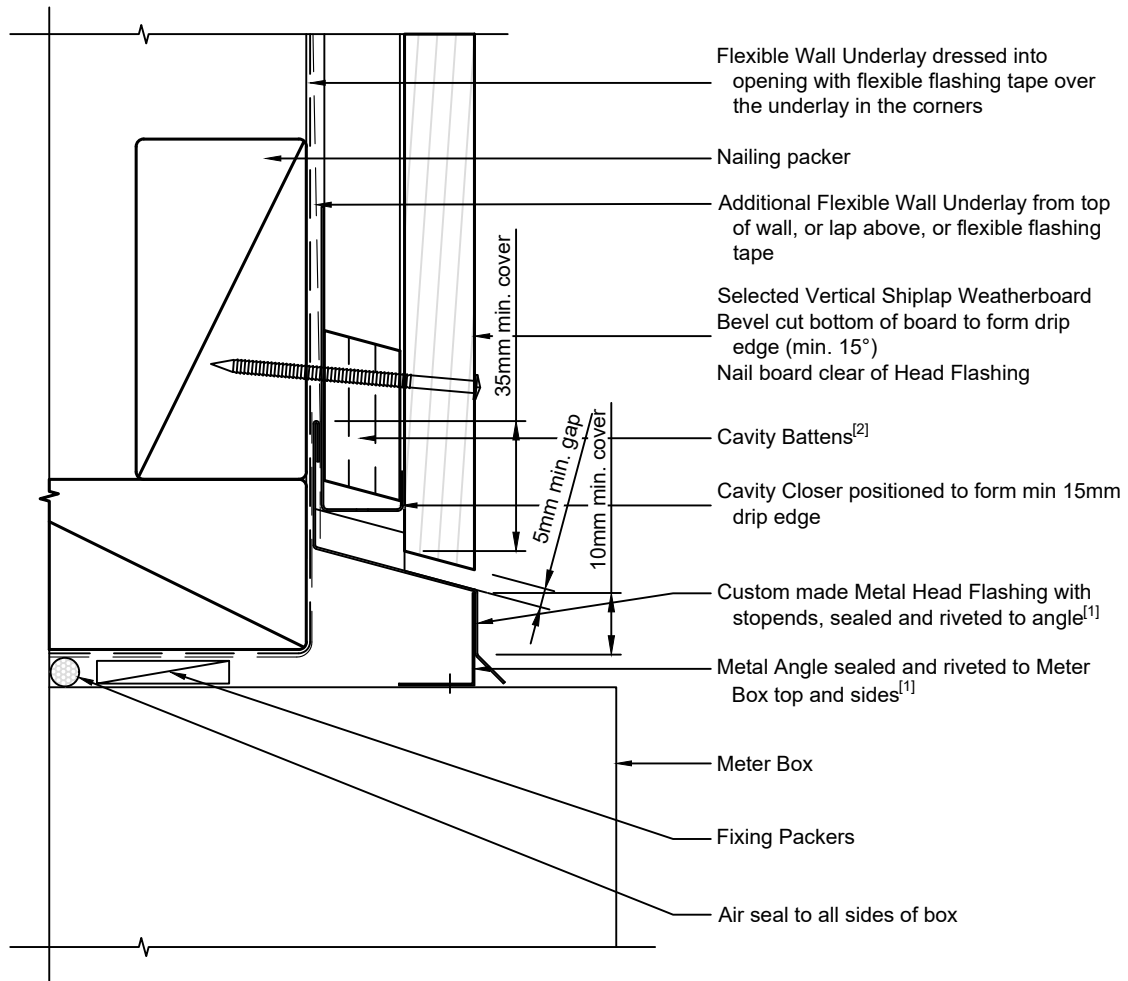
**Vertical Shiplap Weatherboards**  
**20mm Cavity Batten - Flexible Underlay**  
**Meter Box - Side detail**

1:2 @ A4    2022/03/11

Drawing No.  
 1-4-152

**Note:**

- 1/ To comply with E2/AS1 para. 9.1.9.3 & Fig. 69
- 2/ Cavity Battens are Horizontal Castellated timber battens (HTLBH20) and plain vertical battens (HTLBV20), temporarily fixed with cladding nails
- 3/ Cladding Fixings are not currently covered by E2/AS1. Approx 20mm has been added to the E2/AS1 dimensions for Direct Fixed



Ph: 03 544 6006  
 Email: sales@htlgroup.co.nz  
 Website: www.htlgroup.co.nz  
 48 Beach Road, Richmond, Nelson 7020  
 P O Box 3050, Richmond, Nelson 7050

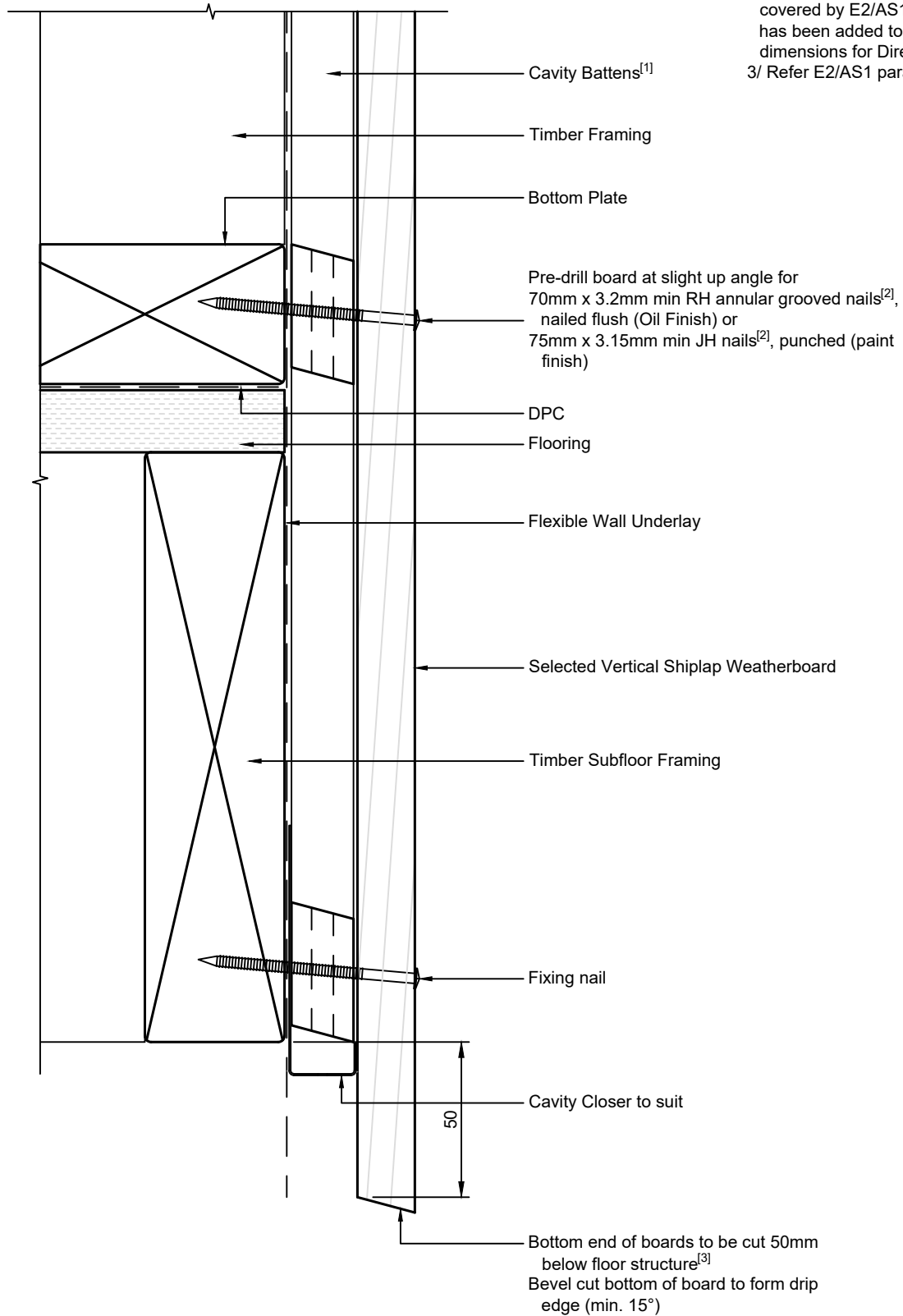
**Vertical Shiplap Weatherboards  
 20mm Cavity Batten - Flexible Underlay  
 Meter Box - Head detail**

1:2 @ A4    2022/03/11

Drawing No.  
 1-4-153

**Note:**

- 1/ Cavity Battens are Horizontal Castellated timber battens (HTLBH20) and plain vertical battens (HTLBV20), temporarily fixed with cladding nails
- 2/ Cladding Fixings are not currently covered by E2/AS1. Approx 20mm has been added to the E2/AS1 dimensions for Direct Fixed
- 3/ Refer E2/AS1 para. 9.1.3.5(a)



Ph: 03 544 6006  
 Email: sales@htlgroup.co.nz  
 Website: www.htlgroup.co.nz  
 48 Beach Road, Richmond, Nelson 7020  
 P O Box 3050, Richmond, Nelson 7050

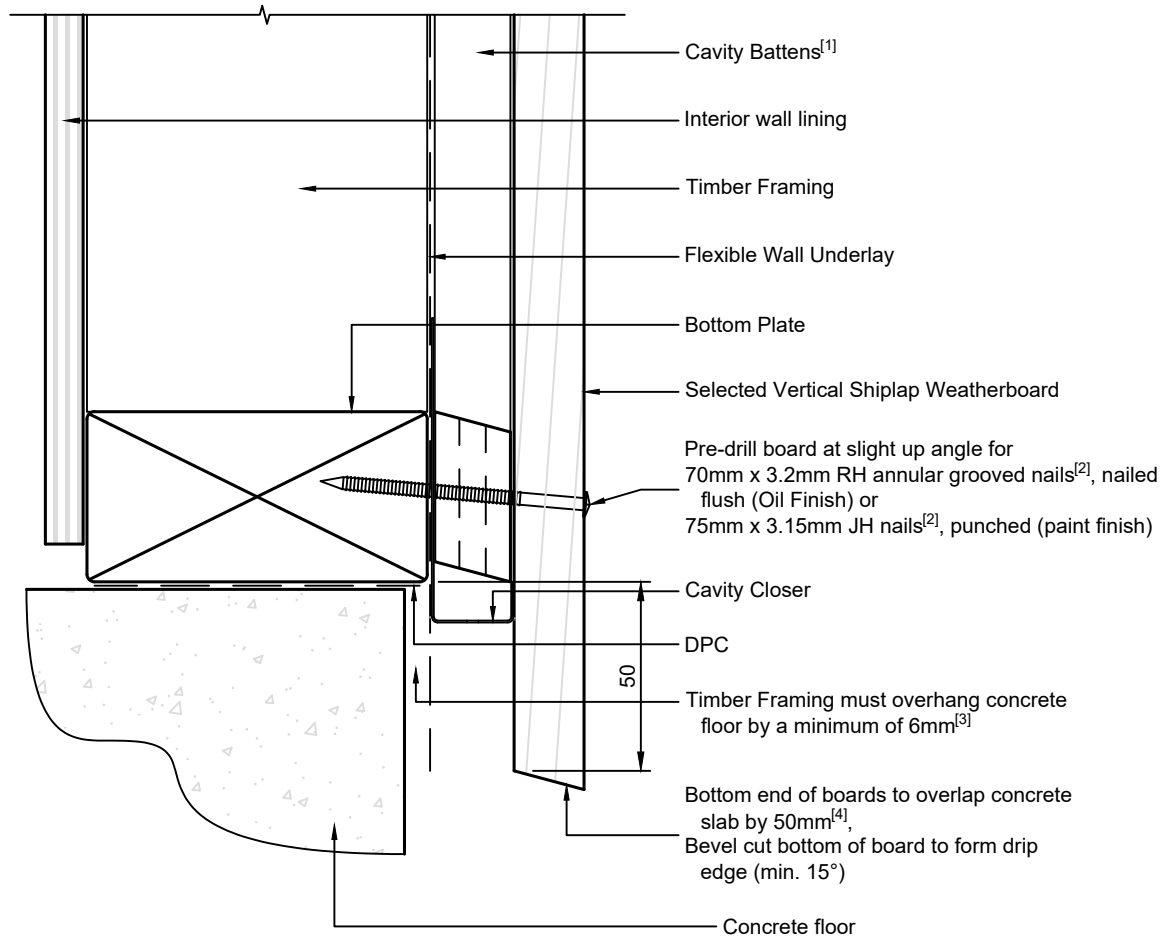
**Vertical Shiplap Weatherboards**  
**20mm Cavity Batten - Flexible Underlay**  
**Bottom of Wall detail**  
**Timber Floor**

1:2 @ A4 2022/03/11

Drawing No.  
1-4-211

**Note:**

- 1/ Cavity Battens are Horizontal Castellated timber battens (HTLBH20) and plain vertical battens (HTLBV20), temporarily fixed with cladding nails
- 2/ Cladding Fixings are not currently covered by E2/AS1. Approx 20mm has been added to the E2/AS1 dimensions for Direct Fixed
- 3/ Refer E2/AS1 para. 9.1.3.3(c)
- 4/ Refer E2/AS1 para. 9.1.3.3(b)



Ph: 03 544 6006  
 Email: sales@htlgroup.co.nz  
 Website: www.htlgroup.co.nz  
 48 Beach Road, Richmond, Nelson 7020  
 P O Box 3050, Richmond, Nelson 7050

**Vertical Shiplap Weatherboards**  
**20mm Cavity Batten - Flexible Underlay**  
**Bottom of Wall detail**  
**Concrete Floor**

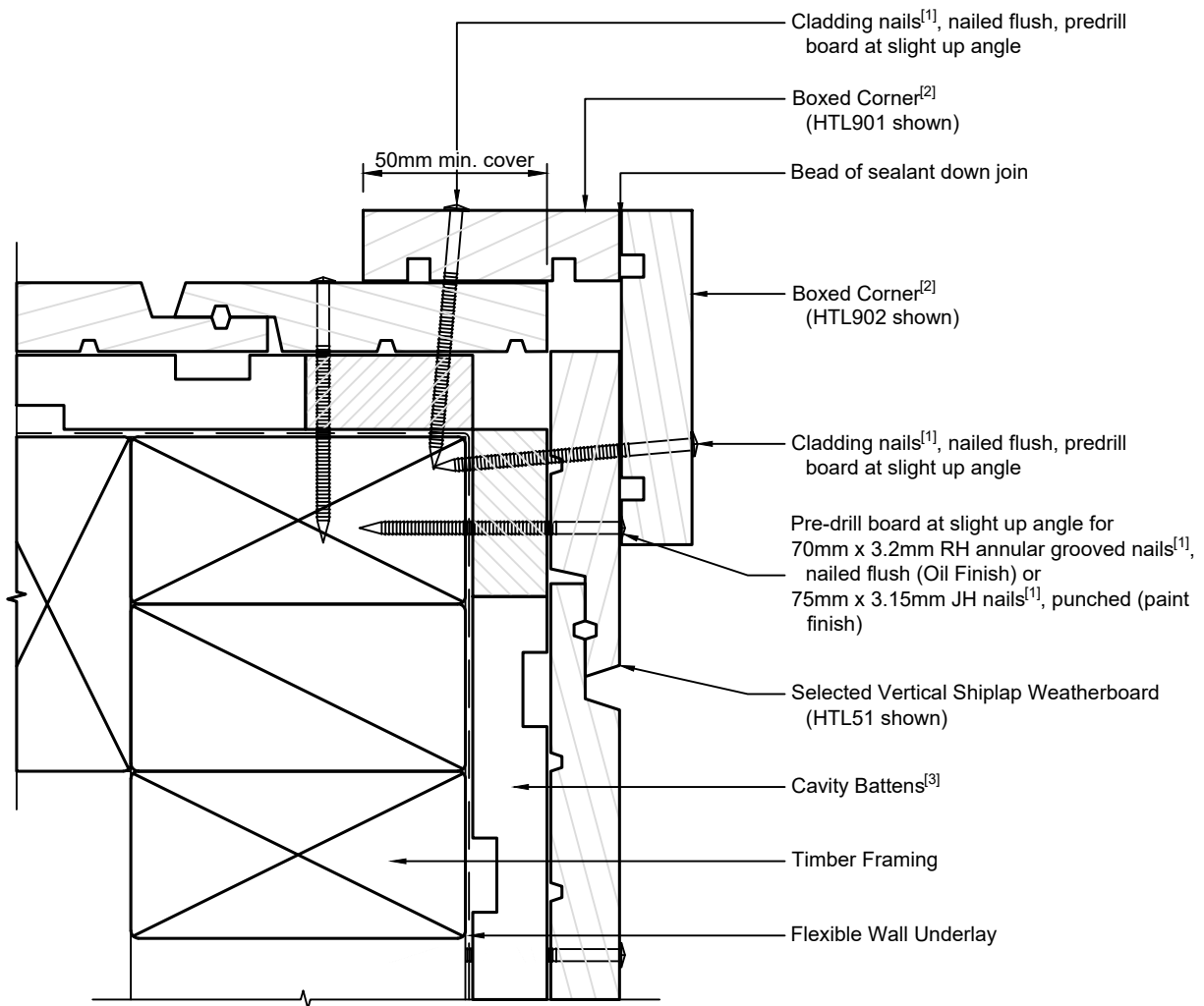
1:2 @ A4 2022/03/11

Drawing No.  
 1-4-221



**Note:**

- 1/ Cladding Fixings are not currently covered by E2/AS1. Approx 20mm has been added to the E2/AS1 dimensions for Direct Fixed
- 2/ The minimum cover of Boxed Corner boards to comply with E2/AS1 para. 9.4.5.3(a) & Fig. 80
- 3/ Cavity Battens are Horizontal Castellated timber battens (HTLBH20) and plain vertical battens (HTLBV20), temporarily fixed with cladding nails



Option A



Ph: 03 544 6006  
 Email: sales@htlgroup.co.nz  
 Website: www.htlgroup.co.nz  
 48 Beach Road, Richmond, Nelson 7020  
 P O Box 3050, Richmond, Nelson 7050

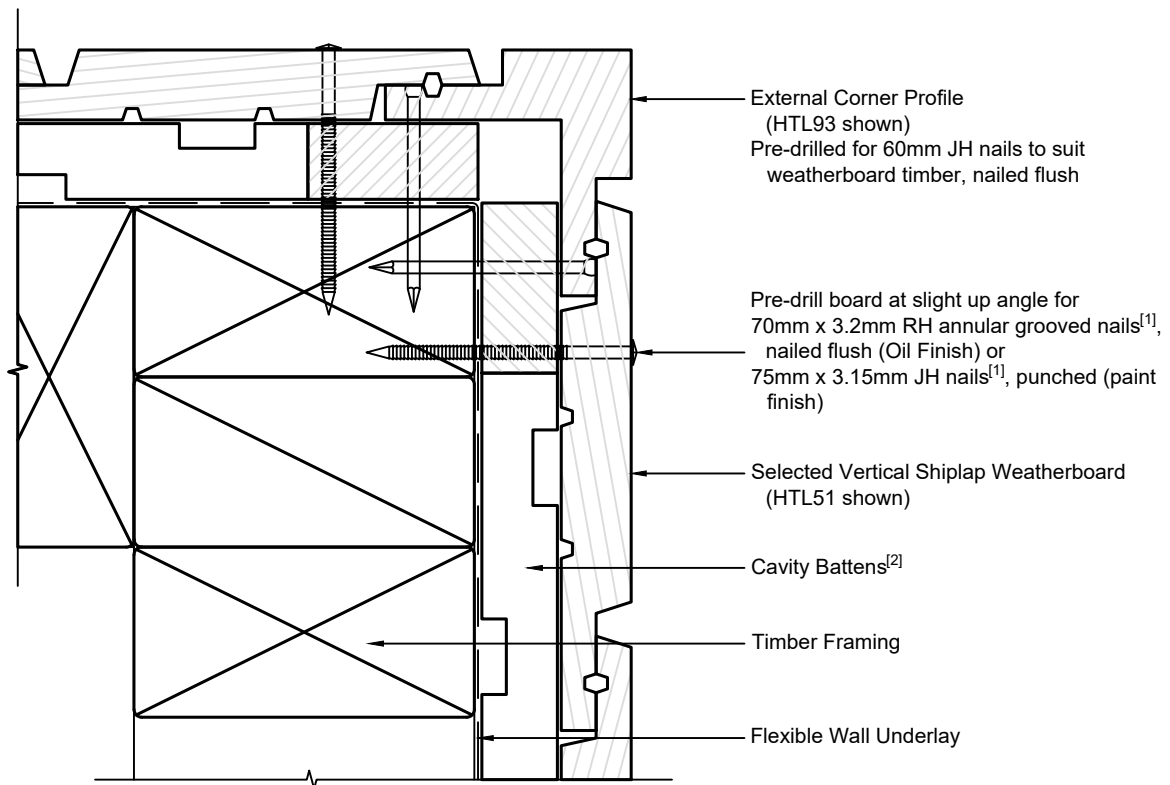
**Vertical Shiplap Weatherboards**  
**20mm Cavity Batten - Flexible Underlay**  
**External Corner detail**  
**Option A - Boxed Corner**

1:2 @ A4 2022/03/11

Drawing No.  
1-4-301

**Note:**

- 1/ Cladding Fixings are not currently covered by E2/AS1. Approx 20mm has been added to the E2/AS1 dimensions for Direct Fixed
- 2/ Cavity Battens are Horizontal Castellated timber battens (HTLBH20) and plain vertical battens (HTLBV20), temporarily fixed with cladding nails



Option B



Ph: 03 544 6006  
Email: sales@htlgroup.co.nz  
Website: www.htlgroup.co.nz  
48 Beach Road, Richmond, Nelson 7020  
P O Box 3050, Richmond, Nelson 7050

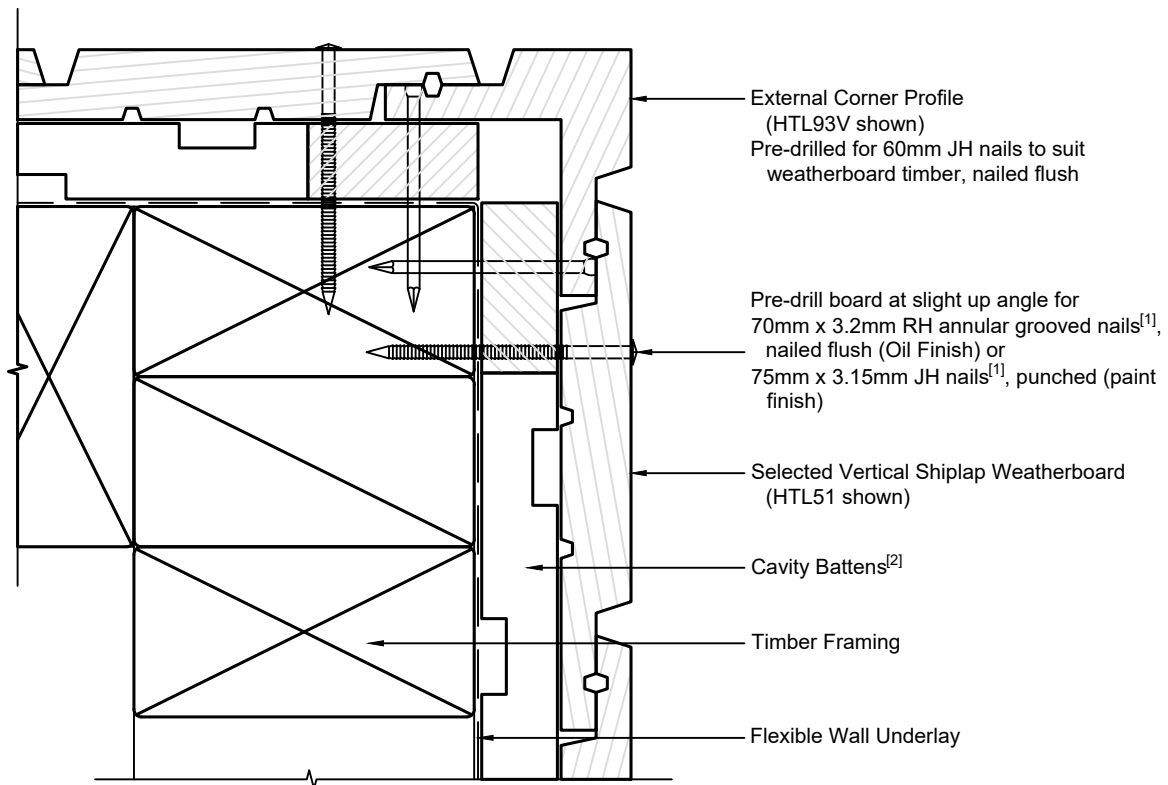
**Vertical Shiplap Weatherboards**  
**20mm Cavity Batten - Flexible Underlay**  
**External Corner detail**  
**Option B - Sq Corner Mould**

1:2 @ A4 2022/03/11

Drawing No.  
1-4-302

**Note:**

- 1/ Cladding Fixings are not currently covered by E2/AS1. Approx 20mm has been added to the E2/AS1 dimensions for Direct Fixed
- 2/ Cavity Battens are Horizontal Castelled timber battens (HTLBH20) and plain vertical battens (HTLBV20), temporarily fixed with cladding nails



Option C



Ph: 03 544 6006  
Email: sales@htlgroup.co.nz  
Website: www.htlgroup.co.nz  
48 Beach Road, Richmond, Nelson 7020  
P O Box 3050, Richmond, Nelson 7050

**Vertical Shiplap Weatherboards**  
**20mm Cavity Batten - Flexible Underlay**  
**External Corner detail**  
**Option C - V Corner Mould**

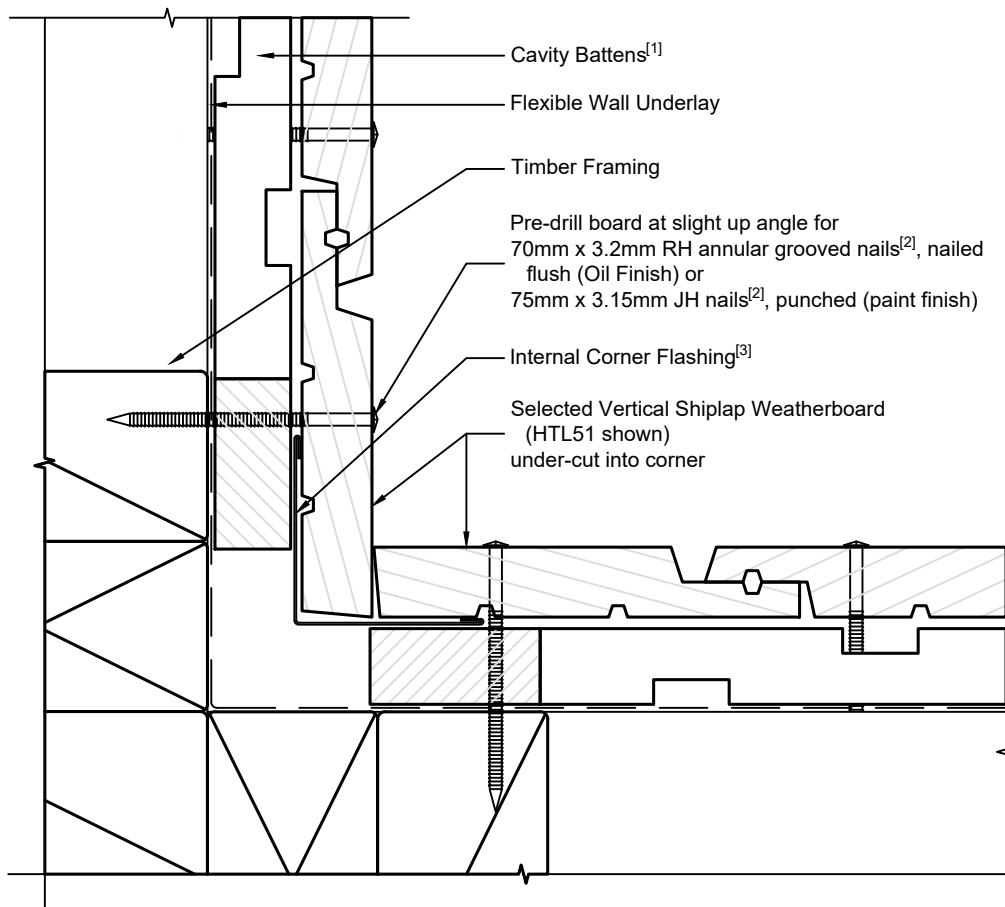
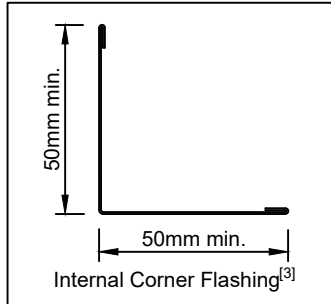
1:2 @ A4

2022/03/11

Drawing No.  
1-4-303

**Note:**

- 1/ Cavity Battens are Horizontal Castellated timber battens (HTLBH20) and plain vertical battens (HTLBV20), temporarily fixed with cladding nails
- 2/ Cladding Fixings are not currently covered by E2/AS1. Approx 20mm has been added to the E2/AS1 dimensions for Direct Fixed
- 3/ Corner Flashing dimensions to comply with E2/AS1 para. 9.4.5.3(b) & Fig. 79(c) & Table 7



Option A



Ph: 03 544 6006  
 Email: sales@htlgroup.co.nz  
 Website: www.htlgroup.co.nz  
 48 Beach Road, Richmond, Nelson 7020  
 P O Box 3050, Richmond, Nelson 7050

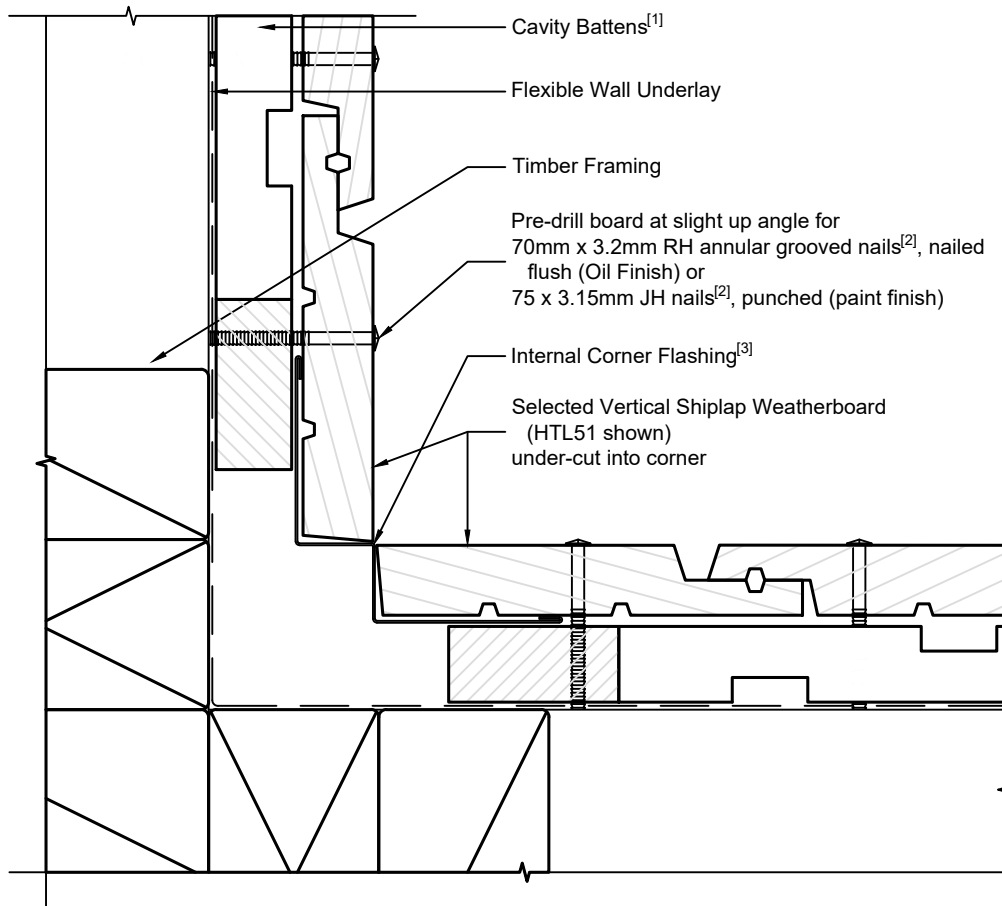
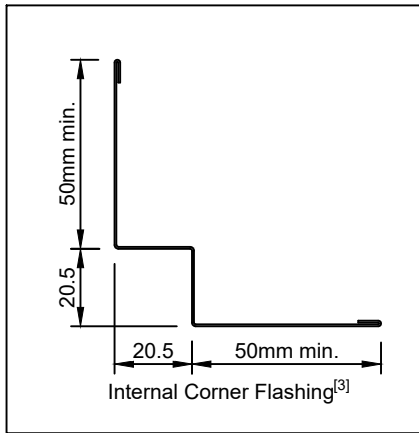
**Vertical Shiplap Weatherboards**  
**20mm Cavity Batten - Flexible Underlay**  
**Internal Corner detail**  
**Option A**

1:2 @ A4 2022/03/11

Drawing No.  
1-4-351

**Note:**

- 1/ Cavity Battens are Horizontal Castellated timber battens (HTLBH20) and plain vertical battens (HTLBV20), temporarily fixed with cladding nails
- 2/ Cladding Fixings are not currently covered by E2/AS1. Approx 20mm has been added to the E2/AS1 dimensions for Direct Fixed
- 3/ Corner Flashing dimensions to comply with E2/AS1 para. 9.4.5.3(b) & Fig. 79(d) & Table 7



Option B



Ph: 03 544 6006  
 Email: sales@htlgroup.co.nz  
 Website: www.htlgroup.co.nz  
 48 Beach Road, Richmond, Nelson 7020  
 P O Box 3050, Richmond, Nelson 7050

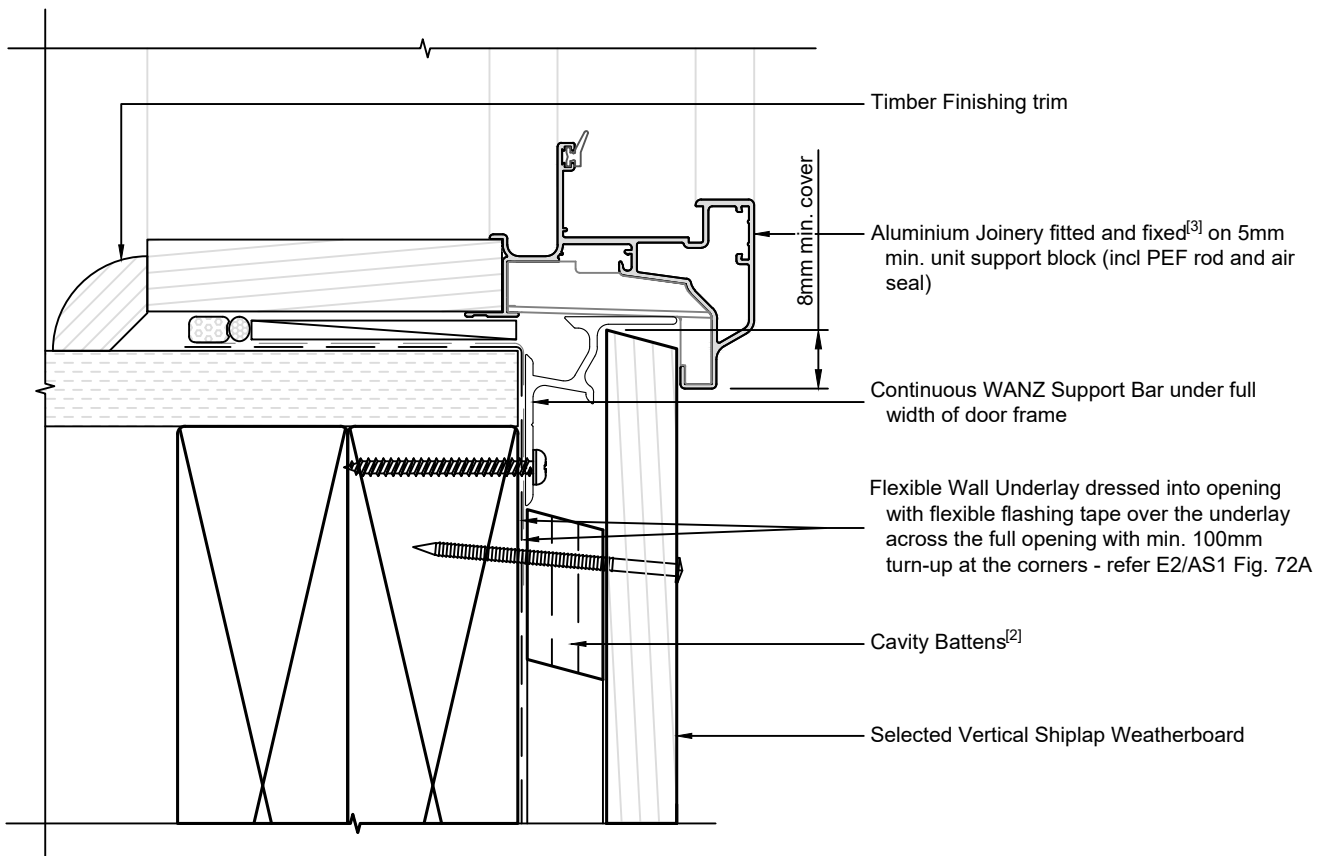
**Vertical Shiplap Weatherboards**  
**20mm Cavity Batten - Flexible Underlay**  
**Internal Corner detail**  
**Option B**

1:2 @ A4    2022/03/11

Drawing No.  
1-4-352

**Note:**

- 1/ To comply similar to E2/AS1, Fig. 83
- 2/ Cavity Battens are Horizontal Castellated timber battens (HTLBH20) and plain vertical battens (HTLBV20), temporarily fixed with cladding nails
- 3/ Joinery Fixing to comply with E2/AS1 para. 9.1.10.8 - pairs of 75mm x 3.15mm galv. JH nails or 8g x 65mm s/s screws, through reveals into framing at max 150mm from corners and at 450mm centres along sill
- 4/ Cladding Fixings are not currently covered by E2/AS1. Approx 20mm has been added to the E2/AS1 dimensions for Direct Fixed



Ph: 03 544 6006  
Email: sales@htlgroup.co.nz  
Website: www.htlgroup.co.nz  
48 Beach Road, Richmond, Nelson 7020  
P O Box 3050, Richmond, Nelson 7050

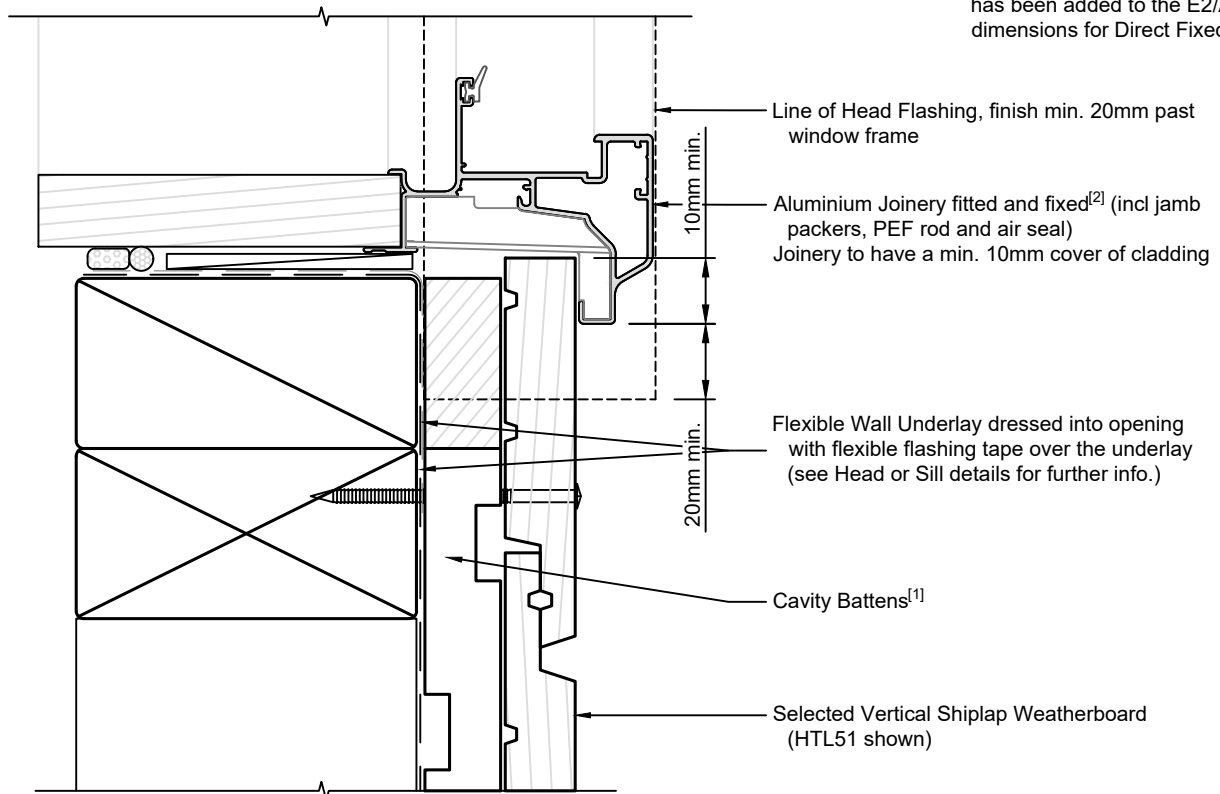
**Vertical Shiplap Weatherboards**  
**20mm Cavity Batten - Flexible Underlay**  
**Door Sill detail**

1:2 @ A4    2022/03/11

Drawing No.  
1-4-501

**Note:**

- 1/ Cavity Battens are Horizontal Castellated timber battens (HTLBH20) and plain vertical battens (HTLBV20), temporarily fixed with cladding nails
- 2/ Joinery Fixing to comply with E2/AS1 para. 9.1.10.8 - pairs of 75mm x 3.15mm galv. JH nails or 8g x 65mm s/s screws, through reveals into framing at max 150mm from corners and at 450mm centres along jamb
- 3/ To comply similar to E2/AS1 Fig. 83. Alternatively EITHER 1) If recess in boards occurs at window, fit closure piece OR 2) Depending on board layout, scribes or facing boards may be appropriate
- 4/ Cladding Fixings are not currently covered by E2/AS1. Approx 20mm has been added to the E2/AS1 dimensions for Direct Fixed



Ph: 03 544 6006  
Email: sales@htlgroup.co.nz  
Website: www.htlgroup.co.nz  
48 Beach Road, Richmond, Nelson 7020  
P O Box 3050, Richmond, Nelson 7050

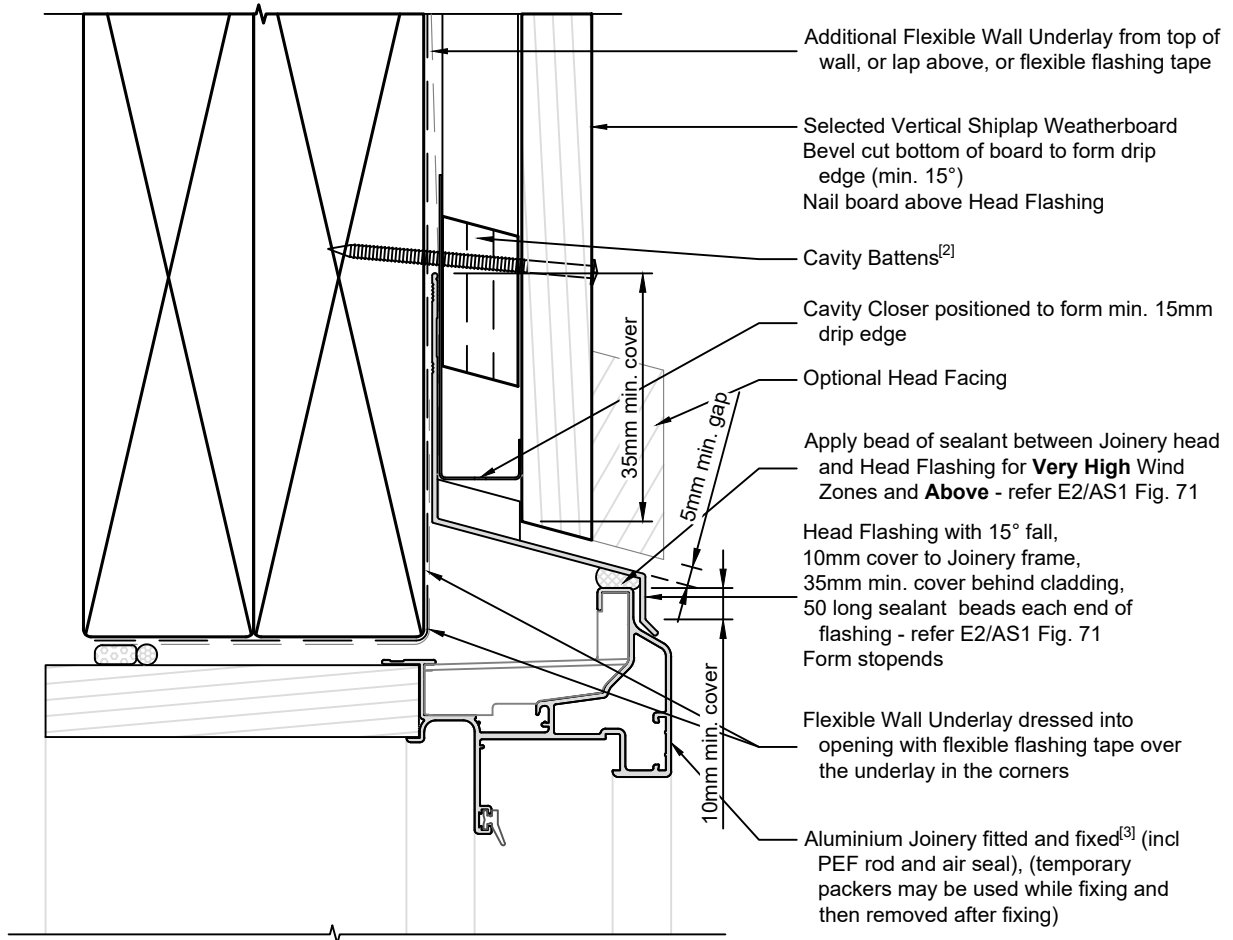
**Vertical Shiplap Weatherboards**  
**20mm Cavity Batten - Flexible Underlay**  
**Door Jamb detail**

1:2 @ A4 2022/03/11

Drawing No.  
1-4-502

**Note:**

- 1/ To comply similar to E2/AS1, Fig. 83
- 2/ Cavity Battens are Horizontal Castellated timber battens (HTLBH20) and plain vertical battens (HTLBV20), temporarily fixed with cladding nails
- 3/ Joinery Fixing to comply with E2/AS1 para. 9.1.10.8 - pairs of 75mm x 3.15mm galv. JH nails or 8g x 65mm s/s screws, through reveals into framing at max 150mm from corners and at 450mm centres along head
- 4/ Cladding Fixings are not currently covered by E2/AS1. Approx 20mm has been added to the E2/AS1 dimensions for Direct Fixed



Ph: 03 544 6006  
 Email: sales@htlgroup.co.nz  
 Website: www.htlgroup.co.nz  
 48 Beach Road, Richmond, Nelson 7020  
 P O Box 3050, Richmond, Nelson 7050

**Vertical Shiplap Weatherboards**  
**20mm Cavity Batten - Flexible Underlay**  
**Door Head detail**

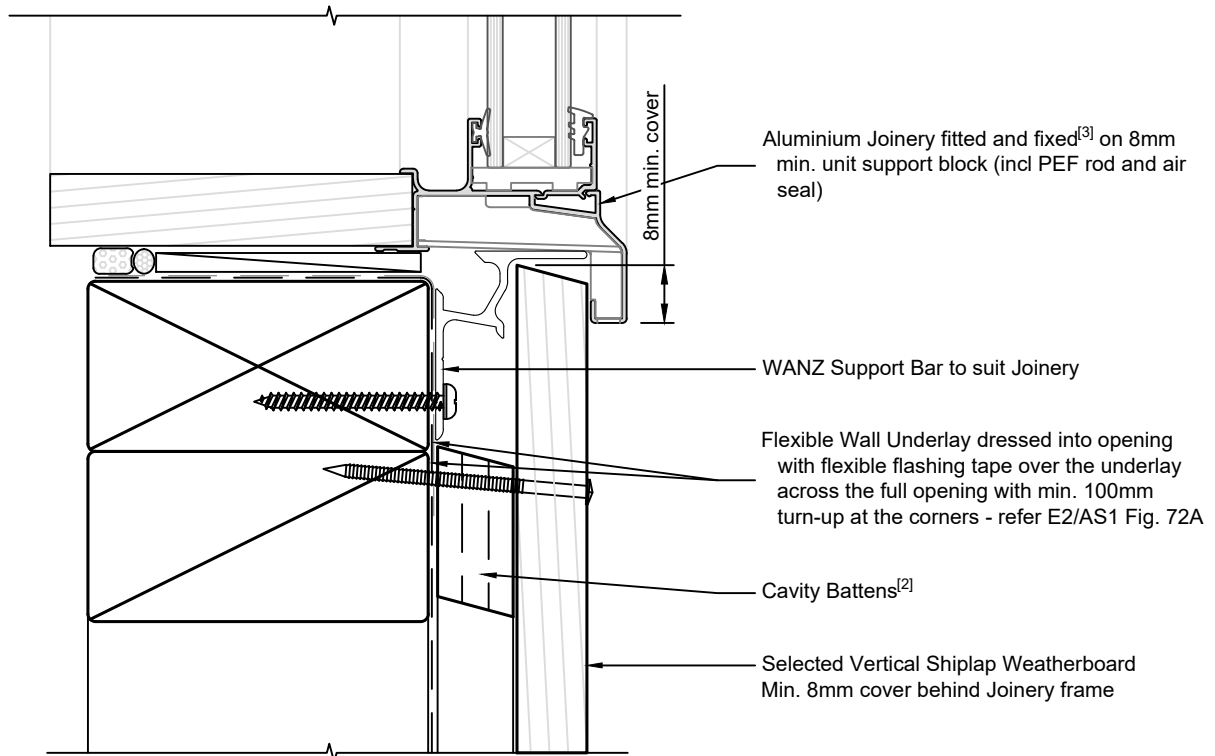
1:2 @ A4 2022/03/11

Drawing No.  
 1-4-503



**Note:**

- 1/ To comply similar to E2/AS1, Fig. 83
- 2/ Cavity Battens are Horizontal Castellated timber battens (HTLBH20) and plain vertical battens (HTLBV20), temporarily fixed with cladding nails
- 3/ Joinery Fixing to comply with E2/AS1 para. 9.1.10.8 - pairs of 75mm x 3.15mm galv. JH nails or 8g x 65mm s/s screws, through reveals into framing at max 150mm from corners and at 450mm centres along sill
- 4/ Cladding Fixings are not currently covered by E2/AS1. Approx 20mm has been added to the E2/AS1 dimensions for Direct Fixed



Ph: 03 544 6006  
Email: sales@htlgroup.co.nz  
Website: www.htlgroup.co.nz  
48 Beach Road, Richmond, Nelson 7020  
P O Box 3050, Richmond, Nelson 7050

**Vertical Shiplap Weatherboards**  
**20mm Cavity Batten - Flexible Underlay**  
**Window Sill detail**

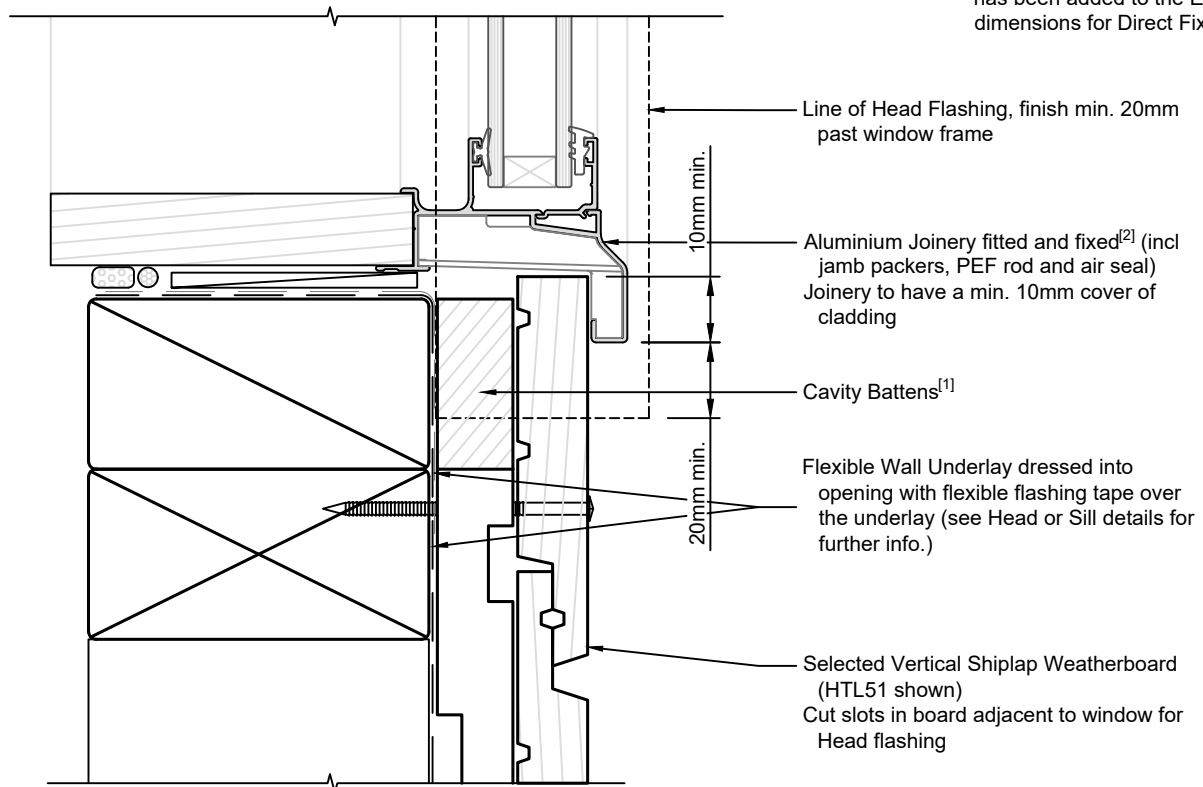
1:2 @ A4

2022/03/11

Drawing No.  
1-4-601

**Note:**

- 1/ Cavity Battens are Horizontal Castellated timber battens (HTLBH20) and plain vertical battens (HTLBV20), temporarily fixed with cladding nails
- 2/ Joinery Fixing to comply with E2/AS1 para. 9.1.10.8 - pairs of 75mm x 3.15mm galv. JH nails or 8g x 65mm s/s screws, through reveals into framing at max 150mm from corners and at 450mm centres along jamb
- 3/ To comply similar to E2/AS1 Fig.83. Alternatively EITHER 1) If recess in boards occurs at window, fit closure piece OR 2) Depending on board layout, scribes or facing boards may be appropriate
- 4/ Cladding Fixings are not currently covered by E2/AS1. Approx 20mm has been added to the E2/AS1 dimensions for Direct Fixed



Ph: 03 544 6006  
 Email: sales@htlgroup.co.nz  
 Website: www.htlgroup.co.nz  
 48 Beach Road, Richmond, Nelson 7020  
 P O Box 3050, Richmond, Nelson 7050

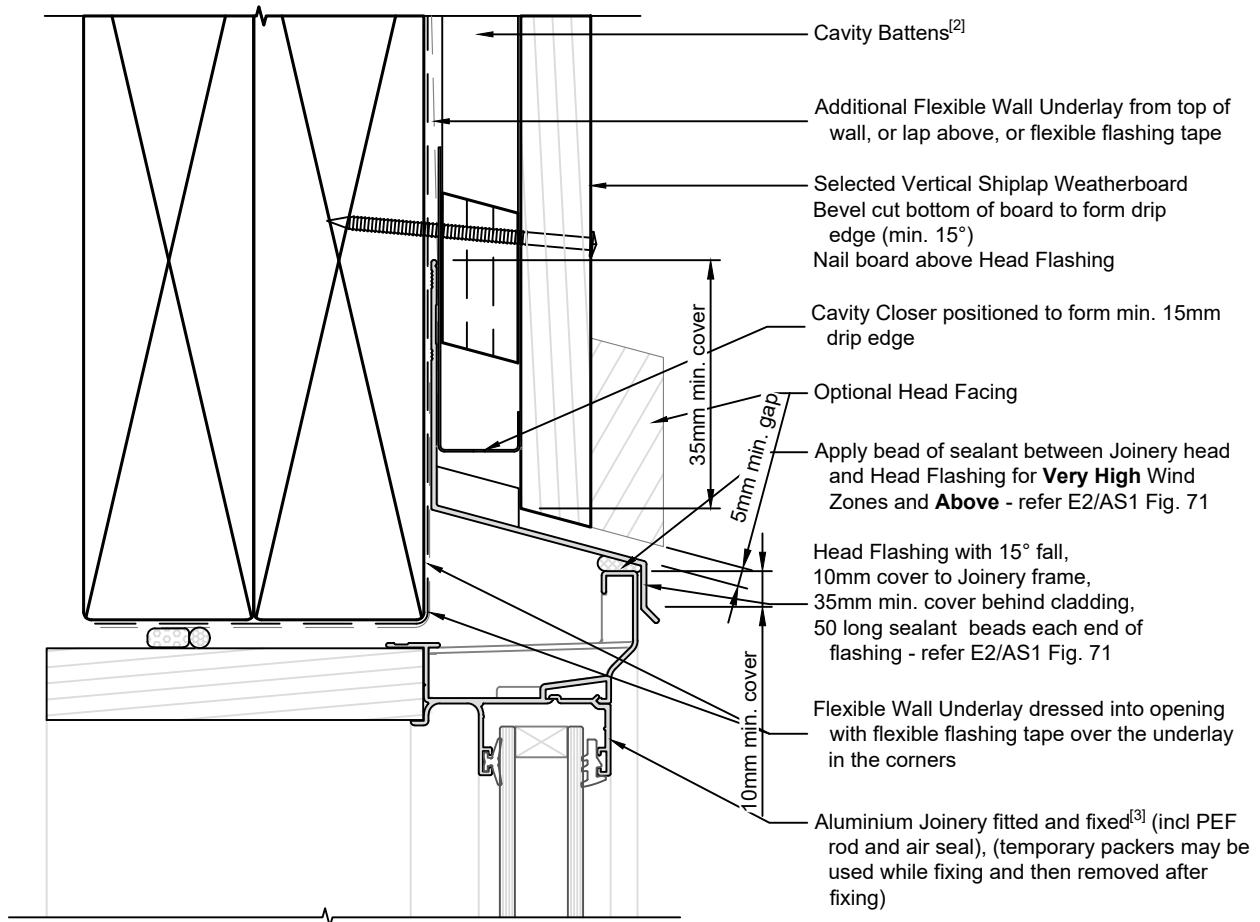
**Vertical Shiplap Weatherboards  
 20mm Cavity Batten - Flexible Underlay  
 Window Jamb detail**

1:2 @ A4    2022/03/11

Drawing No.  
 1-4-602

**Note:**

- 1/ To comply similar to E2/AS1, Fig. 83
- 2/ Cavity Battens are Horizontal Castellated timber battens (HTLBH20) and plain vertical battens (HTLBV20), temporarily fixed with cladding nails
- 3/ Joinery Fixing to comply with E2/AS1 para. 9.1.10.8 - pairs of 75mm x 3.15mm galv. JH nails or 8g x 65mm s/s screws, through reveals into framing at max 150mm from corners and at 450mm centres along head
- 4/ Cladding Fixings are not currently covered by E2/AS1. Approx 20mm has been added to the E2/AS1 dimensions for Direct Fixed



Ph: 03 544 6006  
 Email: sales@htlgroup.co.nz  
 Website: www.htlgroup.co.nz  
 48 Beach Road, Richmond, Nelson 7020  
 P O Box 3050, Richmond, Nelson 7050

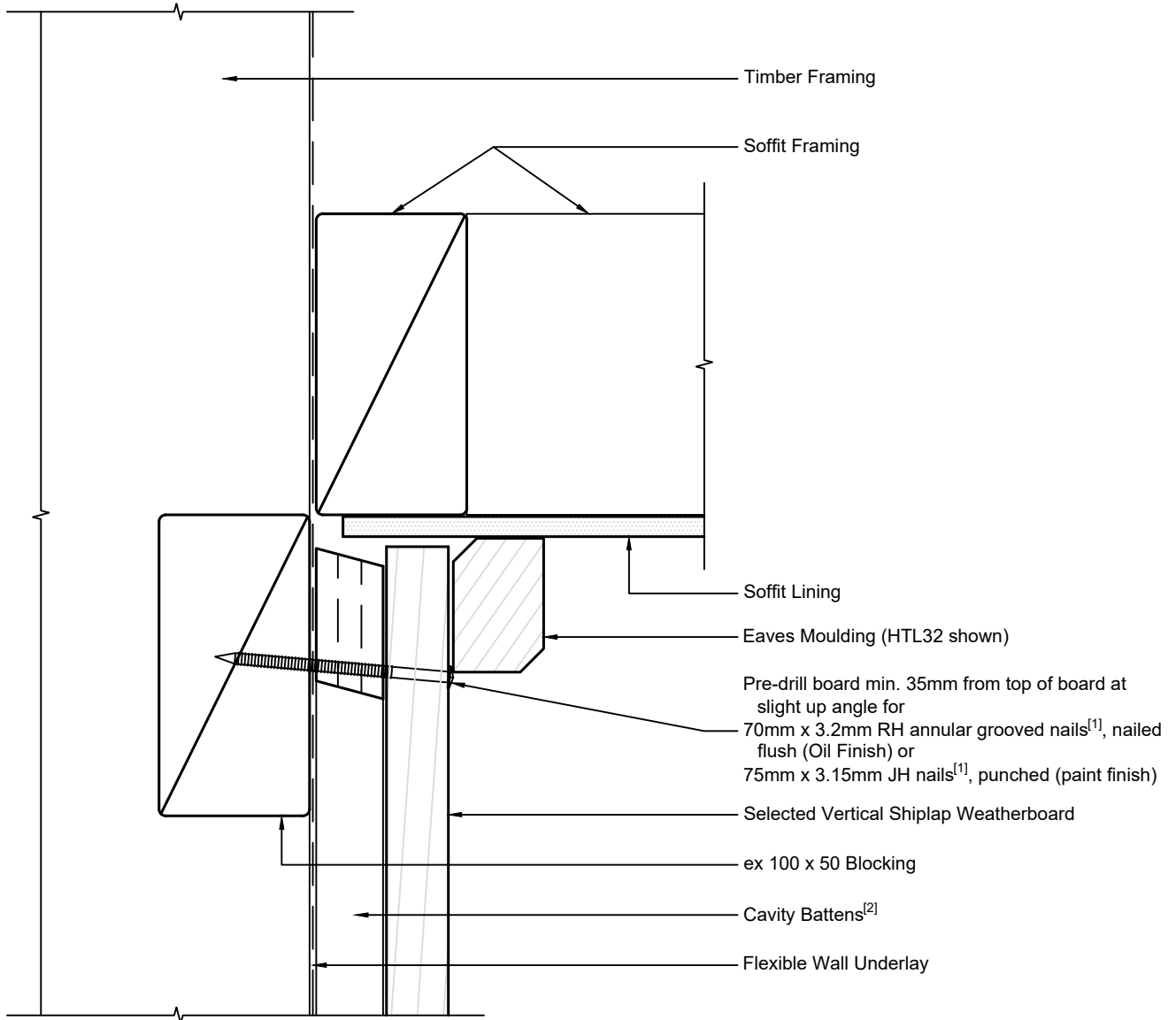
**Vertical Shiplap Weatherboards  
 20mm Cavity Batten - Flexible Underlay  
 Window Head detail**

1:2 @ A4 2022/03/11

Drawing No.  
 1-4-603

**Note:**

- 1/ Cladding Fixings are not currently covered by E2/AS1. Approx 20mm has been added to the E2/AS1 dimensions for Direct Fixed
- 2/ Cavity Battens are Horizontal Castellated timber battens (HTLBH20) and plain vertical battens (HTLBV20), temporarily fixed with cladding nails



Ph: 03 544 6006  
Email: sales@htlgroup.co.nz  
Website: www.htlgroup.co.nz  
48 Beach Road, Richmond, Nelson 7020  
P O Box 3050, Richmond, Nelson 7050

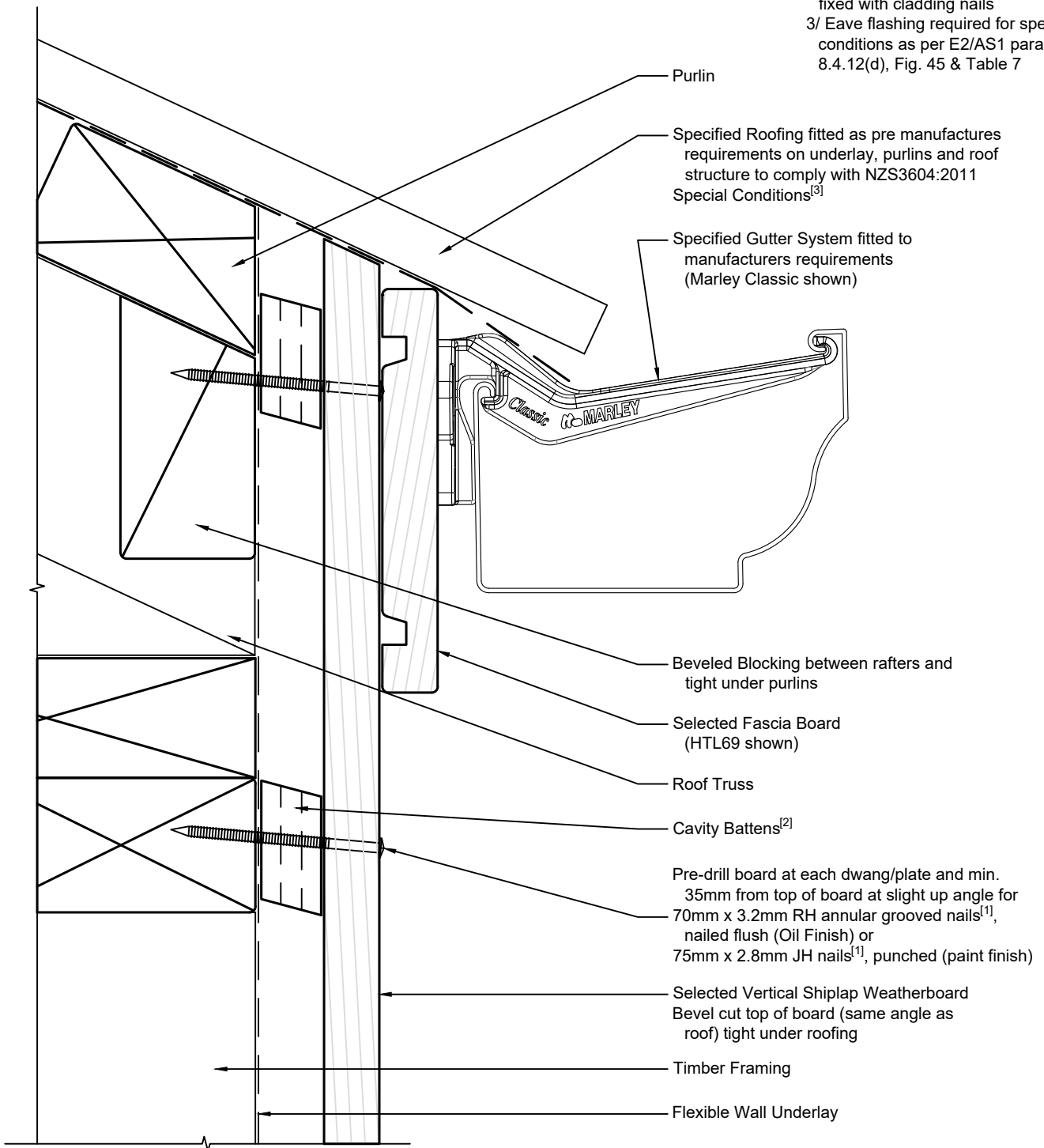
**Vertical Shiplap Weatherboards  
20mm Cavity Batten - Flexible Underlay  
Eaves Soffit detail**

1:2 @ A4 2022/03/11

Drawing No.  
1-4-801

**Note:**

- 1/ Cladding Fixings are not currently covered by E2/AS1. Approx 20mm has been added to the E2/AS1 dimensions for Direct Fixed
- 2/ Cavity Battens are Horizontal Castellated timber battens (HTLBH20) and plain vertical battens (HTLBV20), temporarily fixed with cladding nails
- 3/ Eave flashing required for special conditions as per E2/AS1 para. 8.4.12(d), Fig. 45 & Table 7



Ph: 03 544 6006  
 Email: sales@htlgroup.co.nz  
 Website: www.htlgroup.co.nz  
 48 Beach Road, Richmond, Nelson 7020  
 P O Box 3050, Richmond, Nelson 7050

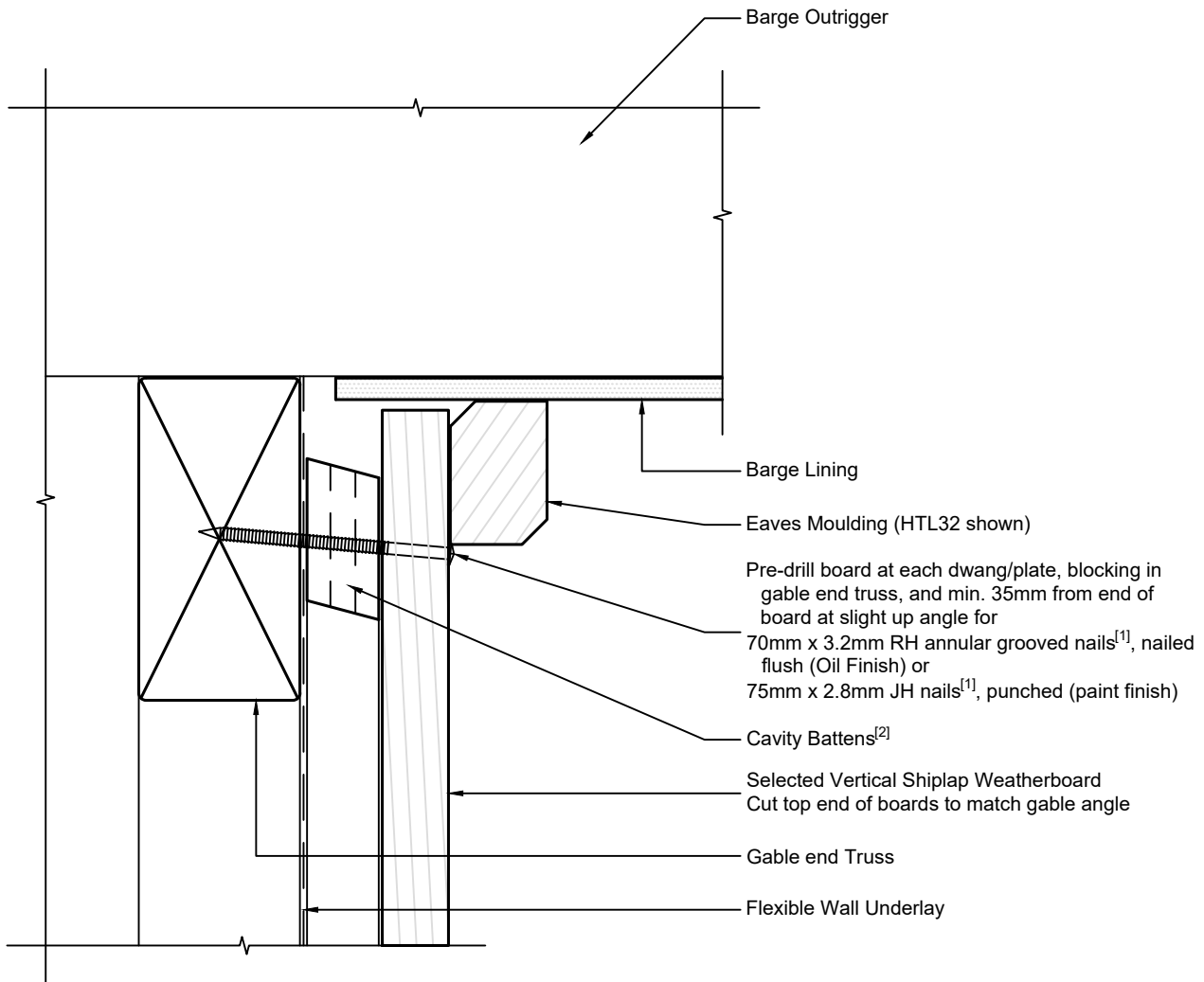
**Vertical Shiplap Weatherboards  
 20mm Cavity Batten - Flexible Underlay  
 Flush Eave detail**

1:2 @ A4 2022/03/11

Drawing No.  
 1-4-802

**Note:**

- 1/ Cladding Fixings are not currently covered by E2/AS1. Approx 20mm has been added to the E2/AS1 dimensions for Direct Fixed
- 2/ Cavity Battens are Horizontal Castellated timber battens (HTLBH20) and plain vertical battens (HTLBV20), temporarily fixed with cladding nails



Ph: 03 544 6006  
Email: sales@htlgroup.co.nz  
Website: www.htlgroup.co.nz  
48 Beach Road, Richmond, Nelson 7020  
P O Box 3050, Richmond, Nelson 7050

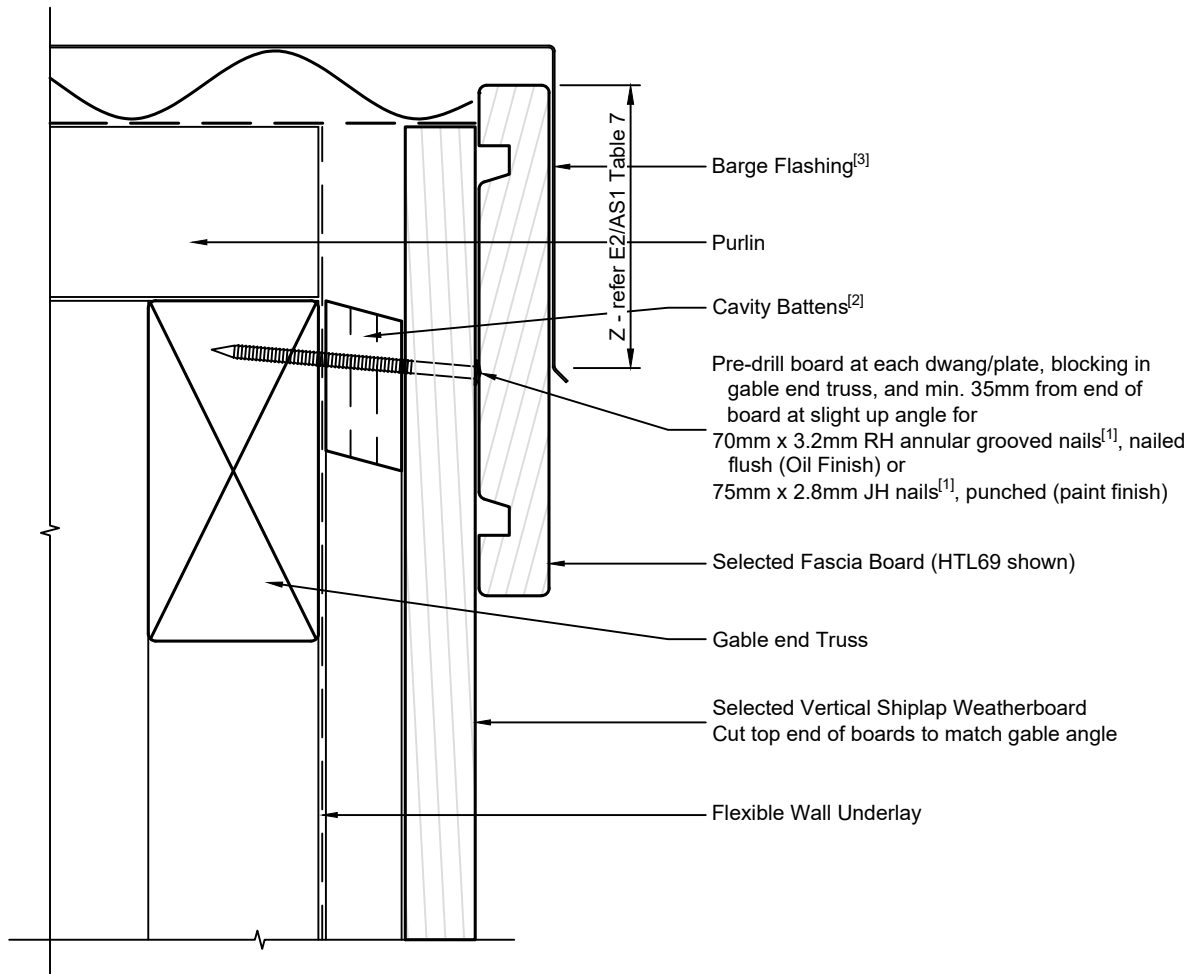
**Vertical Shiplap Weatherboards  
20mm Cavity Batten - Flexible Underlay  
Barge Soffit detail**

1:2 @ A4 2022/03/11

Drawing No.  
1-4-851

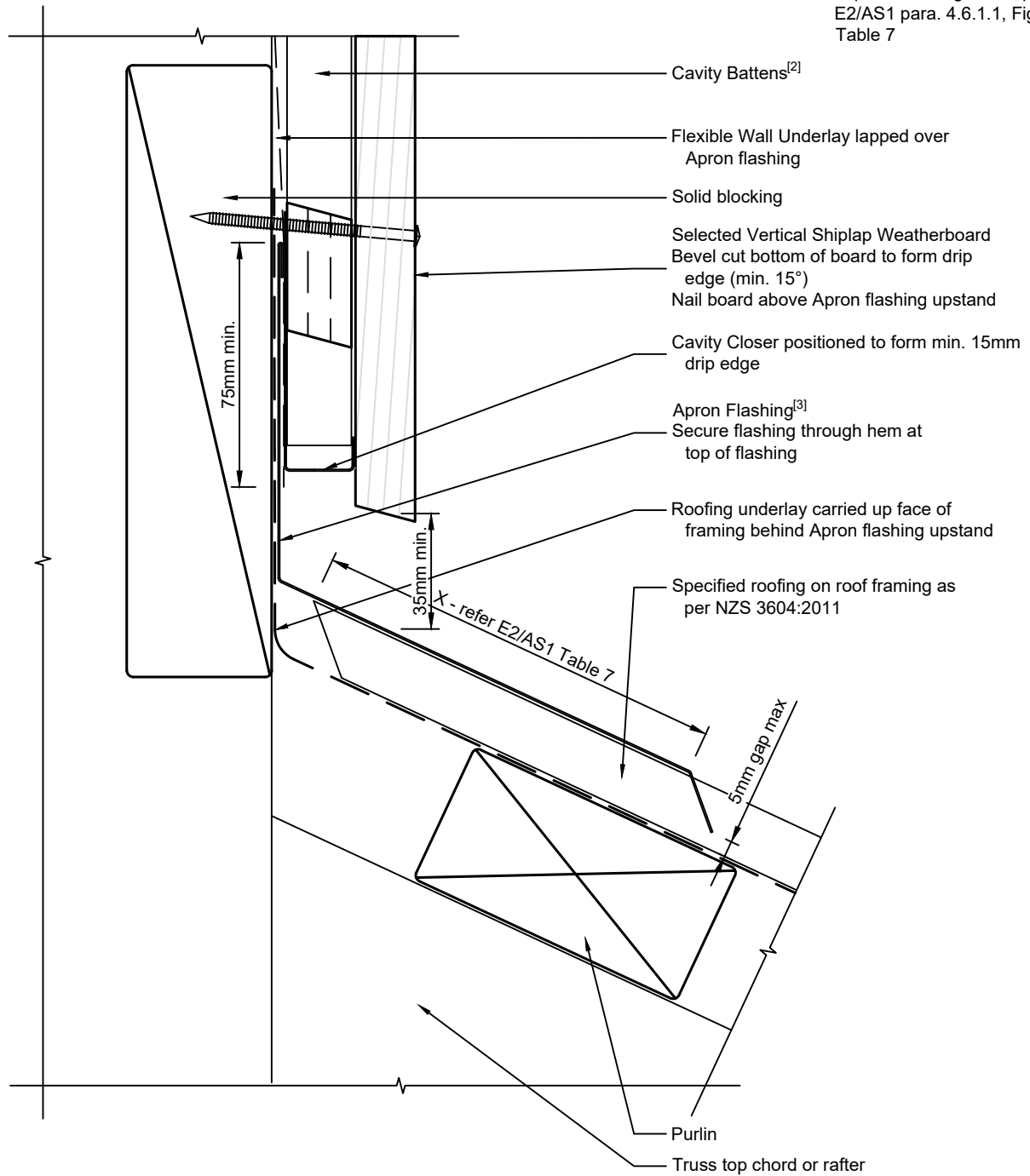
**Note:**

- 1/ Cladding Fixings are not currently covered by E2/AS1. Approx 20mm has been added to the E2/AS1 dimensions for Direct Fixed
- 2/ Cavity Battens are Horizontal Castellated timber battens (HTLBH20) and plain vertical battens (HTLBV20), temporarily fixed with cladding nails
- 3/ Barge Flashing to comply with E2/AS1 para. 8.4.12(f), Fig. 47 & Table 7



**Note:**

- 1/ Cladding Fixings are not currently covered by E2/AS1. Approx 20mm has been added to the E2/AS1 dimensions for Direct Fixed
- 2/ Cavity Battens are Horizontal Castellated timber battens (HTLBH20) and plain vertical battens (HTLBV20), temporarily fixed with cladding nails
- 3/ Apron Flashing to comply with E2/AS1 para. 4.6.1.1, Fig. 7 & Table 7



Ph: 03 544 6006  
 Email: sales@htlgroup.co.nz  
 Website: www.htlgroup.co.nz  
 48 Beach Road, Richmond, Nelson 7020  
 P O Box 3050, Richmond, Nelson 7050

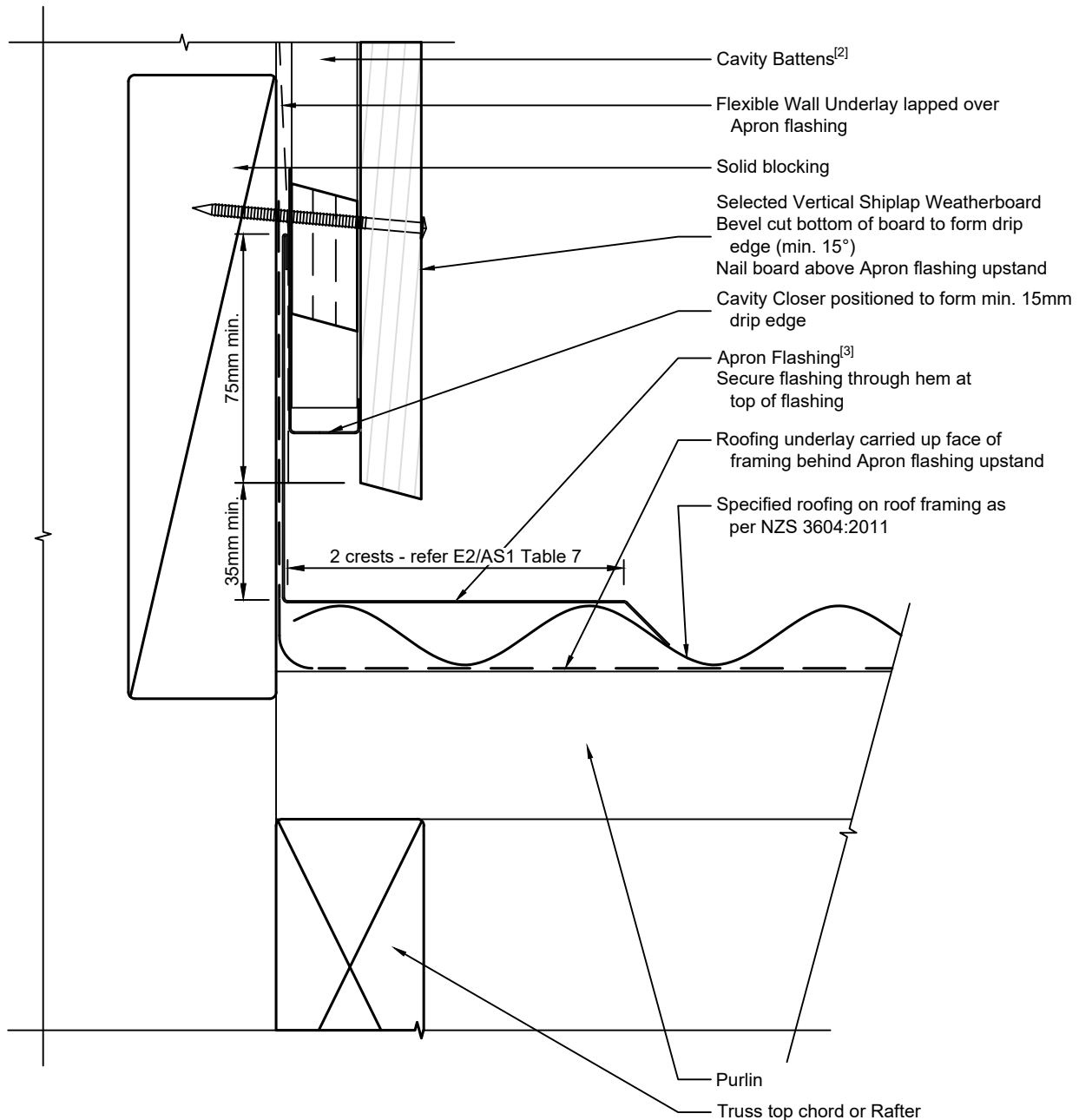
**Vertical Shiplap Weatherboards**  
**20mm Cavity Batten - Flexible Underlay**  
**Wall to Roof detail**  
**Top of roofing**

1:2 @ A4	2022/03/11
Drawing No. 1-4-901	



**Note:**

- 1/ Cladding Fixings are not currently covered by E2/AS1. Approx 20mm has been added to the E2/AS1 dimensions for Direct Fixed
- 2/ Cavity Battens are Horizontal Castellated timber battens (HTLBH20) and plain vertical battens (HTLBV20), temporarily fixed with cladding nails
- 3/ Apron Flashing to comply with E2/AS1 para. 4.6.1.1, Fig. 7 & Table 7



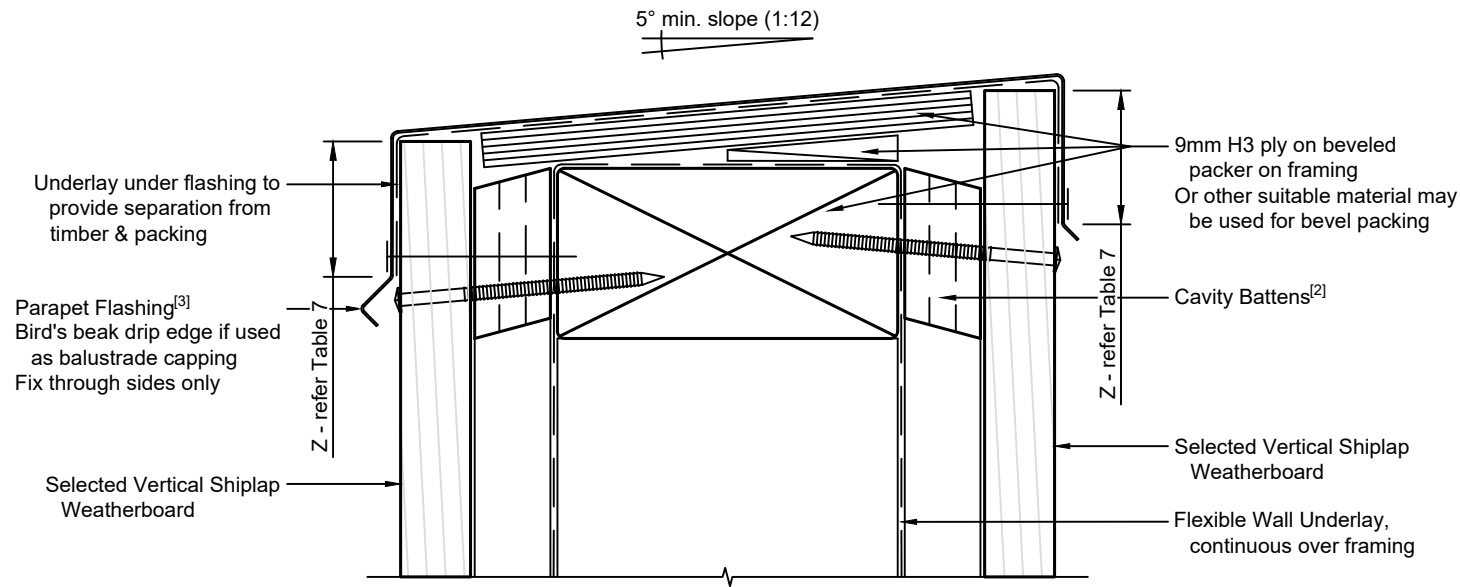
Ph: 03 544 6006  
 Email: sales@htlgroup.co.nz  
 Website: www.htlgroup.co.nz  
 48 Beach Road, Richmond, Nelson 7020  
 P O Box 3050, Richmond, Nelson 7050

**Vertical Shiplap Weatherboards**  
**20mm Cavity Batten - Flexible Underlay**  
**Wall to Roof detail**  
**Side of roofing**

1:2 @ A4 2022/03/11

Drawing No.  
1-4-902

- Note:**
- 1/ Cladding Fixings are not currently covered by E2/AS1. Approx 20mm has been added to the E2/AS1 dimensions for Direct Fixed
  - 2/ Cavity Battens are Horizontal Castellated timber battens (HTLBH20) and plain vertical battens (HTLBV20), temporarily fixed with cladding nails
  - 3/ Parapet flashings to comply with E2/AS1 para. 6.0, Fig. 10 & Table 7



Ph: 03 544 6006  
 Email: sales@htlgroup.co.nz  
 Website: www.htlgroup.co.nz  
 48 Beach Road, Richmond, Nelson 7020  
 P O Box 3050, Richmond, Nelson 7050

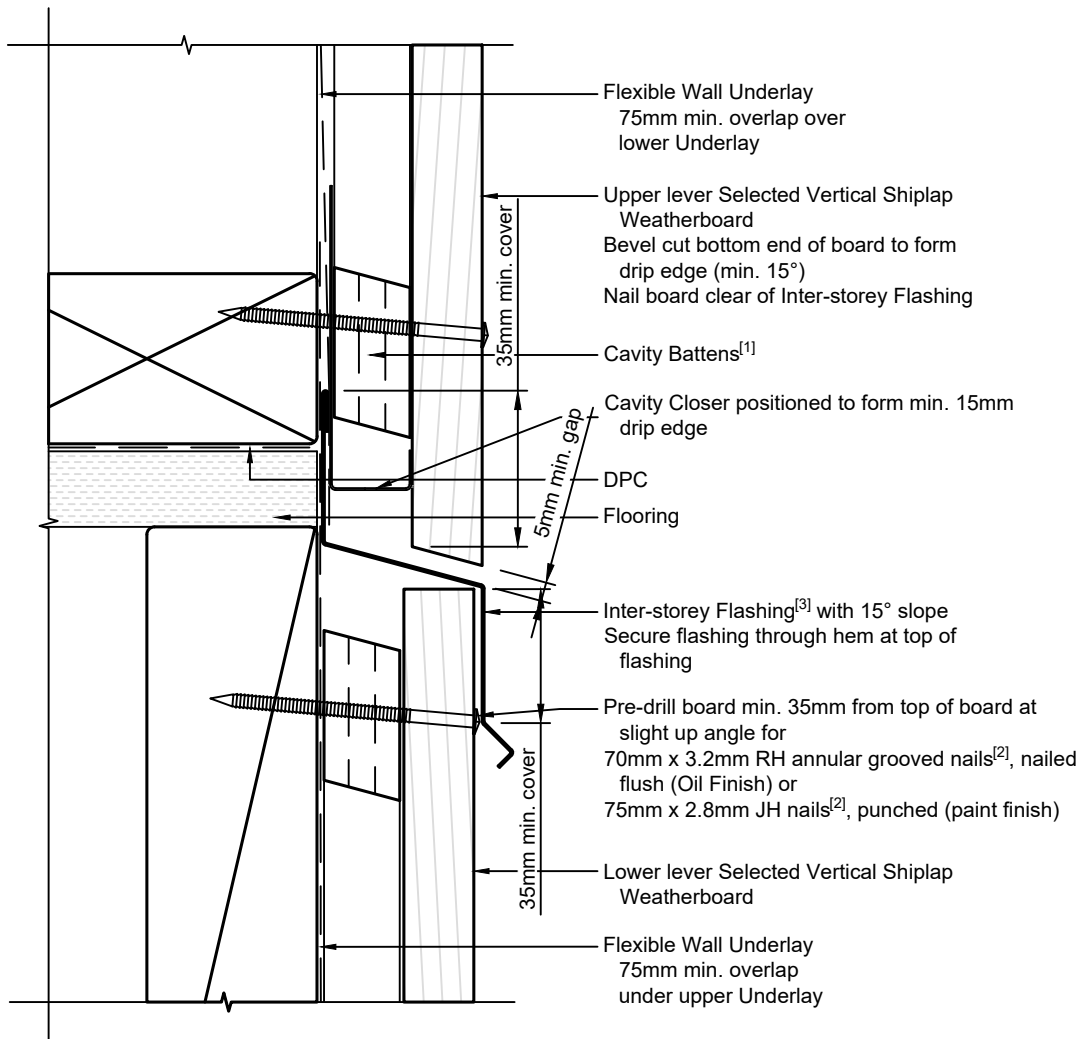
**Vertical Shiplap Weatherboards**  
**20mm Cavity Batten - Flexible Underlay**  
**Parapet detail**

1:2 @ A4    2022/03/11

Drawing No.  
1-4-911

**Note:**

- 1/ Cavity Battens are Horizontal Castellated timber battens (HTLBH20) and plain vertical battens (HTLBV20), temporarily fixed with cladding nails
- 2/ Cladding Fixings are not currently covered by E2/AS1. Approx 20mm has been added to the E2/AS1 dimensions for Direct Fixed
- 3/ Inter-storey Flashing to comply with E2/AS1 para. 9.1.9.4. & Fig. 70 or to suit common length of cladding, mitre at corners or form stop-ends as needed



**Note:** For use on walls over 2 storeys or 7 meters



Ph: 03 544 6006  
Email: sales@htlgroup.co.nz  
Website: www.htlgroup.co.nz  
48 Beach Road, Richmond, Nelson 7020  
P O Box 3050, Richmond, Nelson 7050

**Vertical Shiplap Weatherboards  
20mm Cavity Batten - Flexible Underlay  
Inter-storey Break detail**

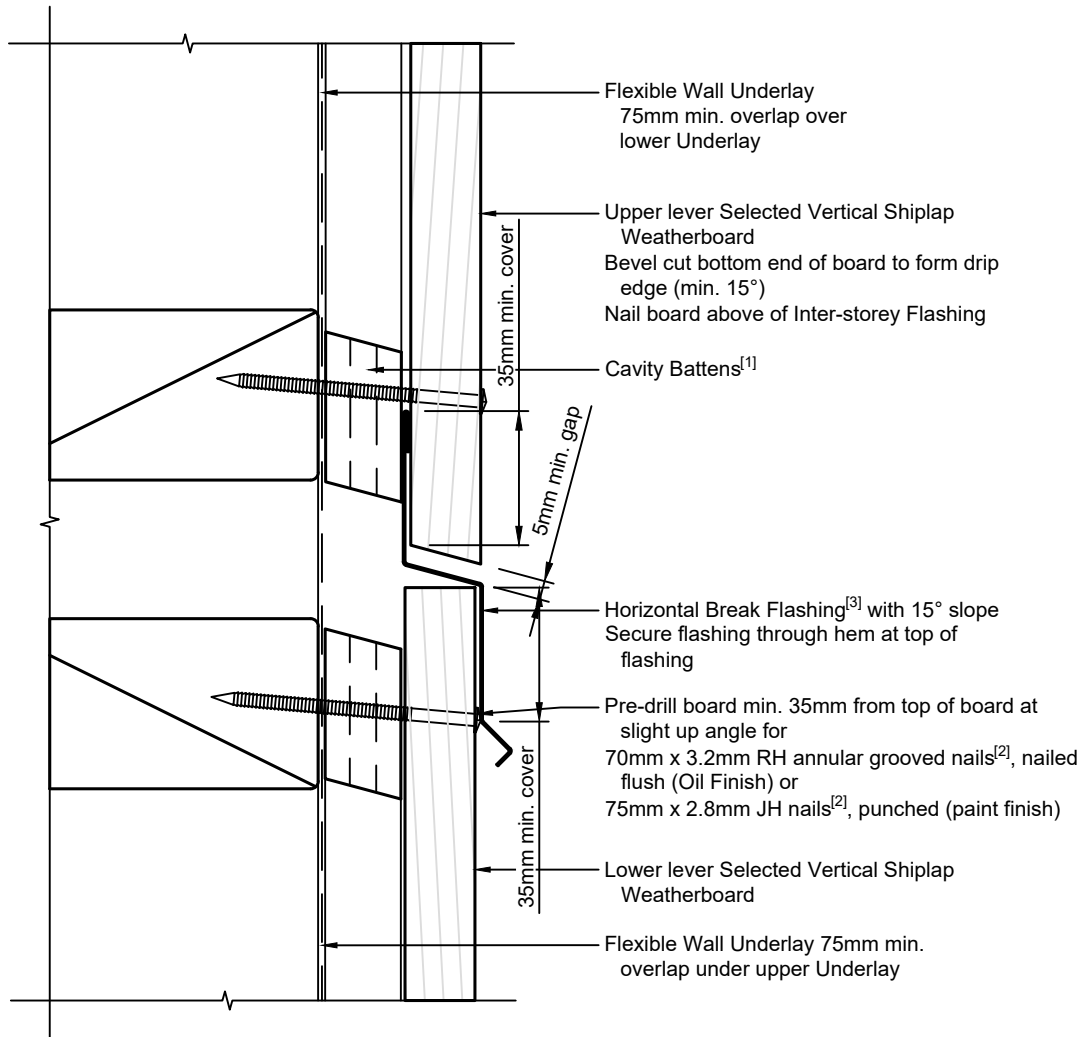
1:2 @ A4

2022/03/11

Drawing No.  
1-4-951

**Note:**

- 1/ Cavity Battens are Horizontal Castellated timber battens (HTLBH20) and plain vertical battens (HTLBV20), temporarily fixed with cladding nails
- 2/ Cladding Fixings are not currently covered by E2/AS1. Approx 20mm has been added to the E2/AS1 dimensions for Direct Fixed
- 3/ Horizontal break flashing to comply with E2/AS1 para. 9.1.9.4. & Fig. 70 or to suit common length of cladding, mitre at corners or form stop-ends as needed



**Note:** For use on walls less than 2 storeys or 7 meters where a horizontal break is required



Ph: 03 544 6006  
Email: sales@htlgroup.co.nz  
Website: www.htlgroup.co.nz  
48 Beach Road, Richmond, Nelson 7020  
P O Box 3050, Richmond, Nelson 7050

**Vertical Shiplap Weatherboards  
20mm Cavity Batten - Flexible Underlay  
Horizontal Break detail**

1:2 @ A4 2022/03/11

Drawing No.  
1-4-961