

## Index

### Details for - Board and Batten Direct Fix - Flexible Underlay

2-1-001	Index
2-1-101	Nail Fixing
2-1-111	Penetrations
2-1-151	Meter Box - Bottom
2-1-152	Meter Box - Side
2-1-153	Meter Box - Head
2-1-211	Bottom of Wall - Timber Floor
2-1-221	Bottom of Wall - Concrete Floor
2-1-301	External Boxed Corner
2-1-351	Internal Corner - Option A
2-1-352	Internal Corner - Option B
2-1-501	Door Sill
2-1-502	Door Jamb
2-1-503	Door Head
2-1-601	Window Sill
2-1-602	Window Jamb
2-1-603	Window Head
2-1-801	Eave Soffit
2-1-802	Flush Eave
2-1-851	Barge Soffit
2-1-852	Flush Barge
2-1-901	Roof to Wall - Top of roofing
2-1-902	Roof to Wall - Side of roofing
2-1-911	Parapet - [note]
2-1-951	Inter-storey Break - [note]
2-1-961	Horizontal Break - [note]

#### Notes;

Standards referred to in these Details;

- E2/AS1 External Moisture (Amendment 9 June 2019)
- NZS3604:2011 Timber-framed Buildings

All Details have been 'exploded' for clarity

Aluminium Joinery profiles used in these details are from "Nulook", change these profiles for the profiles of the Joinery company you are using



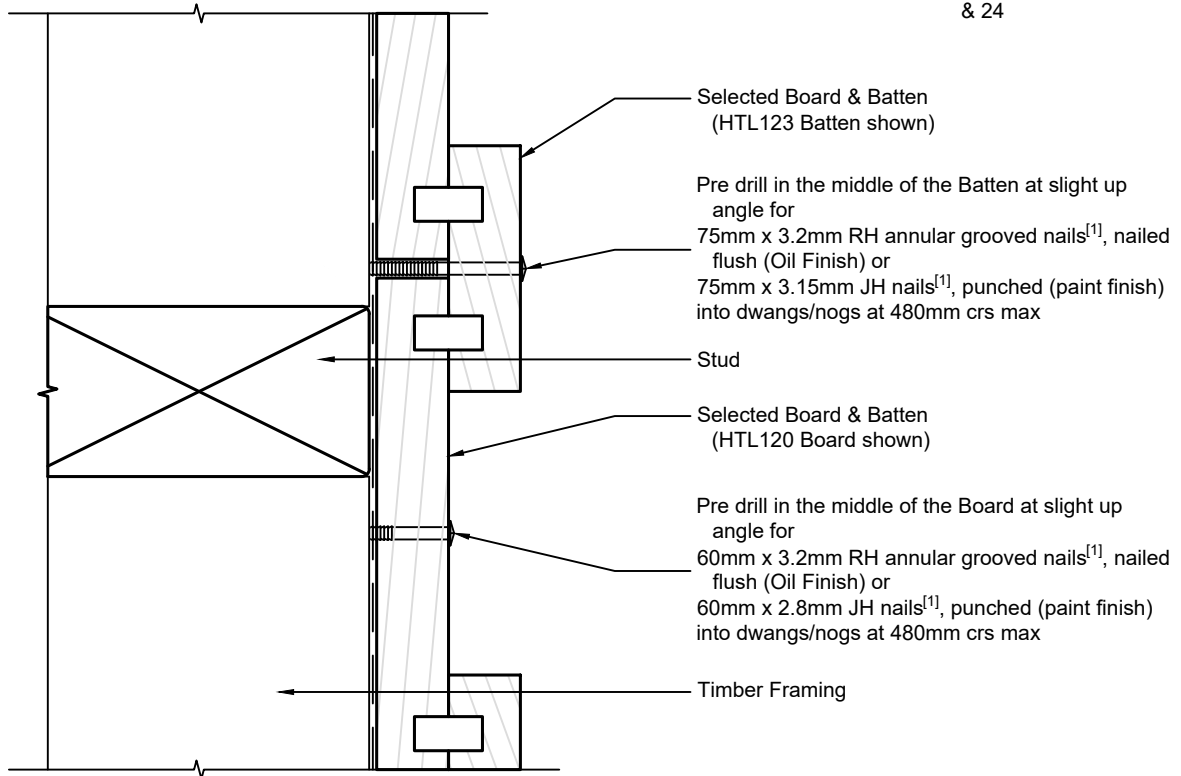
Ph: 03 544 6006  
Email: sales@htlgroup.co.nz  
Website: www.htlgroup.co.nz  
48 Beach Road, Richmond, Nelson 7020  
P O Box 3050, Richmond, Nelson 7050

**Board and Batten**  
**Direct Fix - Flexible Underlay**  
**Index**

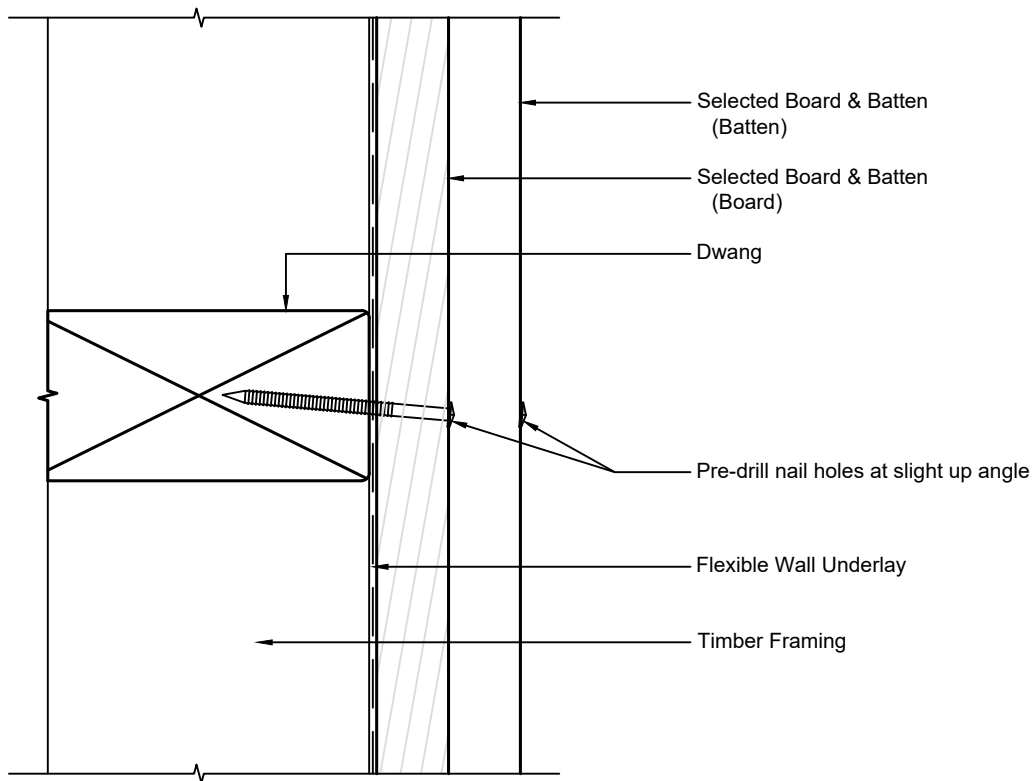
1:1 @ A4 | 2021/01/26

Drawing No.  
2-1-001

Note:  
 1/ Cladding Fixings to comply with  
 E2/AS1 para. 9.4.3.1 & Tables 20  
 & 24



Horizontal cross section



Vertical cross section



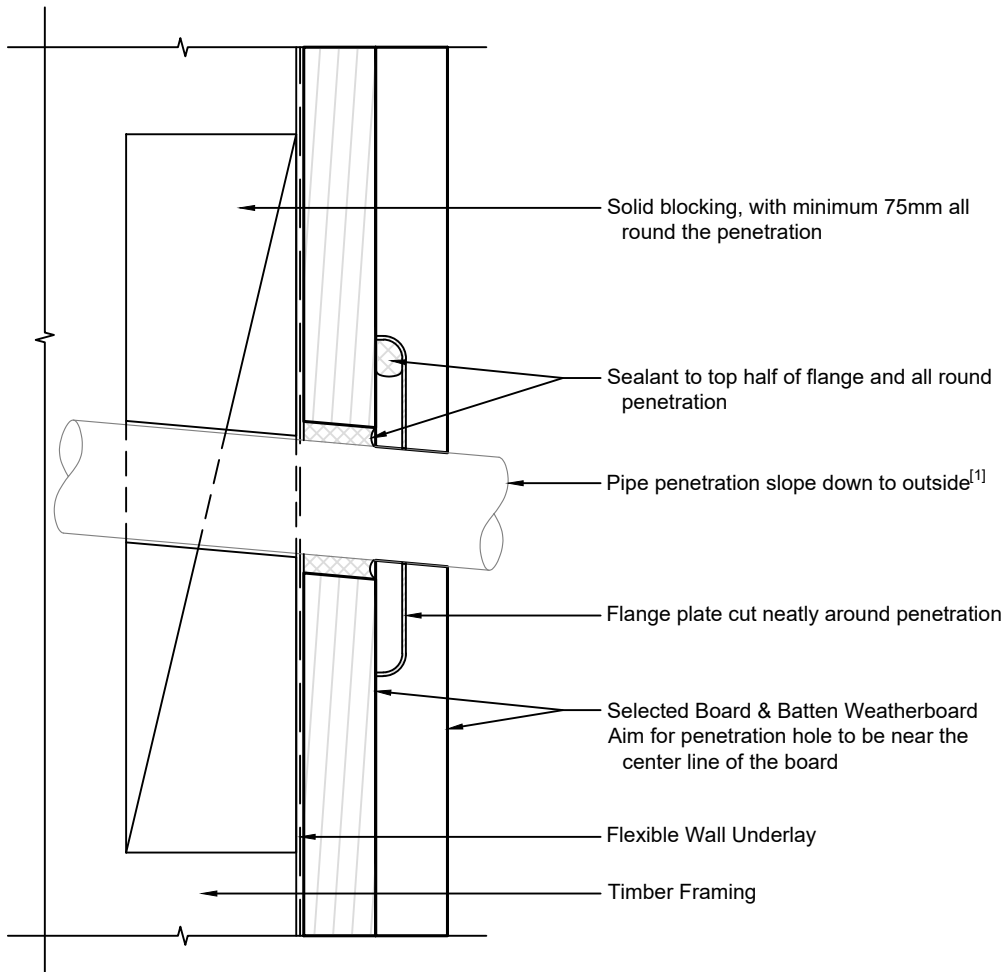
Ph: 03 544 6006  
 Email: sales@htlgroup.co.nz  
 Website: www.htlgroup.co.nz  
 48 Beach Road, Richmond, Nelson 7020  
 P O Box 3050, Richmond, Nelson 7050

**Board and Batten**  
**Direct Fix - Flexible Underlay**  
**Nail Fixing detail**

1:2 @ A4 2021/01/26

Drawing No.  
 2-1-101

Note:  
 1/ Penetration to comply with  
 E2/AS1 para. 9.1.9.3 & Fig. 68  
 2/ Cladding Fixings to comply with  
 E2/AS1 para. 9.4.3.1 & Tables 20  
 & 24



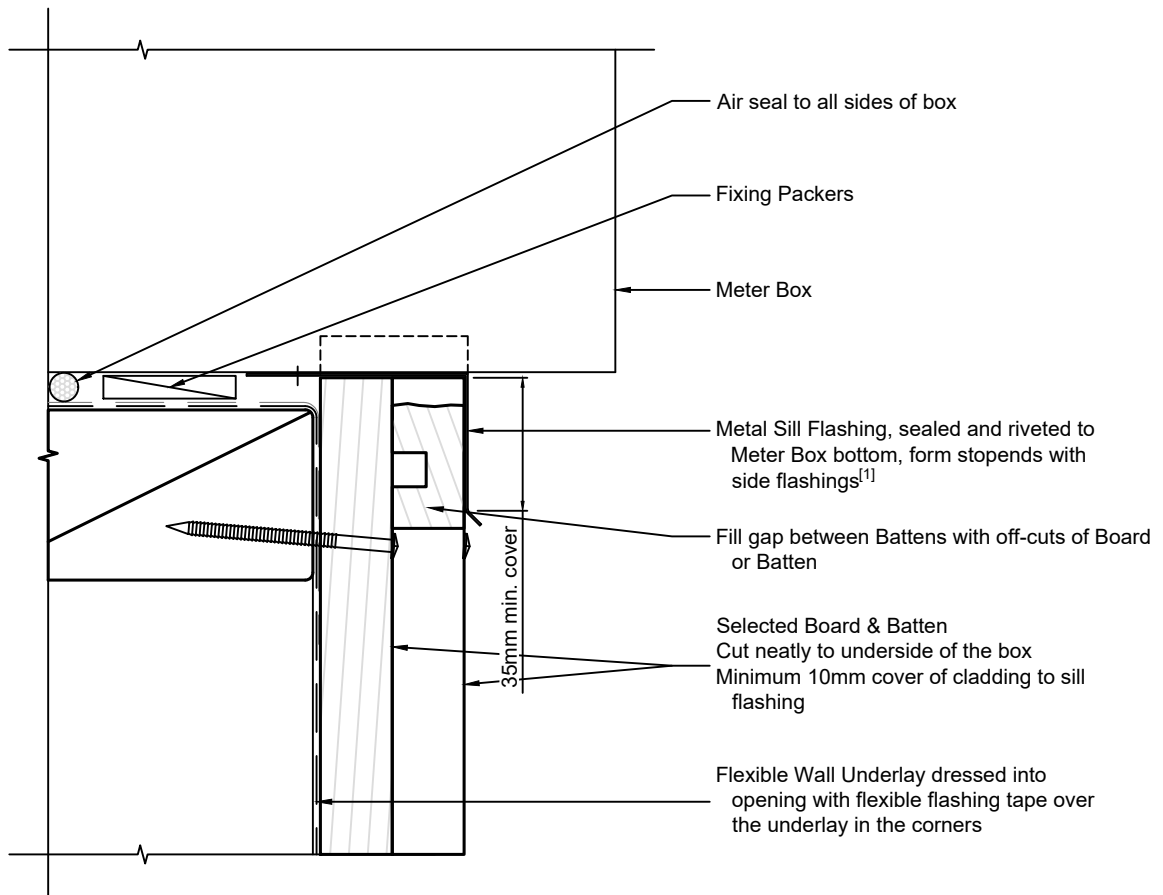
Ph: 03 544 6006  
 Email: sales@htlgroup.co.nz  
 Website: www.htlgroup.co.nz  
 48 Beach Road, Richmond, Nelson 7020  
 P O Box 3050, Richmond, Nelson 7050

**Board and Batten  
 Direct Fix - Flexible Underlay  
 Penetration detail**

1:2 @ A4 2021/01/26

Drawing No.  
 2-1-111

Note:  
 1/ To comply with E2/AS1 para. 9.1.9.3  
 2/ Cladding Fixings to comply with E2/AS1 para. 9.4.3.1 & Tables 20 & 24



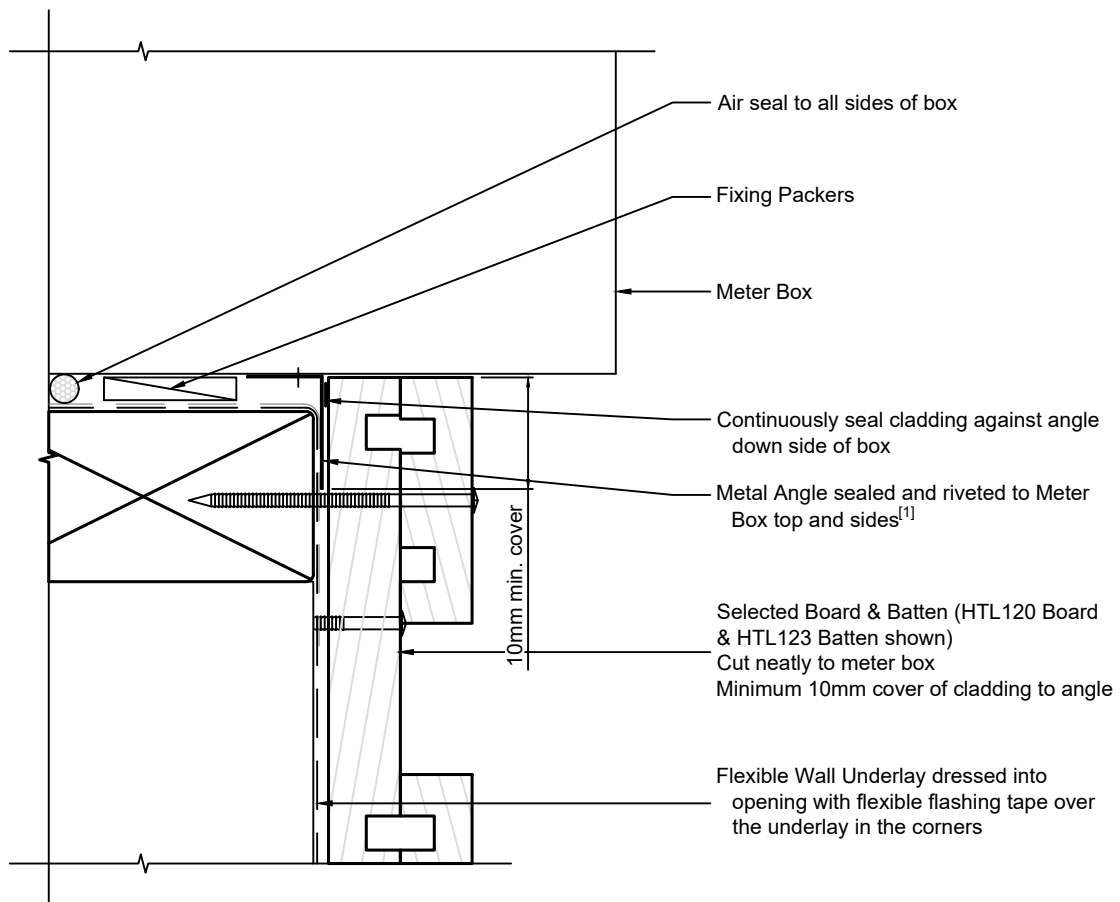
Ph: 03 544 6006  
 Email: sales@htlgroup.co.nz  
 Website: www.htlgroup.co.nz  
 48 Beach Road, Richmond, Nelson 7020  
 P O Box 3050, Richmond, Nelson 7050

**Board and Batten**  
**Direct Fix - Flexible Underlay**  
**Meter Box - Bottom detail**

1:2 @ A4 | 2021/01/26

Drawing No.  
 2-1-151

Note:  
 1/ To comply with E2/AS1 para. 9.1.9.3  
 2/ Cladding Fixings to comply with E2/AS1 para. 9.4.3.1 & Tables 20 & 24



Ph: 03 544 6006  
 Email: sales@htlgroup.co.nz  
 Website: www.htlgroup.co.nz  
 48 Beach Road, Richmond, Nelson 7020  
 P O Box 3050, Richmond, Nelson 7050

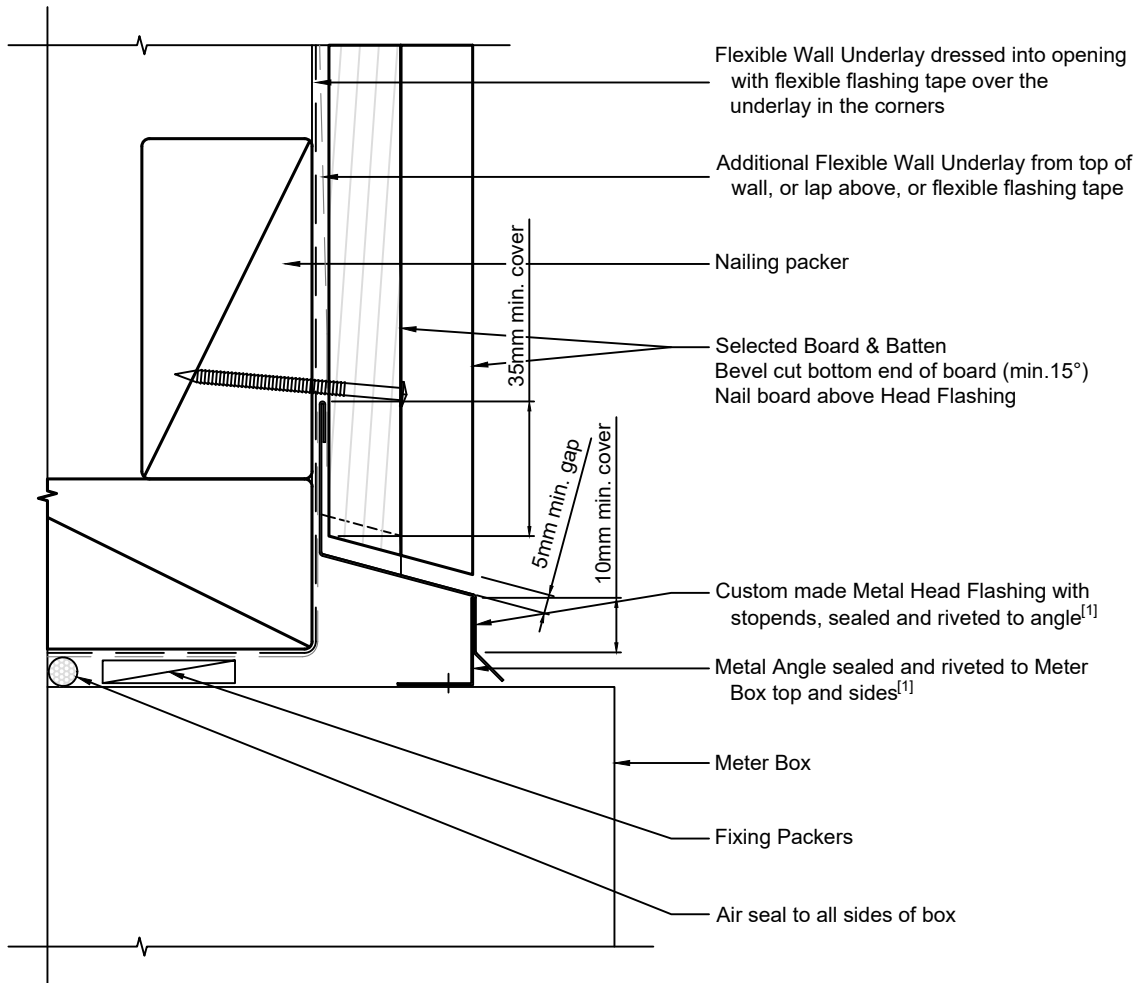
**Board and Batten**  
**Direct Fix - Flexible Underlay**  
**Meter Box - Side detail**

1:2 @ A4 | 2021/01/26

Drawing No.  
 2-1-152

**Note:**

- 1/ To comply with E2/AS1 para. 9.1.9.3 & Fig. 69
- 2/ Cladding Fixings to comply with E2/AS1 para. 9.4.3.1 & Tables 20 & 24



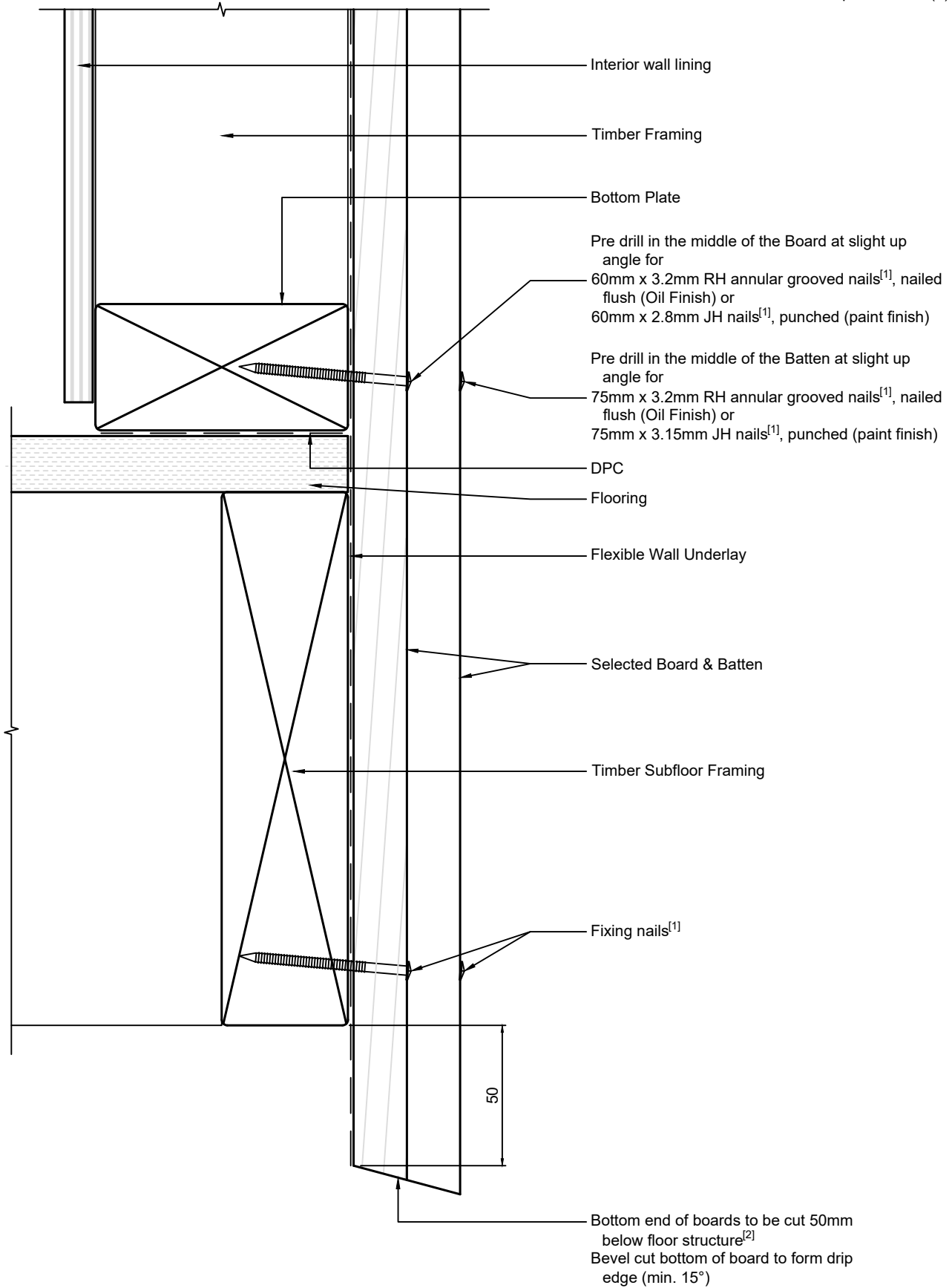
Ph: 03 544 6006  
 Email: sales@htlgroup.co.nz  
 Website: www.htlgroup.co.nz  
 48 Beach Road, Richmond, Nelson 7020  
 P O Box 3050, Richmond, Nelson 7050

**Board and Batten**  
**Direct Fix - Flexible Underlay**  
**Meter Box - Head detail**

1:2 @ A4 | 2021/01/26

Drawing No.  
 2-1-153

Note:  
 1/ Cladding Fixings to comply with E2/AS1 para. 9.4.3.1 & Tables 20 & 24  
 2/ See E2/AS1 para. 9.1.3.5(a)



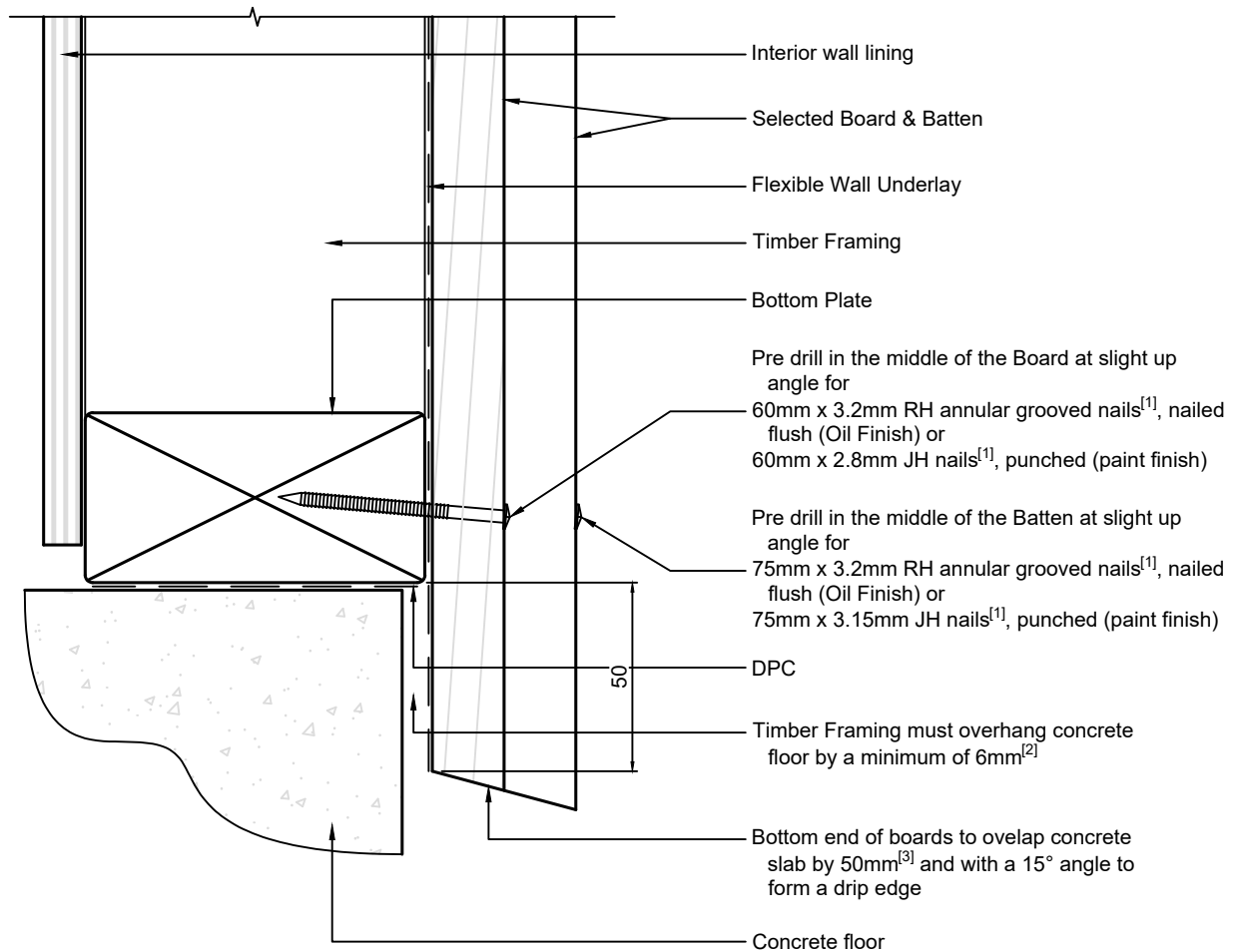
Ph: 03 544 6006  
 Email: sales@htlgroup.co.nz  
 Website: www.htlgroup.co.nz  
 48 Beach Road, Richmond, Nelson 7020  
 P O Box 3050, Richmond, Nelson 7050

**Board and Batten**  
**Direct Fix - Flexible Underlay**  
**Bottom of Wall detail**  
**Timber Floor**

1:2 @ A4 2021/01/26

Drawing No.  
 2-1-211

Note:  
 1/ Cladding Fixings to comply with E2/AS1 para. 9.4.3.1 & Tables 20 & 24  
 2/ See E2/AS1 para. 9.1.3.3(c)  
 3/ See E2/AS1 para. 9.1.3.3(b)



Ph: 03 544 6006  
 Email: sales@htlgroup.co.nz  
 Website: www.htlgroup.co.nz  
 48 Beach Road, Richmond, Nelson 7020  
 P O Box 3050, Richmond, Nelson 7050

**Board and Batten**  
**Direct Fix - Flexible Underlay**  
**Bottom of Wall detail**  
**Concrete Floor**

1:2 @ A4 2021/01/26

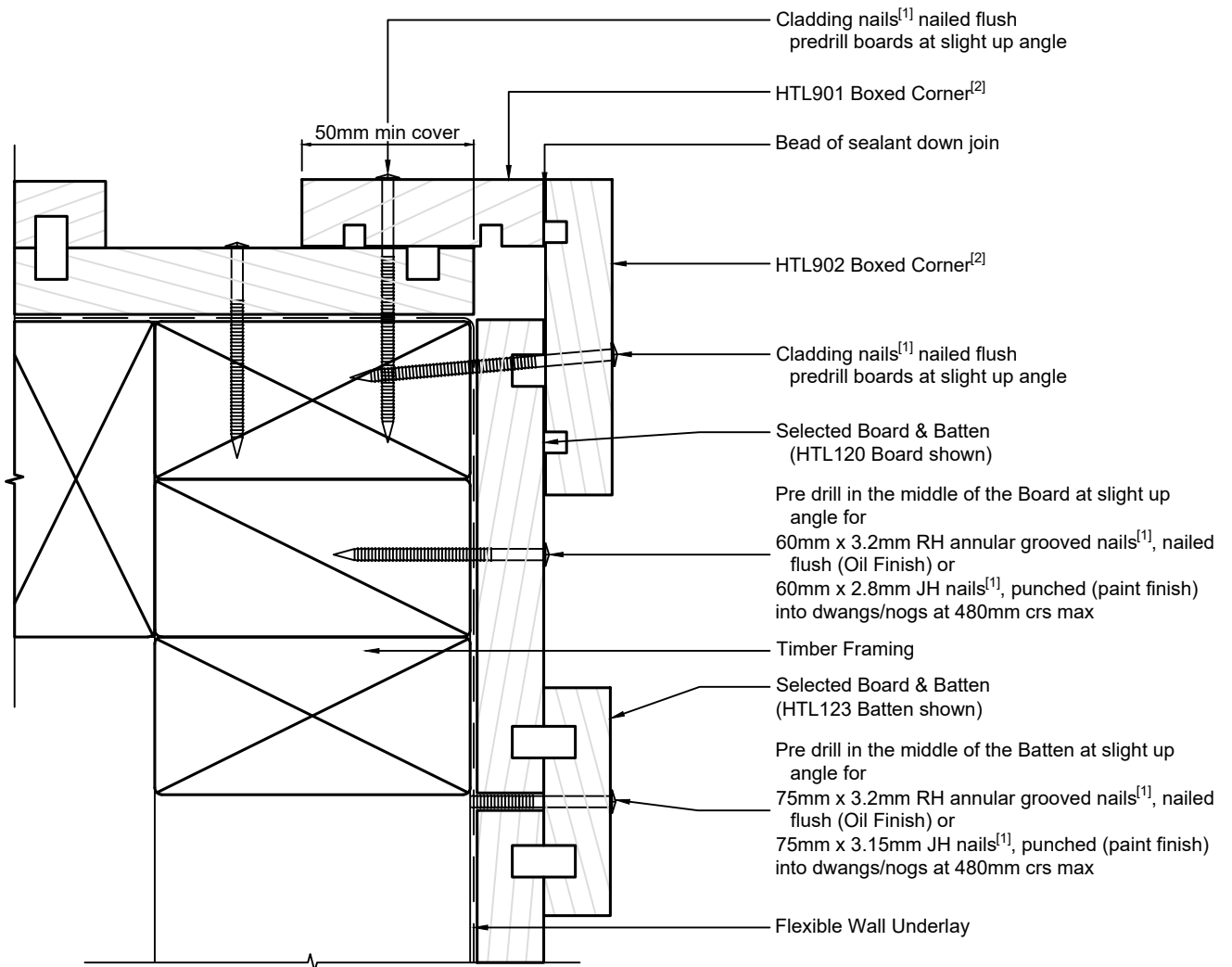
Drawing No.  
 2-1-221



**Note:**

1/ Cladding Fixings to comply with E2/AS1 para. 9.4.3.1 & Tables 20 & 24

2/ The minimum cover of Boxed Corner boards to comply with E2/AS1 para. 9.4.5.3(a) & fig. 80



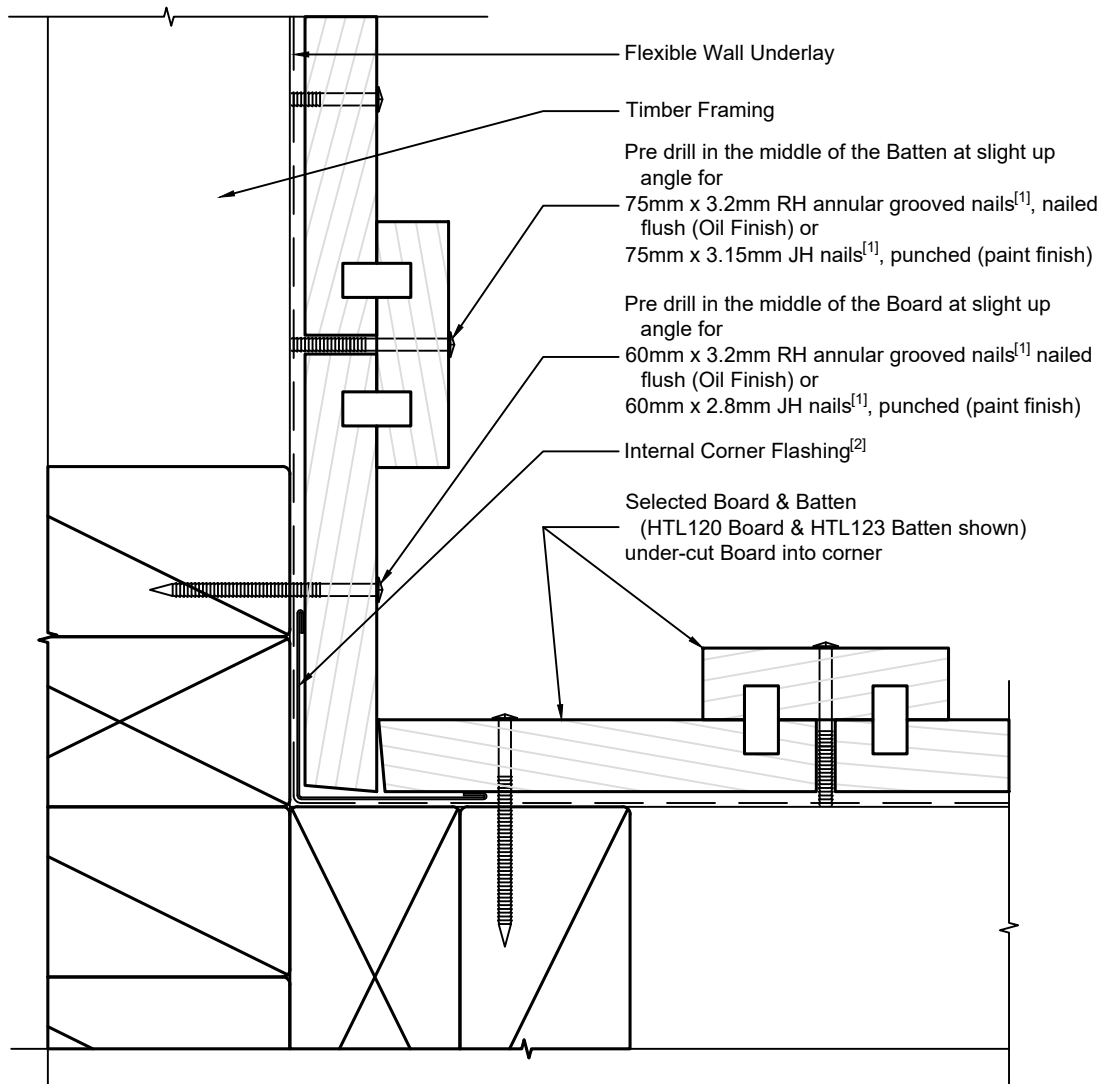
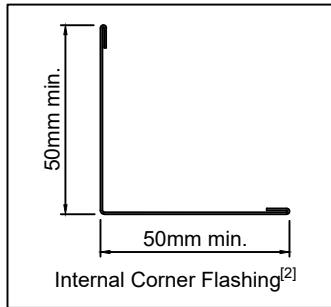
Ph: 03 544 6006  
 Email: sales@htlgroup.co.nz  
 Website: www.htlgroup.co.nz  
 48 Beach Road, Richmond, Nelson 7020  
 P O Box 3050, Richmond, Nelson 7050

**Board and Batten**  
**Direct Fix - Flexible Underlay**  
**External Boxed Corner detail**

1:2 @ A4 2021/01/26

Drawing No.  
 2-1-301

Note:  
 1/ Cladding Fixings to comply with E2/AS1 para. 9.4.3.1 & Tables 20 & 24  
 2/ Corner Flashing dimensions to comply with E2/AS1 para. 9.4.5.3(b) & Fig. 79(a) & Table 7



Option A



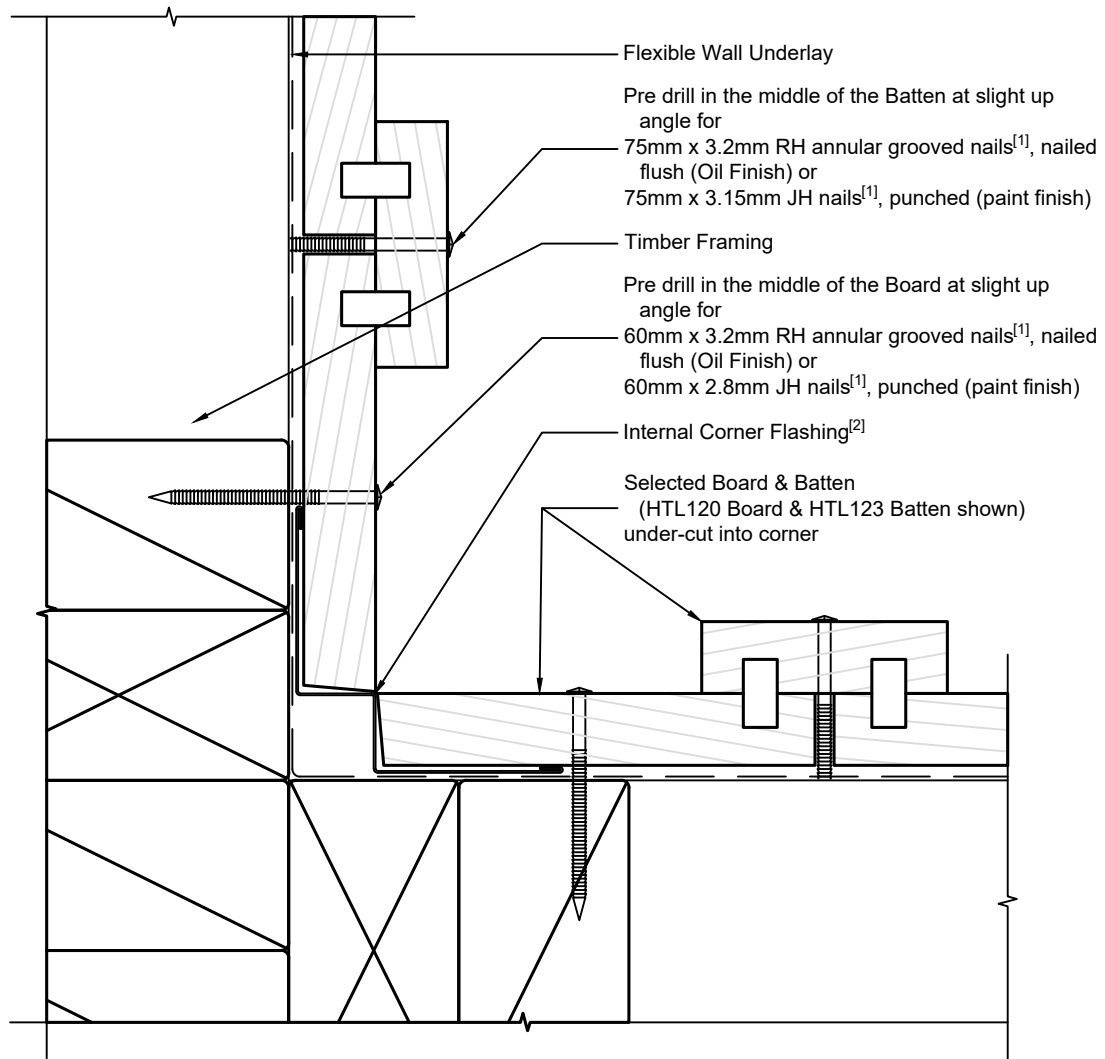
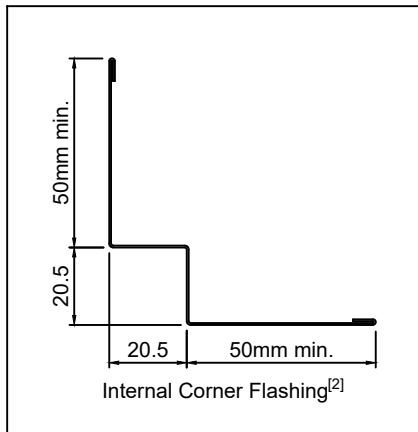
Ph: 03 544 6006  
 Email: sales@htlgroup.co.nz  
 Website: www.htlgroup.co.nz  
 48 Beach Road, Richmond, Nelson 7020  
 P O Box 3050, Richmond, Nelson 7050

**Board and Batten**  
**Direct Fix - Flexible Underlay**  
**Internal Corner detail**  
**Option A**

1:2 @ A4 2021/01/26

Drawing No.  
 2-1-351

Note:  
 1/ Cladding Fixings to comply with E2/AS1 para. 9.4.3.1 & Tables 20 & 24  
 2/ Corner Flashing dimensions to comply with E2/AS1 para. 9.4.5.3(b) & Table 7 & Fig. 79(b)



Option B



Ph: 03 544 6006  
 Email: sales@htlgroup.co.nz  
 Website: www.htlgroup.co.nz  
 48 Beach Road, Richmond, Nelson 7020  
 P O Box 3050, Richmond, Nelson 7050

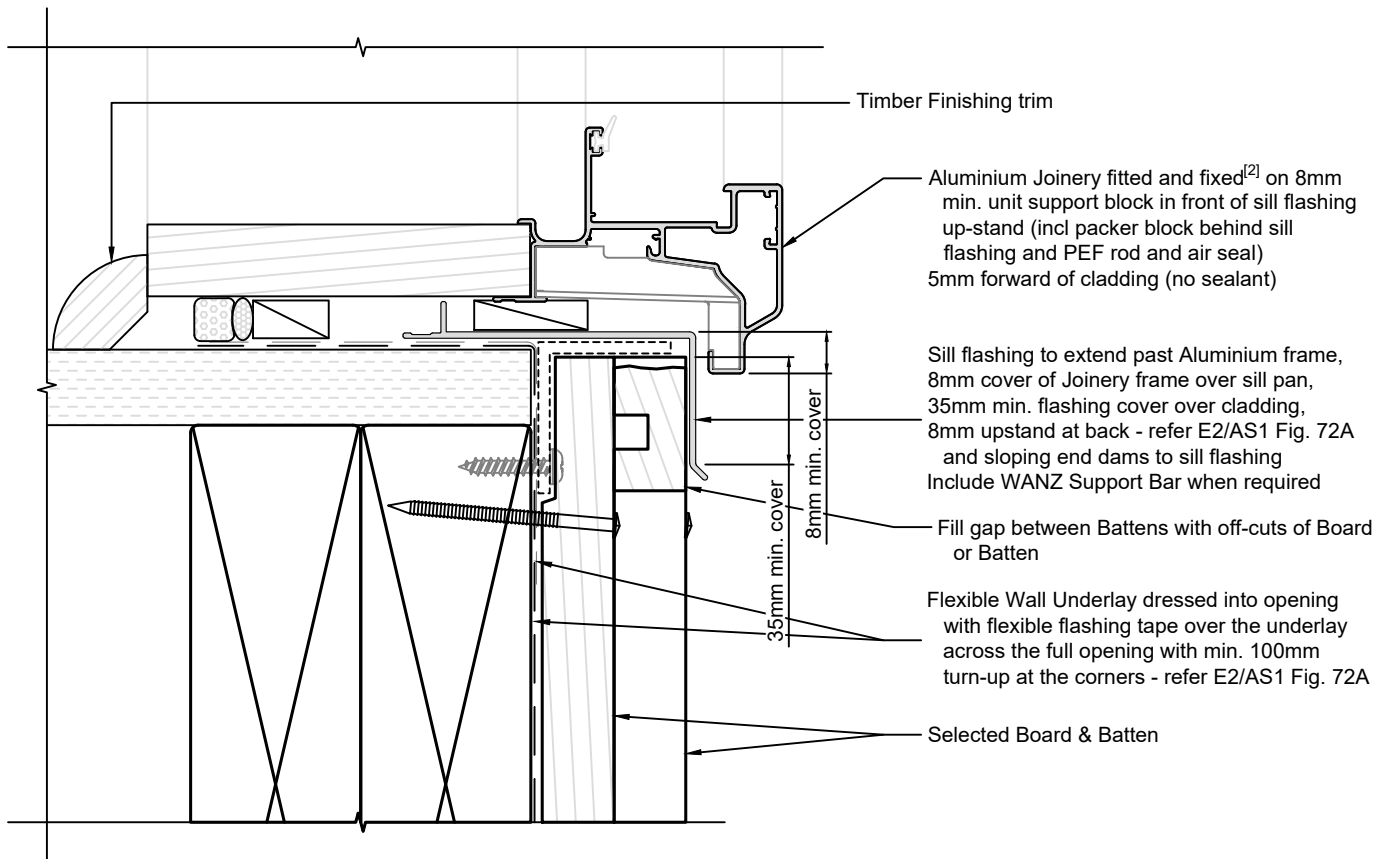
**Board and Batten**  
**Direct Fix - Flexible Underlay**  
**Internal Corner detail**  
**Option B**

1:2 @ A4 2021/01/26

Drawing No.  
 2-1-352

**Note:**

- 1/ To comply similar to E2/AS1, Fig. 84
- 2/ Joinery Fixing to comply with E2/AS1 para. 9.1.10.8 - pairs of 75mm x 3.15mm galv. JH nails or 8g x 65mm s/s screws, through reveals into framing at max 150mm from corners and at 450mm centres along sill
- 3/ Cladding Fixings to comply with E2/AS1 para. 9.4.3.1 & Tables 20 & 24



Ph: 03 544 6006  
 Email: sales@htlgroup.co.nz  
 Website: www.htlgroup.co.nz  
 48 Beach Road, Richmond, Nelson 7020  
 P O Box 3050, Richmond, Nelson 7050

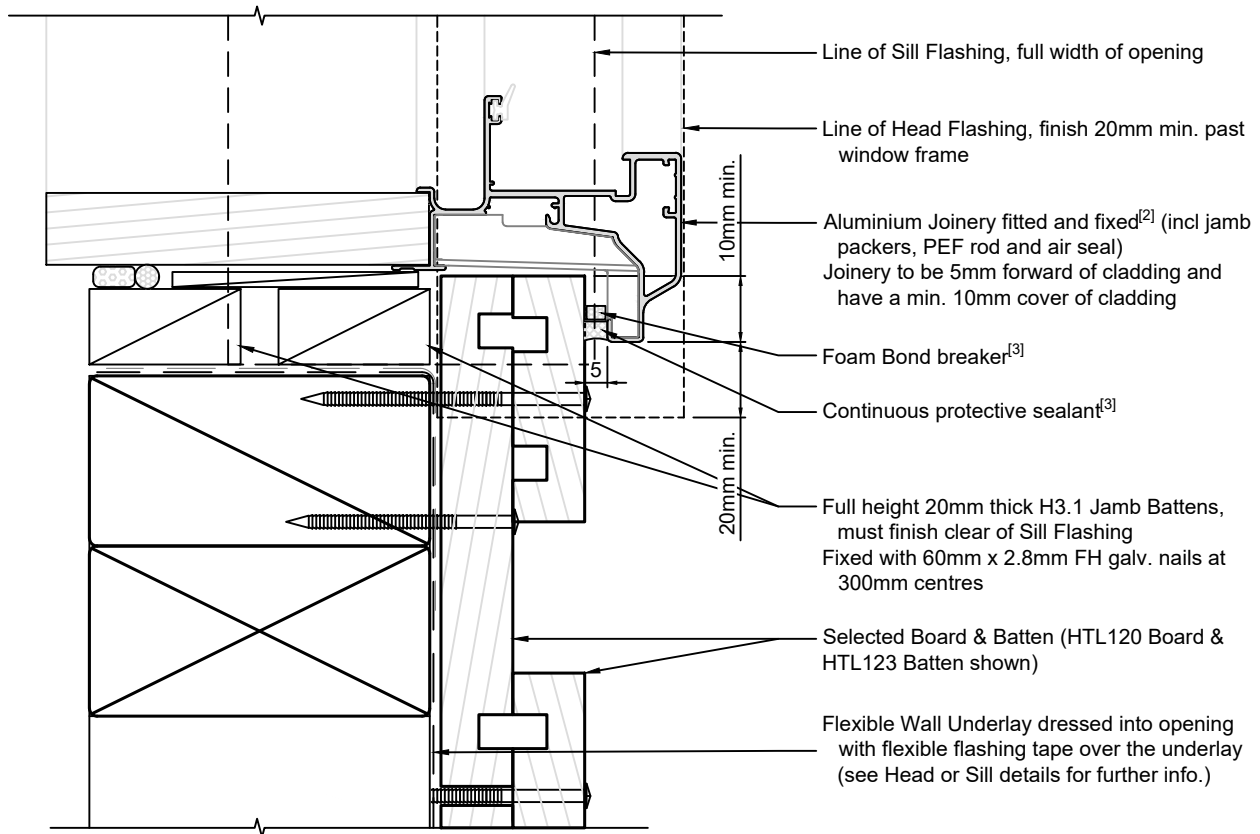
**Board and Batten  
 Direct Fix - Flexible Underlay  
 Door Sill detail**

1:2 @ A4 2021/01/26

Drawing No.  
 2-1-501

**Note:**

- 1/ To comply similar to E2/AS1, Fig. 84
- 2/ Joinery Fixing to comply with E2/AS1 para. 9.1.10.8 - pairs of 75mm x 3.15mm galv. JH nails or 8g x 65mm s/s screws, through reveals into framing at max 150mm from corners and at 450mm centres along jamb
- 3/ Refer E2/AS1 Fig. 83. Alternatively EITHER 1) If recess in boards occurs at window, fit closure piece OR 2) Depending on board layout, scribes or facing boards may be appropriate
- 4/ Cladding Fixings to comply with E2/AS1 para. 9.4.3.1 & Tables 20 & 24



Ph: 03 544 6006  
Email: sales@htlgroup.co.nz  
Website: www.htlgroup.co.nz  
48 Beach Road, Richmond, Nelson 7020  
P O Box 3050, Richmond, Nelson 7050

**Board and Batten  
Direct Fix - Flexible Underlay  
Door Jamb detail**

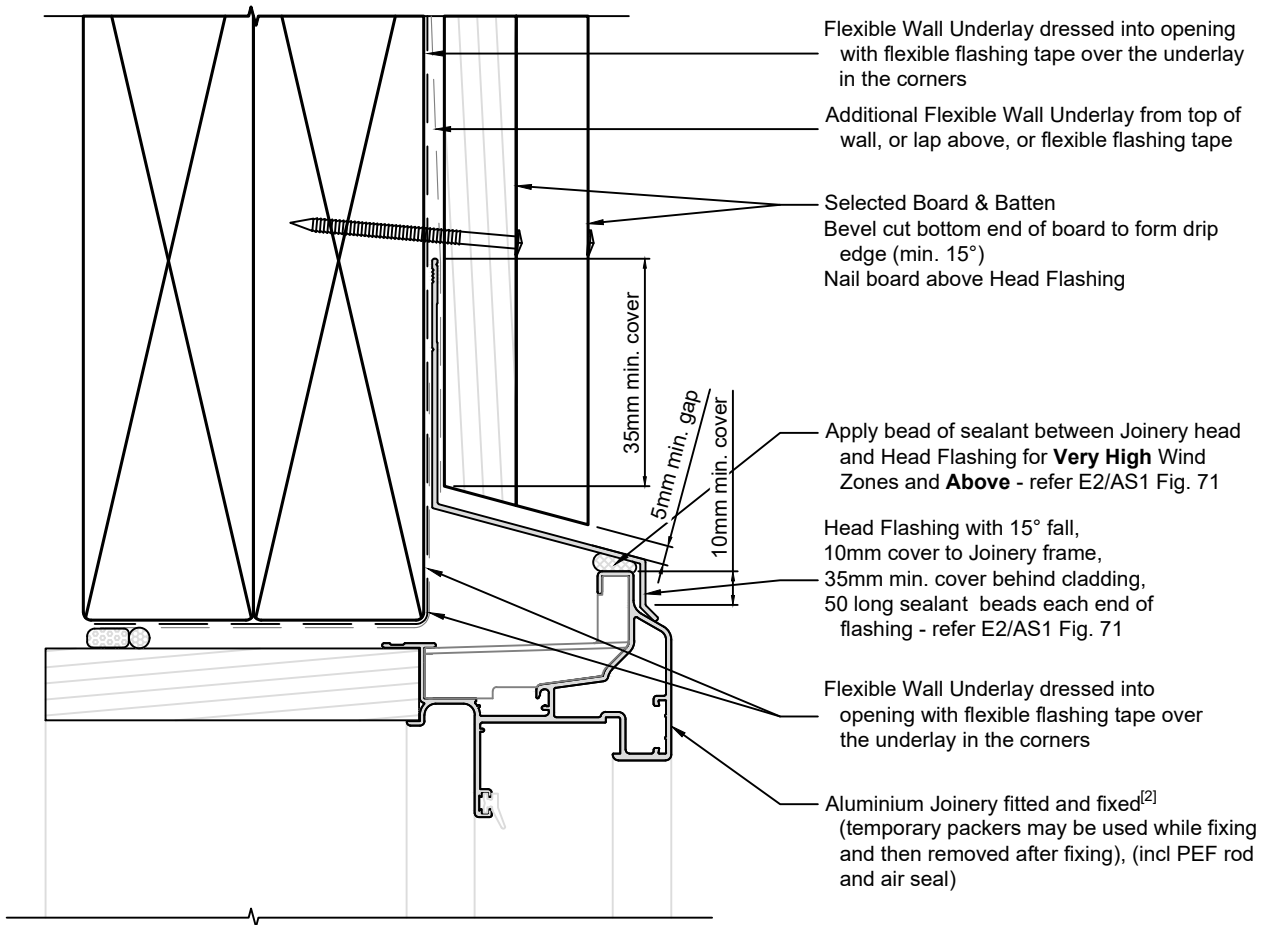
1:2 @ A4

2021/01/26

Drawing No.  
2-1-502

**Note:**

- 1/ To comply similar to E2/AS1, Fig. 84
- 2/ Joinery Fixing to comply with E2/AS1 para. 9.1.10.8 - pairs of 75mm x 3.15mm galv. JH nails or 8g x 65mm s/s screws, through reveals into framing at max 150mm from corners and at 450mm centres along jamb
- 3/ Cladding Fixings to comply with E2/AS1 para. 9.4.3.1 & Tables 20 & 24



Ph: 03 544 6006  
 Email: sales@htlgroup.co.nz  
 Website: www.htlgroup.co.nz  
 48 Beach Road, Richmond, Nelson 7020  
 P O Box 3050, Richmond, Nelson 7050

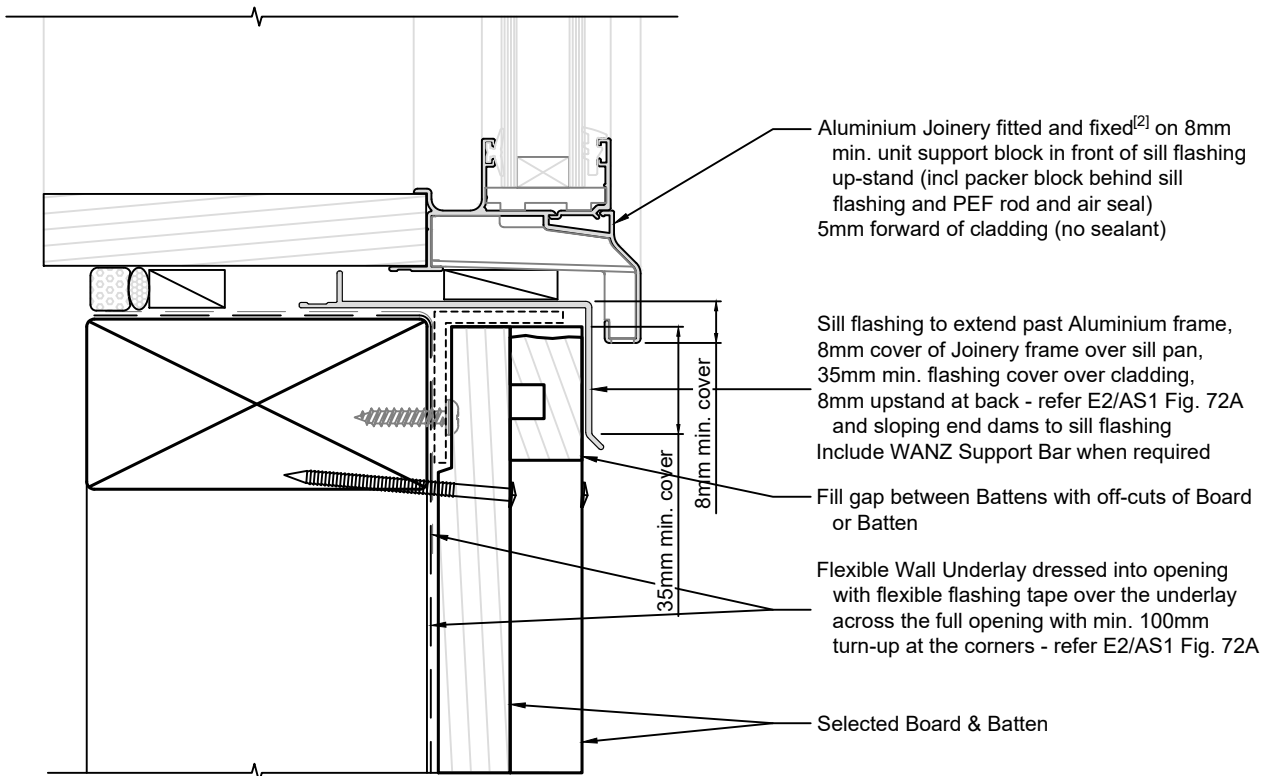
**Board and Batten  
 Direct Fix - Flexible Underlay  
 Door Head detail**

1:2 @ A4 2021/01/26

Drawing No.  
 2-1-503

**Note:**

- 1/ To comply similar to E2/AS1, Fig. 84
- 2/ Joinery Fixing to comply with E2/AS1 para. 9.1.10.8 - pairs of 75mm x 3.15mm galv. JH nails or 8g x 65mm s/s screws, through reveals into framing at max 150mm from corners and at 450mm centres along sill
- 3/ Cladding Fixings to comply with E2/AS1 para. 9.4.3.1 & Tables 20 & 24



Aluminium Joinery fitted and fixed<sup>[2]</sup> on 8mm min. unit support block in front of sill flashing up-stand (incl packer block behind sill flashing and PEF rod and air seal) 5mm forward of cladding (no sealant)

Sill flashing to extend past Aluminium frame, 8mm cover of Joinery frame over sill pan, 35mm min. flashing cover over cladding, 8mm upstand at back - refer E2/AS1 Fig. 72A and sloping end dams to sill flashing Include WANZ Support Bar when required

Fill gap between Battens with off-cuts of Board or Batten

Flexible Wall Underlay dressed into opening with flexible flashing tape over the underlay across the full opening with min. 100mm turn-up at the corners - refer E2/AS1 Fig. 72A

Selected Board & Batten



Ph: 03 544 6006  
 Email: sales@htlgroup.co.nz  
 Website: www.htlgroup.co.nz  
 48 Beach Road, Richmond, Nelson 7020  
 P O Box 3050, Richmond, Nelson 7050

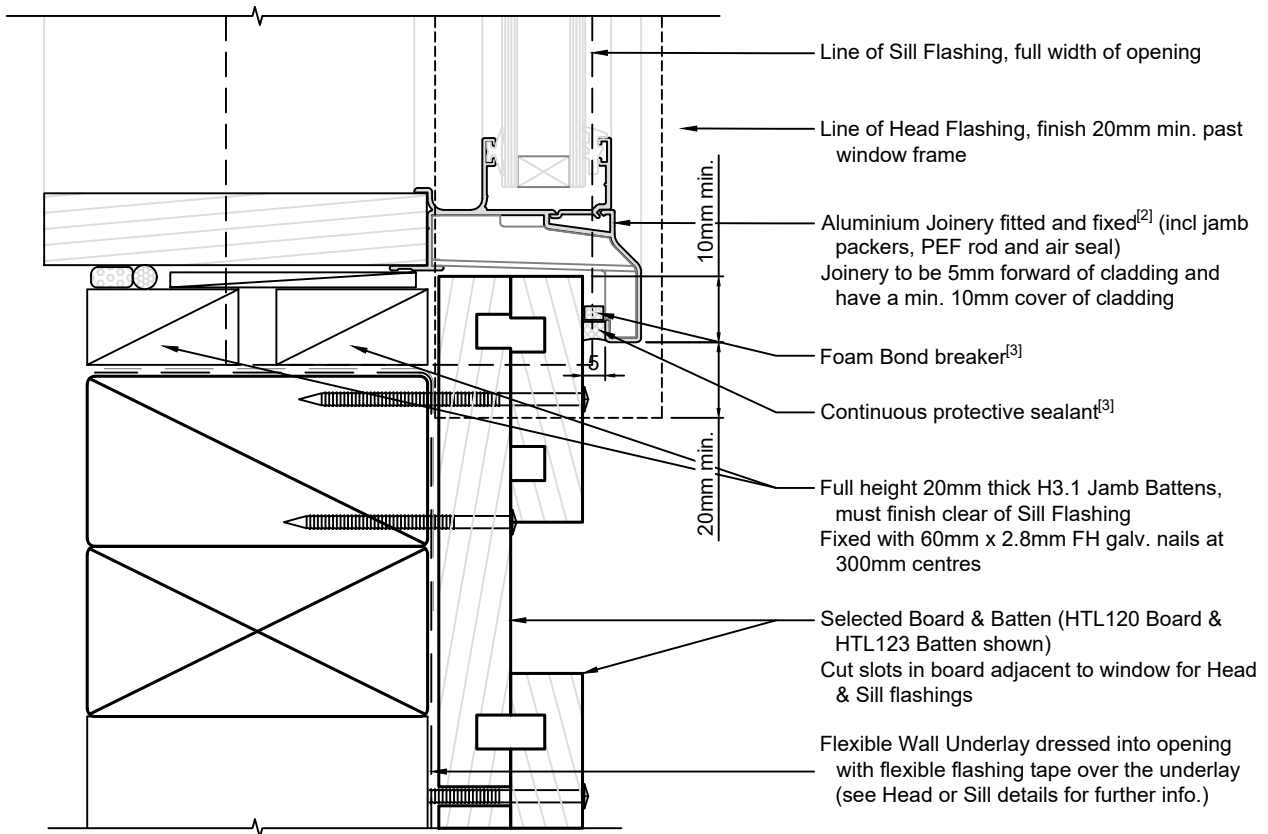
**Board and Batten**  
**Direct Fix - Flexible Underlay**  
**Window Sill detail**

1:2 @ A4 2021/01/26

Drawing No.  
 2-1-601

**Note:**

- 1/ Refer E2/AS1 Fig. 83
- 2/ Joinery Fixing to comply with E2/AS1 para. 9.1.10.8 - pairs of 75mm x 3.15mm galv. JH nails or 8g x 65mm s/s screws, through reveals into framing at max 150mm from corners and at 450mm centres along jamb
- 3/ Alternatively EITHER 1) If recess in boards occurs at window, fit closure piece OR 2) Depending on board layout, scribes or facing boards may be appropriate
- 4/ Cladding Fixings to comply with E2/AS1 para. 9.4.3.1 & Tables 20 & 24



Ph: 03 544 6006  
 Email: sales@htlgroup.co.nz  
 Website: www.htlgroup.co.nz  
 48 Beach Road, Richmond, Nelson 7020  
 P O Box 3050, Richmond, Nelson 7050

**Board and Batten  
 Direct Fix - Flexible Underlay  
 Window Jamb detail**

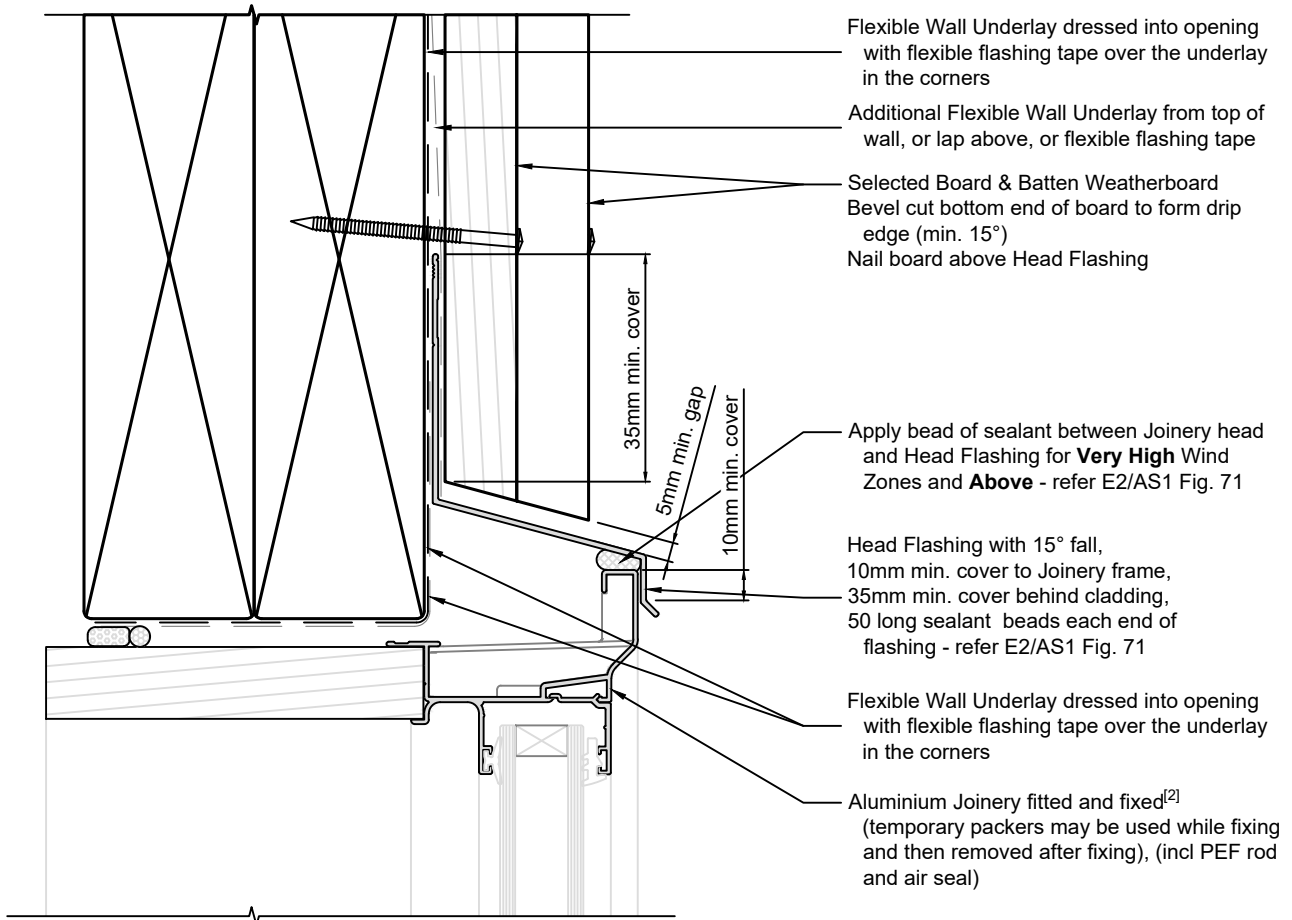
1:2 @ A4 2021/01/26

Drawing No.  
 2-1-602



**Note:**

- 1/ To comply similar to E2/AS1, Fig. 84
- 2/ Joinery Fixing to comply with E2/AS1 para. 9.1.10.8 - pairs of 75mm x 3.15mm galv. JH nails or 8g x 65mm s/s screws, through reveals into framing at max 150mm from corners and at 450mm centres along jamb
- 3/ Cladding Fixings to comply with E2/AS1 para. 9.4.3.1 & Tables 20 & 24



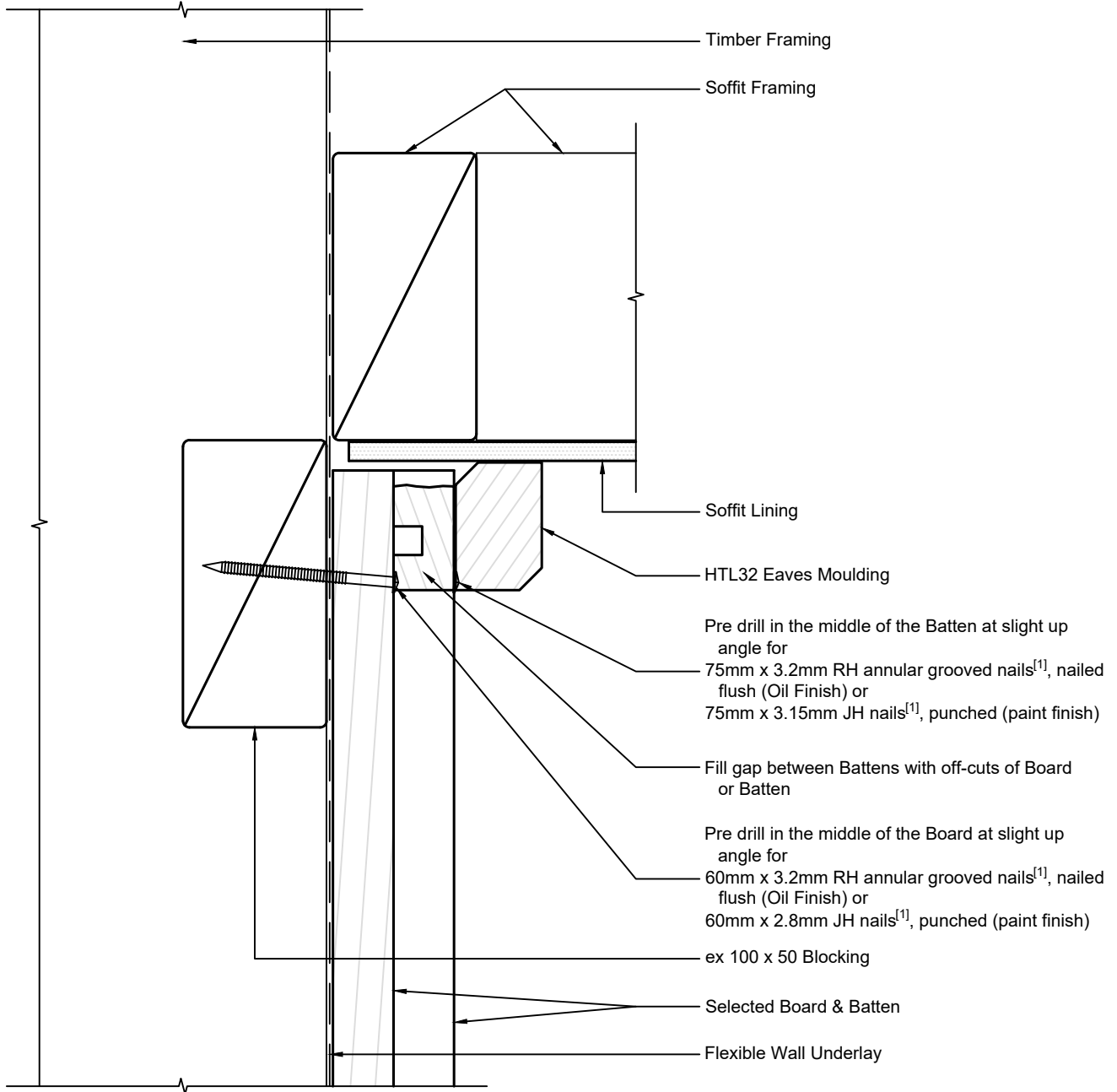
Ph: 03 544 6006  
 Email: sales@htlgroup.co.nz  
 Website: www.htlgroup.co.nz  
 48 Beach Road, Richmond, Nelson 7020  
 P O Box 3050, Richmond, Nelson 7050

**Board and Batten  
 Direct Fix - Flexible Underlay  
 Window Head detail**

1:2 @ A4 2021/01/26

Drawing No.  
 2-1-603

Note:  
 1/ Cladding Fixings to comply with  
 E2/AS1 para. 9.4.3.1 & Tables 20  
 & 24



Ph: 03 544 6006  
 Email: sales@htlgroup.co.nz  
 Website: www.htlgroup.co.nz  
 48 Beach Road, Richmond, Nelson 7020  
 P O Box 3050, Richmond, Nelson 7050

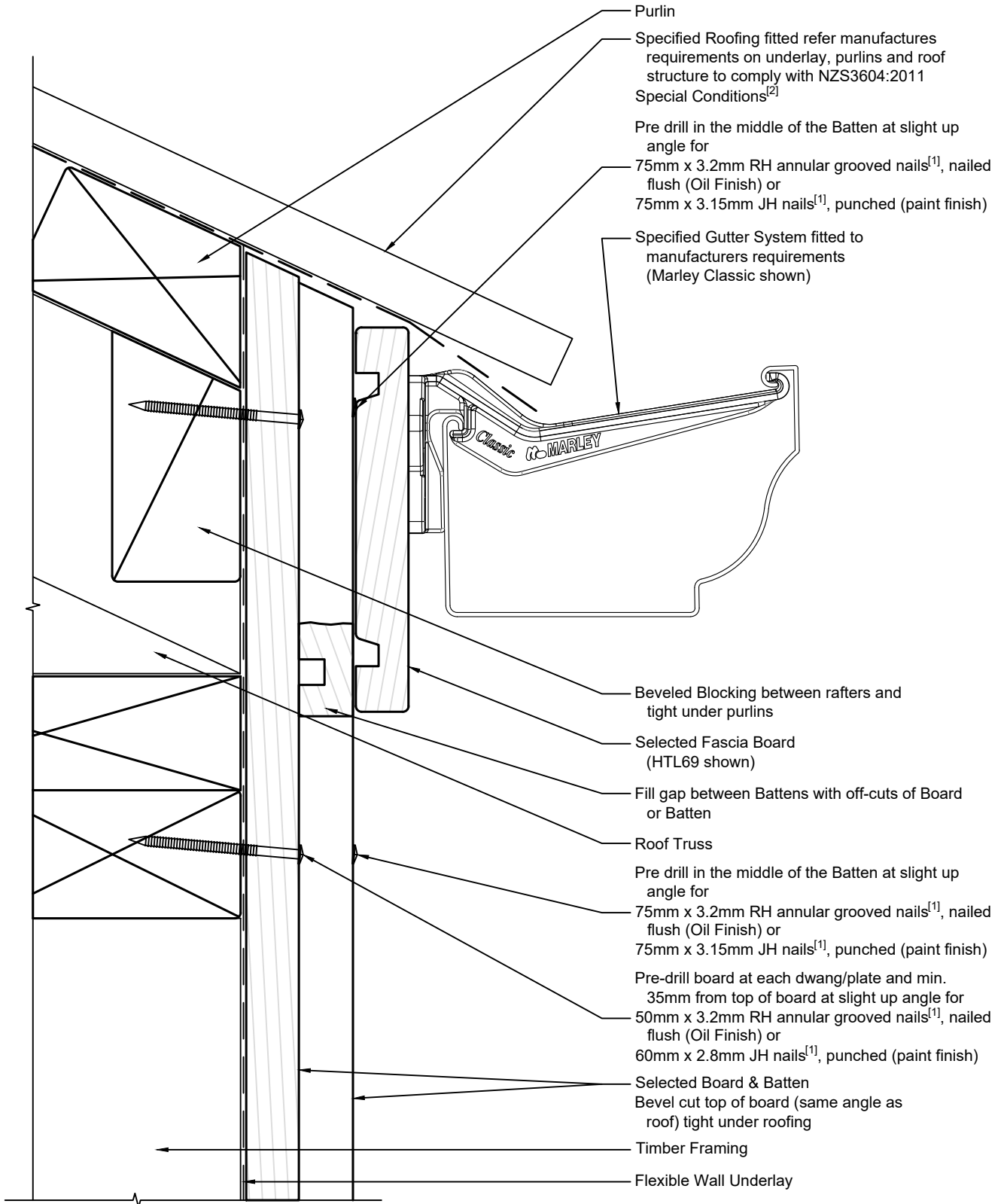
**Board and Batten**  
**Direct Fix - Flexible Underlay**  
**Soffit detail**

1:2 @ A4 2021/01/26

Drawing No.  
 2-1-801

**Note:**

- 1/ Cladding Fixings to comply with E2/AS1 para. 9.4.3.1 & Tables 20 & 24
- 2/ Eave flashing required for Special Conditions, refer E2/AS1 para. 8.4.12(d), Fig 45 & Table 7



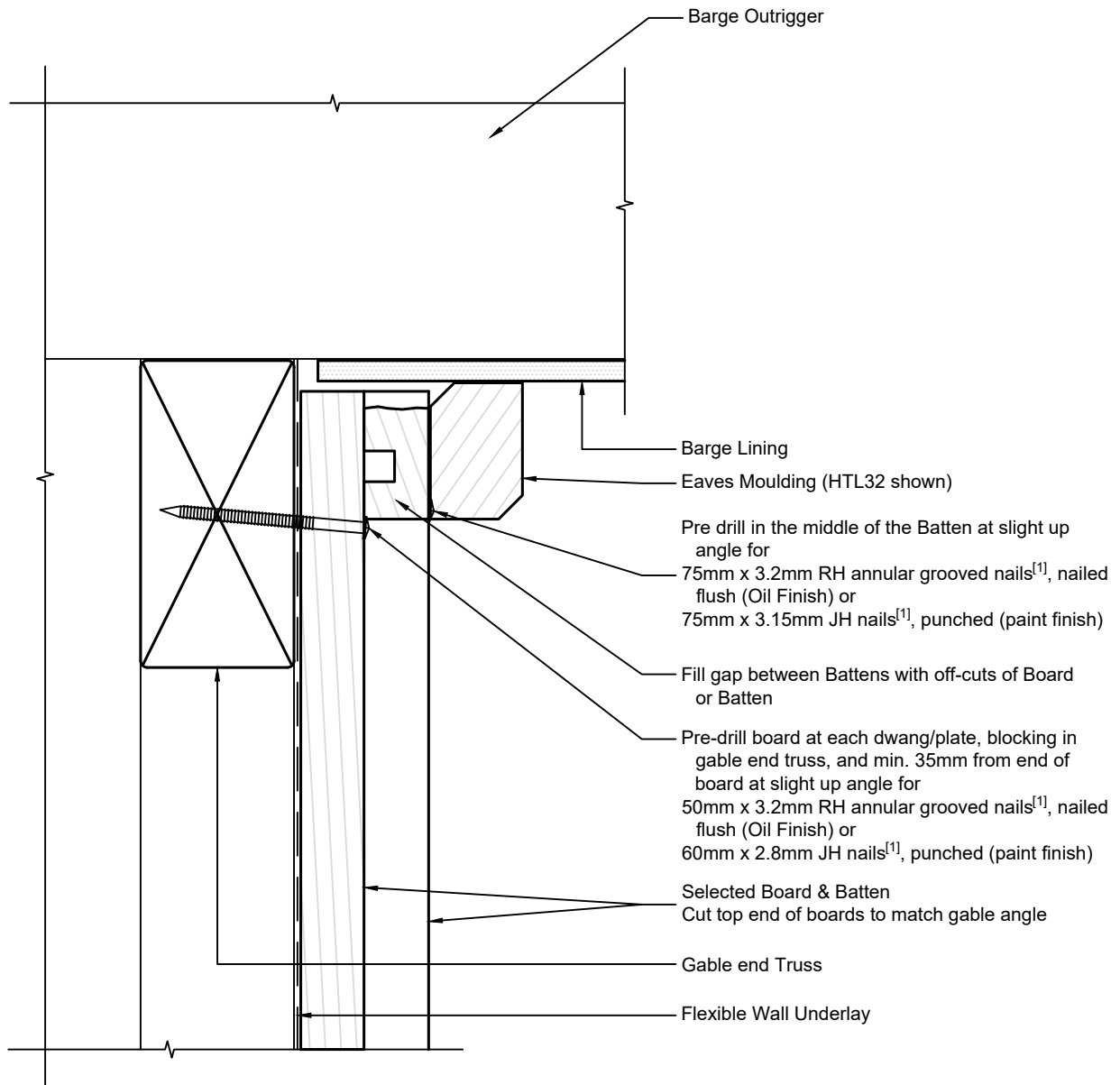
Ph: 03 544 6006  
 Email: sales@htlgroup.co.nz  
 Website: www.htlgroup.co.nz  
 48 Beach Road, Richmond, Nelson 7020  
 P O Box 3050, Richmond, Nelson 7050

**Board and Batten  
 Direct Fix - Flexible Underlay  
 Flush Eave detail**

1:2 @ A4 2021/01/26

Drawing No.  
 2-1-802

Note:  
 1/ Cladding Fixings to comply with  
 E2/AS1 para. 9.4.3.1 & Tables 20  
 & 24



Ph: 03 544 6006  
 Email: sales@htlgroup.co.nz  
 Website: www.htlgroup.co.nz  
 48 Beach Road, Richmond, Nelson 7020  
 P O Box 3050, Richmond, Nelson 7050

**Board and Batten**  
**Direct Fix - Flexible Underlay**  
**Barge Soffit detail**

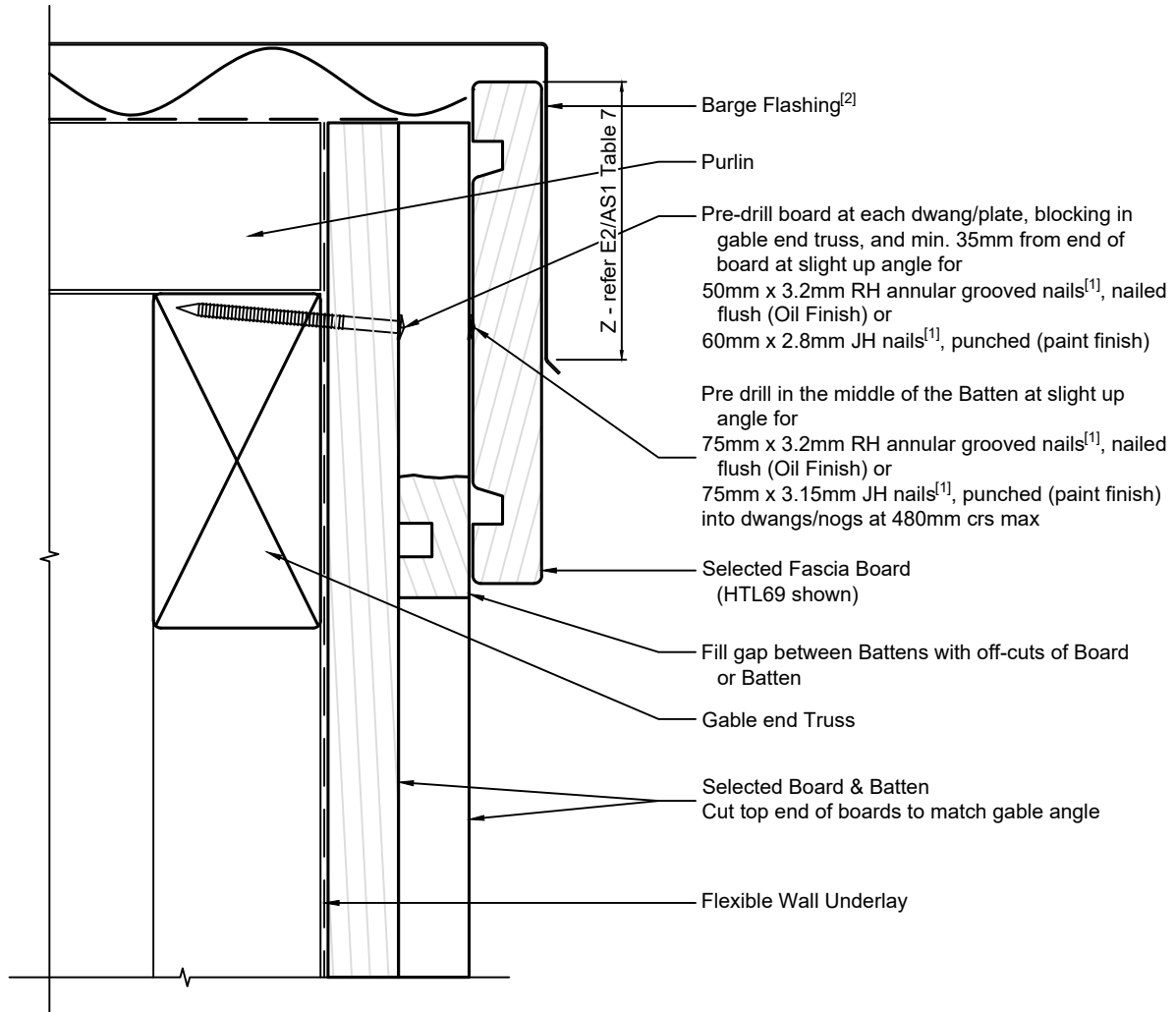
1:2 @ A4 2021/01/26

Drawing No.  
 2-1-851

**Note:**

1/ Cladding Fixings to comply with E2/AS1 para. 9.4.3.1 & Tables 20 & 24

2/ Barge Flashing to comply with E2/AS1 para. 8.4.12(f), Fig. 47 & Table 7



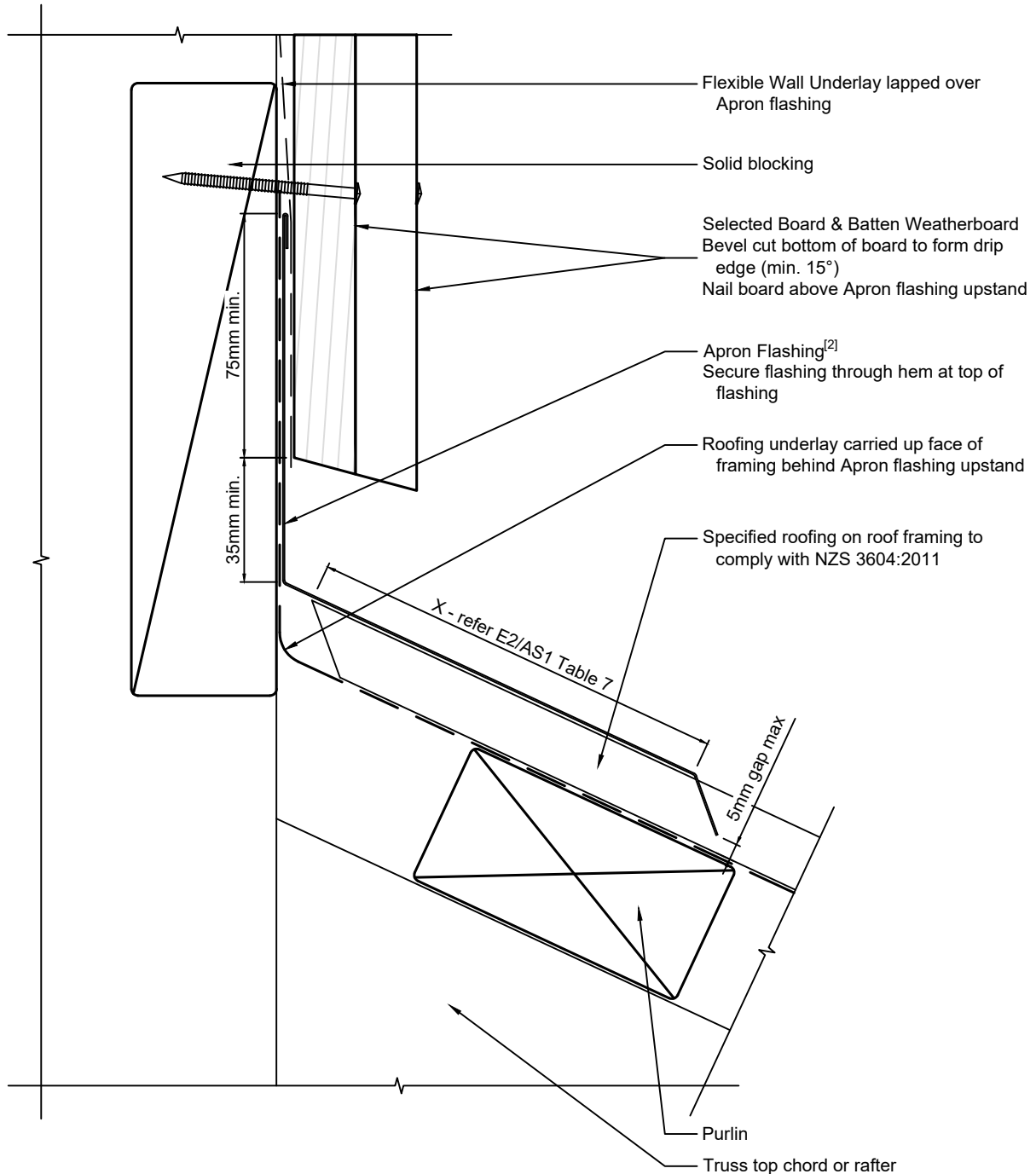
Ph: 03 544 6006  
 Email: sales@htlgroup.co.nz  
 Website: www.htlgroup.co.nz  
 48 Beach Road, Richmond, Nelson 7020  
 P O Box 3050, Richmond, Nelson 7050

**Board and Batten  
 Direct Fix - Flexible Underlay  
 Flush Barge detail**

1:2 @ A4 | 2021/01/26

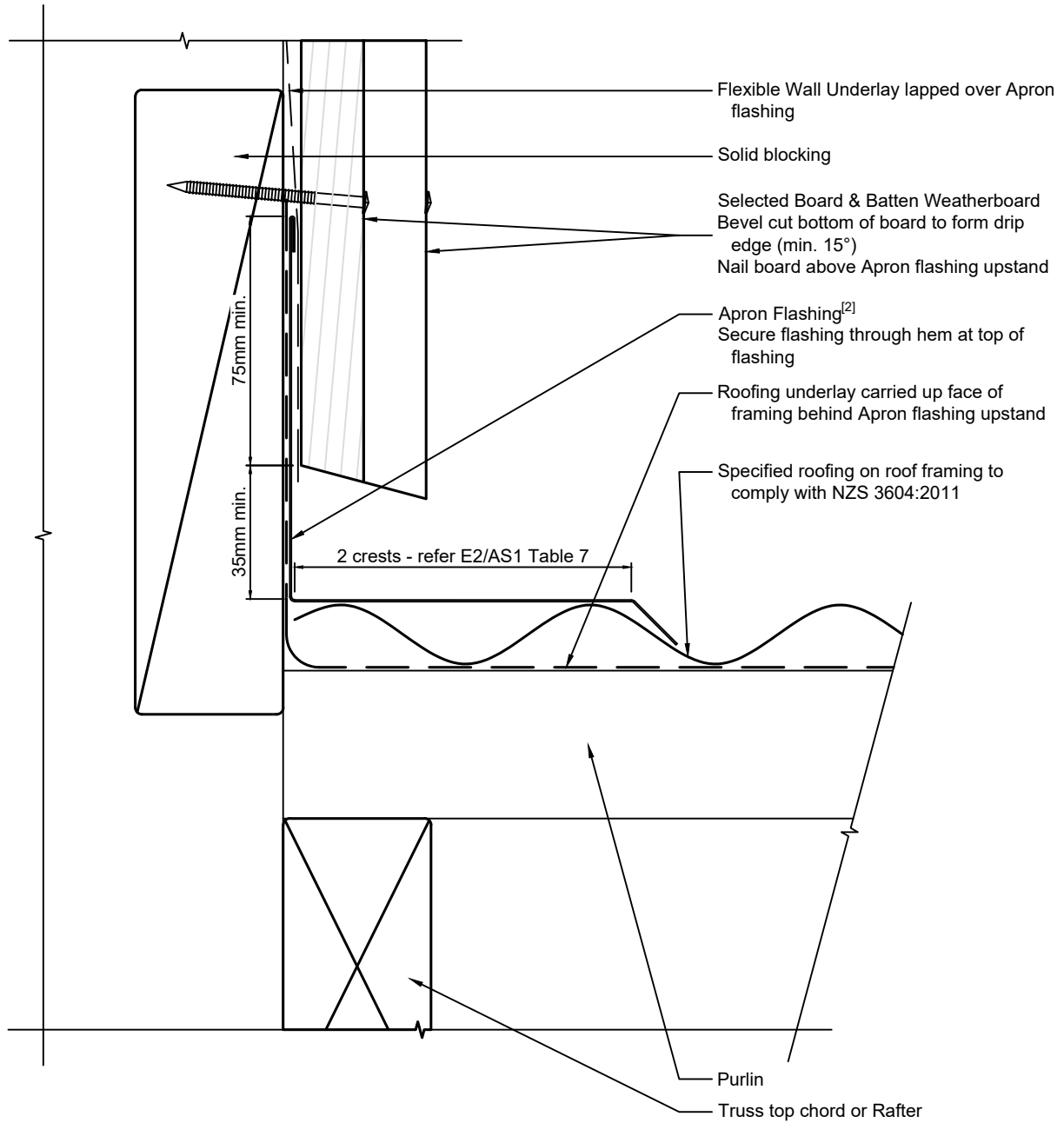
Drawing No.  
 2-1-852

Note:  
 1/ Cladding Fixings to comply with E2/AS1 para. 9.4.3.1 & Tables 20 & 24  
 2/ Apron Flashing to comply with E2/AS1 para. 4.6.1.1, Fig. 47 & Table 7



	Ph: 03 544 6006 Email: sales@htlgroup.co.nz Website: www.htlgroup.co.nz 48 Beach Road, Richmond, Nelson 7020 P O Box 3050, Richmond, Nelson 7050	<b>Board and Batten</b> <b>Direct Fix - Flexible Underlay</b> <b>Wall to Roof detail</b> <b>Top of roofing</b>	1:2 @ A4	2021/01/26
			Drawing No. 2-1-901	

Note:  
 1/ Cladding Fixings to comply with E2/AS1 para. 9.4.3.1 & Tables 20 & 24  
 2/ Apron Flashing to comply with E2/AS1 para. 4.6.1.1, Fig. 7 & Table 7



Ph: 03 544 6006  
 Email: sales@htlgroup.co.nz  
 Website: www.htlgroup.co.nz  
 48 Beach Road, Richmond, Nelson 7020  
 P O Box 3050, Richmond, Nelson 7050

**Board and Batten**  
**Direct Fix - Flexible Underlay**  
**Wall to Roof detail**  
**Side of roofing**

1:2 @ A4 2021/01/26

Drawing No.  
 2-1-902

Note:  
1/ The exception is vertical  
corrugated steel cladding

E2/AS1:2017 para. 6.0 requires that  
Parapets have Cladding over a  
drained cavity<sup>[1]</sup>, refer Detail 2-4-911



Ph: 03 544 6006  
Email: sales@htlgroup.co.nz  
Website: www.htlgroup.co.nz  
48 Beach Road, Richmond, Nelson 7020  
P O Box 3050, Richmond, Nelson 7050

**Board and Batten**  
**Direct Fix - Flexible Underlay**  
**Parapet note**

1:2 @ A4 | 2021/01/26

Drawing No.  
2-1-911



Note:

E2/AS1:2017 para. 9.1.9.4 requires that Inter-storey junctions are used for Cladding over a drained cavity, refer Detail 2-4-951



Ph: 03 544 6006  
Email: [sales@htlgroup.co.nz](mailto:sales@htlgroup.co.nz)  
Website: [www.htlgroup.co.nz](http://www.htlgroup.co.nz)  
48 Beach Road, Richmond, Nelson 7020  
P O Box 3050, Richmond, Nelson 7050

**Board and Batten  
Direct Fix - Flexible Underlay  
Inter-storey Break note**

1:2 @ A4    2021/01/26

Drawing No.  
2-1-951

Note:

E2/AS1:2017 para. 9.1.9.4 requires  
that Horizontal junctions are used for  
Cladding over a drained cavity, refer  
Detail 2-4-961



Ph: 03 544 6006  
Email: [sales@htlgroup.co.nz](mailto:sales@htlgroup.co.nz)  
Website: [www.htlgroup.co.nz](http://www.htlgroup.co.nz)  
48 Beach Road, Richmond, Nelson 7020  
P O Box 3050, Richmond, Nelson 7050

**Board and Batten  
Direct Fix - Flexible Underlay  
Horizontal Break note**

1:2 @ A4 2021/01/26

Drawing No.  
2-1-951