

Index

Details for - Board and Batten 20mm Cavity Batten - Flexible Underlay

| | |
|---------|---------------------------------|
| 2-4-001 | Index |
| 2-4-101 | Nail Fixing |
| 2-4-111 | Penetrations |
| 2-4-151 | Meter Box - Bottom |
| 2-4-152 | Meter Box - Side |
| 2-4-153 | Meter Box - Head |
| 2-4-211 | Bottom of Wall - Timber Floor |
| 2-4-221 | Bottom of Wall - Concrete Floor |
| 2-4-301 | External Boxed Corner |
| 2-4-351 | Internal Corner - Option A |
| 2-4-352 | Internal Corner - Option B |
| 2-4-501 | Door Sill |
| 2-4-502 | Door Jamb |
| 2-4-503 | Door Head |
| 2-4-601 | Window Sill |
| 2-4-602 | Window Jamb |
| 2-4-603 | Window Head |
| 2-4-801 | Eave Soffit |
| 2-4-802 | Flush Eave |
| 2-4-851 | Barge Soffit |
| 2-4-852 | Flush Barge |
| 2-4-901 | Roof to Wall - Top of roofing |
| 2-4-902 | Roof to Wall - Side of roofing |
| 2-4-911 | Parapet |
| 2-4-951 | Inter-storey Break |
| 2-4-961 | Horizontal Break |

Notes:

Standards referred to in these Details;

- E2/AS1 External Moisture (Amendment 9 June 2019)
- NZS3604:2011 Timber-framed Buildings

All Details have been 'exploded' for clarity

Aluminium Joinery profiles used in these details are from "Nulook", change these profiles for the profiles of the Joinery company you are using



Ph: 03 544 6006
Email: sales@htlgroup.co.nz
Website: www.htlgroup.co.nz
48 Beach Road, Richmond, Nelson 7020
P O Box 3050, Richmond, Nelson 7050

Board and Batten
20mm Cavity Batten - Flexible Underlay
Index

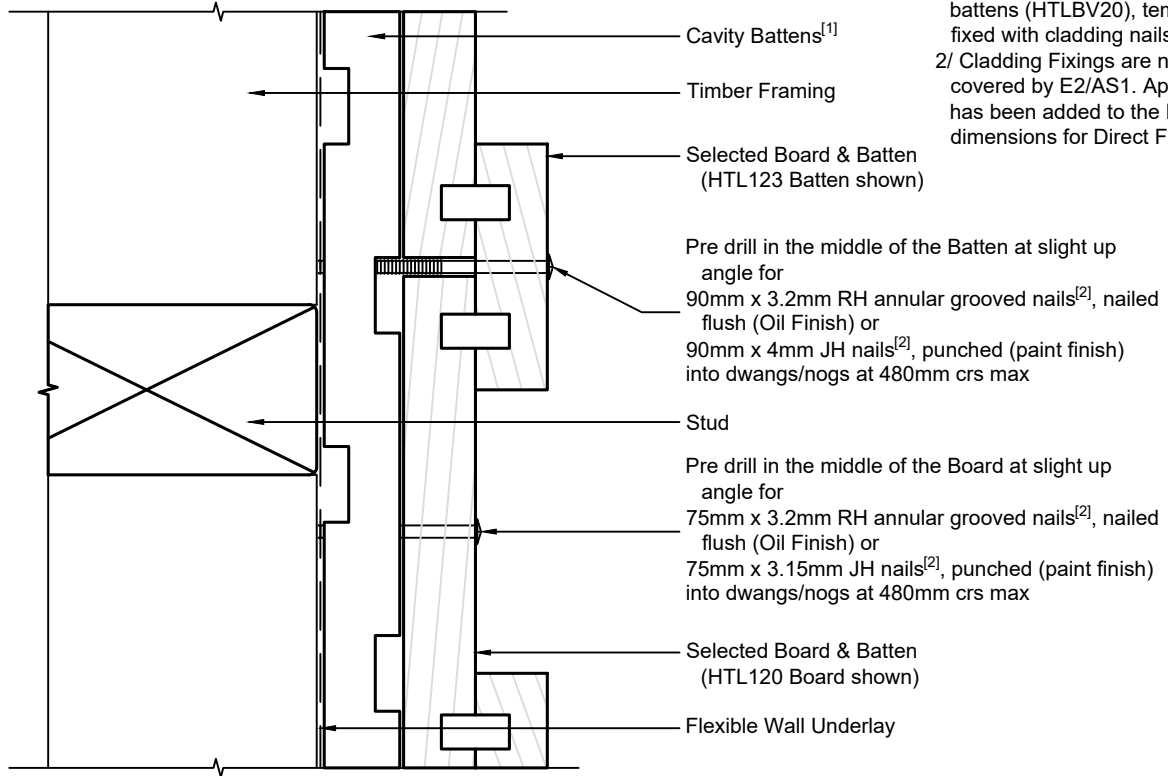
1:1 @ A4

2021/01/26

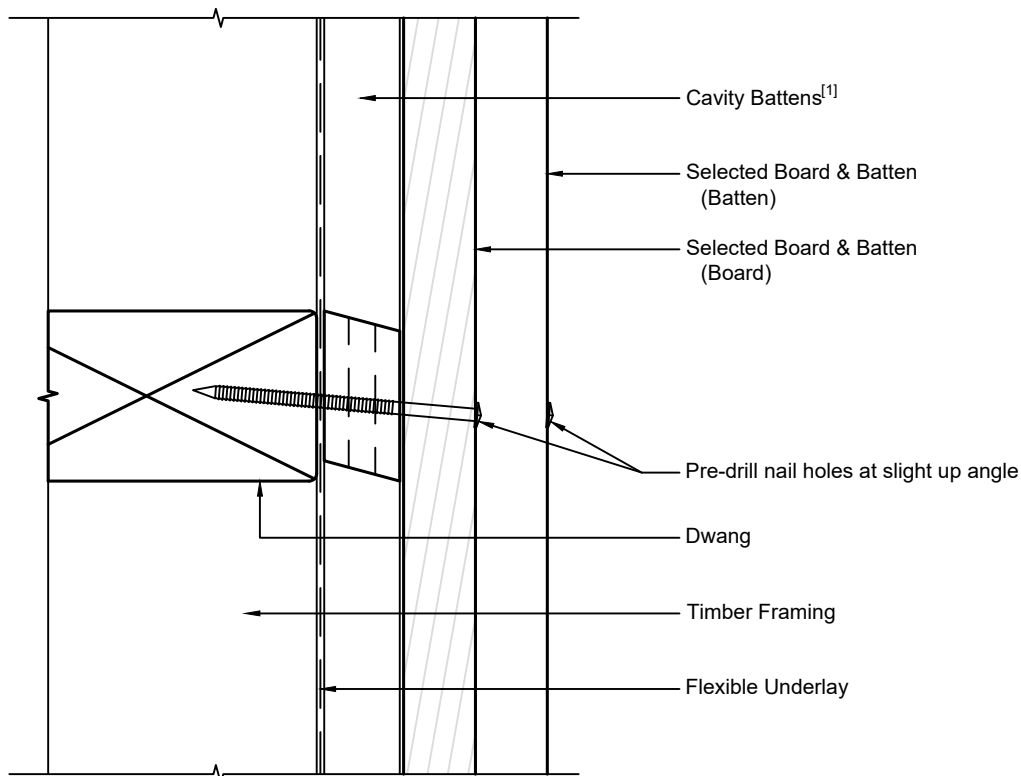
Drawing No.
2-4-001

Note:

- 1/ Cavity Battens are Horizontal Castellated timber battens (HTLBH20) and plain vertical battens (HTLBV20), temporarily fixed with cladding nails
- 2/ Cladding Fixings are not currently covered by E2/AS1. Approx 20mm has been added to the E2/AS1 dimensions for Direct Fixed



Horizontal Cross section



Vertical cross section



Ph: 03 544 6006
 Email: sales@htlgroup.co.nz
 Website: www.htlgroup.co.nz
 48 Beach Road, Richmond, Nelson 7020
 P O Box 3050, Richmond, Nelson 7050

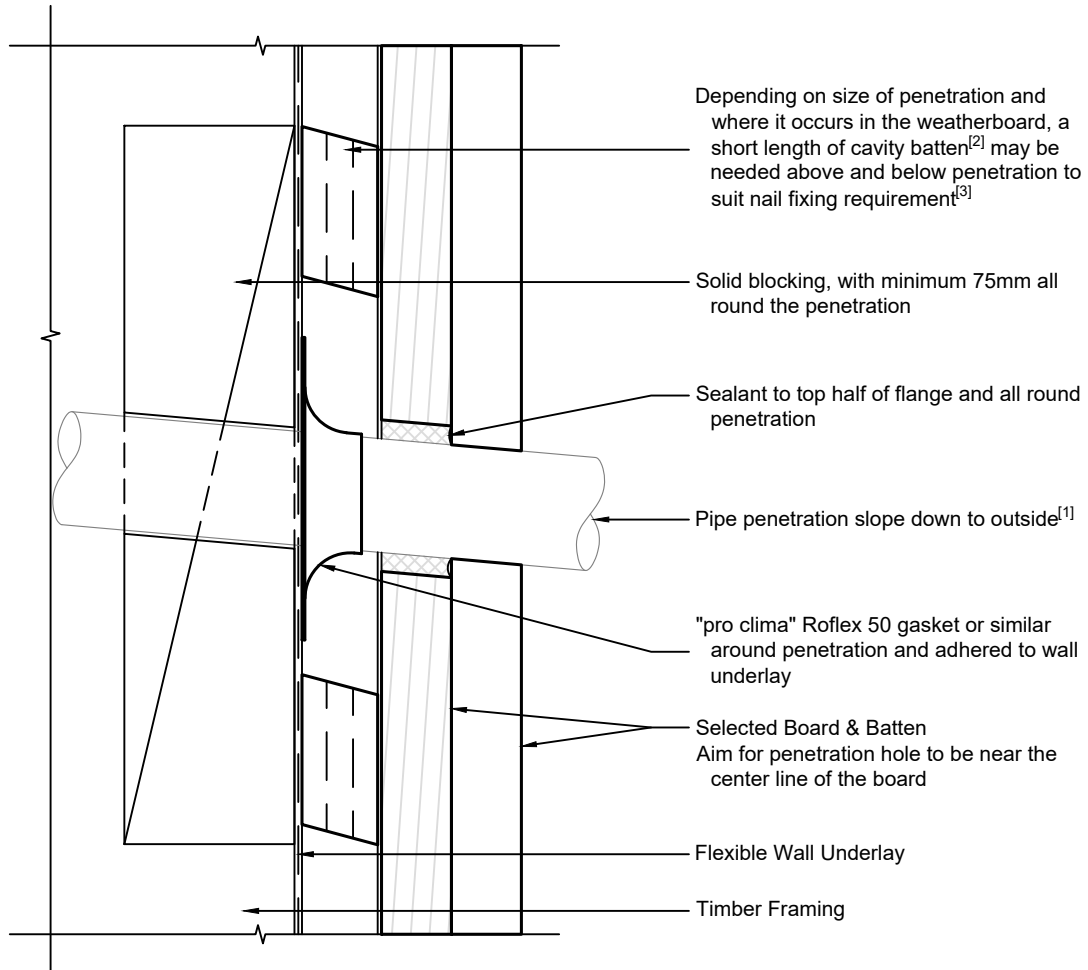
Board and Batten
20mm Cavity Batten - Flexible Underlay
Nail Fixing detail

1:2 @ A4 2021/01/26

Drawing No.
 2-4-101

Note:

- 1/ Penetration to comply with E2/AS1 para. 9.1.9.3 & Fig. 68
- 2/ Cavity Battens are Horizontal Castellated timber battens (HTLBH20) and plain vertical battens (HTLBV20), temporarily fixed with cladding nails
- 3/ Cladding Fixings are not currently covered by E2/AS1. Approx 20mm has been added to the E2/AS1 dimensions for Direct Fixed



Ph: 03 544 6006
Email: sales@htlgroup.co.nz
Website: www.htlgroup.co.nz
48 Beach Road, Richmond, Nelson 7020
P O Box 3050, Richmond, Nelson 7050

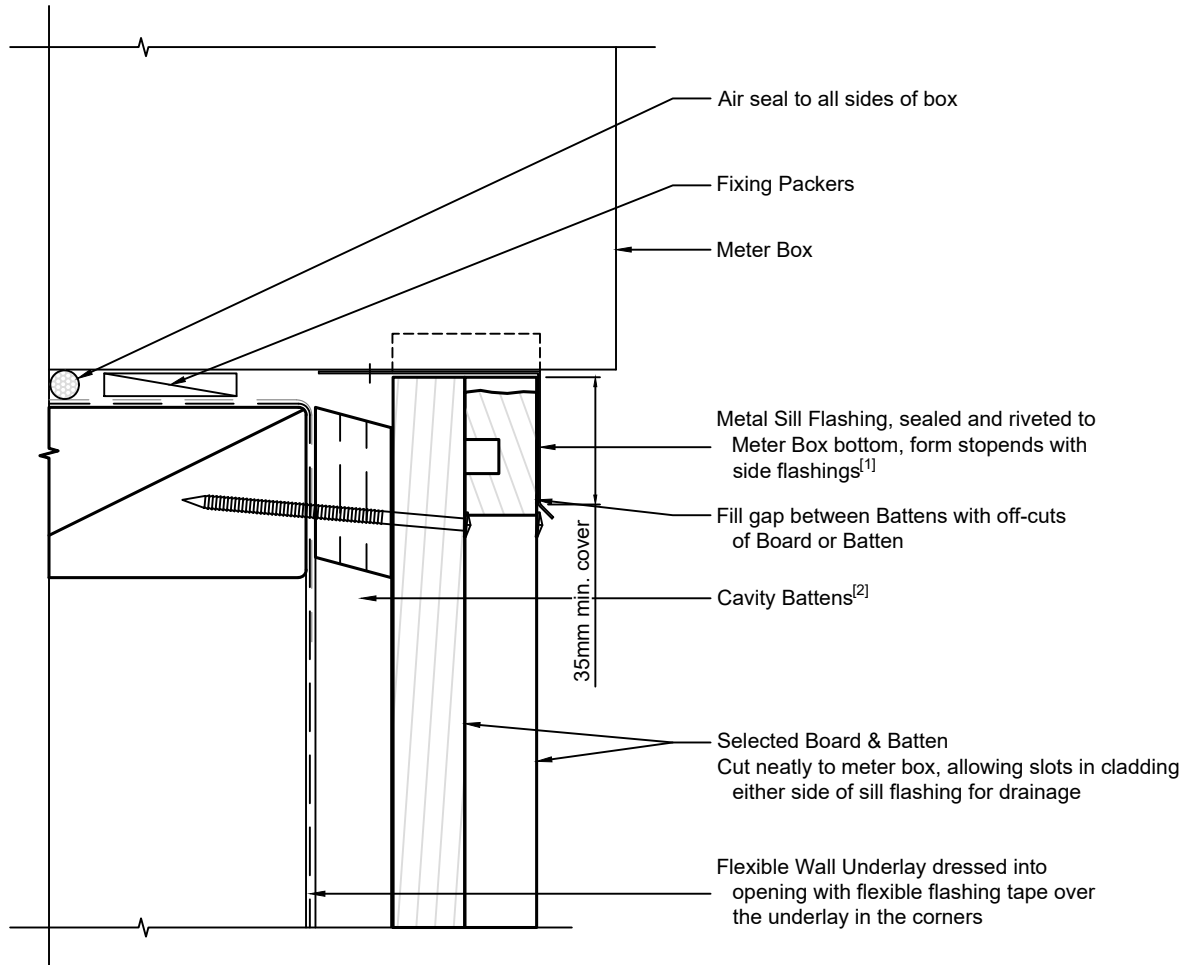
Board and Batten
20mm Cavity Batten - Flexible Underlay
Penetrations detail

1:2 @ A4 2021/01/26

Drawing No.
2-4-111

Note:

- 1/ To comply with E2/AS1 para. 9.1.9.3
- 2/ Cavity Battens are Horizontal Castellated timber battens (HTLBH20) and plain vertical battens (HTLBV20), temporarily fixed with cladding nails
- 3/ Cladding Fixings are not currently covered by E2/AS1. Approx 20mm has been added to the E2/AS1 dimensions for Direct Fixed



Ph: 03 544 6006
Email: sales@htlgroup.co.nz
Website: www.htlgroup.co.nz
48 Beach Road, Richmond, Nelson 7020
P O Box 3050, Richmond, Nelson 7050

Board and Batten
20mm Cavity Batten - Flexible Underlay
Meter Box - Bottom detail

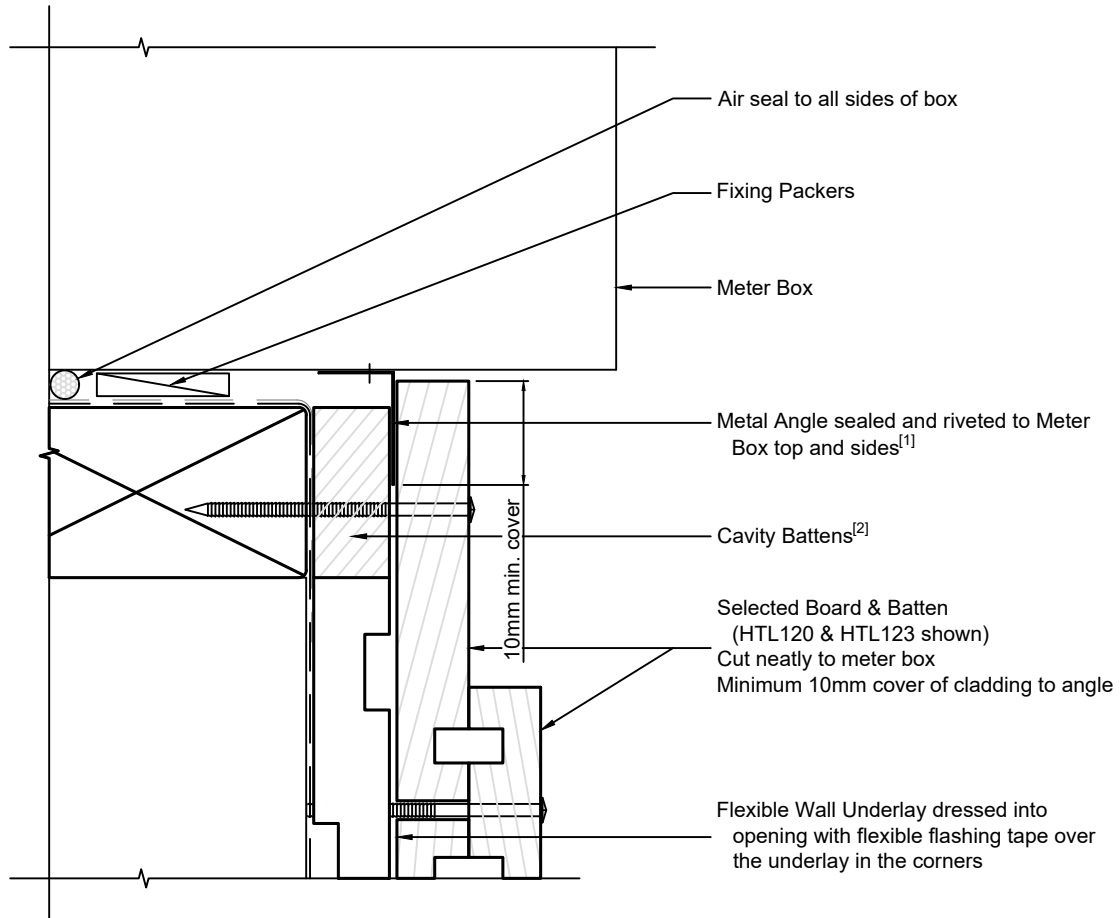
1:2 @ A4

2021/01/26

Drawing No.
2-4-151

Note:

- 1/ To comply with E2/AS1 para. 9.1.9.3
- 2/ Cavity Battens are Horizontal Castellated timber battens (HTLBH20) and plain vertical battens (HTLBV20), temporarily fixed with cladding nails
- 3/ Cladding Fixings are not currently covered by E2/AS1. Approx 20mm has been added to the E2/AS1 dimensions for Direct Fixed



Ph: 03 544 6006
Email: sales@htlgroup.co.nz
Website: www.htlgroup.co.nz
48 Beach Road, Richmond, Nelson 7020
P O Box 3050, Richmond, Nelson 7050

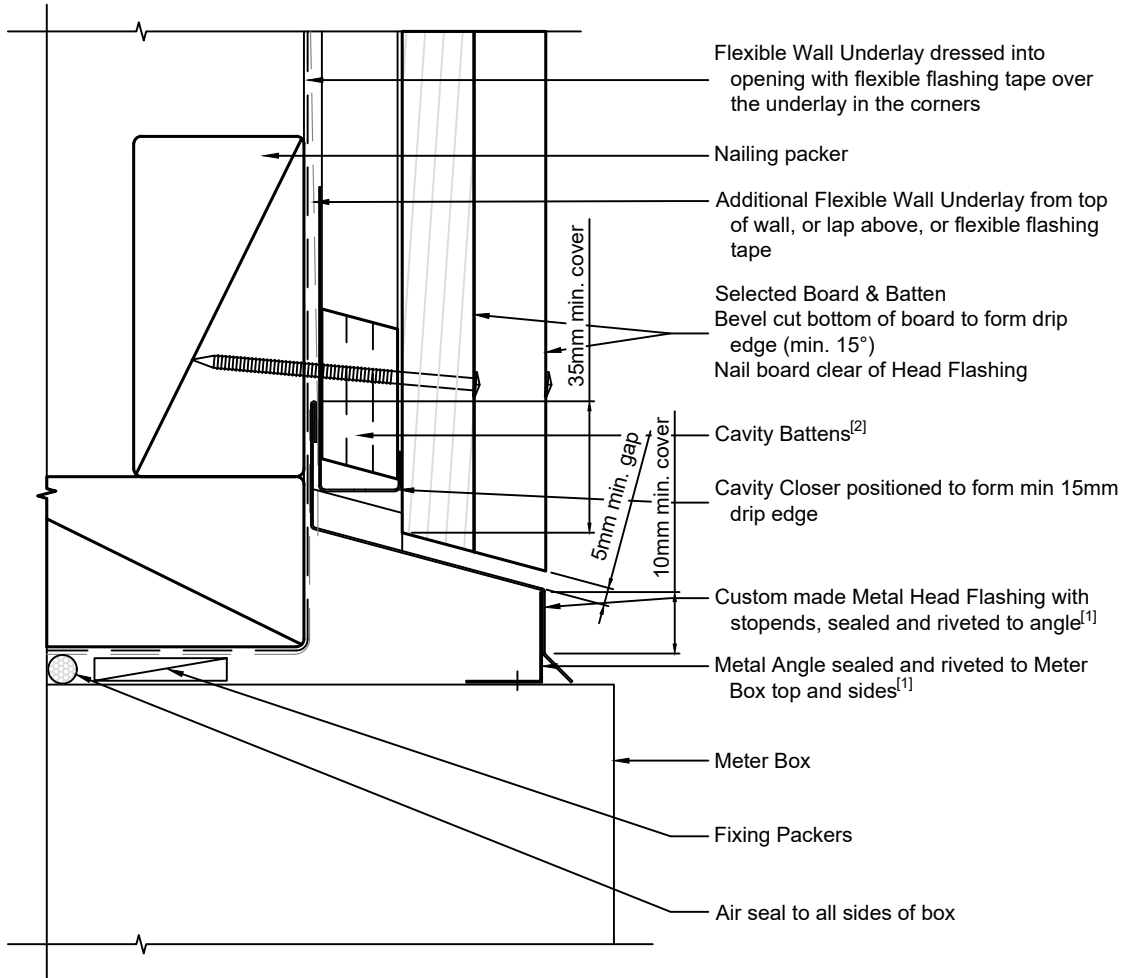
Board and Batten
20mm Cavity Batten - Flexible Underlay
Meter Box - Side detail

1:2 @ A4 2021/01/26

Drawing No.
2-4-152

Note:

- 1/ To comply with E2/AS1 para. 9.1.9.3 & Fig. 69
- 2/ Cavity Battens are Horizontal Castellated timber battens (HTLBH20) and plain vertical battens (HTLBV20), temporarily fixed with cladding nails
- 3/ Cladding Fixings are not currently covered by E2/AS1. Approx 20mm has been added to the E2/AS1 dimensions for Direct Fixed



Ph: 03 544 6006
 Email: sales@htlgroup.co.nz
 Website: www.htlgroup.co.nz
 48 Beach Road, Richmond, Nelson 7020
 P O Box 3050, Richmond, Nelson 7050

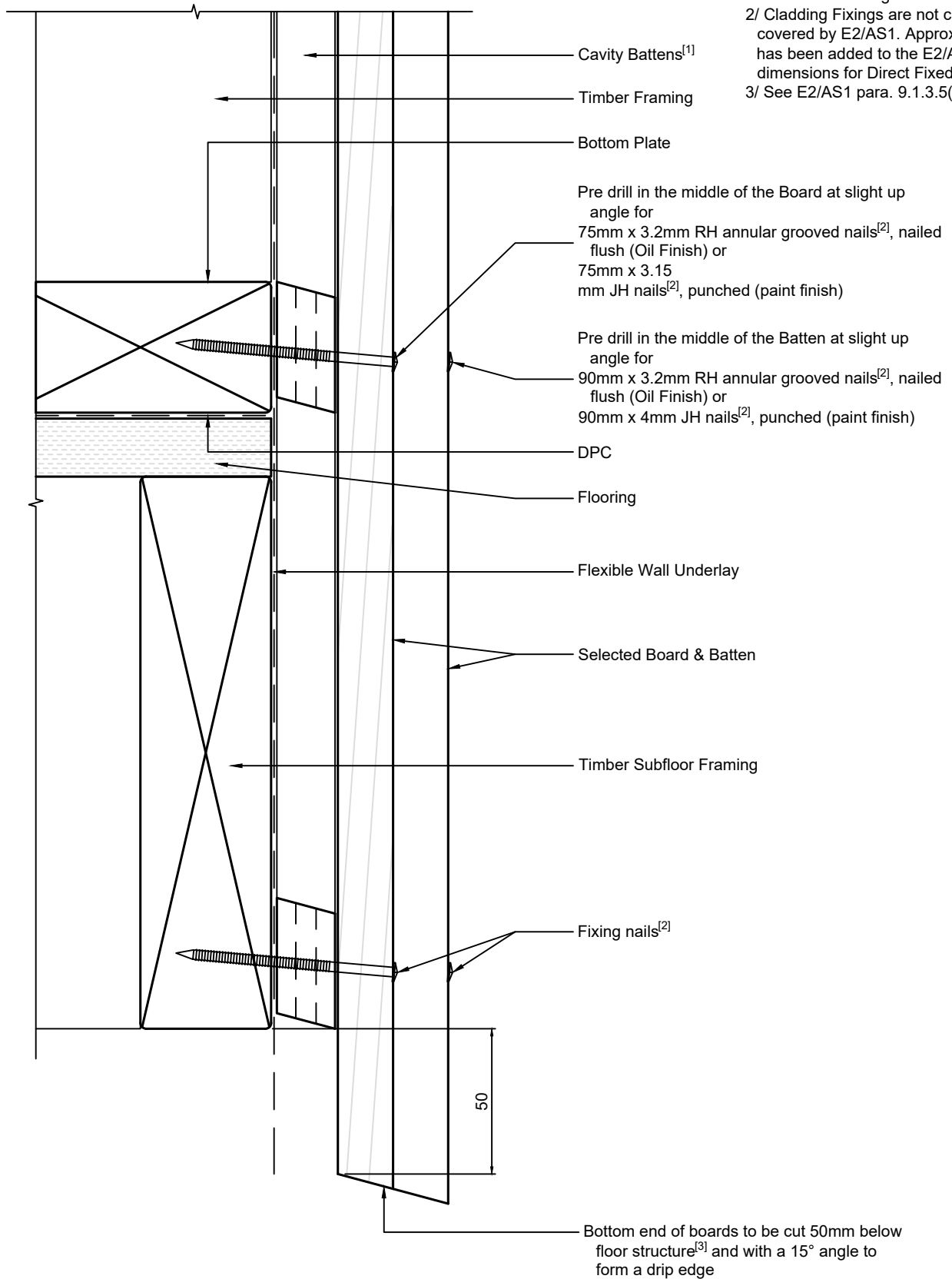
**Board and Batten
 20mm Cavity Batten - Flexible Underlay
 Meter Box - Head detail**

1:2 @ A4 2021/01/26

Drawing No.
 2-4-153

Note:

- 1/ Cavity Battens are Horizontal Castellated timber battens (HTLBH20) and plain vertical battens (HTLBV20), temporarily fixed with cladding nails
- 2/ Cladding Fixings are not currently covered by E2/AS1. Approx 20mm has been added to the E2/AS1 dimensions for Direct Fixed
- 3/ See E2/AS1 para. 9.1.3.5(a)



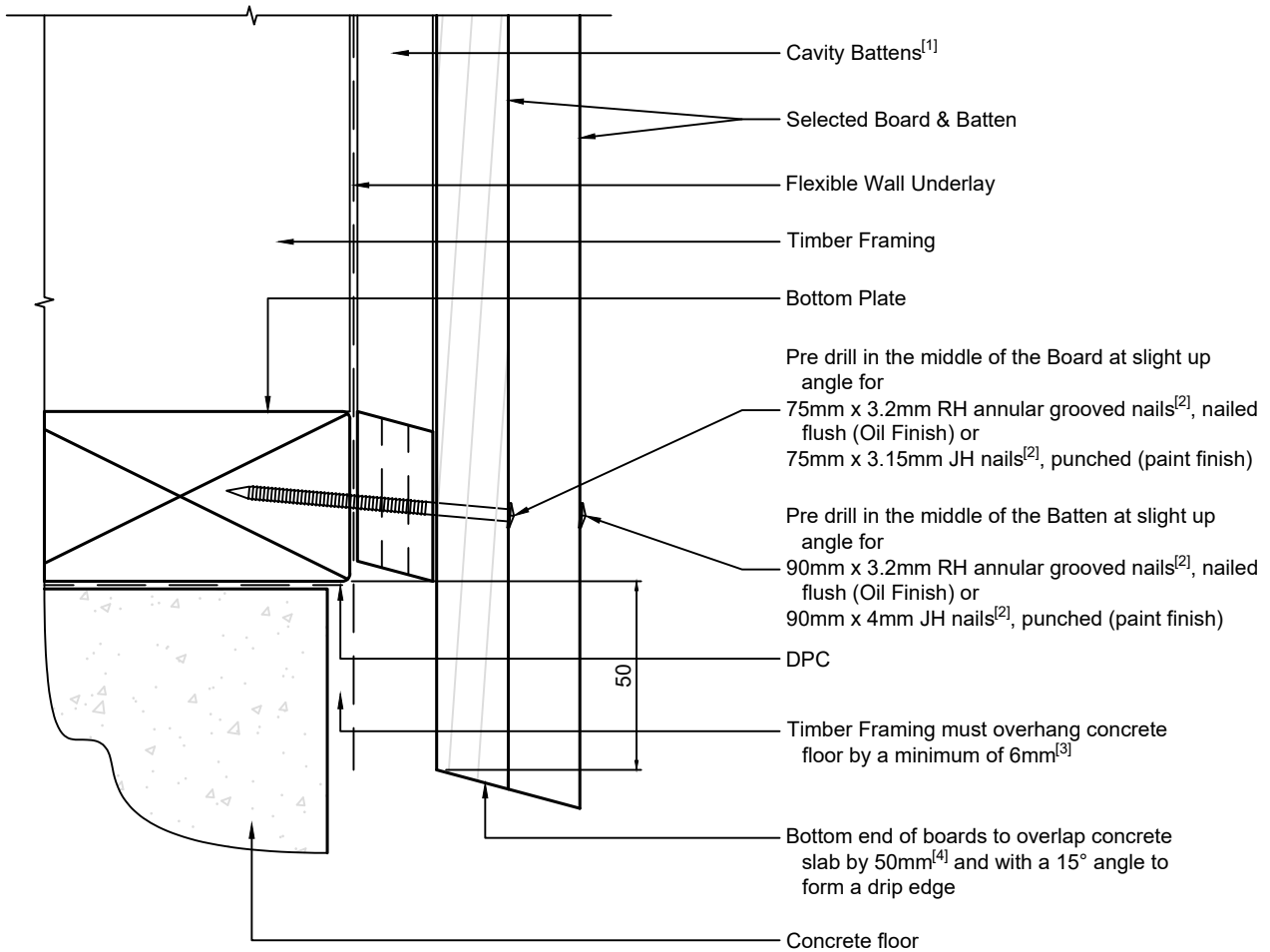
Ph: 03 544 6006
 Email: sales@htlgroup.co.nz
 Website: www.htlgroup.co.nz
 48 Beach Road, Richmond, Nelson 7020
 P O Box 3050, Richmond, Nelson 7050

Board and Batten
20mm Cavity Batten - Flexible Underlay
Bottom of Wall detail
Timber Floor

| | |
|---------------------|------------|
| 1:2 @ A4 | 2021/01/26 |
| Drawing No. 2-4-211 | |

Note:

- 1/ Cavity Battens are Horizontal Castellated timber battens (HTLBH20) and plain vertical battens (HTLBV20), temporarily fixed with cladding nails
- 2/ Cladding Fixings are not currently covered by E2/AS1. Approx 20mm has been added to the E2/AS1 dimensions for Direct Fixed
- 3/ See E2/AS1 para. 9.1.3.3(c)
- 4/ See E2/AS1 para. 9.1.3.3(b)



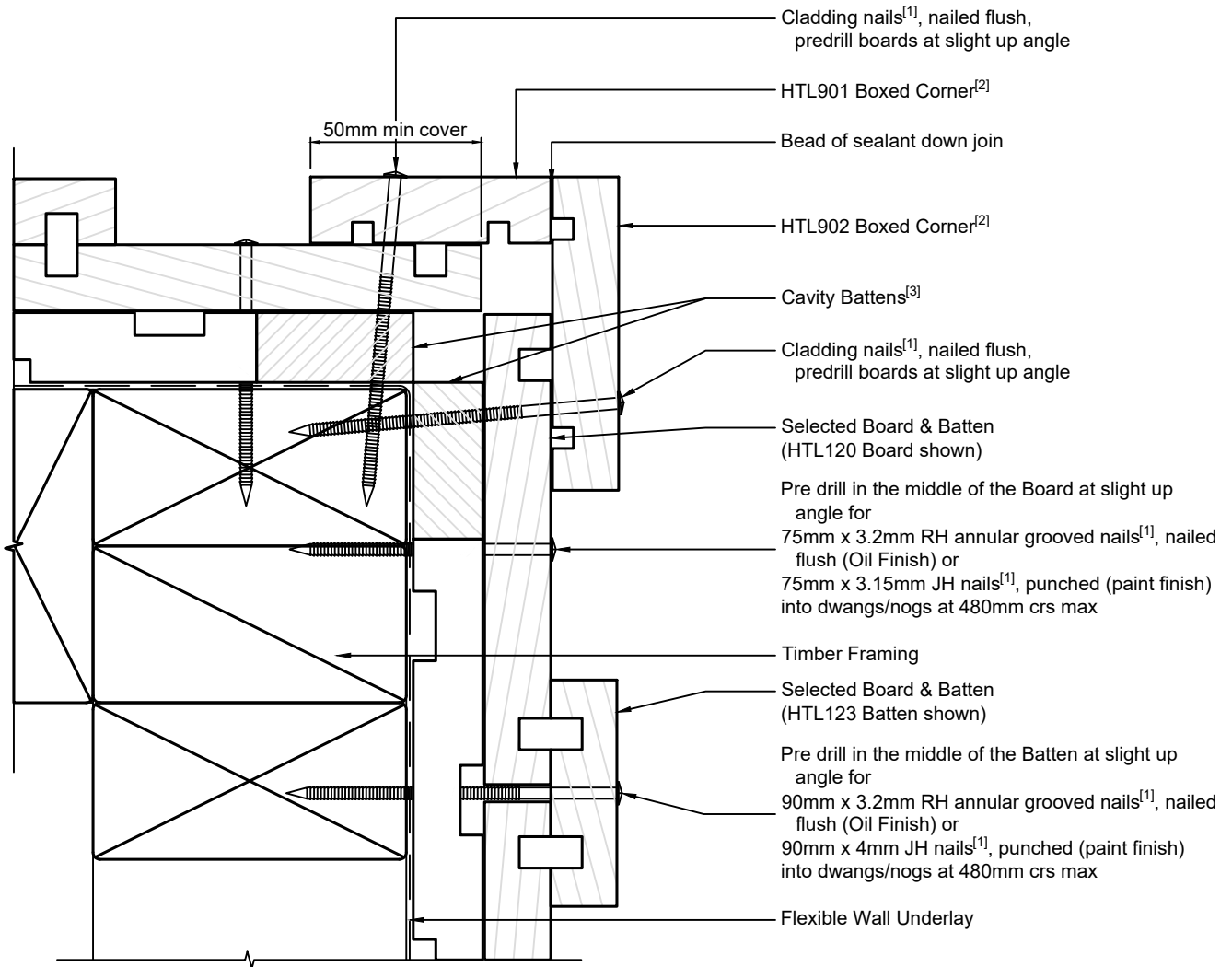
Ph: 03 544 6006
 Email: sales@htlgroup.co.nz
 Website: www.htlgroup.co.nz
 48 Beach Road, Richmond, Nelson 7020
 P O Box 3050, Richmond, Nelson 7050

Board and Batten
20mm Cavity Batten - Flexible Underlay
Bottom of Wall detail
Concrete Floor

| | |
|---------------------|------------|
| 1:2 @ A4 | 2021/01/26 |
| Drawing No. 2-4-221 | |

Note:

- 1/ Cladding Fixings are not currently covered by E2/AS1. Approx 20mm has been added to the E2/AS1 dimensions for Direct Fixed
- 2/ The minimum cover of Boxed Corner boards to comply with E2/AS1 para. 9.4.5.3(a) & Fig. 80
- 3/ Cavity Battens are Horizontal Castellated timber battens (HTLBH20) and plain vertical battens (HTLBV20), temporarily fixed with cladding nails



Ph: 03 544 6006
 Email: sales@htlgroup.co.nz
 Website: www.htlgroup.co.nz
 48 Beach Road, Richmond, Nelson 7020
 P O Box 3050, Richmond, Nelson 7050

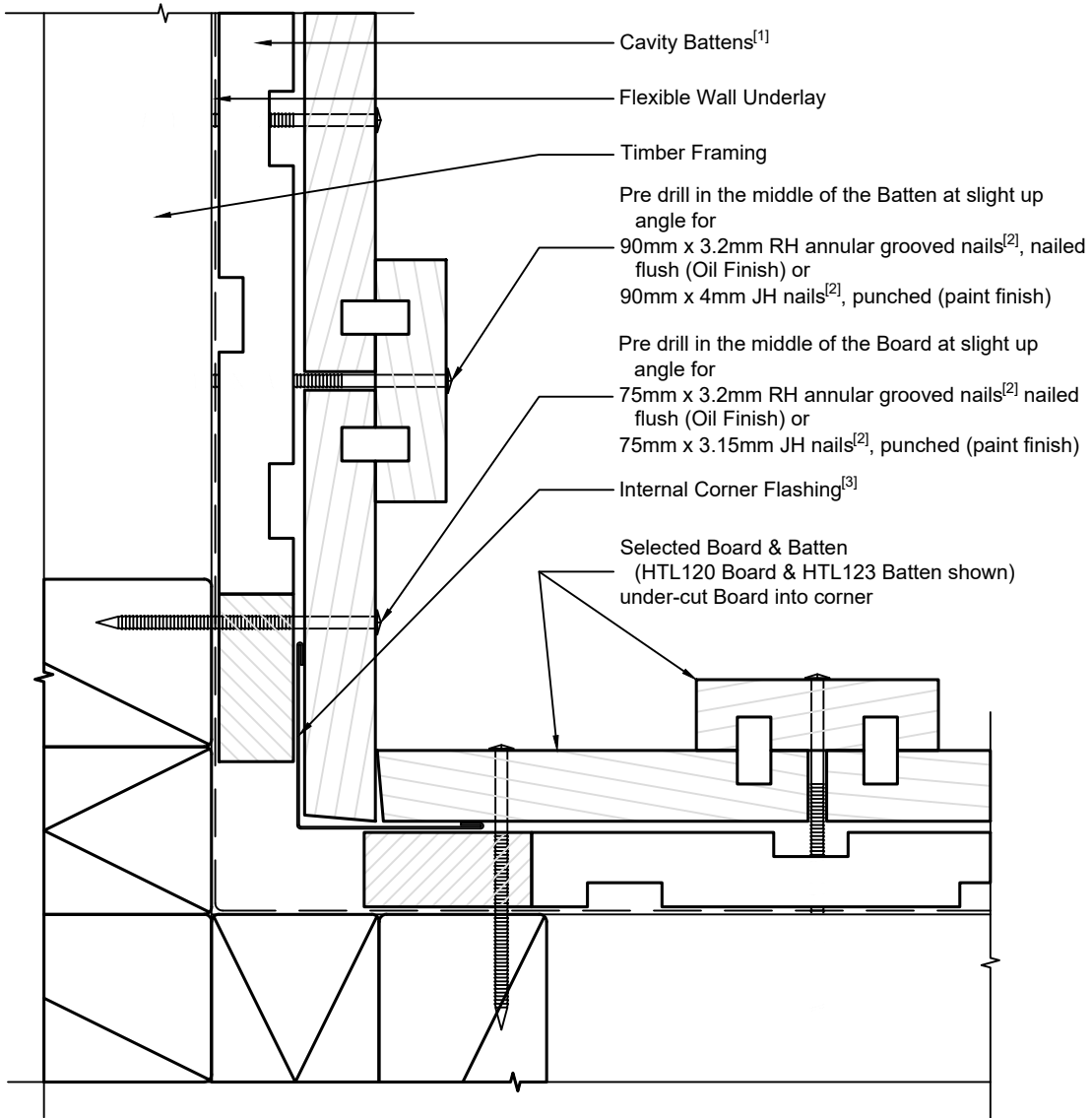
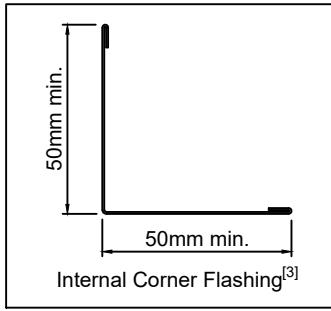
Board and Batten
20mm Cavity Batten - Flexible Underlay
External Corner detail

1:2 @ A4 2021/01/26

Drawing No.
 2-4-301

Note:

- 1/ Cavity Battens are Horizontal Castellated timber battens (HTLBH20) and plain vertical battens (HTLBV20), temporarily fixed with cladding nails
- 2/ Cladding Fixings are not currently covered by E2/AS1. Approx 20mm has been added to the E2/AS1 dimensions for Direct Fixed
- 3/ Corner Flashing dimensions to comply with E2/AS1 para. 9.4.5.3(b) & Fig. 79(c) & Table 7



Option A



Ph: 03 544 6006
Email: sales@htlgroup.co.nz
Website: www.htlgroup.co.nz
48 Beach Road, Richmond, Nelson 7020
P O Box 3050, Richmond, Nelson 7050

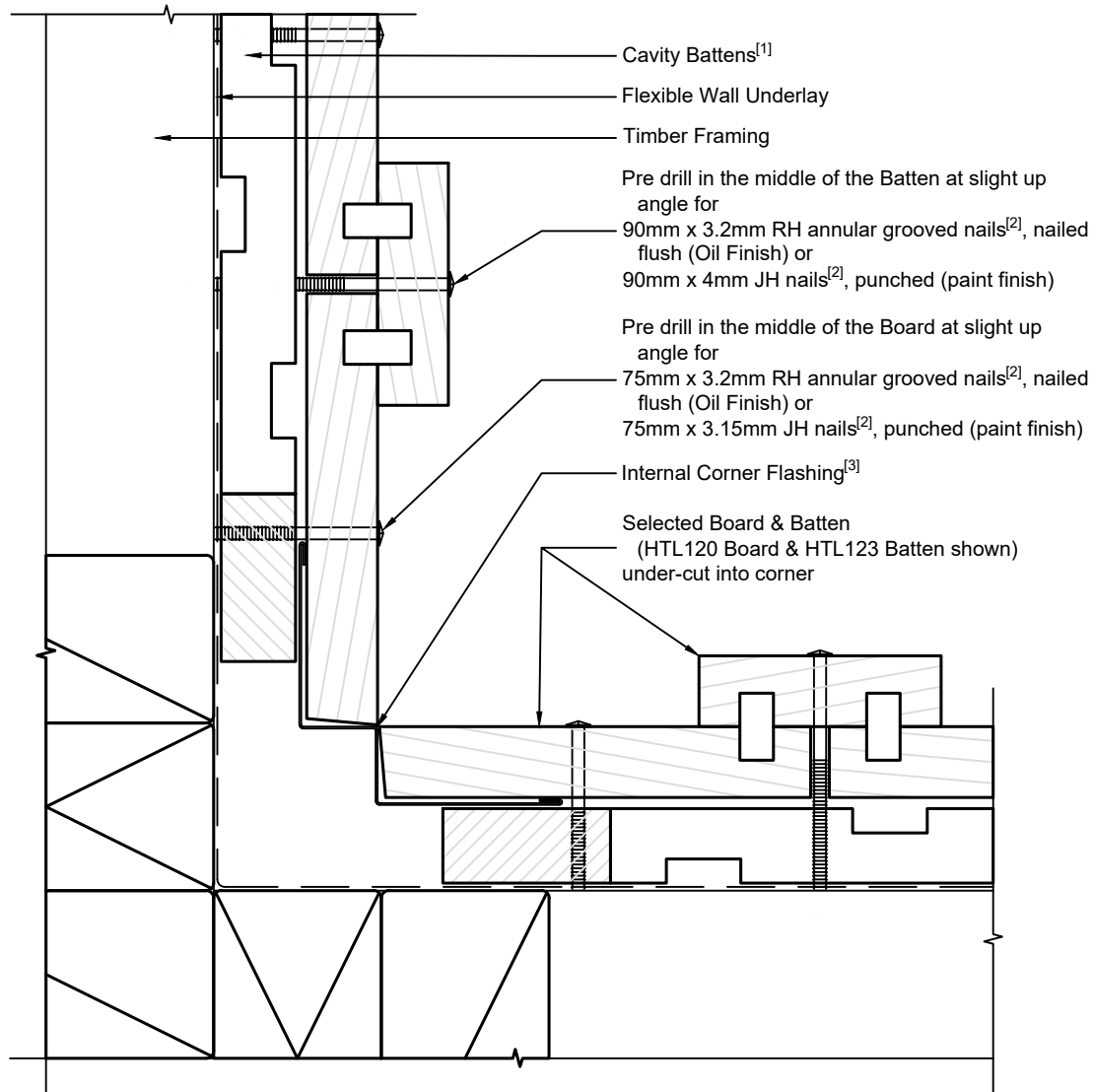
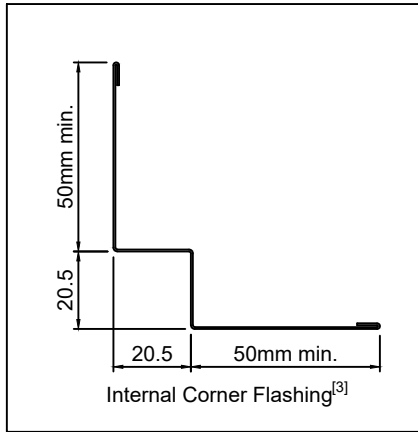
Board and Batten
20mm Cavity Batten - Flexible Underlay
Internal Corner detail
Option A

1:2 @ A4 2021/01/26

Drawing No.
2-4-351

Note:

- 1/ Cavity Battens are Horizontal Castellated timber battens (HTLBH20) and plain vertical battens (HTLBV20), temporarily fixed with cladding nails
- 2/ Cladding Fixings are not currently covered by E2/AS1. Approx 20mm has been added to the E2/AS1 dimensions for Direct Fixed
- 3/ Corner Flashing dimensions to comply with E2/AS1 para. 9.4.5.3(b) & Fig. 79(d) & Table 7



Option B



Ph: 03 544 6006
 Email: sales@htlgroup.co.nz
 Website: www.htlgroup.co.nz
 48 Beach Road, Richmond, Nelson 7020
 P O Box 3050, Richmond, Nelson 7050

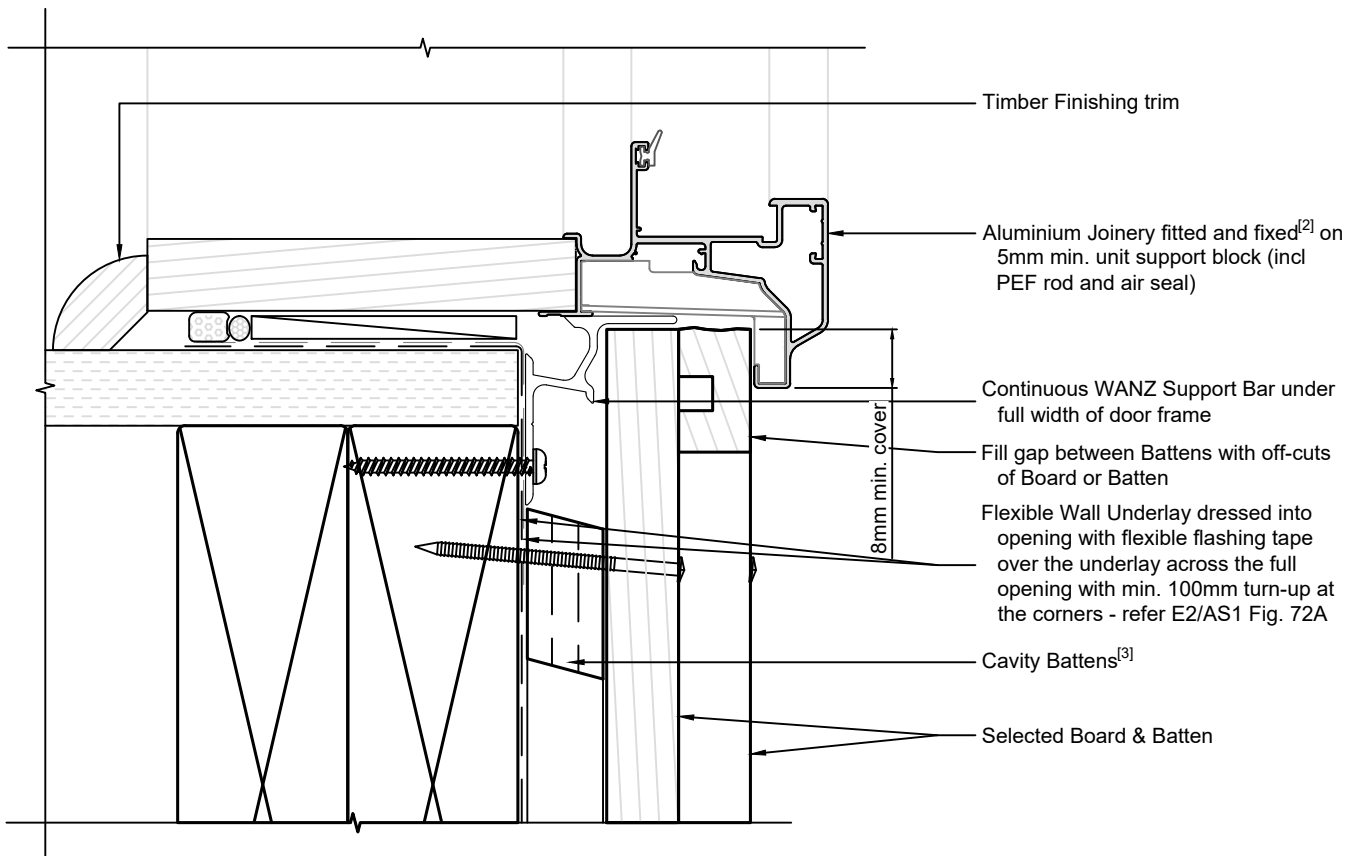
Board and Batten
20mm Cavity Batten - Flexible Underlay
Internal Corner detail
Option B

1:2 @ A4 2021/01/26

Drawing No.
 2-4-352

Note:

- 1/ To comply similar to E2/AS1, Fig. 84
- 2/ Joinery Fixing to comply with E2/AS1 para. 9.1.10.8 - pairs of 75mm x 3.15mm galv. JH nails or 8g x 65mm s/s screws, through reveals into framing at max 150mm from corners and at 450mm centres along sill
- 3/ Cavity Battens are Horizontal Castellated timber battens (HTLBH20) and plain vertical battens (HTLBV20), temporarily fixed with cladding nails
- 4/ Cladding Fixings are not currently covered by E2/AS1. Approx 20mm has been added to the E2/AS1 dimensions for Direct Fixed



Ph: 03 544 6006
 Email: sales@htlgroup.co.nz
 Website: www.htlgroup.co.nz
 48 Beach Road, Richmond, Nelson 7020
 P O Box 3050, Richmond, Nelson 7050

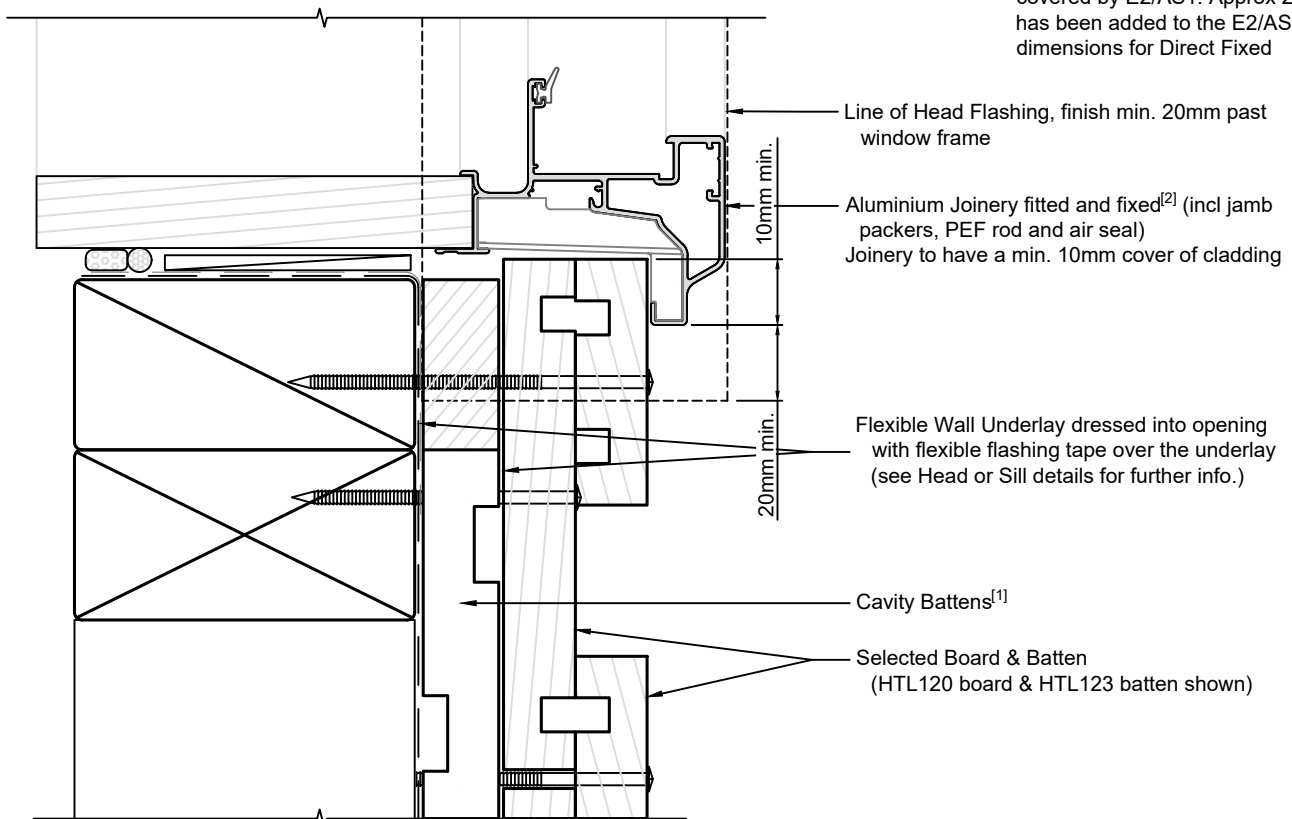
Board and Batten
20mm Cavity Batten - Flexible Underlay
Door Sill detail

1:2 @ A4 2021/01/26

Drawing No.
 2-4-501

Note:

- 1/ Cavity Battens are Horizontal Castellated timber battens (HTLBH20) and plain vertical battens (HTLBV20), temporarily fixed with cladding nails
- 2/ Joinery Fixing to comply with E2/AS1 para. 9.1.10.8 - pairs of 75mm x 3.15mm galv. JH nails or 8g x 65mm s/s screws, through reveals into framing at max 150mm from corners and at 450mm centres along jamb
- 3/ To comply similar to E2/AS1, Fig. 84. Alternatively EITHER 1) If recess in boards occurs at window, fit closure piece OR 2) Depending on board layout, scribes or facing boards may be appropriate
- 4/ Cladding Fixings are not currently covered by E2/AS1. Approx 20mm has been added to the E2/AS1 dimensions for Direct Fixed



Ph: 03 544 6006
 Email: sales@htlgroup.co.nz
 Website: www.htlgroup.co.nz
 48 Beach Road, Richmond, Nelson 7020
 P O Box 3050, Richmond, Nelson 7050

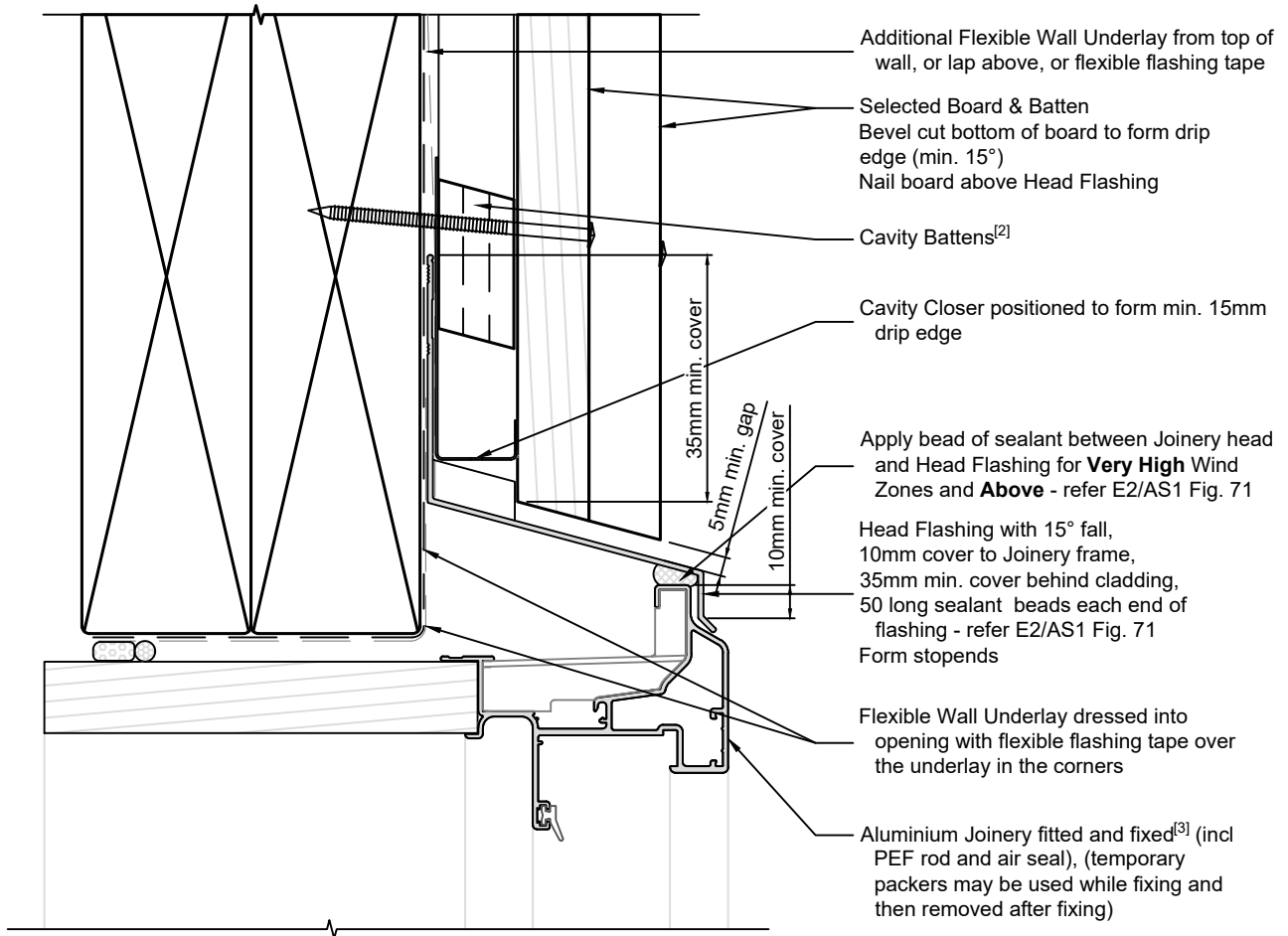
Board and Batten
20mm Cavity Batten - Flexible Underlay
Door Jamb detail

1:2 @ A4 2021/01/26

Drawing No.
 2-4-502

Note:

- 1/ To comply similar to E2/AS1, Fig. 84
- 2/ Cavity Battens are Horizontal Castellated timber battens (HTLBH20) and plain vertical battens (HTLBV20), temporarily fixed with cladding nails
- 3/ Joinery Fixing to comply with E2/AS1 para. 9.1.10.8 - pairs of 75mm x 3.15mm galv. JH nails or 8g x 65mm s/s screws, through reveals into framing at max 150mm from corners and at 450mm centres along head
- 4/ Cladding Fixings are not currently covered by E2/AS1. Approx 20mm has been added to the E2/AS1 dimensions for Direct Fixed



Ph: 03 544 6006
 Email: sales@htlgroup.co.nz
 Website: www.htlgroup.co.nz
 48 Beach Road, Richmond, Nelson 7020
 P O Box 3050, Richmond, Nelson 7050

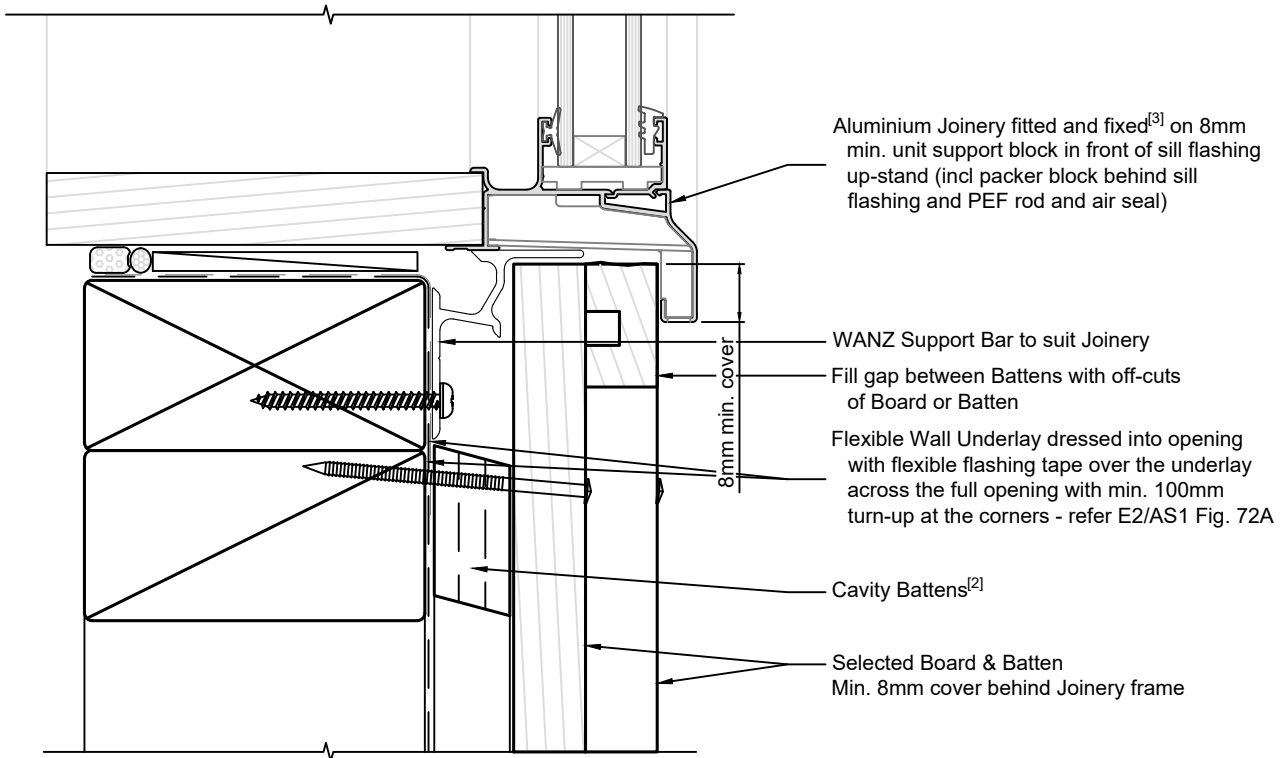
Board and Batten
20mm Cavity Batten - Flexible Underlay
Door Head detail

1:2 @ A4 2021/01/26

Drawing No.
 2-4-503

Note:

- 1/ To comply similar to E2/AS1, Fig. 84
- 2/ Cavity Battens are Horizontal Castellated timber battens (HTLBH20) and plain vertical battens (HTLBV20), temporarily fixed with cladding nails
- 3/ Joinery Fixing to comply with E2/AS1 para. 9.1.10.8 - pairs of 75mm x 3.15mm galv. JH nails or 8g x 65mm s/s screws, through reveals into framing at max 150mm from corners and at 450mm centres along sill
- 4/ Cladding Fixings are not currently covered by E2/AS1. Approx 20mm has been added to the E2/AS1 dimensions for Direct Fixed



Ph: 03 544 6006
Email: sales@htlgroup.co.nz
Website: www.htlgroup.co.nz
48 Beach Road, Richmond, Nelson 7020
P O Box 3050, Richmond, Nelson 7050

Board and Batten
20mm Cavity Batten - Flexible Underlay
Window Sill detail

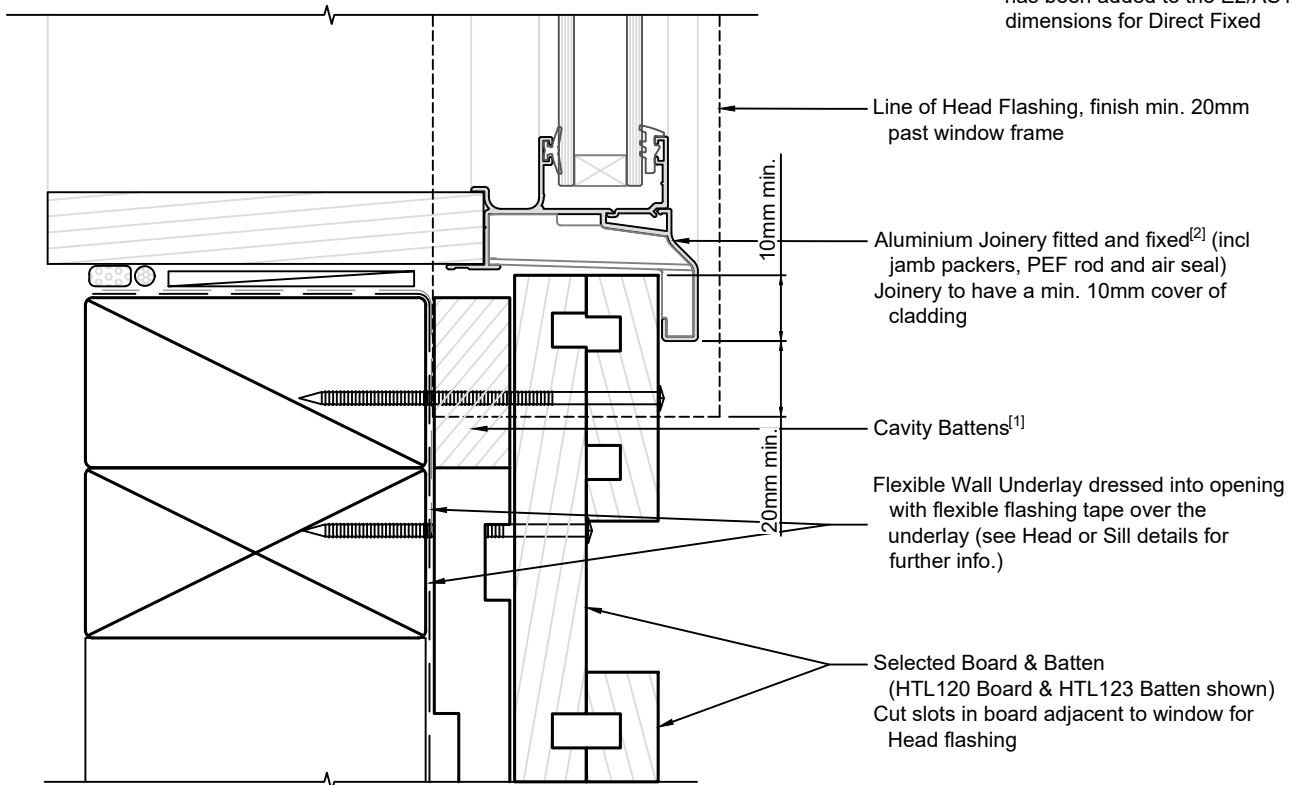
1:2 @ A4

2021/01/26

Drawing No.
2-4-601

Note:

- 1/ Cavity Battens are Horizontal Castellated timber battens (HTLBH20) and plain vertical battens (HTLBV20), temporarily fixed with cladding nails
- 2/ Joinery Fixing to comply with E2/AS1 para. 9.1.10.8 - pairs of 75mm x 3.15mm galv. JH nails or 8g x 65mm s/s screws, through reveals into framing at max 150mm from corners and at 450mm centres along sill
- 3/ To comply similar to E2/AS1 Fig.83. Alternatively EITHER 1) If recess in boards occurs at window, fit closure piece OR 2) Depending on board layout, scribes or facing boards may be appropriate
- 4/ Cladding Fixings are not currently covered by E2/AS1. Approx 20mm has been added to the E2/AS1 dimensions for Direct Fixed



Ph: 03 544 6006
 Email: sales@htlgroup.co.nz
 Website: www.htlgroup.co.nz
 48 Beach Road, Richmond, Nelson 7020
 P O Box 3050, Richmond, Nelson 7050

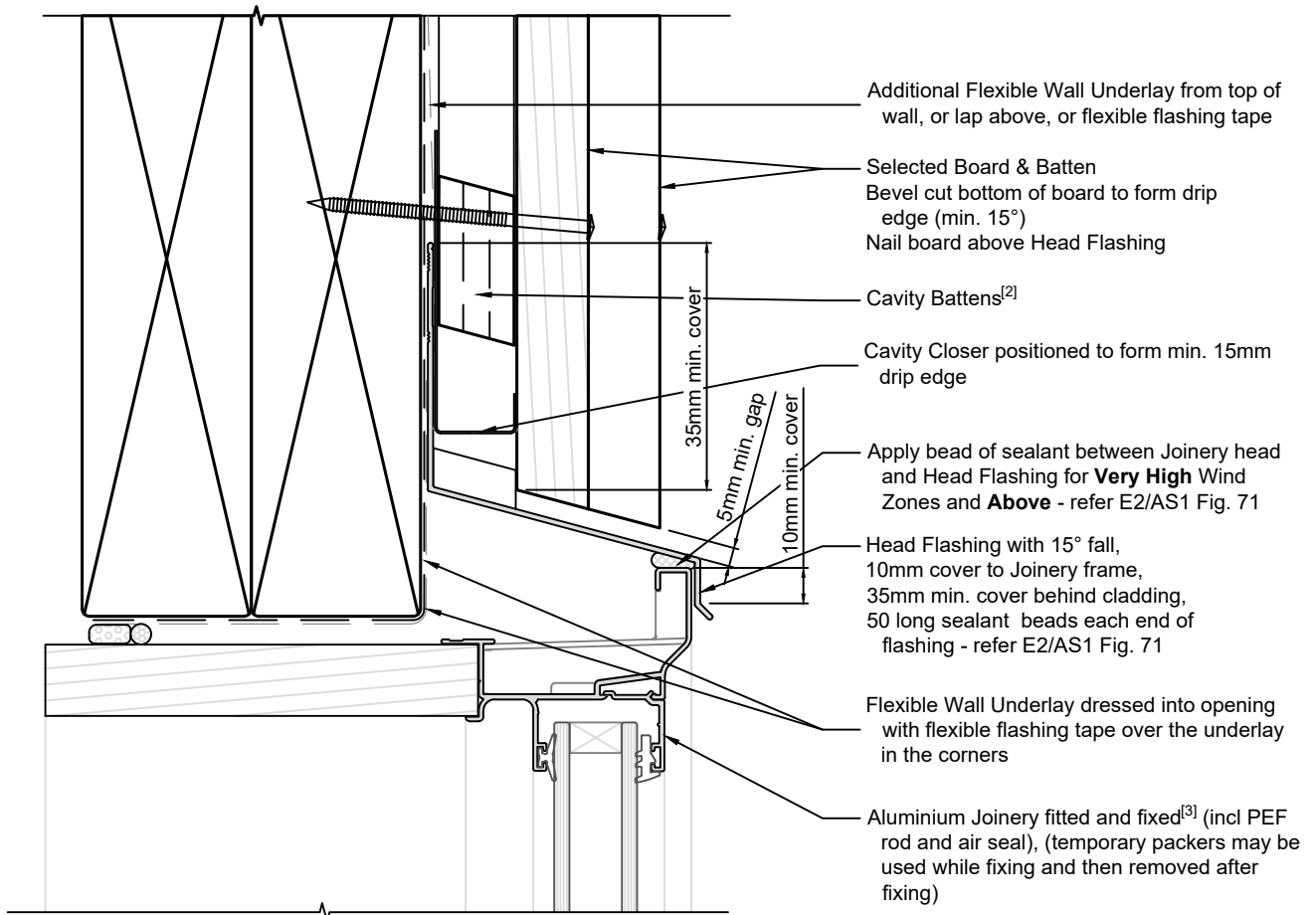
Board and Batten
20mm Cavity Batten - Flexible Underlay
Window Jamb detail

1:2 @ A4 2021/01/26

Drawing No.
 2-4-602

Note:

- 1/ To comply similar to E2/AS1, Fig. 84
- 2/ Cavity Battens are Horizontal Castellated timber battens (HTLBH20) and plain vertical battens (HTLBV20), temporarily fixed with cladding nails
- 3/ Joinery Fixing to comply with E2/AS1 para. 9.1.10.8 - pairs of 75mm x 3.15mm galv. JH nails or 8g x 65mm s/s screws, through reveals into framing at max 150mm from corners and at 450mm centres along sill
- 4/ Cladding Fixings are not currently covered by E2/AS1. Approx 20mm has been added to the E2/AS1 dimensions for Direct Fixed



Ph: 03 544 6006
 Email: sales@htlgroup.co.nz
 Website: www.htlgroup.co.nz
 48 Beach Road, Richmond, Nelson 7020
 P O Box 3050, Richmond, Nelson 7050

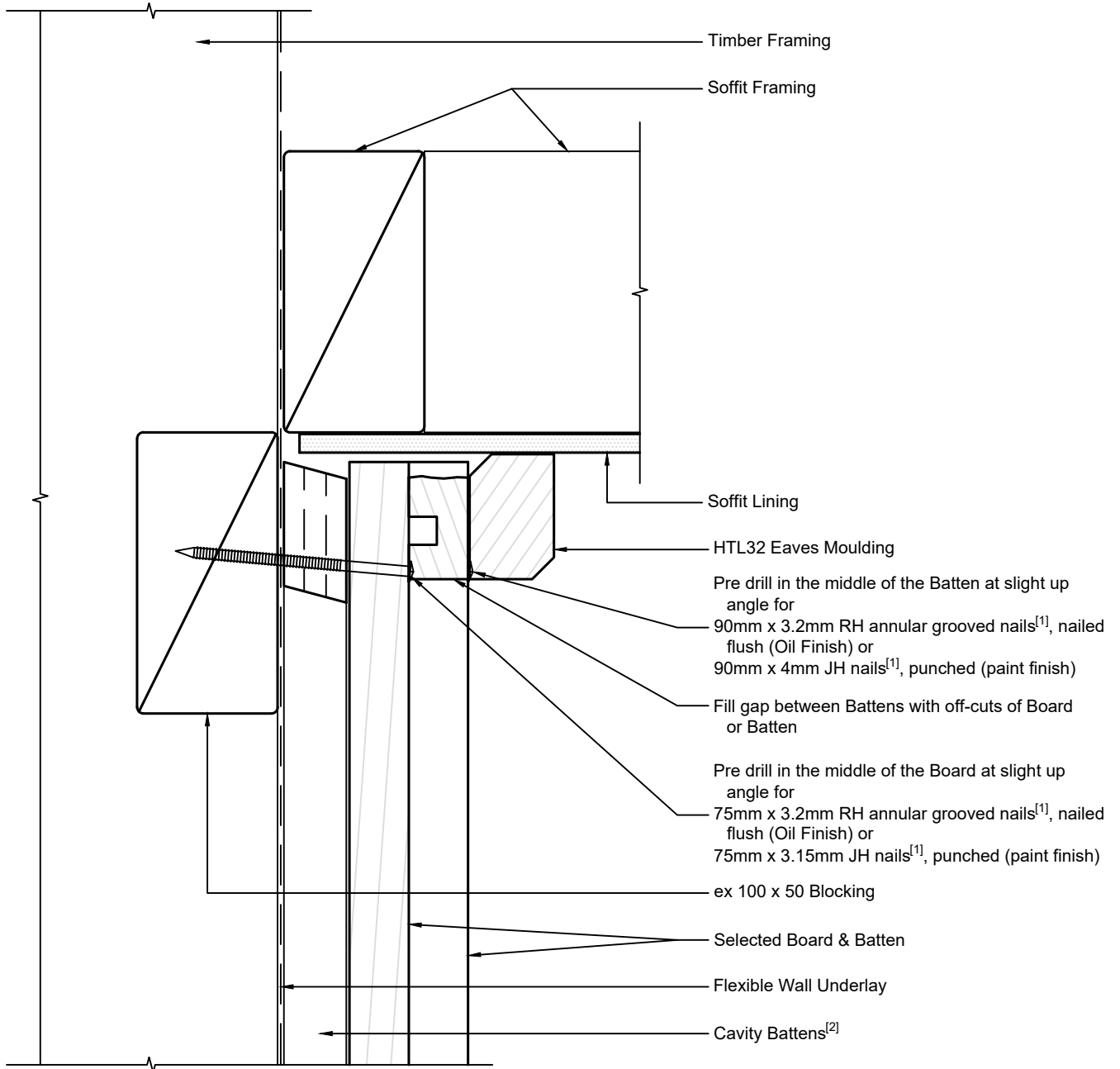
Board and Batten
20mm Cavity Batten - Flexible Underlay
Window Head detail

1:2 @ A4 2021/01/26

Drawing No.
 2-4-603

Note:

- 1/ Cladding Fixings are not currently covered by E2/AS1. Approx 20mm has been added to the E2/AS1 dimensions for Direct Fixed
- 2/ Cavity Battens are Horizontal Castellated timber battens (HTLBH20) and plain vertical battens (HTLBV20), temporarily fixed with cladding nails



Ph: 03 544 6006
 Email: sales@htlgroup.co.nz
 Website: www.htlgroup.co.nz
 48 Beach Road, Richmond, Nelson 7020
 P O Box 3050, Richmond, Nelson 7050

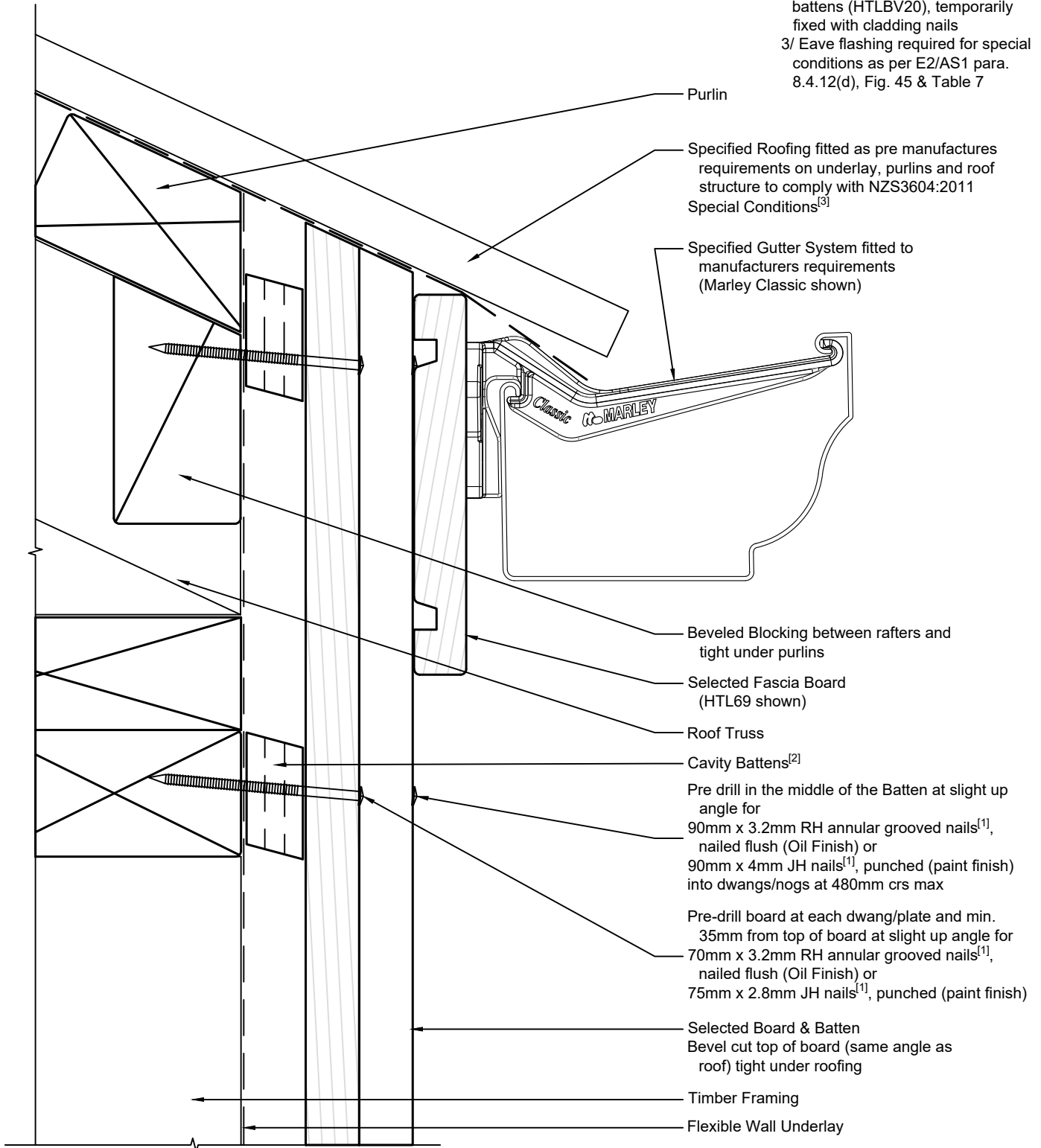
Board and Batten
20mm Cavity Batten - Flexible Underlay
Soffit detail

1:2 @ A4 2021/01/26

Drawing No.
 2-4-801

Note:

- 1/ Cladding Fixings are not currently covered by E2/AS1. Approx 20mm has been added to the E2/AS1 dimensions for Direct Fixed
- 2/ Cavity Battens are Horizontal Castellated timber battens (HTLBH20) and plain vertical battens (HTLBV20), temporarily fixed with cladding nails
- 3/ Eave flashing required for special conditions as per E2/AS1 para. 8.4.12(d), Fig. 45 & Table 7



Purlin

Specified Roofing fitted as pre manufactures requirements on underlay, purlins and roof structure to comply with NZS3604:2011 Special Conditions^[3]

Specified Gutter System fitted to manufacturers requirements (Marley Classic shown)

Beveled Blocking between rafters and tight under purlins

Selected Fascia Board (HTL69 shown)

Roof Truss

Cavity Battens^[2]

Pre drill in the middle of the Batten at slight up angle for
 90mm x 3.2mm RH annular grooved nails^[1], nailed flush (Oil Finish) or
 90mm x 4mm JH nails^[1], punched (paint finish) into dwangs/nogs at 480mm crs max

Pre-drill board at each dwang/plate and min. 35mm from top of board at slight up angle for
 70mm x 3.2mm RH annular grooved nails^[1], nailed flush (Oil Finish) or
 75mm x 2.8mm JH nails^[1], punched (paint finish)

Selected Board & Batten
 Bevel cut top of board (same angle as roof) tight under roofing

Timber Framing

Flexible Wall Underlay



Ph: 03 544 6006
 Email: sales@htlgroup.co.nz
 Website: www.htlgroup.co.nz
 48 Beach Road, Richmond, Nelson 7020
 P O Box 3050, Richmond, Nelson 7050

Board and Batten
20mm Cavity Batten - Flexible Underlay
Flush Eave detail

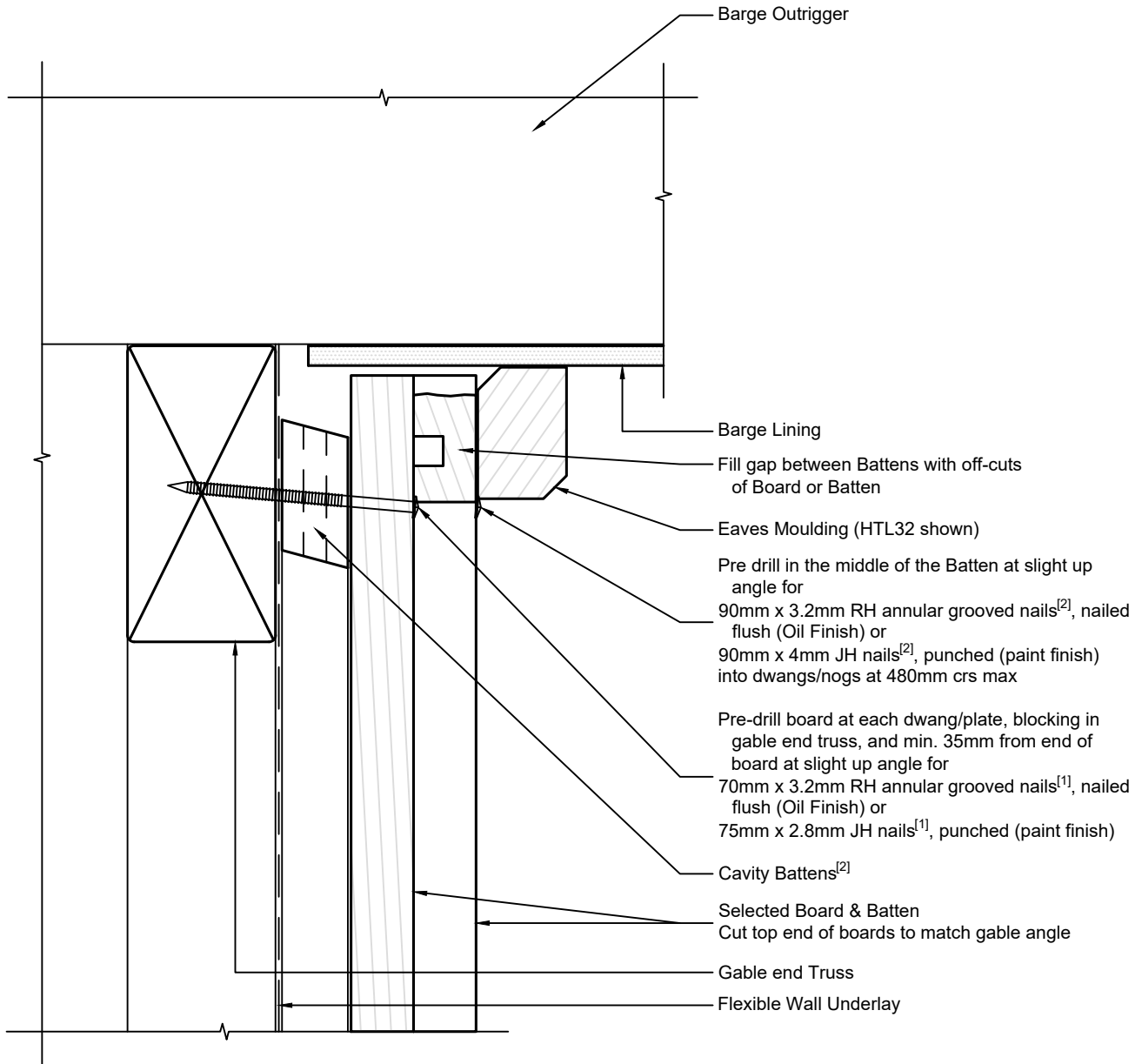
1:2 @ A4

2021/01/26

Drawing No.
 2-4-802

Note:

- 1/ Cladding Fixings are not currently covered by E2/AS1. Approx 20mm has been added to the E2/AS1 dimensions for Direct Fixed
- 2/ Cavity Battens are Horizontal Castellated timber battens (HTLBH20) and plain vertical battens (HTLBV20), temporarily fixed with cladding nails



Ph: 03 544 6006
Email: sales@htlgroup.co.nz
Website: www.htlgroup.co.nz
48 Beach Road, Richmond, Nelson 7020
P O Box 3050, Richmond, Nelson 7050

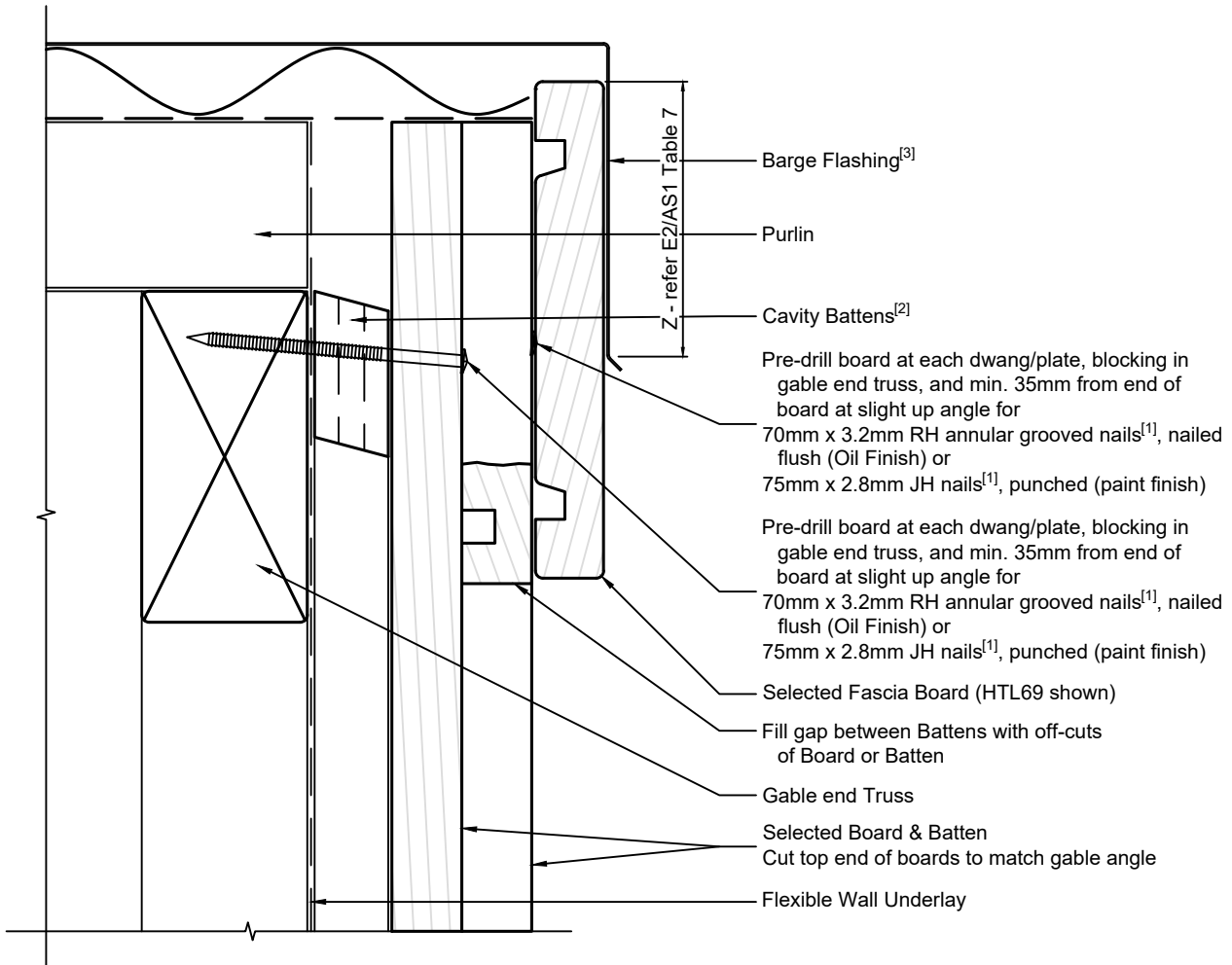
Board and Batten
20mm Cavity Batten - Flexible Underlay
Barge Soffit detail

1:2 @ A4 2021/01/26

Drawing No.
2-4-851

Note:

- 1/ Cladding Fixings are not currently covered by E2/AS1. Approx 20mm has been added to the E2/AS1 dimensions for Direct Fixed
- 2/ Cavity Battens are Horizontal Castellated timber battens (HTLBH20) and plain vertical battens (HTLBV20), temporarily fixed with cladding nails
- 3/ Barge Flashing to comply with E2/AS1 para. 8.4.12(f), Fig. 47 & Table 7



Ph: 03 544 6006
 Email: sales@htlgroup.co.nz
 Website: www.htlgroup.co.nz
 48 Beach Road, Richmond, Nelson 7020
 P O Box 3050, Richmond, Nelson 7050

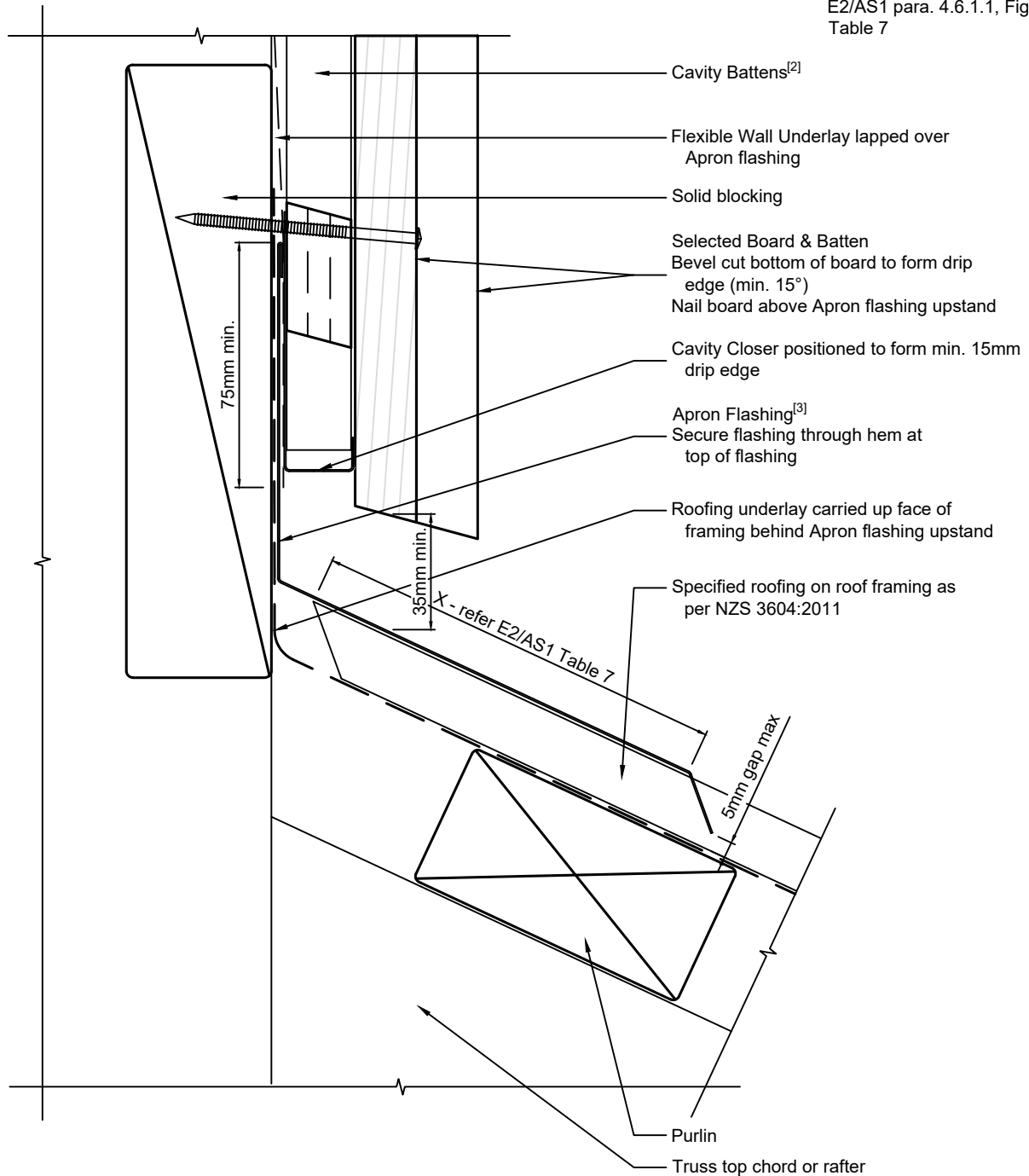
Board and Batten
20mm Cavity Batten - Flexible Underlay
Flush Barge detail

1:2 @ A4 2021/01/26

Drawing No.
 2-4-852

Note:

- 1/ Cladding Fixings are not currently covered by E2/AS1. Approx 20mm has been added to the E2/AS1 dimensions for Direct Fixed
- 2/ Cavity Battens are Horizontal Castellated timber battens (HTLBH20) and plain vertical battens (HTLBV20), temporarily fixed with cladding nails
- 3/ Apron Flashing to comply with E2/AS1 para. 4.6.1.1, Fig. 7 & Table 7



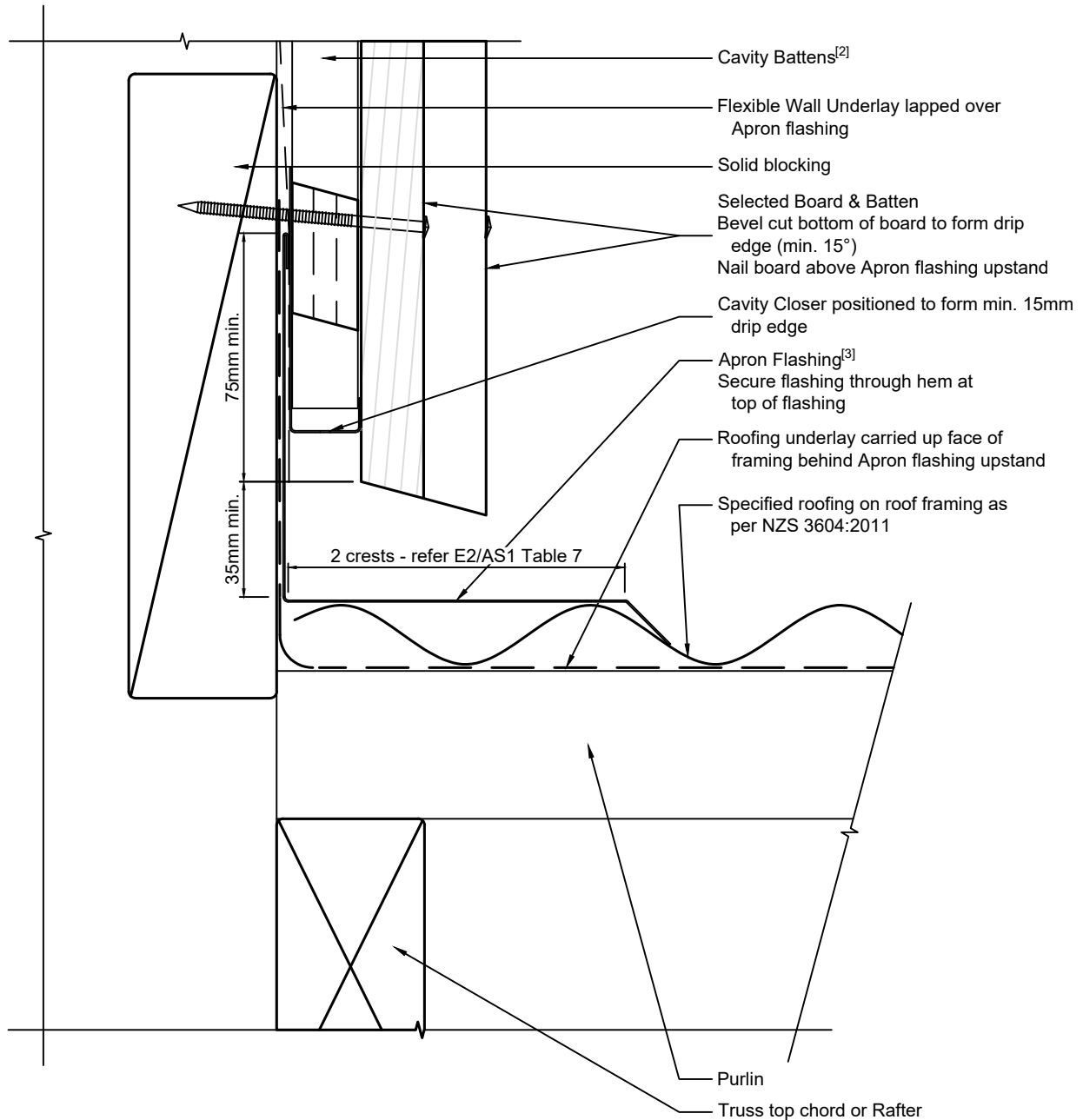
Ph: 03 544 6006
 Email: sales@htlgroup.co.nz
 Website: www.htlgroup.co.nz
 48 Beach Road, Richmond, Nelson 7020
 P O Box 3050, Richmond, Nelson 7050

Board and Batten
20mm Cavity Batten - Flexible Underlay
Wall to Roof detail
Top of Roof

| | |
|------------------------|------------|
| 1:2 @ A4 | 2021/01/26 |
| Drawing No. 2-4-901 | |

Note:

- 1/ Cladding Fixings are not currently covered by E2/AS1. Approx 20mm has been added to the E2/AS1 dimensions for Direct Fixed
- 2/ Cavity Battens are Horizontal Castellated timber battens (HTLBH20) and plain vertical battens (HTLBV20), temporarily fixed with cladding nails
- 3/ Apron Flashing to comply with E2/AS1 para. 4.6.1.1, Fig. 7 & Table 7

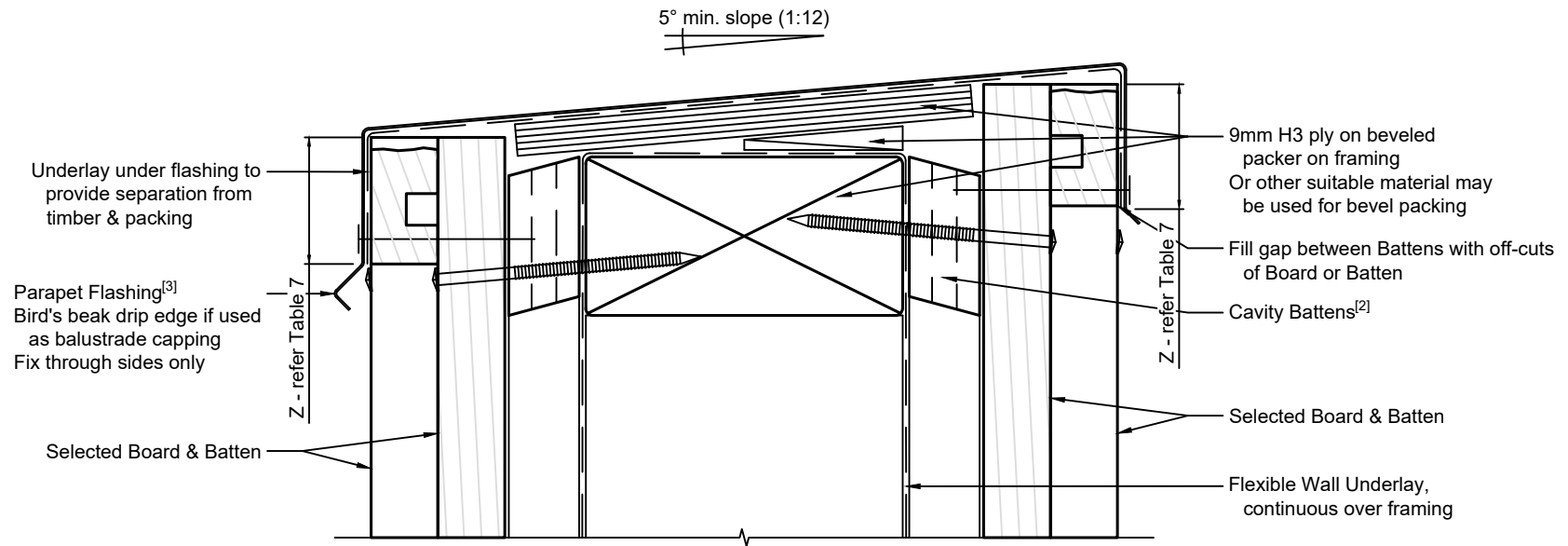


Ph: 03 544 6006
 Email: sales@htlgroup.co.nz
 Website: www.htlgroup.co.nz
 48 Beach Road, Richmond, Nelson 7020
 P O Box 3050, Richmond, Nelson 7050

Board and Batten
20mm Cavity Batten - Flexible Underlay
Wall to Roof detail
Side of Roof

| | |
|---------------------|------------|
| 1:2 @ A4 | 2021/01/26 |
| Drawing No. 2-4-902 | |

- Note:**
- 1/ Cladding Fixings are not currently covered by E2/AS1. Approx 20mm has been added to the E2/AS1 dimensions for Direct Fixed
 - 2/ Cavity Battens are Horizontal Castelled timber battens (HTLBH20) and plain vertical battens (HTLBV20), temporarily fixed with cladding nails
 - 3/ Parapet Flashing to comply with E2/AS1 para. 6.0, Fig. 10 & Table 7



Ph: 03 544 6006
 Email: sales@htlgroup.co.nz
 Website: www.htlgroup.co.nz
 48 Beach Road, Richmond, Nelson 7020
 P O Box 3050, Richmond, Nelson 7050

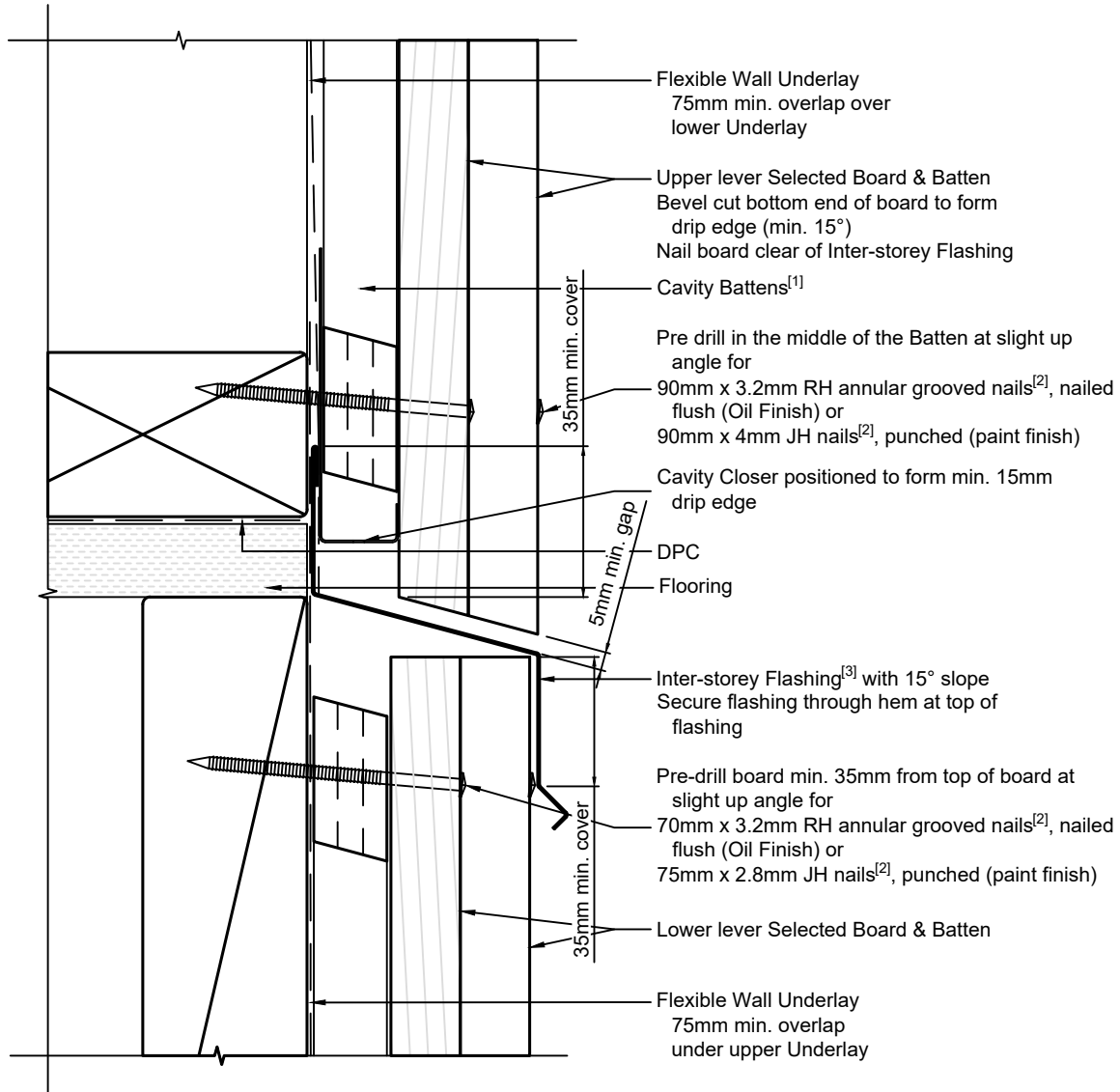
Board and Batten
20mm Cavity Batten - Flexible Underlay
Parapet detail

1:2 @ A4 2021/01/26

Drawing No.
 2-4-911

Note:

- 1/ Cavity Battens are Horizontal Castellated timber battens (HTLBH20) and plain vertical battens (HTLBV20), temporarily fixed with cladding nails
- 2/ Cladding Fixings are not currently covered by E2/AS1. Approx 20mm has been added to the E2/AS1 dimensions for Direct Fixed
- 3/ Inter-storey Flashing to comply with E2/AS1 para. 9.1.9.4. & Fig. 70 or to suit common length of cladding, mitre at corners or form stop-ends as needed



Note: For use on walls over 2 storeys or 7 meters



Ph: 03 544 6006
 Email: sales@htlgroup.co.nz
 Website: www.htlgroup.co.nz
 48 Beach Road, Richmond, Nelson 7020
 P O Box 3050, Richmond, Nelson 7050

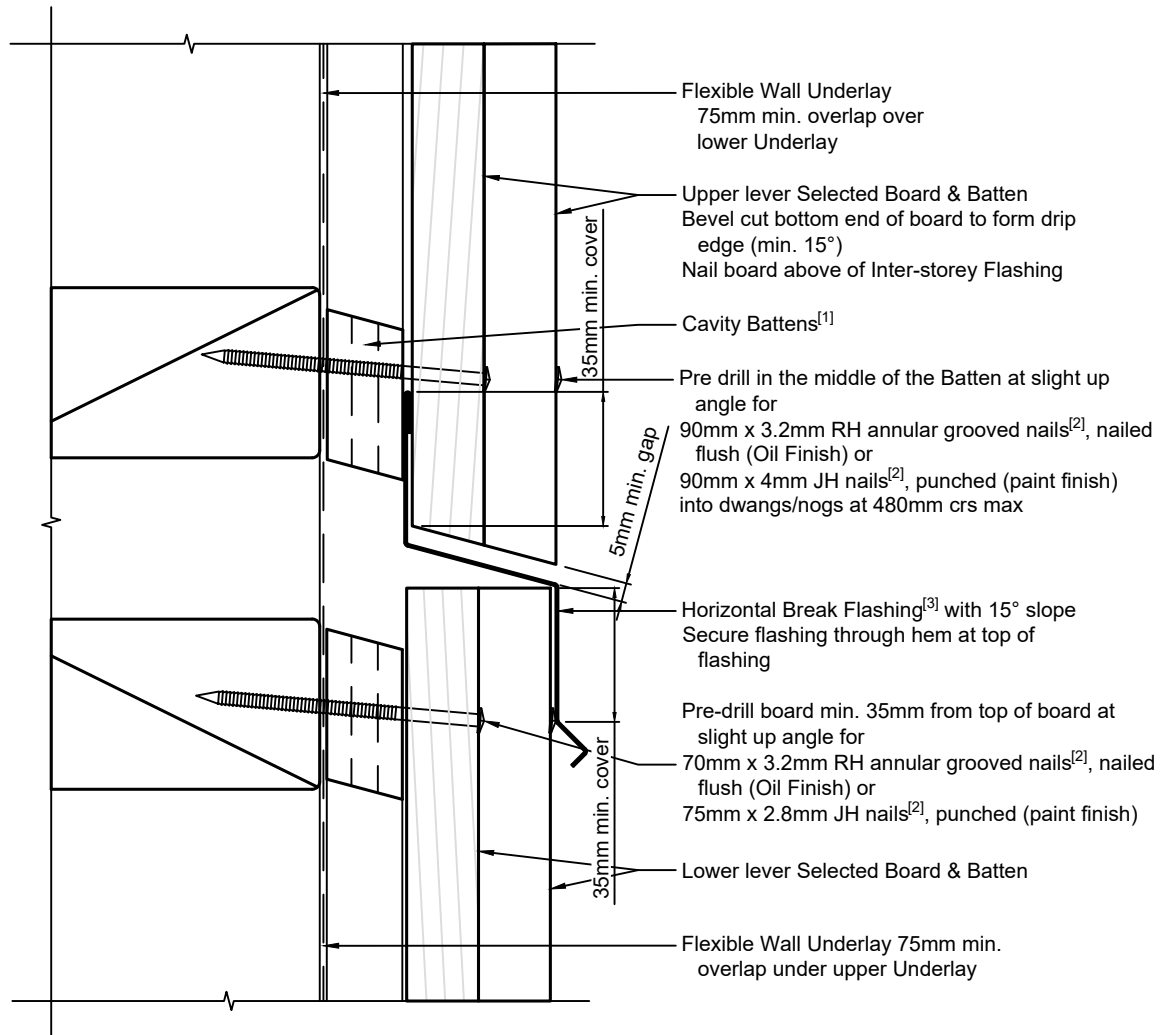
Board and Batten
20mm Cavity Batten - Flexible Underlay
Inter-storey Break detail

1:2 @ A4 2021/01/26

Drawing No.
 2-4-951

Note:

- 1/ Cavity Battens are Horizontal Castellated timber battens (HTLBH20) and plain vertical battens (HTLBV20), temporarily fixed with cladding nails
- 2/ Cladding Fixings are not currently covered by E2/AS1. Approx 20mm has been added to the E2/AS1 dimensions for Direct Fixed
- 3/ Horizontal break flashing to comply with E2/AS1 para. 9.1.9.4. & Fig. 70 or to suit common length of cladding, mitre at corners or form stop-ends as needed



Note: For use on walls less than 2 storeys or 7 meters
where a horizontal break is required



Ph: 03 544 6006
Email: sales@htlgroup.co.nz
Website: www.htlgroup.co.nz
48 Beach Road, Richmond, Nelson 7020
P O Box 3050, Richmond, Nelson 7050

Board and Batten
20mm Cavity Batten - Flexible Underlay
Horizontal Break detail

1:2 @ A4

2021/01/26

Drawing No.
2-4-961