



GLASS HARDWARE



# INSTALLATION GUIDE

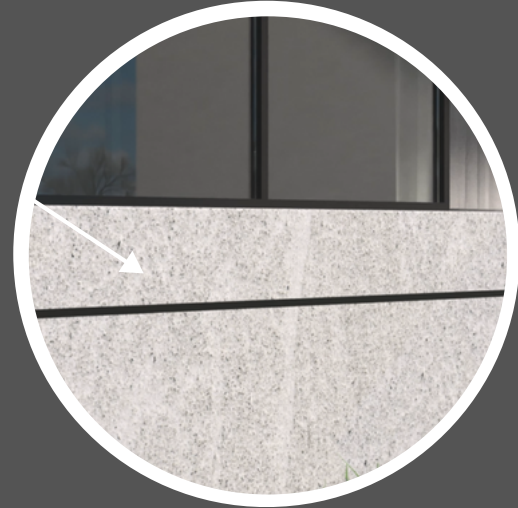
## SL120S Side Fixed

In this short brochure we break down the complete installation process of the Smart-Lock adjustable side fixed channel system

# INSTALLATION PROCESS

**1.**

Mark Centre position of the channel  
and chalk a line



**2.**

Place channel over the chalked line and  
mark all the holes



**3.**

Remove the channel and drill required hole  
size depending on fixing application



**4.**

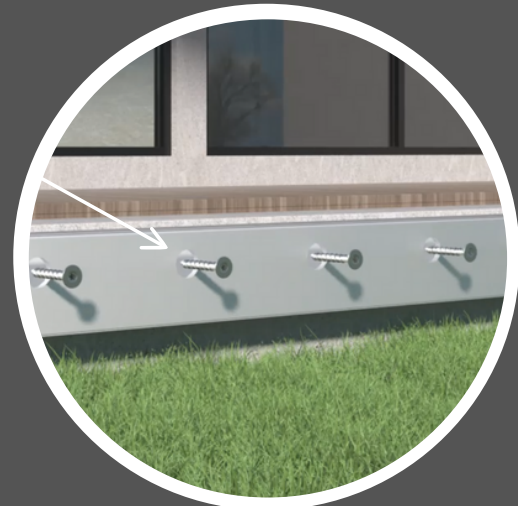
Blow all the dust out of the holes to  
ensure they are clean



# INSTALLATION PROCESS

5.

Place channel into position and install concrete screw anchor's



6.

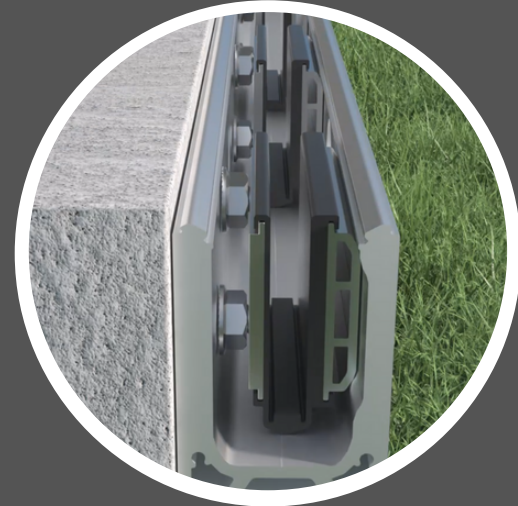
Secure screws using a torque gun



7.

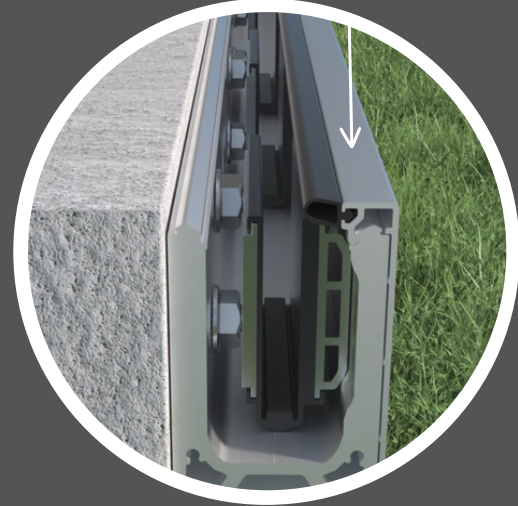
Place all the clamping plates into the channel.

**NOTE:** The number of clamping plates used per panel will determine on the engineering



8.

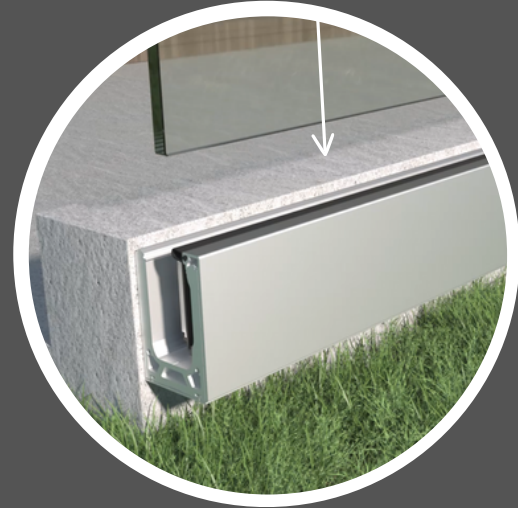
Install the outside cover with pre-glazed rubbers



# INSTALLATION PROCESS

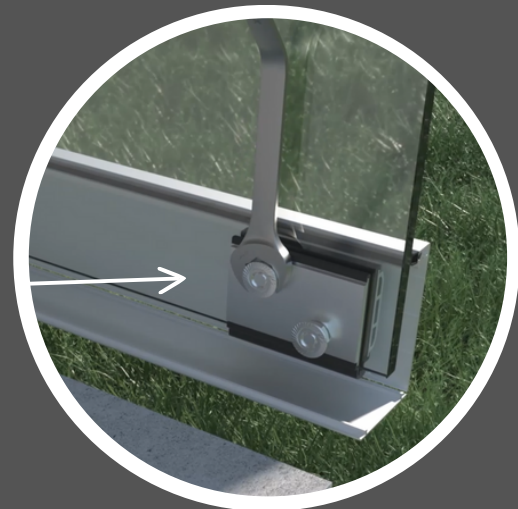
**9.**

Install glass panels into the channel and divide the glass gaps evenly



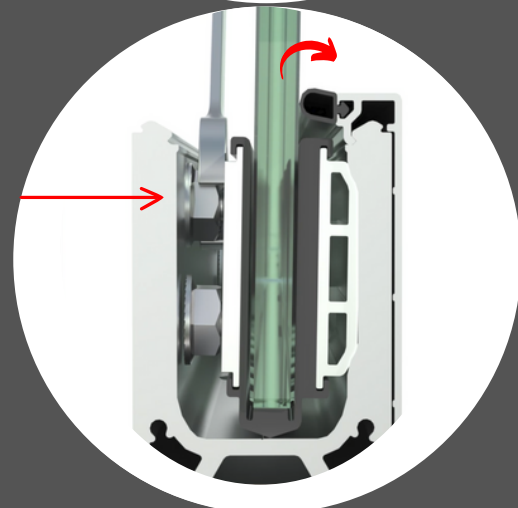
**10.**

Using the ratchet spanner or a standard 19mm spanner wind the nuts out until they touch the side of the channel



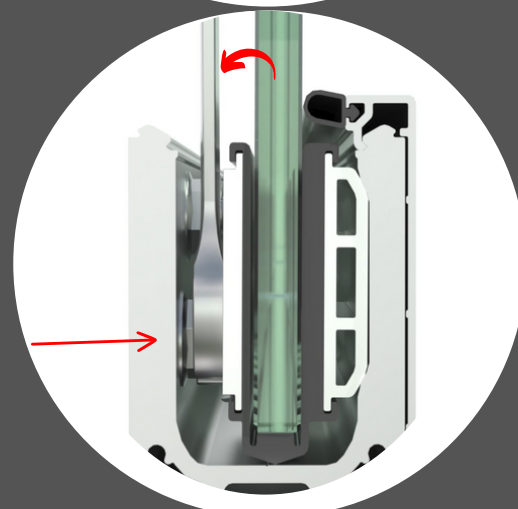
**11.**

Wind out the top nut to tilt the glass forward



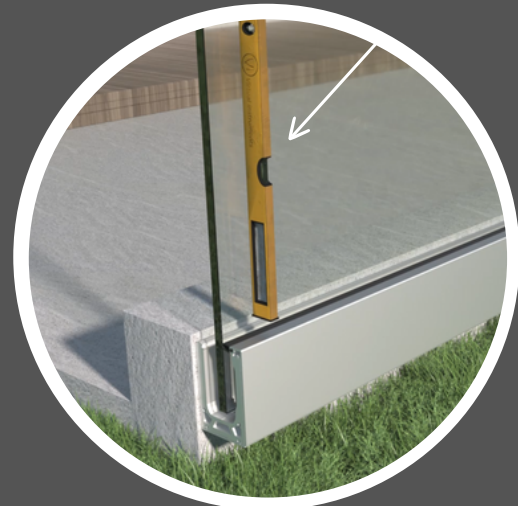
**12.**

Wind out the bottom nut to tilt the glass back.

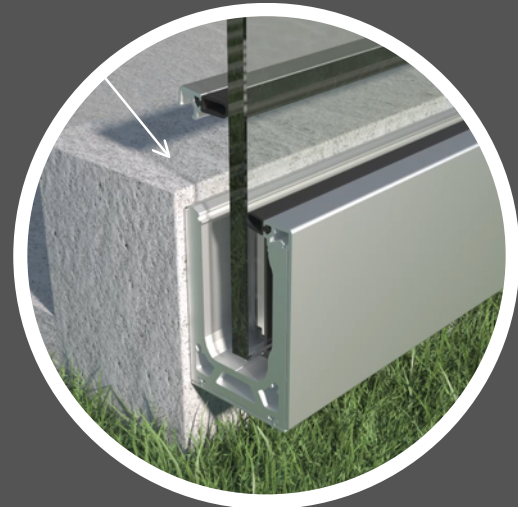


# INSTALLATION PROCESS

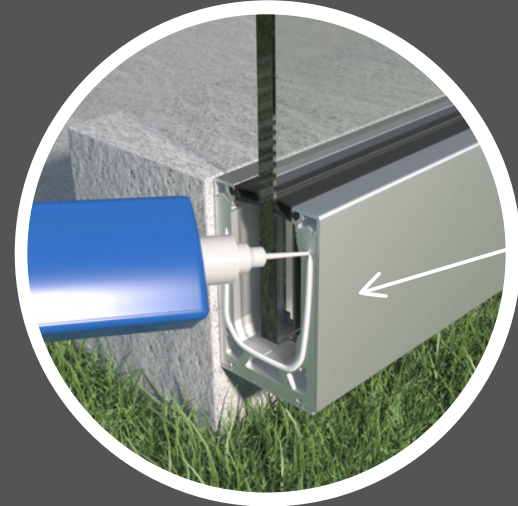
- 13.**  
Using a level check the glass is plumb and make any small adjustments if needed



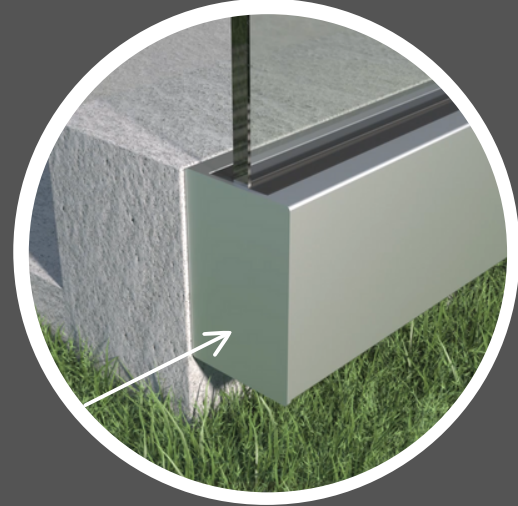
- 14.**  
Install front cover with pre-glazed rubbers. Push cover down with some force until the cover snaps on



- 15.**  
Using silicone or glue place a small bead around the end of the channel

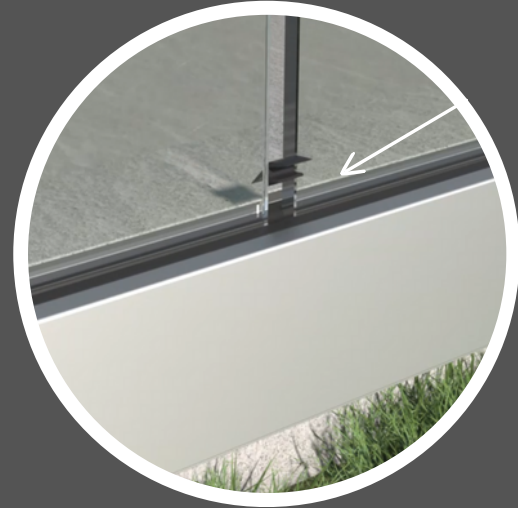


- 16.**  
Push end cap onto the the channel

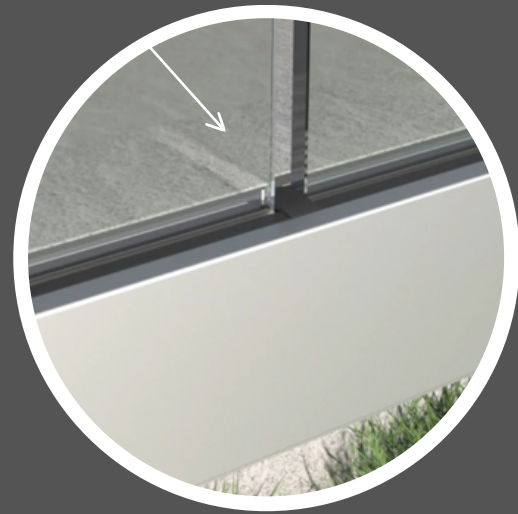


# INSTALLATION PROCESS

- 17.** Cut the gap rubber to match gap sizes on your project and install them in between the rubber on the covers



- 18.** Make sure rubber is sitting correctly like shown



# Finished Product



## SUMMARY

The main key benefits of using our Smart-Lock channel system is it allows you to get a perfect level job every time with very minimal effort

For more information or the complete installation video guide please get in contact with us today.