

Index

Details for - Bevel Back Weatherboards 20mm Cavity Batten - Flexible Underlay

4-4-001	Index
4-4-101	Nail Fixing
4-4-111	Penetrations
4-4-151	Meter Box - Bottom
4-4-152	Meter Box - Side
4-4-153	Meter Box - Head
4-4-211	Bottom of Wall - Timber Floor
4-4-221	Bottom of Wall - Concrete Floor
4-4-301	External Corner - Option A - Boxed Corner
4-4-302	External Corner - Option B or C - Mitred Corner
4-4-351	Internal Corner - Option A
4-4-352	Internal Corner - Option B
4-4-501	Door Sill
4-4-502	Door Jamb
4-4-503	Door Head
4-4-601	Window Sill
4-4-602	Window Jamb
4-4-603	Window Head
4-4-801	Eave Soffit
4-4-802	Flush Eave
4-4-851	Barge Soffit
4-4-852	Flush Barge
4-4-901	Roof to Wall - Top of roofing
4-4-902	Roof to Wall - Side of roofing
4-4-911	Parapet

Notes:

Standards referred to in these Details;

- E2/AS1 External Moisture (Amendment 9 June 2019)
- NZS3604:2011 Timber-framed Buildings

All Details have been 'exploded' for clarity

Aluminium Joinery profiles used in these details are from "Nulook", change these profiles for the profiles of the Joinery company you are using



Ph: 03 544 6006
Email: sales@htlgroup.co.nz
Website: www.htlgroup.co.nz
48 Beach Road, Richmond, Nelson 7020
P O Box 3050, Richmond, Nelson 7050

**Bevel Back Weatherboard
20mm Cavity Batten - Flexible Underlay
Index**

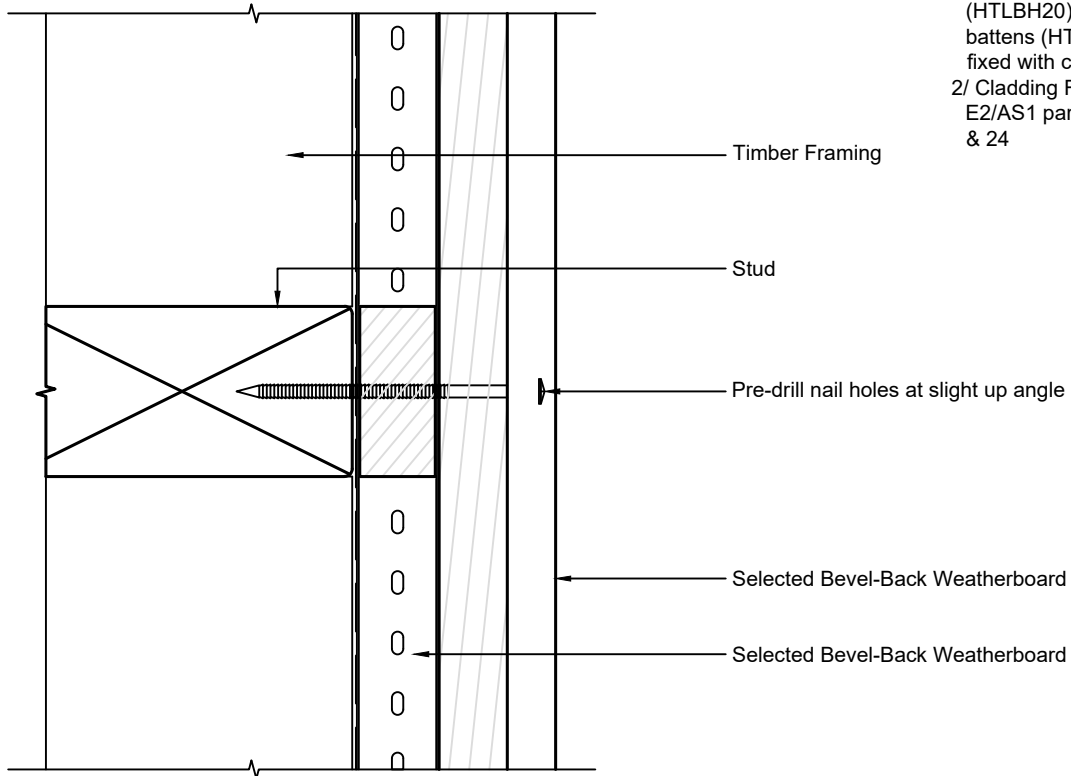
1:2 @ A4

2021/01/26

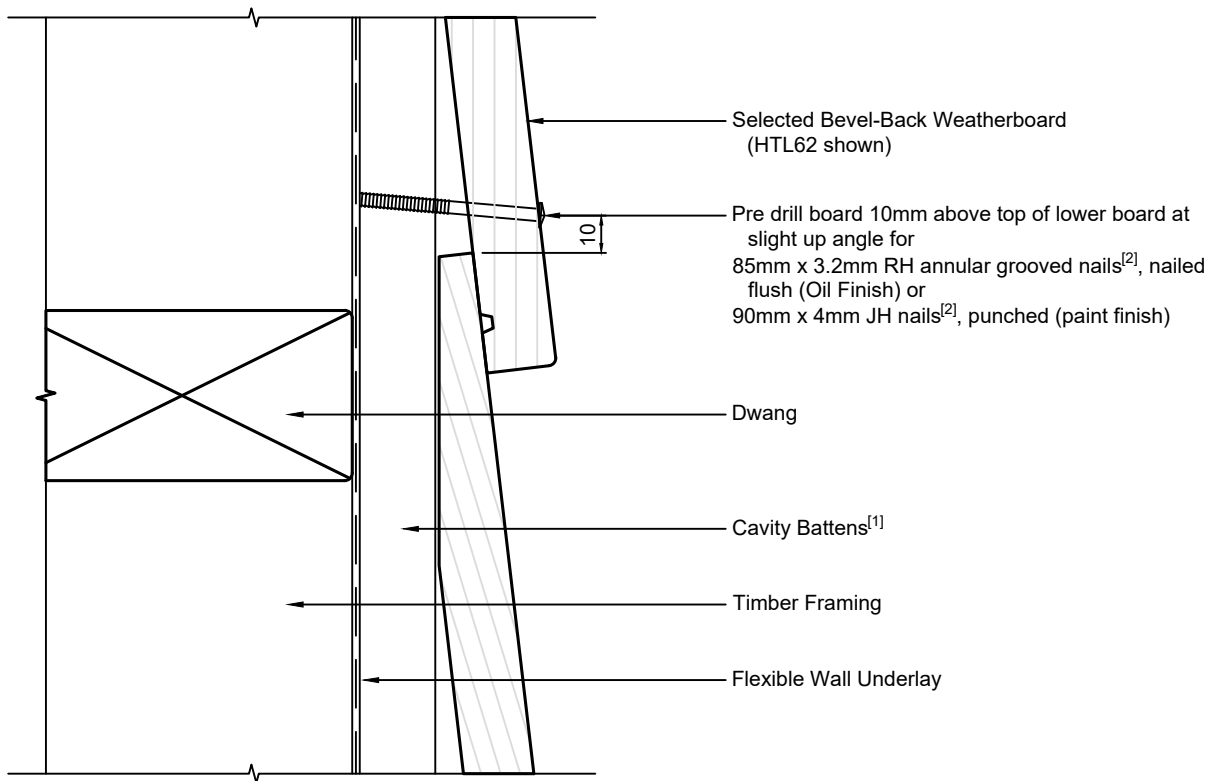
Drawing No.
4-4-001

Note:

- 1/ Cavity Battens are Horizontal Castellated timber battens (HTLBH20) and plain vertical battens (HTLBV20), temporarily fixed with cladding nails
- 2/ Cladding Fixings to comply with E2/AS1 para. 9.4.3.1 & Tables 20 & 24



Horizontal cross section



Vertical cross section



Ph: 03 544 6006
 Email: sales@htlgroup.co.nz
 Website: www.htlgroup.co.nz
 48 Beach Road, Richmond, Nelson 7020
 P O Box 3050, Richmond, Nelson 7050

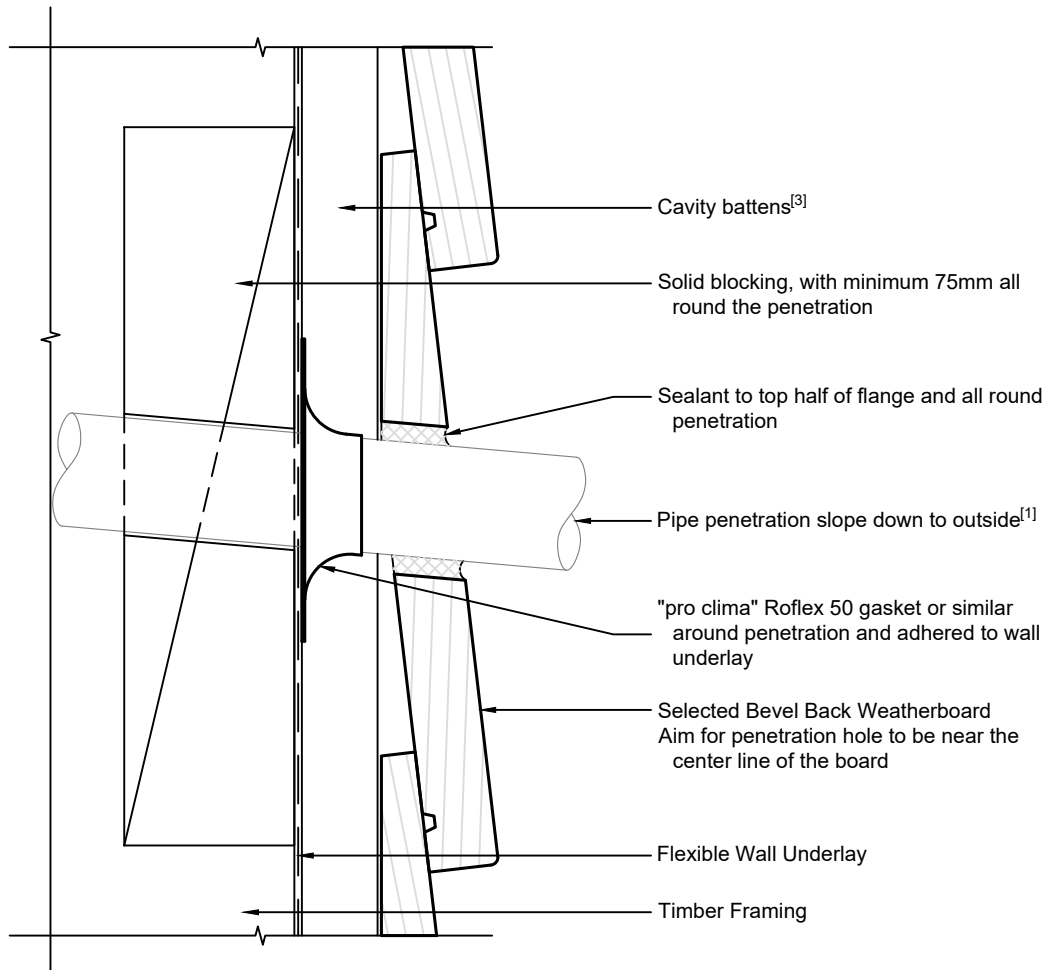
**Bevel Back Weatherboard
 20mm Cavity Batten - Flexible Underlay
 Nail Fixing detail**

1:2 @ A4 2021/01/26

Drawing No.
 4-4-101

Note:

- 1/ Penetration to comply with E2/AS1 para. 9.1.9.3 & Fig. 68
- 2/ Cladding Fixings to comply with E2/AS1 para. 9.4.3.1 & Tables 20 & 24
- 3/ Cavity Battens are Horizontal Castellated timber battens (HTLBH20) and plain vertical battens (HTLBV20), temporarily fixed with cladding nails



Ph: 03 544 6006
Email: sales@htlgroup.co.nz
Website: www.htlgroup.co.nz
48 Beach Road, Richmond, Nelson 7020
P O Box 3050, Richmond, Nelson 7050

**Bevel Back Weatherboard
20mm Cavity Batten - Flexible Underlay
Penetration detail**

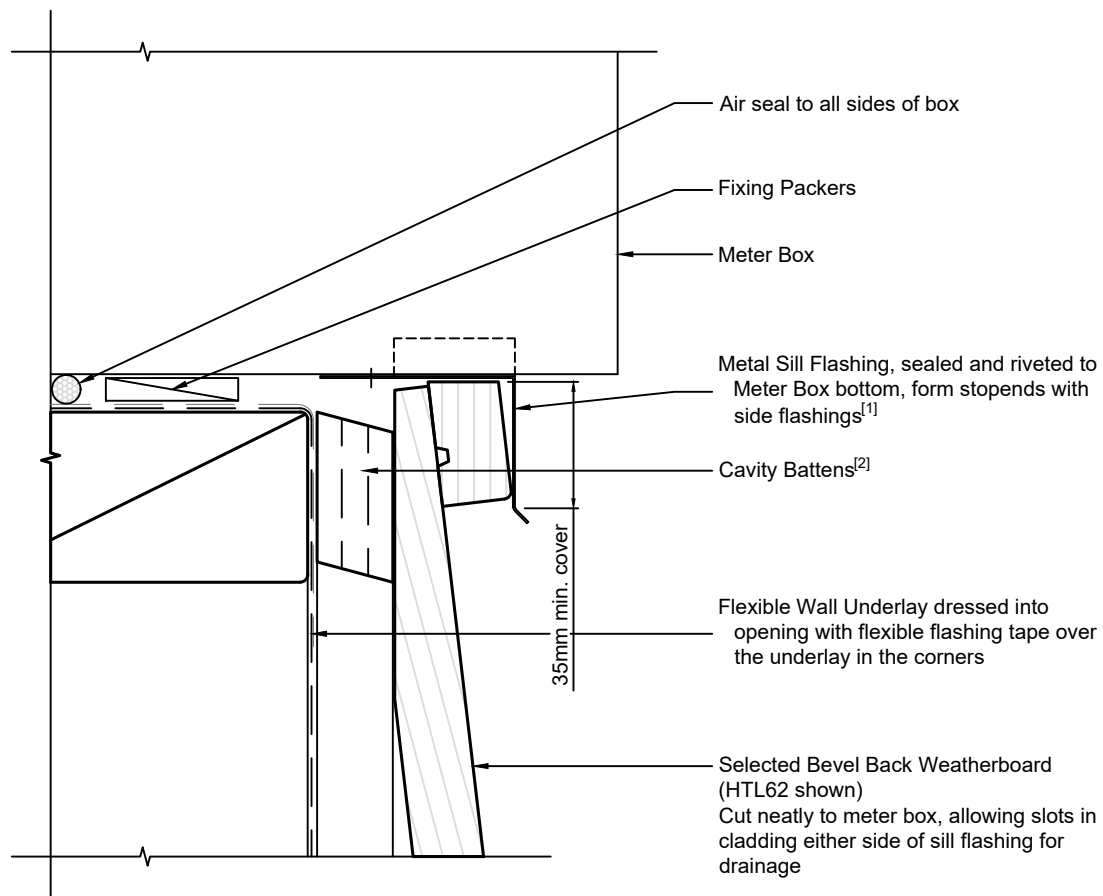
1:2 @ A4

2021/01/26

Drawing No.
4-4-111

Note:

- 1/ To comply with E2/AS1 para. 9.1.9.3 & Fig. 69
- 2/ Cavity Battens are Horizontal Castellated timber battens (HTLBH20) and plain vertical battens (HTLBV20), temporarily fixed with cladding nails
- 3/ Cladding Fixings to comply with E2/AS1 para. 9.4.3.1 & Tables 20 & 24



Ph: 03 544 6006
Email: sales@htlgroup.co.nz
Website: www.htlgroup.co.nz
48 Beach Road, Richmond, Nelson 7020
P O Box 3050, Richmond, Nelson 7050

**Bevel Back Weatherboard
20mm Cavity Batten - Flexible Underlay
Meter Box - Bottom detail**

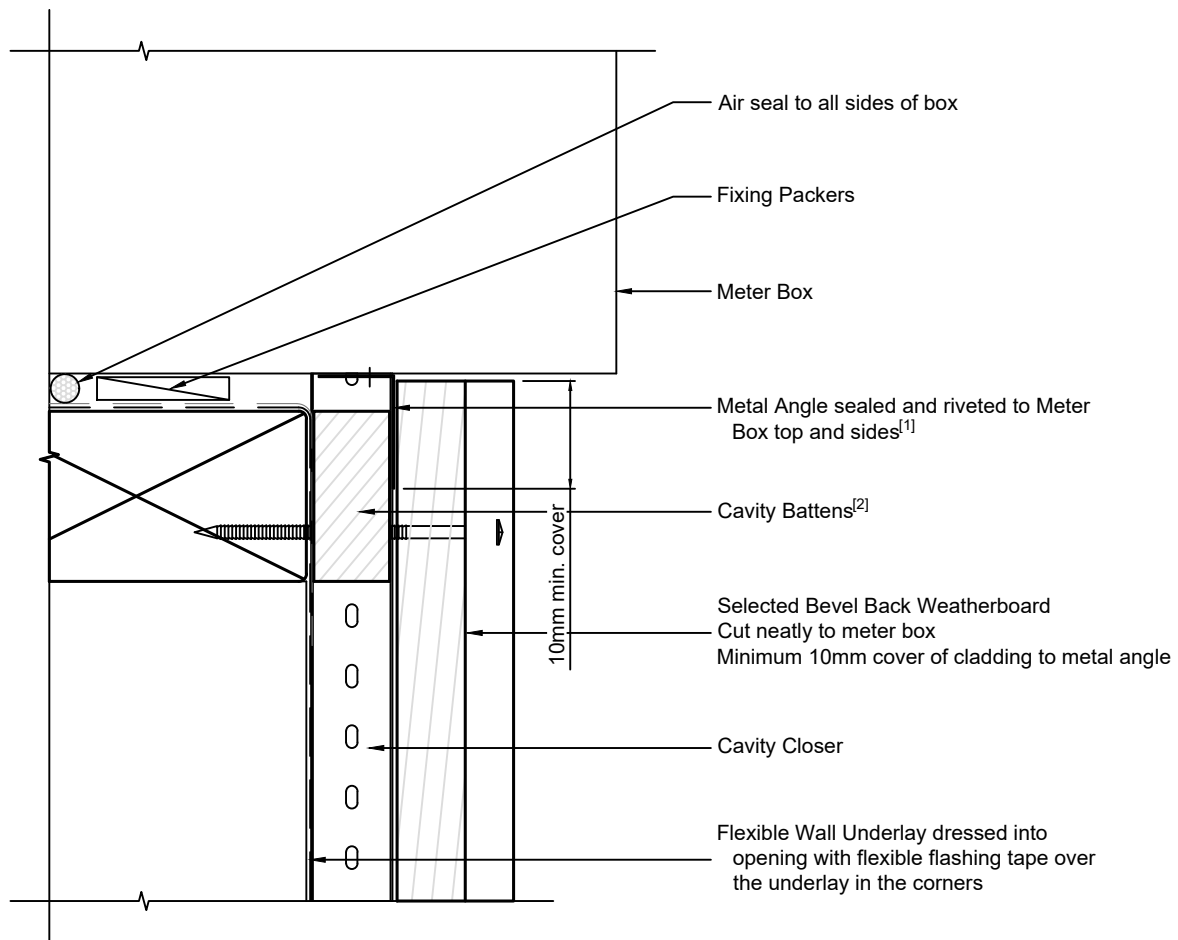
1:2 @ A4

2021/01/26

Drawing No.
4-4-151

Note:

- 1/ To comply with E2/AS1 para. 9.1.9.3
- 2/ Cavity Battens are Horizontal Castellated timber battens (HTLBH20) and plain vertical battens (HTLBV20), temporarily fixed with cladding nails
- 3/ Cladding Fixings to comply with E2/AS1 para. 9.4.3.1 & Tables 20 & 24



Ph: 03 544 6006
Email: sales@htlgroup.co.nz
Website: www.htlgroup.co.nz
48 Beach Road, Richmond, Nelson 7020
P O Box 3050, Richmond, Nelson 7050

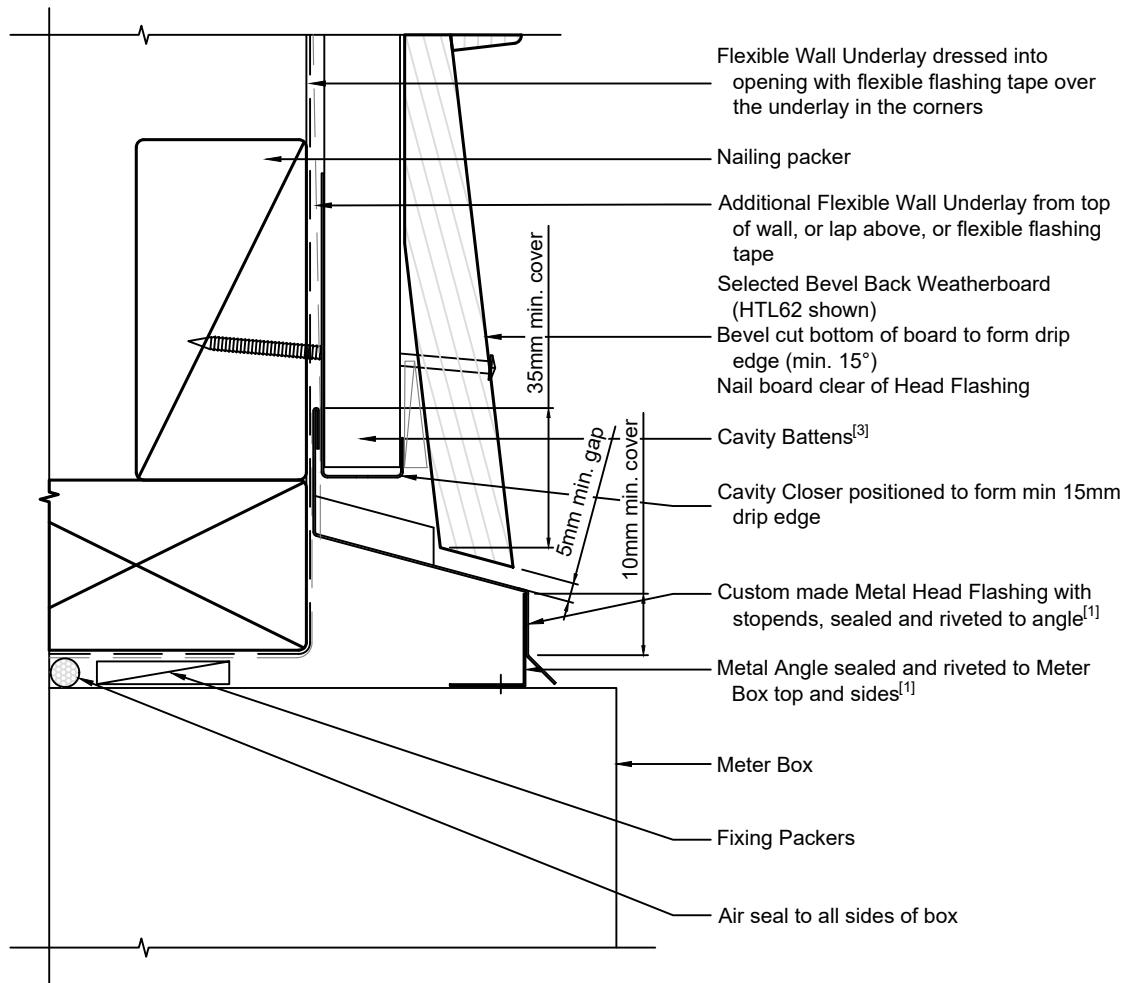
**Bevel Back Weatherboard
20mm Cavity Batten - Flexible Underlay
Meter Box - Side detail**

1:2 @ A4 2021/01/26

Drawing No.
4-4-152

Note:

- 1/ To comply with E2/AS1 para. 9.1.9.3 & Fig. 69
- 2/ Cladding Fixings to comply with E2/AS1 para. 9.4.3.1 & Tables 20 & 24
- 3/ Cavity Battens are Horizontal Castellated timber battens (HTLBH20) and plain vertical battens (HTLBV20), temporarily fixed with cladding nails



Ph: 03 544 6006
 Email: sales@htlgroup.co.nz
 Website: www.htlgroup.co.nz
 48 Beach Road, Richmond, Nelson 7020
 P O Box 3050, Richmond, Nelson 7050

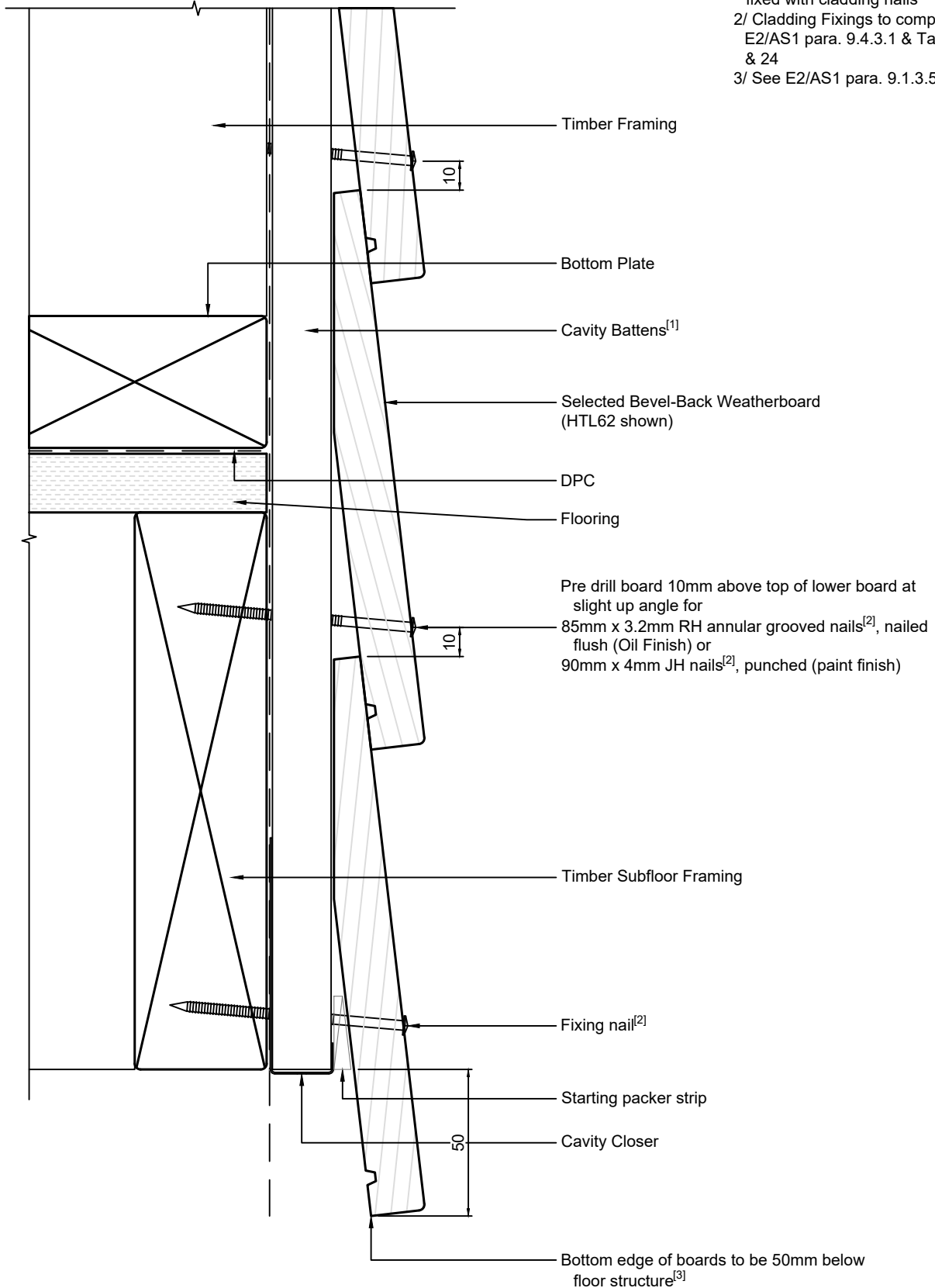
**Bevel Back Weatherboard
 20mm Cavity Batten - Flexible Underlay
 Meter Box - Head detail**

1:2 @ A4 | 2021/01/26

Drawing No.
 4-4-153

Note:

- 1/ Cavity Battens are Horizontal Castellated timber battens (HTLBH20) and plain vertical battens (HTLBV20), temporarily fixed with cladding nails
- 2/ Cladding Fixings to comply with E2/AS1 para. 9.4.3.1 & Tables 20 & 24
- 3/ See E2/AS1 para. 9.1.3.5(a)



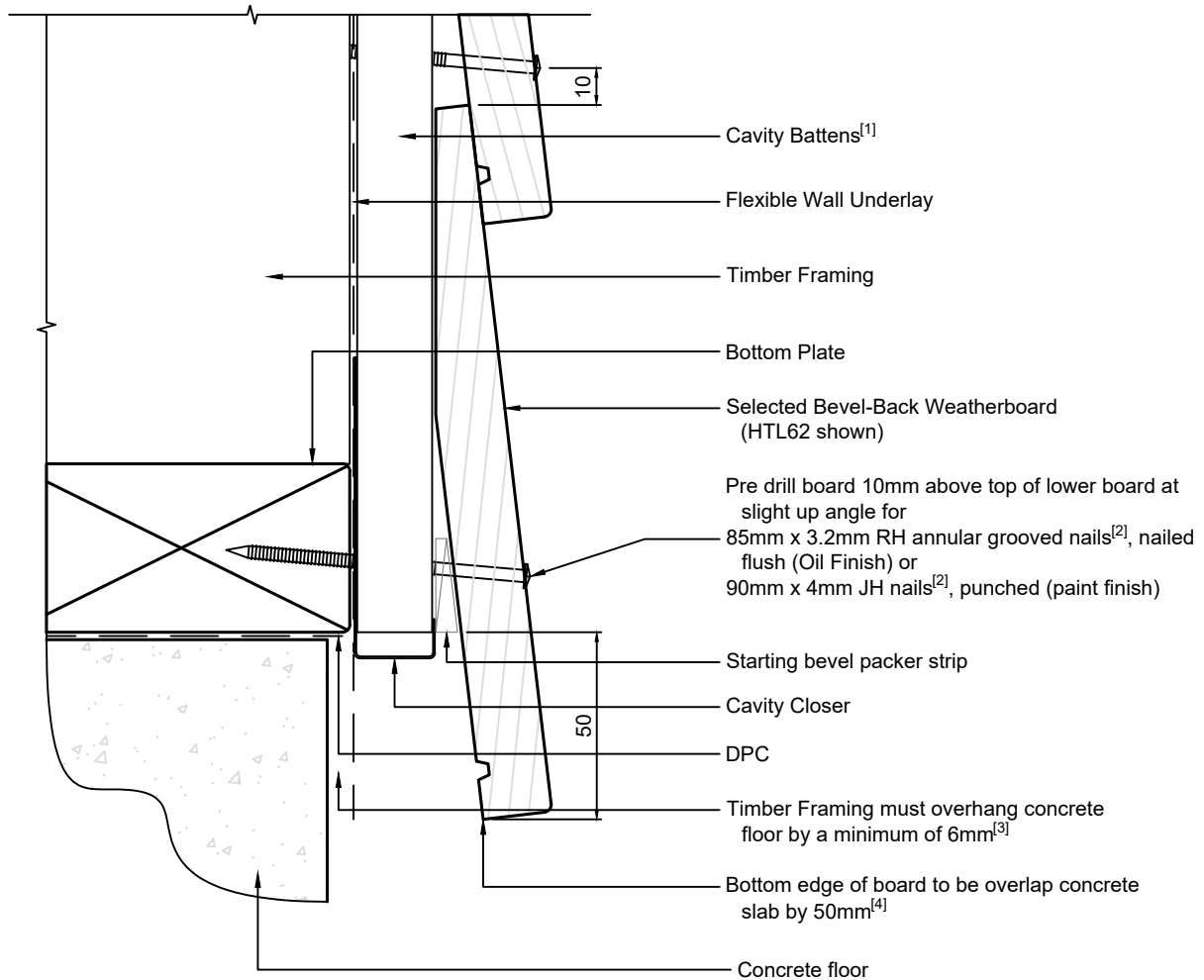
Ph: 03 544 6006
 Email: sales@htlgroup.co.nz
 Website: www.htlgroup.co.nz
 48 Beach Road, Richmond, Nelson 7020
 P O Box 3050, Richmond, Nelson 7050

Bevel Back Weatherboard
20mm Cavity Batten - Flexible Underlay
Bottom of Wall detail
Timber Floor

1:2 @ A4 2021/01/26
 Drawing No.
 4-4-211

Note:

- 1/ Cavity Battens are Horizontal Castellated timber battens (HTLBH20) and plain vertical battens (HTLBV20), temporarily fixed with cladding nails
- 2/ Cladding Fixings to comply with E2/AS1 para. 9.4.3.1 & Tables 20 & 24
- 3/ See E2/AS1 para. 9.1.3.3(c)
- 4/ See E2/AS1 para. 9.1.3.3(b)



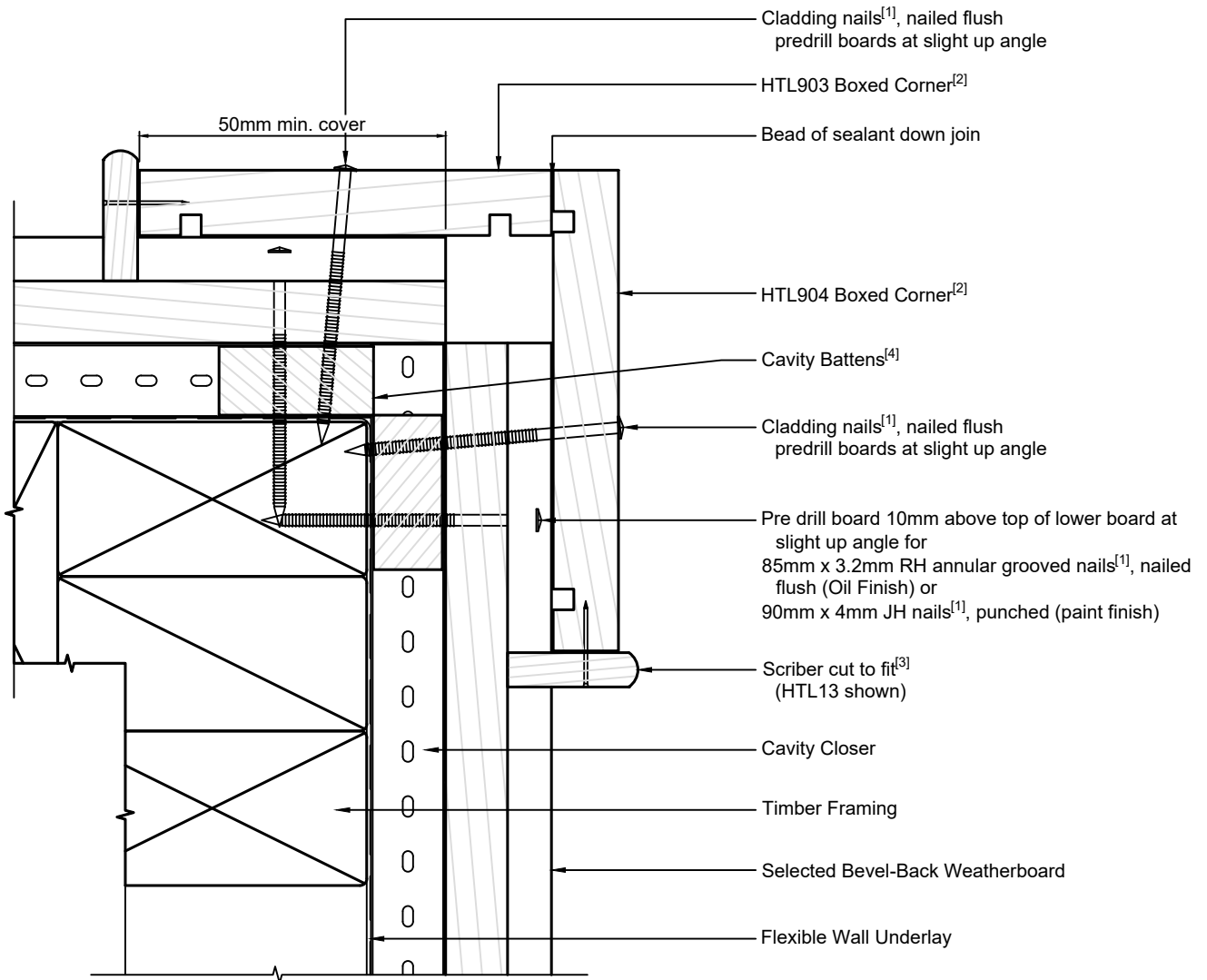
Ph: 03 544 6006
 Email: sales@htlgroup.co.nz
 Website: www.htlgroup.co.nz
 48 Beach Road, Richmond, Nelson 7020
 P O Box 3050, Richmond, Nelson 7050

**Bevel Back Weatherboard
 20mm Cavity Batten - Flexible Underlay
 Bottom of Wall detail
 Concrete Floor**

1:2 @ A4 2021/01/26
 Drawing No.
 4-4-221

Note:

- 1/ Cladding Fixings to comply with E2/AS1 para. 9.4.3.1 & Tables 20 & 24
- 2/ The minimum cover of Boxed Corner boards to comply with E2/AS1 para. 9.4.4.4(a)(i) & fig. 78(c)
- 3/ Scribe to comply with E2/AS1 para. 9.4.4.4(a)(i) & fig. 78(c)
- 4/ Cavity Battens are Horizontal Castellated timber battens (HTLBH20) and plain vertical battens (HTLBV20), temporarily fixed with cladding nails



Option A



Ph: 03 544 6006
 Email: sales@htlgroup.co.nz
 Website: www.htlgroup.co.nz
 48 Beach Road, Richmond, Nelson 7020
 P O Box 3050, Richmond, Nelson 7050

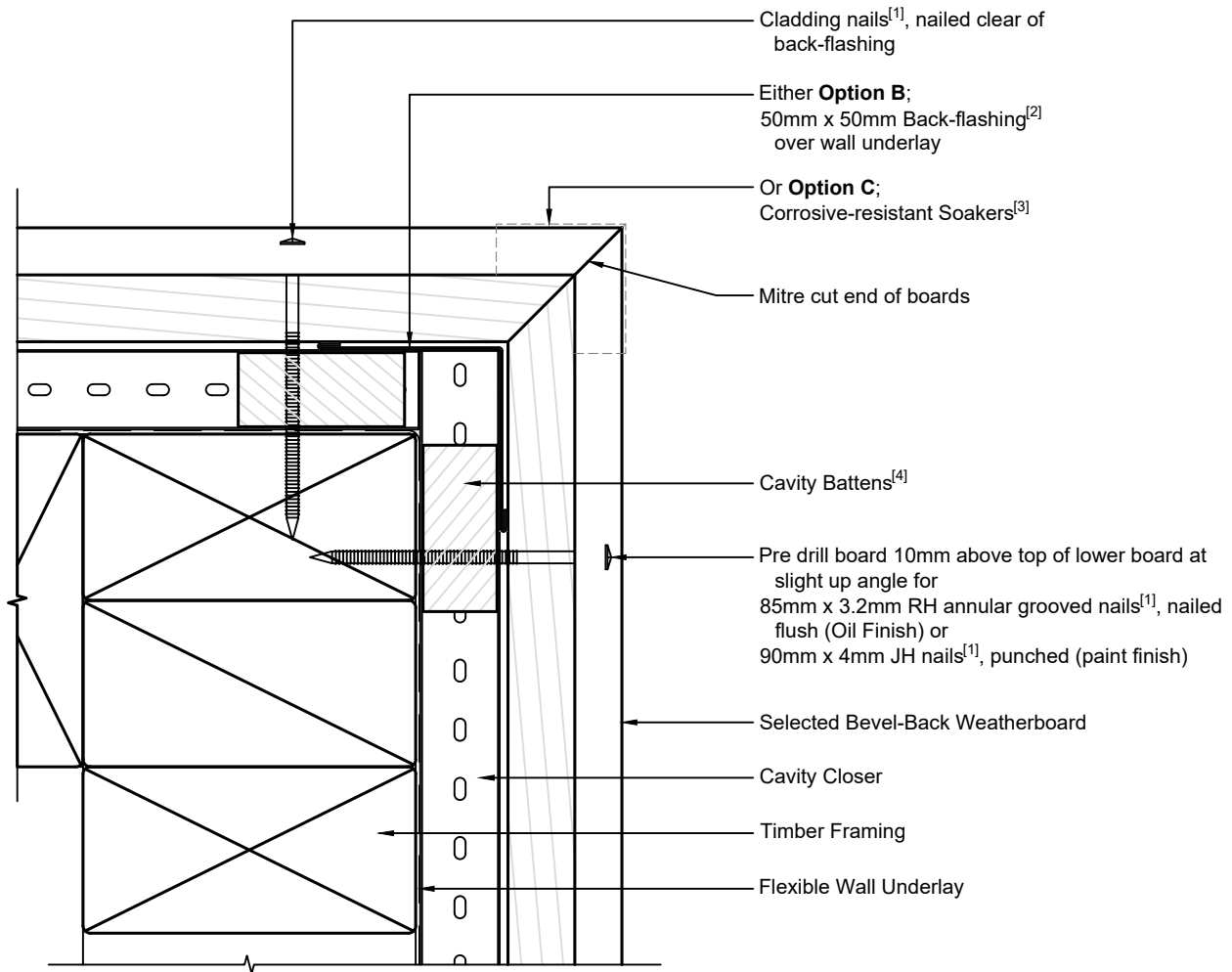
Bevel Back Weatherboard
20mm Cavity Batten - Flexible Underlay
External Corner detail
Option A - Boxed Corner

1:2 @ A4 2021/01/26

Drawing No.
 4-4-301

Note:

- 1/ Cladding Fixings to comply with E2/AS1 para. 9.4.3.1 & Tables 20 & 24
- 2/ Back-flashing as per E2/AS1 para. 9.4.4.4(b)(i) & fig. 78(d)
- 3/ Corrosive-resistant Soaker as per E2/AS1 para. 9.4.4.4(b)(ii) & fig. 77, refer also para.'s 4.3.2 to 4.3.6
- 4/ Cavity Battens are Horizontal Castellated timber battens (HTLBH20) and plain vertical battens (HTLBV20), temporarily fixed with cladding nails



Option B or C



Ph: 03 544 6006
 Email: sales@htlgroup.co.nz
 Website: www.htlgroup.co.nz
 48 Beach Road, Richmond, Nelson 7020
 P O Box 3050, Richmond, Nelson 7050

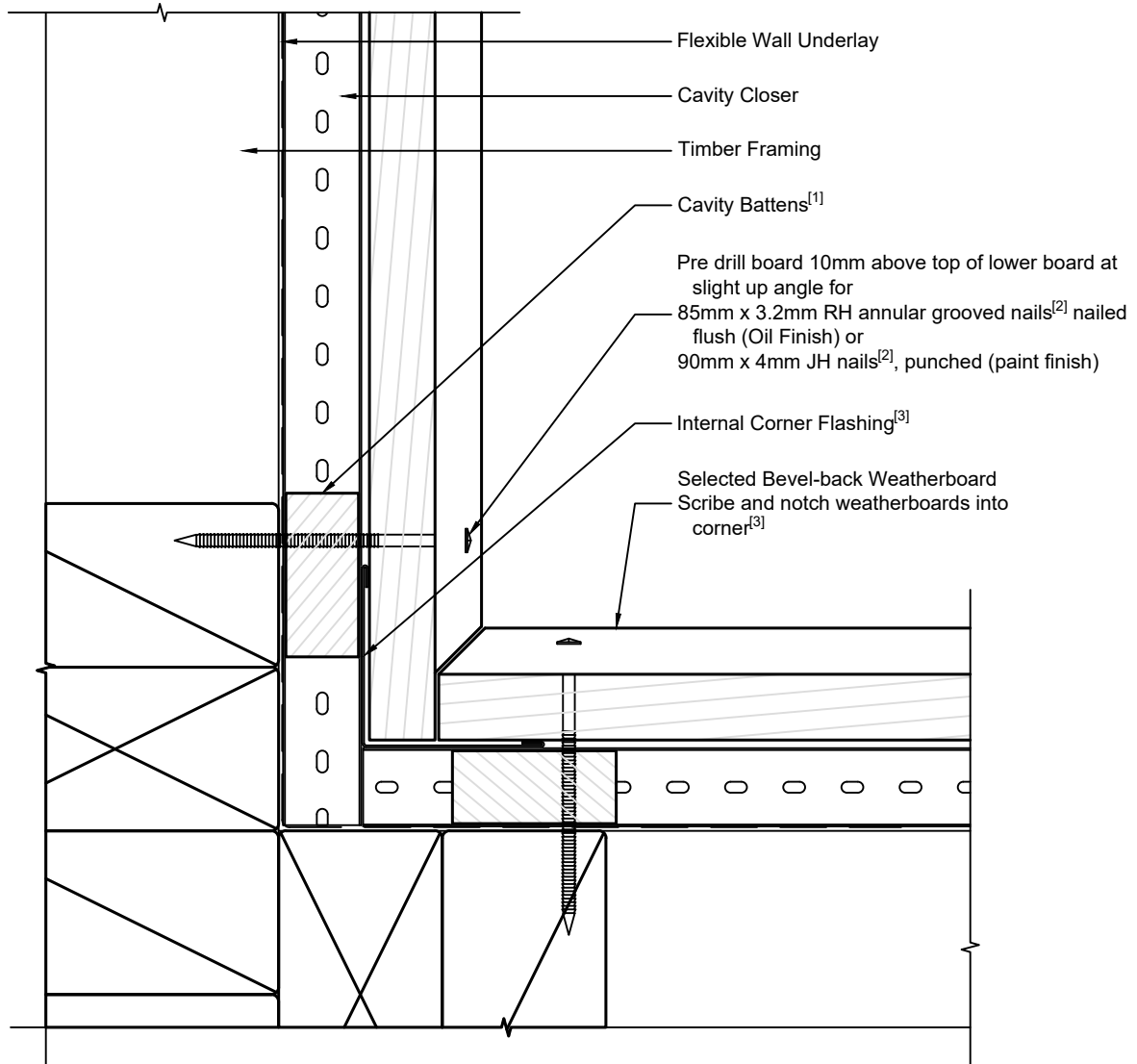
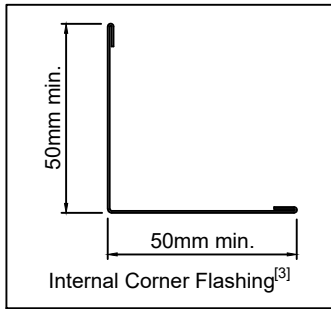
**Bevel Back Weatherboard
 20mm Cavity Batten - Flexible Underlay
 External Corner detail
 Options B or C - Mitred Corner**

1:2 @ A4

2021/01/26

Drawing No.
 4-4-302

- Note:
- 1/ Cavity Battens are Horizontal Castellated timber battens (HTLBH20) and plain vertical battens (HTLBV20), temporarily fixed with cladding nails
 - 2/ Cladding Fixings to comply with E2/AS1 para. 9.4.3.1 & Tables 20 & 24
 - 3/ Corner Flashing dimensions to comply with E2/AS1 para. 9.4.5.3(b) & Table 7 & fig. 79(c)



Option A



Ph: 03 544 6006
Email: sales@htlgroup.co.nz
Website: www.htlgroup.co.nz
48 Beach Road, Richmond, Nelson 7020
P O Box 3050, Richmond, Nelson 7050

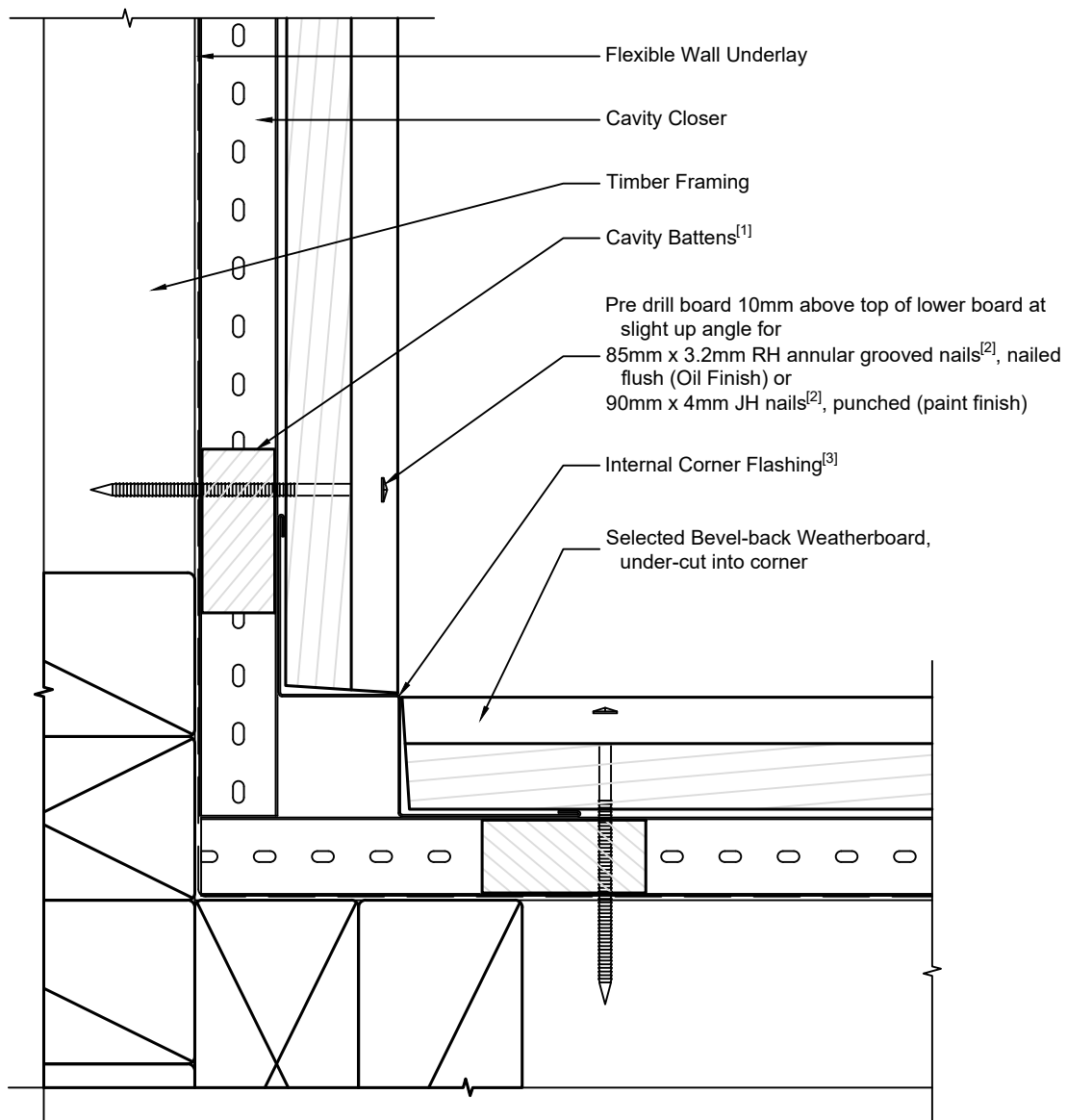
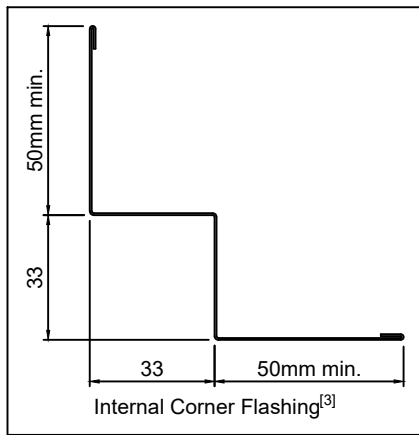
**Bevel Back Weatherboard
20mm Cavity Batten - Flexible Underlay
Internal Corner detail
Option A**

1:2 @ A4 2021/01/26

Drawing No.
4-4-351

Note:

- 1/ Cavity Battens are Horizontal Castellated timber battens (HTLBH20) and plain vertical battens (HTLBV20), temporarily fixed with cladding nails
- 2/ Cladding Fixings to comply with E2/AS1 para. 9.4.3.1 & Tables 20 & 24
- 3/ Corner Flashing dimensions to comply with E2/AS1 para. 9.4.5.3(b) & Table 7 & fig. 79(d)



Option B



Ph: 03 544 6006
 Email: sales@htlgroup.co.nz
 Website: www.htlgroup.co.nz
 48 Beach Road, Richmond, Nelson 7020
 P O Box 3050, Richmond, Nelson 7050

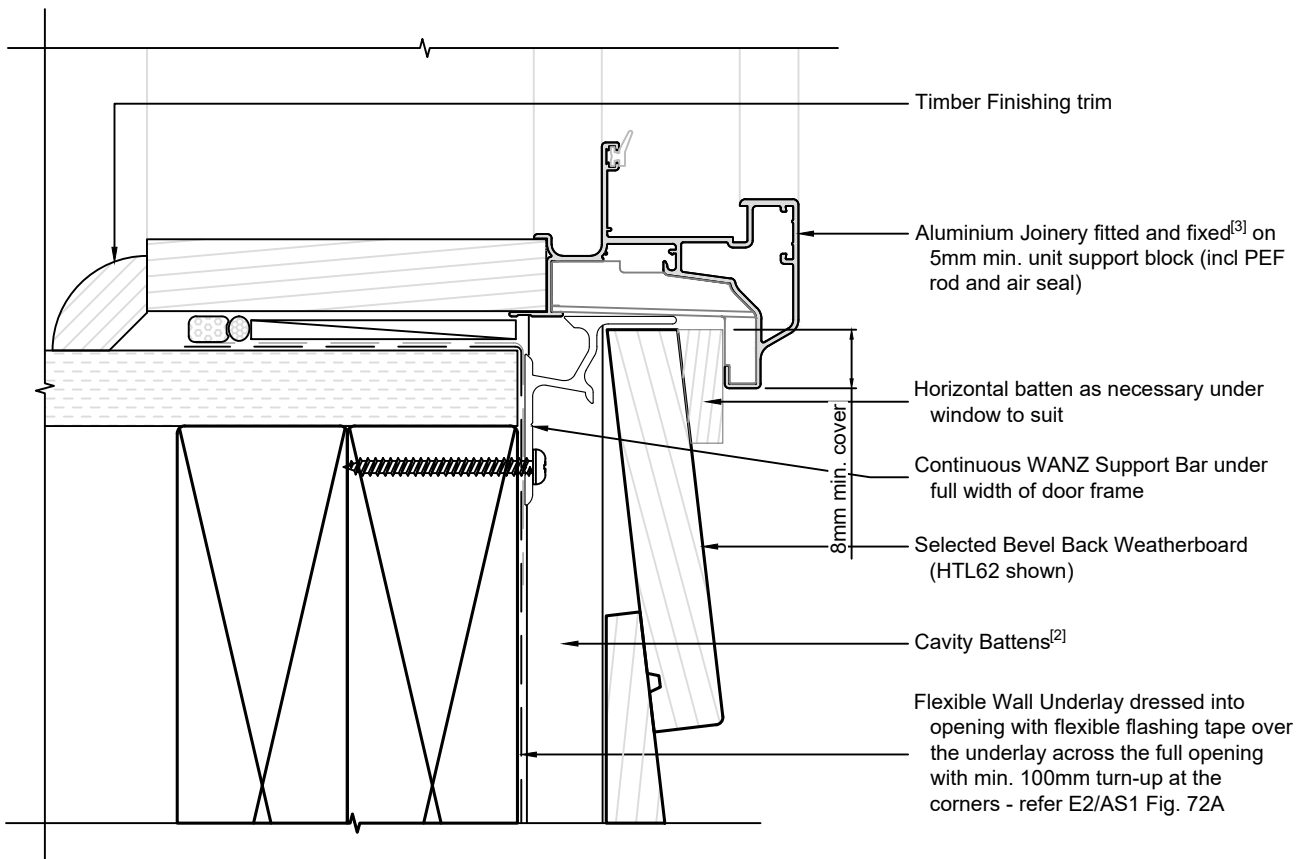
Bevel Back Weatherboard
20mm Cavity Batten - Flexible Underlay
Internal Corner detail
Option B

1:2 @ A4 2021/01/26

Drawing No.
 4-4-352

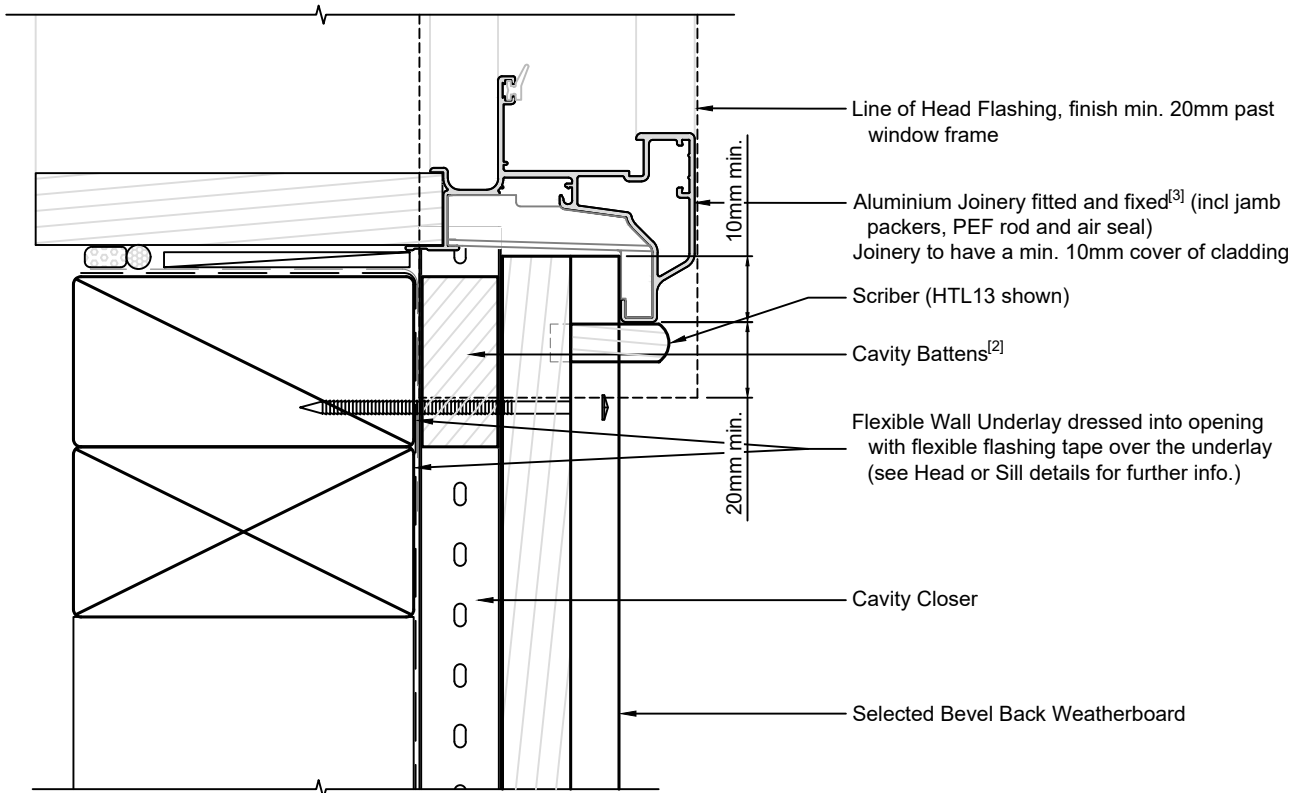
Note:

- 1/ To comply with E2/AS1, Fig.85
- 2/ Cavity Battens are Horizontal Castellated timber battens (HTLBH20) and plain vertical battens (HTLBV20), temporarily fixed with cladding nails
- 3/ Joinery Fixing to comply with E2/AS1 para. 9.1.10.8 - pairs of 75mm x 3.15mm galv. JH nails or 8g x 65mm s/s screws, through reveals into framing at max 150mm from corners and at 450mm centres along sill
- 4/ Cladding Fixings to comply with E2/AS1 para. 9.4.3.1 & Tables 20 & 24



Note:

- 1/ To comply with E2/AS1, Fig.85
- 2/ Cavity Battens are Horizontal Castellated timber battens (HTLBH20) and plain vertical battens (HTLBV20), temporarily fixed with cladding nails
- 3/ Joinery Fixing to comply with E2/AS1 para. 9.1.10.8 - pairs of 75mm x 3.15mm galv. JH nails or 8g x 65mm s/s screws, through reveals into framing at max 150mm from corners and at 450mm centres along sill
- 4/ Cladding Fixings to comply with E2/AS1 para. 9.4.3.1 & Tables 20 & 24



Ph: 03 544 6006
 Email: sales@htlgroup.co.nz
 Website: www.htlgroup.co.nz
 48 Beach Road, Richmond, Nelson 7020
 P O Box 3050, Richmond, Nelson 7050

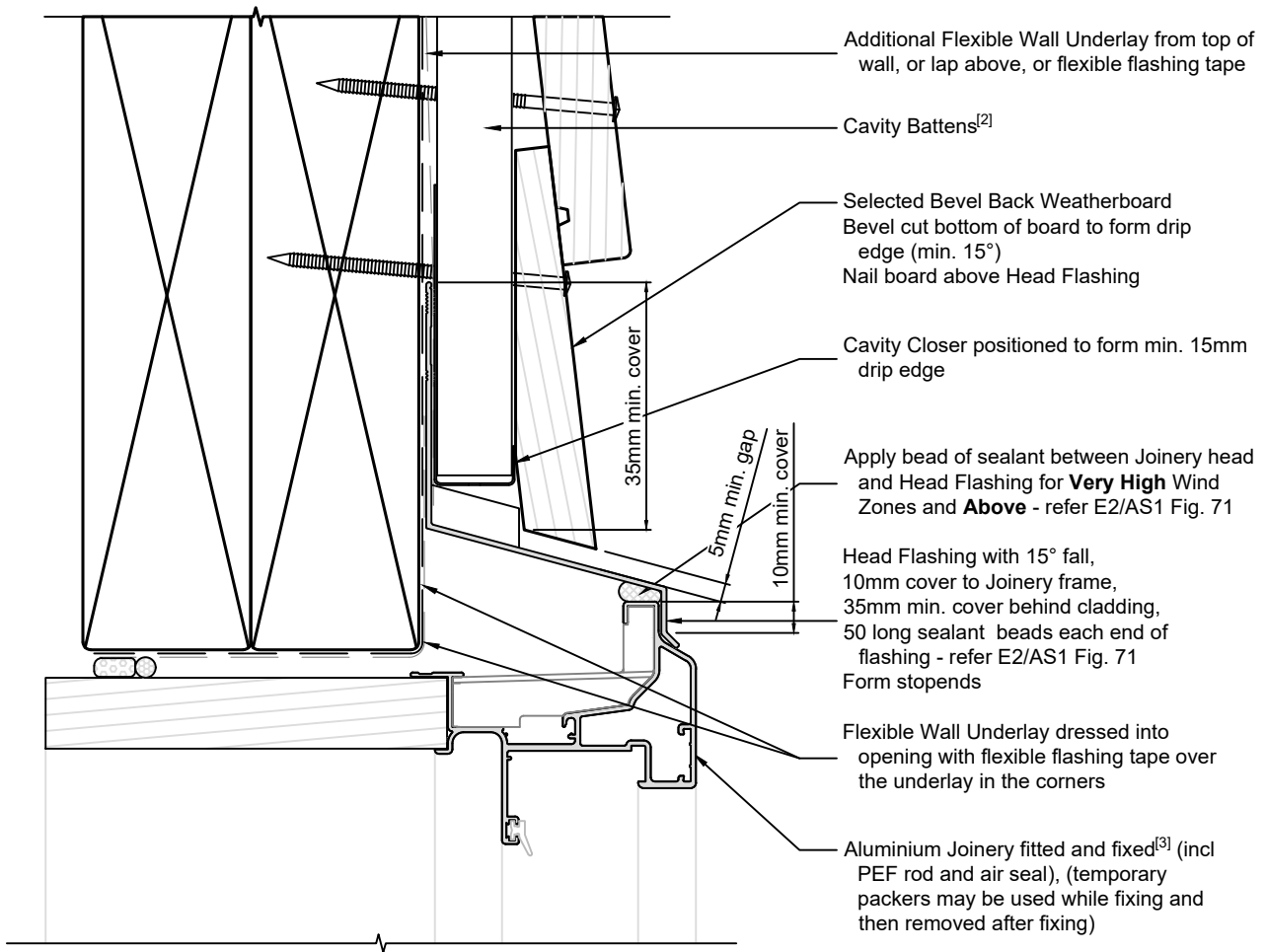
**Bevel Back Weatherboard
 20mm Cavity Batten - Flexible Underlay
 Door Jamb detail**

1:2 @ A4 2021/01/26

Drawing No.
 4-4-502

Note:

- 1/ To comply with E2/AS1, Fig.85
- 2/ Cavity Battens are Horizontal Castellated timber battens (HTLBH20) and plain vertical battens (HTLBV20), temporarily fixed with cladding nails
- 3/ Joinery Fixing to comply with E2/AS1 para. 9.1.10.8 - pairs of 75mm x 3.15mm galv. JH nails or 8g x 65mm s/s screws, through reveals into framing at max 150mm from corners and at 450mm centres along sill
- 4/ Cladding Fixings to comply with E2/AS1 para. 9.4.3.1 & Tables 20 & 24



Ph: 03 544 6006
 Email: sales@htlgroup.co.nz
 Website: www.htlgroup.co.nz
 48 Beach Road, Richmond, Nelson 7020
 P O Box 3050, Richmond, Nelson 7050

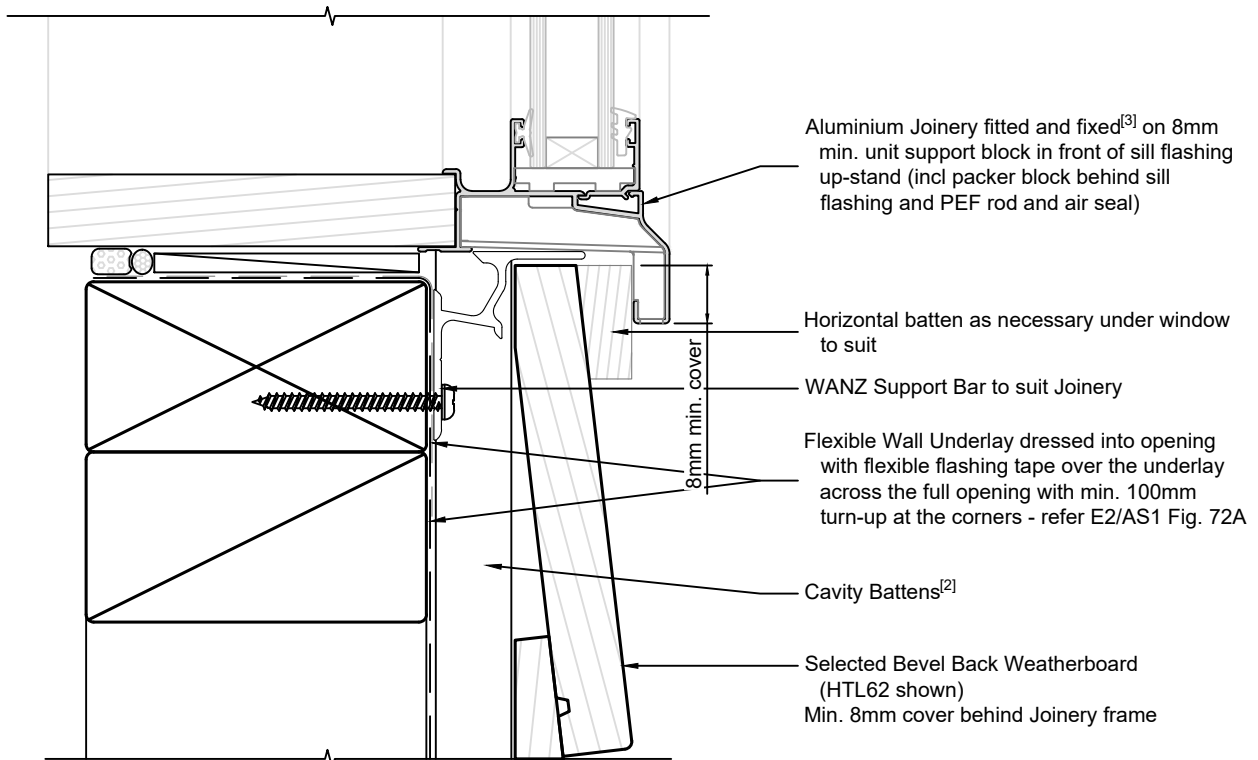
**Bevel Back Weatherboard
 20mm Cavity Batten - Flexible Underlay
 Door Head detail**

1:2 @ A4 2021/01/26

Drawing No.
 4-4-503

Note:

- 1/ To comply with E2/AS1, Fig.85
- 2/ Cavity Battens are Horizontal Castellated timber battens (HTLBH20) and plain vertical battens (HTLBV20), temporarily fixed with cladding nails
- 3/ Joinery Fixing to comply with E2/AS1 para. 9.1.10.8 - pairs of 75mm x 3.15mm galv. JH nails or 8g x 65mm s/s screws, through reveals into framing at max 150mm from corners and at 450mm centres along sill
- 4/ Cladding Fixings to comply with E2/AS1 para. 9.4.3.1 & Tables 20 & 24



Ph: 03 544 6006
 Email: sales@htlgroup.co.nz
 Website: www.htlgroup.co.nz
 48 Beach Road, Richmond, Nelson 7020
 P O Box 3050, Richmond, Nelson 7050

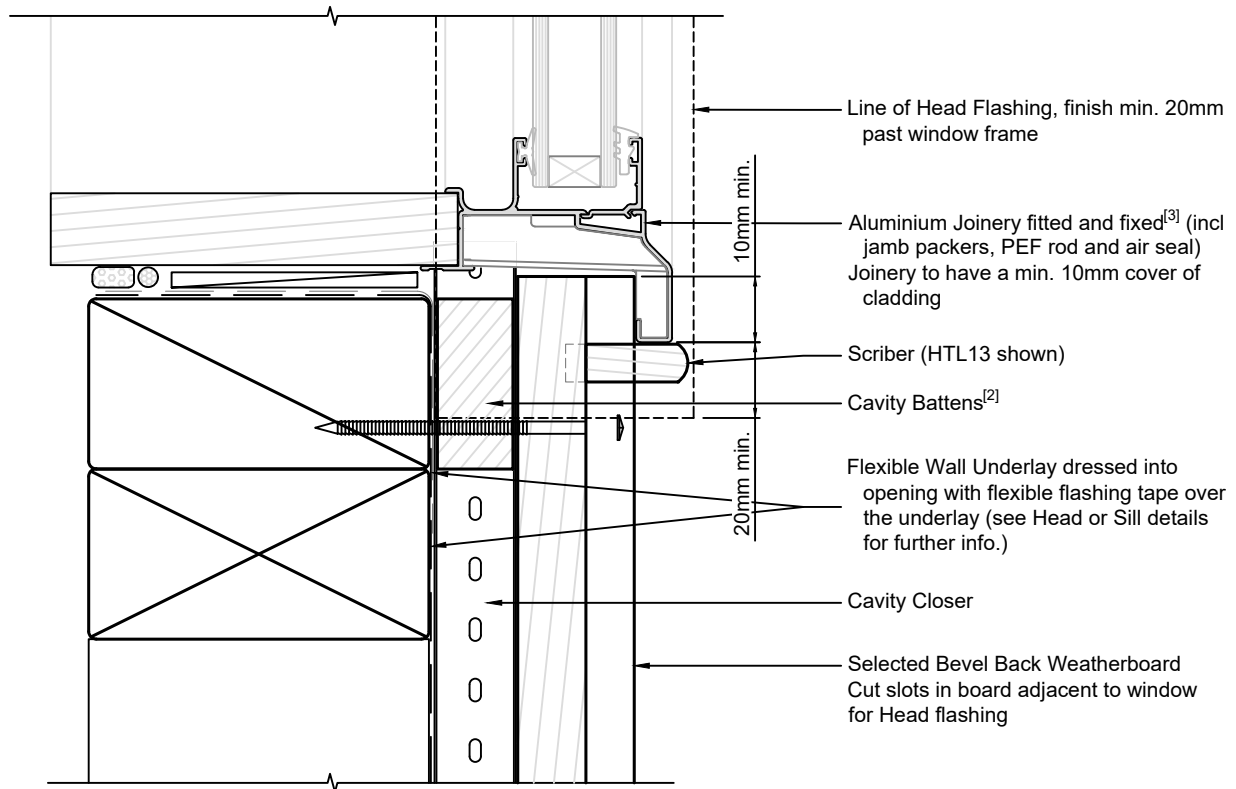
**Bevel Back Weatherboard
 20mm Cavity Batten - Flexible Underlay
 Window Sill detail**

1:2 @ A4 2021/01/26

Drawing No.
 4-4-601

Note:

- 1/ To comply with E2/AS1, Fig.85
- 2/ Cavity Battens are Horizontal Castellated timber battens (HTLBH20) and plain vertical battens (HTLBV20), temporarily fixed with cladding nails
- 3/ Joinery Fixing to comply with E2/AS1 para. 9.1.10.8 - pairs of 75mm x 3.15mm galv. JH nails or 8g x 65mm s/s screws, through reveals into framing at max 150mm from corners and at 450mm centres along sill
- 4/ Cladding Fixings to comply with E2/AS1 para. 9.4.3.1 & Tables 20 & 24



Ph: 03 544 6006
 Email: sales@htlgroup.co.nz
 Website: www.htlgroup.co.nz
 48 Beach Road, Richmond, Nelson 7020
 P O Box 3050, Richmond, Nelson 7050

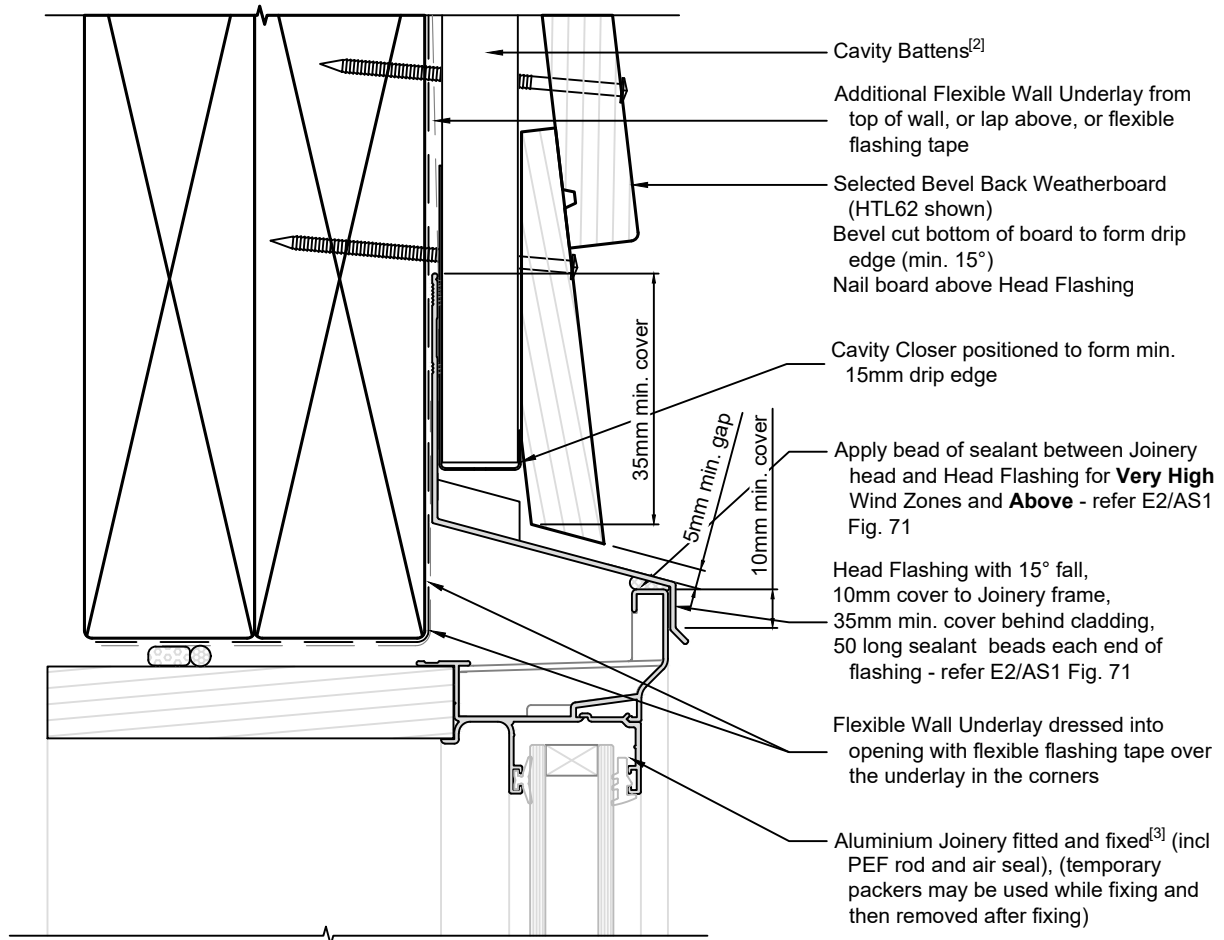
**Bevel Back Weatherboard
 20mm Cavity Batten - Flexible Underlay
 Window Jamb detail**

1:2 @ A4 2021/01/26

Drawing No.
 4-4-602

Note:

- 1/ To comply with E2/AS1, Fig.85
- 2/ Cavity Battens are Horizontal Castellated timber battens (HTLBH20) and plain vertical battens (HTLBV20), temporarily fixed with cladding nails
- 3/ Joinery Fixing to comply with E2/AS1 para. 9.1.10.8 - pairs of 75mm x 3.15mm galv. JH nails or 8g x 65mm s/s screws, through reveals into framing at max 150mm from corners and at 450mm centres along sill
- 4/ Cladding Fixings to comply with E2/AS1 para. 9.4.3.1 & Tables 20 & 24



Ph: 03 544 6006
 Email: sales@htlgroup.co.nz
 Website: www.htlgroup.co.nz
 48 Beach Road, Richmond, Nelson 7020
 P O Box 3050, Richmond, Nelson 7050

**Bevel Back Weatherboard
 20mm Cavity Batten - Flexible Underlay
 Window Head detail**

1:2 @ A4

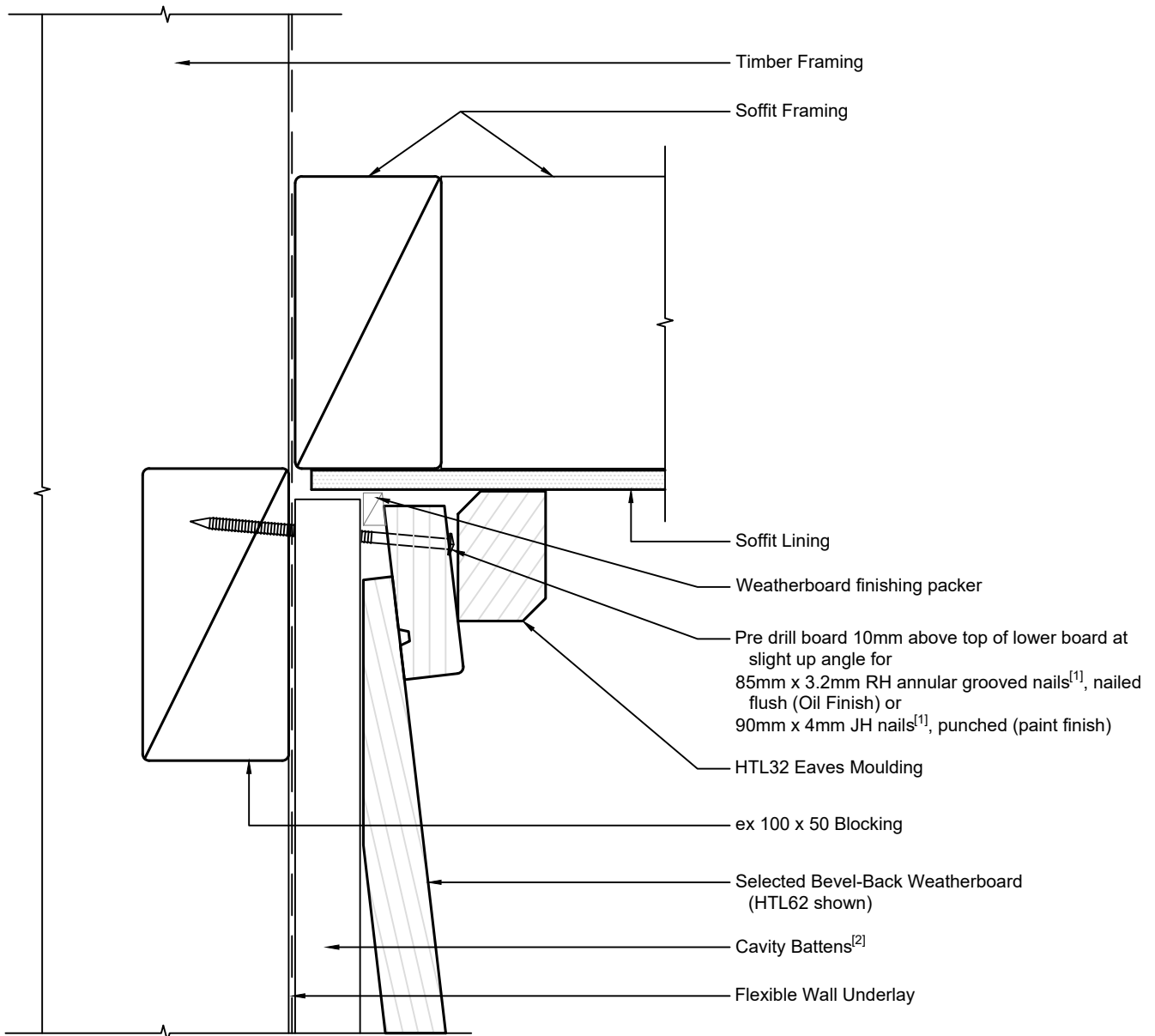
2021/01/26

Drawing No.
 4-4-603

Note:

1/ Cladding Fixings to comply with E2/AS1 para. 9.4.3.1 & Tables 20 & 24

2/ Cavity Battens are Horizontal Castellated timber battens (HTLBH20) and plain vertical battens (HTLBV20), temporarily fixed with cladding nails



Ph: 03 544 6006
Email: sales@htlgroup.co.nz
Website: www.htlgroup.co.nz
48 Beach Road, Richmond, Nelson 7020
P O Box 3050, Richmond, Nelson 7050

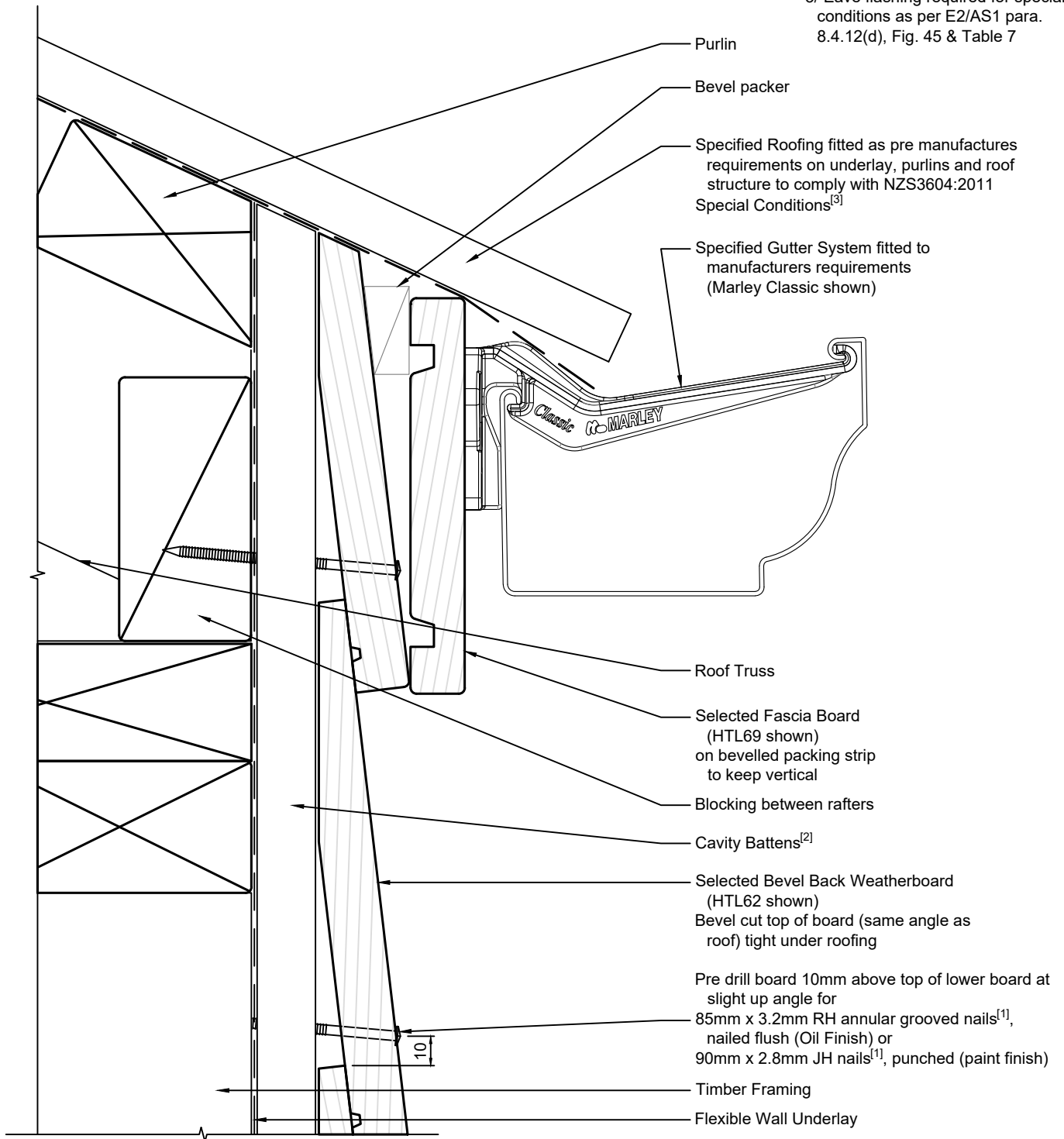
**Bevel Back Weatherboard
20mm Cavity Batten - Flexible Underlay
Soffit detail**

1:2 @ A4 | 2021/01/26

Drawing No.
4-4-801

Note:

- 1/ Cladding Fixings to comply with E2/AS1 para. 9.4.3.1 & Tables 20 & 24
- 2/ Cavity Battens are Horizontal Castellated timber battens (HTLBH20) and plain vertical battens (HTLBV20), temporarily fixed with cladding nails
- 3/ Eave flashing required for special conditions as per E2/AS1 para. 8.4.12(d), Fig. 45 & Table 7



Ph: 03 544 6006
 Email: sales@htlgroup.co.nz
 Website: www.htlgroup.co.nz
 48 Beach Road, Richmond, Nelson 7020
 P O Box 3050, Richmond, Nelson 7050

**Bevel Back Weatherboard
 20mm Cavity Batten - Flexible Underlay
 Flush Eave detail**

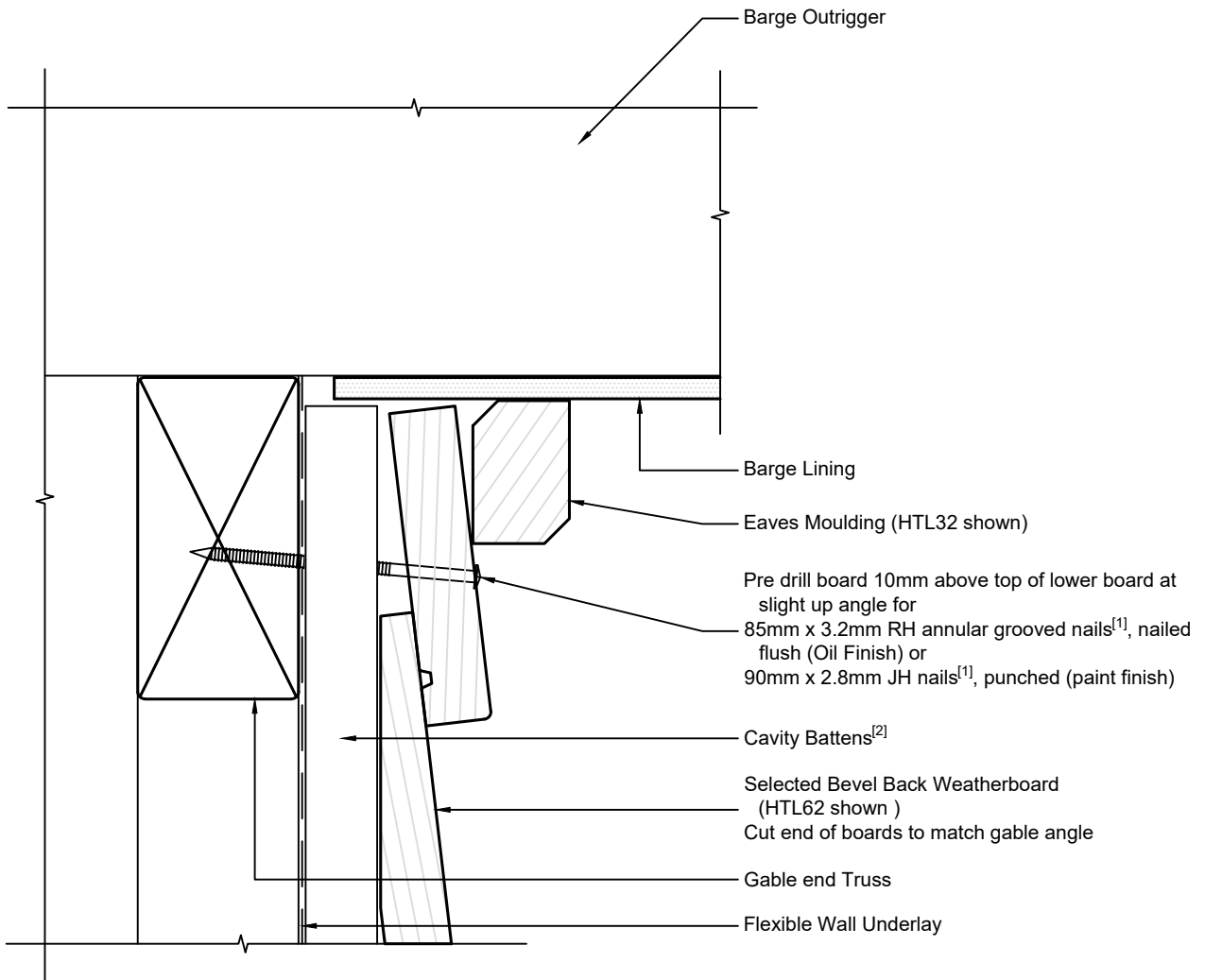
1:2 @ A4 2021/01/26

Drawing No.
 4-4-802

Note:

1/ Cladding Fixings to comply with E2/AS1 para. 9.4.3.1 & Tables 20 & 24

2/ Cavity Battens are Horizontal Castellated timber battens (HTLBH20) and plain vertical battens (HTLBV20), temporarily fixed with cladding nails



Ph: 03 544 6006
 Email: sales@htlgroup.co.nz
 Website: www.htlgroup.co.nz
 48 Beach Road, Richmond, Nelson 7020
 P O Box 3050, Richmond, Nelson 7050

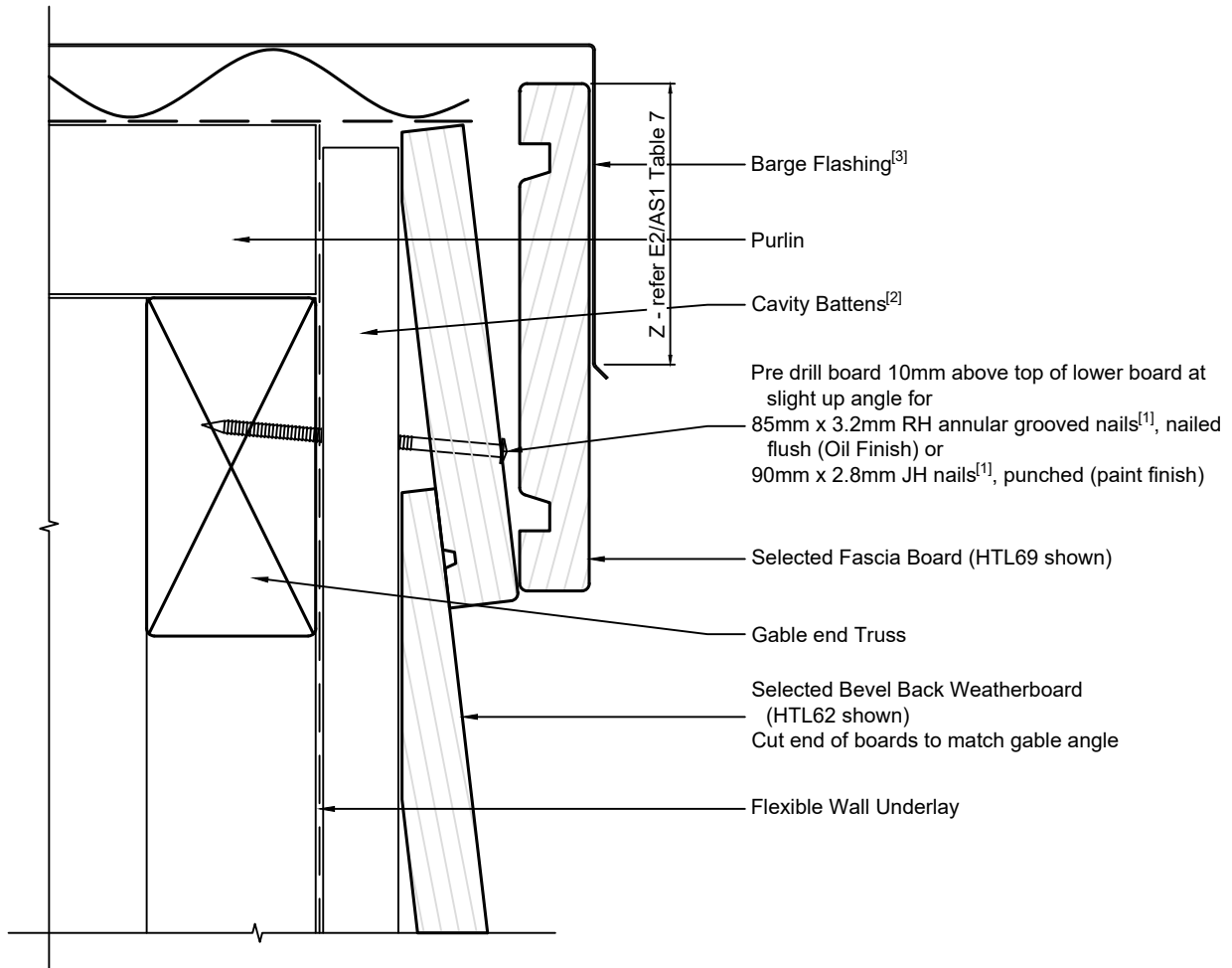
**Bevel Back Weatherboard
 20mm Cavity Batten - Flexible Underlay
 Barge Soffit detail**

1:2 @ A4

2021/01/26

Drawing No.
 4-4-851

- Note:
- 1/ Cladding Fixings to comply with E2/AS1 para. 9.4.3.1 & Tables 20 & 24
 - 2/ Cavity Battens are Horizontal Castellated timber battens (HTLBH20) and plain vertical battens (HTLBV20), temporarily fixed with cladding nails
 - 3/ Barge flashing to comply with E2/AS1 para. 8.4.12(f), Fig. 47 & Table 7



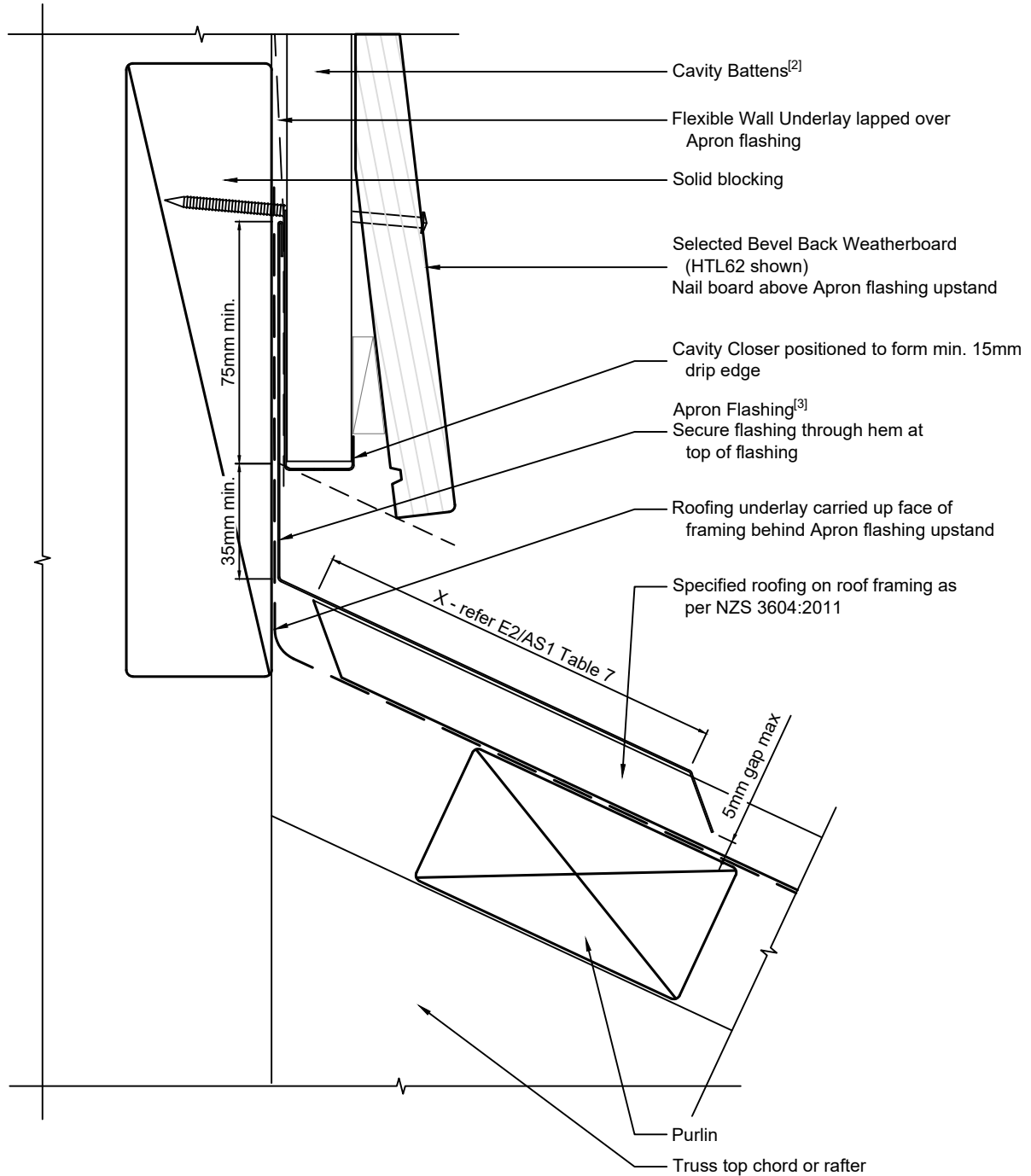
Ph: 03 544 6006
 Email: sales@htlgroup.co.nz
 Website: www.htlgroup.co.nz
 48 Beach Road, Richmond, Nelson 7020
 P O Box 3050, Richmond, Nelson 7050

**Bevel Back Weatherboard
 20mm Cavity Batten - Flexible Underlay
 Flush Barge detail**

1:2 @ A4	2021/01/26
Drawing No. 4-4-852	

Note:

- 1/ Cladding Fixings to comply with E2/AS1 para. 9.4.3.1 & Tables 20 & 24
- 2/ Cavity Battens are Horizontal Castellated timber battens (HTLBH20) and plain vertical battens (HTLBV20), temporarily fixed with cladding nails
- 3/ Apron flashing to comply with E2/AS1 para. 8.4.12(f), Fig. 7 & Table 7



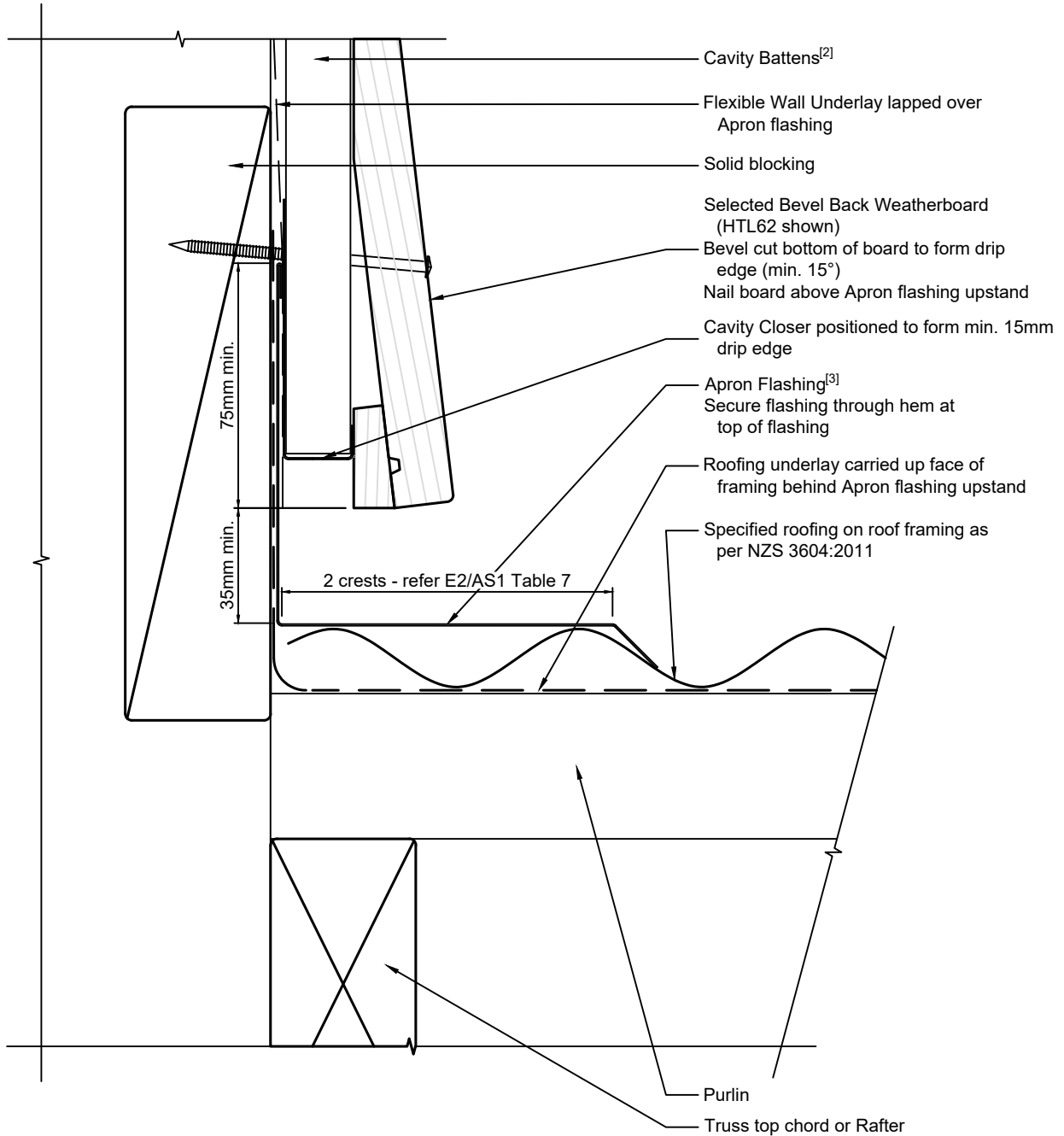
Ph: 03 544 6006
 Email: sales@htlgroup.co.nz
 Website: www.htlgroup.co.nz
 48 Beach Road, Richmond, Nelson 7020
 P O Box 3050, Richmond, Nelson 7050

**Bevel Back Weatherboard
 20mm Cavity Batten - Flexible Underlay
 Wall to Roof detail
 Top of roofing**

1:2 @ A4	2021/01/26
Drawing No. 4-4-901	

Note:

- 1/ Cladding Fixings to comply with E2/AS1 para. 9.4.3.1 & Tables 20 & 24
- 2/ Cavity Battens are Horizontal Castellated timber battens (HTLBH20) and plain vertical battens (HTLBV20), temporarily fixed with cladding nails
- 3/ Apron flashing to comply with E2/AS1 para. 8.4.12(f), Fig. 7 & Table 7

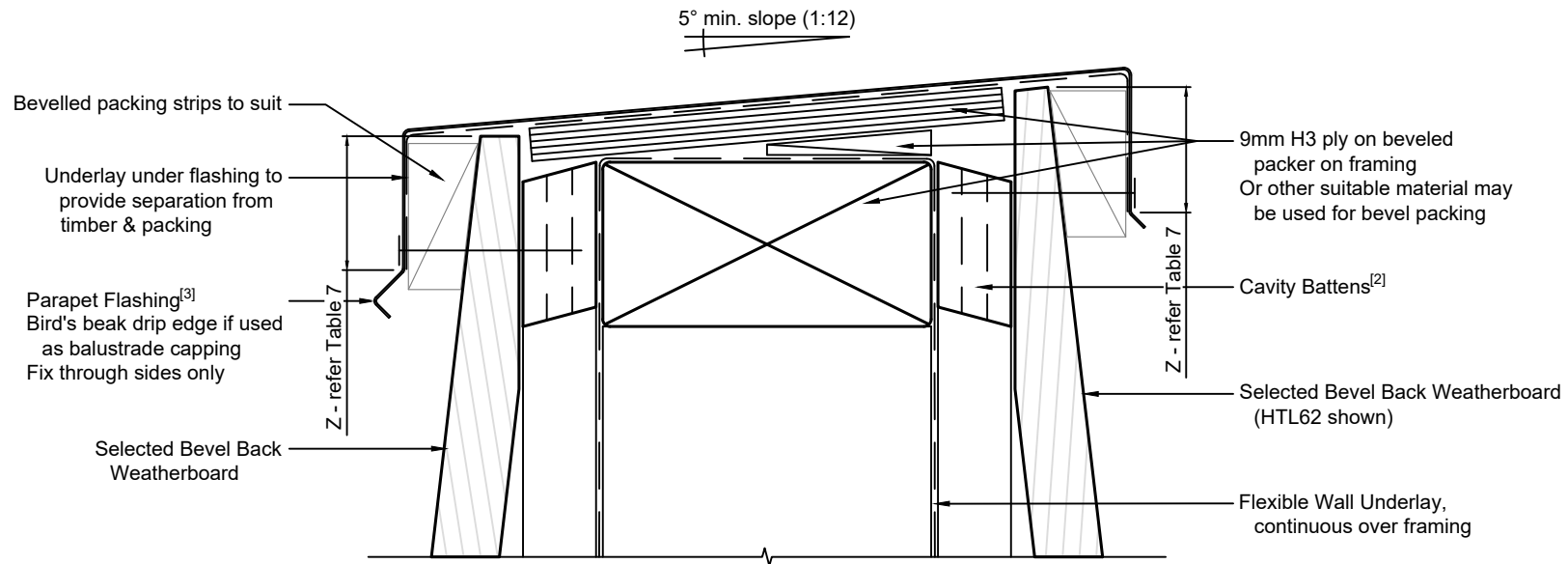


Ph: 03 544 6006
 Email: sales@htlgroup.co.nz
 Website: www.htlgroup.co.nz
 48 Beach Road, Richmond, Nelson 7020
 P O Box 3050, Richmond, Nelson 7050

**Bevel Back Weatherboard
 20mm Cavity Batten - Flexible Underlay
 Wall to Roof detail
 Side of roofing**

1:2 @ A4	2021/01/26
Drawing No. 4-4-902	

- Note:**
- 1/ Cladding Fixings to comply with E2/AS1 para. 9.4.3.1 & Tables 20 & 24
 - 2/ Cavity Battens are Horizontal Castelled timber battens (HTLBH20) and plain vertical battens (HTLBV20), temporarily fixed with cladding nails
 - 3/ Parapet flashings to comply with E2/AS1 para. 6.2 & 6.4, Fig. 10 & Table 7



Ph: 03 544 6006
 Email: sales@htlgroup.co.nz
 Website: www.htlgroup.co.nz
 48 Beach Road, Richmond, Nelson 7020
 P O Box 3050, Richmond, Nelson 7050

**Bevel Back Weatherboard
 20mm Cavity Batten - Flexible Underlay
 Parapet detail**

1:2 @ A4 2021/01/26

Drawing No.
 4-4-911