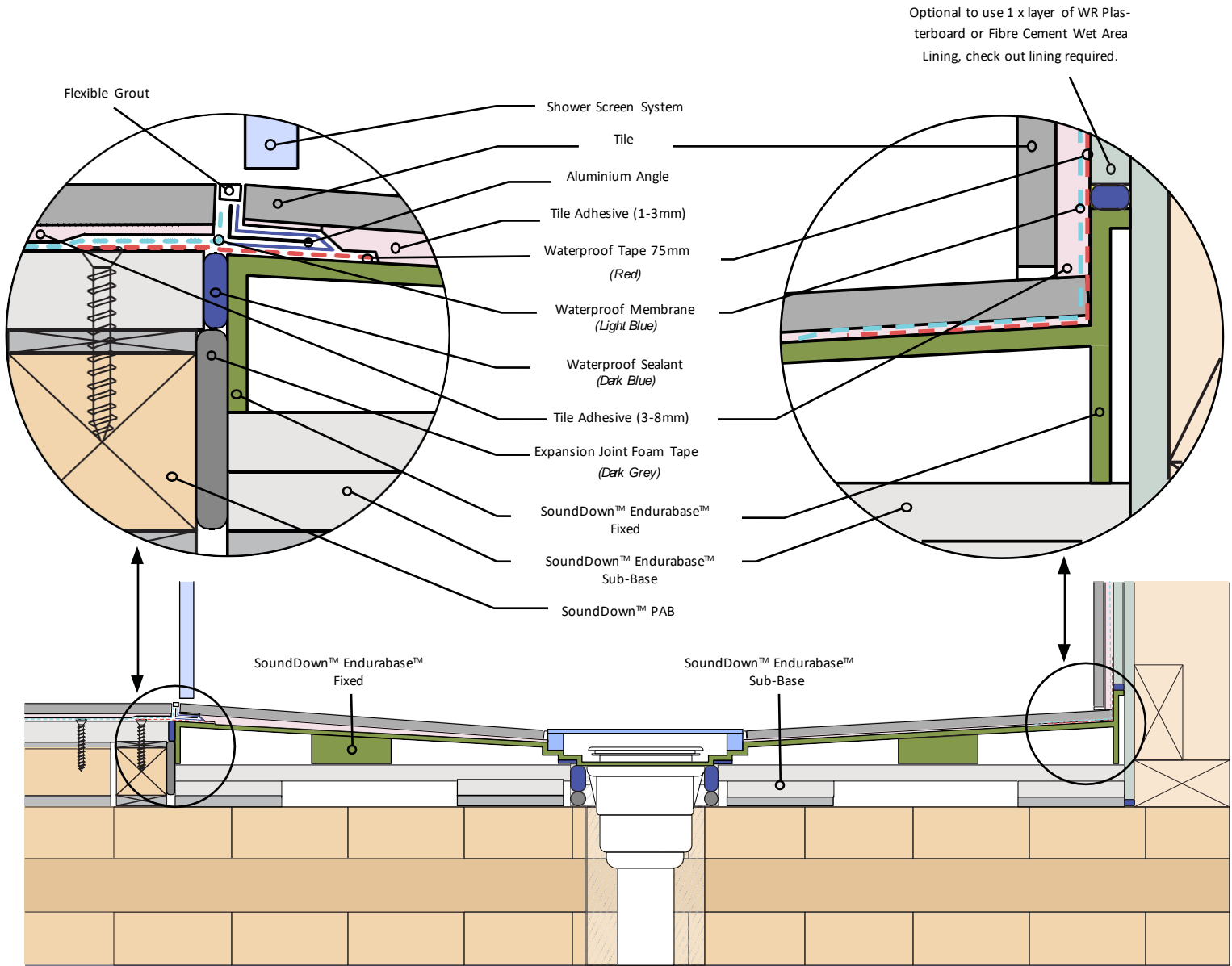


# SECTION 10 | SOUNDDOWN™ ENDURABASE™ FIXED DETAILS

SoundDown™ Endurabase™ is designed to achieve a flush shower entry when used with SoundDown™ PAB Acoustic Floor System. SoundDown™ recommend design coordination with the builder, architect, specifier, 3rd party manufacturers and SoundDown™ to ensure a robust, code compliance solution.



 SoundDown™ recommends the use of Ardex Waterproofing Product. See Page 8 for more information.

### SoundDown™ PAB System

- Penetrations in the CLT must be a maximum of 10mm larger than required pipe/ducting and filled with backing rod & waterproof sealant.
- Check components table for fastener specification.
- Fastener heads to be covered in waterproof sealant, scrape flush to floor.

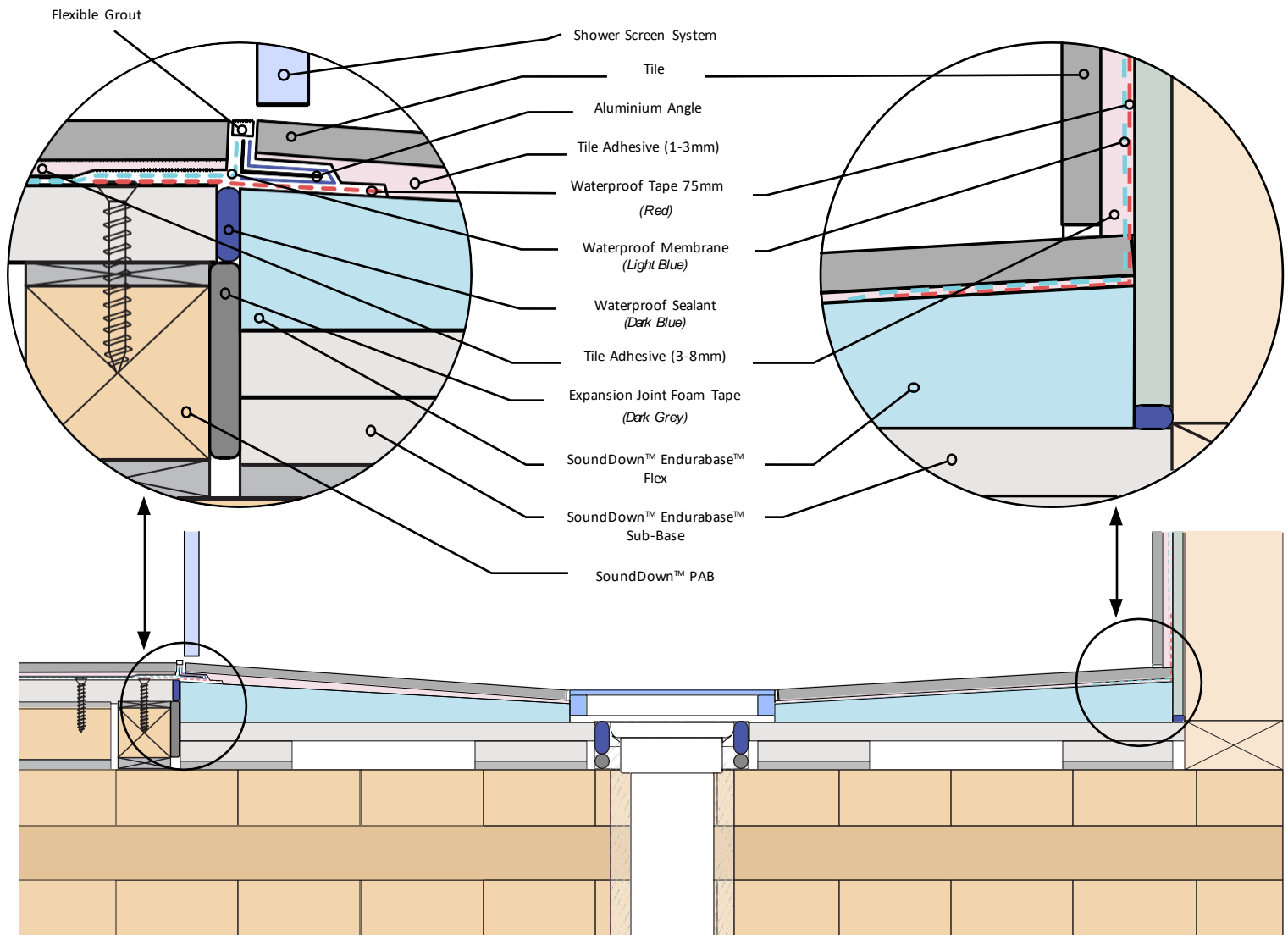
### Important Information


- Where a CLT wall is specified, above details apply.
- By partnering with Ardex, SoundDown™ offer a warranted solution for wet areas. Where an alternate waterproofing system is specified; consult the manufacturer to confirm suitability of products and warranty terms and conditions.
- Fire & Acoustic performance can be adversely affected by penetrations; it is the responsibility of the designer to coordinate with 3rd parties to ensure penetrations and products used are compliant and meet project requirements.

**SoundDown™ Endurabase™ Sub-Base**  
Pre-fabricated  
aoustically-isolated,

## SECTION 10 | SOUNDDOWN™ ENDURABASE™ FLEX DETAILS

SoundDown™ Endurabase™ is designed to achieve a flush shower entry when used with SoundDown™ PAB Acoustic Floor System. Endurabase™ FLEX is customisable and trimmable on-site. SoundDown™ recommend design coordination with the builder, architect, specifier, 3rd party manufacturers and SoundDown™ to ensure a robust, code compliance solution.



 SoundDown™ recommends the use of Ardex Waterproofing Product. See Page 8 for more information.

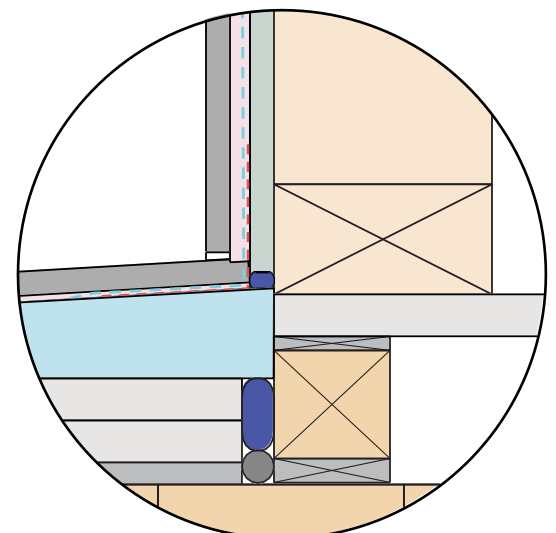
### SoundDown™ PAB System

- Penetrations in the CLT must be a maximum of 10mm larger than required pipe/ducting and filled with backing rod & waterproof sealant.
- Check components table for fastener specification.
- Fastener heads to be covered in waterproof sealant, scrape flush to floor.

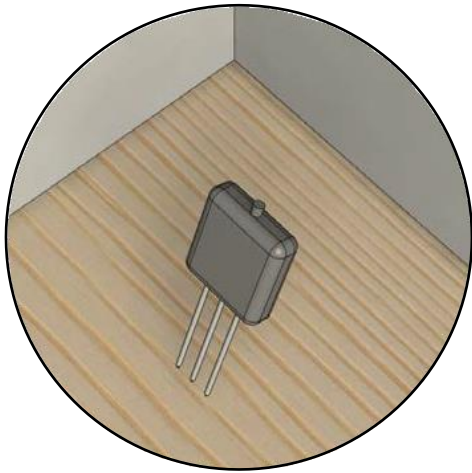
### Important Information

- Where a CLT wall is specified, above details apply.
- By partnering with Ardex, SoundDown™ offer a warranted solution for wet areas. Where an alternate waterproofing system is specified; consult the manufacturer to confirm suitability of products and warranty terms and conditions.
- Fire & Acoustic performance can be adversely affected by penetrations; it is the responsibility of the designer to coordinate with 3rd parties to ensure penetrations and products used are compliant and meet project requirements.

### ALTERNATE PARTITION WALL DETAIL



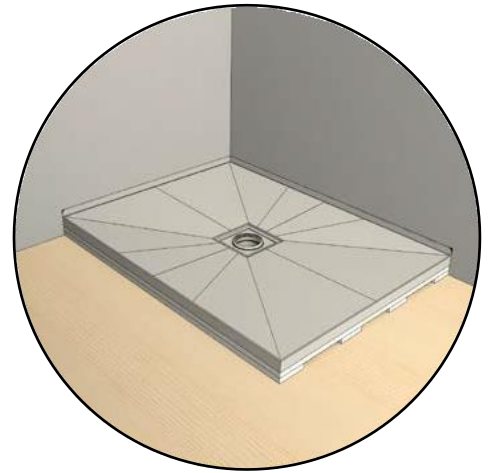
## SECTION 10 | SOUNDDOWN™ ENDURABASE™ INSTALLATION



- Ensure CLT is free of debris, dust, nails and screws.
- Check CLT moisture content, must be under <16% before installation.
- If the CLT has been coated, install after desired curing time has lapsed.
- Wall lining to be installed before installing SoundDown™ Shower Tray Module.



- If adjoining wall is stud frame, additional studs and turned noggins on base plate are required to support shower tray module width and length.
- If adjoining wall is CLT, additional furring channels are required.
- Measure shower tray and cut out notches in wet area lining to allow for shower tray module upstands, allow for a tight fit between shower tray module and wet area lining.



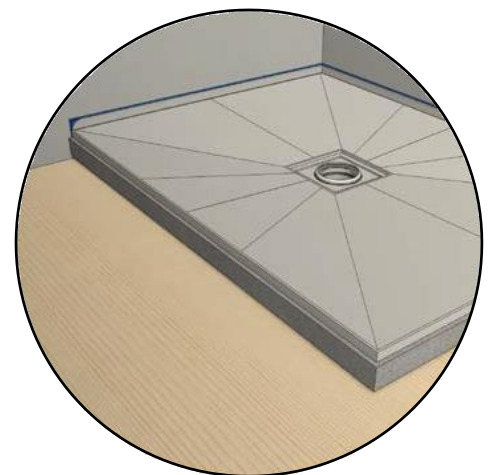
- Position Endurabase™ Sub-Base first, followed by Endurabase™ Fixed or Flex, ensuring penetration is aligned to the drain waste of the Shower Tray Module.
- Check penetrations in the CLT floor are no bigger than 10mm than the Easy Clean Waste Drain outlet.
- Use an epoxy adhesive to glue back of Shower Tray Module to wall base.
- Do NOT mechanically fix Shower Tray Module to the CLT structural floor. The Shower Tray Module is designed to 'float' over the floor.



- Install the Easy Clean Waste with extended drain pipe into the penetration, seal the penetration with 10mm backing rod and filling penetration gap with waterproof sealant.
- The project may require an alternate detail such as use of waterproof elastic collars or other; follow the 3rd party manufacturer's recommendations.

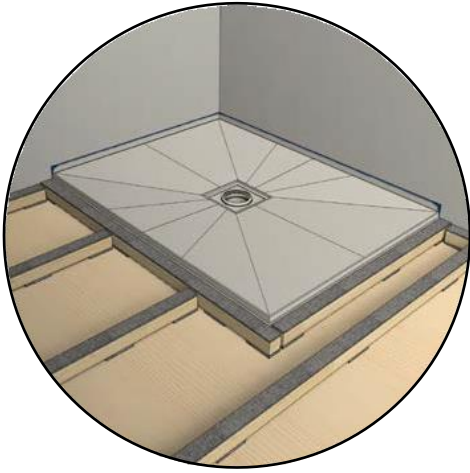


- Apply a continuous 6-8mm bead of the waterproof sealant at the joint between Shower Tray Module and Wet Area Lining.

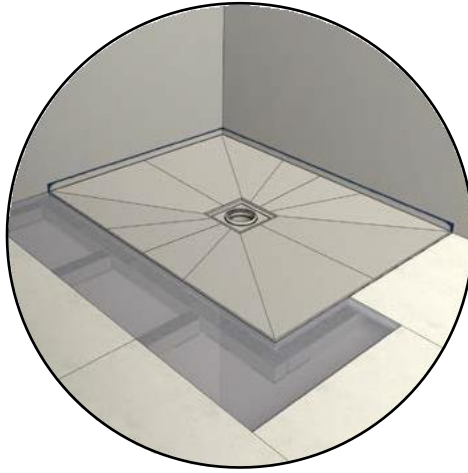


- Fix a 10x50mm Expansion Joint Foam Tape to the Shower Tray Module, ensure there is a 20mm distance from top of the foam to the top of the shower tray.

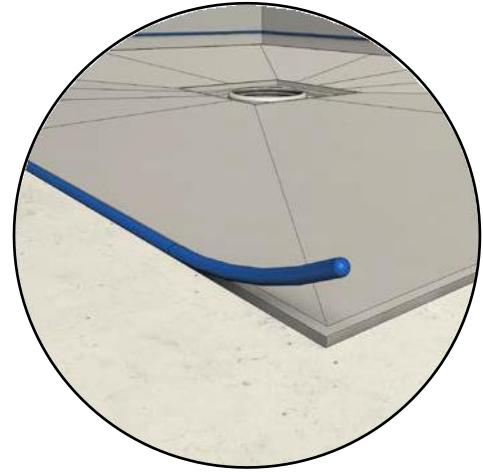
## SECTION 10 | SOUNDDOWN™ ENDURABASE™ INSTALLATION



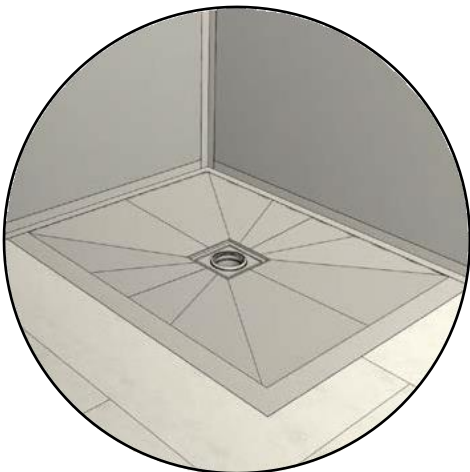
- Prepare PAB battens to suit length and width of Shower Tray Module; see construction details for dimensions.
- Install PAB battens hard up against Expansion Joint Foam Tape.



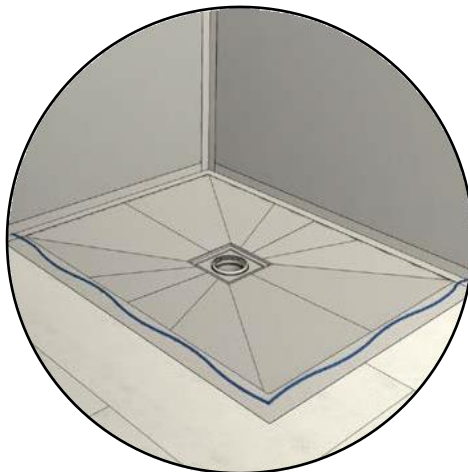
- Install Maglok Dragonboard 20mm; see pages 13 to 15 for construction details and installation procedure.
- Allow for 6mm gap between Maglok Dragonboard panels and Shower Tray Module.



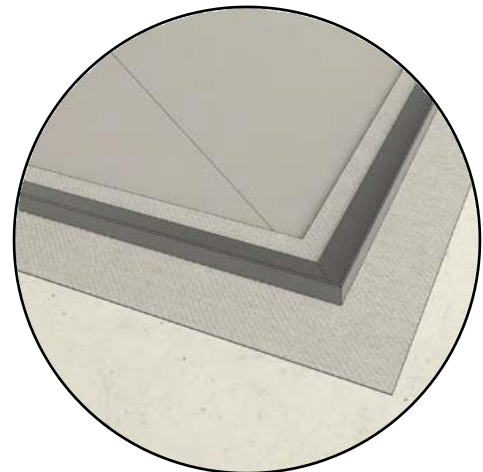
- Seal the gap between the Shower Tray Module and Maglok Dragonboard entirely with Flexible Joint Sealant until it reaches the Expansion Joint Foam Tape.



- Start waterproofing on the floor by applying a 75mm waterproofing tape along the Shower Tray Module and Maglok Dragonboard junction, ensuring equally distant on both sides of the joint.
- After the floor is taped, Tape the floor-to-wall junctions followed by internal wall corners.

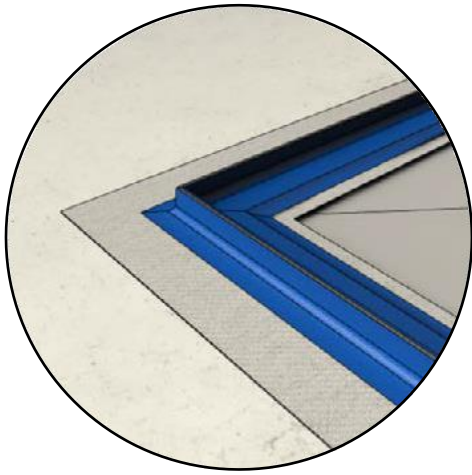


- Measure and mark location for aluminium angle.
- Apply a continuous 6-8mm bead of the waterproof sealant.

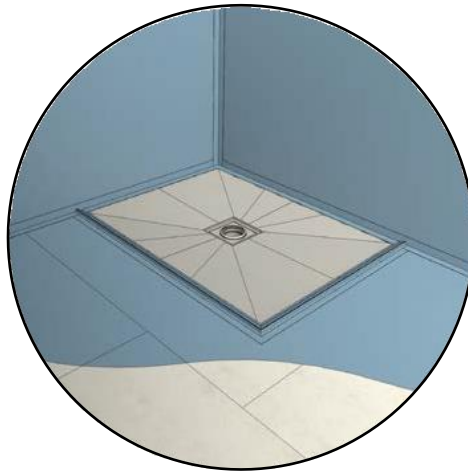


- Place aluminium angles where upstand is flush with the Shower Tray Module edge.
- Seal aluminium angle join at the corner.

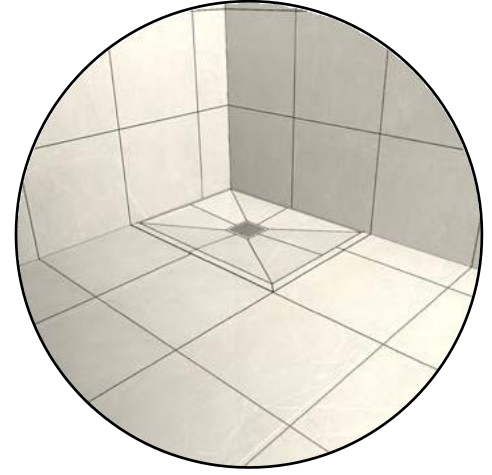
## SECTION 10 | SOUNDDOWN™ ENDURABASE™ INSTALLATION



- Apply Waterproof Sealant generously to create a bond breaker on both sides of the aluminium angle, tool the sealant to create a min. 3-5mm radius.



- Prepare and prime all floors and walls as directed by waterproofing specification.
- Apply liquid waterproof membrane to walls and floors, overlapping the waterproofing tape and aluminium angle by 50mm toward the drain waste.
- Further waterproofing of Shower Tray module is not required.



- Use waterproof sealant instead of grout between the main floor and the Shower Tray Module tile joint.
- Use an epoxy-based tile adhesive for tiling to the Shower Tray Module
- Continue standard tile installation practice.