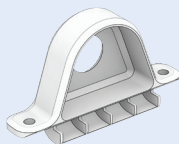


# STRATLOCK SL RANGE

## SL-SMT1 INSTALLATION GUIDE

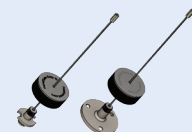
### SL-SMT1 Stratlock® Sidemount - Installation with PanelSafe Easyfit

SL-SMT1



USE WITH:

PS-S150E PS-S150E

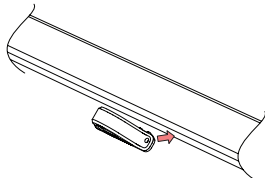


INSTALL WITH:

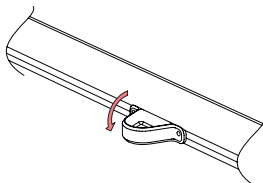
#8 screws

### INSTALLATION STEPS Installation with PanelSafe

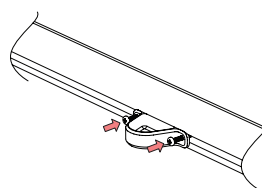
1 Insert SL-SMT1 into SL-RLE



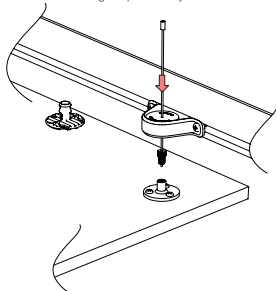
2 Click into place



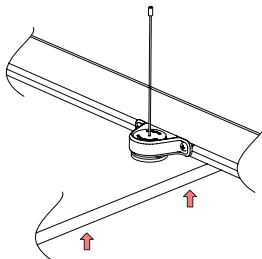
3 Use #8 screws to fix SL-SMT1 into position



4 Pass the PS-150E or PS-S150E through SL-SMT1 and attach to panel with appropriate Stratlock Range clips already installed



5 Clip panel into position



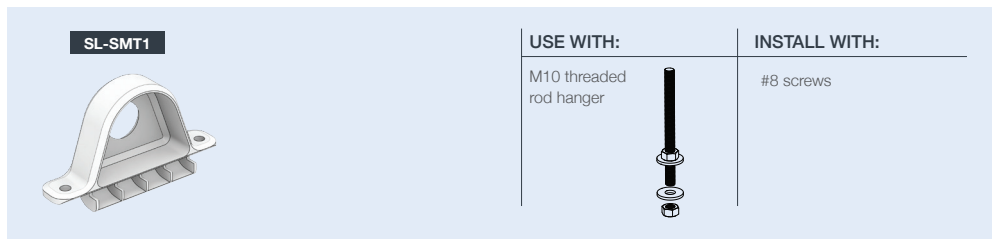
Stratlock SL-RLE shown.

# STRATLOCK SL RANGE

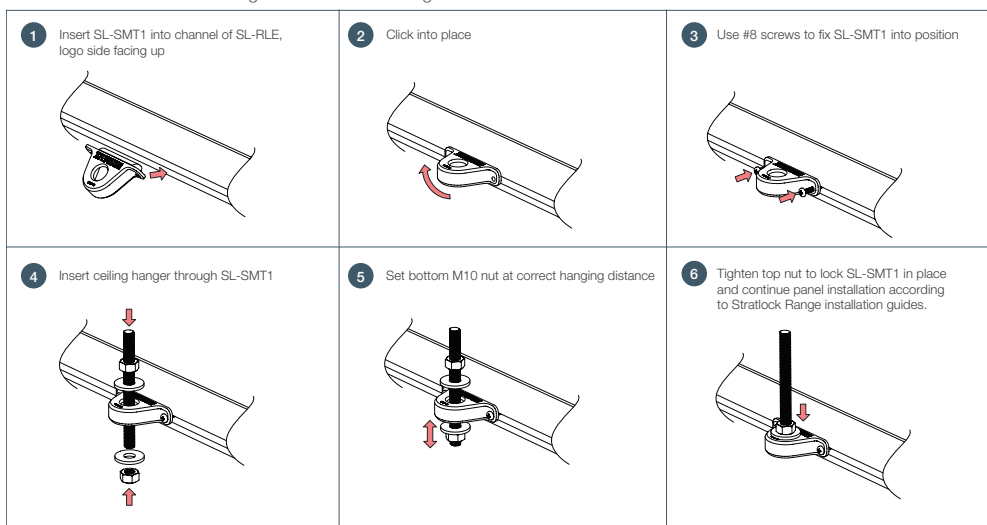
## SL-SMT1 INSTALLATION GUIDE

### SL-SMT1 Stratlock® Sidemount

- Suspension of SL-RLE with M10 threaded rod hanger



#### INSTALLATION STEPS using M10 threaded rod hanger



Stratlock SL-RLE shown.