

RE: E3/AS1 TIMBER & TIMBER-BASED PRODUCTS ALTERNATIVE SOLUTION COMPLIANCE DOCUMENT

E3/AS1 states that an impervious and easily cleaned surface must extend at least 1.5m from any sanitary item within the following listed areas Kitchen, Toilet, Laundry, and Bathroom this must also include perimeter protection from water ingress.

All Woodland Lifestyle's Flooring products feature an impervious and easily cleaned surface layer once installed. All ranges have been independently tested under international standard ISO 4760 by NZWTA, test data available on request.

Surface Layer

The surface layer of our products is made impervious and easily cleaned through a number of methods including heat-cured melamine, PVC and polyurethane resins.

Joint System

Woodland Lifestyle's flooring products utilise a number of world-leading locking systems including the Unilin [Uniclic system](#) and [I4F's drop-lock technology](#). The locking systems are highly engineered to provide an extremely tight glueless joint that inhibits any ingress of moisture without the need for additional sealing. This provides splash protection

In-Service History

Woodland Lifestyle's product have many years of in-service history being installed around sanitary items and have performed without issue.

Perimeter Splash Protection

To protect the perimeters from moisture ingress our floor installation instructions specifies the foam rod and silicon system. This consists of a foam rod and a flexible transparent silicone and provides the necessary resistance to water ingress around the perimeter.

When installed and maintained as per installation/maintenance instructions shown on our website, Woodland Lifestyle is confident that the above points will allow our products to be used as an 'alternative solution' and meet E3/AS1 requirements.

Attached are the wet area installation instructions which form the basis of the alternative solution along side of the correct product selection

Ambrose Hewetson

Wet area installation document

To comply with NZ building code E3/AS1

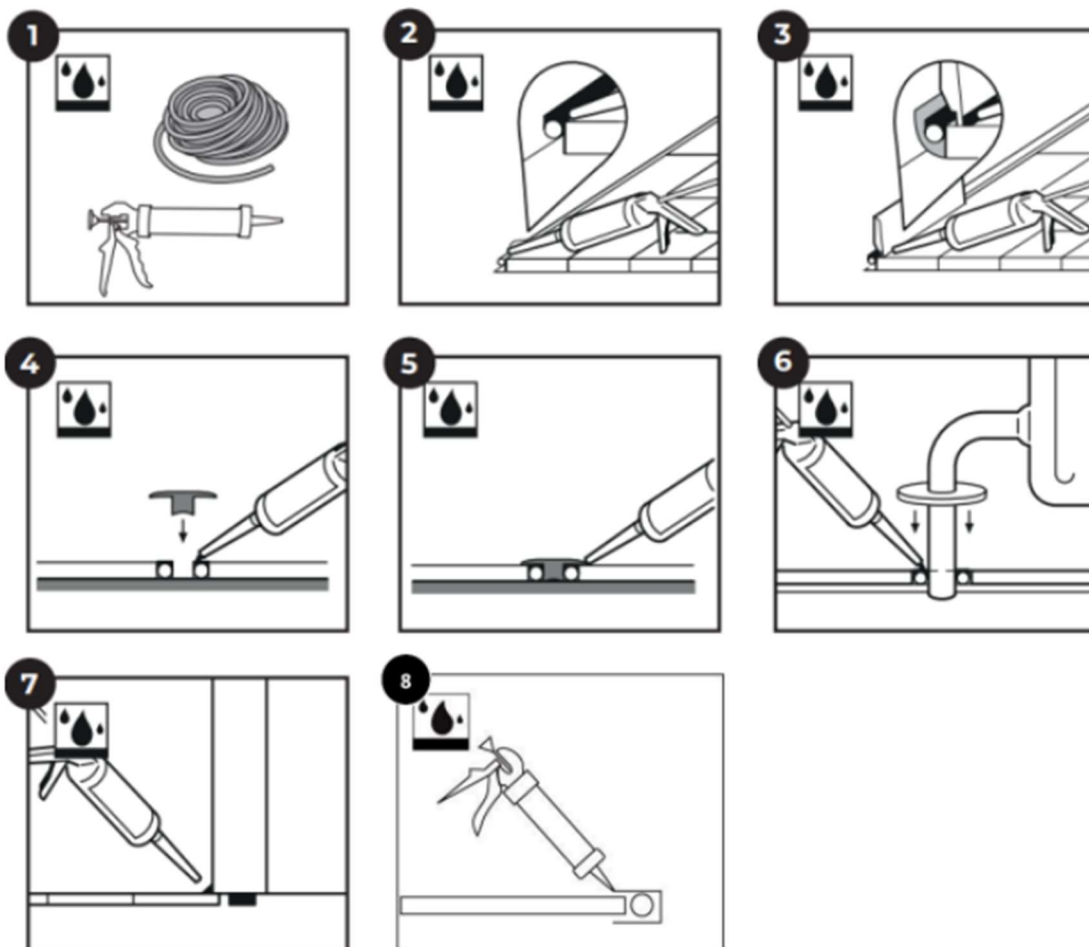
Applicable to all Woodland Lifestyle ranges

- Laminate - Grande Wide, Quattro Vintage, Urban, Magnitude, Style, Euro deluxe, Lungo, Oasis
- Hybrid - Genesis, Strata, Herringbone, Premium Hush, Sentry
- Bamboo

Note - Not bamboo is not suitable for Bathroom and laundry installation. Check specific range instructions to see where the product can be installed. All ranges are suitable for Kitchen installation.

Once your floor is installed, follow the below finishing guidelines to ensure the perimeter of your wet areas are sealed to prevent ingress of moisture. This applies to rooms where sanitary items are present such as kitchens, bathrooms/toilets and laundries.

As per NZBC E3/AS1, the below perimeter finishing installation method must extend at least 1.5m from any sanitary fixture or sanitary appliances, including items such as Dishwashers, Wash tubs, washing machines, etc. In enclosed bathrooms, laundries, and toilet facilities, Woodland Lifestyle recommends sealing the complete perimeter of the room.



1. To protect the perimeters of your floor from water ingress in wet areas a Silicon + Foam rod installation is required, this includes flexible transparent silicon and a PE foam rod.
2. Push the PE foam into 8 – 10mm perimeter expansion gaps, then apply the silicon on a slight angle to the top of the PE foam rod.
3. Install skirting boards and seal the flooring edge of the skirting board with silicone to prevent water ingress.
4. When transition profiles are required install the PE foam rod and silicon in the expansion gap ensuring room is left for the base of the transition profile.
5. Install the expansion profile covering the expansion gap and PE foam rods. Silicon the edges of the profile to prevent water ingress
6. For a great finish around pipes, use pipe covers. Install the PE foam rod and apply silicon in the expansion space before placing the pipe cover on the floor, silicon the edges of the pipe cover to ensure no water ingress.
7. In areas wet areas where kickboards, wall boards, door jambs etc are present apply silicon to the floor edge of the panels to ensure no water ingress underneath.
8. In areas where edges of laminate are exposed e.g., in dishwasher cavities. Prevent water ingress by covering the ends of the laminate using a C channel with a foam rod inside, silicon the edge of the profile to stop water ingress.