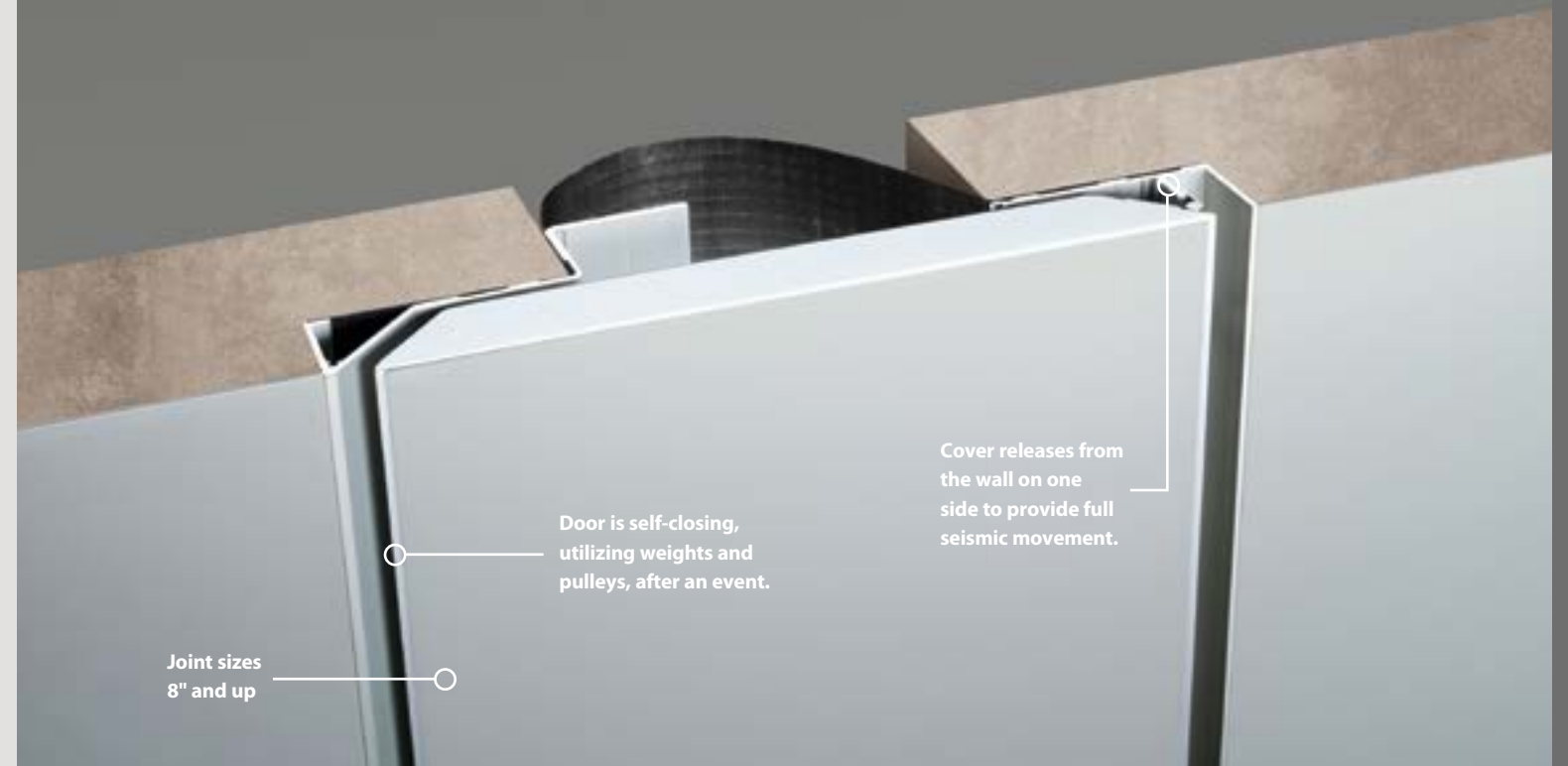
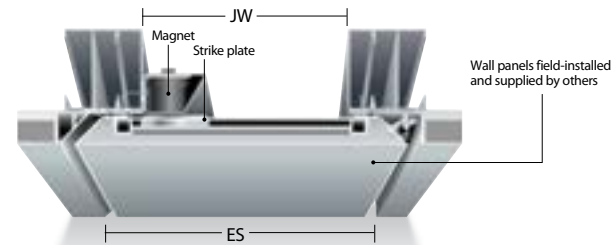


Seismic Exterior Wall Covers 8" and Up

Seismic exterior wall covers allow high ranges of movement while blending with exterior finishes for an unobtrusive look.

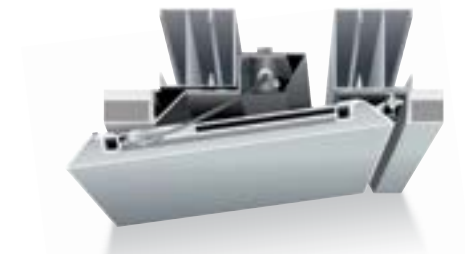


XLS



XLS Contracted

Counterweight cord (magnet not shown)

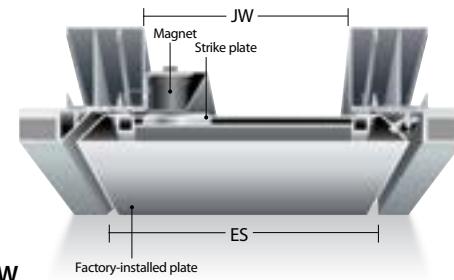


XLS Expanded

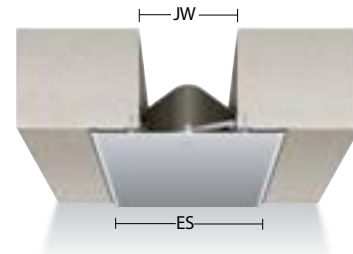
Magnet (counterweight cord not shown)



XLP



ESW



MODEL DATA

EXTERIOR WALL TO WALL COVERS

JOINT WIDTH	8"	10"	12"	14"	16"	4"	8"	12"	16"
MINIMUM OPENING	4.00"	4.00"	4.00"	4.00"	4.00"	2.50"	2.50"	2.50"	2.50"
MAXIMUM OPENING	16.00"	20.00"	24.00"	28.00"	32.00"	6.00"	13.00"	19.00"	25.00"
EXPOSED SURFACE	17.31"	19.31"	21.31"	23.31"	25.31"	12.00"	18.00"	24.00"	30.00"
SPECIFY MODEL	XLS/XLP 800	XLS/XLP 1000	XLS/XLP 1200	XLS/XLP 1400	XLS/XLP 1600	ESW 400	ESW 800	ESW 1200	ESW 1600

EXTERIOR CORNER WALL COVERS

JOINT WIDTH	8"	10"	12"	14"	16"	4"	8"	12"	16"
MINIMUM OPENING	4.00"	4.00"	4.00"	4.00"	4.00"	3.25"	5.25"	7.25"	8.75"
MAXIMUM OPENING	16.00"	20.00"	24.00"	28.00"	32.00"	6.50"	10.50"	15.50"	20.50"
EXPOSED SURFACE	13.00"	15.00"	17.00"	19.00"	21.00"	8.00"	13.00"	18.00"	23.00"
SPECIFY MODEL	XLSC/XLPC 800	XLSC/XLPC 1000	XLSC/XLPC 1200	XLSC/XLPC 1400	XLSC/XLPC 1600	ESC 400	ESC 800	ESC 1200	ESC 1600

For odd and larger sized joints, call 800.233.8493 or visit www.c-sgroup.com/ejc.

For comprehensive information on these products, visit www.c-sgroup.com/ejc.