



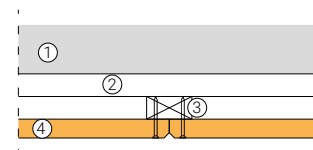
Impact resistance

Certificate no. 332600

False ceiling with CELENIT ABE 25 mm thick, ball impact resistant according to EN 13964/Attached D - DIN 18032/Part 3 standards

	Type of board	Structure	Certificate ¹ No. / Date	Standard	Results
	CELENIT ABE Thickness: 25 mm Dimensions: 1200x600 mm Edges: Chamfered - S4	Wooden battens size 60x30 mm Distance between centers of cross laths: 600 mm Distance between centers of main laths: 900 mm Number of screws per board: 9	332600 31.03.2016	EN 13964	Class 1A
				DIN 18032-3	Visual examination Pass

¹ The certificate is based on tests carried out at the Giordano Institute (Bellaria - RN - Italy)



- ① support
- ② main laths
- ③ cross laths
- ④ CELENIT ABE

Description

CELENIT ABE boards dimensions 1200x600 mm, 25 mm thick, with chamfered edges on 4 sides (code S4) with staggered laying on the short side. Boards are optionally painted and directly fixed to the cross wood laths, section 60x30 mm, placed orthogonally with a distance between centers of 600 mm. Cross wood laths are supported by main wood laths, section

60x30 mm, placed orthogonally with a distance between centers of 900 mm. The boards are fixed on the underside to the cross wood laths using self-tapping screws, diameter 3.5 mm and spacing 300x600 mm (9 screws per board).

Classification: **CLASS 1A**

Test results

Impacts	Impact angle	Nominal velocity [m/s]	Visual examination ¹	Class
12	90°	16.5 ± 0.8	No deformation and/or change	1A
12	60°		No deformation and/or change	1A
12	60° (opposite direction)		No deformation and/or change	1A

¹ As specified by clause D.6 "Evaluation" of EN 13964:2014 standard



CELENIT S.p.A.
Thermal and acoustic insulation panels for a sustainable architecture

Registered office:
Via Bellinghiera, 17
35019 Onara di Tombolo (PD) Italy
PIVA/C.F.: 00211210281

Contact:
Ph. +39.049.5993544
techsupport@celenit.com
www.celenit.com