



KATT[®]

LADDER SUPPORT BRACKET

SAYFA[®] 1300 301 755
PROTECT SAYFA.COM.AU

POSITIVE LADDER STABILITY
ENSURES USER CONFIDENCE
AND SAFETY

- Slotted locking device allows on site pitch and angle adjustment
- Fixing slots ensure easy attachment to structure
- Heavy duty industrial grade construction
- High visibility allows quick ladder attachment

**PRODUCT
SPECIFICATION**

PRODUCT CODE
- LD401
- LD402

DESCRIPTION
**KATT LADDER
SUPPORT BRACKET**

PRODUCT
BROCHURE



TECHNICAL SPECIFICATION

CODE LD401, LD402
DESCRIPTION KATT FIXED LADDER SYSTEM
SPECIFICATION SUMMARY System design, supply, layout, installation and certification by a Sayfa accredited installer, as per the manufacturer's, installation instructions and current standards.

TECHNICAL DATA

MATERIALS

- Profiled stainless steel

DIMENSIONS

- LD401 Wall mount - 480mm (W) x 160mm (D) x 240mm (H)
- LD402 Gutter/Parapet mount - 480mm (W) x 480mm (D) x 70mm (H)

WEIGHT

- Wall mount - 2.30kg
- Gutter/Parapet mount - 3.70kg

FIXINGS

- Timber fixing - 14g/type 17 tek screw x 4
- Metal fixing - 8mm bulb tite rivet x 6 OR 14g into structure x 4
- Concrete fixing - 8mm x 75 screw bolt x 3 OR wedge type anchor x 3
- Steel structure - 8mm bolt set x 3

WORKING LOAD LIMIT
 Recommended for single person use with approved portable ladder max user weight 120kg.

Support structure integrity, suitability and fixing method to be assessed and determined by a competent person prior to installation.

COMPLIANCE Installation, certification, maintenance and usage of ladder to be in accordance with relevant statutory OH&S Codes of Practice Guidelines and manufacturer's recommendation. Refer instruction manual for detailed instructions and recommendations.

TESTING Testing and performance based on single person use (max 120kg) using an Australian Standards approved portable ladder.

PRODUCT WARRANTY 10 years from date of purchase subject to correct installation, use and maintenance in accordance with manufacturer's specifications and recommendations. Excludes powder coating.

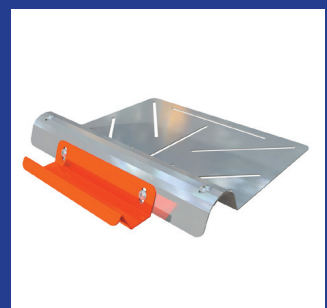
INSPECTION AND MAINTENANCE Visual inspection for any damage or loose fixings must be done periodically and prior to installation. No certified maintenance required. Basic wear and tear preventive maintenance is recommended, as per manufacturer's specifications and recommendations. (Refer instruction manual.)

IMPORTANT NOTE Failure to supply and/or install proprietary product in accordance with above standards and codes, specifications and instructions voids complete system certification and/or warranty.

Designed and manufactured by Sayfa Group. For all technical assistance contact Sayfa Group. SAYFAGROUP-16.11.2017



LD401 - WALL MOUNT



LD402 -GUTTER / PARAPET MOUNT

DISCLAIMER

All product specifications and technical descriptions, recommendations and other information provided, are given as general guidance and advice, and are to be read in conjunction with Sayfa Group installation instructions and any other data available and applicable to each particular standard product or system. Use of such data is however the user's sole responsibility, taking into account the intended application and actual conditions existing on the particular work site. Consequent selection of the right product for any particular use, remains the user's ultimate responsibility. Sayfa Group is therefore not obligated or liable for any direct or indirect, incidental or consequential damages, losses or expenses in connection with, or by reason of the suitability and use of or otherwise, any product or system for any purpose. Implied warranties of merchantability or fitness for any particular purpose, are specifically excluded.

All Sayfa Group products must be installed and used by competent personnel trained in the selection, safe use and maintenance of fall arrest systems and equipment by a registered training organization (RTO) Installation not in accordance with Sayfa Group requirements or the use of non Sayfa Group components will void all certification and warranties.

Suitability of support structure and design layout of system is the responsibility of the installer and should be verified by a structural engineer or a site specific live load test done to ensure conformance. Maintenance and usage of the system in accordance with Sayfa Group requirements is the responsibility of the owner or manager of the workplace.

Sayfa Group maintains a policy of continuous improvement and development, and therefore reserves the right to modify, amend or otherwise alter product and system designs and specifications, models and part numbers, colors and pricing etc without prior notice. Errors and omissions are excepted, and Sayfa Group accepts no liability for incorrect information, errors or omissions.

Distributor:



0508 4 CAMEL (0508 4 22 635)
 heightsystems@camelspace.com
 www.camelspace.com



1029 MOUNTAIN HWY
 BORONIA VIC 3155
 AUSTRALIA

T 1300 301755
 F 1300 881 092
 E INFO@SAYFA.COM.AU

FOR MORE INFORMATION
 VISIT SAYFA.COM.AU

