



Installation Guide

pro clima **TESCON ADHISO WS** Pure Aluminium tape for wet seal connections



WHAT FOR?

- ✓ Wetseal connection between sill tape and joinery

APPLIED TO?

- ✓ SOLITEX EXTASANA®
- ✓ SOLITEX MENTO®
- ✓ TESCO EXTSEAL®
- ✓ TESCO EXTORA®
- ✓ Ecoply® Barrier Sill Tape
- ✓ Ecoply® Barrier Frame Sealing Tape

ADVANTAGES

- ✓ Pure aluminium for wet-sealant adhesion
- ✓ Durable
- ✓ Thin
- ✓ Can be applied to cold surfaces



1

Preparation

Ensure opening is dry and free of dirt, dust, oils and grease



2

Installation of the tape

Install ADHISO WS in appropriate position around the full perimeter of the opening



3

After joinery is installed

Apply PEF rod from the inside of the window to the full perimeter

internal

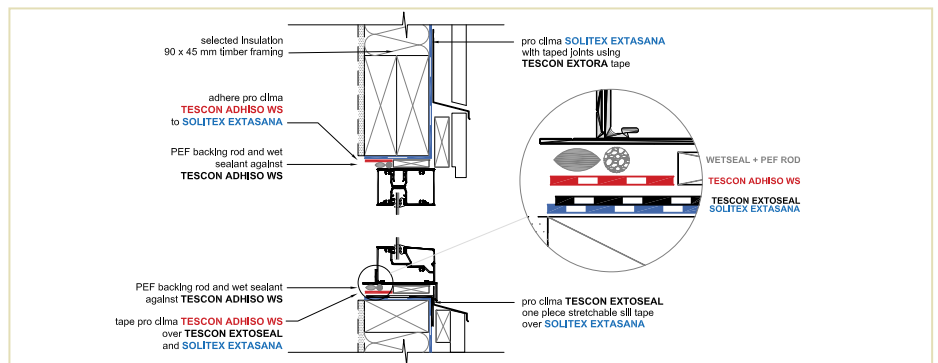


4

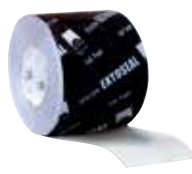
Apply wetseal sealant

Apply to full perimeter of opening

internal



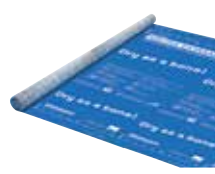
TESCON ADHISO WS
Pure Aluminium tape for wet seal connections



TESCON EXTSEAL
Sill Tape



TESCON EXTORA
Weathertight Sealing Tape



SOLITEX EXTASANA
Wall Protection Membrane

If you have any questions, please call our technical hotline

Pro Clima New Zealand Ltd
PO Box 925
CBD
Wellington 6140
Phone: 0800 PRO CLIMA (0800 776 254)
Email: welcome@proclima.co.nz

www.proclima.co.nz

Pro Clima Australia Pty Ltd
PO Box 924
Gosford
NSW 2250
Phone: 1800 PRO CLIMA (1800 776 254)
Email: welcome@proclima.com.au

www.proclima.com.au

Note: please contact pro clima for test documentation from wet sealant providers