

# COVER SHEET

File - KS1000 RW_STD WALL_HORIZONTAL Q4_2023				
DATE	DETAIL NAME	DRG_REF	REVISION	APPROVED
09.10.23	COVER SHEET	RW_HS_01	-	JS
09.10.23	PANEL DIMENSIONS	RW_HS_02	-	JS
09.10.23	PRIMARY FIXING LOCATIONS	RW_HS_03	-	JS
09.10.23	BASE DETAILS_1	RW_HS_04	-	JS
09.10.23	BASE DETAILS_2	RW_HS_05	-	JS
09.10.23	BASE DETAILS_3	RW_HS_06	-	JS
09.10.23	BASE DETAILS_4	RW_HS_07	-	JS
09.10.23	BASE DETAILS_5	RW_HS_08	-	JS
09.10.23	BASE DETAILS ON PRECAST WALL_1	RW_HS_09	-	JS
09.10.23	BASE DETAILS ON PRECAST WALL_2	RW_HS_10	-	JS
09.10.23	BASE DETAILS ON PRECAST_3	RW_HS_11	-	JS
09.10.23	EXTERNAL CORNER - DETAIL_1	RW_HS_12	-	JS
09.10.23	EXTERNAL CORNER - DETAIL_2	RW_HS_13	-	JS
09.10.23	INTERNAL CORNER DETAIL_2	RW_HS_14	-	JS
09.10.23	INTERNAL CORNER DETAIL_2	RW_HS_15	-	JS
09.10.23	ABUTMENTS TO CONCRETE	RW_HS_16	-	JS
09.10.23	ABUTMENTS TO CONCRETE	RW_HS_17	-	JS
09.10.23	TOPHAT JOIN DETAIL_1	RW_HS_18	-	JS
09.10.23	TOPHAT JOIN DETAIL_2	RW_HS_19	-	JS
09.10.23	INTERNAL PARTITION WALL ABUTS PANEL	RW_HS_20	-	JS
09.10.23	RW HORIZONTAL TO VERTICAL BREAK DETAIL	RW_HS_21	-	JS
09.10.23	HORIZONTAL WINDOW DETAIL	RW_HS_22	-	JS
09.10.23	PERSONNEL DOOR DETAIL	RW_HS_23	-	JS
09.10.23	OVERHEAD DOOR DETAIL	RW_HS_24	-	JS
09.10.23	LOUVRE DETAIL	RW_HS_25	-	JS
09.10.23	EAVES GUTTER DETAIL	RW_HS_26	-	JS
09.10.23	EAVES GUTTER DETAIL - RAB BOARD	RW_HS_27	-	JS
09.10.23	EAVES GUTTER DETAIL - BUILDING WRAP	RW_HS_28	-	JS
09.10.23	KS1100 CS GUTTER, KS1000 RW ROOF & HORIZONTAL PARAPET WALL	RW_HS_29	-	JS
09.10.23	VERGE OVERHANG	RW_HS_30	-	JS
09.10.23	PRECAST WALL - EXTERNAL CORNER_1	RW_HS_31	-	JS
09.10.23	PRECAST WALL - EXTERNAL CORNER_2	RW_HS_32	-	JS
09.10.23	PIPE PENETRATION DETAIL	RW_HS_33	-	JS
09.10.23	PIPE PENETRATION DETAIL	RW_HS_34	-	JS
09.10.23	PIPE SUPPORT DETAIL HORIZ. SECTION	RW_HS_35	-	JS
09.10.23	SIGNAGE SUPPORT DETAILS VERT. SECTION	RW_HS_36	-	JS

## DISCLAIMER

These details are provided as a guideline for correct panel and associated component installation, which are based on industry accepted practices.

The location of the vapour barrier and associated sealants in these details are for typical "ambient" installations. Contact Kingspan Technical for specific detailing for low temp, high humidity or fire detailing.

All structural supports are 'not by Kingspan'. They are shown for clarification and illustrative purposes only.

Refer the product data sheet for maximum panel spans based on the project specific design loads as determined by the project engineer.

Cold rolled steel sections are shown on these details however hot rolled or timber can be substituted.

The number of fixings on any detail is an indication only, the actual number required is project specific and need to be calculated based on project specific conditions. Refer to the project engineer.

These details are subject to change at anytime. Please refer to the Kingspan NZ website or Kingspan Technical for the latest version.

SYSTEM KS1000 RW_STD WALL_HORIZONTAL Q4_2023		
DESCRIPTION COVER SHEET		
APPROVED BY JS	DATE 09.10.23	REVISION -
DRG REF: RW_HS_01	SCALE 1:1	PAPER SIZE A4

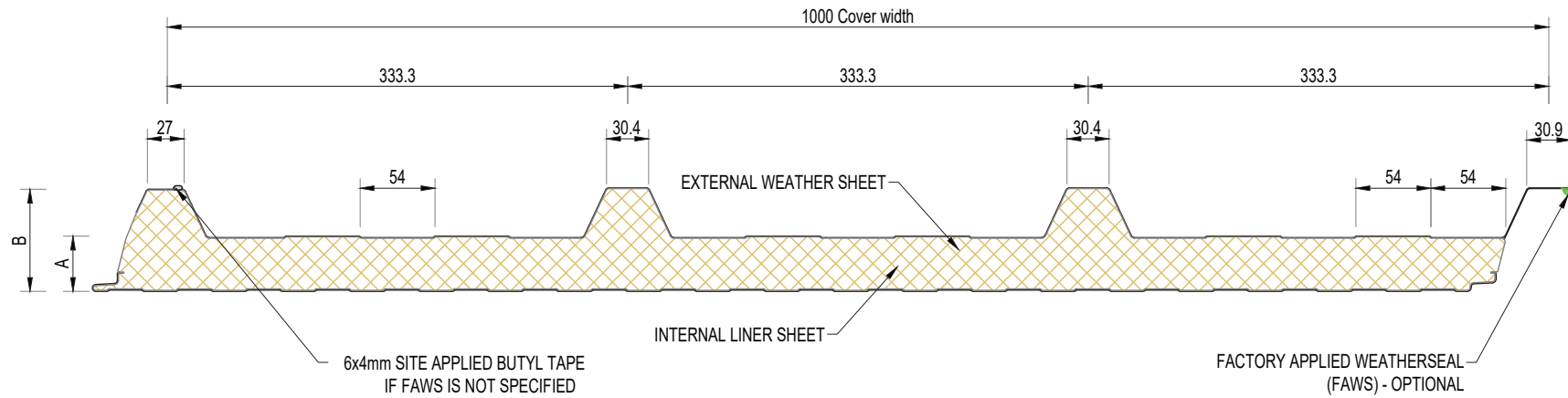
This document remains the property of Kingspan Ltd under copyright laws. Licence is granted to use this document and its contents in connection with Kingspan Ltd products only.  
©Kingspan Ltd

DO NOT SCALE. IF IN DOUBT ASK



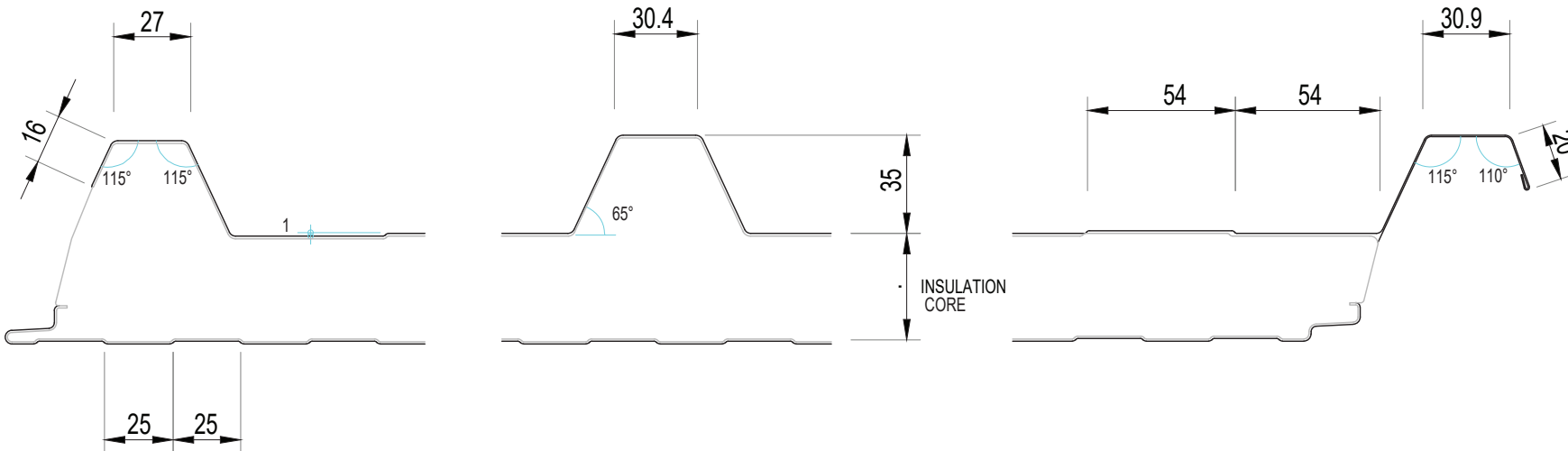
New Zealand: Kingspan Ltd  
97 Montreal St, Christchurch, Tel: 03 260 5530, Freephone: 0800 121280  
email: info@kingspanpanels.co.nz, www.kingspanpanels.co.nz

# PANEL DIMENSIONS



NOTE: ABOVE DIMENSIONS ARE NOMINAL, ACTUAL DIMENSIONS WILL VARY DUE TO MANUFACTURING TOLERANCES. EXACTLY PRECISE DIMENSIONS MUST ALWAYS BE MEASURED FROM ACTUAL SAMPLES ALL DIMENSIONS IN MILLIMETRES.

Product Tolerances	
Length < 3 m	±5 mm
Length > 3 m	±10 mm
Cover Width	±2 mm
Thickness < 100 mm	±2 mm
Thickness > 100 mm	±2%
Squareness	≤0.6% of width



SYSTEM KS 1000 RW STD WALL_HORIZONTAL Q4_2023		
DESCRIPTION PANEL DIMENSIONS		
APPROVED BY JS	DATE 09.10.23	REVISION -
DRG REF: RW_HS_02	SCALE 1:5	PAPER SIZE A4

This document remains the property of Kingspan Ltd under copyright laws. Licence is granted to use this document and its contents in connection with Kingspan Ltd products only.  
©Kingspan Ltd

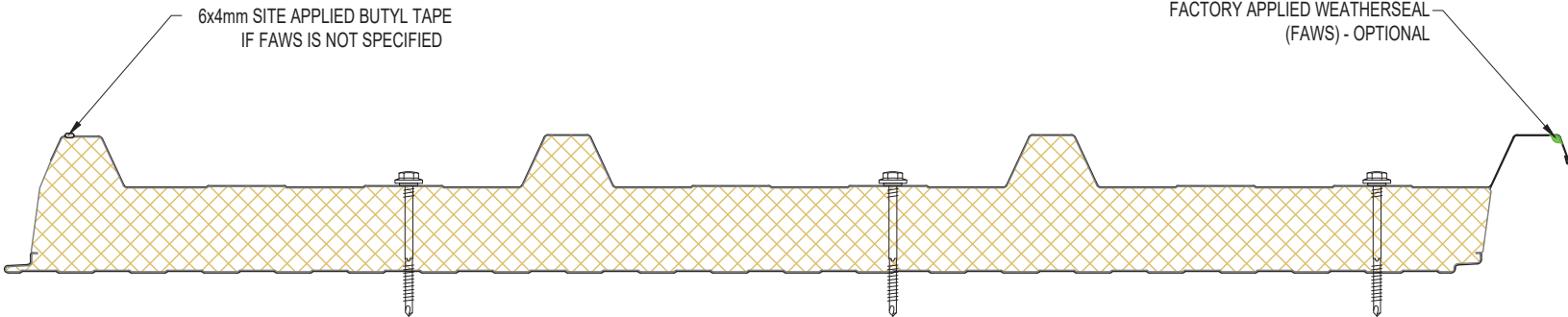
DO NOT SCALE. IF IN DOUBT ASK

New Zealand: Kingspan Ltd  
97 Montreal St, Christchurch, Tel: 03 260 5530, Freephone: 0800 121280  
email: info@kingspanpanels.co.nz www.kingspanpanels.co.nz

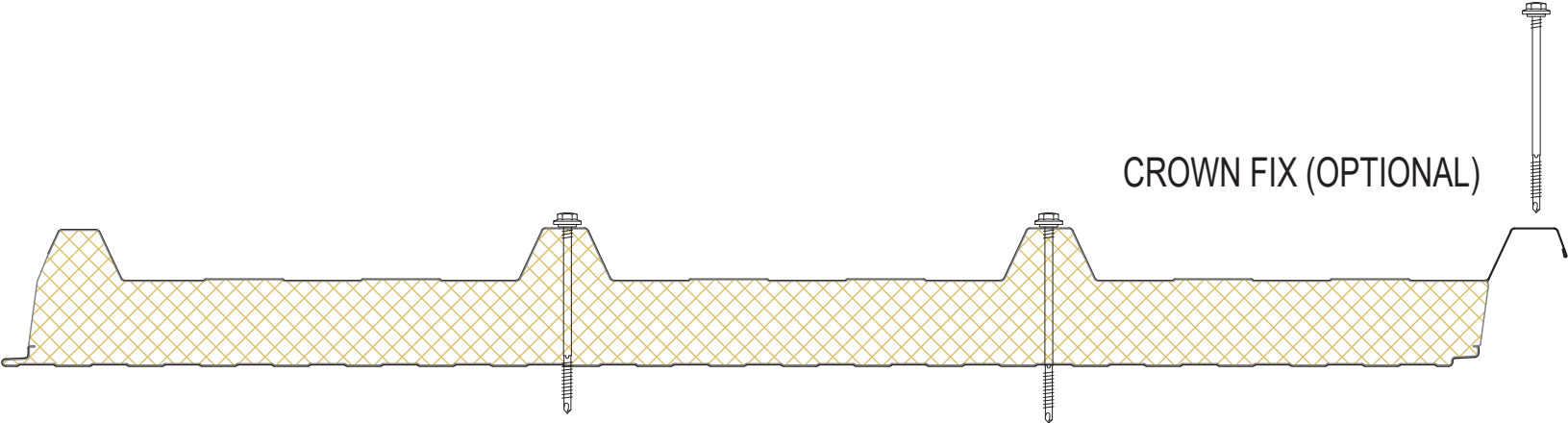
AVAILABLE PANEL THICKNESSES						
A- Core Thickness (mm)	40.00	60.00	70.00	100.00	120.00	140.00
B- Overall Dimension (mm)	75.00	95.00	105.00	135.00	155.00	175.00

# PRIMARY FIXING LOCATIONS

THE NUMBER OF FIXINGS & FIXING TYPE TO BE DETERMINED BY THE DESIGNER. REFER FIXING MANUFACTURER FOR FIXING INTO LIGHT STEEL, HEAVY STEEL OR TIMBER. MINIMUM WASHER SIZE TO BE 19mm. FASTENERS TO BE CLASS 4 OR BETTER.



VALLEY (WALL PANELS)



CROWN FIX (OPTIONAL)

KS1000 RW WALL PANEL PRIMARY FIXING LOCATIONS.  
HORIZONTALLY OR VERTICALLY LAID

SYSTEM KS1000 RW_STD WALL_HORIZONTAL Q4_2023		
DESCRIPTION PRIMARY FIXING LOCATIONS		
APPROVED BY JS	DATE 09.10.23	REVISION -
DRG REF: RW_HS_03	SCALE 1:5	PAPER SIZE A4

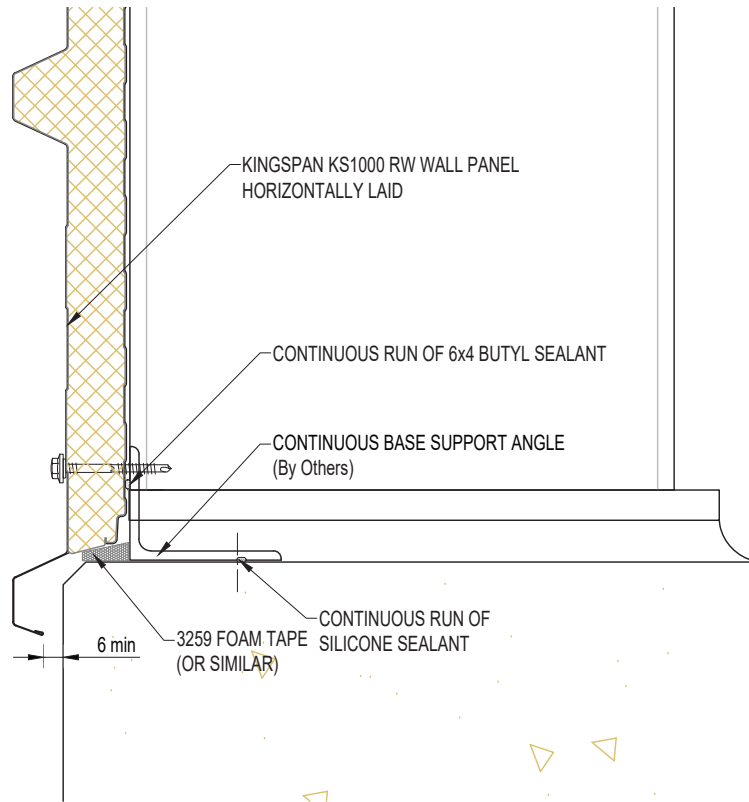
This document remains the property of Kingspan Ltd under copyright laws. Licence is granted to use this document and its contents in connection with Kingspan Ltd products only.  
©Kingspan Ltd

DO NOT SCALE. IF IN DOUBT ASK

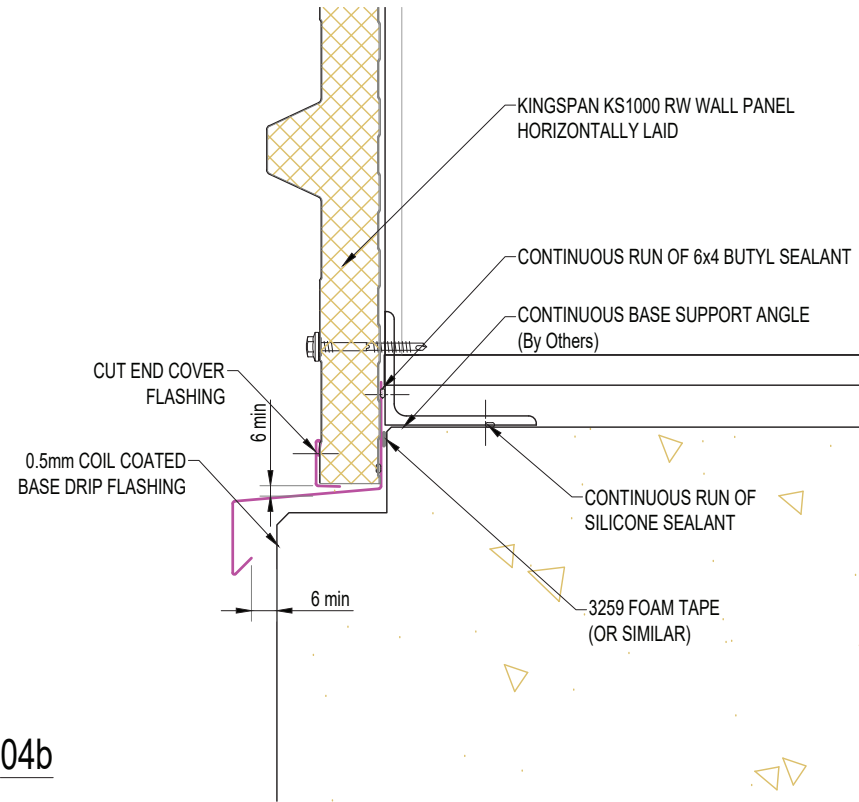


New Zealand: Kingspan Ltd  
97 Montreal St, Christchurch, Tel: 03 260 5530, Freephone: 0800 121280  
email: info@kingspanpanels.co.nz, www.kingspanpanels.co.nz

# BASE DETAILS\_1



04a



04b

SYSTEM KS1000 RW_STD WALL_HORIZONTAL Q4_2023		
DESCRIPTION BASE DETAILS_1		
APPROVED BY JS	DATE 09.10.23	REVISION -
DRG REF: RW_HS_04	SCALE 1:5	PAPER SIZE A4

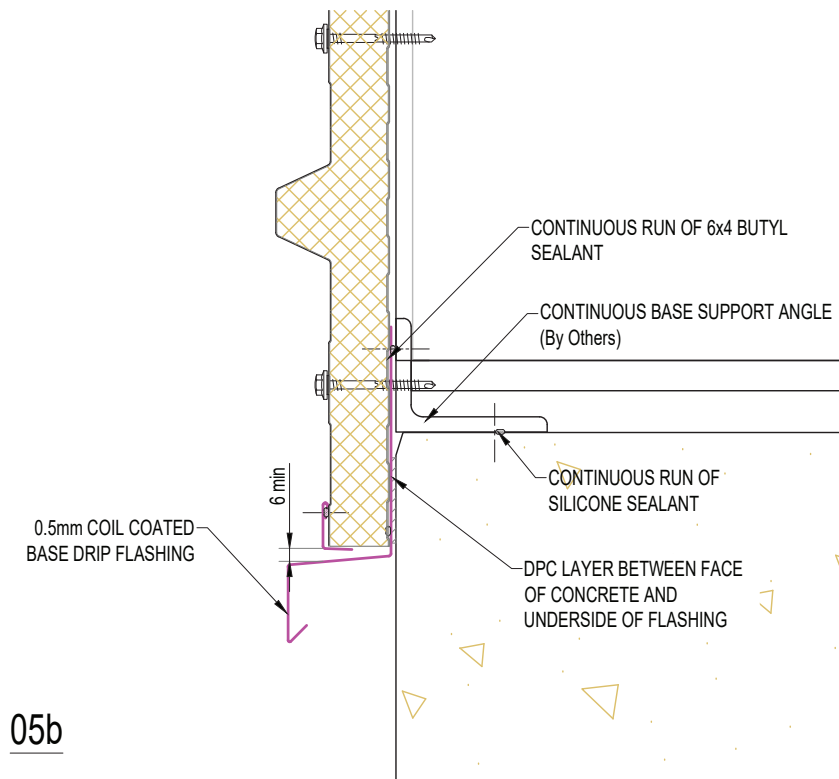
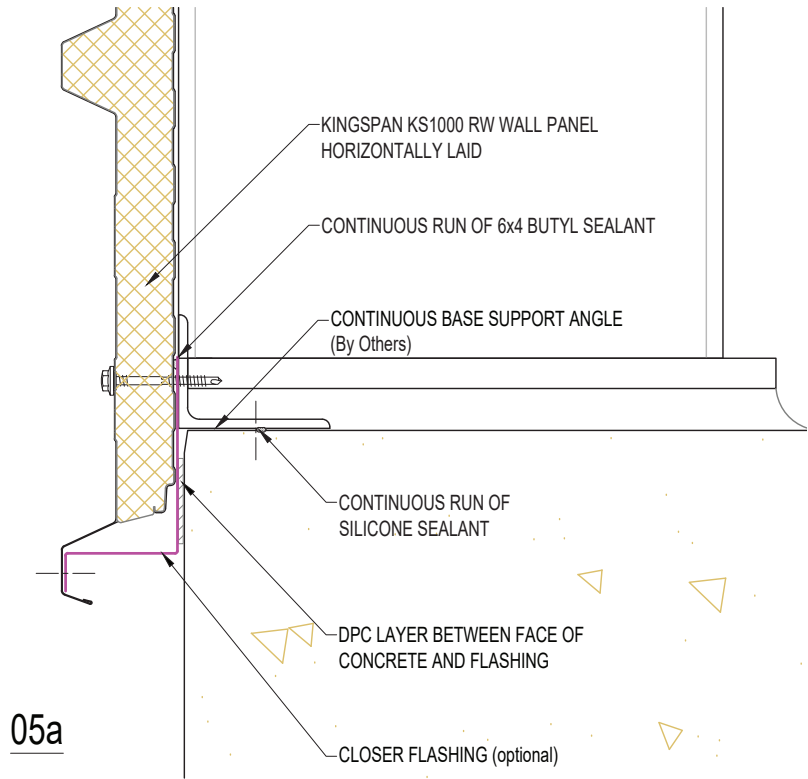
This document remains the property of Kingspan Ltd under copyright laws. Licence is granted to use this document and its contents in connection with Kingspan Ltd products only.  
©Kingspan Ltd

DO NOT SCALE. IF IN DOUBT ASK



New Zealand: Kingspan Ltd  
97 Montreal St, Christchurch, Tel: 03 260 5530, Freephone: 0800 121280  
email: info@kingspanpanels.co.nz, www.kingspanpanels.co.nz

# BASE DETAILS\_2



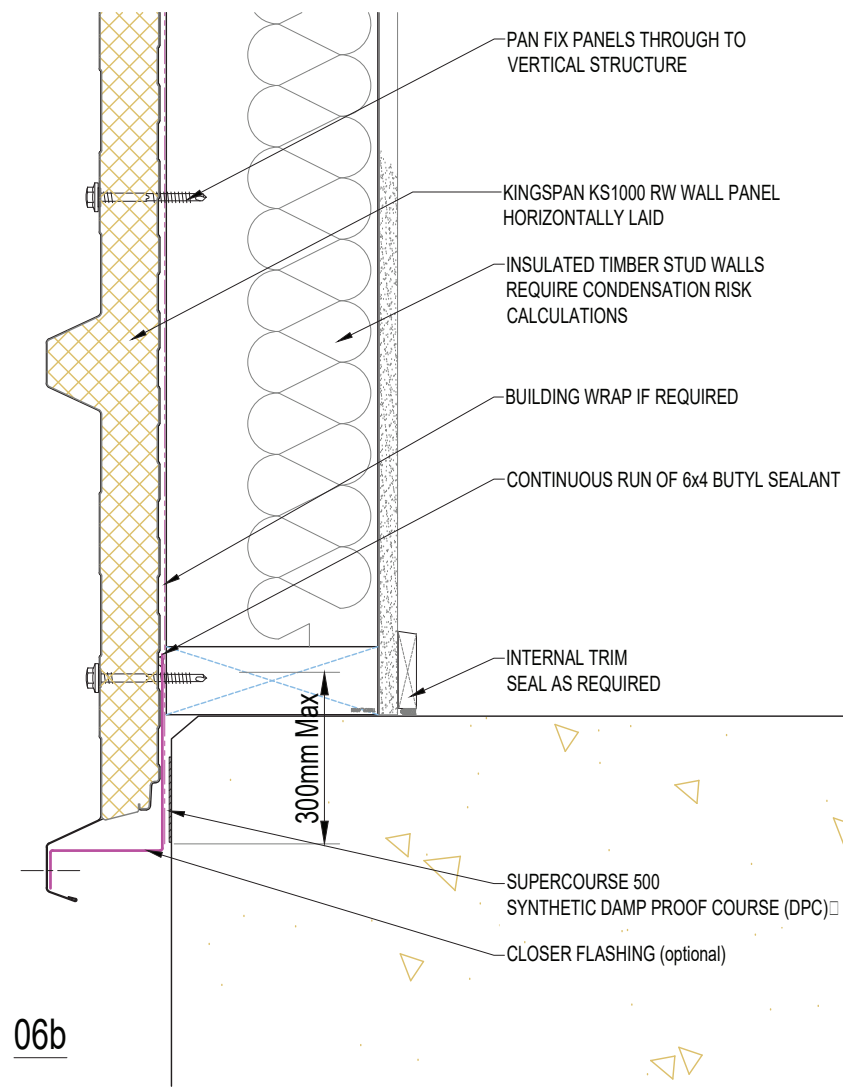
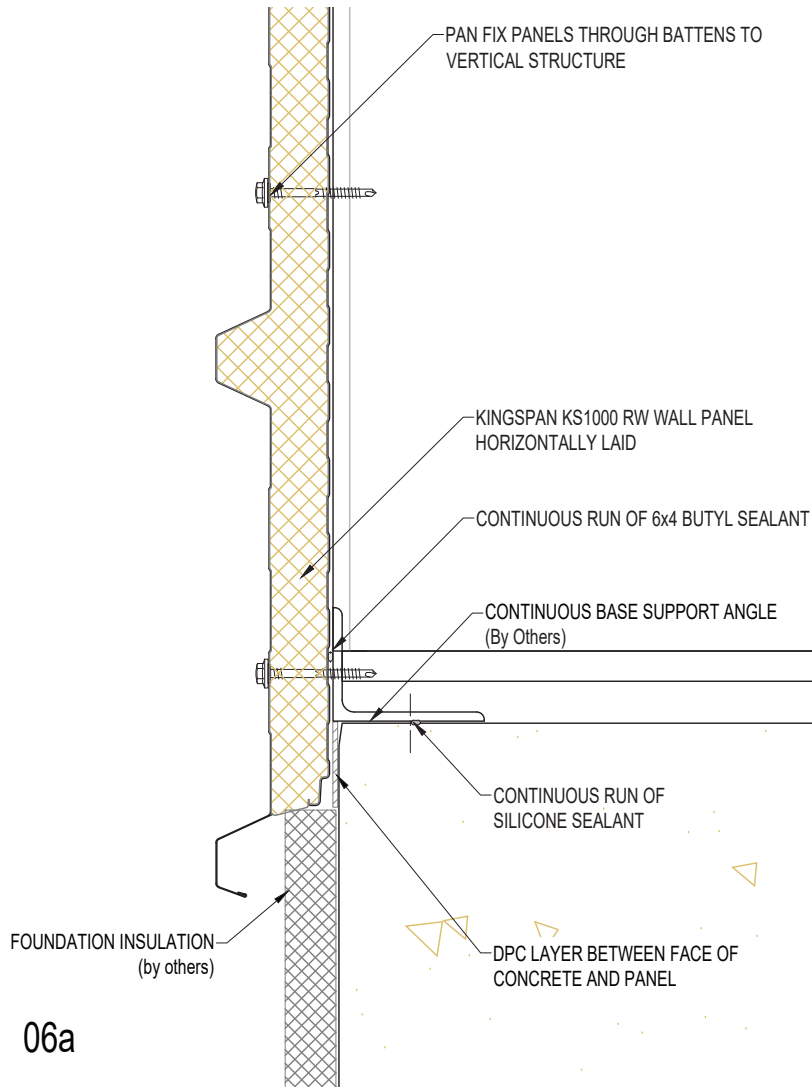
SYSTEM KS1000_RW_STD_WALL_HORIZONTAL_Q4_2023		
DESCRIPTION BASE DETAILS_2		
APPROVED BY JS	DATE 09.10.23	REVISION -
DRG REF: RW_HS_05	SCALE 1:5	PAPER SIZE A4

This document remains the property of Kingspan Ltd under copyright laws. Licence is granted to use this document and its contents in connection with Kingspan Ltd products only.  
©Kingspan Ltd

DO NOT SCALE. IF IN DOUBT ASK

New Zealand: Kingspan Ltd  
97 Montreal St, Christchurch, Tel: 03 260 5530, Freephone: 0800 121280  
email: info@kingspanpanels.co.nz, www.kingspanpanels.co.nz

# BASE DETAILS\_3

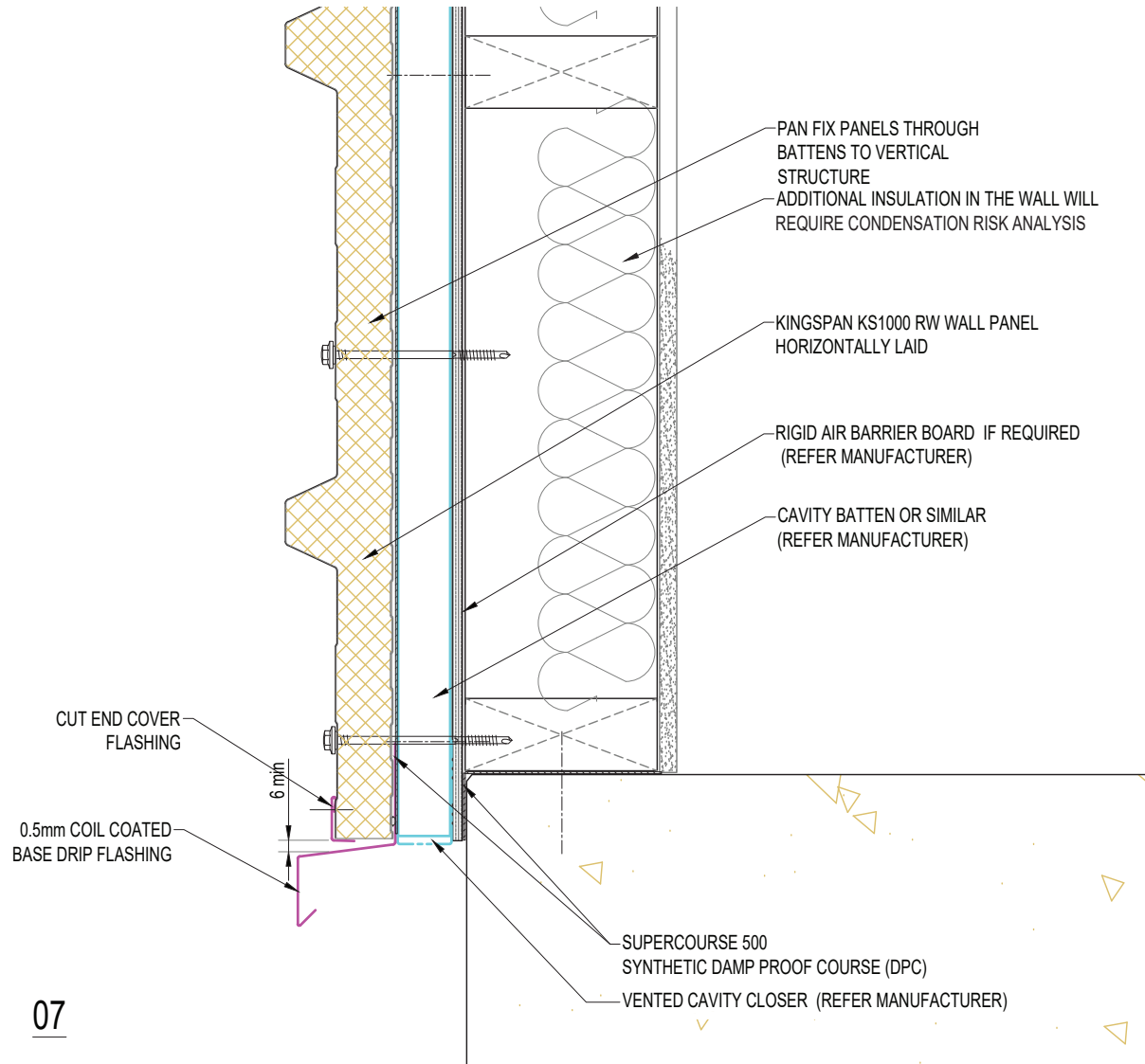


SYSTEM KS1000_RW_STD_WALL_HORIZONTAL_Q4_2023		
DESCRIPTION BASE DETAILS_3		
APPROVED BY JS	DATE 09.10.23	REVISION -
DRG REF: RW_HS_06	SCALE 1:5	PAPER SIZE A4
This document remains the property of Kingspan Ltd under copyright laws. Licence is granted to use this document and its contents in connection with Kingspan Ltd products only. ©Kingspan Ltd		

DO NOT SCALE. IF IN DOUBT ASK

New Zealand: Kingspan Ltd  
97 Montreal St, Christchurch, Tel: 03 260 5530, Freephone: 0800 121280  
email: info@kingspanpanels.co.nz, www.kingspanpanels.co.nz

# BASE DETAILS\_4



07

SYSTEM KS1000_RW_STD WALL_HORIZONTAL Q4_2023		
DESCRIPTION BASE DETAILS_4		
APPROVED BY JS	DATE 09.10.23	REVISION -
DRG REF: RW_HS_07	SCALE 1:5	PAPER SIZE A4

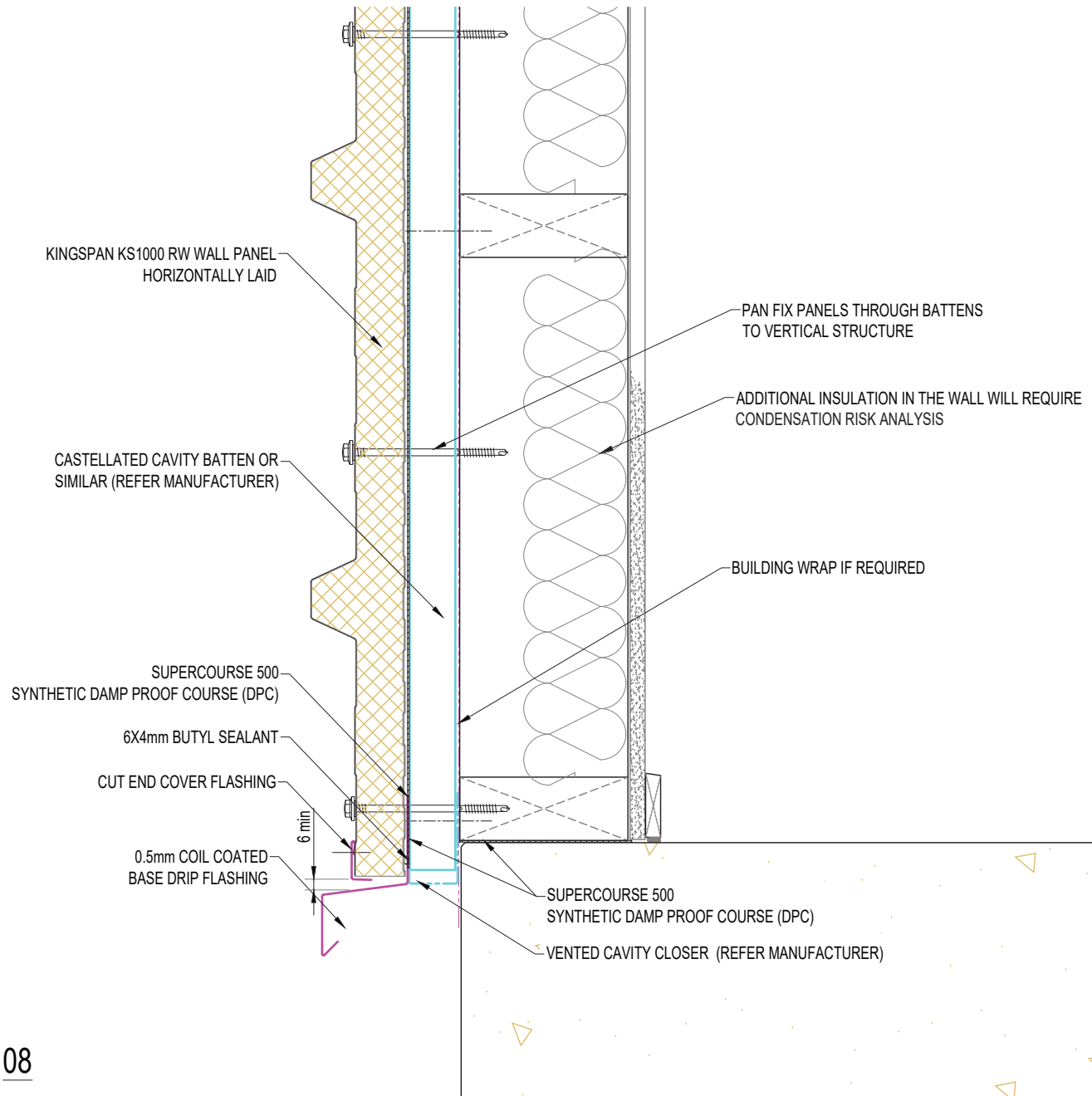
This document remains the property of Kingspan Ltd under copyright laws. Licence is granted to use this document and its contents in connection with Kingspan Ltd products only.  
©Kingspan Ltd

DO NOT SCALE. IF IN DOUBT ASK



New Zealand: Kingspan Ltd  
 97 Montreal St, Christchurch, Tel: 03 260 5530, Freephone: 0800 121280  
 email: info@kingspanpanels.co.nz, www.kingspanpanels.co.nz

# BASE DETAILS\_5



SYSTEM KS1000_RW_STD_WALL_HORIZONTAL_Q4_2023		
DESCRIPTION BASE DETAILS_5		
APPROVED BY JS	DATE 09.10.23	REVISION -
DRG REF: RW_HS_08	SCALE 1:5	PAPER SIZE A4

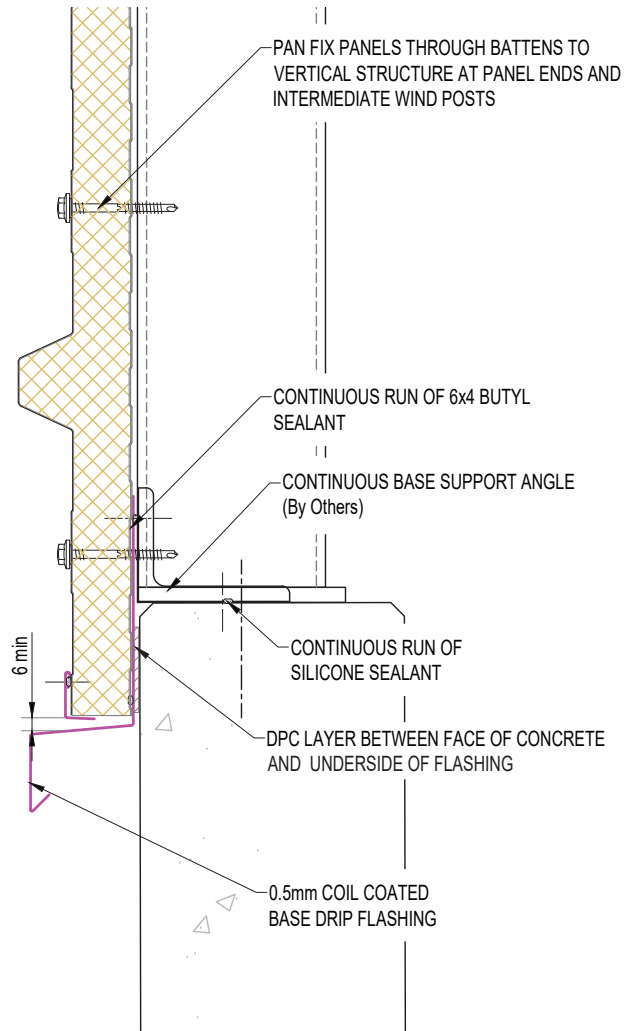
This document remains the property of Kingspan Ltd under copyright laws. Licence is granted to use this document and its contents in connection with Kingspan Ltd products only.  
©Kingspan Ltd

DO NOT SCALE. IF IN DOUBT ASK

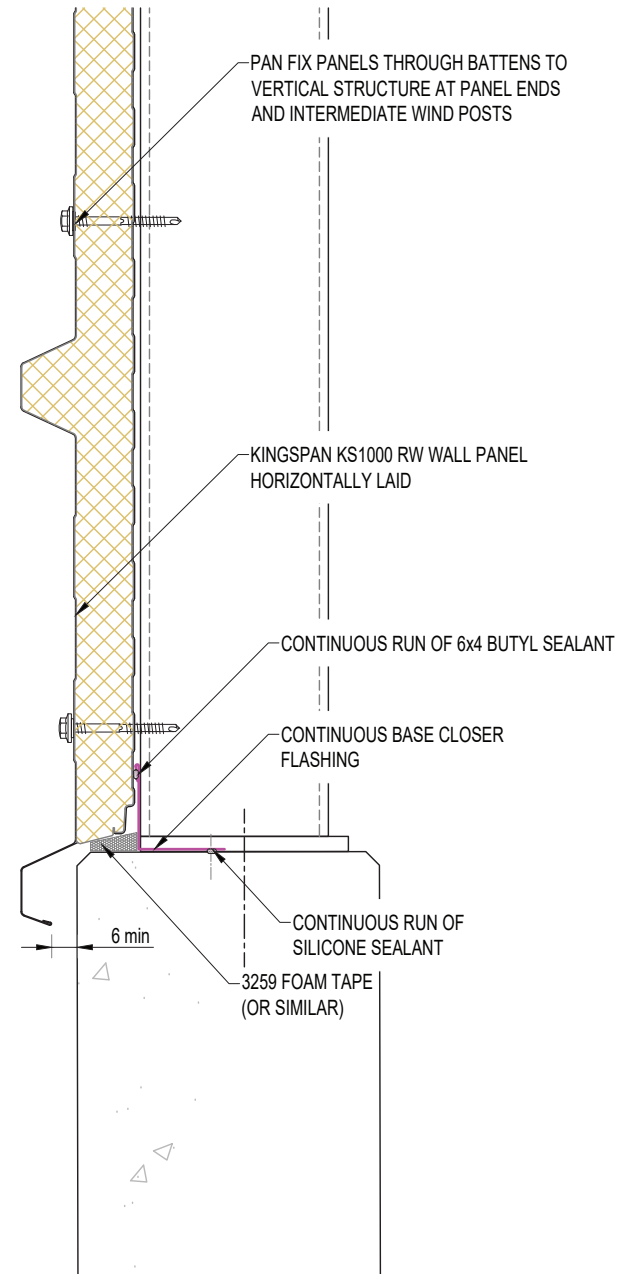
New Zealand: Kingspan Ltd  
97 Montreal St, Christchurch, Tel: 03 260 5530, Freephone: 0800 121280  
email: info@kingspanpanels.co.nz, www.kingspanpanels.co.nz



# BASE DETAILS ON PRECAST WALL\_1



09a



09b

SYSTEM KS1000_RW_STD_WALL_HORIZONTAL_Q4_2023		
DESCRIPTION BASE DETAILS ON PRECAST WALL_1		
APPROVED BY JS	DATE 09.10.23	REVISION -
DRG REF: RW_HS_09	SCALE 1:5	PAPER SIZE A4

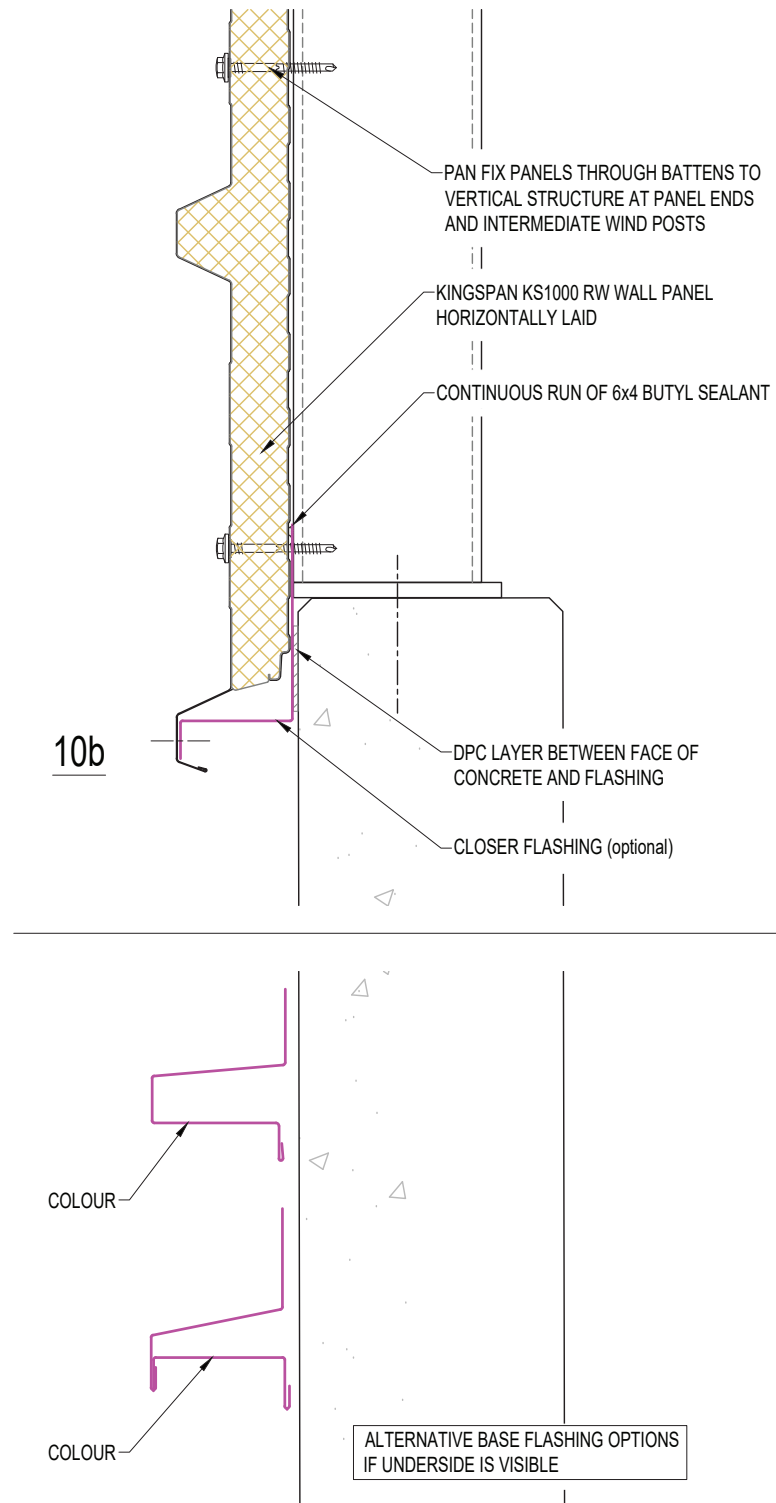
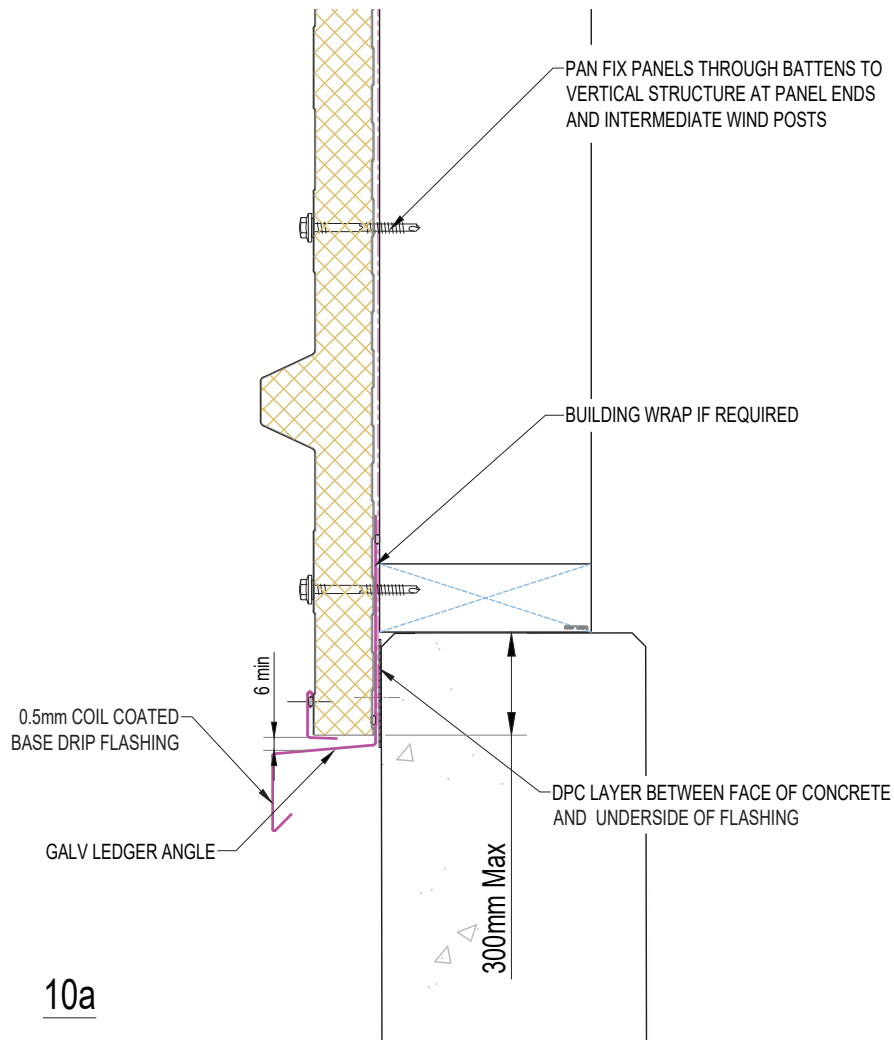
This document remains the property of Kingspan Ltd under copyright laws. Licence is granted to use this document and its contents in connection with Kingspan Ltd products only.  
©Kingspan Ltd


DO NOT SCALE. IF IN DOUBT ASK



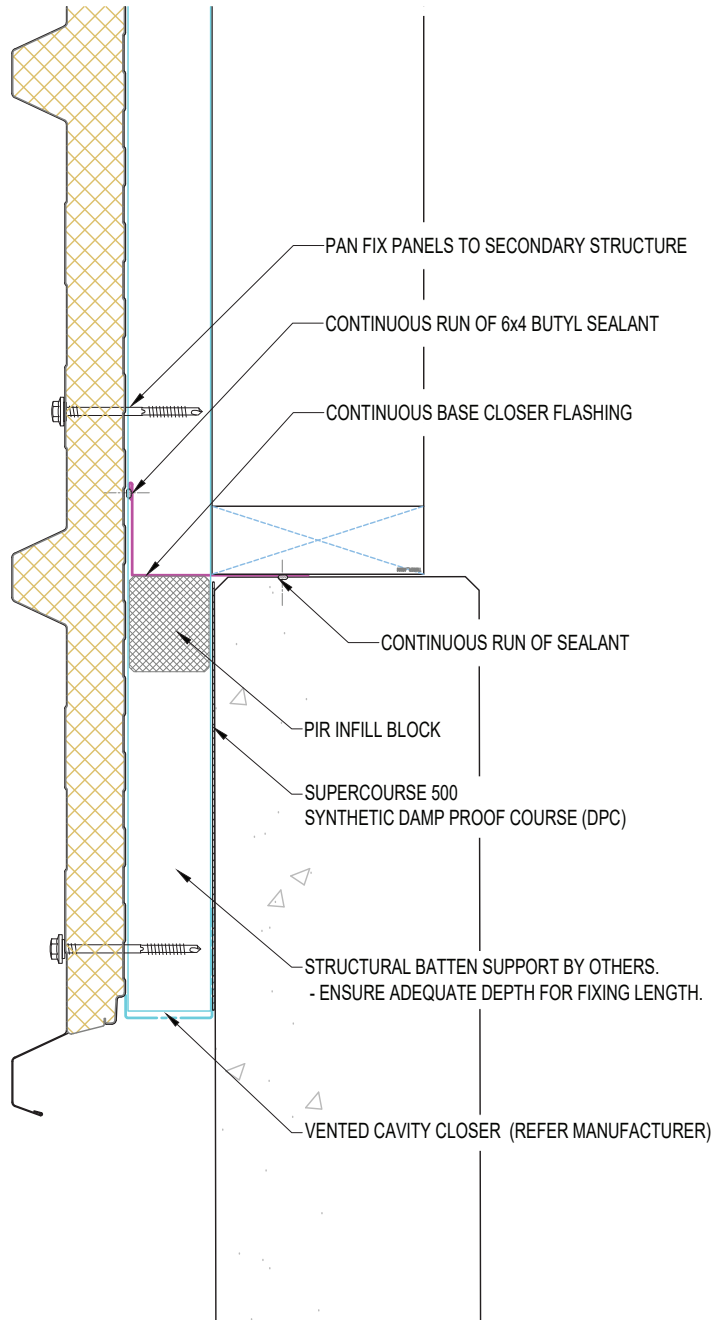
New Zealand: Kingspan Ltd  
97 Montreal St, Christchurch, Tel: 03 260 5530, Freephone: 0800 121280  
email: info@kingspanpanels.co.nz, www.kingspanpanels.co.nz

# BASE DETAILS ON PRECAST WALL\_2

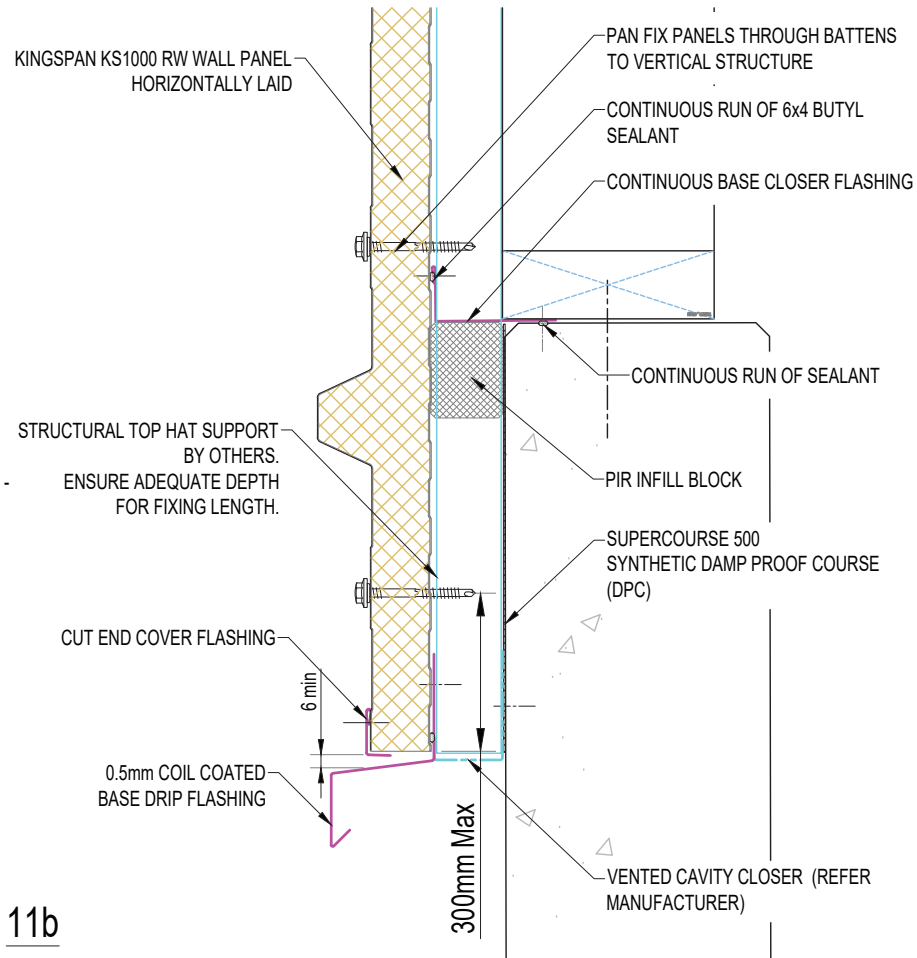


SYSTEM KS1000 RW_STD WALL_HORIZONTAL Q4_2023		
DESCRIPTION BASE DETAILS ON PRECAST WALL_2		
APPROVED BY JS	DATE 09.10.23	REVISION -
DRG REF: RW_HS_10	SCALE 1:5	PAPER SIZE A4
This document remains the property of Kingspan Ltd under copyright laws. Licence is granted to use this document and its contents in connection with Kingspan Ltd products only. ©Kingspan Ltd		
DO NOT SCALE. IF IN DOUBT ASK		
 <p>New Zealand: Kingspan Ltd 97 Montreal St, Christchurch, Tel: 03 260 5530, Freephone: 0800 121280 email: info@kingspanpanels.co.nz, www.kingspanpanels.co.nz</p>		

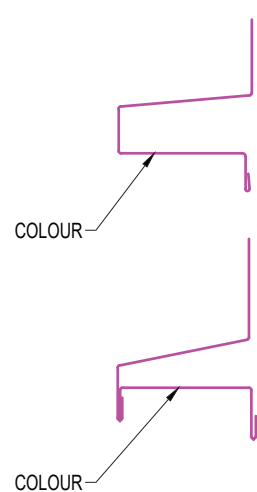
# BASE DETAILS ON PRECAST\_3




11a



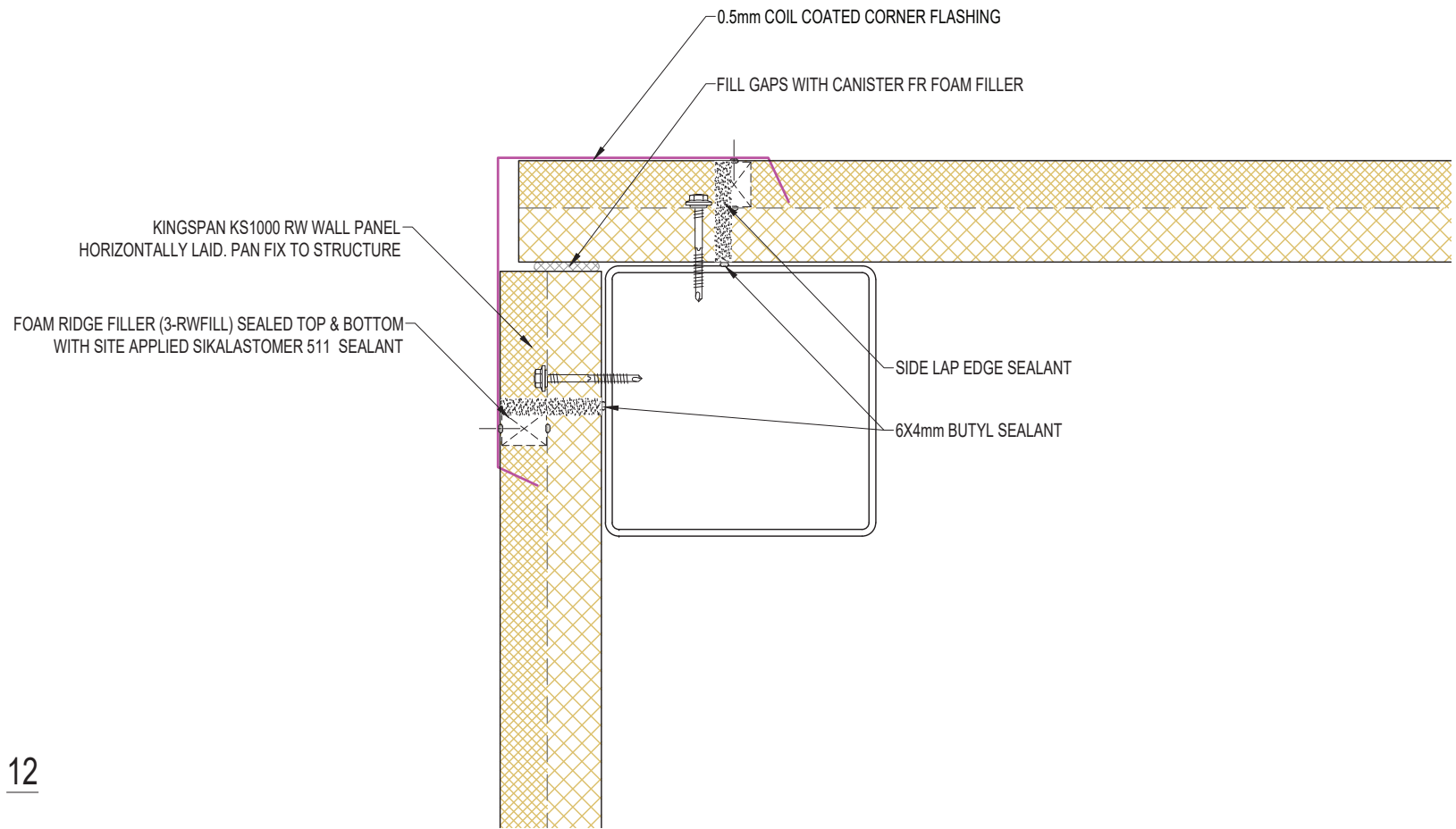
11b



ALTERNATIVE BASE FLASHING OPTIONS  
IF UNDERSIDE IS VISIBLE

SYSTEM KS1000_RW_STD_WALL_HORIZONTAL_Q4_2023		
DESCRIPTION BASE DETAILS ON PRECAST_3		
APPROVED BY JS	DATE 09.10.23	REVISION -
DRG REF: RW_HS_11	SCALE 1:5	PAPER SIZE A4
This document remains the property of Kingspan Ltd under copyright laws. Licence is granted to use this document and its contents in connection with Kingspan Ltd products only. ©Kingspan Ltd		
DO NOT SCALE. IF IN DOUBT ASK		
 New Zealand: Kingspan Ltd 97 Montreal St, Christchurch, Tel: 03 260 5530, Freephone: 0800 121280 email: info@kingspanpanels.co.nz, www.kingspanpanels.co.nz		

# EXTERNAL CORNER - DETAIL\_1



12

SYSTEM KS1000_RW_STD WALL_HORIZONTAL Q4_2023		
DESCRIPTION EXTERNAL CORNER - DETAIL_1		
APPROVED BY JS	DATE 09.10.23	REVISION -
DRG REF: RW_HS_12	SCALE 1:5	PAPER SIZE A4

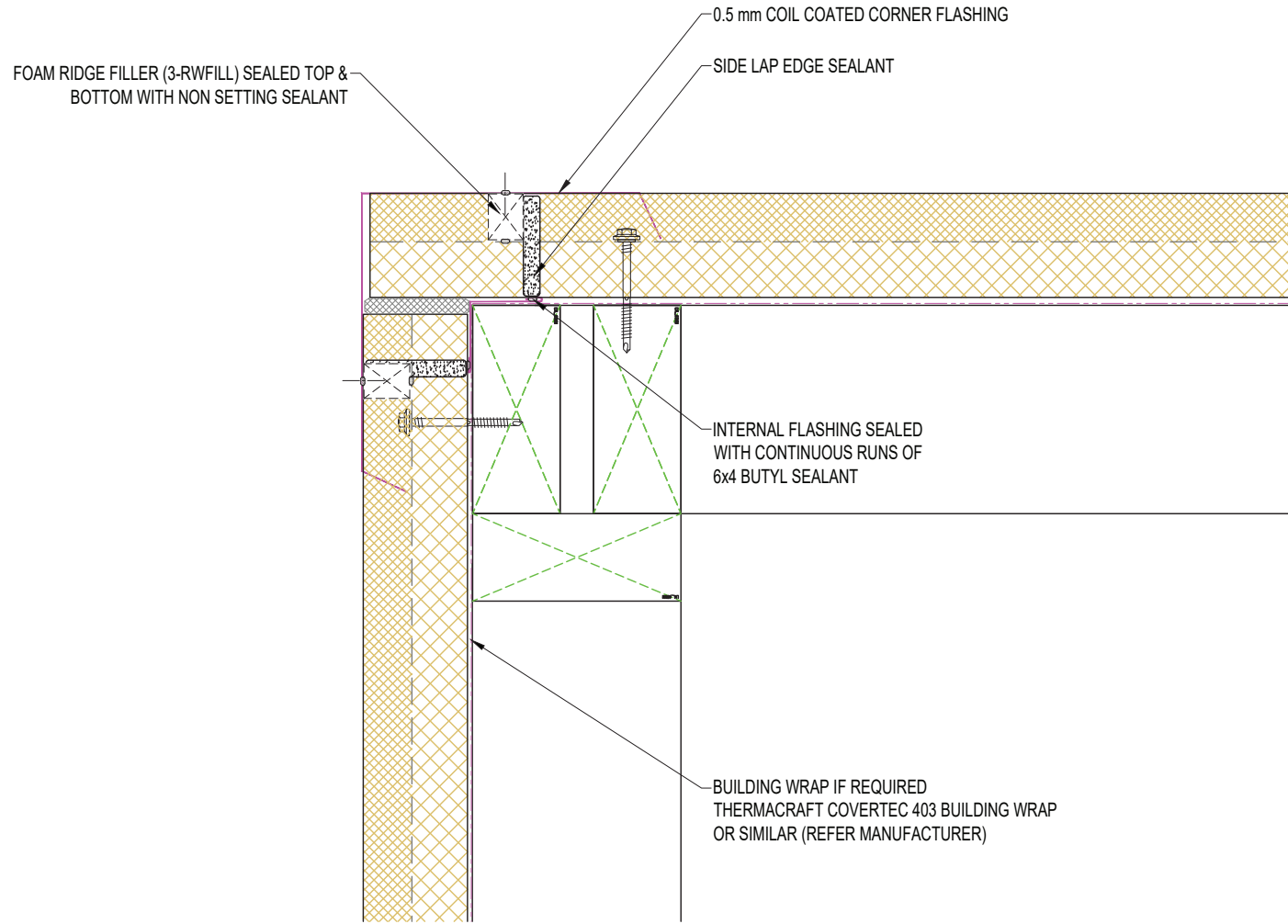
This document remains the property of Kingspan Ltd under copyright laws. Licence is granted to use this document and its contents in connection with Kingspan Ltd products only.  
©Kingspan Ltd

DO NOT SCALE. IF IN DOUBT ASK



New Zealand: Kingspan Ltd  
97 Montreal St, Christchurch, Tel: 03 260 5530, Freephone: 0800 121280  
email: info@kingspanpanels.co.nz, www.kingspanpanels.co.nz

# EXTERNAL CORNER - DETAIL\_2



SYSTEM KS1000_RW_STD WALL_HORIZONTAL Q4_2023		
DESCRIPTION EXTERNAL CORNER - DETAIL_2		
APPROVED BY JS	DATE 09.10.23	REVISION -
DRG REF: RW_HS_13	SCALE 1:5	PAPER SIZE A4

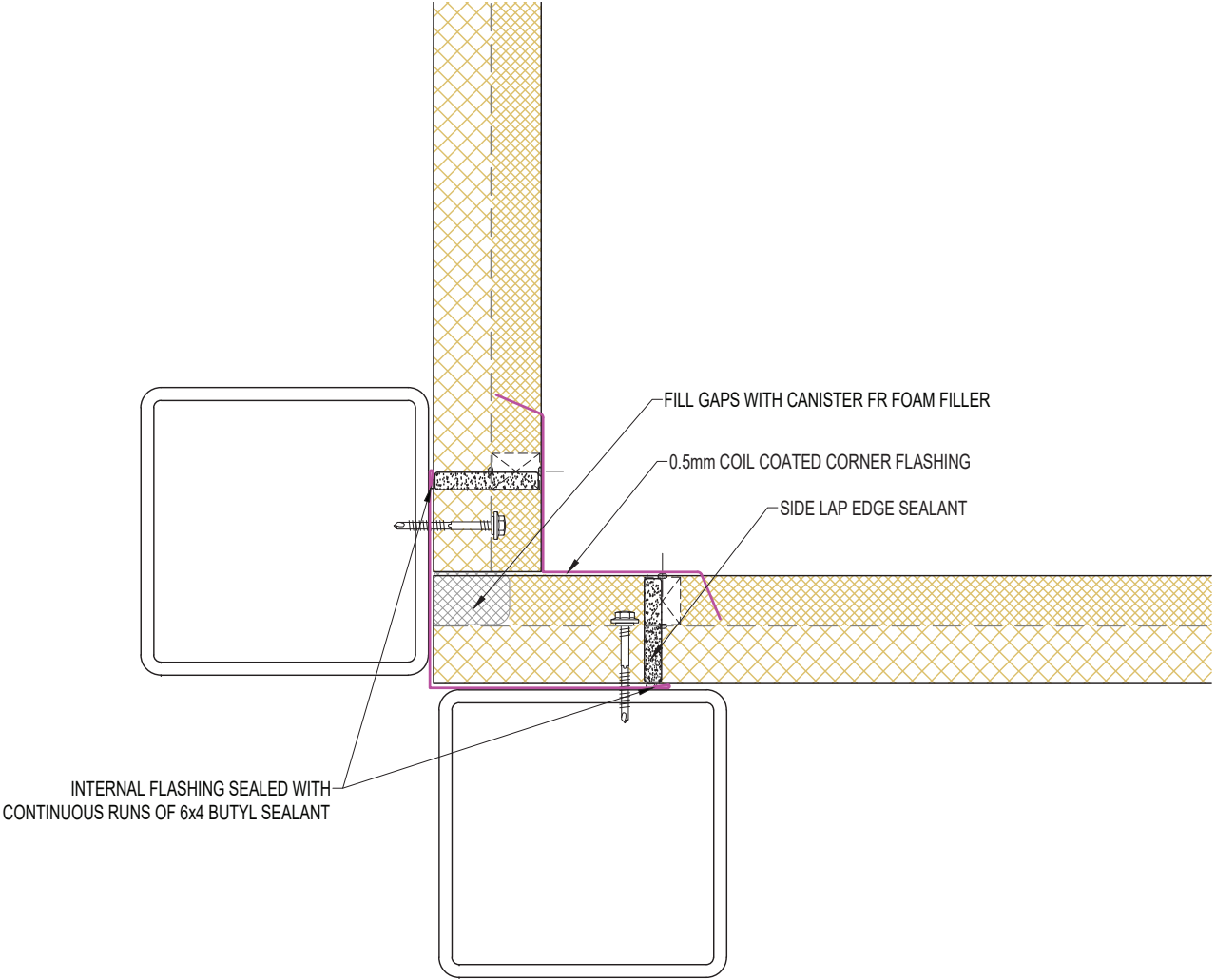
This document remains the property of Kingspan Ltd under copyright laws. Licence is granted to use this document and its contents in connection with Kingspan Ltd products only.  
©Kingspan Ltd

DO NOT SCALE. IF IN DOUBT ASK



New Zealand: Kingspan Ltd  
97 Montreal St, Christchurch, Tel: 03 260 5530, Freephone: 0800 121280  
email: info@kingspanpanels.co.nz, www.kingspanpanels.co.nz

# INTERNAL CORNER DETAIL\_2



SYSTEM KS1000_RW_STD_WALL_HORIZONTAL_Q4_2023		
DESCRIPTION INTERNAL CORNER DETAIL_2		
APPROVED BY JS	DATE 09.10.23	REVISION -
DRG REF: RW_HS_14	SCALE 1:5	PAPER SIZE A4

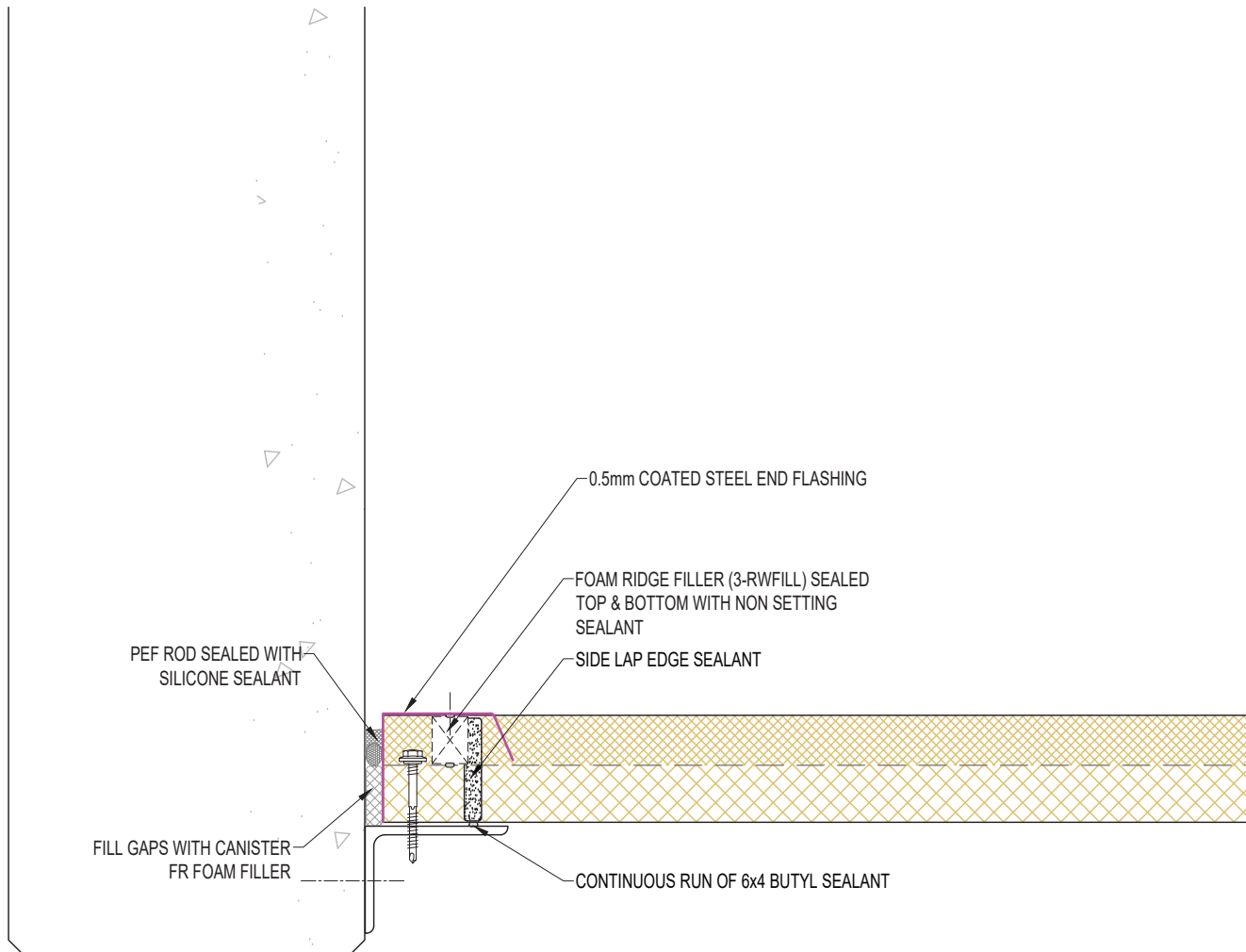
This document remains the property of Kingspan Ltd under copyright laws. Licence is granted to use this document and its contents in connection with Kingspan Ltd products only.  
©Kingspan Ltd

DO NOT SCALE. IF IN DOUBT ASK



New Zealand: Kingspan Ltd  
97 Montreal St, Christchurch, Tel: 03 260 5530, Freephone: 0800 121280  
email: info@kingspanpanels.co.nz, www.kingspanpanels.co.nz

# INTERNAL CORNER DETAIL\_2



SYSTEM KS1000_RW_STD WALL_HORIZONTAL Q4_2023		
DESCRIPTION INTERNAL CORNER DETAIL_2		
APPROVED BY JS	DATE 09.10.23	REVISION -
DRG REF: RW_HS_15	SCALE 1:5	PAPER SIZE A4

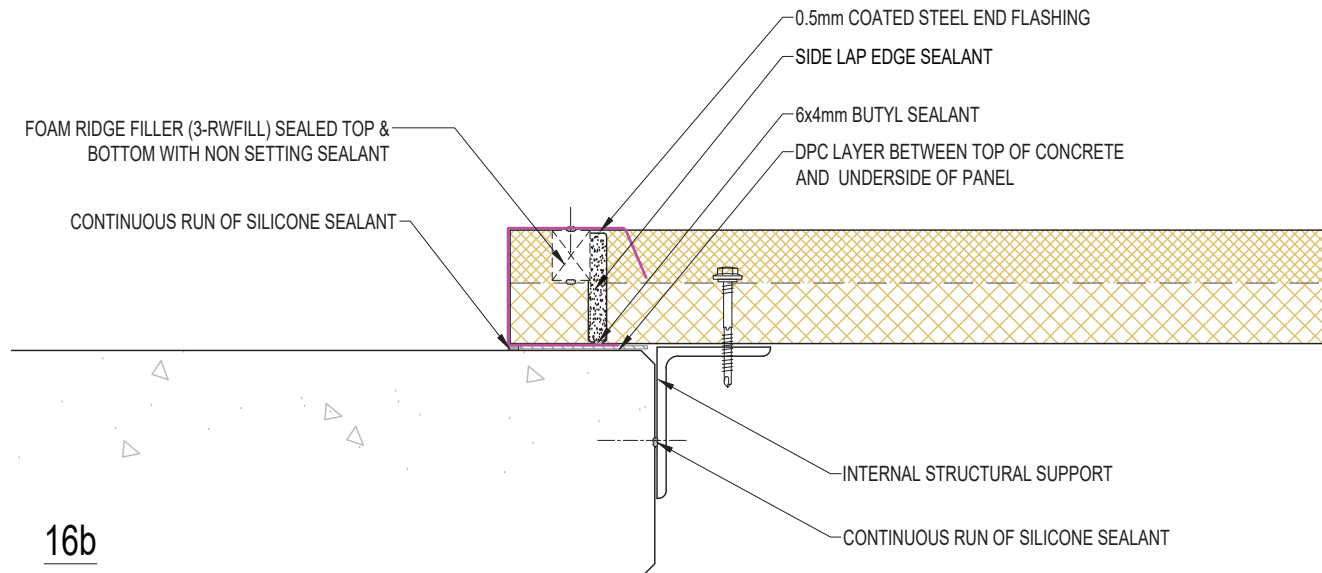
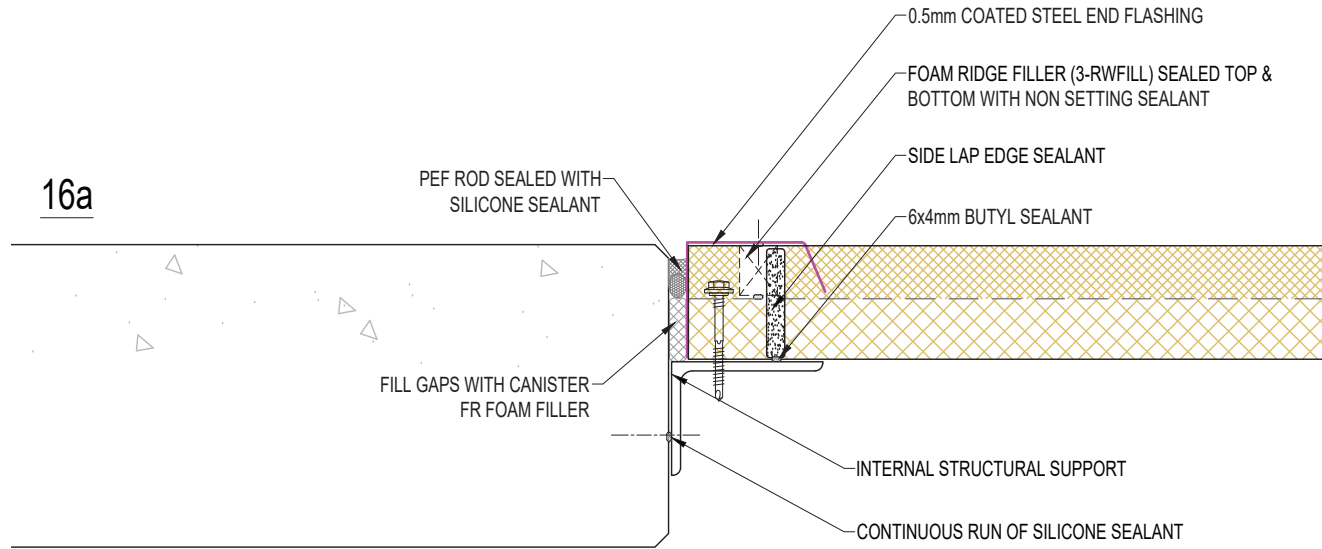
This document remains the property of Kingspan Ltd under copyright laws. Licence is granted to use this document and its contents in connection with Kingspan Ltd products only.  
©Kingspan Ltd

DO NOT SCALE. IF IN DOUBT ASK



New Zealand: Kingspan Ltd  
97 Montreal St, Christchurch, Tel: 03 260 5530, Freephone: 0800 121280  
email: info@kingspanpanels.co.nz, www.kingspanpanels.co.nz

# ABUTMENTS TO CONCRETE



SYSTEM KS1000 RW_STD WALL_HORIZONTAL Q4_2023		
DESCRIPTION ABUTMENTS TO CONCRETE		
APPROVED BY JS	DATE 09.10.23	REVISION -
DRG REF: RW_HS_16	SCALE 1:5	PAPER SIZE A4

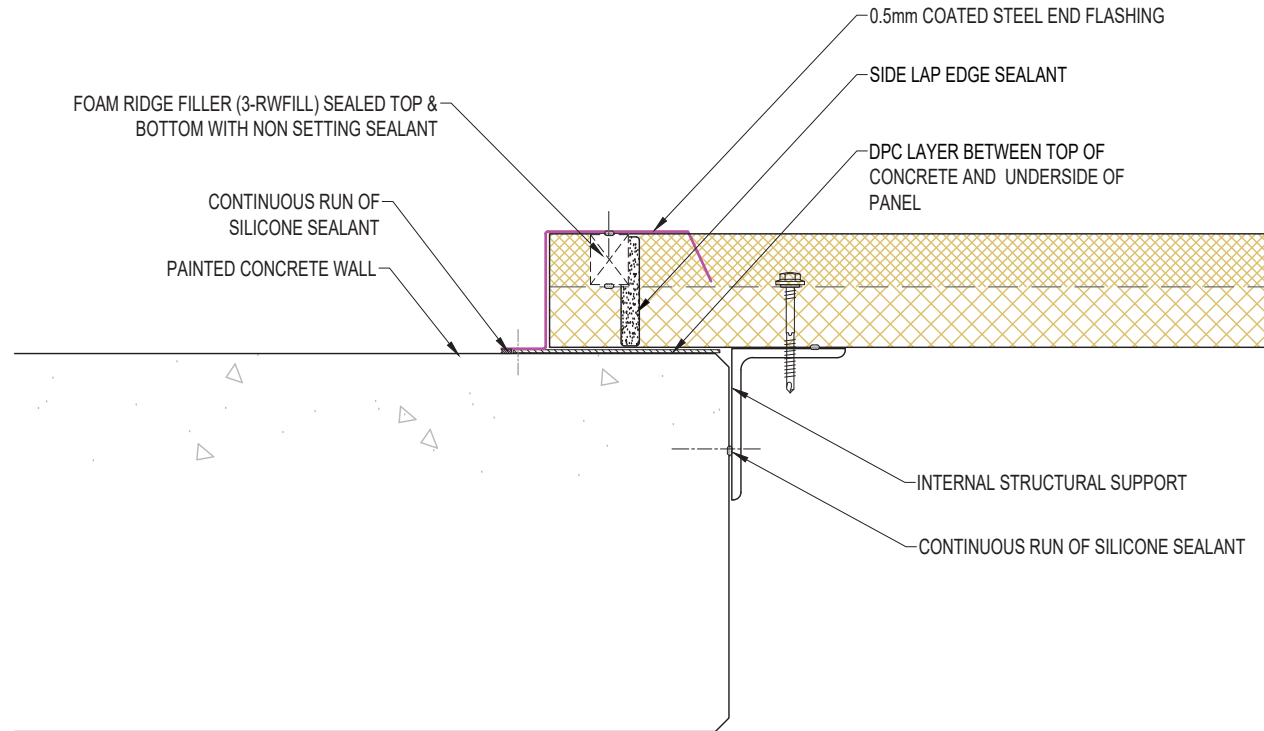
This document remains the property of Kingspan Ltd under copyright laws. Licence is granted to use this document and its contents in connection with Kingspan Ltd products only.  
©Kingspan Ltd

DO NOT SCALE. IF IN DOUBT ASK

New Zealand: Kingspan Ltd  
97 Montreal St, Christchurch, Tel: 03 260 5530, Freephone: 0800 121280  
email: info@kingspanpanels.co.nz, www.kingspanpanels.co.nz



# ABUTMENTS TO CONCRETE



SYSTEM KS1000_RW_STD_WALL_HORIZONTAL_Q4_2023		
DESCRIPTION ABUTMENTS TO CONCRETE		
APPROVED BY JS	DATE 09.10.23	REVISION -
DRG REF: RW_HS_17	SCALE 1:5	PAPER SIZE A4

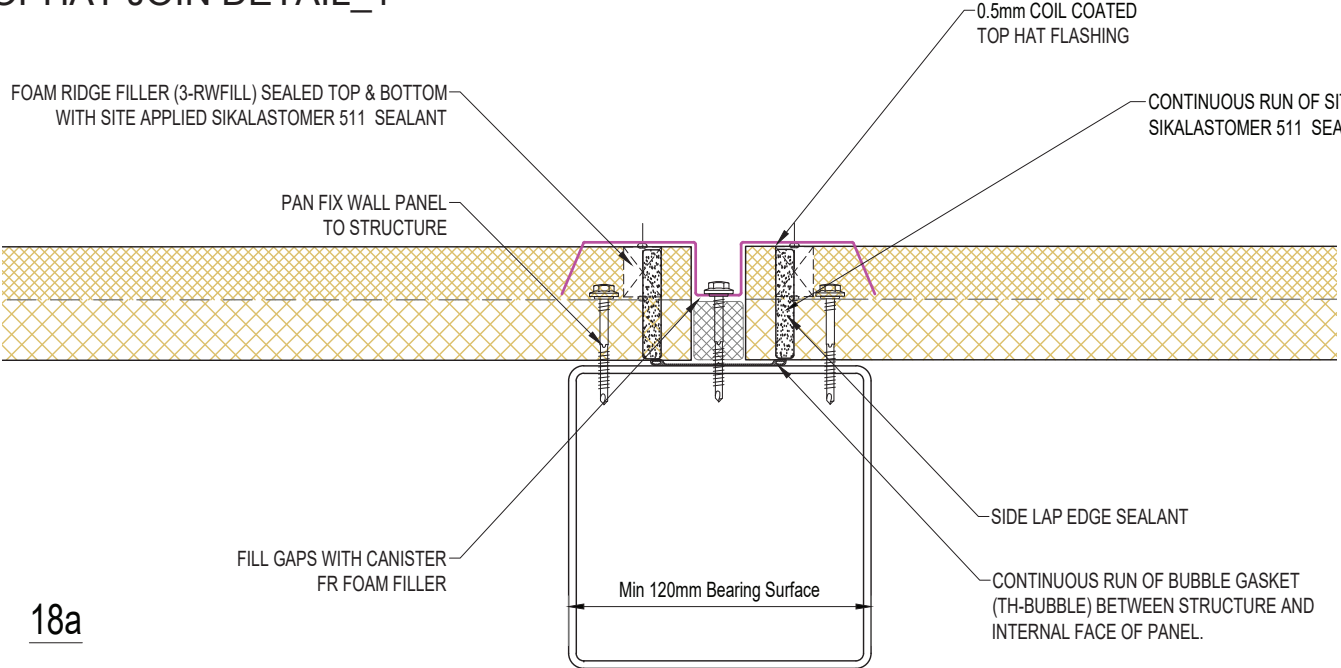
This document remains the property of Kingspan Ltd under copyright laws. Licence is granted to use this document and its contents in connection with Kingspan Ltd products only.  
©Kingspan Ltd

DO NOT SCALE. IF IN DOUBT ASK

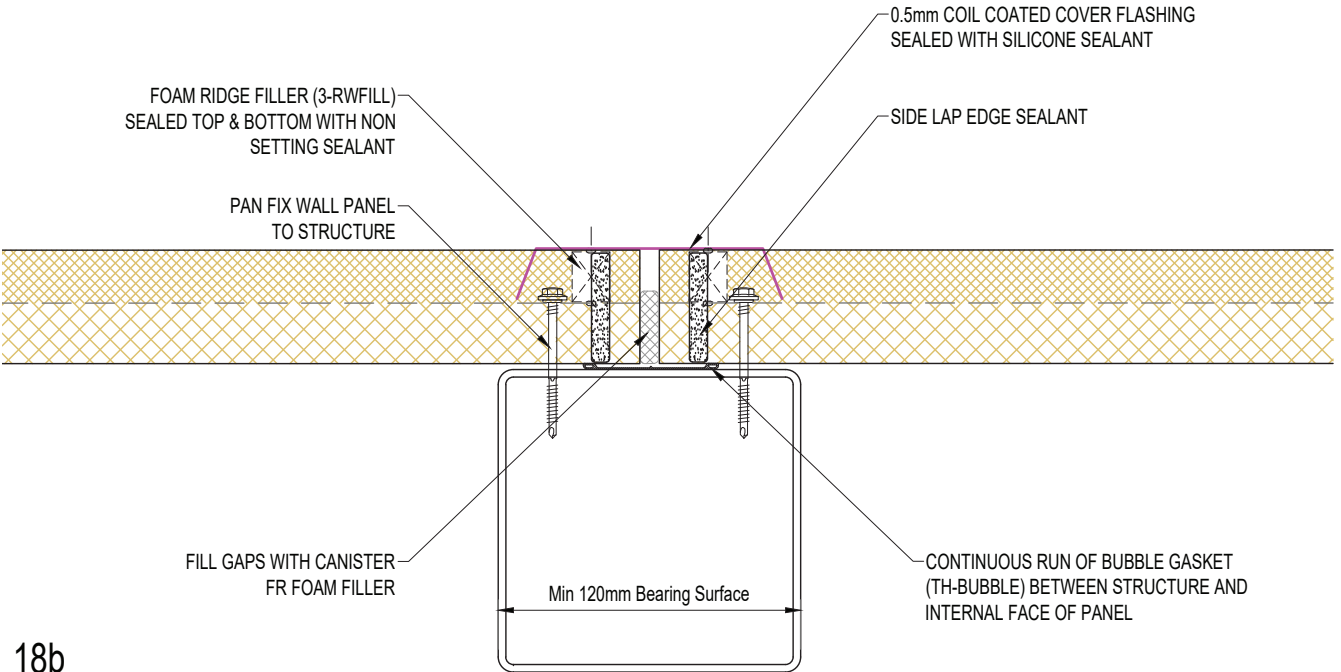
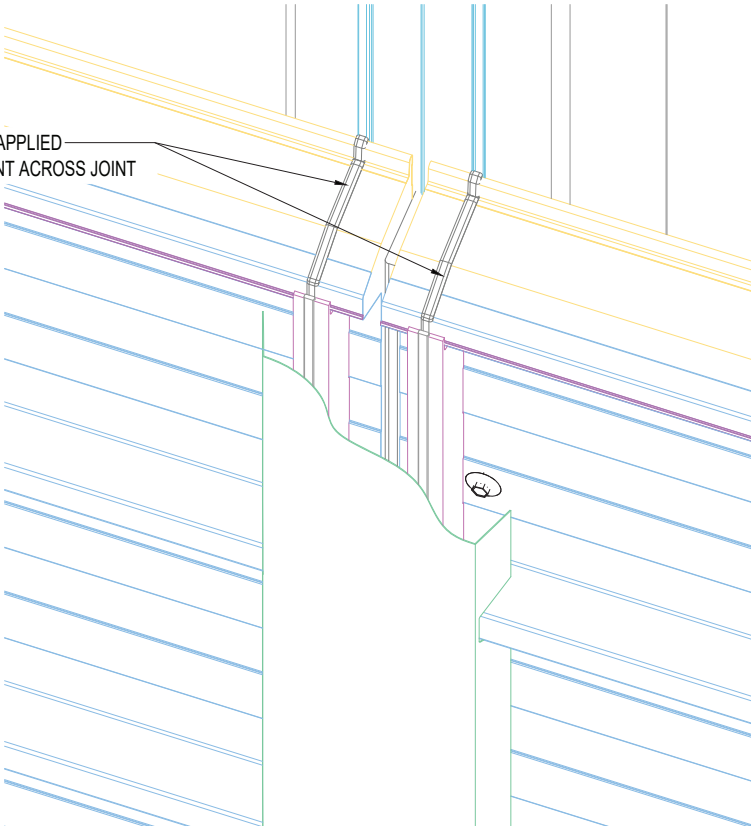


New Zealand: Kingspan Ltd  
97 Montreal St, Christchurch, Tel: 03 260 5530, Freephone: 0800 121280  
email: info@kingspanpanels.co.nz, www.kingspanpanels.co.nz

# TOPHAT JOIN DETAIL\_1



18a



18b

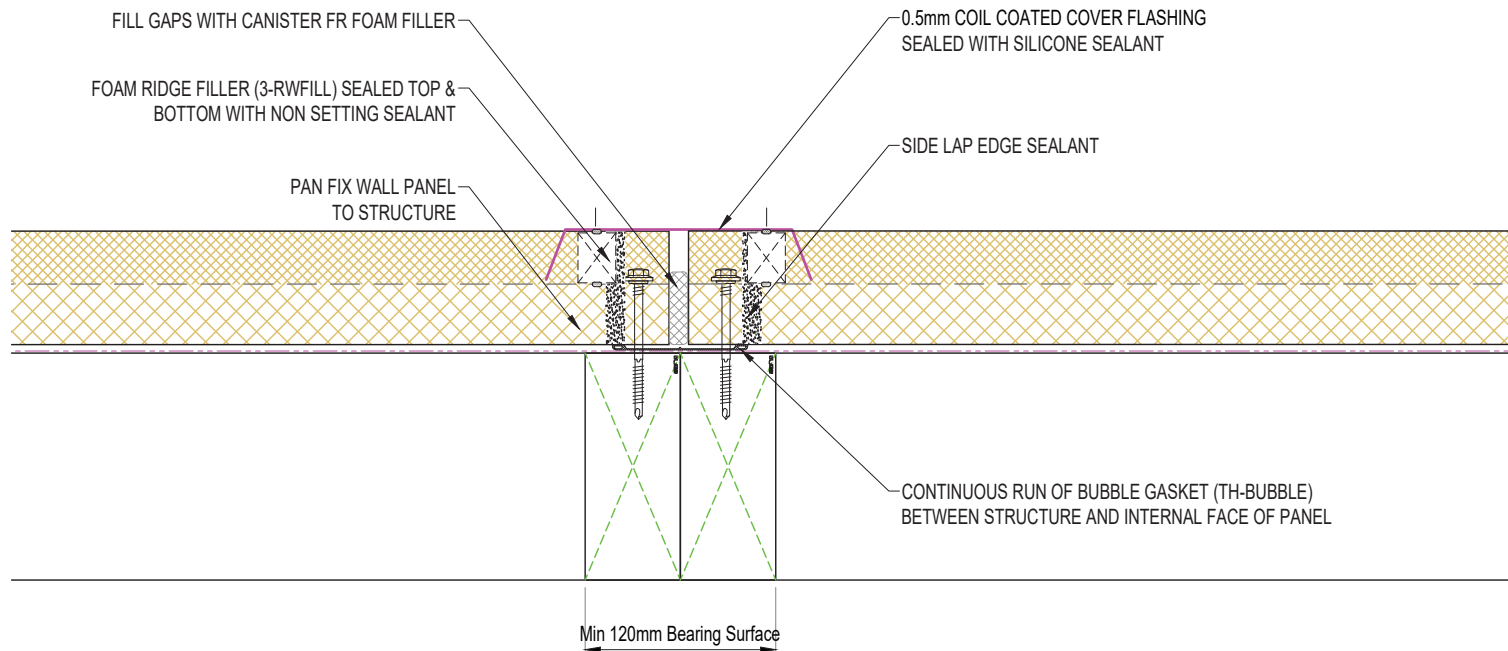
SYSTEM KS1000_RW_STD_WALL_HORIZONTAL_Q4_2023		
DESCRIPTION TOPHAT JOIN DETAIL_1		
APPROVED BY JS	DATE 09.10.23	REVISION -
DRG REF: RW_HS_18	SCALE 1:5	PAPER SIZE A4

This document remains the property of Kingspan Ltd under copyright laws. Licence is granted to use this document and its contents in connection with Kingspan Ltd products only.  
©Kingspan Ltd

DO NOT SCALE. IF IN DOUBT ASK

New Zealand: Kingspan Ltd  
97 Montreal St, Christchurch, Tel: 03 260 5530, Freephone: 0800 121280  
email: info@kingspanpanels.co.nz, www.kingspanpanels.co.nz

# TOPHAT JOIN DETAIL\_2



SYSTEM KS1000 RW_STD WALL_HORIZONTAL Q4_2023		
DESCRIPTION TOPHAT JOIN DETAIL_2		
APPROVED BY JS	DATE 09.10.23	REVISION -
DRG REF: RW_HS_19	SCALE 1:5	PAPER SIZE A4

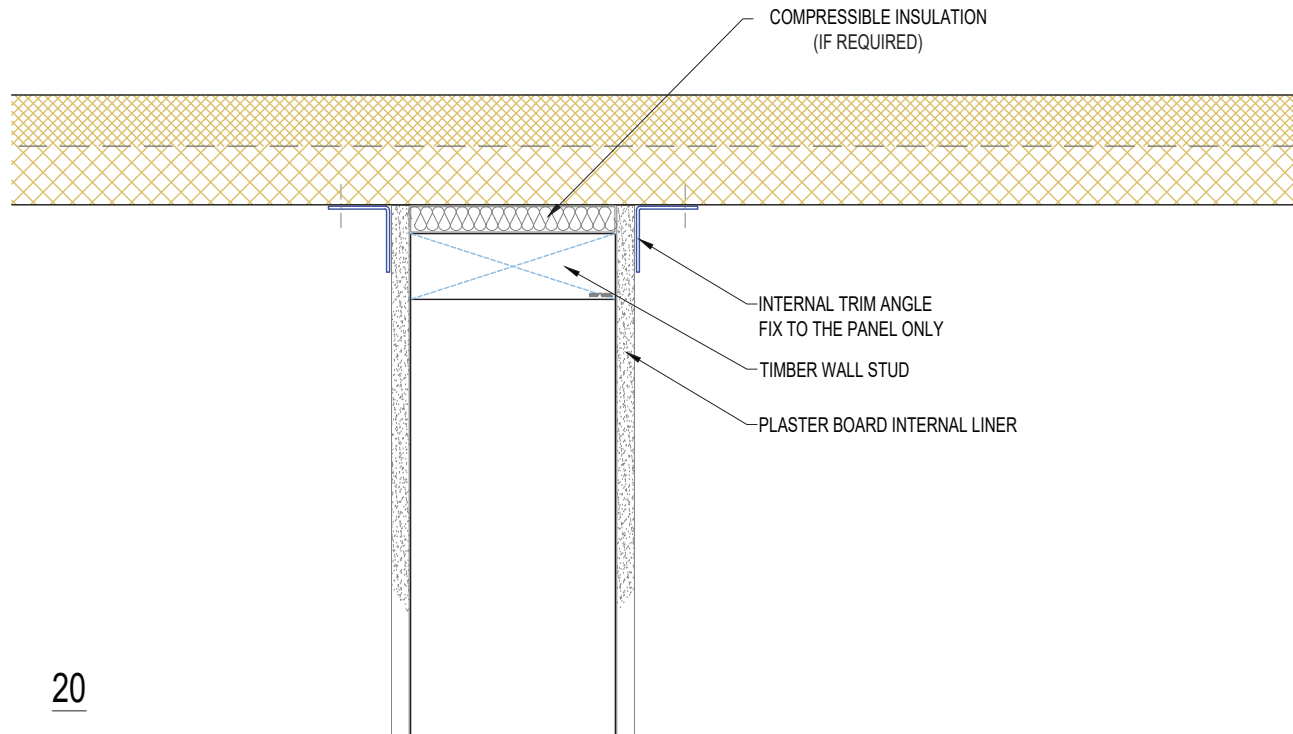
This document remains the property of Kingspan Ltd under copyright laws. Licence is granted to use this document and its contents in connection with Kingspan Ltd products only.  
©Kingspan Ltd

DO NOT SCALE. IF IN DOUBT ASK



New Zealand: Kingspan Ltd  
97 Montreal St, Christchurch, Tel: 03 260 5530, Freephone: 0800 121280  
email: info@kingspanpanels.co.nz, www.kingspanpanels.co.nz

# INTERNAL PARTITION WALL ABUTS PANEL



20

SYSTEM KS1000_RW_STD_WALL_HORIZONTAL_Q4_2023		
DESCRIPTION INTERNAL PARTITION WALL ABUTS PANEL		
APPROVED BY JS	DATE 09.10.23	REVISION -
DRG REF: RW_HS_20	SCALE 1:5	PAPER SIZE A4

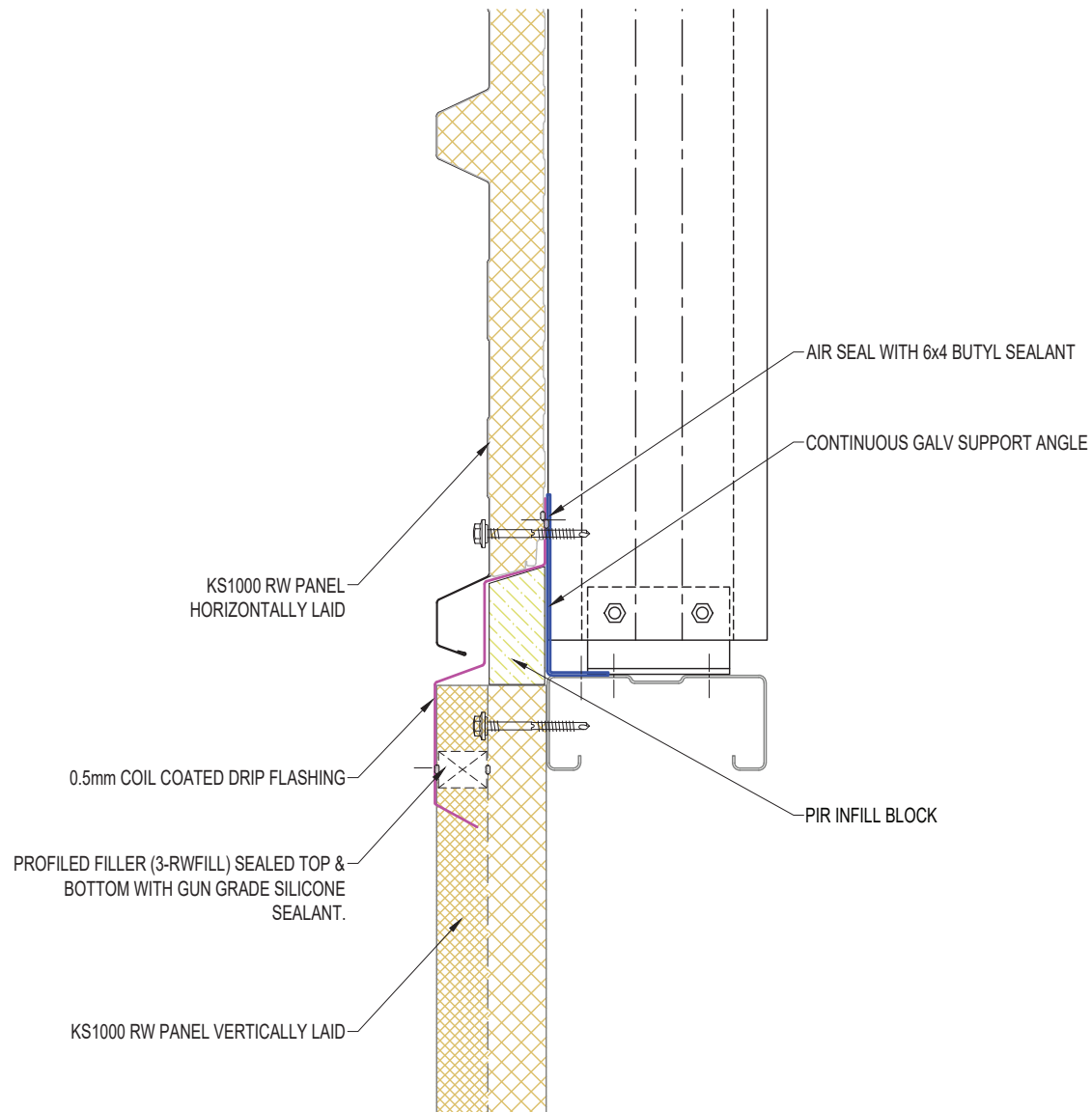
This document remains the property of Kingspan Ltd under copyright laws. Licence is granted to use this document and its contents in connection with Kingspan Ltd products only.  
©Kingspan Ltd

DO NOT SCALE. IF IN DOUBT ASK



New Zealand: Kingspan Ltd  
97 Montreal St, Christchurch, Tel: 03 260 5530, Freephone: 0800 121280  
email: info@kingspanpanels.co.nz, www.kingspanpanels.co.nz

# RW HORIZONTAL TO VERTICAL BREAK DETAIL



SYSTEM KS1000 RW_STD WALL_HORIZONTAL Q4_2023		
DESCRIPTION RW HORIZONTAL TO VERTICAL BREAK DETAIL		
APPROVED BY JS	DATE 09.10.23	REVISION -
DRG REF: RW_HS_21	SCALE 1:5	PAPER SIZE A4

This document remains the property of Kingspan Ltd under copyright laws. Licence is granted to use this document and its contents in connection with Kingspan Ltd products only.  
©Kingspan Ltd

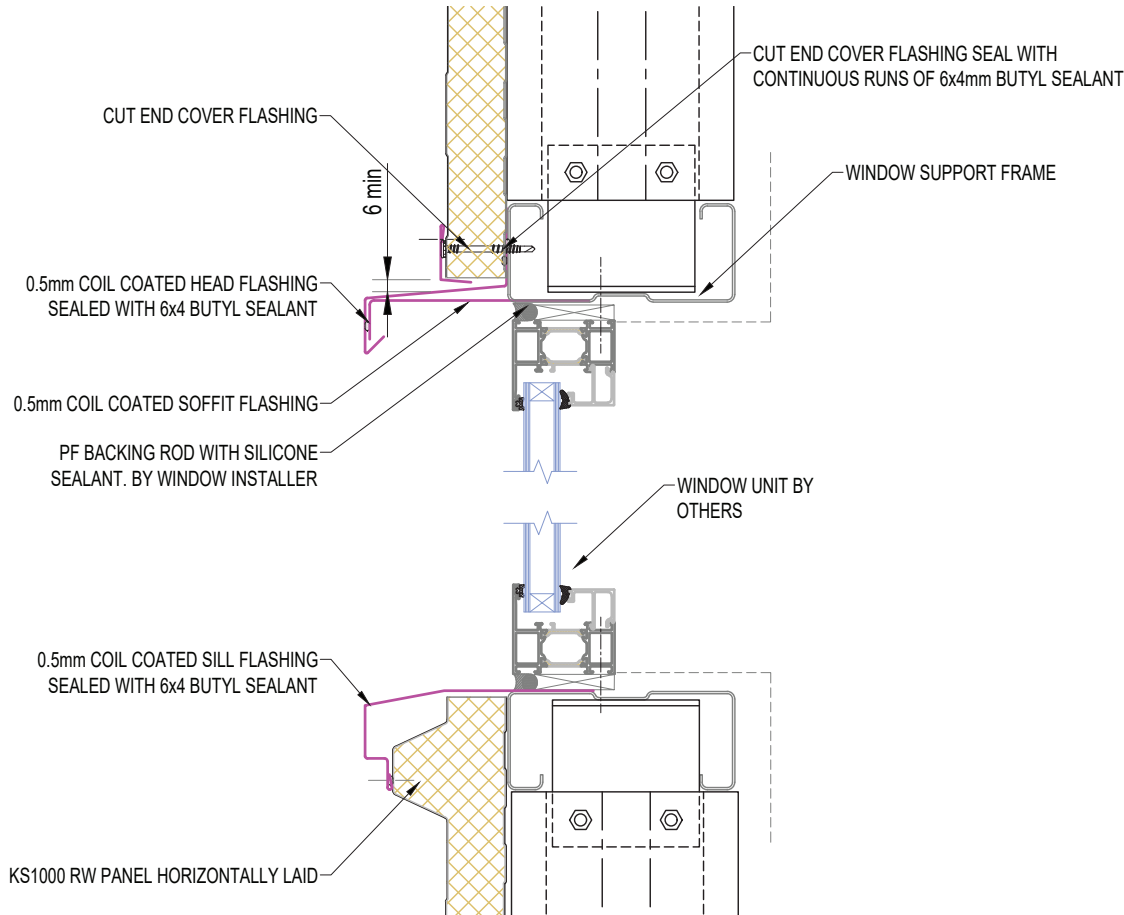
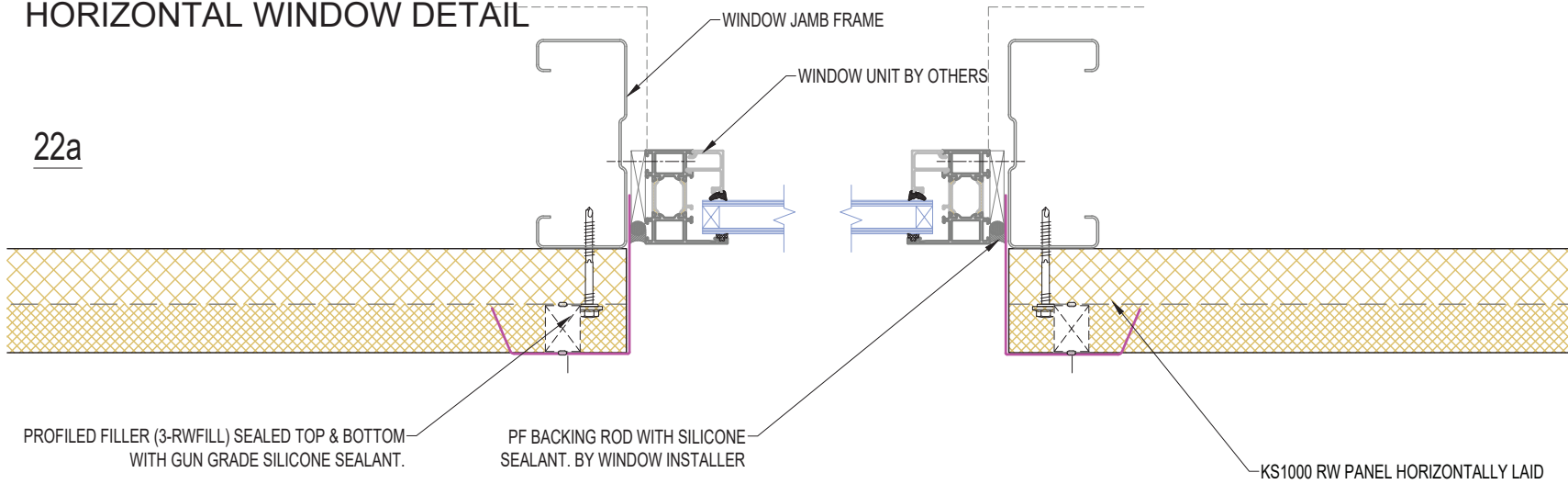
DO NOT SCALE. IF IN DOUBT ASK



New Zealand: Kingspan Ltd  
97 Montreal St, Christchurch, Tel: 03 260 5530, Freephone: 0800 121280  
email: info@kingspanpanels.co.nz, www.kingspanpanels.co.nz

# HORIZONTAL WINDOW DETAIL

22a



22b

SYSTEM KS1000_RW_STD_WALL_HORIZONTAL_Q4_2023		
DESCRIPTION HORIZONTAL WINDOW DETAIL		
APPROVED BY JS	DATE 09.10.23	REVISION -
DRG REF: RW_HS_22	SCALE 1:5	PAPER SIZE A4

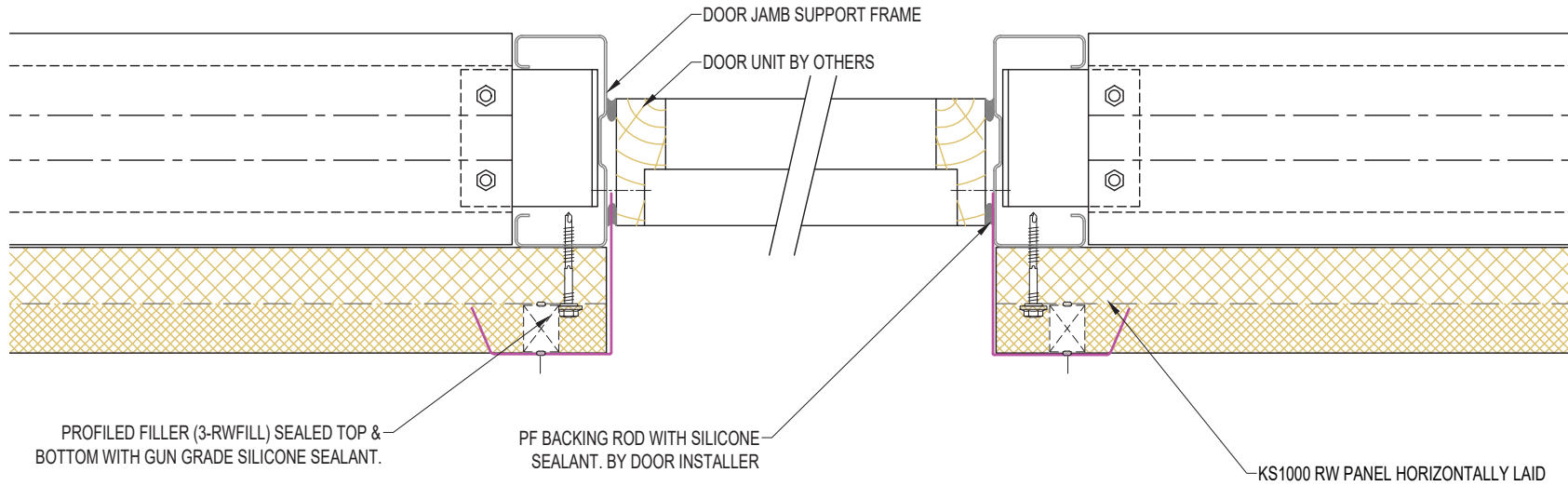
This document remains the property of Kingspan Ltd under copyright laws. Licence is granted to use this document and its contents in connection with Kingspan Ltd products only.  
©Kingspan Ltd

DO NOT SCALE. IF IN DOUBT ASK

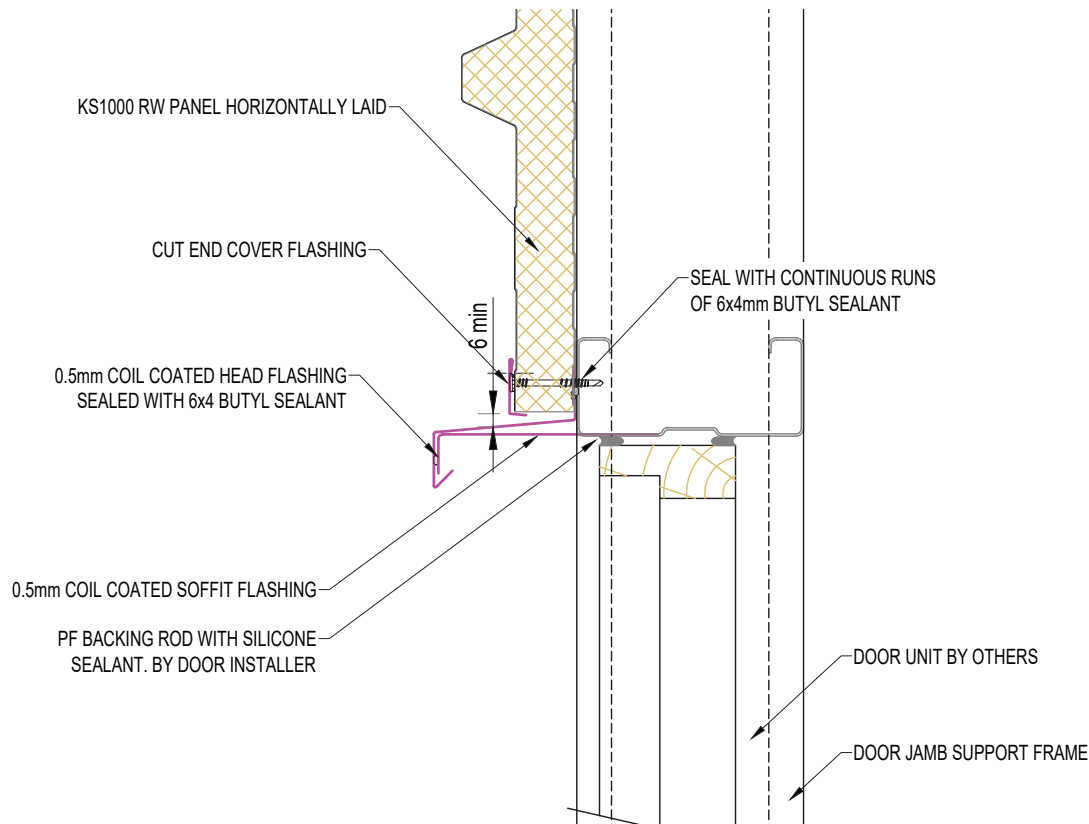


New Zealand: Kingspan Ltd  
97 Montreal St, Christchurch, Tel: 03 260 5530, Freephone: 0800 121280  
email: info@kingspanpanels.co.nz, www.kingspanpanels.co.nz

# PERSONNEL DOOR DETAIL



23a




23b

SYSTEM KS1000 RW_STD WALL_HORIZONTAL Q4_2023		
DESCRIPTION PERSONNEL DOOR DETAIL		
APPROVED BY JS	DATE 09.10.23	REVISION -
DRG REF: RW_HS_23	SCALE 1:5	PAPER SIZE A4

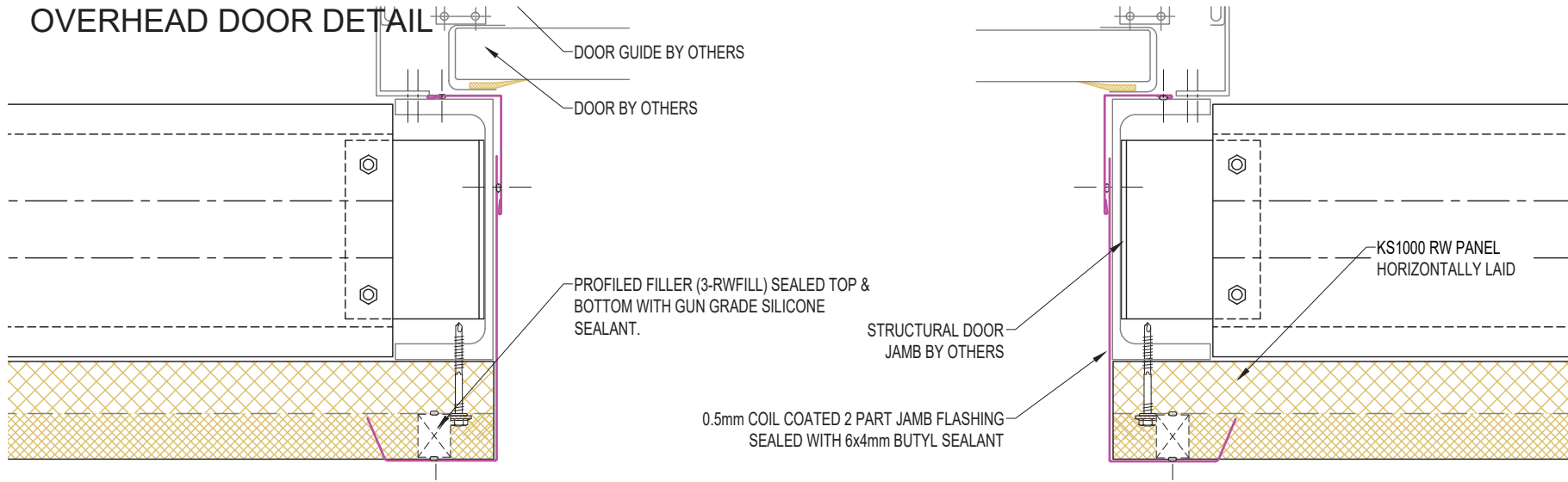
This document remains the property of Kingspan Ltd under copyright laws. Licence is granted to use this document and its contents in connection with Kingspan Ltd products only.  
©Kingspan Ltd

DO NOT SCALE. IF IN DOUBT ASK

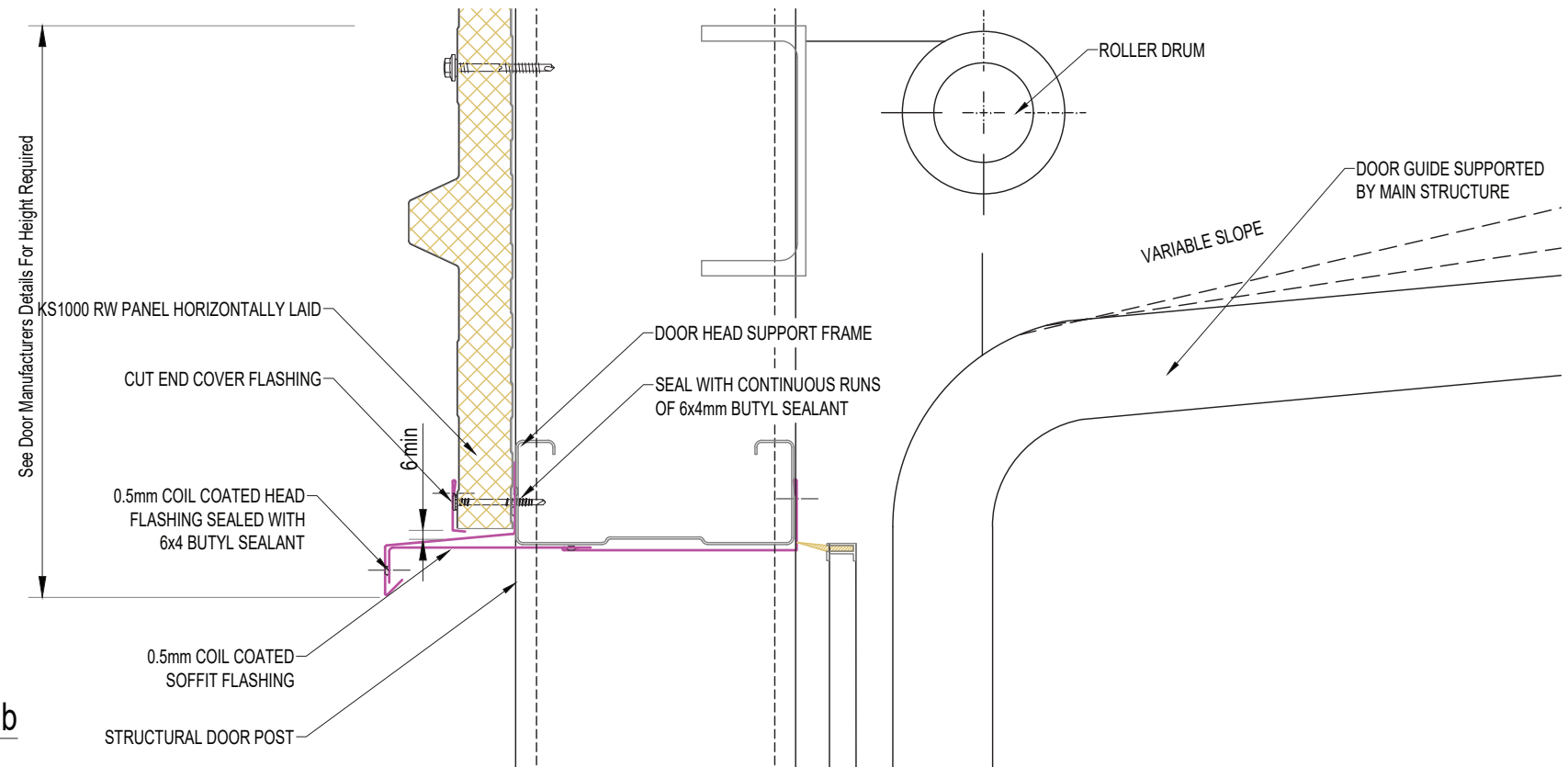


New Zealand: Kingspan Ltd  
97 Montreal St, Christchurch, Tel: 03 260 5530, Freephone: 0800 121280  
email: info@kingspanpanels.co.nz, www.kingspanpanels.co.nz

# OVERHEAD DOOR DETAIL



24a



24b

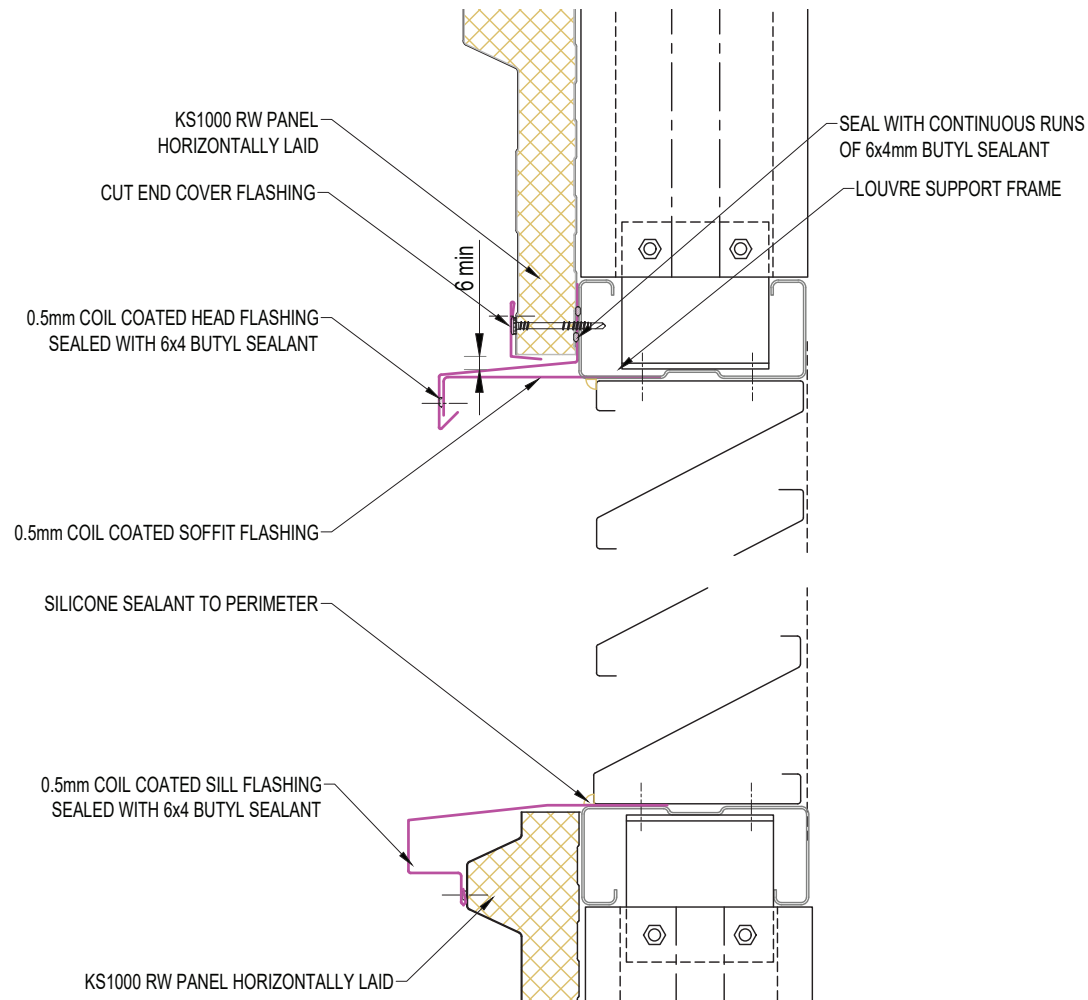
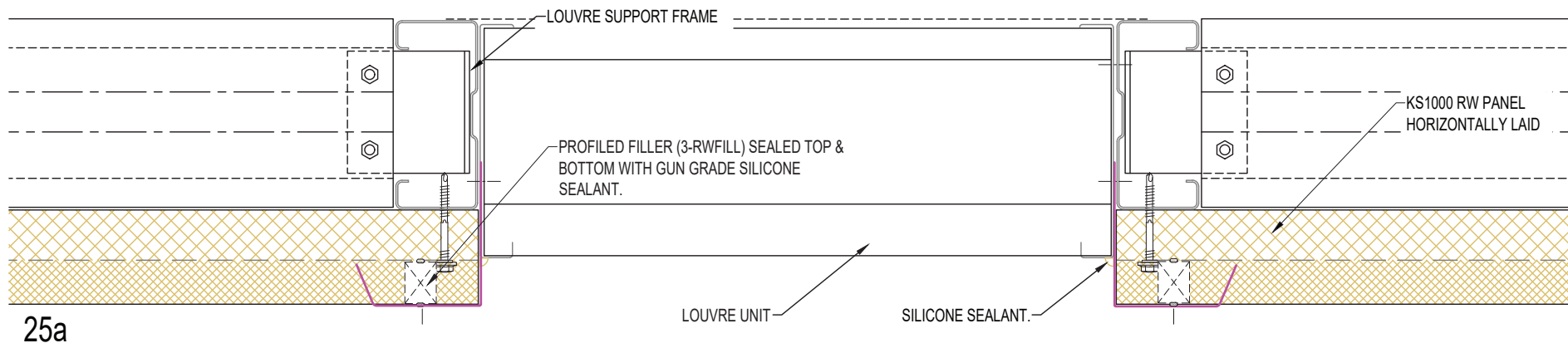
SYSTEM KS1000 RW_STD WALL_HORIZONTAL Q4_2023		
DESCRIPTION OVERHEAD DOOR DETAIL		
APPROVED BY JS	DATE 09.10.23	REVISION -
DRG REF: RW_HS_24	SCALE 1:5	PAPER SIZE A4
This document remains the property of Kingspan Ltd under copyright laws. Licence is granted to use this document and its contents in connection with Kingspan Ltd products only. ©Kingspan Ltd		

DO NOT SCALE. IF IN DOUBT ASK

New Zealand: Kingspan Ltd  
97 Montreal St, Christchurch, Tel: 03 260 5530, Freephone: 0800 121280  
email: info@kingspanpanels.co.nz www.kingspanpanels.co.nz



# LOUVRE DETAIL



SYSTEM KS1000_RW_STD_WALL_HORIZONTAL_Q4_2023		
DESCRIPTION LOUVRE DETAIL		
APPROVED BY JS	DATE 09.10.23	REVISION -
DRG REF: RW_HS_25	SCALE 1:5	PAPER SIZE A4

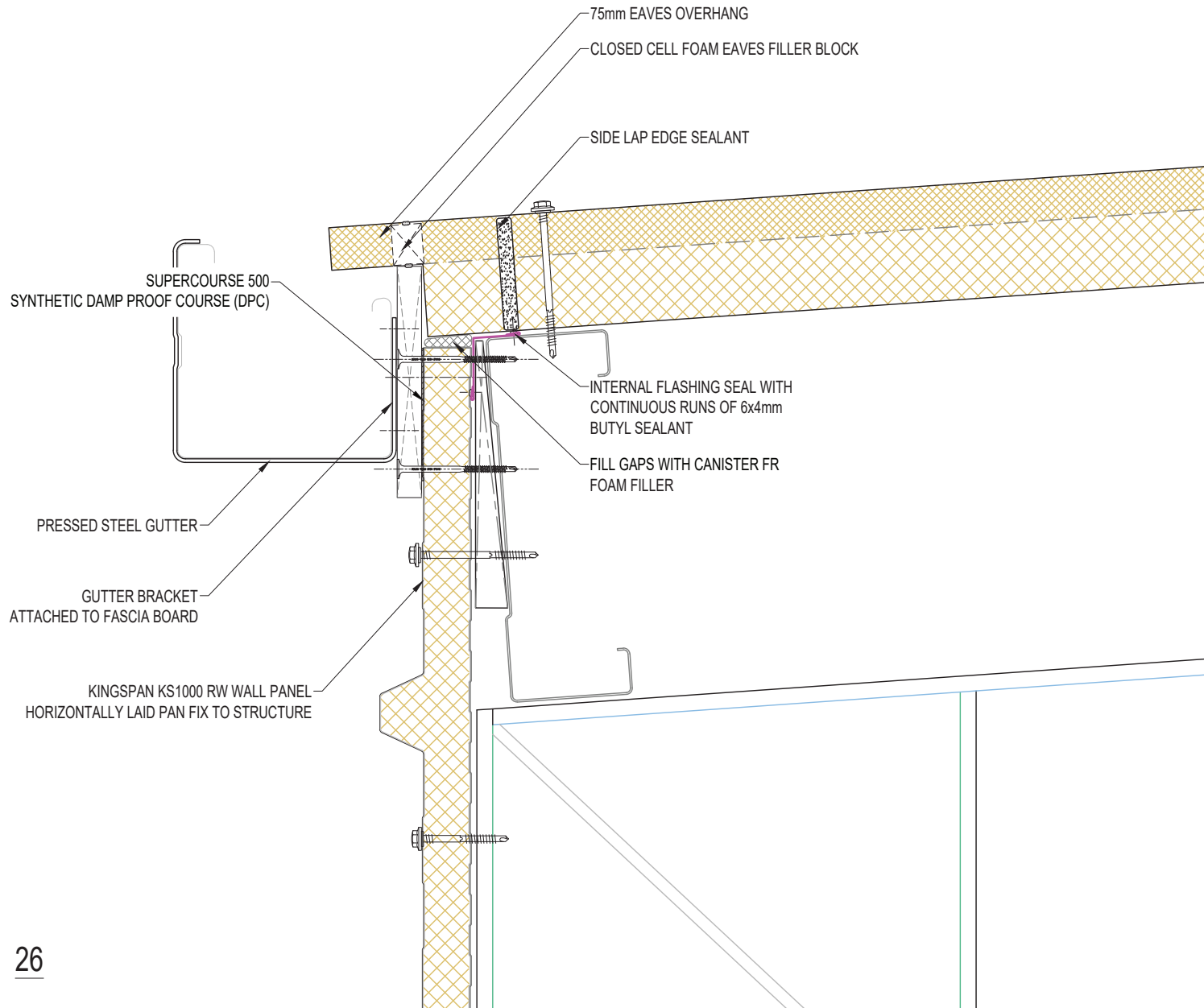
This document remains the property of Kingspan Ltd under copyright laws. Licence is granted to use this document and its contents in connection with Kingspan Ltd products only.  
©Kingspan Ltd

DO NOT SCALE. IF IN DOUBT ASK



New Zealand: Kingspan Ltd  
97 Montreal St, Christchurch, Tel: 03 260 5530, Freephone: 0800 121280  
email: info@kingspanpanels.co.nz, www.kingspanpanels.co.nz

# EAVES GUTTER DETAIL



SYSTEM KS1000_RW_STD_WALL_HORIZONTAL_Q4_2023		
DESCRIPTION EAVES GUTTER DETAIL		
APPROVED BY JS	DATE 09.10.23	REVISION -
DRG REF: RW_HS_26	SCALE 1:5	PAPER SIZE A4

This document remains the property of Kingspan Ltd under copyright laws. Licence is granted to use this document and its contents in connection with Kingspan Ltd products only.  
©Kingspan Ltd

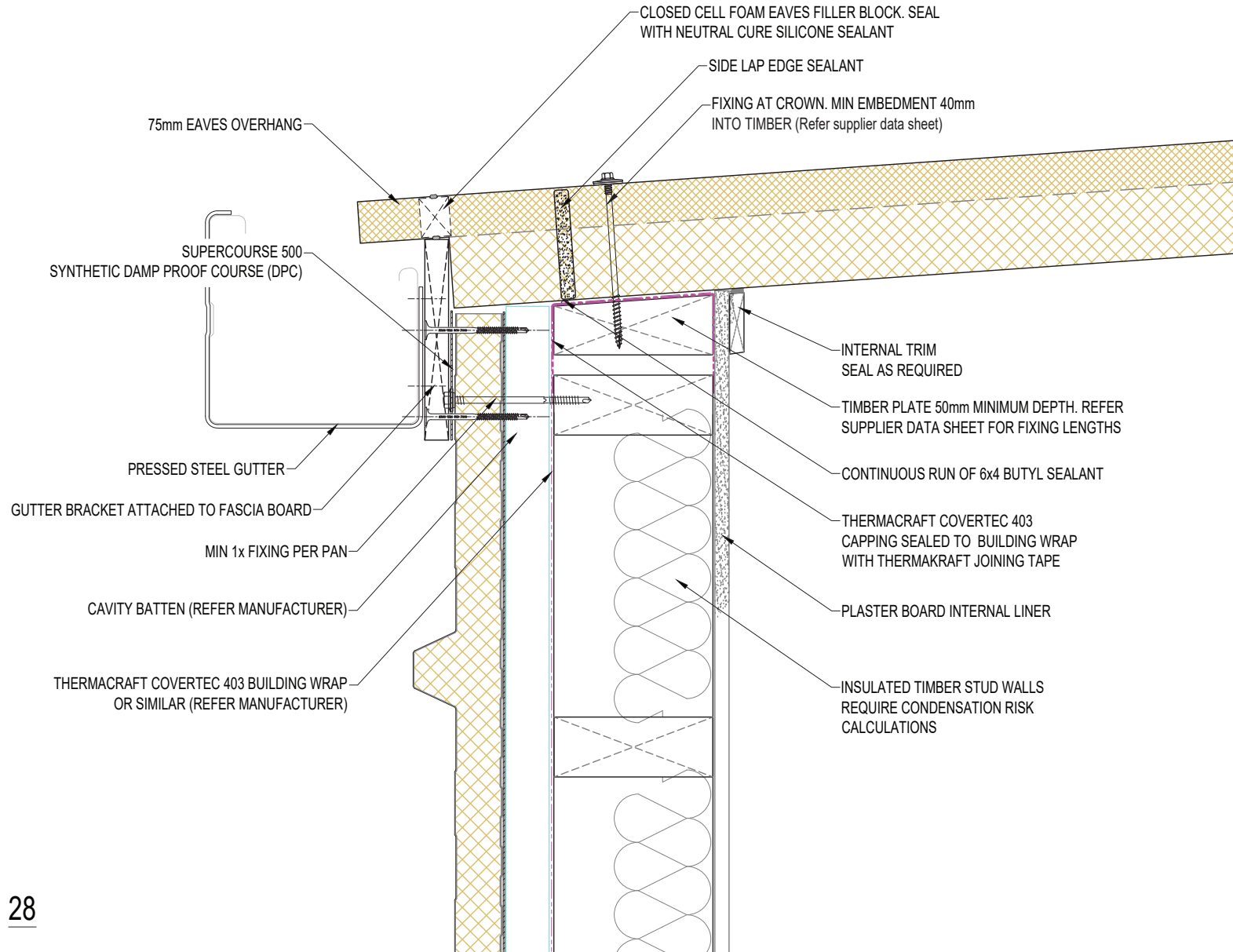
DO NOT SCALE. IF IN DOUBT ASK



New Zealand: Kingspan Ltd  
97 Montreal St, Christchurch, Tel: 03 260 5530, Freephone: 0800 121280  
email: info@kingspanpanels.co.nz, www.kingspanpanels.co.nz



# EAVES GUTTER DETAIL - BUILDING WRAP



SYSTEM KS1000 RW_STD WALL_HORIZONTAL Q4_2023		
DESCRIPTION EAVES GUTTER DETAIL - BUILDING WRAP		
APPROVED BY JS	DATE 09.10.23	REVISION -
DRG REF: RW_HS_28	SCALE 1:5	PAPER SIZE A4

This document remains the property of Kingspan Ltd under copyright laws. Licence is granted to use this document and its contents in connection with Kingspan Ltd products only.  
©Kingspan Ltd

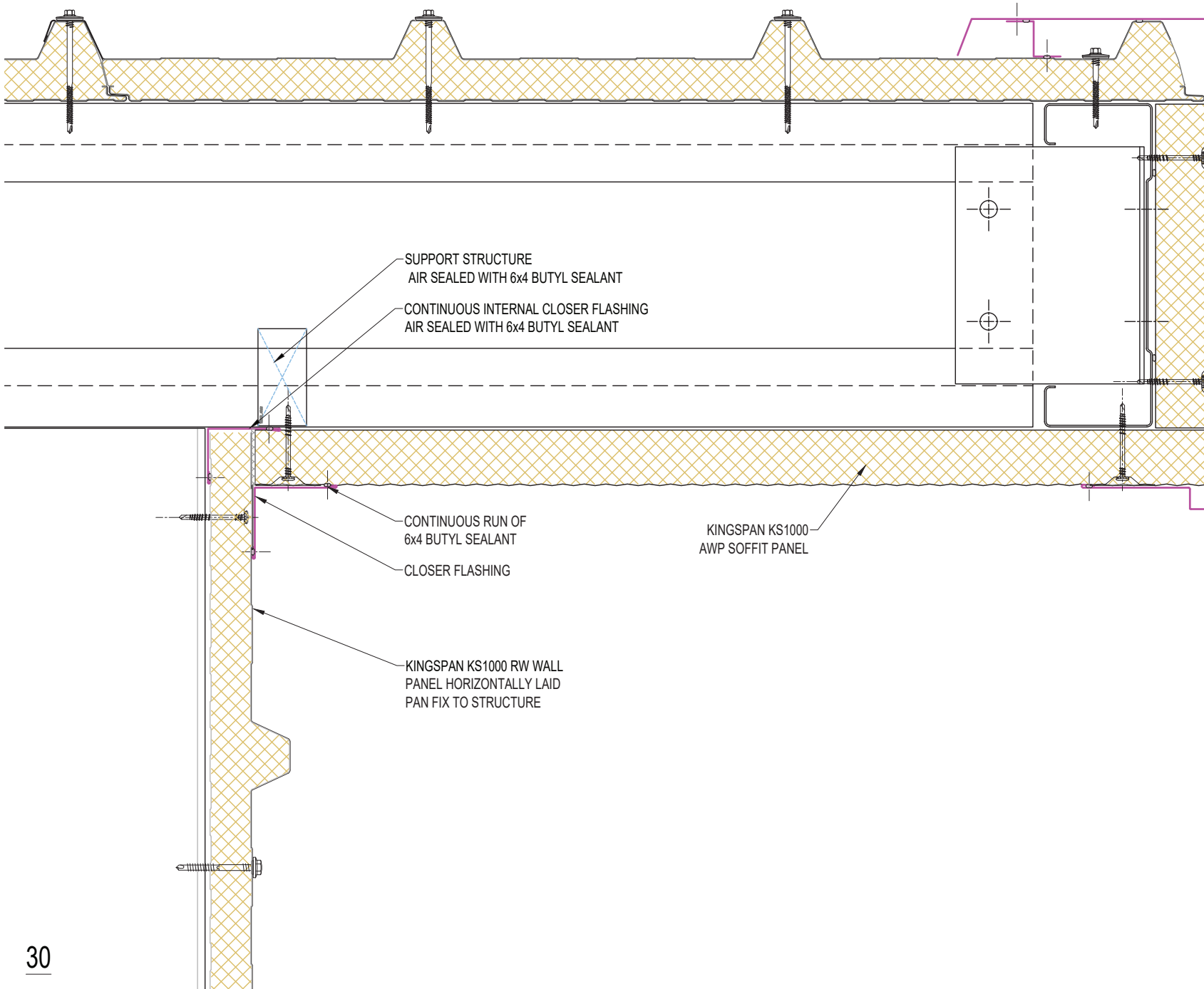
DO NOT SCALE. IF IN DOUBT ASK



New Zealand: Kingspan Ltd  
97 Montreal St, Christchurch, Tel: 03 260 5530, Freephone: 0800 121280  
email: info@kingspanpanels.co.nz, www.kingspanpanels.co.nz



# VERGE OVERHANG



SYSTEM KS1000_RW_STD_WALL_HORIZONTAL_Q4_2023		
DESCRIPTION VERGE OVERHANG		
APPROVED BY JS	DATE 09.10.23	REVISION -
DRG REF: RW_HS_30	SCALE 1:5	PAPER SIZE A4

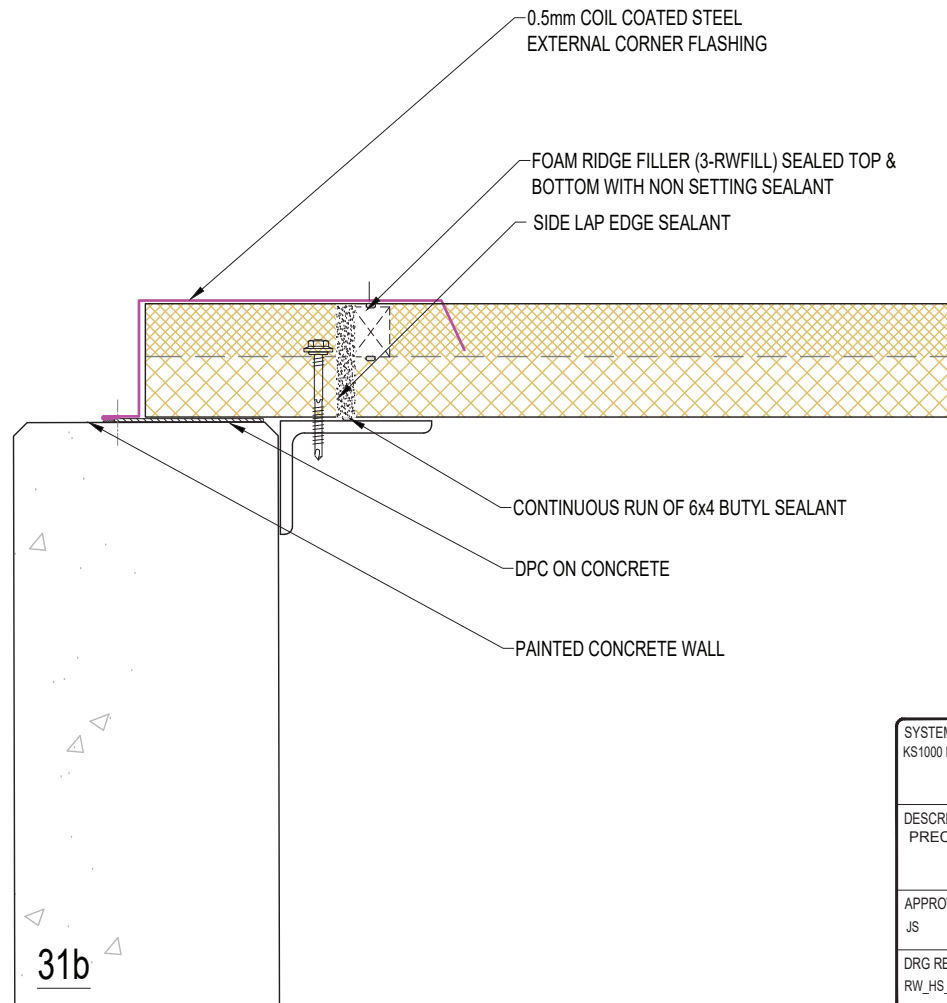
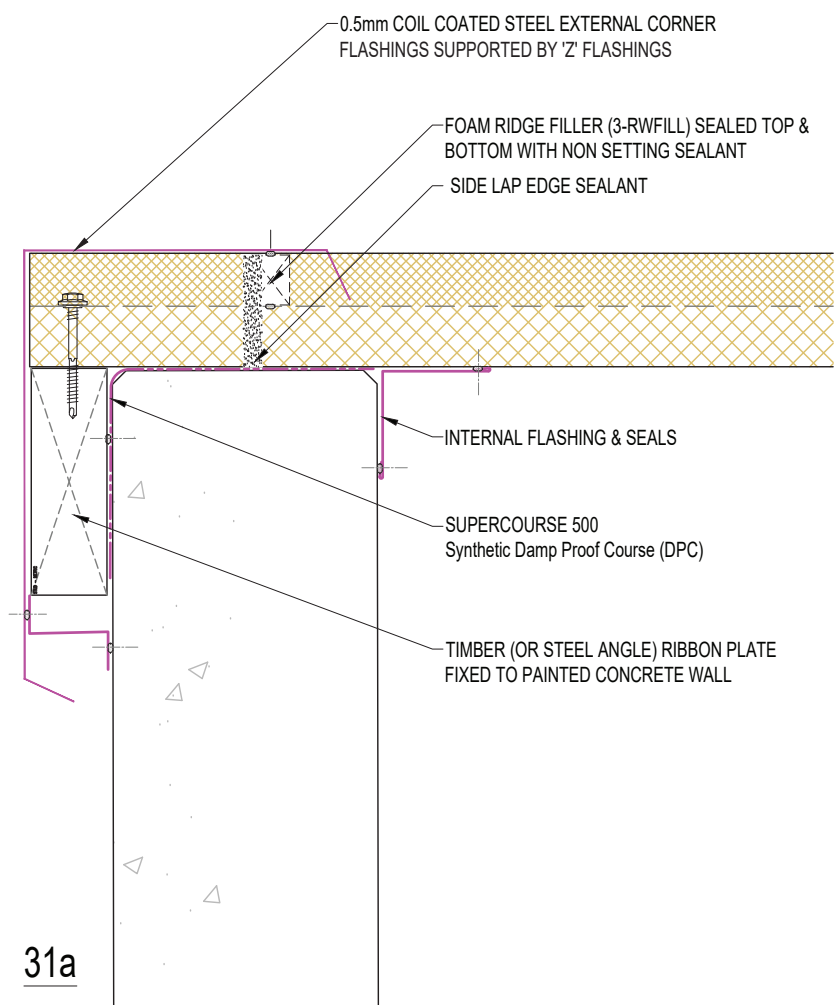
This document remains the property of Kingspan Ltd under copyright laws. Licence is granted to use this document and its contents in connection with Kingspan Ltd products only.  
©Kingspan Ltd

DO NOT SCALE. IF IN DOUBT ASK



New Zealand: Kingspan Ltd  
97 Montreal St, Christchurch, Tel: 03 260 5530, Freephone: 0800 121280  
email: info@kingspanpanels.co.nz, www.kingspanpanels.co.nz

# PRECAST WALL - EXTERNAL CORNER\_1



SYSTEM KS1000 RW_STD WALL_HORIZONTAL Q4_2023		
DESCRIPTION PRECAST WALL - EXTERNAL CORNER_1		
APPROVED BY JS	DATE 09.10.23	REVISION -
DRG REF: RW_HS_31	SCALE 1:5	PAPER SIZE A4

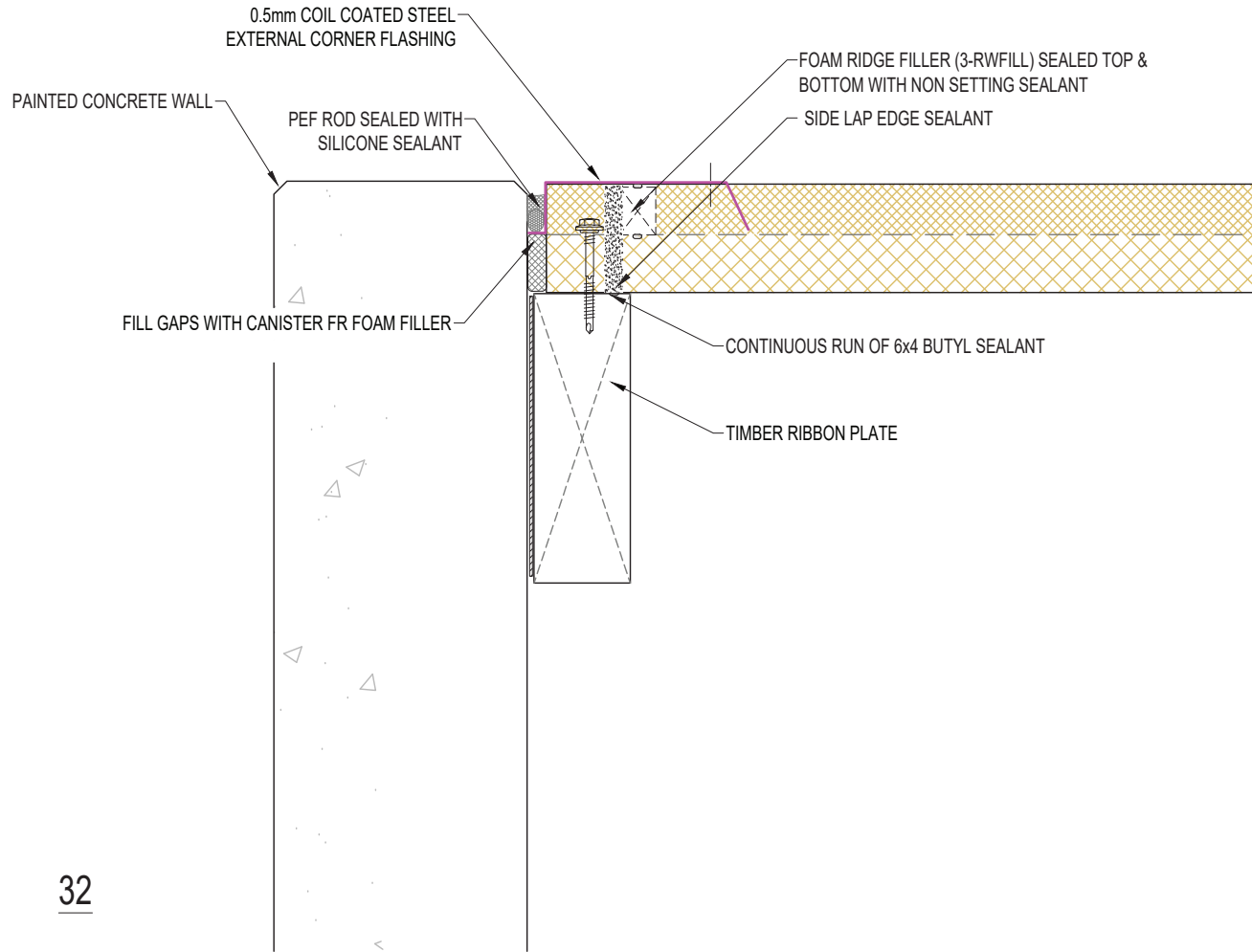
This document remains the property of Kingspan Ltd under copyright laws. Licence is granted to use this document and its contents in connection with Kingspan Ltd products only.  
©Kingspan Ltd

DO NOT SCALE. IF IN DOUBT ASK



New Zealand: Kingspan Ltd  
97 Montreal St, Christchurch, Tel: 03 260 5530, Freephone: 0800 121280  
email: info@kingspanpanels.co.nz, www.kingspanpanels.co.nz

# PRECAST WALL - EXTERNAL CORNER\_2



32

SYSTEM KS1000_RW_STD WALL_HORIZONTAL Q4_2023		
DESCRIPTION PRECAST WALL - EXTERNAL CORNER_2		
APPROVED BY JS	DATE 09.10.23	REVISION -
DRG REF: RW_HS_32	SCALE 1:5	PAPER SIZE A4
This document remains the property of Kingspan Ltd under copyright laws. Licence is granted to use this document and its contents in connection with Kingspan Ltd products only. ©Kingspan Ltd		

DO NOT SCALE. IF IN DOUBT ASK

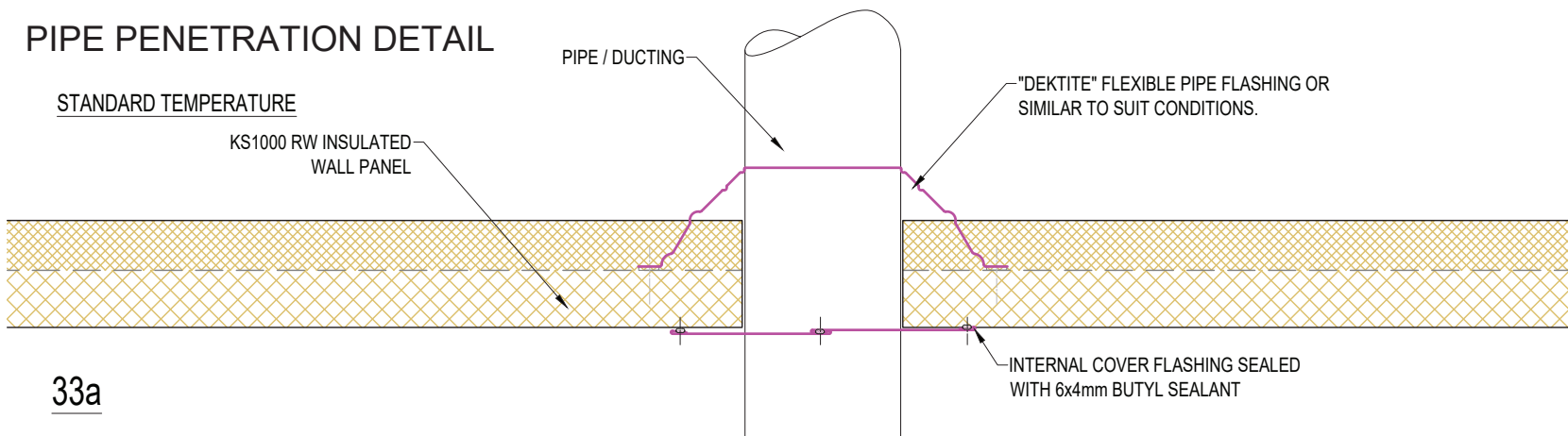


New Zealand: Kingspan Ltd  
97 Montreal St, Christchurch, Tel: 03 260 5530, Freephone: 0800 121280  
email: info@kingspanpanels.co.nz, www.kingspanpanels.co.nz



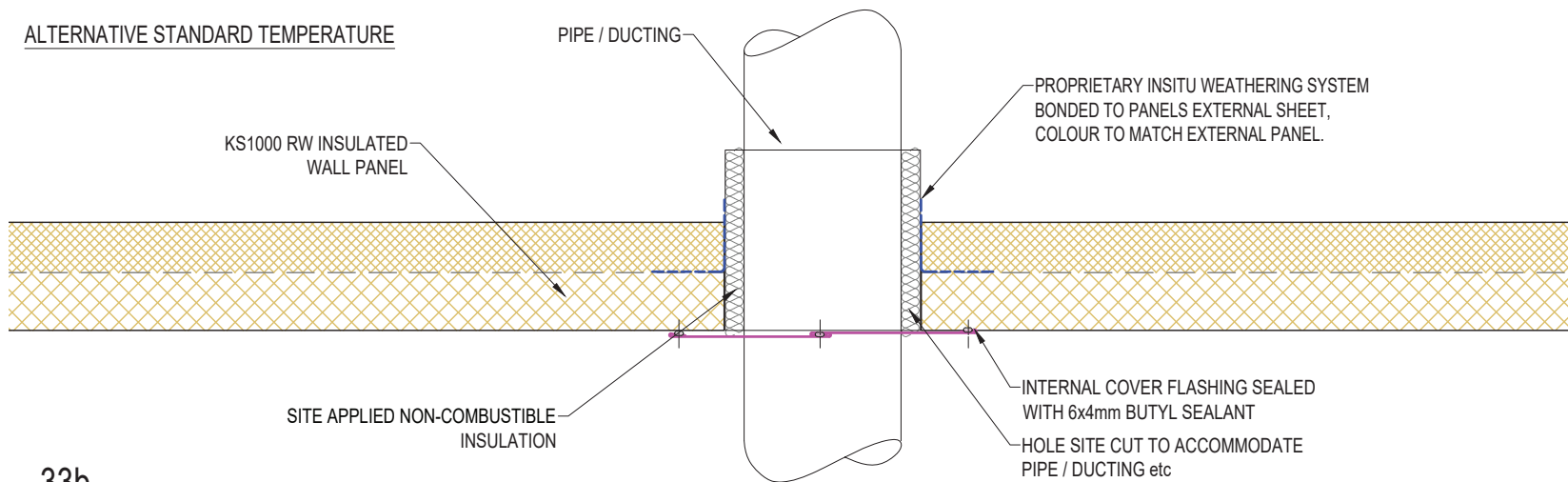
# PIPE PENETRATION DETAIL

## STANDARD TEMPERATURE



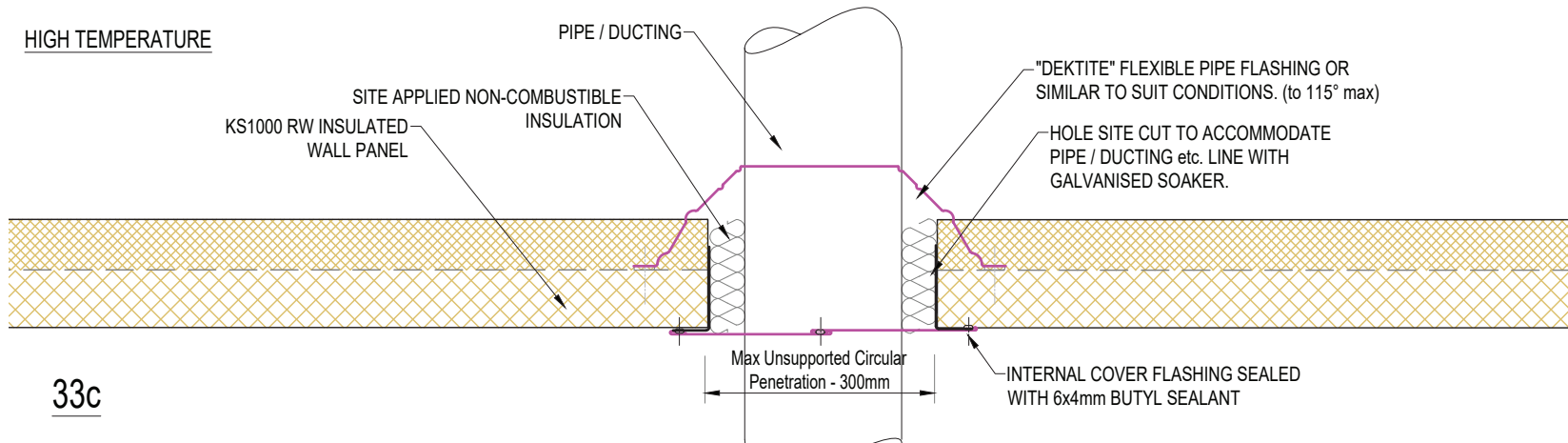
33a

## ALTERNATIVE STANDARD TEMPERATURE



33b

## HIGH TEMPERATURE



33c

NOTE: MAXIMUM CIRCULAR HOLE SIZE TO BE 300mm. PENETRATIONS GREATER WILL REQUIRE ADDITIONAL SUPPORTING STEEL

SYSTEM KS1000 RW_STD WALL_HORIZONTAL Q4_2023		
DESCRIPTION PIPE PENETRATION DETAIL		
APPROVED BY JS	DATE 09.10.23	REVISION -
DRG REF: RW_HS_33	SCALE 1:5	PAPER SIZE A4

This document remains the property of Kingspan Ltd under copyright laws. Licence is granted to use this document and its contents in connection with Kingspan Ltd products only.  
©Kingspan Ltd

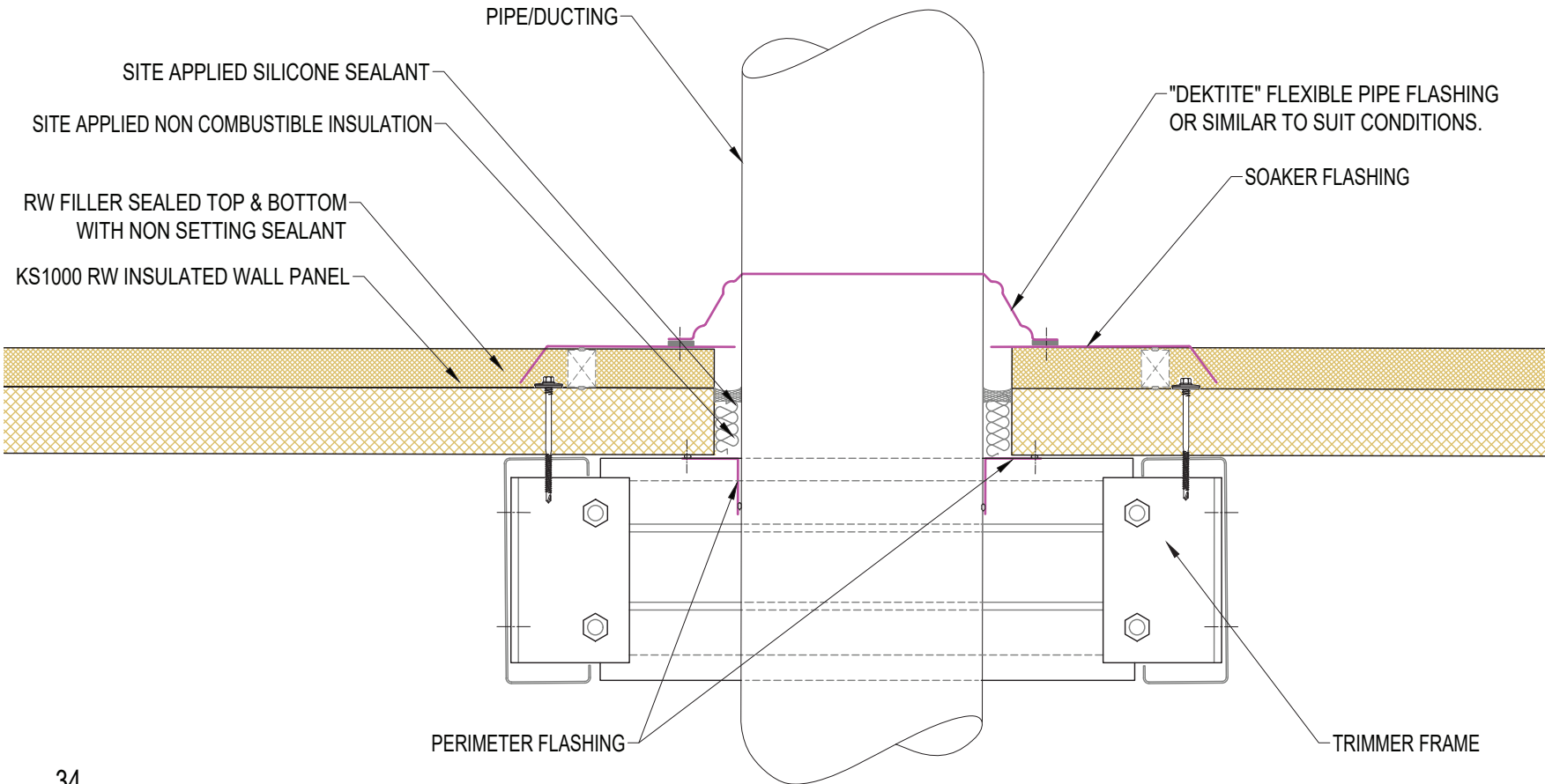
DO NOT SCALE. IF IN DOUBT ASK



New Zealand: Kingspan Ltd  
97 Montreal St, Christchurch, Tel: 03 260 5530, Freephone: 0800 121280  
email: info@kingspanpanels.co.nz, www.kingspanpanels.co.nz

# PIPE PENETRATION DETAIL

NOTE: MAXIMUM CIRCULAR HOLE SIZE TO BE 300mm.  
PENETRATIONS GREATER WILL REQUIRE ADDITIONAL  
SUPPORTING STEEL



SYSTEM KS1000 RW_STD WALL_HORIZONTAL Q4_2023		
DESCRIPTION PIPE PENETRATION DETAIL		
APPROVED BY JS	DATE 09.10.23	REVISION -
DRG REF: RW_HS_34	SCALE 1:5	PAPER SIZE A4

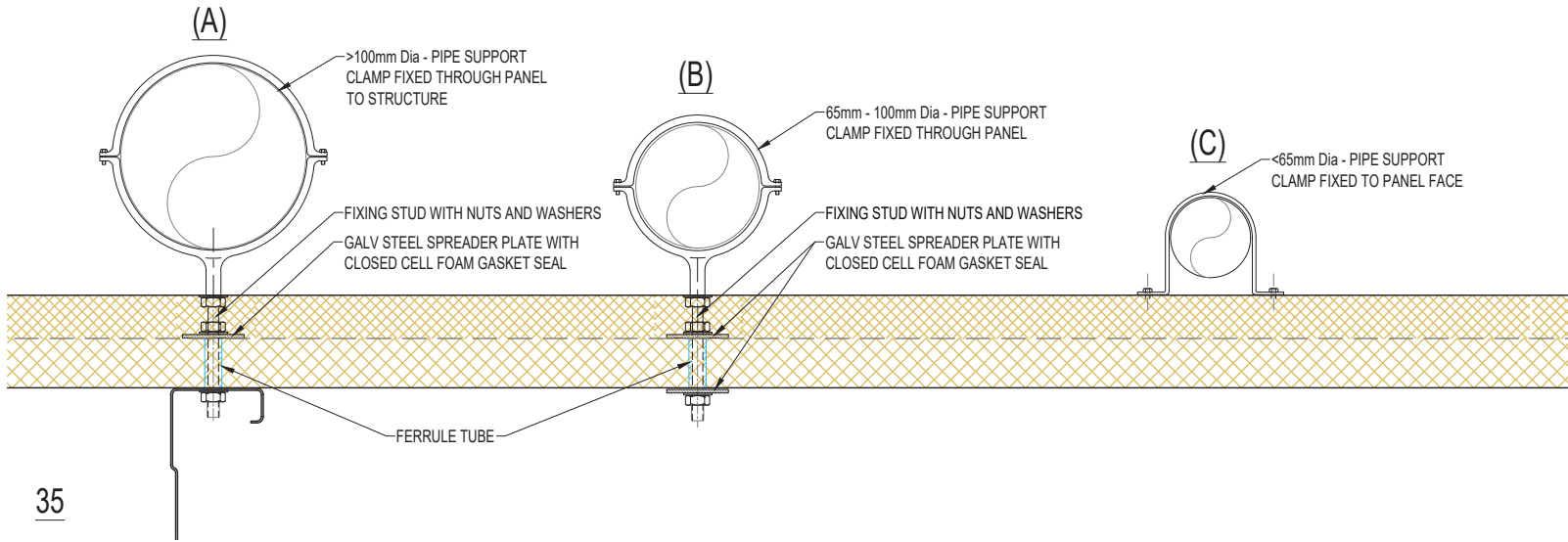
This document remains the property of Kingspan Ltd under copyright laws. Licence is granted to use this document and its contents in connection with Kingspan Ltd products only.  
©Kingspan Ltd

DO NOT SCALE. IF IN DOUBT ASK



New Zealand: Kingspan Ltd  
97 Montreal St, Christchurch, Tel: 03 260 5530, Freephone: 0800 121280  
email: info@kingspanpanels.co.nz www.kingspanpanels.co.nz

# PIPE SUPPORT DETAIL HORIZ. SECTION



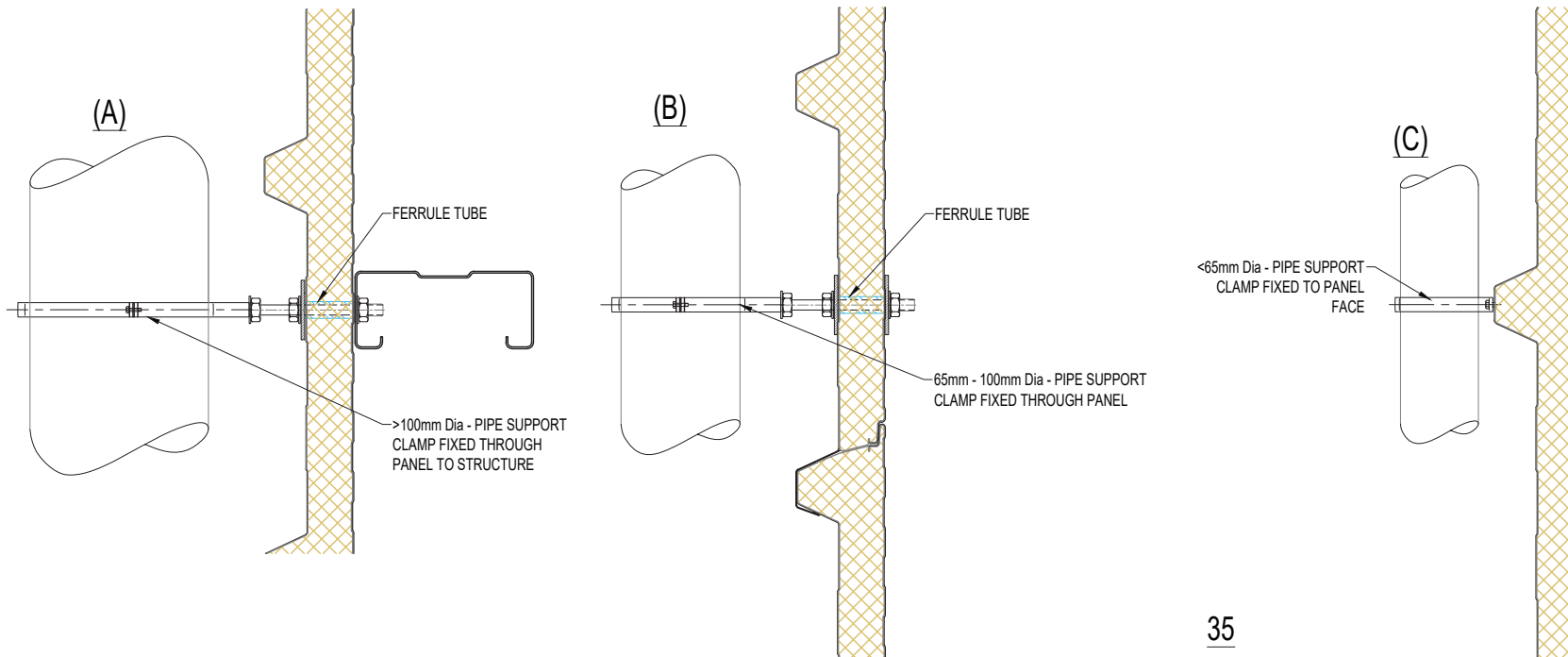
35

PIPE WEIGHTS ARE INDICATIVE ONLY.

FOR LIGHT PIPES; THE FORCE APPLIED TO THE CONNECTION SHOULD NOT EXCEED 0.3kN.

FOR MEDIUM WEIGHT PIPES; THE FORCE APPLIED SHOULD NOT EXCEED 2.8kN AND THE PANEL SPAN NEEDS TO BE CHECKED BASED IN THE NEW POINT LOAD.

FIX DOWN-PIPES & OTHER ANCILLARY ITEMS THROUGH PANEL WITH A SUPPORT FERRULE TO PREVENT COMPRESSION OF THE PANEL CORE (EXAMPLE ONLY. DETAIL DESIGN BY OTHERS)



35

SYSTEM KS1000_RW_STD_WALL_HORIZONTAL_Q4_2023		
DESCRIPTION PIPE SUPPORT DETAIL HORIZ. SECTION		
APPROVED BY JS	DATE 09.10.23	REVISION -
DRG REF: RW_HS_35	SCALE NTS	PAPER SIZE A4

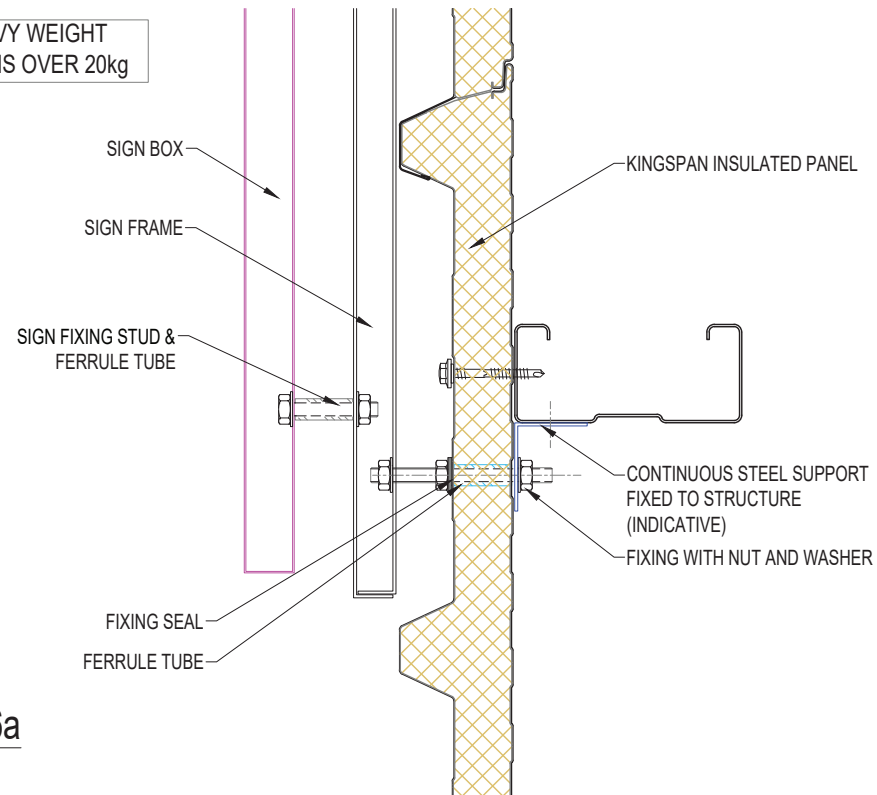
This document remains the property of Kingspan Ltd under copyright laws. Licence is granted to use this document and its contents in connection with Kingspan Ltd products only.  
©Kingspan Ltd

DO NOT SCALE. IF IN DOUBT ASK

New Zealand: Kingspan Ltd  
97 Montreal St, Christchurch, Tel: 03 260 5530, Freephone: 0800 121280  
email: info@kingspanpanels.co.nz, www.kingspanpanels.co.nz

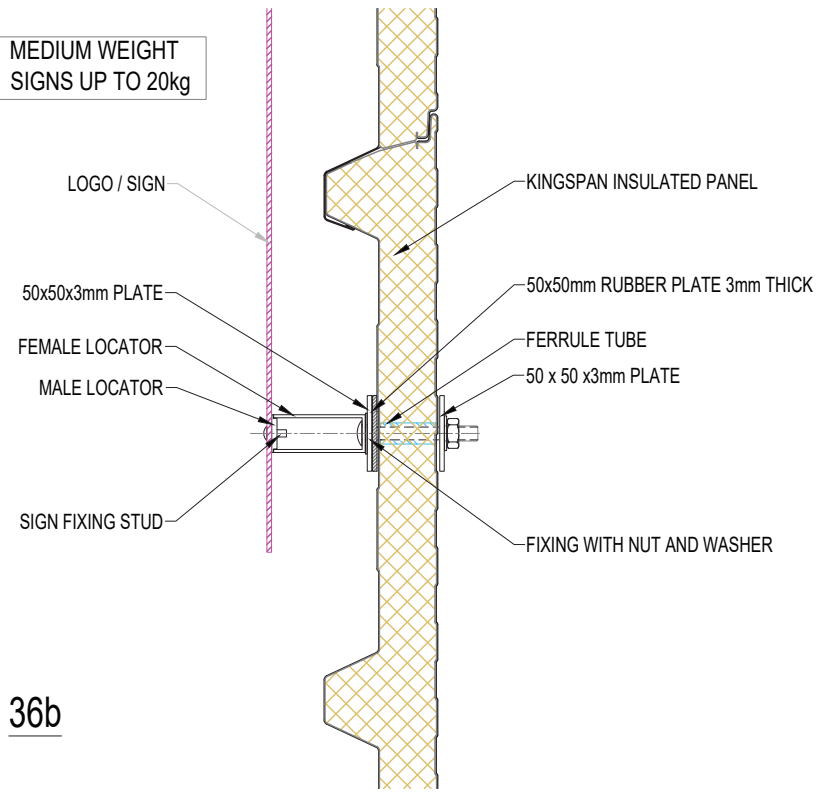
# SIGNAGE SUPPORT DETAILS VERT. SECTION

HEAVY WEIGHT  
SIGNS OVER 20kg



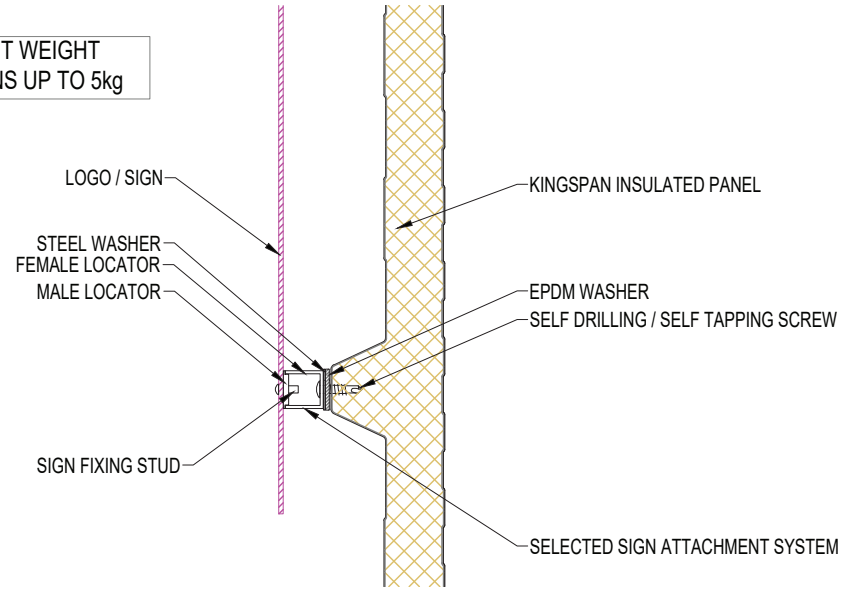
36a

MEDIUM WEIGHT  
SIGNS UP TO 20kg



36b

LIGHT WEIGHT  
SIGNS UP TO 5kg




36c

SIGN WEIGHTS ARE INDICATIVE ONLY.

FOR LIGHT SIGNS; THE FORCE APPLIED TO THE CONNECTION SHOULD NOT EXCEED 0.3kN.

FOR MEDIUM WEIGHT SIGNS; THE FORCE APPLIED SHOULD NOT EXCEED 2.8kN AND THE PANEL SPAN NEEDS TO BE CHECKED BASED IN THE NEW POINT LOAD.

NOTE: IT IS THE INSTALLER'S RESPONSIBILITY TO ENSURE THAT SIGN MATERIALS AND FIXINGS ARE COMPATIBLE WITH KINGSPAN PANELS

SYSTEM KS1000 RW_STD WALL_HORIZONTAL Q4_2023		
DESCRIPTION SIGNAGE SUPPORT DETAILS VERT. SECTION		
APPROVED BY JS	DATE 09.10.23	REVISION -
DRG REF: RW_HS_36	SCALE 1:5	PAPER SIZE A4
This document remains the property of Kingspan Ltd under copyright laws. Licence is granted to use this document and its contents in connection with Kingspan Ltd products only. ©Kingspan Ltd		
DO NOT SCALE. IF IN DOUBT ASK		
 <p>New Zealand: Kingspan Ltd 97 Montreal St, Christchurch, Tel: 03 260 5530, Freephone: 0800 121280 email: info@kingspanpanels.co.nz, www.kingspanpanels.co.nz</p>		