

SHOWER:
VERONA SLIDING SYSTEM

CALL: (09) 624-1180
www.euroglass.co.nz



SS30 Verona sliding shower kits

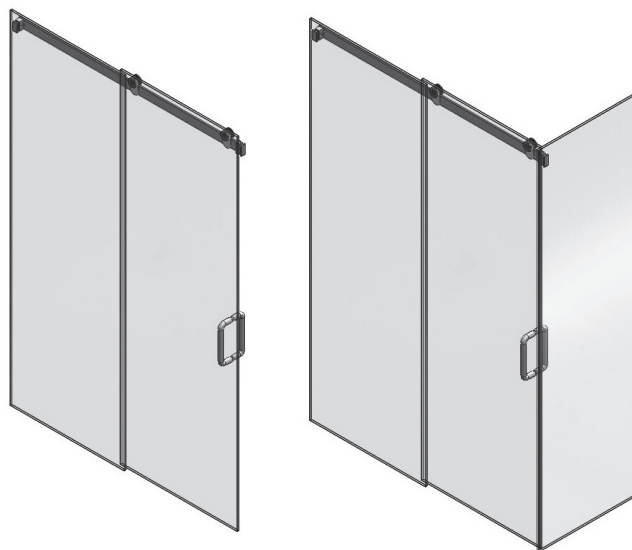
AVAILABLE FINISHES

- Satin stainless steel
- Polished stainless steel

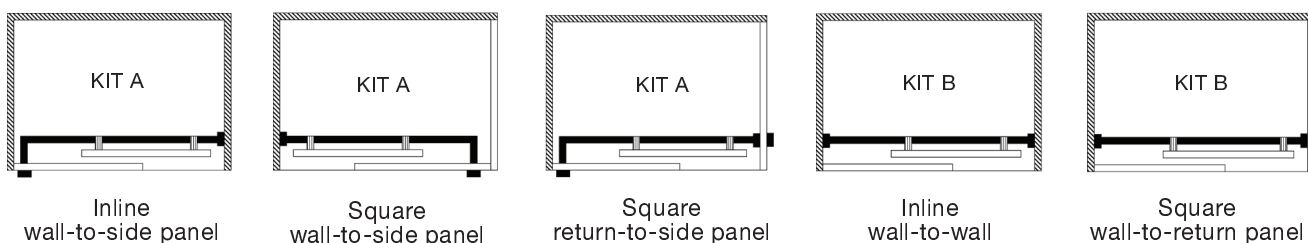
TECHNICAL DETAILS

Manufactured in stainless steel
Designed for 10mm toughened glass
Suitable for both inline and square showers
Able to be fixed to glass or solid walls
Maximum hanger load 45kg per door
Rail is a rectangular hollow section
Rail height 50mm, thickness 10mm

Custom kits available upon request



STANDARD SHOWER CONFIGURATIONS

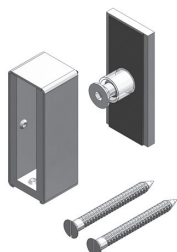


KIT A or B supplied based on the shower configurations above

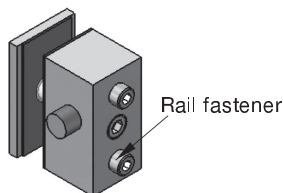
KIT A Door opening 600mm Rail length 1350mm	KIT B Specify tight opening size upon ordering Max opening width 1400mm
1 x Rail	1 x Rail
1 x Glass/Wall Mount	2 x Glass/Wall Mounts
1 x Side Panel Mount/Stop	2 x Hangers
2 x Hangers	1 x Adjustable Stop
1 x Rail End Plug	1 x Door Seals (3m)
1 x Door Seal (3m)	1 x Floor Guide
1 x Floor Guide	



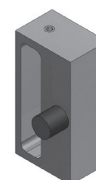
SS30H
Hanger



SS30WM
Glass/Wall Mount



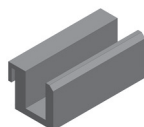
SS30SM
Side Panel Mount/Stop



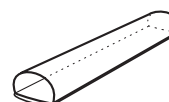
SS30AS
Adjustable Stop



SS30RAIL
Rail

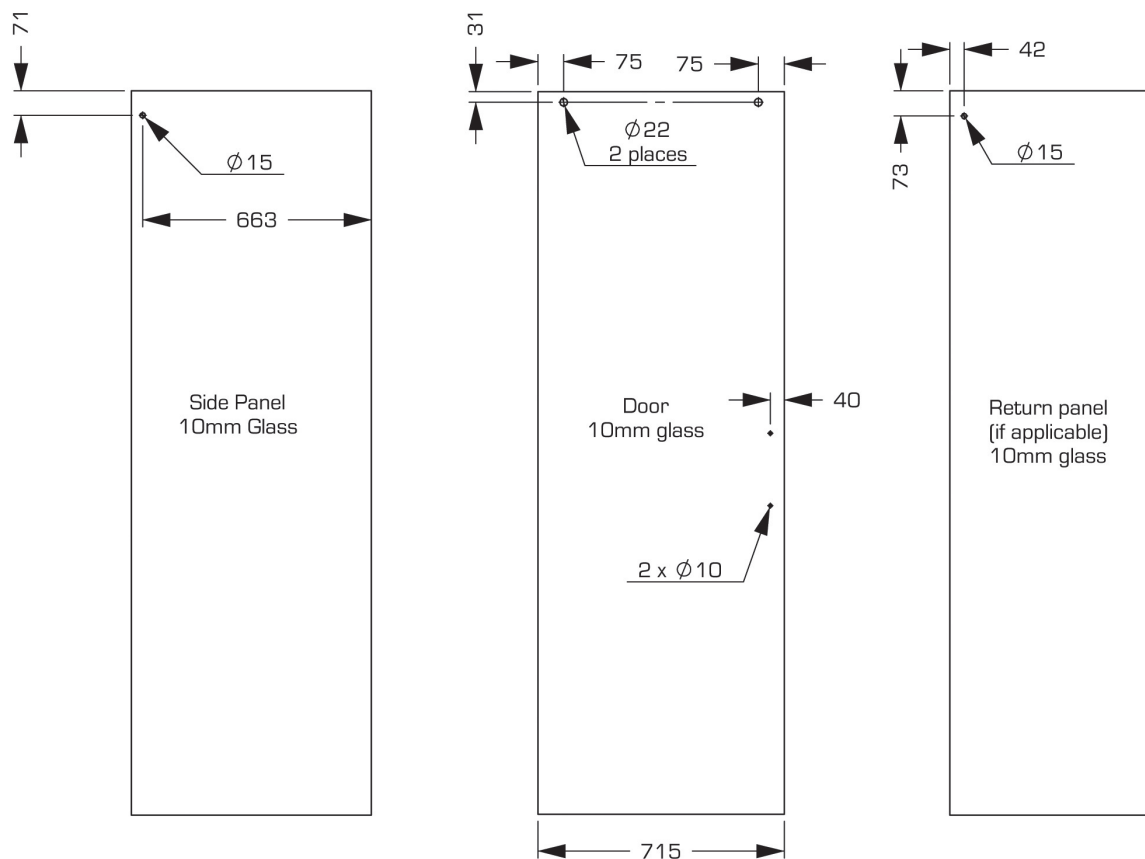
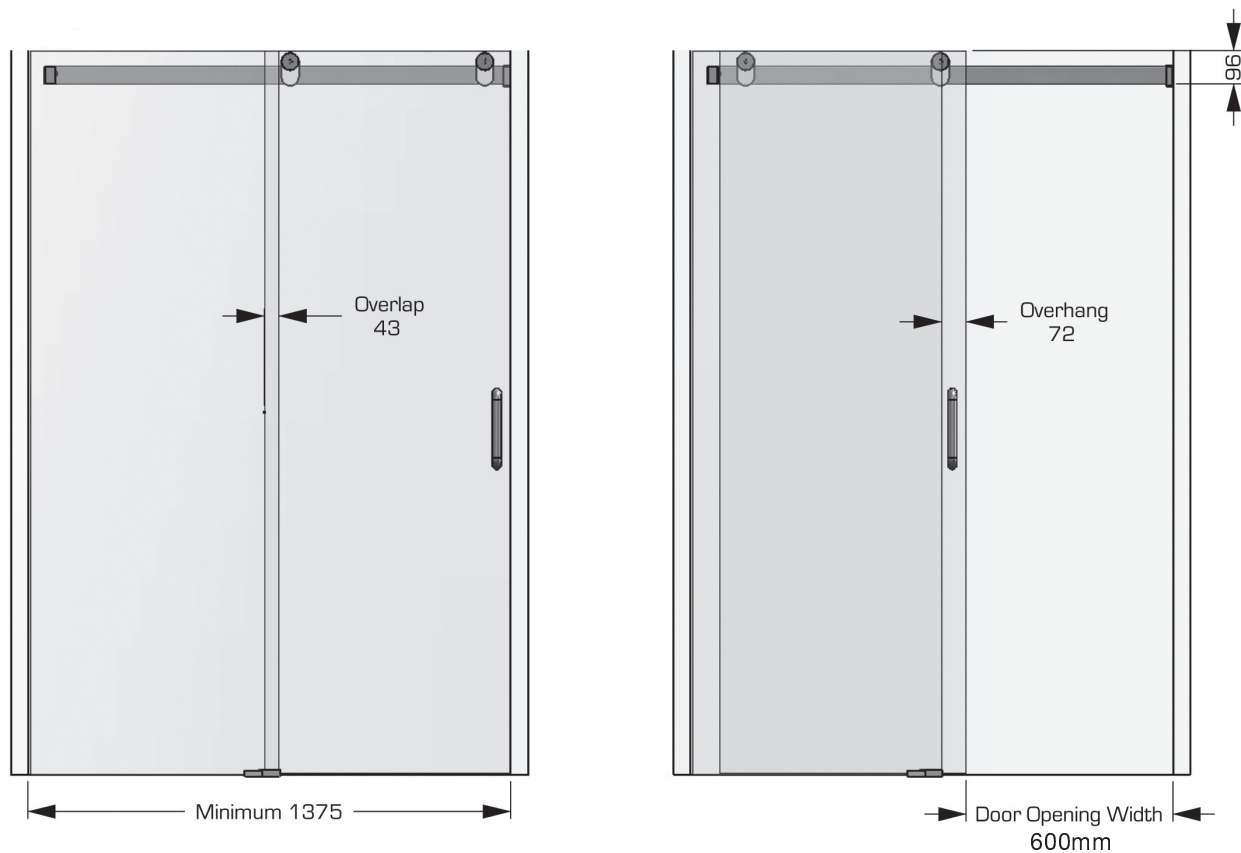


SSG10
Floor Guide



DS4
Door Seal (3m length)

SS30 Verona sliding shower kits
GLASS CUTOUT DETAIL: KIT A



SS30 Verona sliding shower kits
GLASS CUTOUT DETAIL: KIT B

