

NOTES:

1. This proprietary pool fence complies with New Zealand Building Code Clauses B1 Structure, F2 Hazardous Building Materials and NZS 8500:2006 Safety Barriers and Fences Around Swimming Pools, Spas and Hot Tubs, subject to:

- all products meeting the required performance specification
- site installation carried out in accordance with the intent of this drawing
- minimum fence height of 1200mm from finished floor level
- pool fence does not safeguard a fall of a metre or more

2. Maximum height of glass above the Monaco clamp for wind zones are provided in the table below.

Viridian glass options are:

- a. 15mm toughened glass
- b. 17.2mm toughened laminated glass
- c. 17.52mm toughened SentryGlas laminated glass

To make allowance for the consequences of failure required by B1.3.4 of the Building Code, glass options b or c should be selected.

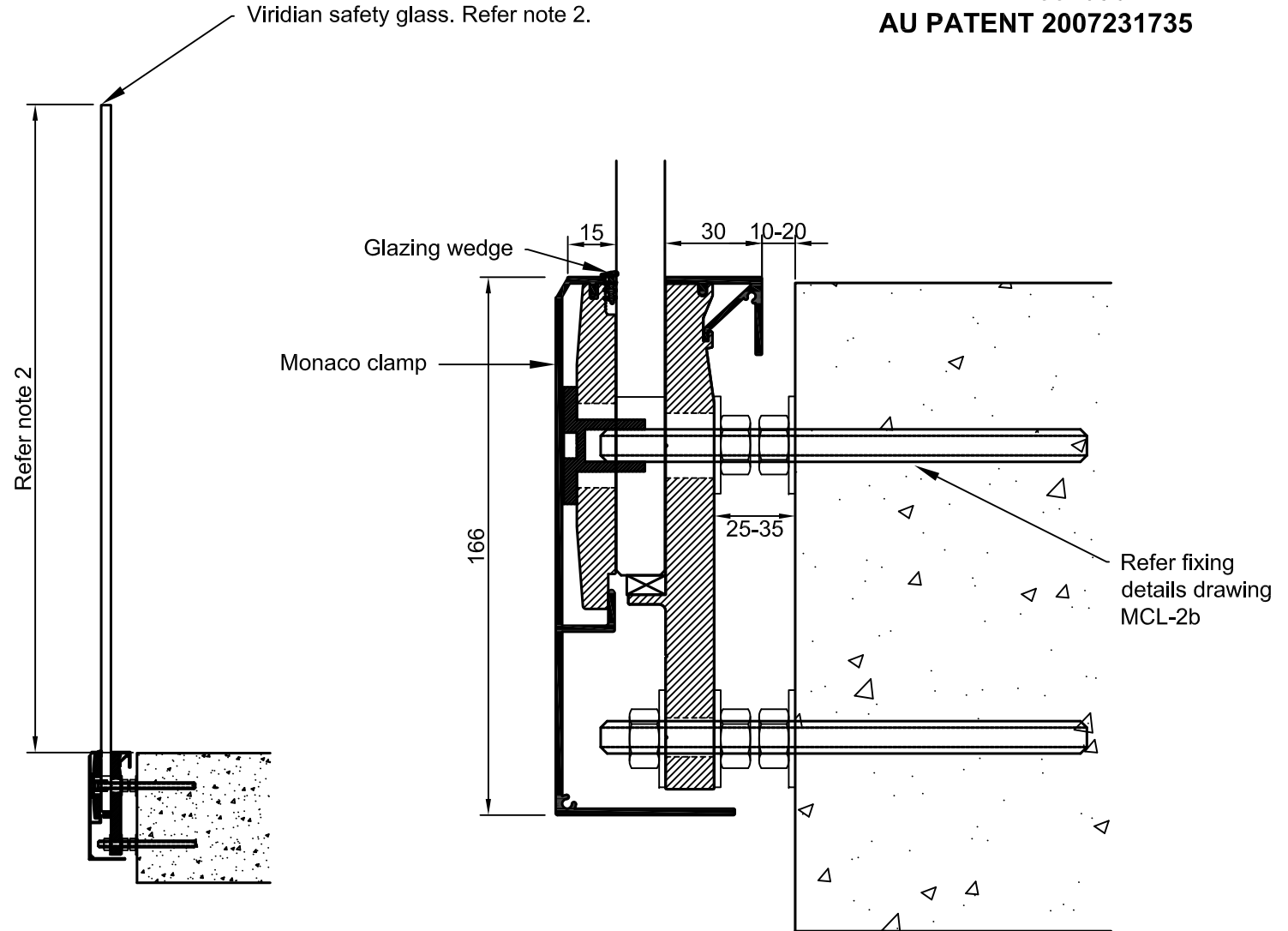
3. Concrete, timber and steel design is the responsibility of others

4. A handrail of 32-50mm diameter is required for stairs and ramps exceeding 1:20 slope. Refer NZBC D1/AS1.

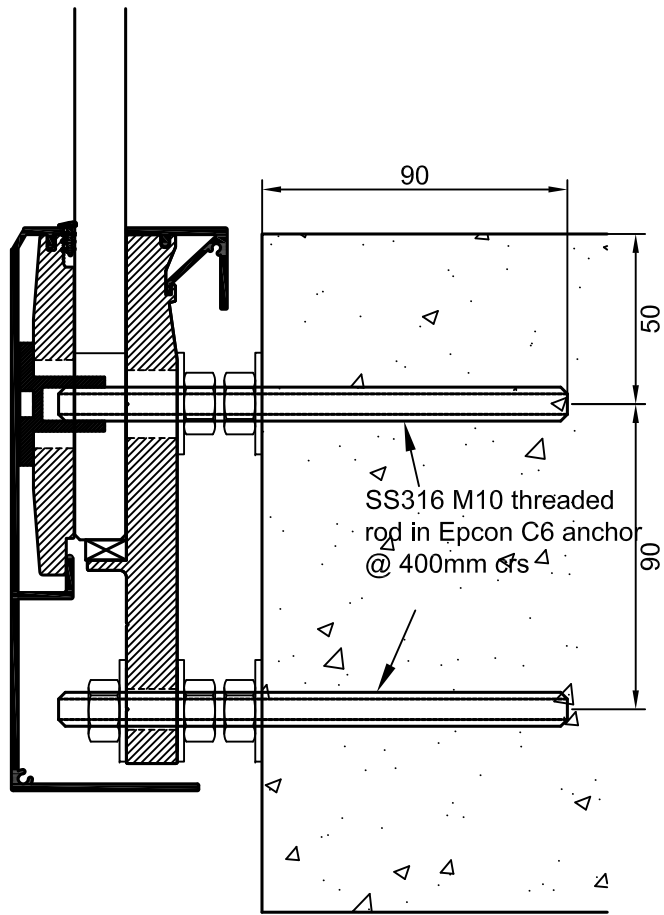
5. Minimum width of glass pane to be 1000mm unless connected by interlinking corner brackets to adjacent panes or the building.

NZ PATENT 551096
AU PATENT 2007231735

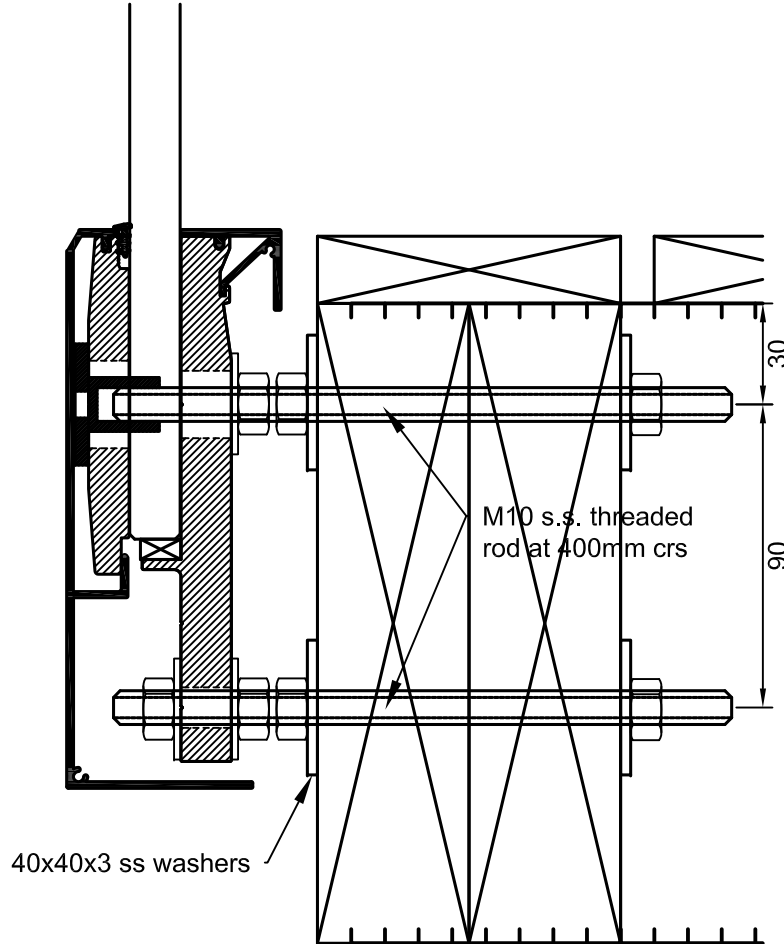
Wind zone	Maximum height, mm
Medium	1600
High	1450
Very high	1400
Extra high	1300



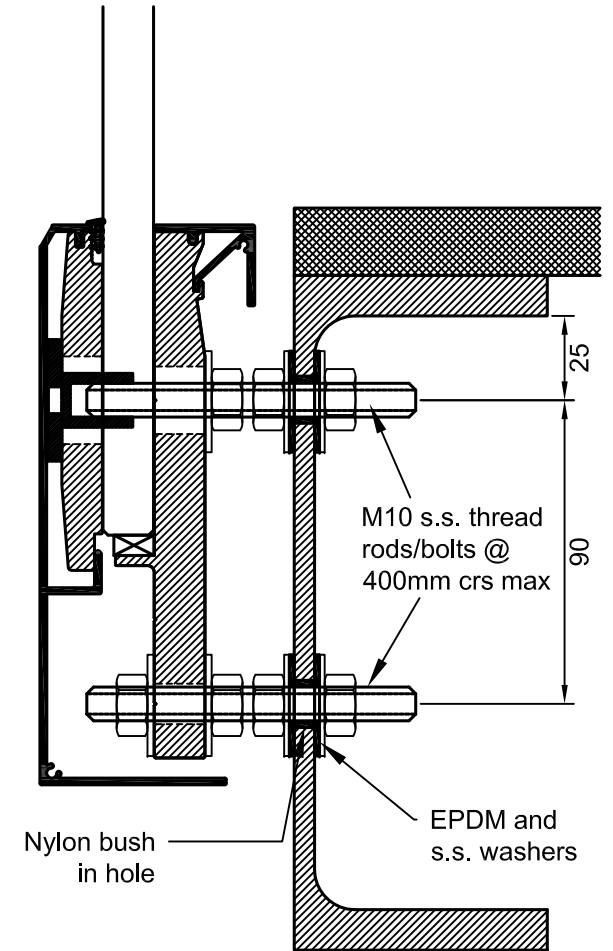
NZ PATENT 551096
AU PATENT 2007231735



FIXING DETAIL A



FIXING DETAIL B



FIXING DETAIL C