

NOTES:

1. This proprietary balustrade system complies with New Zealand Building Code Clause B1 Structure, B1/AS1 Amendment 15, B1/VM1, F2 Hazardous Building Materials and F4 Safety From Falling Third Edition, subject to:

All products meeting the required performance specification

Site installation carried out in accordance with the intent of this drawing

2. Based on barrier loads from AS/NZS 1170.1 and extra high wind zone (2.13 kPa) or less, maximum height H above floor level and safety glass options are:

For commercial occupancies C1/C2 & D of Table 3.3 AS/NZS 1170.1

Maximum height H 1100mm

Safety glass option according to 22.4.3 of NZS 4223.3:2016 are:

17.52mm SentryGlas toughened laminated glass with interlinking rail or gap clamps

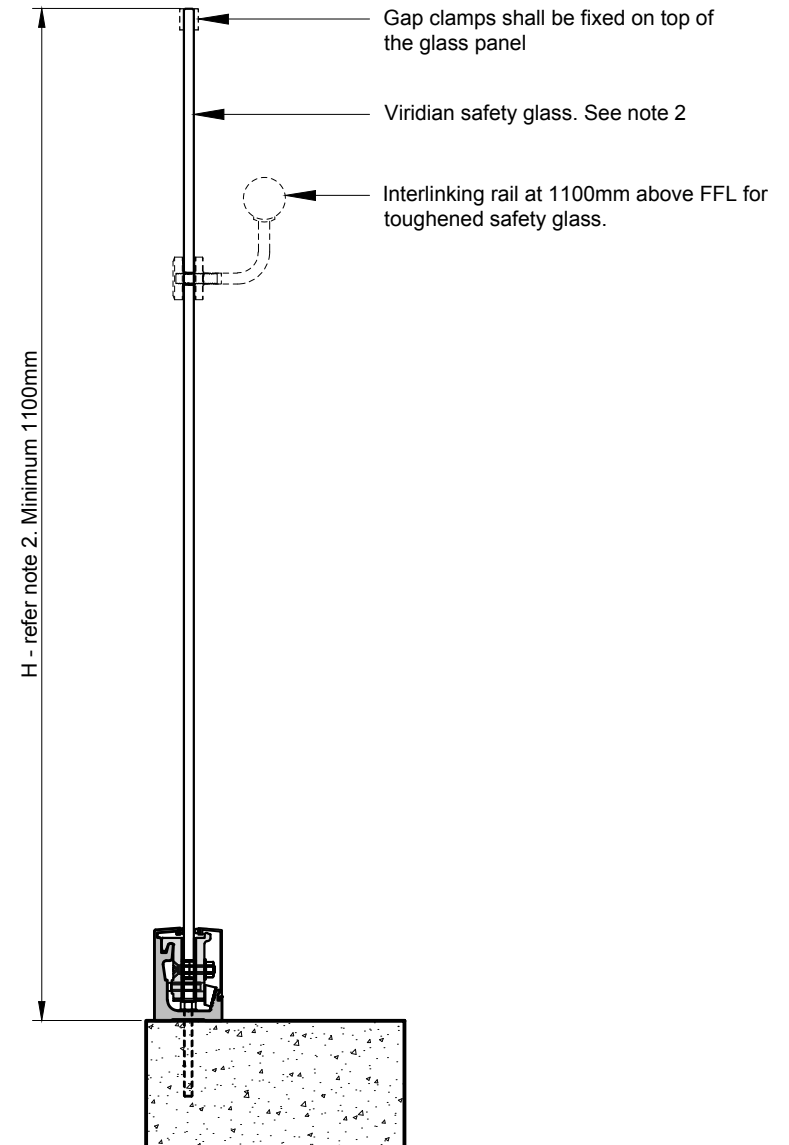
Interlinking rail or gap clamps must be connected to each glass pane, structural post, or building element as required by NZS 4223.3:2016

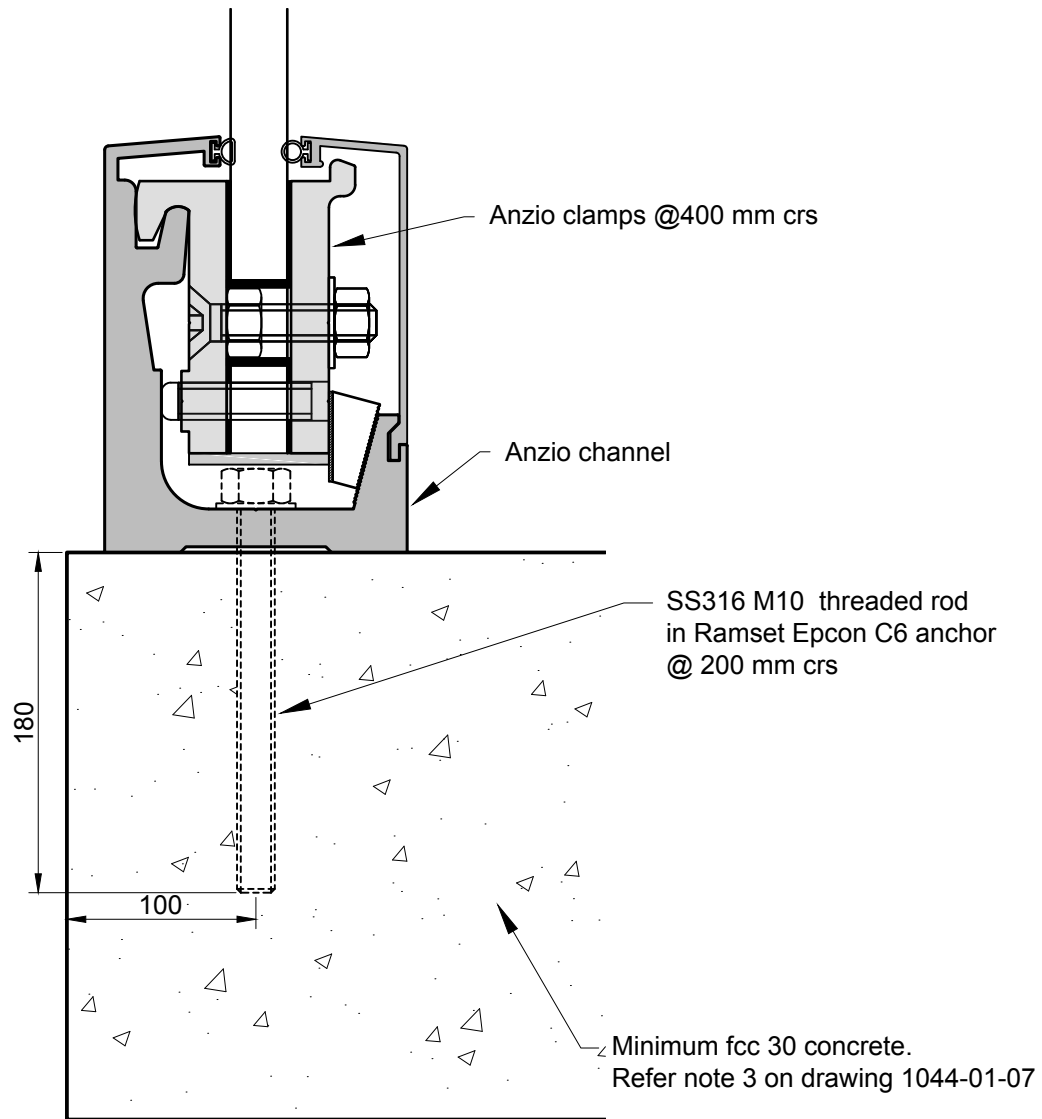
3. Concrete and steel design is the responsibility of others.

4. A handrail of 32-50mm diameter is required for stairs and ramps exceeding 1:20 slope. Fit handrail between 900mm and 1000mm above the pitchline. Refer NZBC D1/AS1.

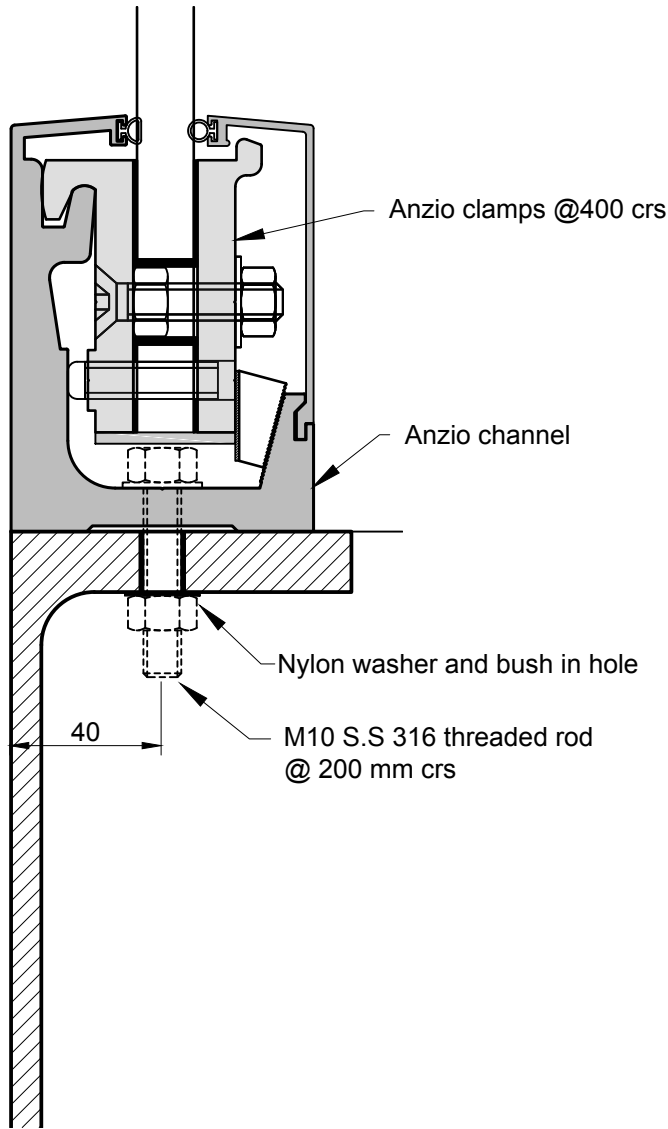
5. The distance between the base fixing and the end of the channel or a joint must not exceed 200mm.

DO NOT INSTALL THIS BALUSTRADE SYSTEM OVER WATERPROOFING MEMBRANE

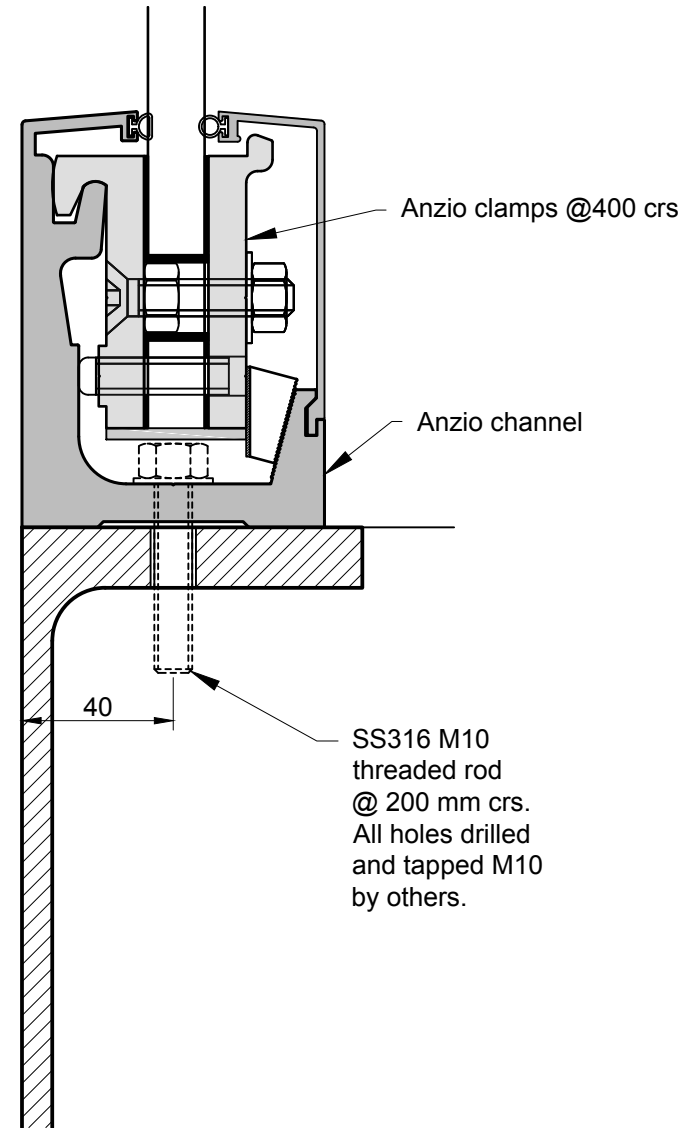




FIXING DETAIL A - CONCRETE



FIXING DETAIL A



FIXING DETAIL B
FOR INTERNAL INSTALLATION ONLY