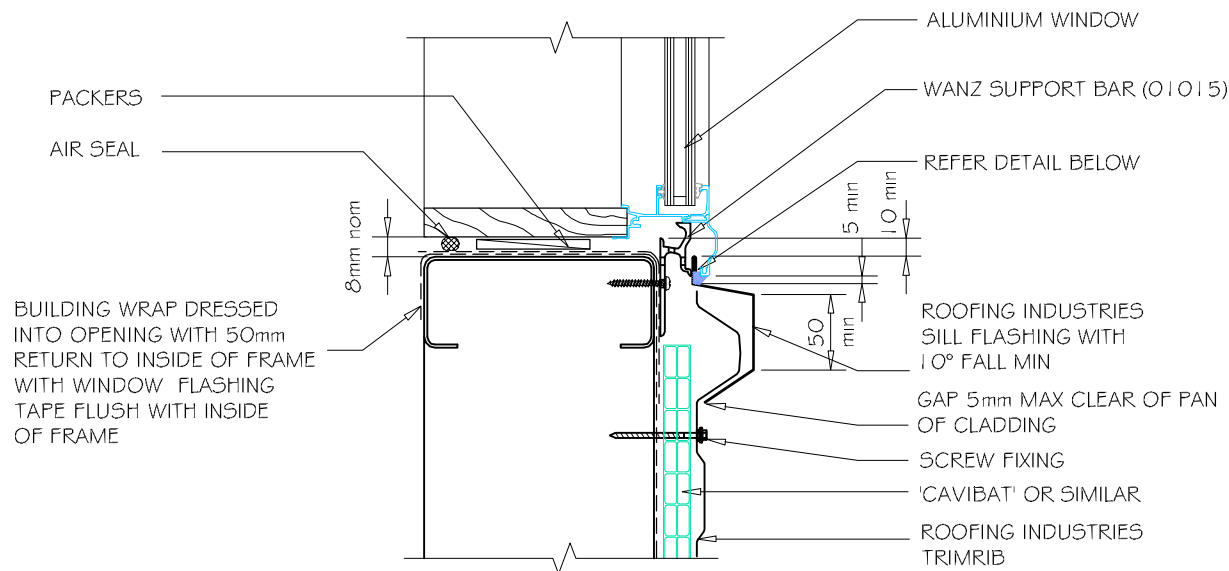


COMMERCIAL TRIMRIB WINDOW / DOOR SILL FLASHING FOR HORIZONTAL CLADDING ON CAVITY. (Recessed Window/Door)

DETAIL NO. CTW032C
DATE DRAWN 16/08/12
FILE REFERENCE RI-CTW032C.DWG

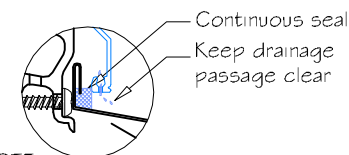
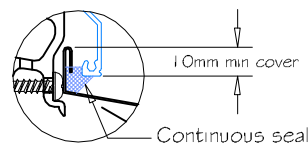
GENERAL NOTES:

- (1) REFER TO E2/AS1 OR WANZ WIS FOR GENERAL WINDOW OPENING FOR WRAPPING OF FRAMED OPENING PRIOR TO WINDOW INSTALLATION.
- (2) WINDOW PROFILE TO BE SELECTED TO ACHIEVE COVER SHOWN IN DETAILS.
- (3) ARCHITRAVES ARE SHOWN FOR CONSISTENCY ONLY, DETAIL MAY BE USED WITH REBATED LINER.
- (4) WHERE SUPPORT BRACKETS ARE REQUIRED BY THE WINDOW MANUFACTURER TO CARRY THE FRAME AND GLAZING LOADS THEY MUST BE SUPPLIED AS AN INTEGRAL PART OF THE WINDOW MANUFACTURER'S RECOMMENDATIONS.
- (5) LIASE WITH WINDOW MANUFACTURER PRIOR TO INSTALLATION.

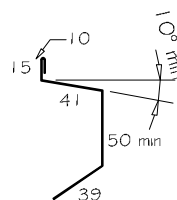


NOTES:

- These details are generally in compliance with the NZ Metal Roof & Wall Cladding Code of Practice and in some cases specific details by 'Roofing Industries'.
- The building designer is ultimately responsible to ensure that details used meet the requirements of the NZ Building Code for the specific project.
- Details of the supporting structure are indicative only and are the responsibility of the building designer.
- Thermal break or cavity battens may be required in some circumstances.
- Underlay selection and building wrap types are the responsibility of the designer, Alternative support to galvanised netting should be used in severe coastal environments including when aluminium is used.
- These details are for Roofing Industries profile/s as nominated and may not be applicable to other profiles.
- This drawing is the copyright of 'Roofing Industries' and can only be copied or reproduced with their permission.
- Further information can be obtained from the NZ Metal Roof & Wall Cladding Code of Practice www.metalroofer.org.nz & www.roof.co.nz
- Where necessary adjust drawings for purlin battens or cavity battens.
- Details are for steel based materials, other substrate may require some changes.



NOTE:
Sill sealing method for flange
end type drainage systems



Sill flashings stop ended to
receive jamb flashings
(Dimensions are indicative only
& show minimum lap covers)

REFERENCE FLASHINGS:
NZ METAL ROOF AND WALL CLADDING
CODE OF PRACTICE NZMRM.
WANZ WIS.
DIMENSIONS ARE INDICATIVE ONLY

©COPYRIGHT DETAIL 2012

