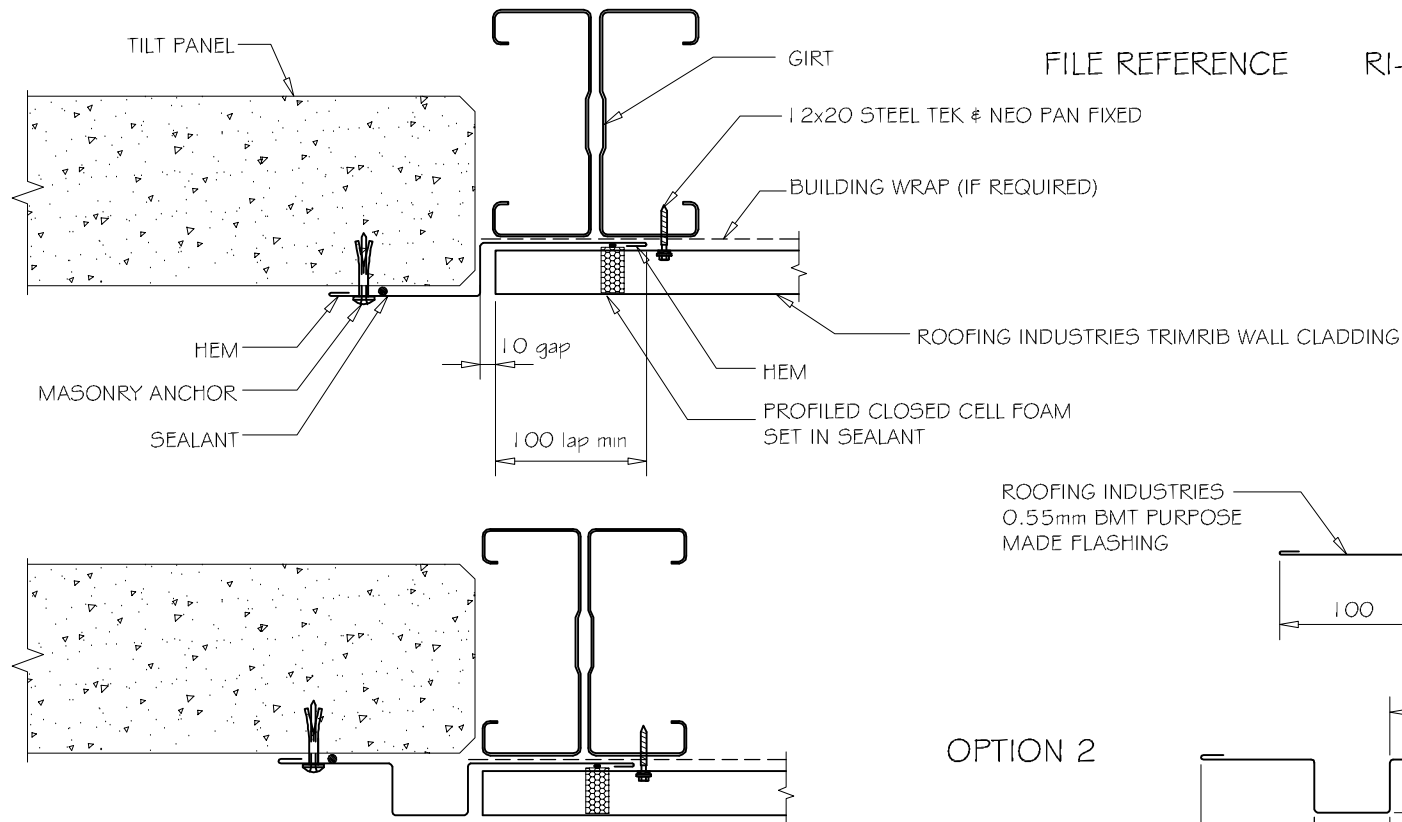
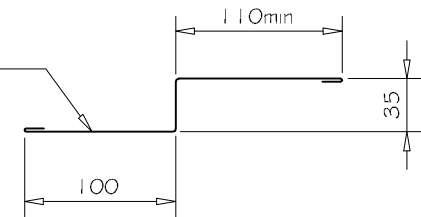


COMMERCIAL TRIMRIB WALL CLADDING TILT PANEL / HORIZONTAL CLADDING JUNCTION

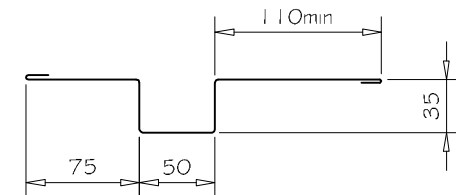
DETAIL NO. CTW029A
DATE DRAWN 02/04/12
FILE REFERENCE RI-CTW029A.DWG



ROOFING INDUSTRIES
0.55mm BMT PURPOSE
MADE FLASHING



OPTION 2



NOTES:

- These details are generally in compliance with the NZ Metal Roof & Wall Cladding Code of Practice and in some cases specific details by 'Roofing Industries'.
- The building designer is ultimately responsible to ensure that details used meet the requirements of the NZ Building Code for the specific project.
- Details of the supporting structure are indicative only and are the responsibility of the building designer.
- Thermal break or cavity battens may be required in some circumstances.
- Underlay selection and building wrap types are the responsibility of the designer. Alternative support to galvanised netting should be used in severe coastal environments including when aluminium is used.
- These details are for Roofing Industries profile/s as nominated and may not be applicable to other profiles.
- This drawing is the copyright of 'Roofing Industries' and can only be copied or reproduced with their permission.
- Further information can be obtained from the NZ Metal Roof & Wall Cladding Code of Practice www.metlroofer.org.nz & www.roof.co.nz
- Where necessary adjust drawings for purlin battens or cavity battens.
- Details are for steel based materials, other substrate may require some changes.



TILT PANEL HORIZONTAL CLADDING JUNCTION
1:5

©COPYRIGHT DETAIL 2012

