

# COMMERCIAL TRIMRIB ROOFING

## I 25 BOX GUTTER DETAIL - External Bracket (Pan Fixed)

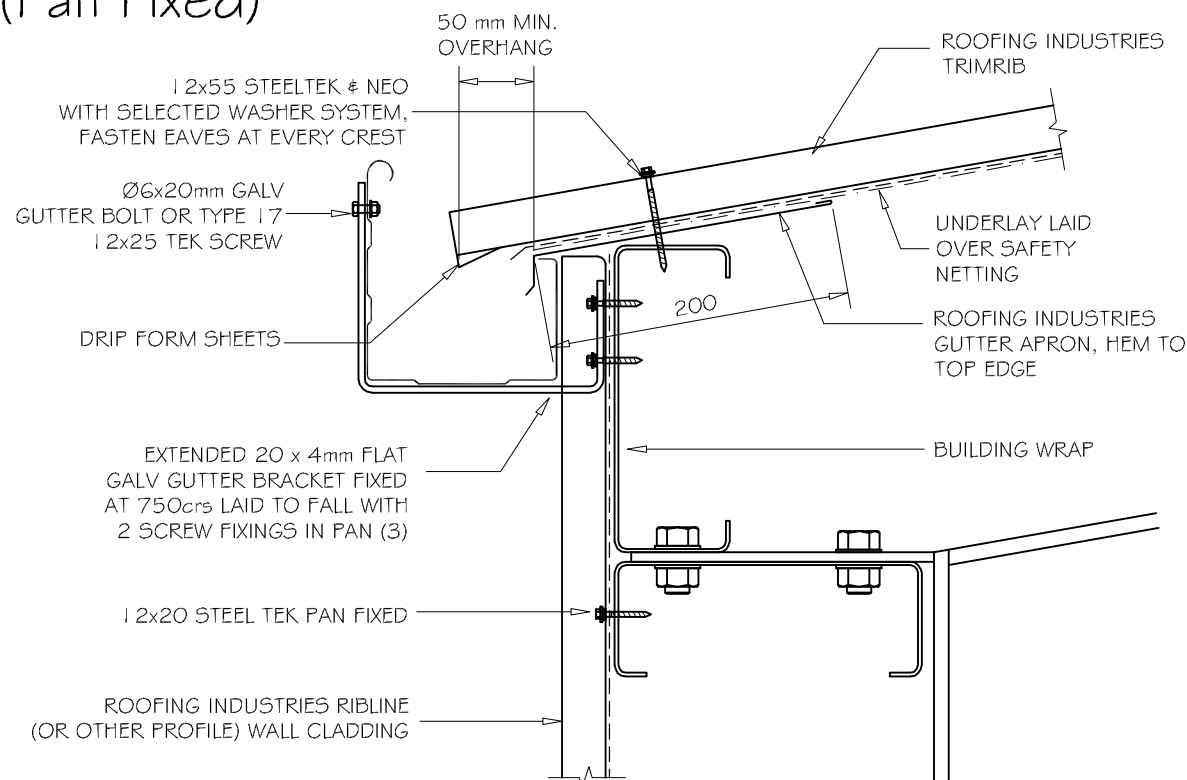
DETAIL NO. CTRO30C

DATE DRAWN 28/03/12

FILE REFERENCE RI-CTRO30C.DWG

### NOTES:

- (1) MINIMUM PITCH 3°
- (2) FOR CAPACITY CALCULATION REFER TO NZMRM CODE OF PRACTICE.
- (3) SNOW STRAPS & BRACKETS TO BE FITTED AT 600crs TO ALL GUTTERS IN AREAS SUBJECT TO SNOW.



### NOTES:

- These details are generally in compliance with the NZ Metal Roof & Wall Cladding Code of Practice and in some cases specific details by 'Roofing Industries'.
- The building designer is ultimately responsible to ensure that details used meet the requirements of the NZ Building Code for the specific project.
- Details of the supporting structure are indicative only and are the responsibility of the building designer.
- Thermal break or cavity battens may be required in some circumstances.
- Underlay selection and building wrap types are the responsibility of the designer. Alternative support to galvanised netting should be used in severe coastal environments including when aluminium is used.
- These details are for Roofing Industries profile/s as nominated and may not be applicable to other profiles.
- This drawing is the copyright of 'Roofing Industries' and can only be copied or reproduced with their permission.
- Further information can be obtained from the NZ Metal Roof & Wall Cladding Code of Practice [www.metalroofer.org.nz](http://www.metalroofer.org.nz) & [www.roof.co.nz](http://www.roof.co.nz)
- Where necessary adjust drawings for purlin battens or cavity battens.
- Details are for steel based materials, other substrate may require some changes.



I 25 BOX GUTTER TRIMRIB PROFILE

1:5

©COPYRIGHT DETAIL 2012

