

Ultra Batten Ranges

Outer battens are also available in 50mm, 150mm, and 200mm sizes.

Reference Limitation

This detail is an example of using UA10596 and UA10598 batten system demonstrating direct fix on concrete wall surface. For any other Ultra Batten profile fixing on concrete may be referred to this detail applying same method of installation of building elements such as damp proof course, underlays, membrane sheets etc.

Compliance Note

Although the details are generally in accordance with NZBC E2/AS1, the building Architect / Designer is ultimately responsible for details to meet the NZBC E2/AS1 and NASH Standard Part Two: May 2019

ULTRACLAD

Ultra-high performance cladding systems

PO Box 58009
Botany
Auckland 2163

Tel: 0800 500 338
Email: buildingsystems@vulcan.co
Web: buildingsystems.vulcan.co

VULCAN.
© 2023 Vulcan. All rights reserved.

Ultra Batten Direct Fix to Concrete Detail

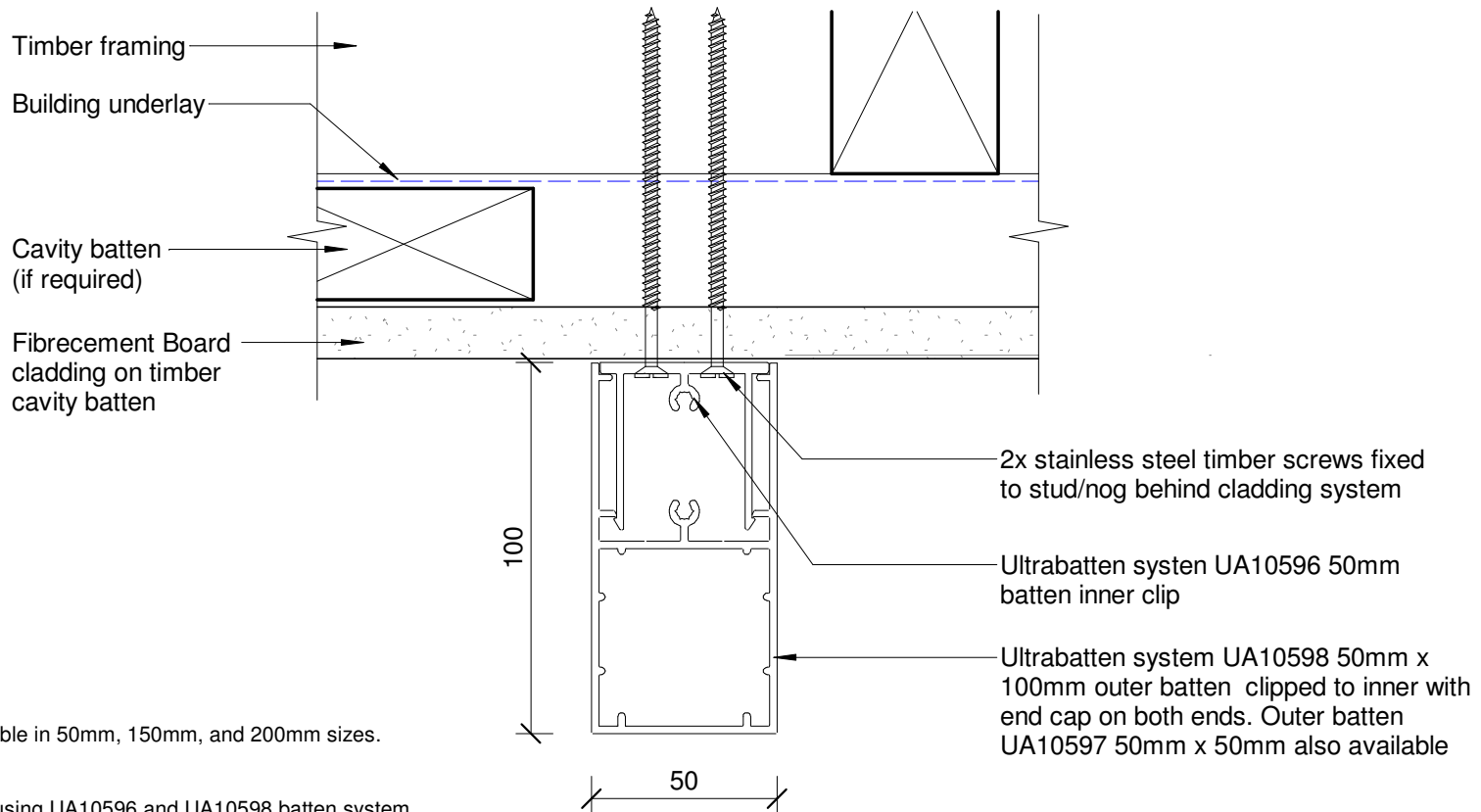
Ultra Batten Cladding System

UB01

REVISION: 01

SCALE: 1 : 2

DATE: March 2024



Ultra Batten Ranges

Outer battens are also available in 50mm, 150mm, and 200mm sizes.

Reference Limitation

This detail is an example of using UA10596 and UA10598 batten system demonstrating direct fix on fibrecement wall cladding. For any other Ultra Batten profile fixing on fibrecement wall cladding may be referred to this detail applying same method of installation of building elements such as damp proof course, underlays, membrane sheets and cavity system etc.

Compliance Note

Although the details are generally in accordance with NZBC E2/AS1, the building Architect / Designer is ultimately responsible for details to meet the NZBC E2/AS1 and NASH Standard Part Two: May 2019

ULTRACLAD

Ultra-high performance cladding systems

PO Box 58009
Botany
Auckland 2163
Tel: 0800 500 338
Email: buildingsystems@vulcan.co
Web: buildingsystems.vulcan.co

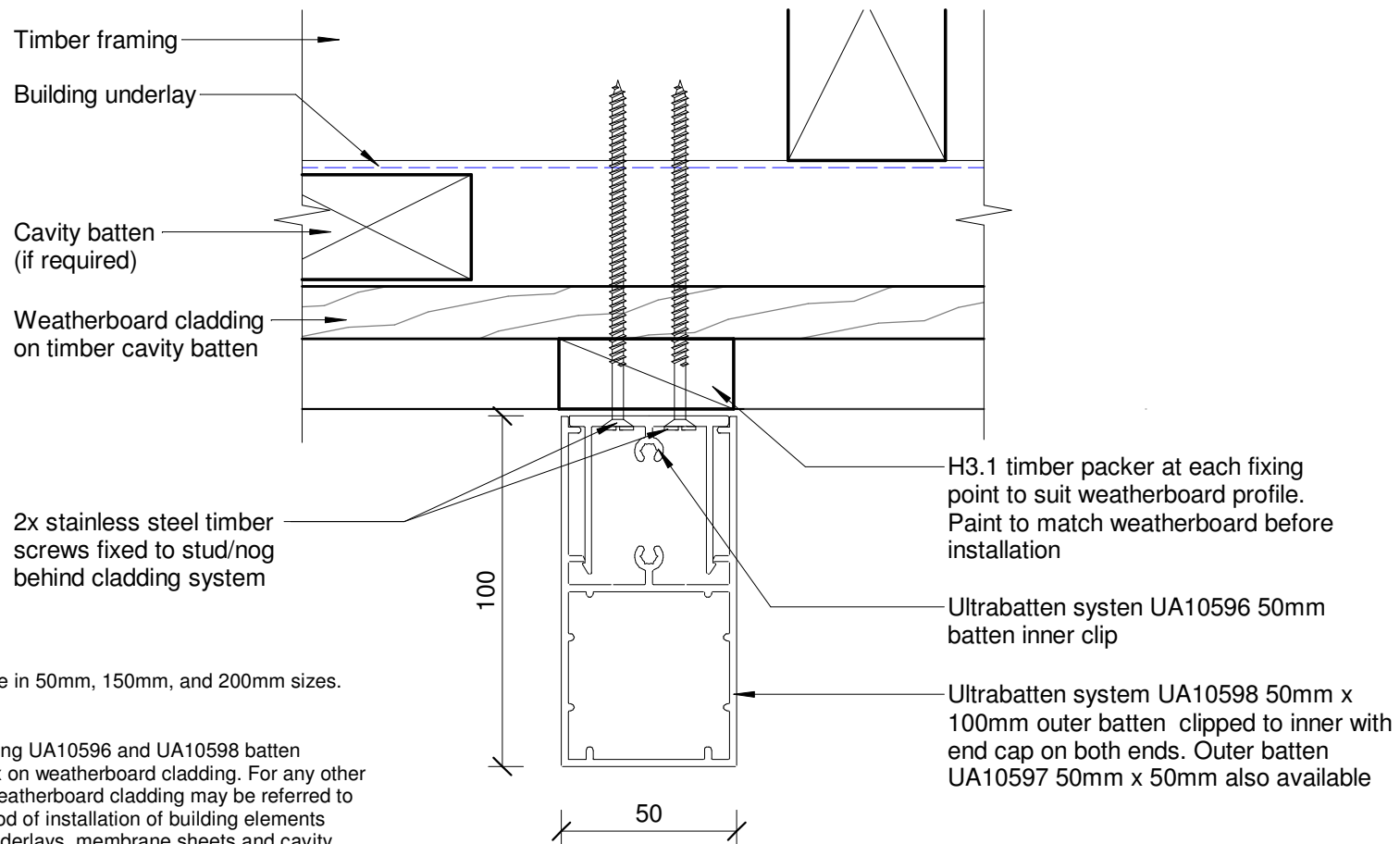
VULCAN.
© 2023 Vulcan. All rights reserved.

Ultra Batten Direct Fix to Fibrecement Board Detail

Ultra Batten Cladding System

REVISION: 01	
SCALE: 1 : 2	
DATE: March 2024	

UB02



Ultra Batten Ranges

Outer battens are also available in 50mm, 150mm, and 200mm sizes.

Reference Limitation

This detail is an example of using UA10596 and UA10598 batten system demonstrating direct fix on weatherboard cladding. For any other Ultra Batten profile fixing on weatherboard cladding may be referred to this detail applying same method of installation of building elements such as damp proof course, underlays, membrane sheets and cavity system etc.

Compliance Note

Although the details are generally in accordance with NZBC E2/AS1, the building Architect / Designer is ultimately responsible for details to meet the NZBC E2/AS1 and NASH Standard Part Two: May 2019

ULTRACLAD

Ultra-high performance cladding systems

PO Box 58009
Botany
Auckland 2163
Tel: 0800 500 338
Email: buildingsystems@vulcan.co
Web: buildingsystems.vulcan.co

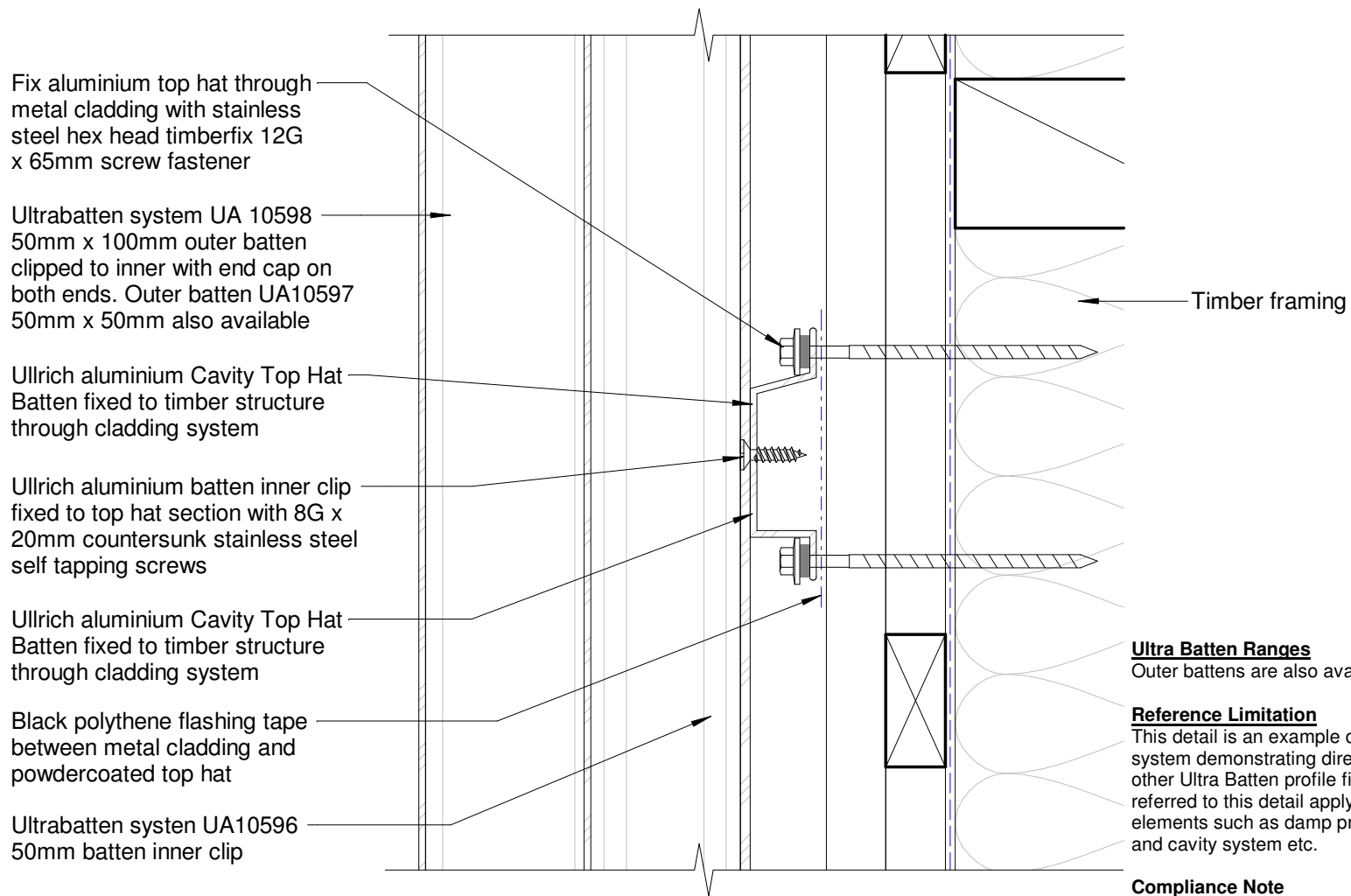
VULCAN.
© 2023 Vulcan. All rights reserved.

Ultra Batten Direct Fix to Weatherboard Detail

Ultra Batten Cladding System

REVISION: 01	
SCALE: 1 : 2	
DATE: March 2024	

UB03



Ultra Batten Ranges
Outer battens are also available in 50mm, 150mm, and 200mm sizes.

Reference Limitation
This detail is an example of using UA10596 and UA10598 batten system demonstrating direct fix on metal sheet wall cladding. For any other Ultra Batten profile fixing on metal sheet wall cladding may be referred to this detail applying same method of installation of building elements such as damp proof course, underlays, membrane sheets and cavity system etc.

Compliance Note
Although the details are generally in accordance with NZBC E2/AS1, the building Architect / Designer is ultimately responsible for details to meet the NZBC E2/AS1 and NASH Standard Part Two: May 2019

REVISION:	01	
SCALE:	1 : 2	
DATE:	March 2024	

Ultra Batten Ranges

Outer battens are also available in 50mm, 150mm, and 200mm sizes.

Installation Note for Treated Timber Substrate (Handrail/Balustrades)

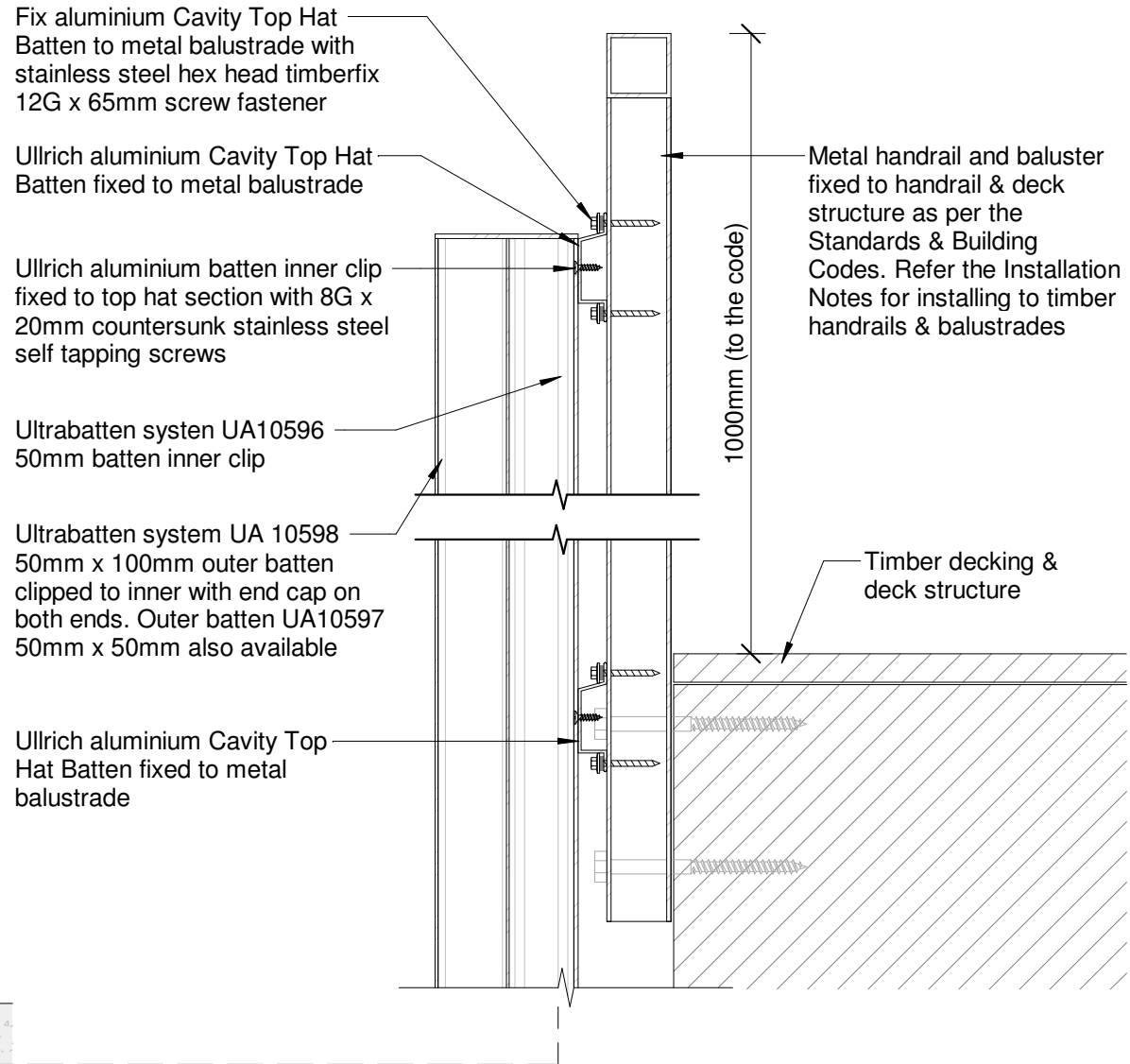
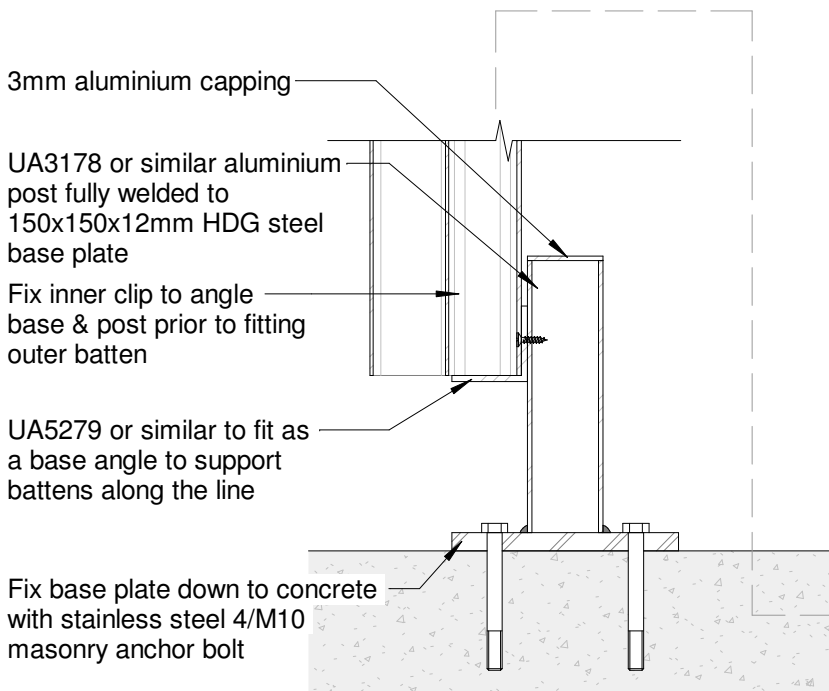
Underlay strips to isolate aluminium from treated timber components. These strips are 50 mm wide medium-density polyethylene (MDPE) - to comply with NZBC E2/AS1 - Table 23. Properties of roofing underlays and wall underlays. This separates aluminium components and accessories from timber components treated with copper-based treatments.

Reference Limitation

This detail is an example of using UA10596 and UA10598 batten system demonstrating direct fix on structural elements. For any other Ultra Batten profile fixing on structural elements may be referred to this detail applying same method of installation using appropriate fixing screws.

Compliance Note

Although the details are generally in accordance with NZBC E2/AS1, the building Architect / Designer is ultimately responsible for details to meet the NZBC E2/AS1 and NASH Standard Part Two: May 2019



ULTRA CLAD

Ultra-high performance cladding systems

PO Box 58009
Botany
Auckland 2163

Tel: 0800 500 338
Email: buildingsystems@vulcan.co
Web: buildingsystems.vulcan.co

VULCAN.
© 2023 Vulcan. All rights reserved.

Ultra Batten Rainscreen Side Fixing Detail

Ultra Batten Cladding System

REVISION: 01

SCALE: 1 : 5

DATE: March 2024

UB05

Fix aluminium Cavity Top Hat Batten through plywood cladding with stainless steel hex head timberfix 12G x 65mm screw fastener

Ullrich aluminium Cavity Top Hat Batten fixed to timber structure through cladding system

Ullrich aluminium batten inner clip fixed to top hat section with 8G x 20mm countersunk stainless steel self tapping screws

Ultrabatten system UA10596 50mm batten inner clip

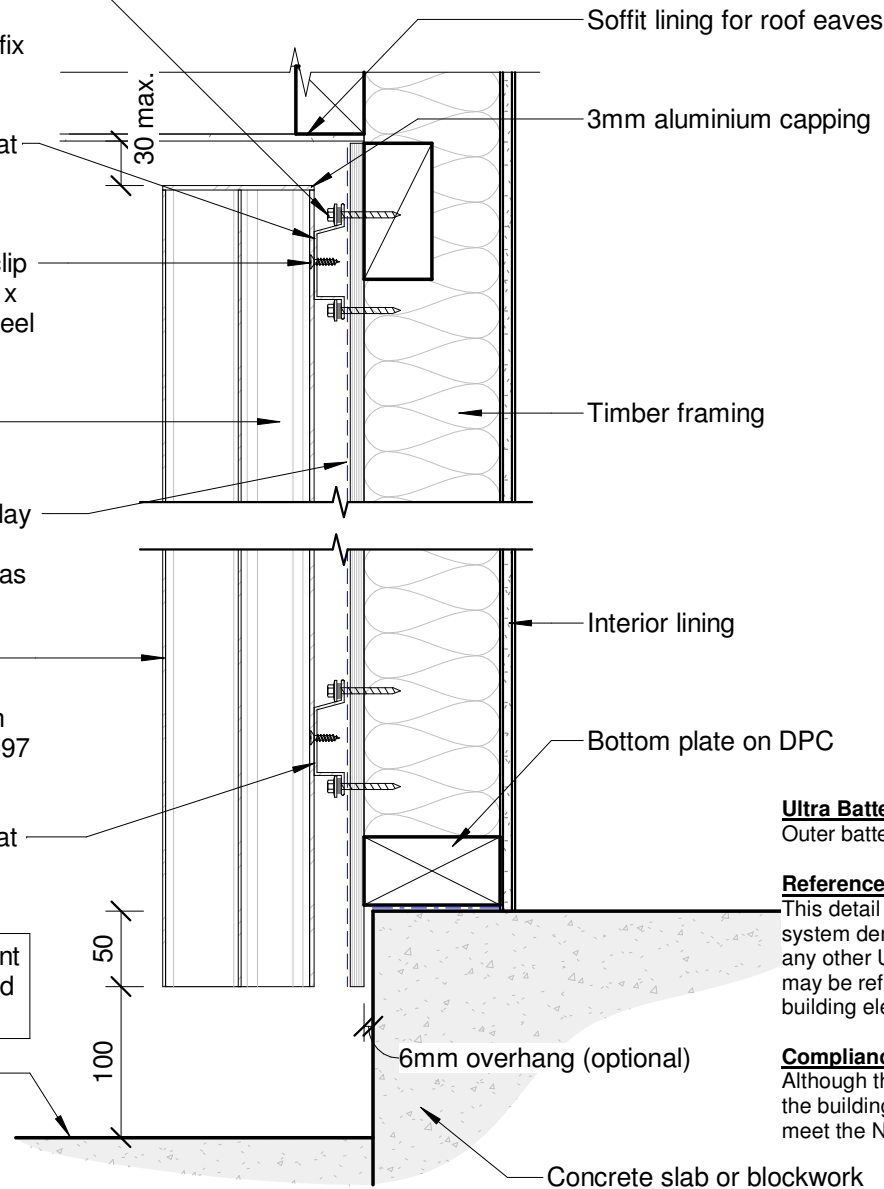
Wraptite UV-SA Building underlay continuous over H3.1 LOSP treated plywood cladding used as a rigid wall underlay

Ultrabatten system UA 10598 50mm x 100mm outer batten clipped to inner with end cap on both ends. Outer batten UA10597 50mm x 50mm also available

Ullrich aluminium Cavity Top Hat Batten fixed to timber structure through cladding system

Note: 100 mm minimum to permanent paving or 175 mm to unpaved ground to clause 9.1.3 of E2/AS1

Finished ground level



Soffit lining for roof eaves

3mm aluminium capping

Timber framing

Interior lining

Bottom plate on DPC

6mm overhang (optional)

Concrete slab or blockwork

Ultra Batten Ranges

Outer battens are also available in 50mm, 150mm, and 200mm sizes.

Reference Limitation

This detail is an example of using UA10596 and UA10598 batten system demonstrating direct fix on rigid air barrier wall surface. For any other Ultra Batten profile fixing on rigid air barrier wall surface may be referred to this detail applying same method of installation of building elements such as underlays, membrane sheets etc.

Compliance Note

Although the details are generally in accordance with NZBC E2/AS1, the building Architect / Designer is ultimately responsible for details to meet the NZBC E2/AS1 and NASH Standard Part Two: May 2019

ULTRACLAD

Ultra-high performance cladding systems

PO Box 58009
Botany
Auckland 2163

Tel: 0800 500 338
Email: buildingsystems@vulcan.co
Web: buildingsystems.vulcan.co

VULCAN.
© 2023 Vulcan. All rights reserved.

**Ultra Open Joint Cladding on Membrane
side Fixing Detail**

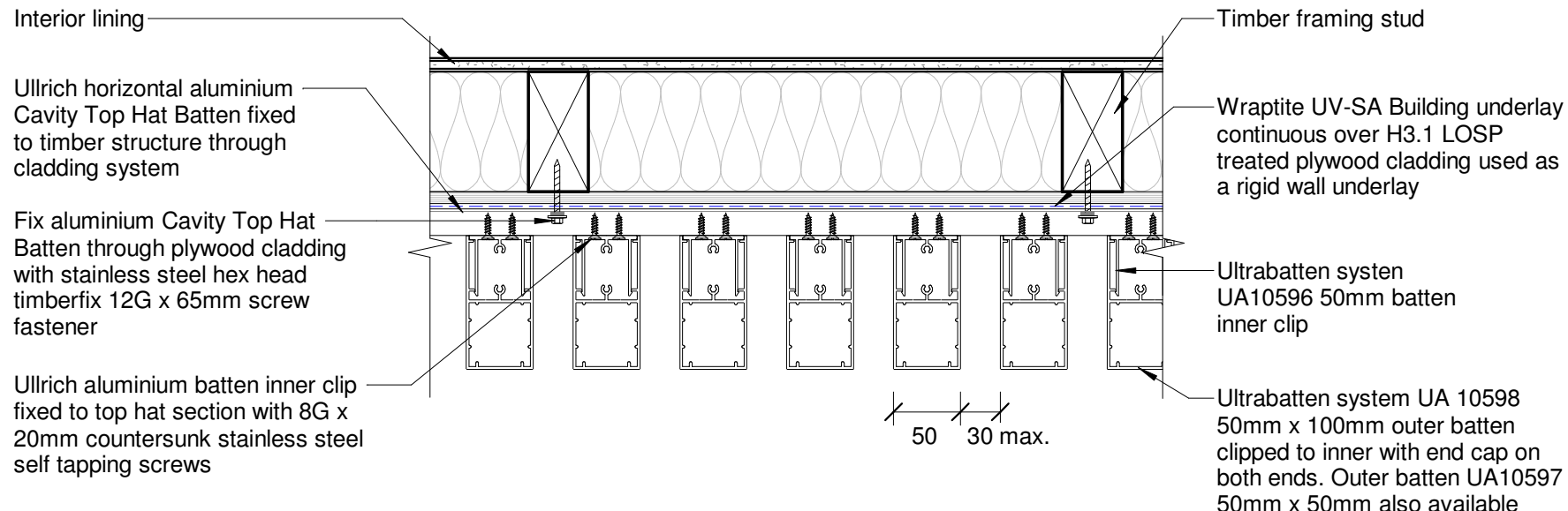
Ultra Batten Cladding System

REVISION: 01

SCALE: 1 : 5

DATE: March 2024

UB06



Ultra Batten Ranges

Outer battens are also available in 50mm, 150mm, and 200mm sizes.

Reference Limitation

This detail is an example of using UA10596 and UA10598 batten system demonstrating direct fix on rigid air barrier wall surface. For any other Ultra Batten profile fixing on rigid air barrier wall surface may be referred to this detail applying same method of installation of building elements such as underlays, membrane sheets etc.

Compliance Note

Although the details are generally in accordance with NZBC E2/AS1, the building Architect / Designer is ultimately responsible for details to meet the NZBC E2/AS1 and NASH Standard Part Two: May 2019

ULTRACLAD

Ultra-high performance cladding systems

PO Box 58009 Botany Auckland 2163
 Tel: 0800 500 338
 Email: buildingsystems@vulcan.co
 Web: buildingsystems.vulcan.co

VULCAN.
 © 2023 Vulcan. All rights reserved.

**Ultra Open Joint Cladding on Membrane
 Plan View Fixing Detail**

Ultra Batten Cladding System

REVISION:	01
SCALE:	1 : 5
DATE:	March 2024

UB07