

R e G e n™ by NEUFLO

Carpet Tile

Respecting the Environment | Meeting your Budget

AERIAL VIEW COLLECTION

Artwork by nature, weaving a myriad of patterns, shapes and colours from earth's element.



Architectural
Surfaces BY TILE
WAREHOUSE

Ex-Stock NZ

Architectural Surfaces BY TILE WAREHOUSE

At Architectural Surfaces by Tile Warehouse, we continue to deliver sophistication. We pride ourselves on delivering unwavering confidence in product quality, competitive pricing, exceptional service, extensive technical expertise, and readily available stock. Drawing on the rich legacy of Tile Warehouse which spans over 35 years and with a steadfast commitment to excellence, we will ensure that your projects are executed seamlessly, providing you with the assurance you need for successful outcomes.

Introducing the ultimate in sustainability, RE-GEN, Stocked in New Zealand.

Contact Us Today for Product information and Samples;

www.tilewarehouse.co.nz

286 Church St
Penrose
Auckland 1062

PH | 0800 289 845

Let's do our part to **remove plastic** waste from
the ocean and landfills by R e G e n™ erating
them into low carbon footprint carpet tiles !



R e G e n™
by NEUFLO



Recycled into nylon polymer chips



Nylon polymer chips

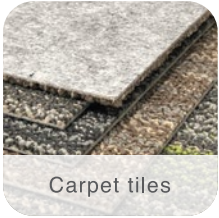
Extruded into R e G e n™ nylon



R e G e n™ nylon



Discarded carpet to be recycled into post-industrial waste nylon



Carpet tiles

R e G e n™ nylon carpet tile offers **100% post-industrial recycled nylon** content that **reduces carbon footprint** by **40%** versus traditional carpet tiles.



Crafted into carpet



ECOTEC® CARPET TILE BACKING

- Eco friendly - PVC Free, bitumen free
- Enhances walking comfort and reduces leg fatigue
- Superior sound absorbency results in quieter environment
- Cushioning effect absorbs foot impact and enhances carpet durability



Multi layer bonded into felt backing



Regenerated into PET fiber



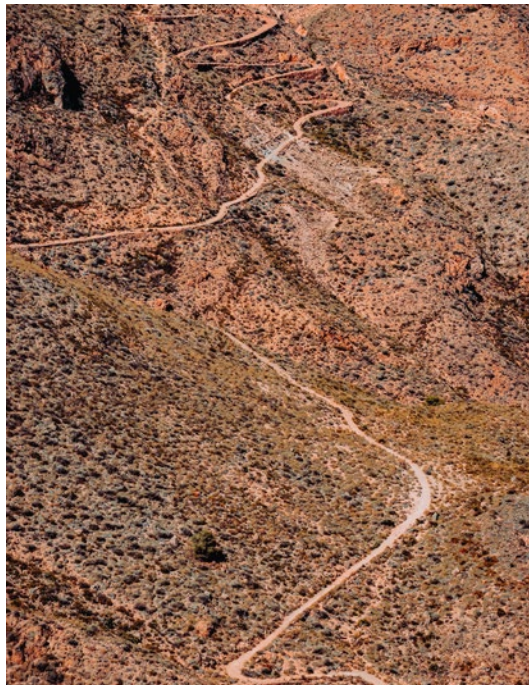
Recycled into PET chips



PET beverage bottles



DESERT



600901



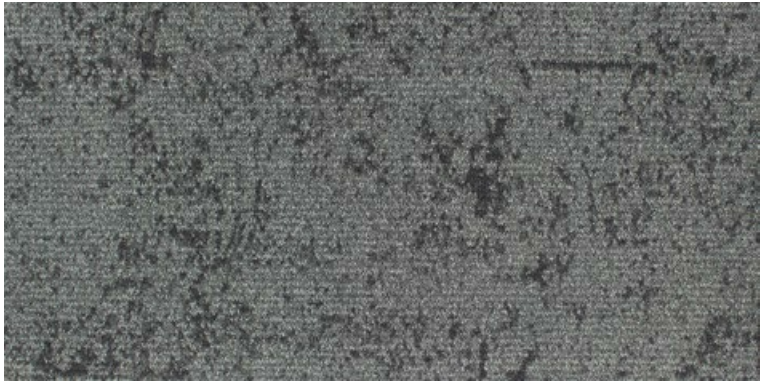
600901



600901



600901



600902



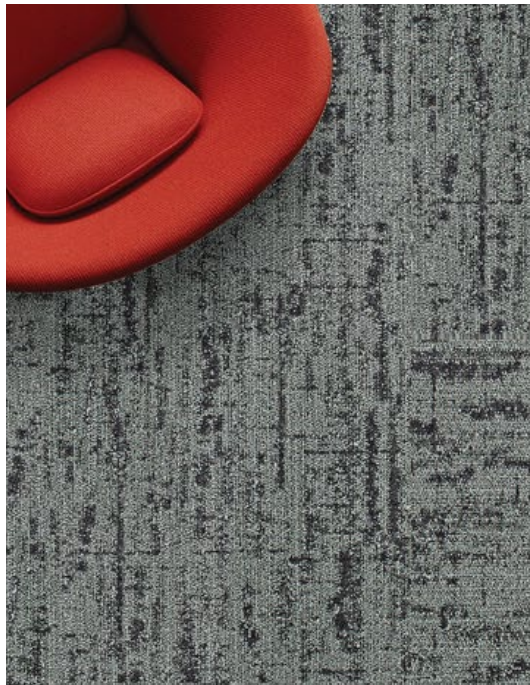
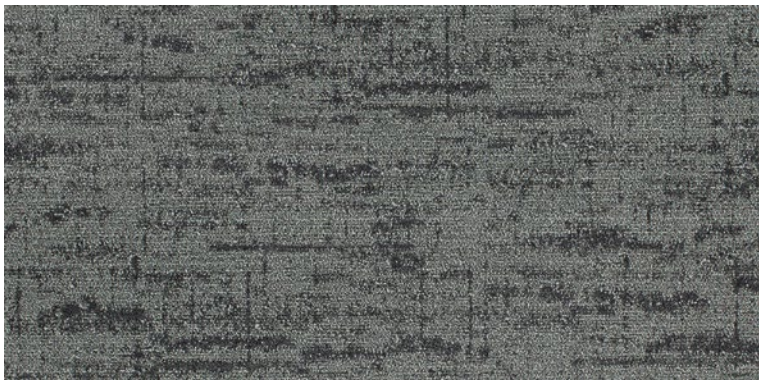
600904

DESERT

Tile size : 50cm x 100cm

AUTUMN WOODS

601002

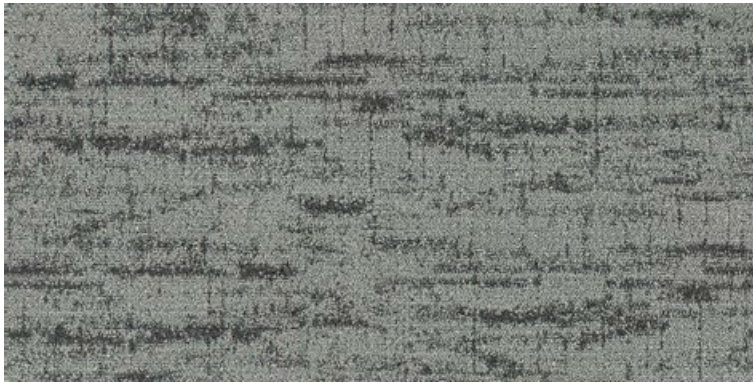


601002

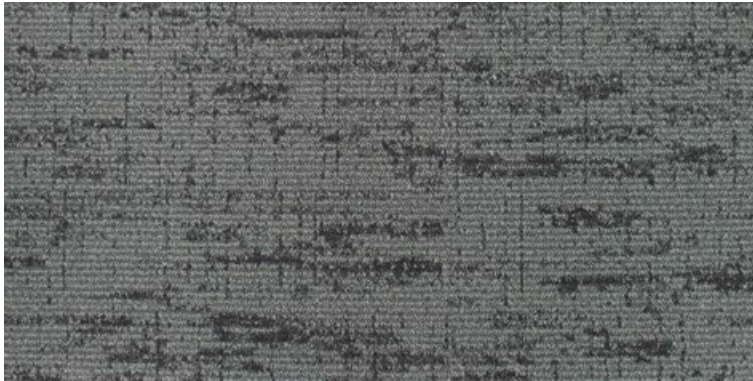




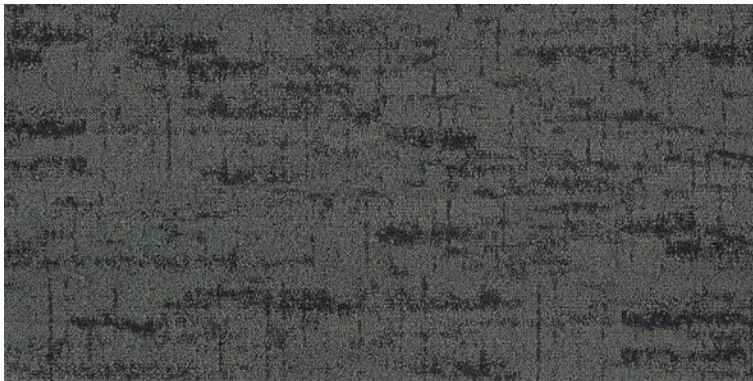
601002



601001



601002



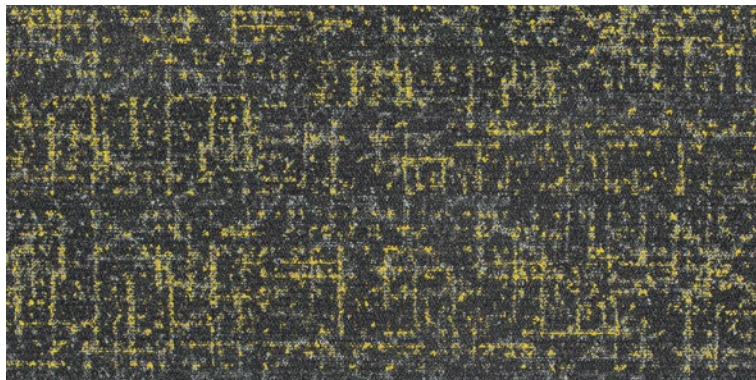
601004

AUTUMN WOODS

Tile size : 50cm x 100cm

FARM LAND

601202+Gold

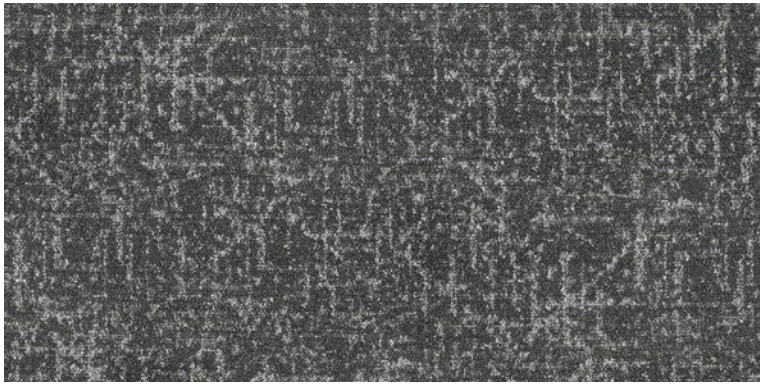


601202+Gold, 601204





601202+Gold, 601204



601201



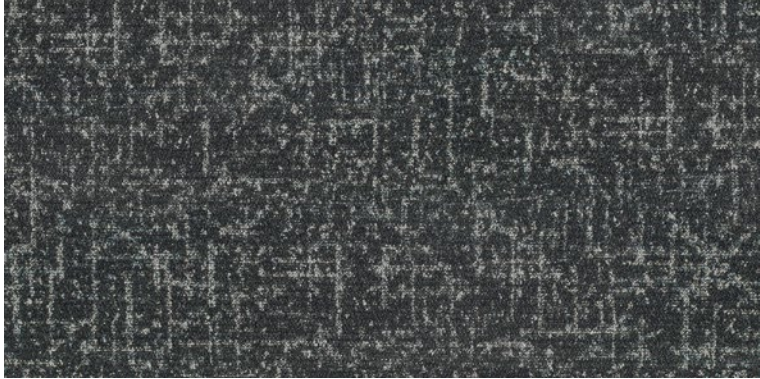
601203



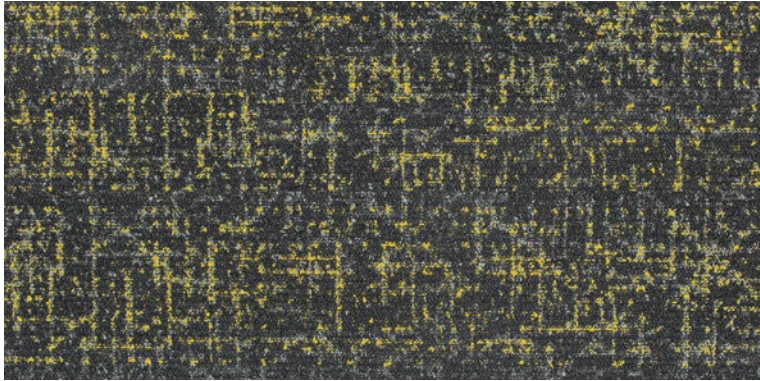
601204

FARM LAND

Tile size : 50cm x 100cm



601202



601202+Gold

FARM LAND

Tile size : 50cm x 100cm

R e G e n™
by NEUFLORE

Architectural
Surfaces BY TILE
WAREHOUSE

At Architectural Surfaces, we bring you a collection of premium surface materials that redefine luxury and elegance. Sourced from exclusive suppliers around the globe, our selection represents the pinnacle of quality and craftsmanship.

www.tilewarehouse.co.nz

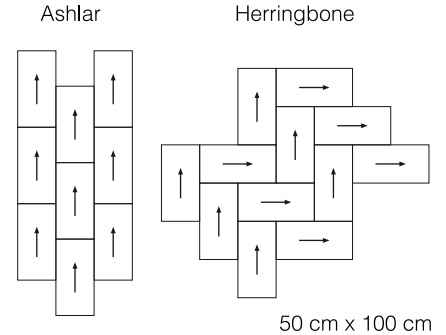
*286 Church St
Penrose
Auckland 1062*

PH | 0800 289 845

Product Specifications :

Construction	High density Wovenloop
Face Fiber	100% R e G e n™ (recycled nylon)
Dyed Method	Solution dyed
Gauge	1/11 inch
Stitches	47/10 cm
Total Thickness	8.5 mm (Ecotec felt backing 450gm)
Backing	ECOTEC® (80% post-consumer PET bottles)
Tile Size	50 cm x 100 cm
Wear Classification	Heavy
Flammability	≥ 0.45 (Class I)
Electrostatic Propensity	(AATCC 134) less than 3kv
Colorfastness To Light	AATCC 16E 4
Sound Absorption	ASTM C423 NRC 0.25 or higher
Indoor Air Quality	Singapore Green Building Council

Installation Methods :



Specifications are based on average normal manufacturing tolerances, variations do not affect product performance. As with all quality carpets , slight variations in color may occur from dye lot to dye lot.

Protective chair pads are recommended under office chairs with roller castors to preserve appearance retention and to avoid excessive wear.

For end of life disposal, please refer to your country's disposal regulation.

