

The advantages of the Breeze®

→ Economical:

Thanks to its small format, its light weight per m², its quick installation and maintenance-free.

→ Water and wind-resistant:

The overlapping section of the Breeze® and its closed vertical joints prevent the ingress of water and the fixing system combined with the solidity of the tile ensures a very good wind load resistance.

→ 100% natural, recyclable and eco-friendly:

Breeze® is made of natural terracotta, a building material that combines thermal inertia and durability.

→ Thermal efficient:

Combined with TERREAL CoolMax™ reflective insulation, Breeze® provides the building with high energy-performance envelop.



Breeze® system installed with Terreal CoolMax™ thermal reflective insulation

The properties of the Breeze® fixing system

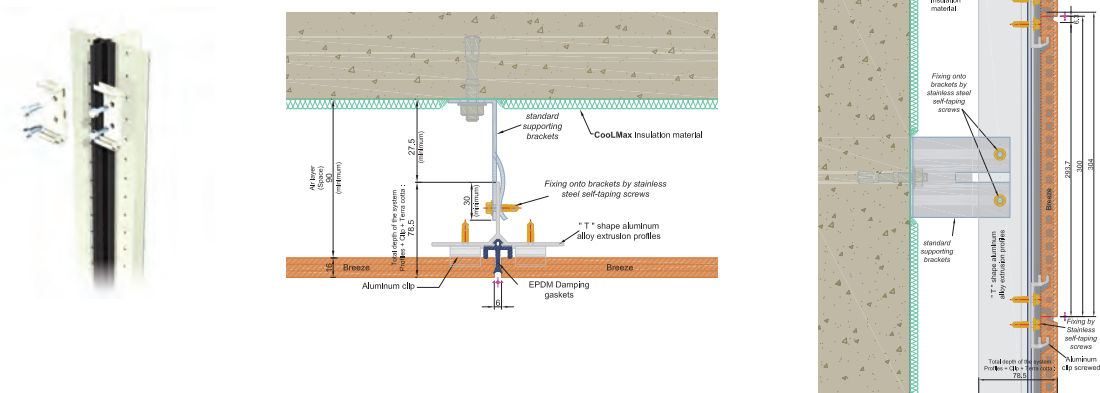
Breeze® terracotta panels are secured to the vertical T-shaped aluminium profile using the fixing clips fastened with 2 self tapping stainless steel screws. Vertical aluminium T-shaped profiles are pre-punched hole with vertical spacing of 25mm. The terracotta tile is well-supported on four points by the clips and on its two smaller sides by the rubber gasket. It can reach a very good wind load resistance of 2380 Pa and flexural strength of 150 daN.

Dimensions (mm) H x L x th	Module (mm)	Quantity of products per sqm	U. weight (kg)	Weight per sqm (kg)	Quantity of profiles per main course sqm	Quantity of clips per main course sqm
304 x 594 x 16	300 x 600	5.56/m ²	4.88	27.13	1,67 lm/m ²	11,11/m ²

H = Height, L = Length, th = thickness



Quick implementation:
Total thickness of the Breeze® cladding system = 106 mm.



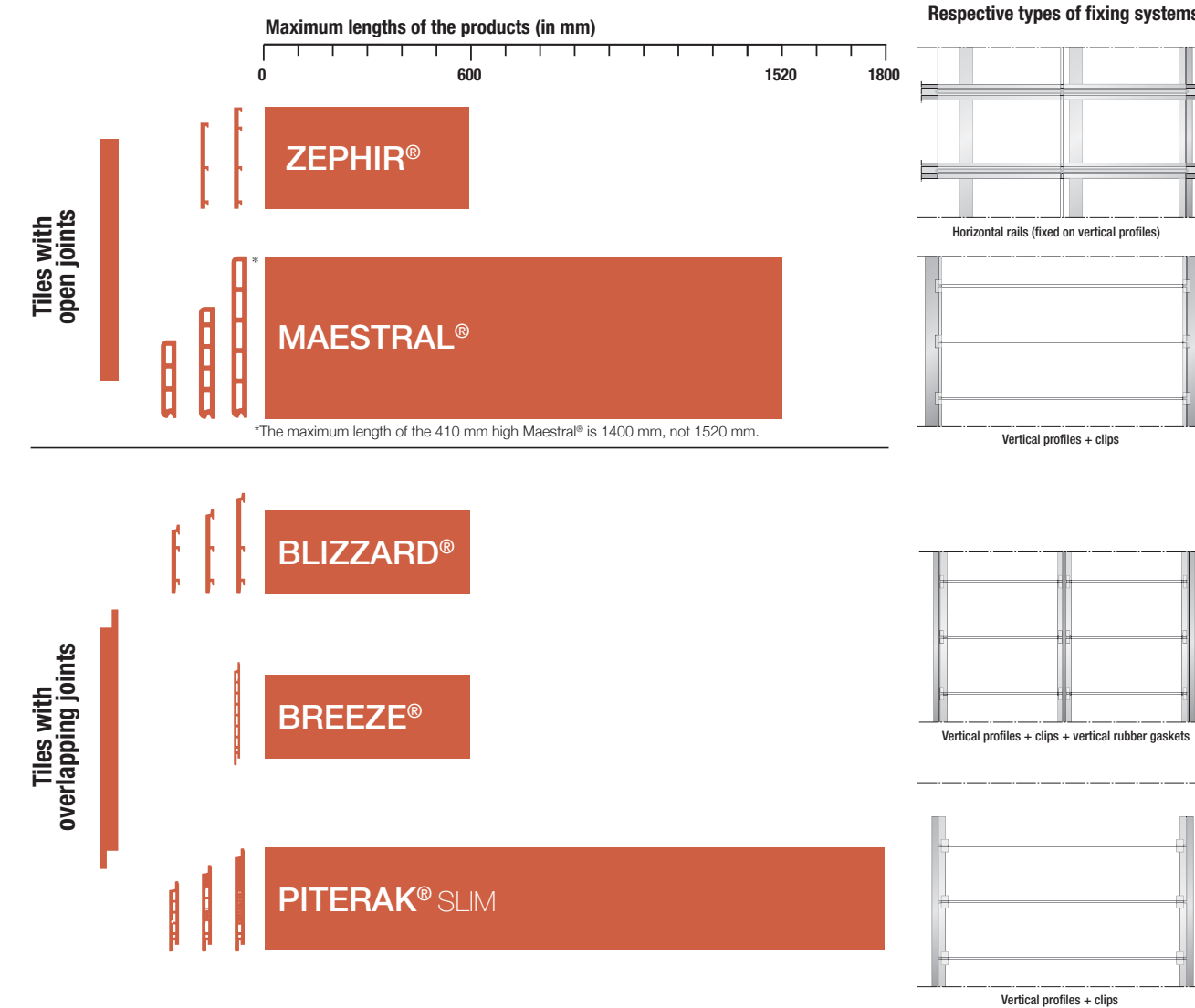
Warning: the fixing elements mentioned in italic above on the drawing are not supplied by TERREAL.



Al Rawdah, Jeddah, Arabie Saoudite
Product: Zéphir® Red Orange - Smooth

Joy City, Beijing, China –
Product: Piterak Slim®, red, length up to 1.5 meter

TERREAL Cladding Products



TERREAL SAS Capital stock of 87 176 520 • Head Office: 15 rue Pages - 92 158 Suresnes cedex • SIREN 562 110 348 RCS Nanterre • 08/11

Breeze®

Extra slim and economic rainscreen cladding system
for a reinforced protection



www.terreal.com.my

www.terreal.com.sg

Discover the entire range of Terreal Cladding products (Rainscreen claddings, Sunscreens, Acoustic Claddings, Facing Bricks) and all our customized services through our website www.terreal.com



TERREAL Singapore Pte Ltd
No 5 Gul Crescent - Singapore 629 521
Tel: +65 68 46 8444 – Fax: +65 68 46 0444
Email: sales@terreal.com.sg

TERREAL Malaysia Sdn Bhn
No 25, Jalan TPK 1/5, Taman Perindustrian Kinrara,
Seksyen 1, 47180 Puchong, Selangor Darul Ehsan
Tel: +60 380 75 4010 / 4020 / 4060 – Fax: +60 380 75 1090
Email: tbf_kl@tm.com.my

TERREAL Headquarters
15 rue Pages – 92 158 SURESNES Cedex France
Tel: +33 1 49 97 20 30 – Fax: +33 1 49 97 20 56

NEW

BREEZE® INSTALLATION GUIDE

COLOURS



3D image - Hulme Tower Manchester, UK

Breeze®



With TERREAL facade, now everyone can clad!

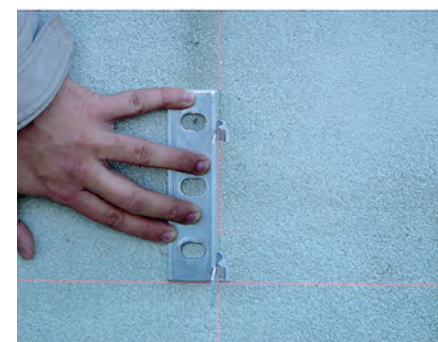
Pioneer in the art of building envelopes in terracotta for more than 20 years, TERREAL assures you architectural quality and technical performances of its ventilated facades and of its active participation in sustainable development.

TERREAL continues to develop and adapt its range to customer demand by launching a new low-cost system: Breeze®. Breeze® is an extra slim (16mm) double skin rainscreen cladding system of small dimension (30 x 60cm) with overlapping horizontal joints. It offers the advantage of the double skin thermal insulation and moisture protection of the building thanks to its complete closed-wall system and through ventilation. Its format makes it lighter and easier to install and also more cost-efficient than other large double skin products.

It can be used for new structures as well as for upgrading both on residential, commercial and industrial buildings.



INSTALLATION DETAILS: ON THE MAIN COURSE



Set the vertical spacings (60cm) required between vertical aluminium T-shape profiles, then draw horizontal and vertical lines as fixing references.



Set and fix supporting brackets in a staggered way along T-shape profiles' fixing line. Brackets' depth shall be adapted to Terreal CoolMax insulation thickness.



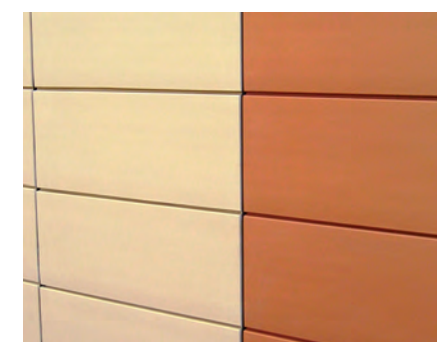
Fix the vertical T-shape profiles with their rubber gasket in the brackets and adjust the profiles' verticality so all profiles are on the same vertical plan.



Fix Terreal CoolMax™ insulation between the vertical T-shape profiles and the supporting wall structure, ensuring there is no bulging of the Terreal CoolMax™ insulation. Minimum air gap between back face of Breeze® terracotta panel and Terreal CoolMax™ insulation front face shall be 20mm.

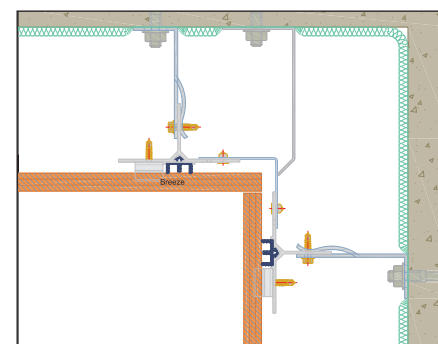


Screw the fixing clips on the T-shaped profiles. Position the Breeze terracotta panel between the rubber gaskets and insert the panel's back face grooves onto the clips. Panel installation shall be done from bottom to top.

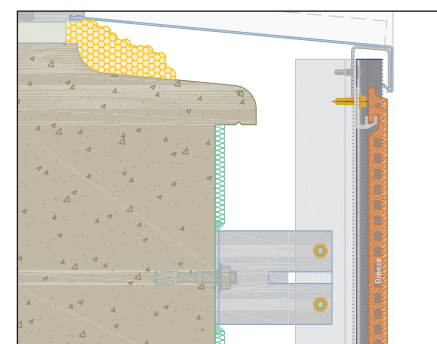


Breeze® Product installed.

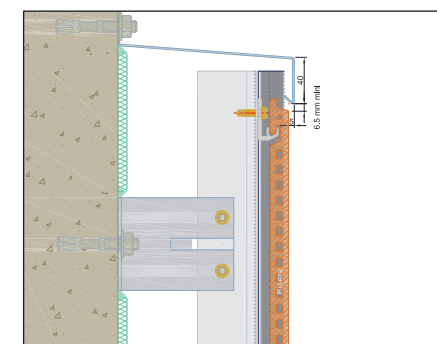
INSTALLATION DETAILS: DEALING WITH IRREGULAR POINTS



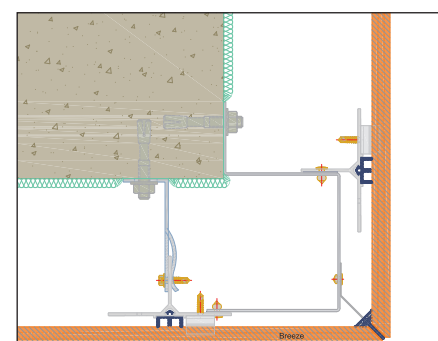
Internal angle



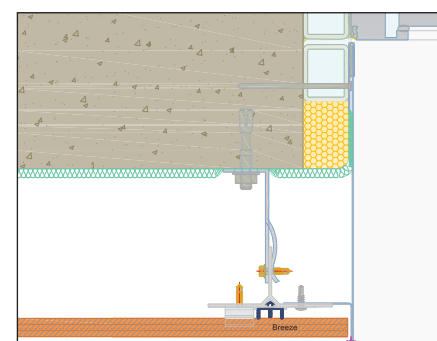
Window sill



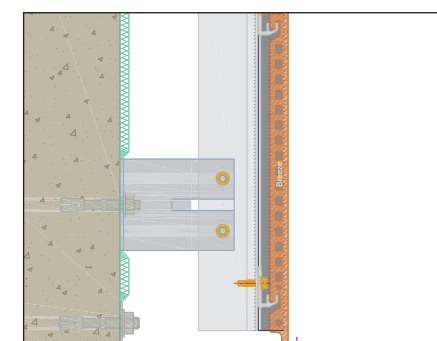
Details at top facade



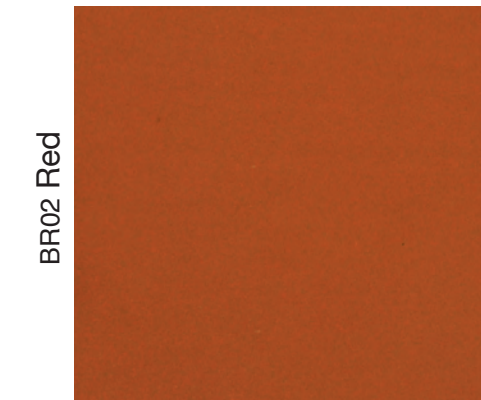
External angle



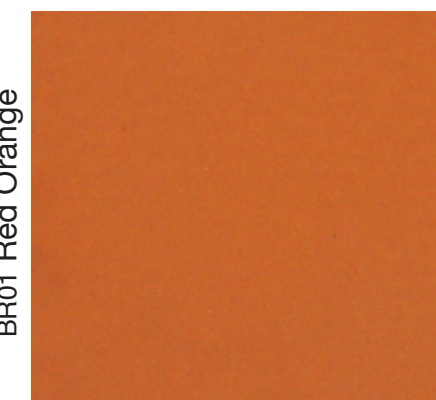
Opening details: jamb section



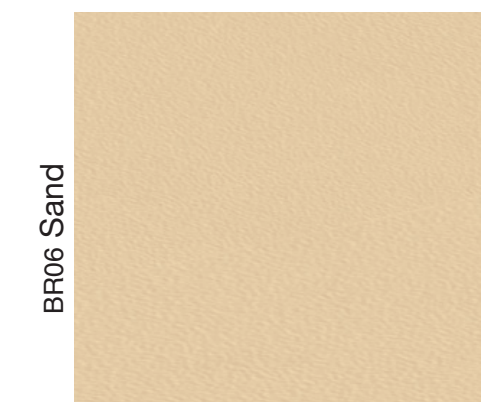
Details at bottom facade



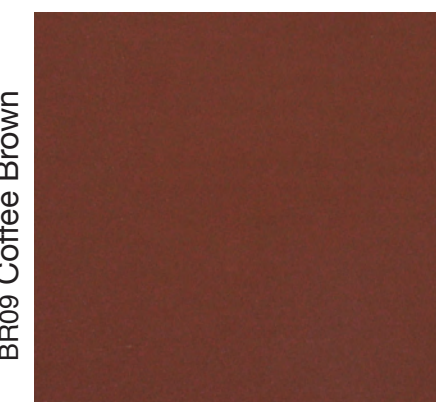
BR02 Red



BR01 Red Orange

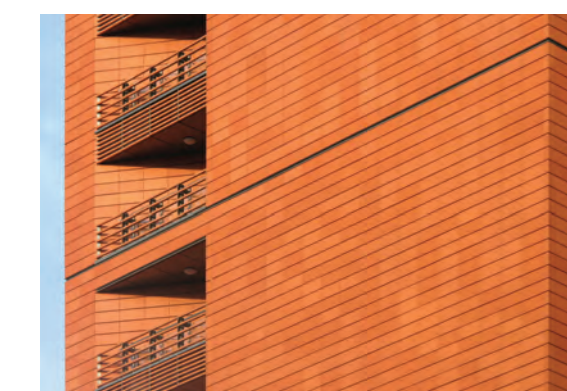
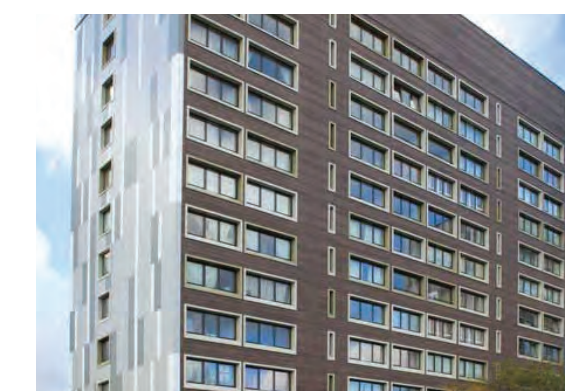
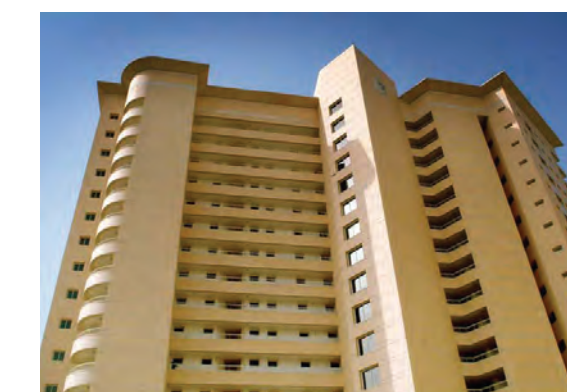


BR06 Sand



BR09 Coffee Brown

Colours shown on catalogue may vary from the actual product. Natural tones will weather naturally over time



TERREAL FACADE, BEAUTIFUL, VERSATILE, SUSTAINABLE.