

VERTICAL INSTALLATION

with V-Clip®
label façade



TERREAL Façade adds the V-Clip® system from the LABEL FAÇADE company to its extensive range of cladding solutions. Tested and approved by the CSTB, the V-Clip® fixing system is made of a high performance steel wire clip that locks on a horizontal rail. With V-Clip®, the products Piterak® Slim, Piterak® XS and Maestral® can be installed vertically on flat or curved surfaces. This system reduces the horizontal joint to 8mm. As a result the cladding looks more continuous, emphasizing the verticality of the façade.

Technical Assessment No.2/09-1362



ELLIPSE TOWER, APPART' CITY, AMIENS, FRANCE

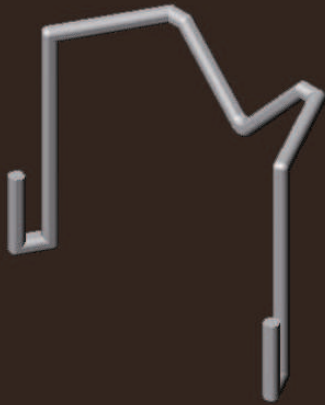
Architect : Scau Architecture

Owner : Vinci Immobilier

Installer : Mauger Père et Fils

Product : Maestral® mat glazed white, light grey and black

ADVANTAGES



- System technical assessment
- Fits with all configurations of walls
- Fast and easy installation
- System masked by the invisible terracotta alveoli
- Seismic Resistance
- Wind resistance

Available
FOR 3 PRODUCTS



Piterak® Slim

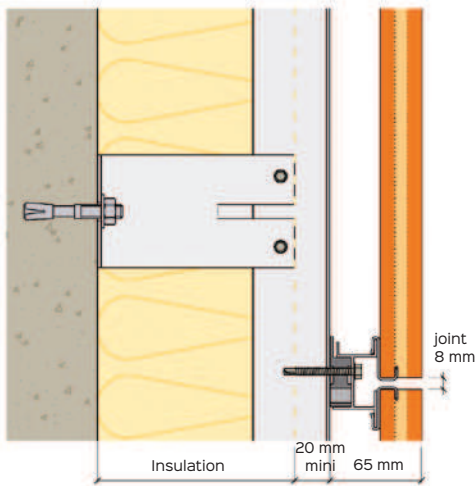


Piterak® XS

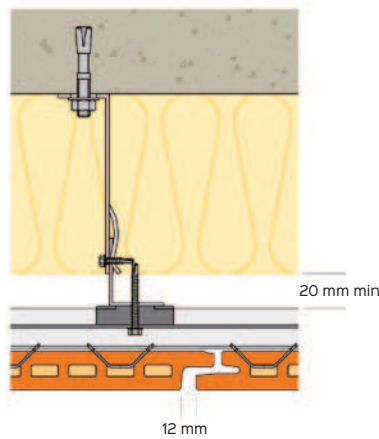


Maestral®

Standard installation
DETAILS



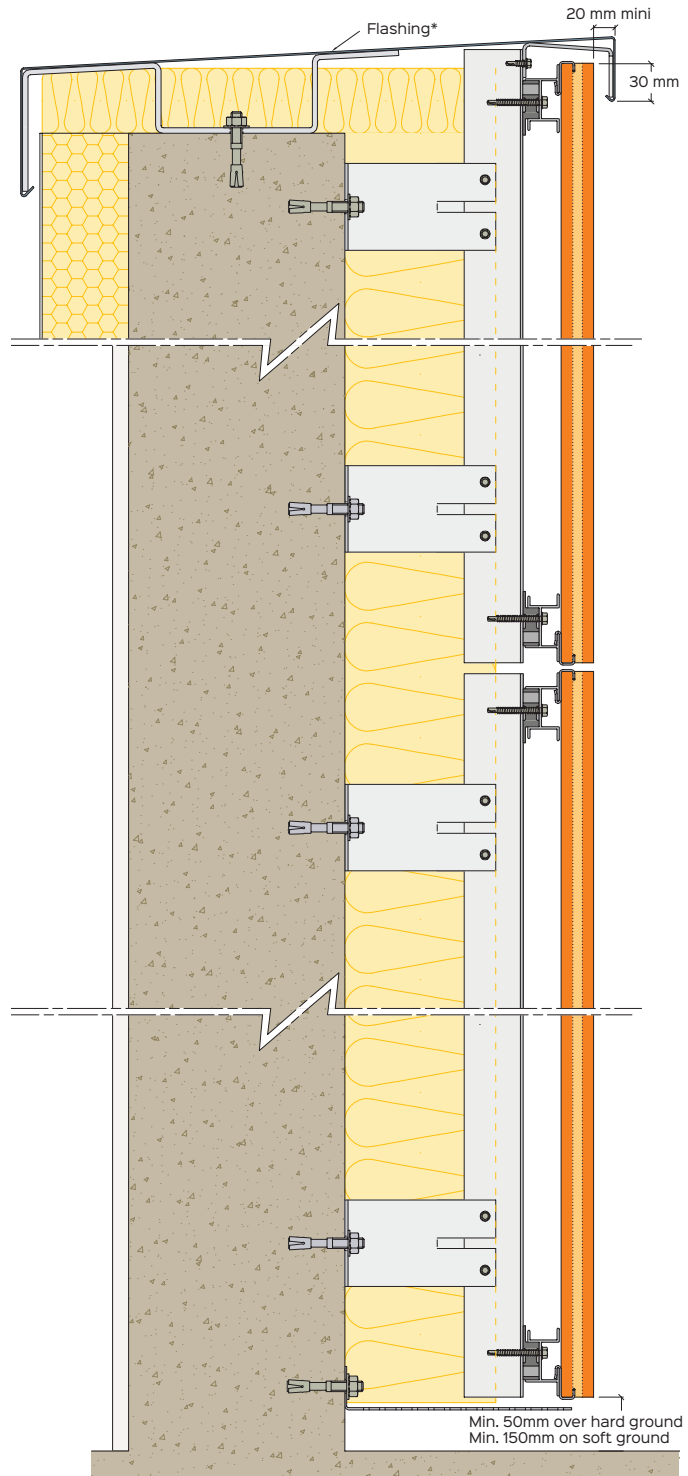
With Piterak® Slim or Piterak® XS



With Maestral®

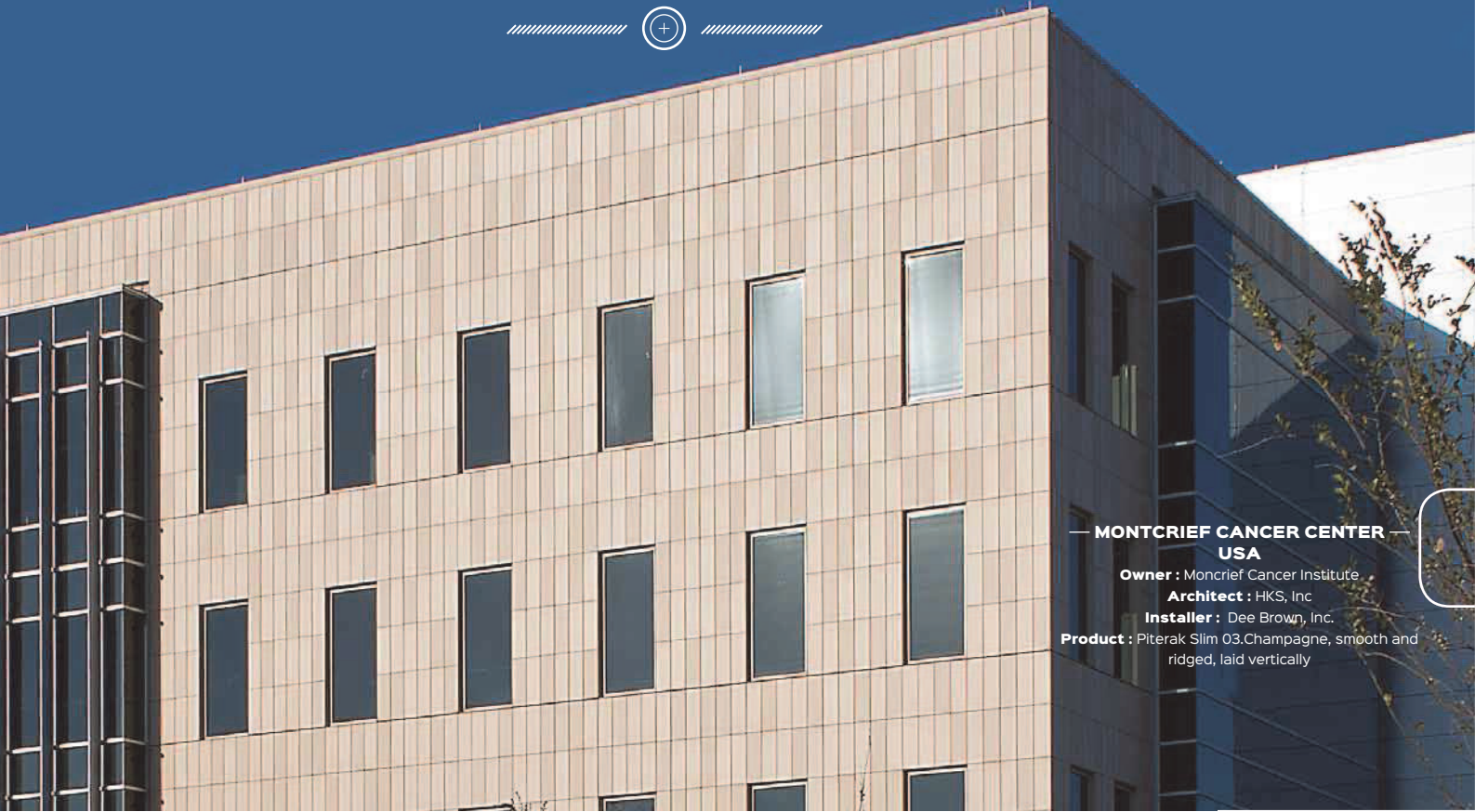


DETAIL :
WALL BASE AND PARAPET



* Not furnished by Terreal

DETAIL :
CORNERS



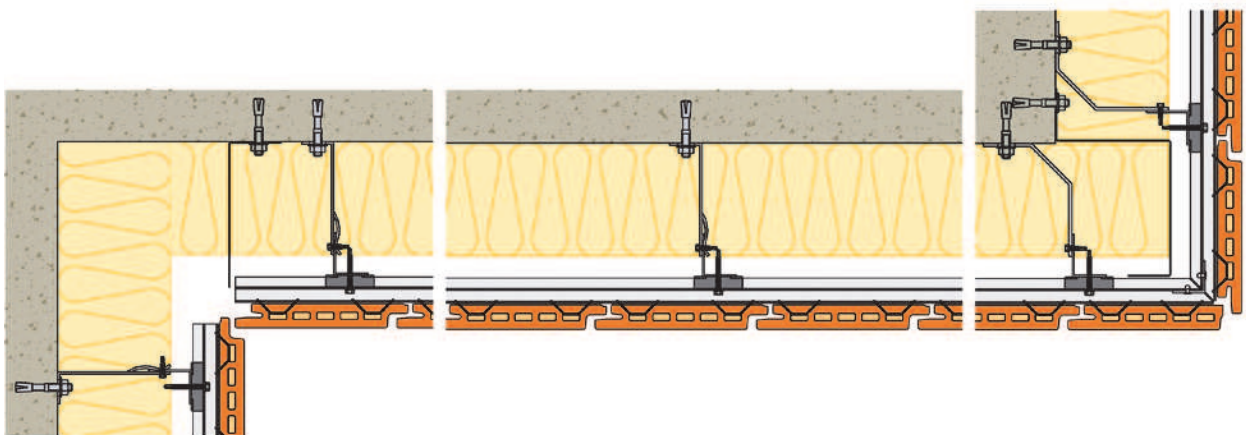
— **MONTCRIEF CANCER CENTER** —
USA

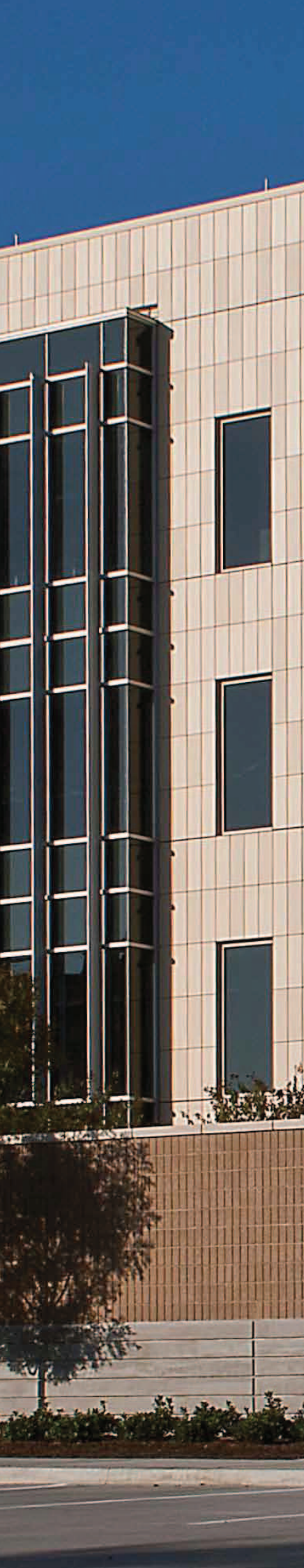
Owner : Moncrief Cancer Institute

Architect : HKS, Inc

Installer : Dee Brown, Inc.

Product : Piterak Slim 03, Champagne, smooth and ridged, laid vertically

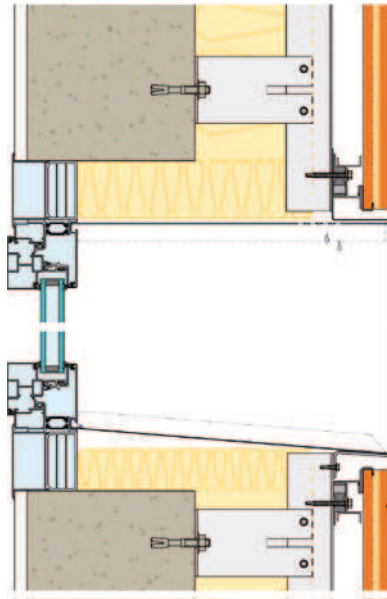




DETAIL :
**WINDOW FRAME FLUSH
WITH INSIDE AND OUTSIDE WALL**

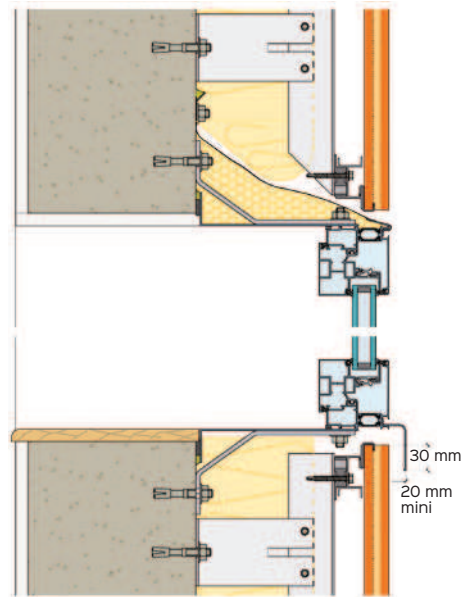


Lintel

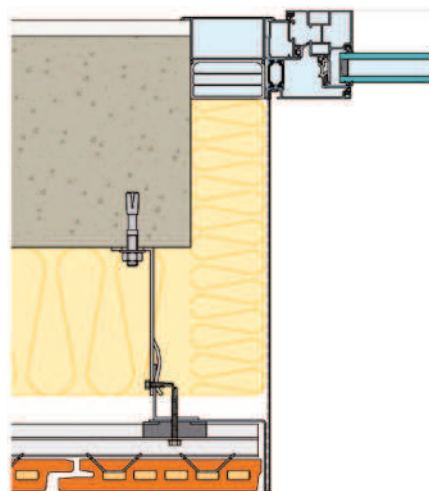


Window sill

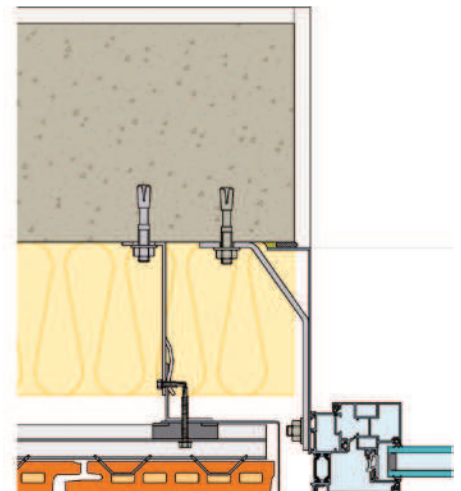
Lintel



Window sill

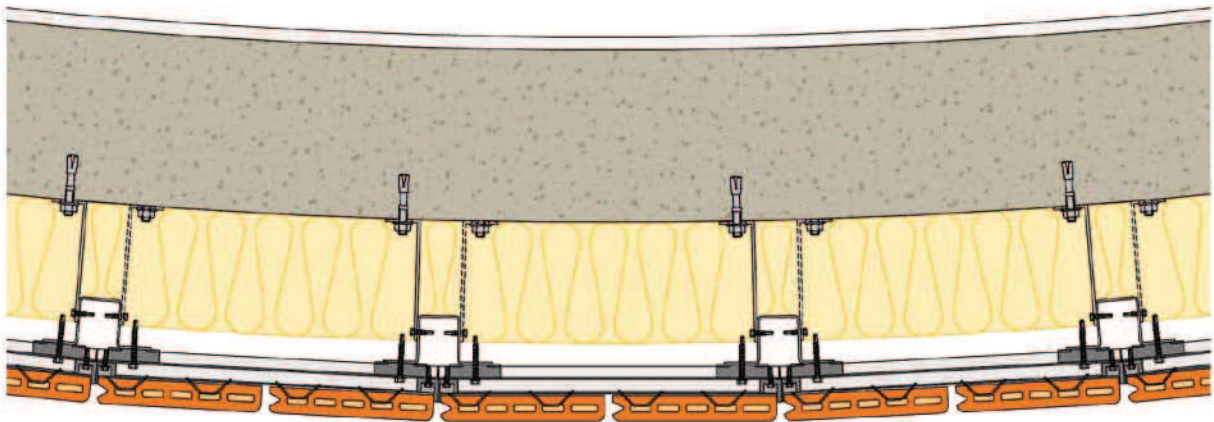
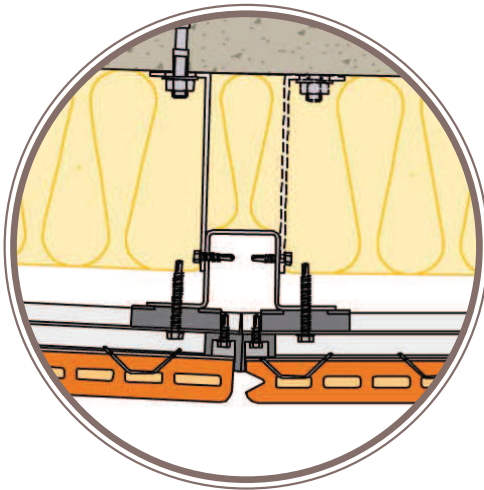
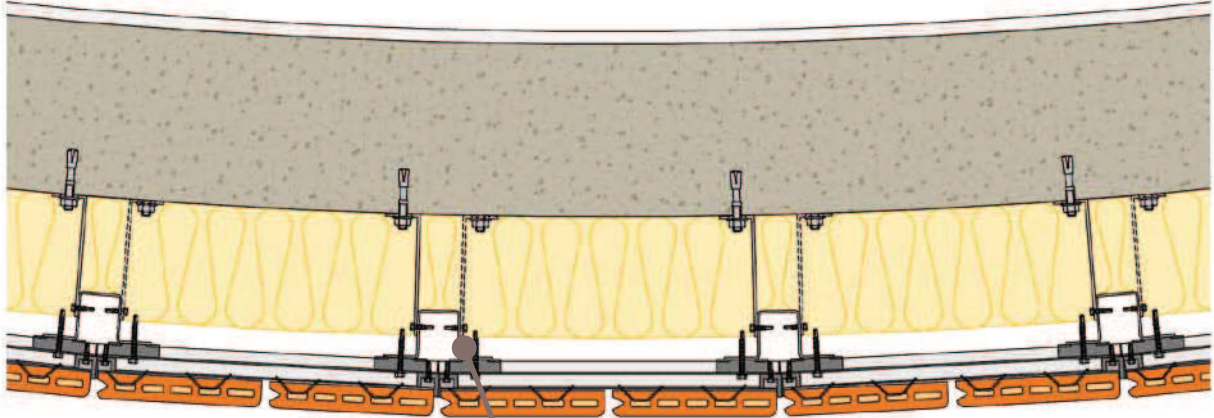


Jambs



Jambs

.....
INSTALLATION ON
CURVED WALLS





— TOULOUSE TRIBUNAL, TOULOUSE, FRANCE —

Client : Ministère de la Justice
Architect : Pascal Prunet
Contractor : SMAC Toulouse
Product : Maestral Red-Orange