

**NOTE**

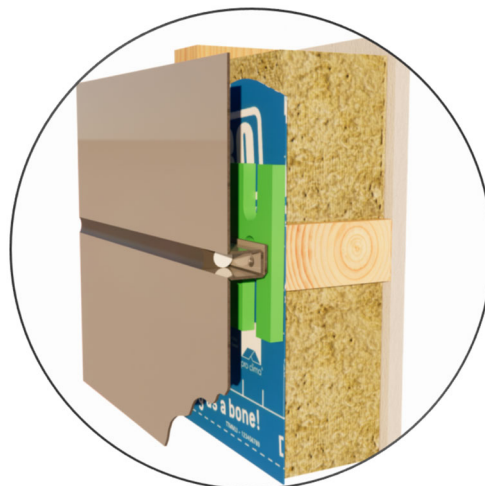
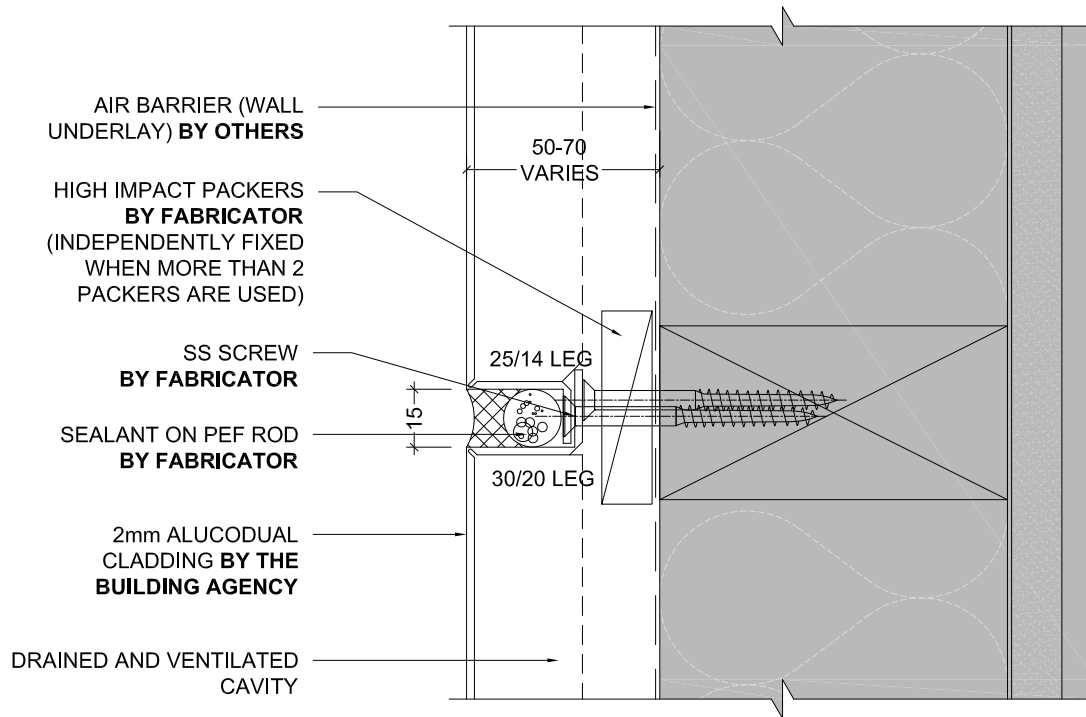
TIMBER FRAMING BY OTHERS TO BE AT 600 CTRS MAX FOR BOTH STUDS & NOGS. MAY BE REQUIRED AT CLOSER CENTERS SUBJECT TO ENGINEERING REQUIREMENTS

## VERTICAL JOINT

Detail Number \_\_\_\_\_  
Version \_\_\_\_\_  
[v1.0]



MATERIALS • SYSTEMS • SOLUTIONS



**NOTE**

TIMBER FRAMING BY OTHERS TO BE AT 600 CTRS MAX FOR BOTH STUDS & NOGS. MAY BE REQUIRED AT CLOSER CENTERS SUBJECT TO ENGINEERING REQUIREMENTS

## HORIZONTAL JOINT

Detail Number \_\_\_\_\_

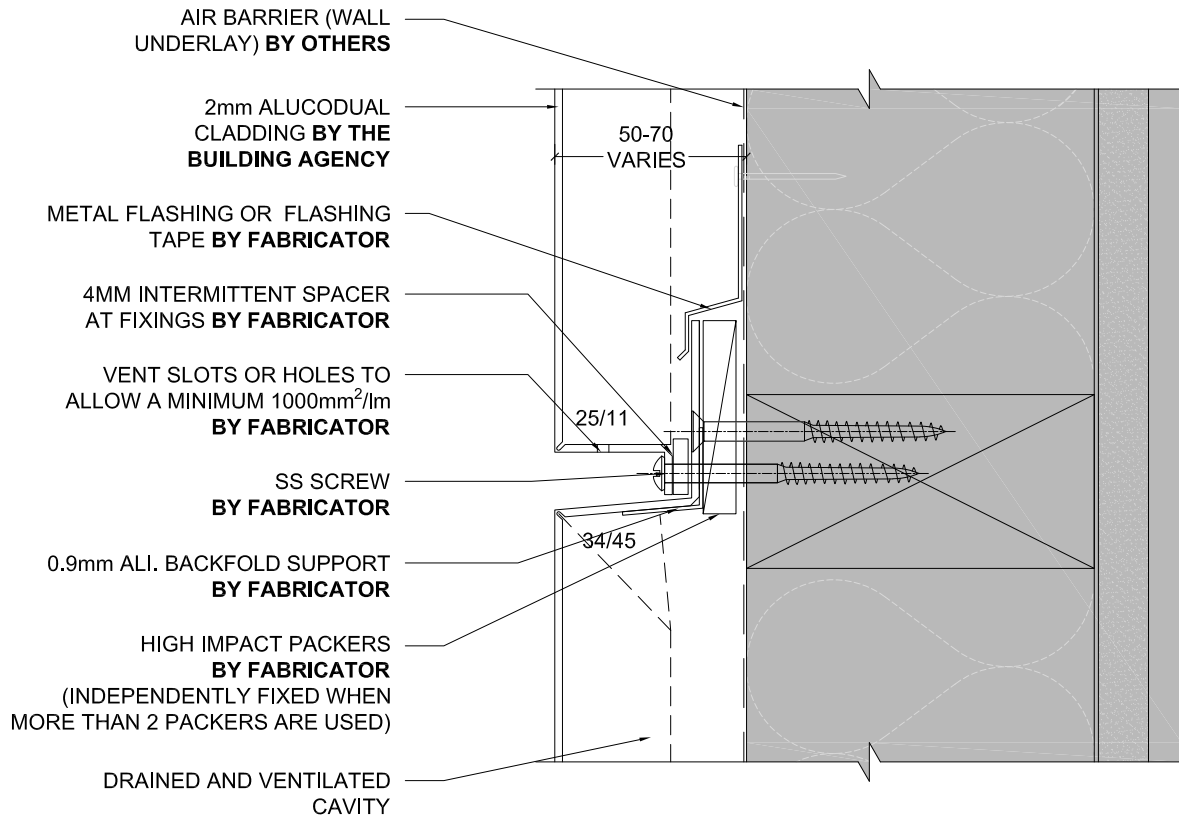
Version \_\_\_\_\_

2.0

[v1.0]

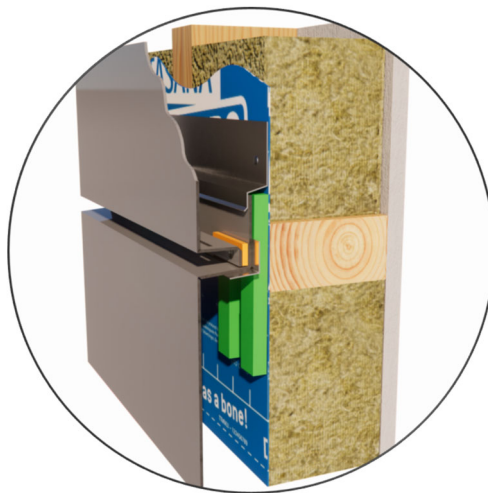


MATERIALS • SYSTEMS • SOLUTIONS



**NOTE**  
TIMBER FRAMING BY OTHERS TO BE AT 600 CTRS MAX FOR BOTH STUDS & NOGS. MAY BE REQUIRED AT CLOSER CENTERS SUBJECT TO ENGINEERING REQUIREMENTS

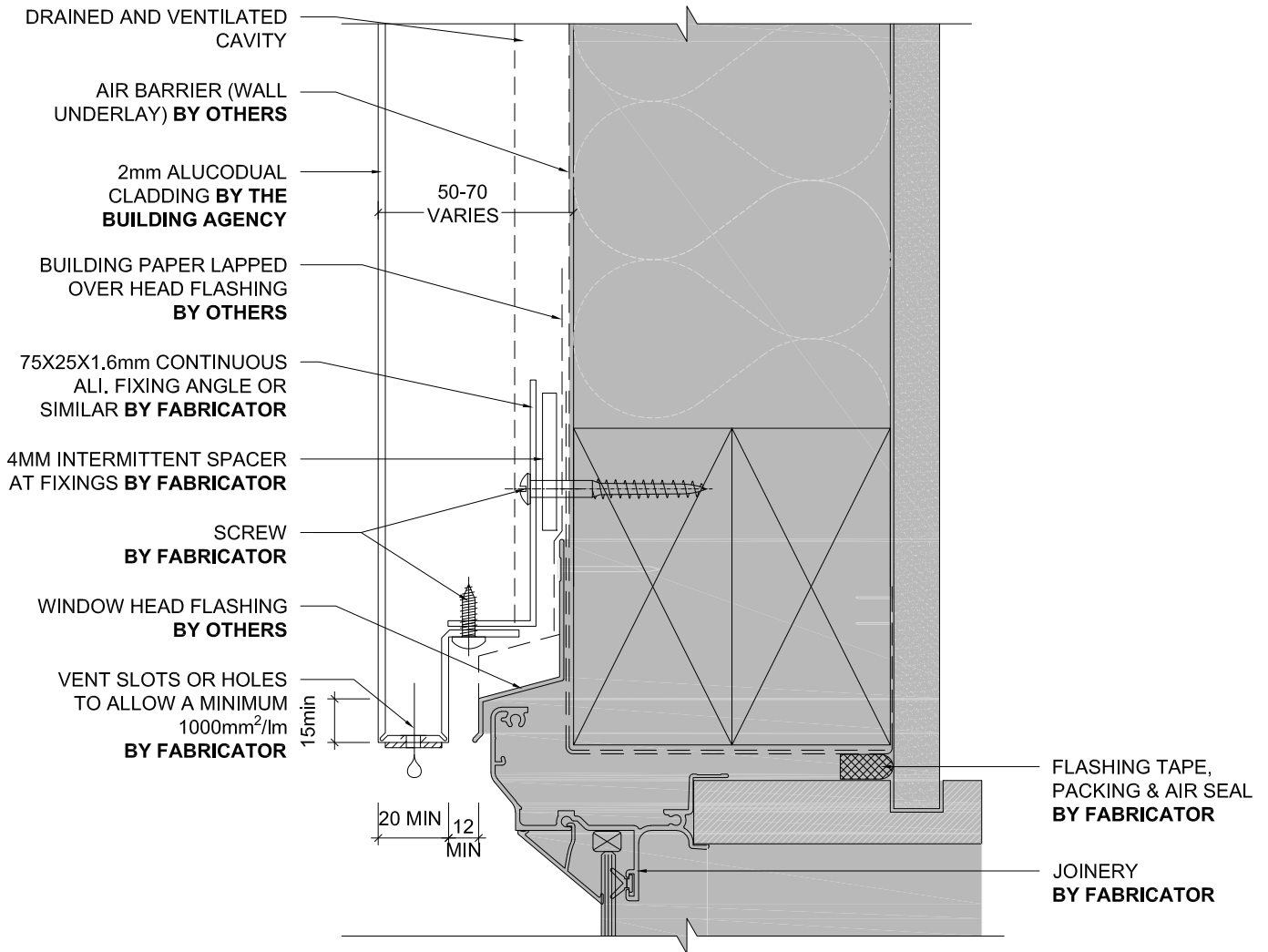
**NOTE**  
OPEN DRAINAGE JOINT IS ONLY REQUIRED ON HIGHRISE BUILDINGS AT EVERY SECOND FLOOR LEVEL.  
FOR BUILDINGS WHERE THE ACP WALL SPANS OVER MORE THAN 3 STOREYS HIGH.



## 15MM HORIZONTAL OPEN JOINT

Detail Number \_\_\_\_\_  
Version \_\_\_\_\_  
[v1.0]





## WINDOW HEAD RESIDENTIAL JOINERY

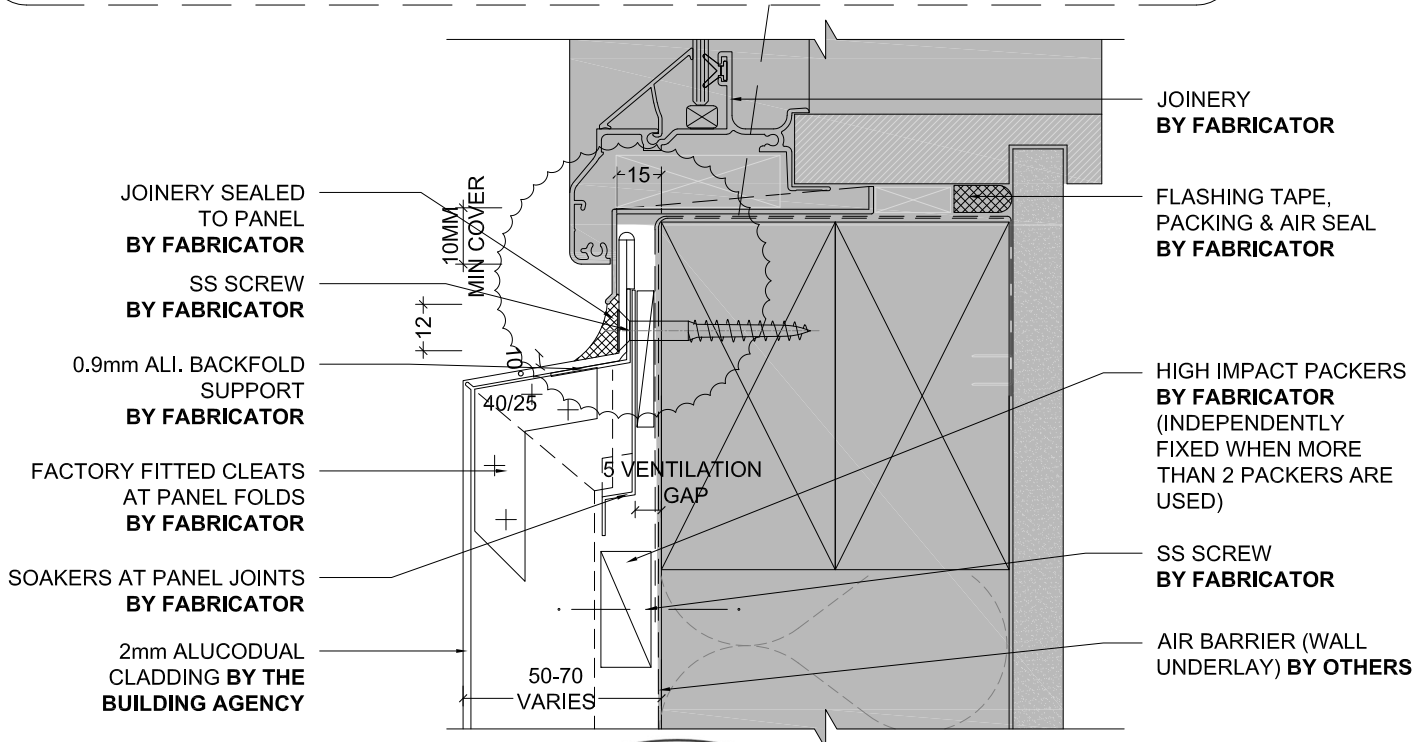
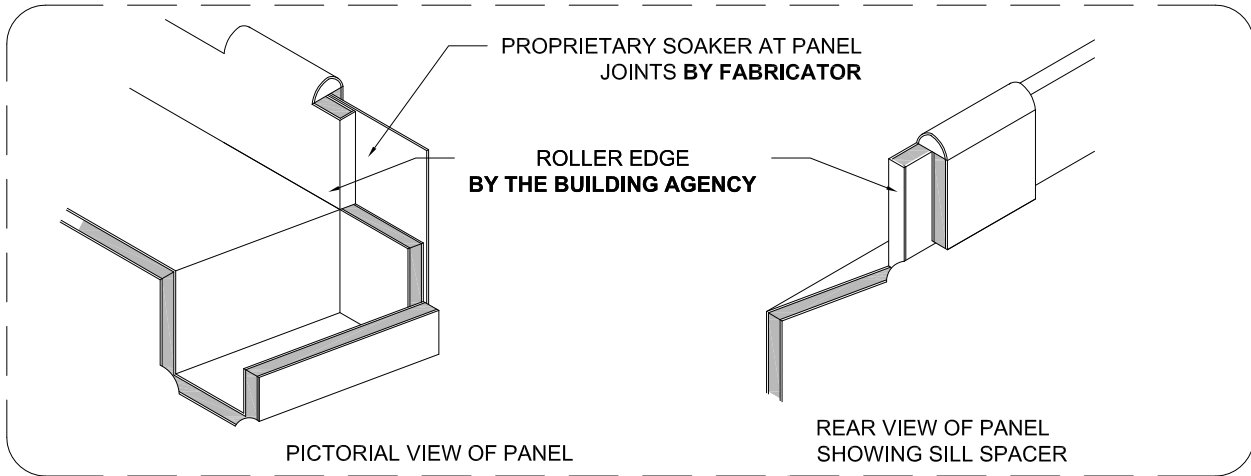
Detail Number \_\_\_\_\_  
 Version \_\_\_\_\_  
 3.1.0  
 [v1.0]



MATERIALS • SYSTEMS • SOLUTIONS

# ALUCODUAL

R&R SYSTEM



## WINDOW SILL RESIDENTIAL JOINERY

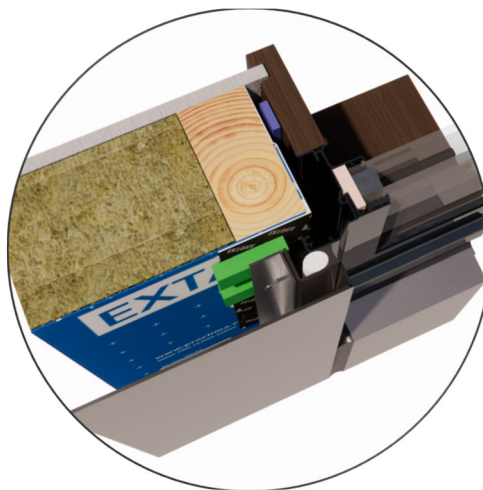
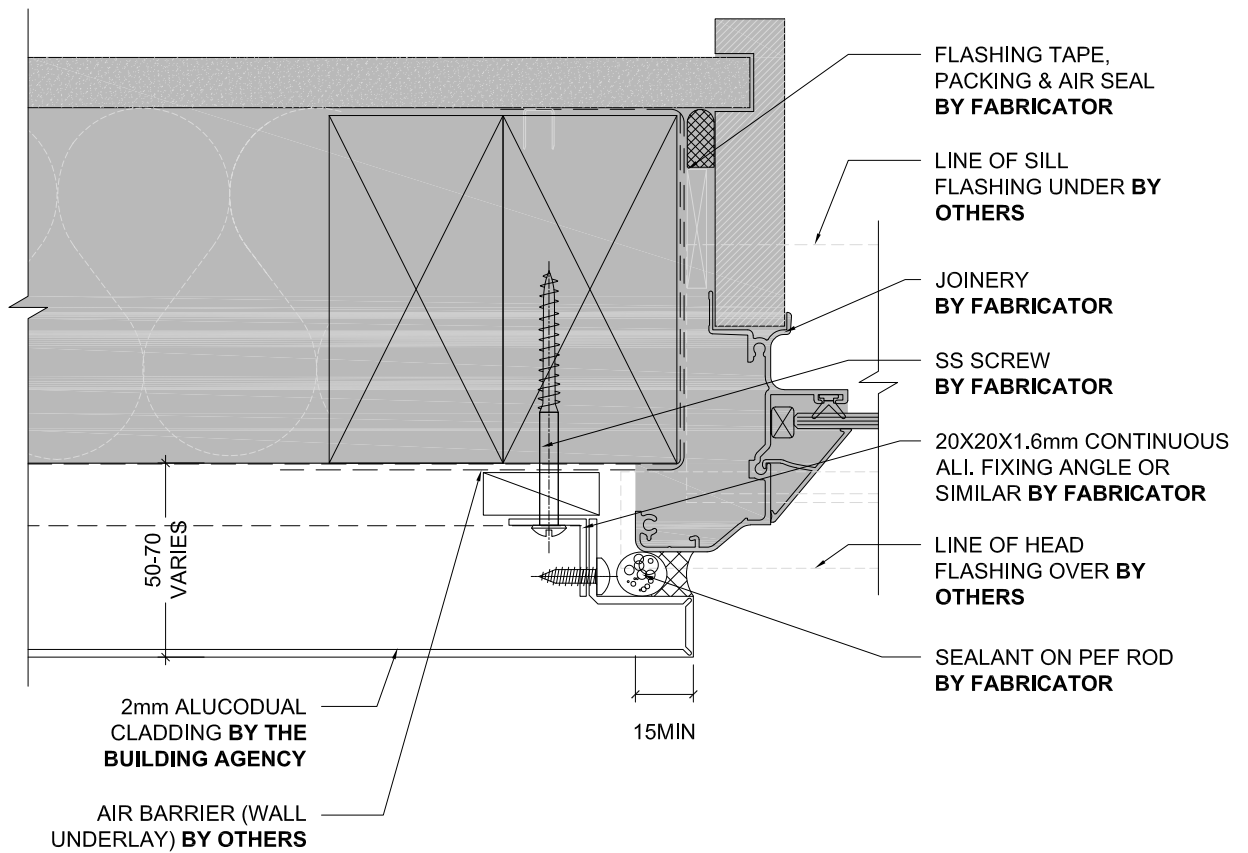
Detail Number \_\_\_\_\_  
Version \_\_\_\_\_

3.1.1

[v1.0]



MATERIALS • SYSTEMS • SOLUTIONS

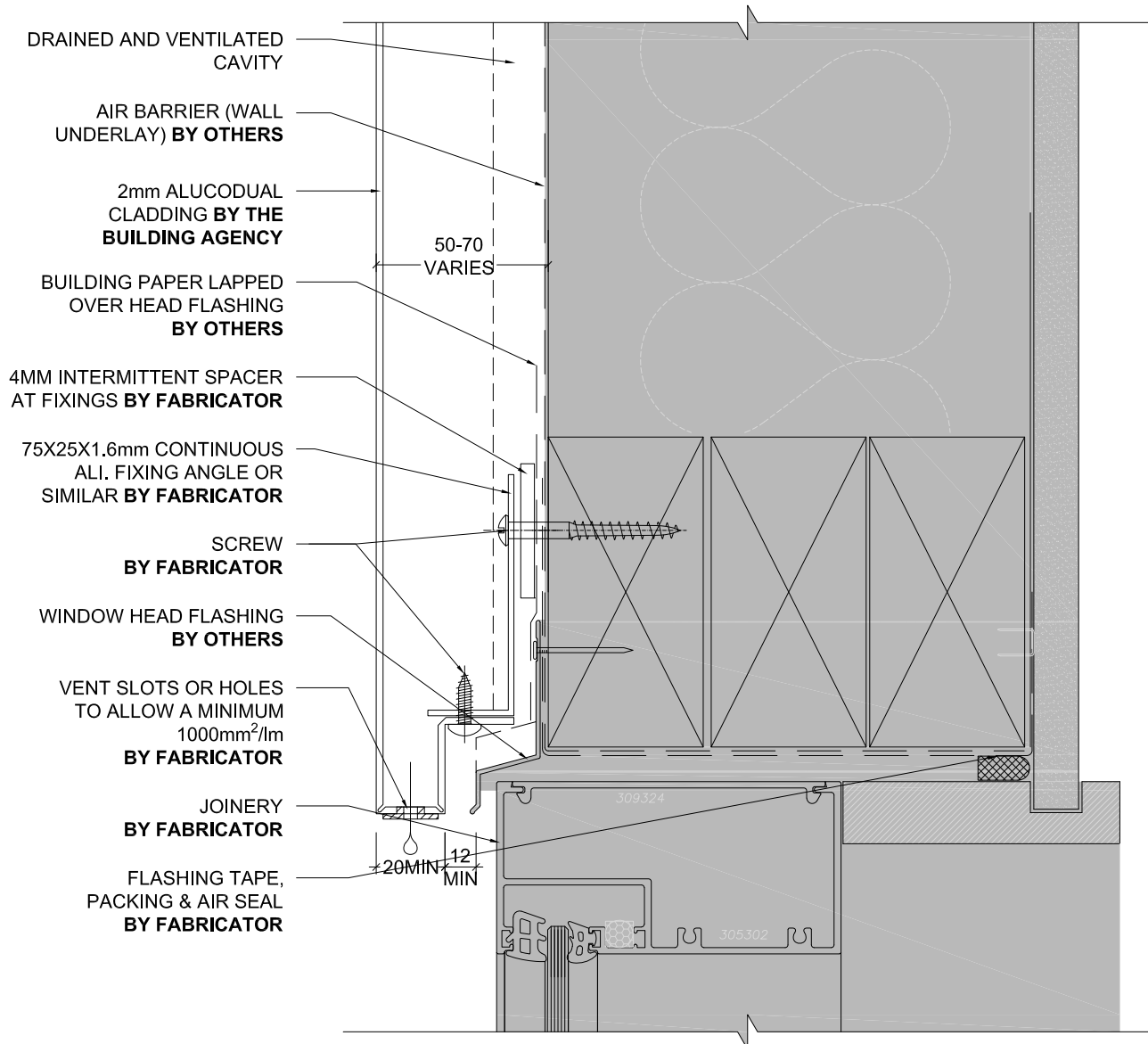


## WINDOW JAMB RESIDENTIAL JOINERY

Detail Number \_\_\_\_\_  
Version \_\_\_\_\_  
3.1.2  
[v1.0]



MATERIALS • SYSTEMS • SOLUTIONS



## WINDOW HEAD COMMERCIAL JOINERY

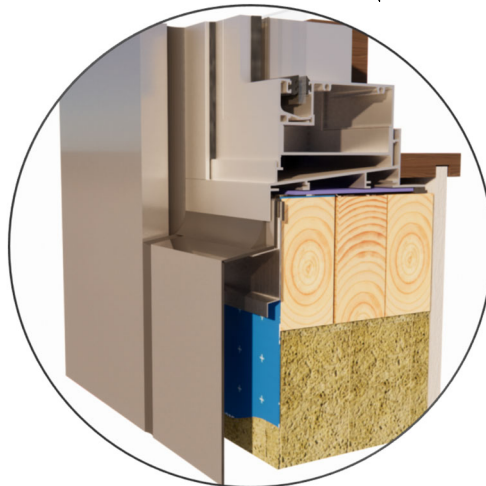
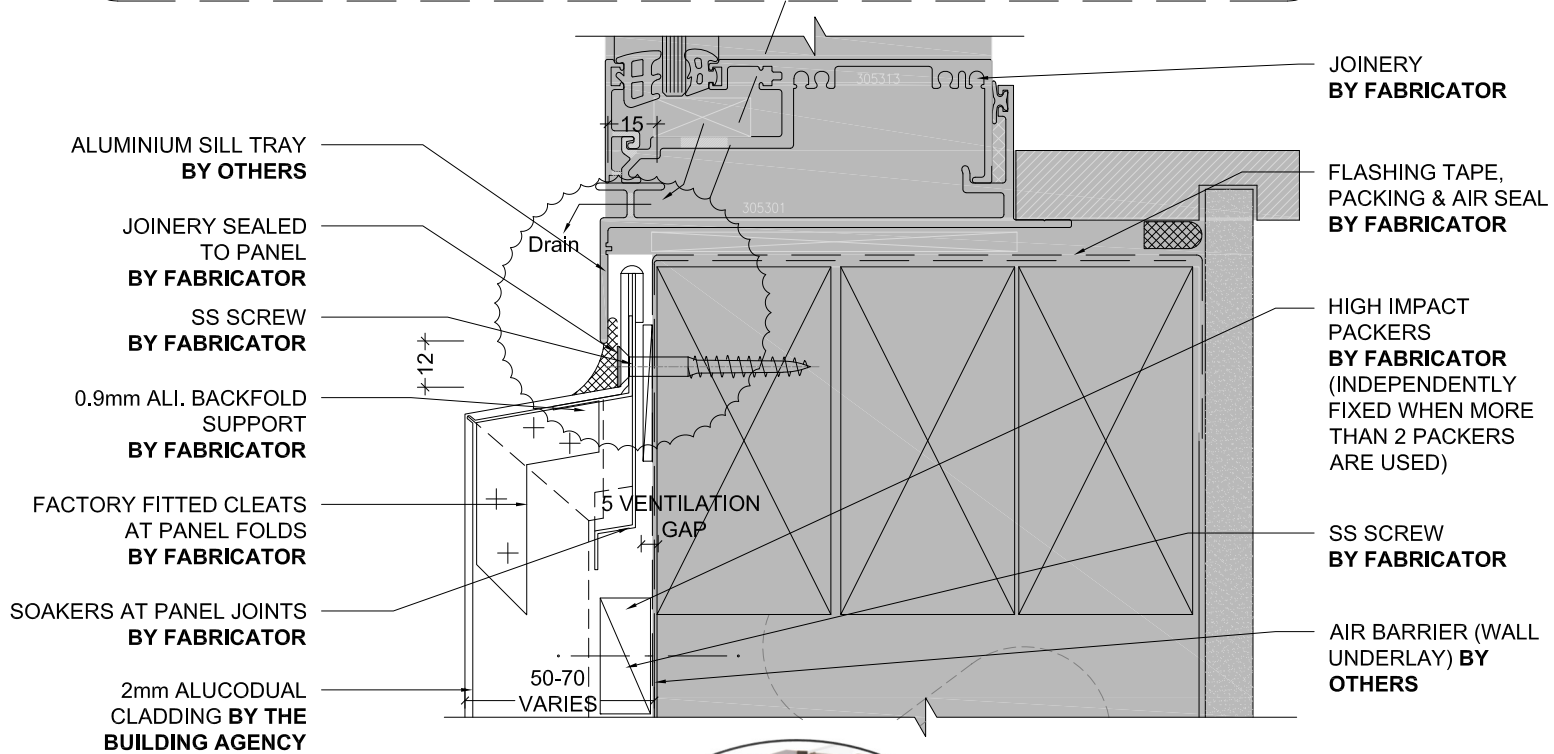
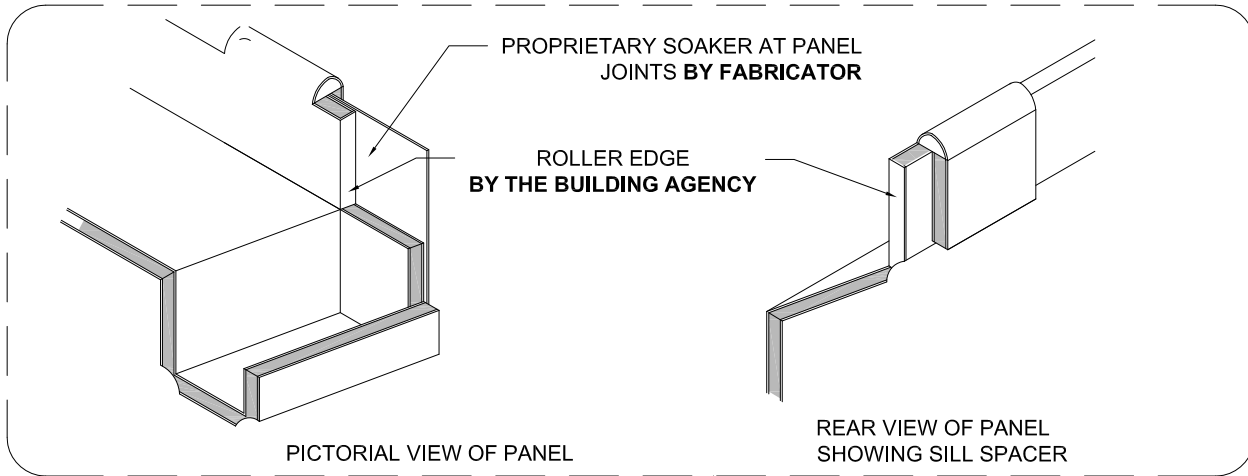
Detail Number \_\_\_\_\_  
 Version \_\_\_\_\_  
 3.2.0  
 [v1.0]



MATERIALS • SYSTEMS • SOLUTIONS

# ALUCODUAL

R&R SYSTEM



WINDOW SILL  
COMMERCIAL  
JOINERY

Detail Number \_\_\_\_\_  
Version \_\_\_\_\_  
[v1.0]

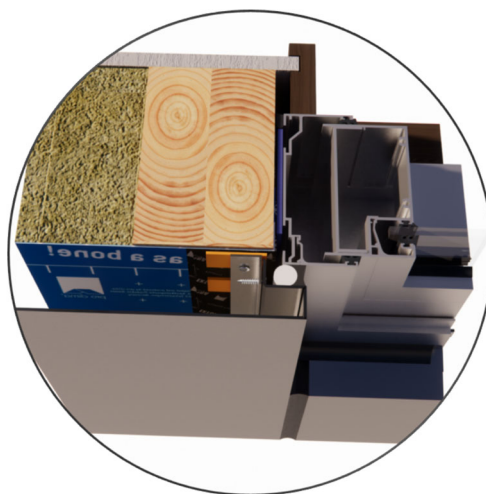
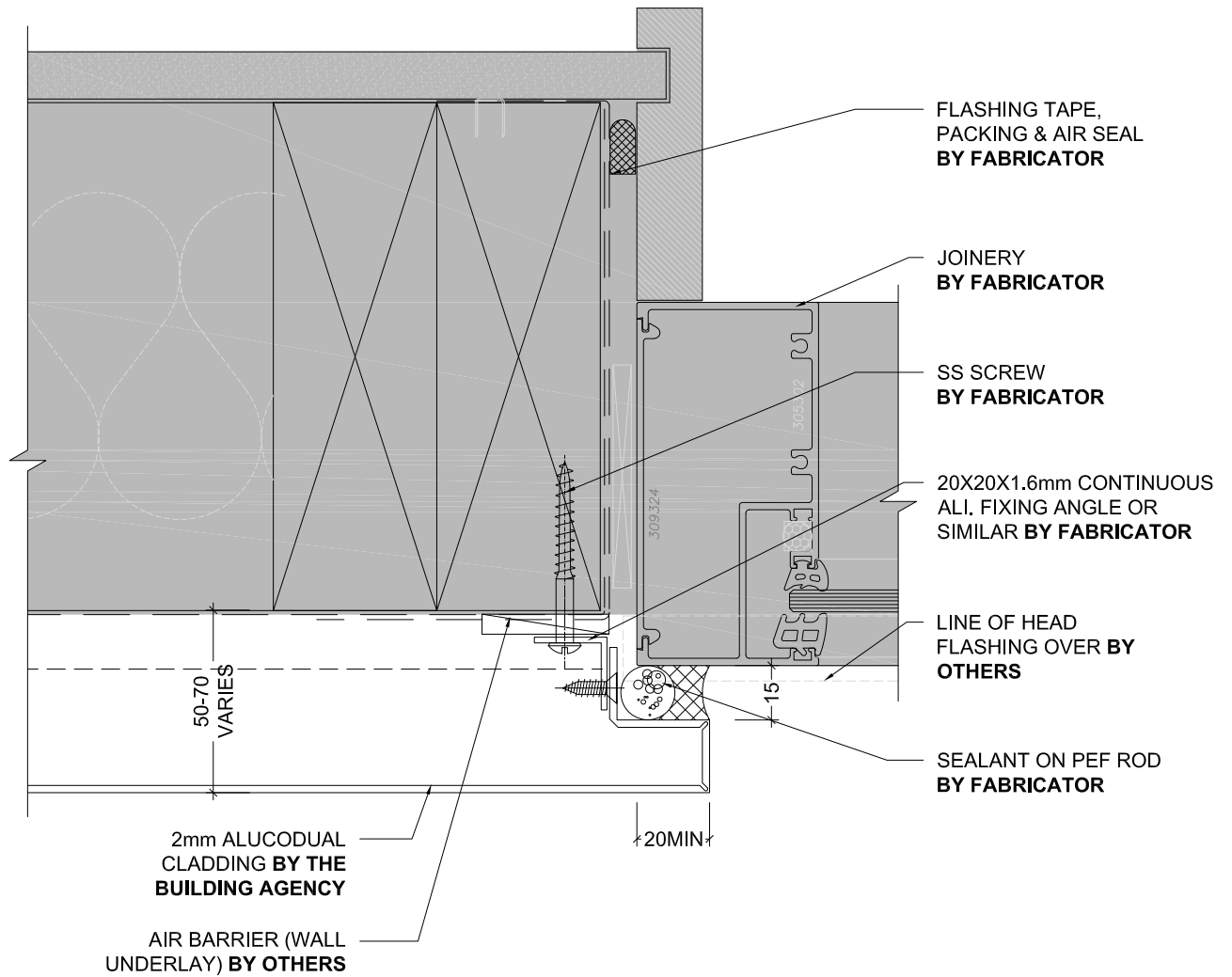


MATERIALS • SYSTEMS • SOLUTIONS



# ALUCODUAL

R&R SYSTEM



## WINDOW JAMB COMMERCIAL JOINERY

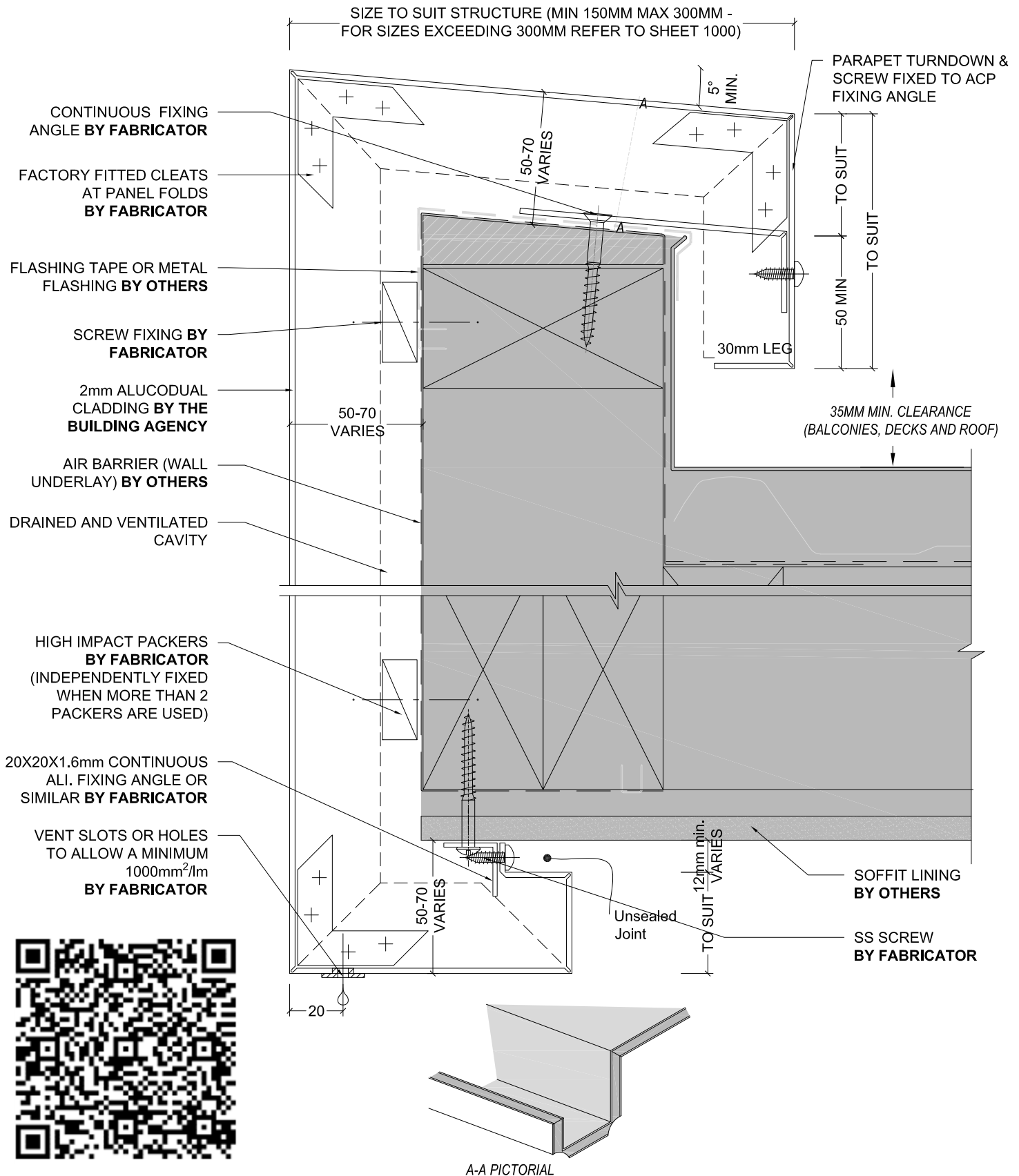
Detail Number \_\_\_\_\_  
Version \_\_\_\_\_

3.2.2

[v1.0]



MATERIALS • SYSTEMS • SOLUTIONS



## FASCIA DETAIL SOFFIT BY OTHERS

Detail Number \_\_\_\_\_

Version \_\_\_\_\_

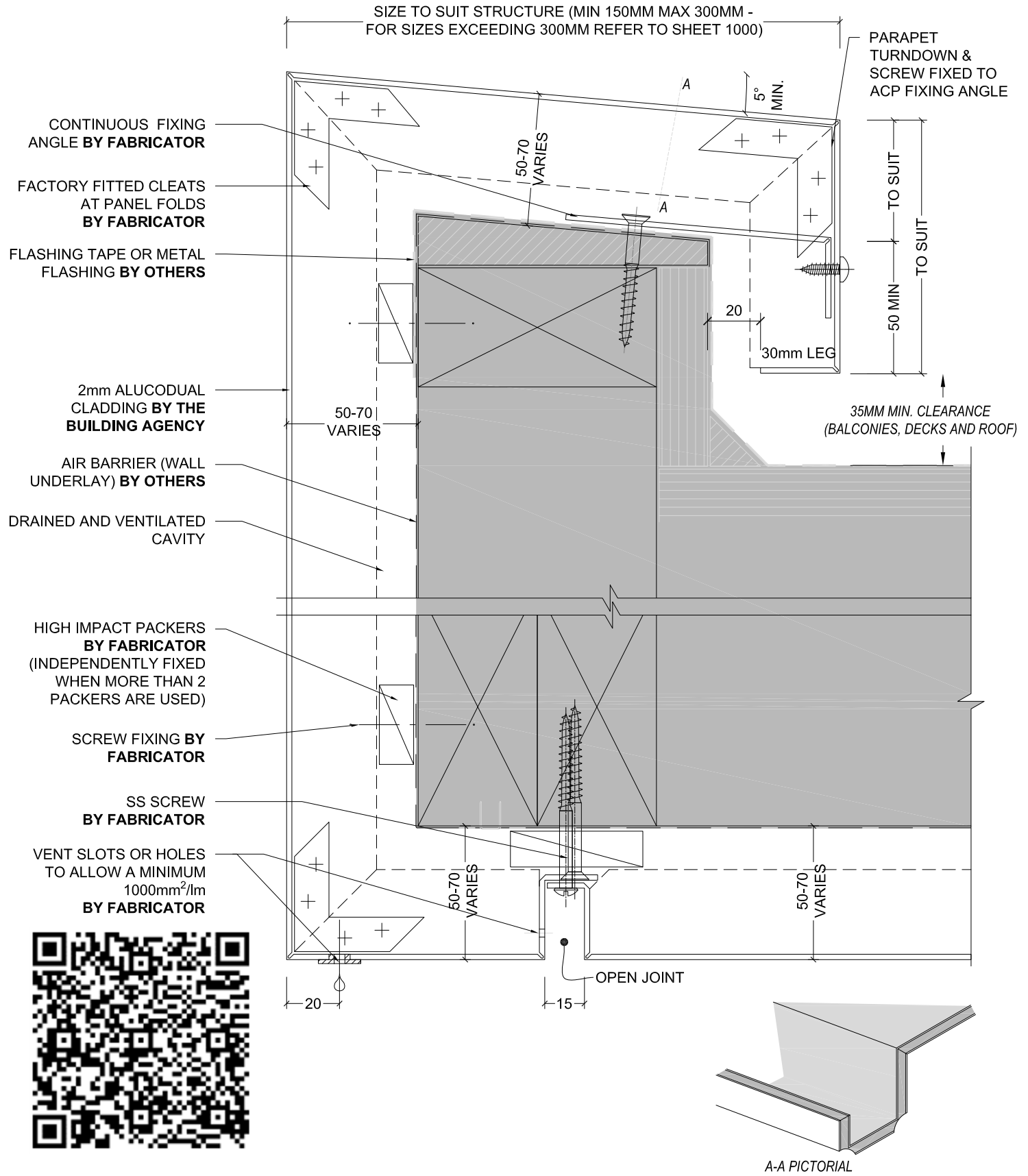
4.0

[v1.0]



# ALUCODUAL

R&R SYSTEM



## FASCIA & SOFFIT DETAIL

Detail Number \_\_\_\_\_

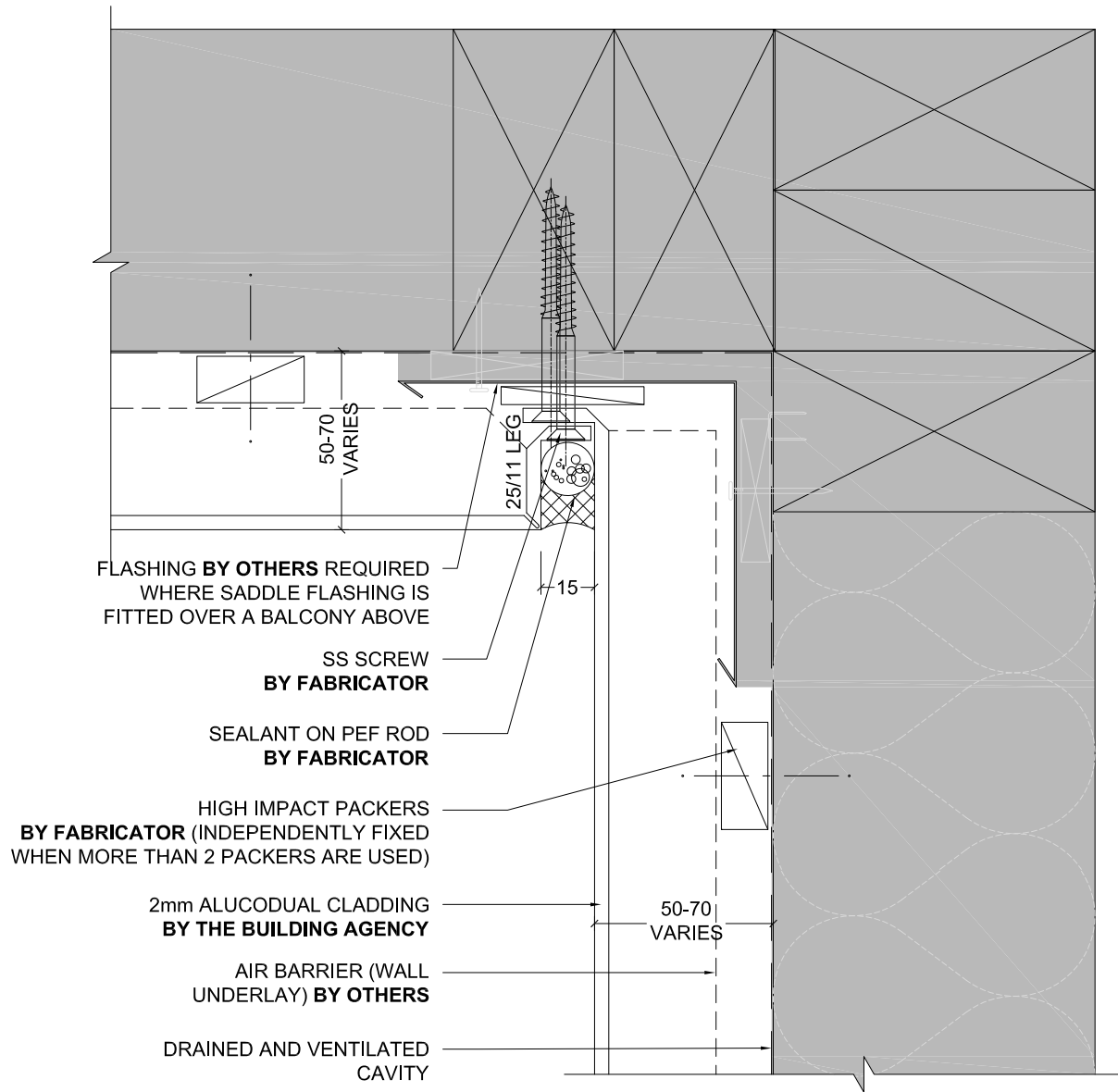
Version \_\_\_\_\_

4.1

[v1.0]



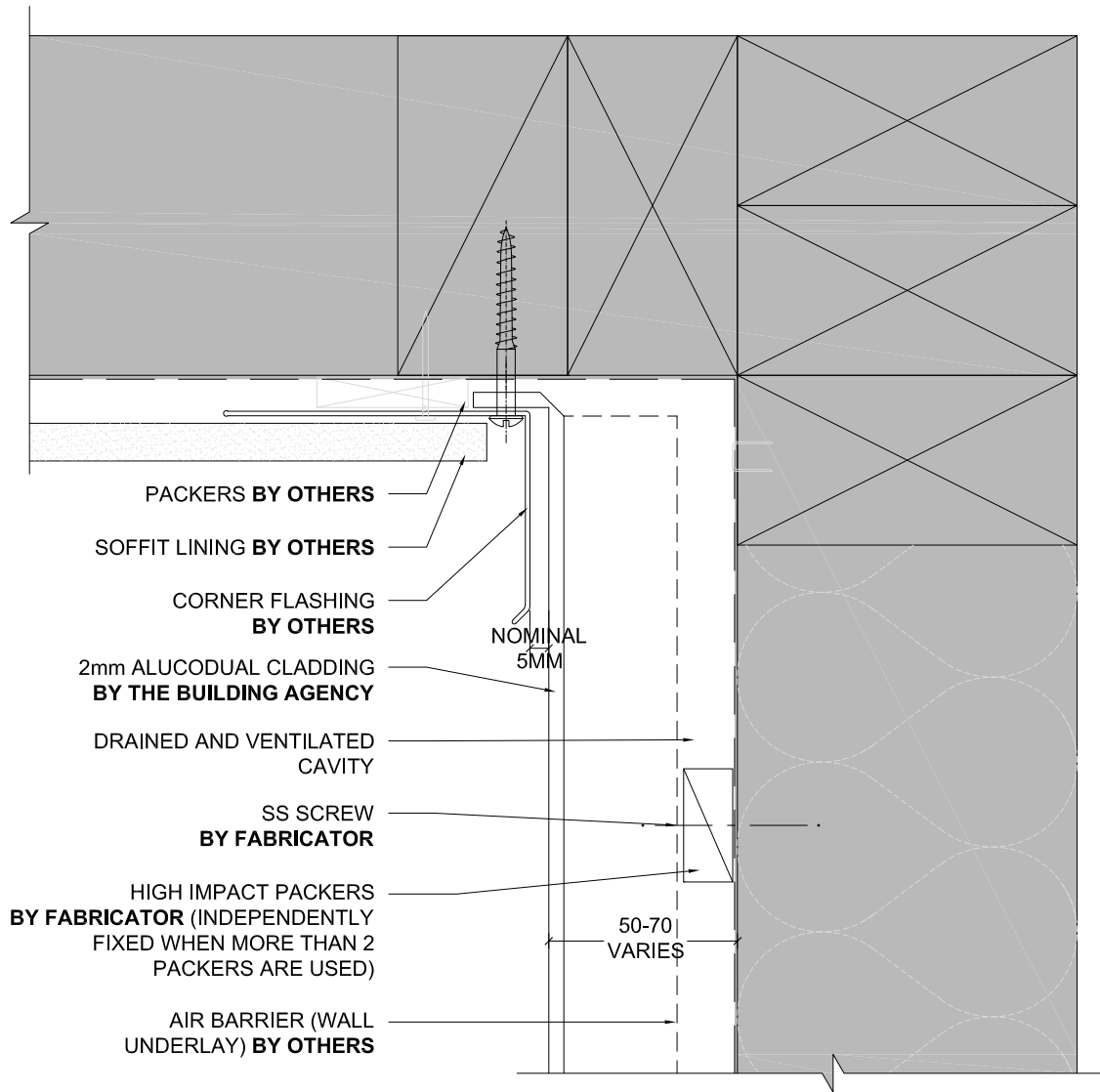
MATERIALS • SYSTEMS • SOLUTIONS



## SOFFIT / WALL JUNCTION OP 1

Detail Number \_\_\_\_\_  
 Version \_\_\_\_\_  
 [v1.0]





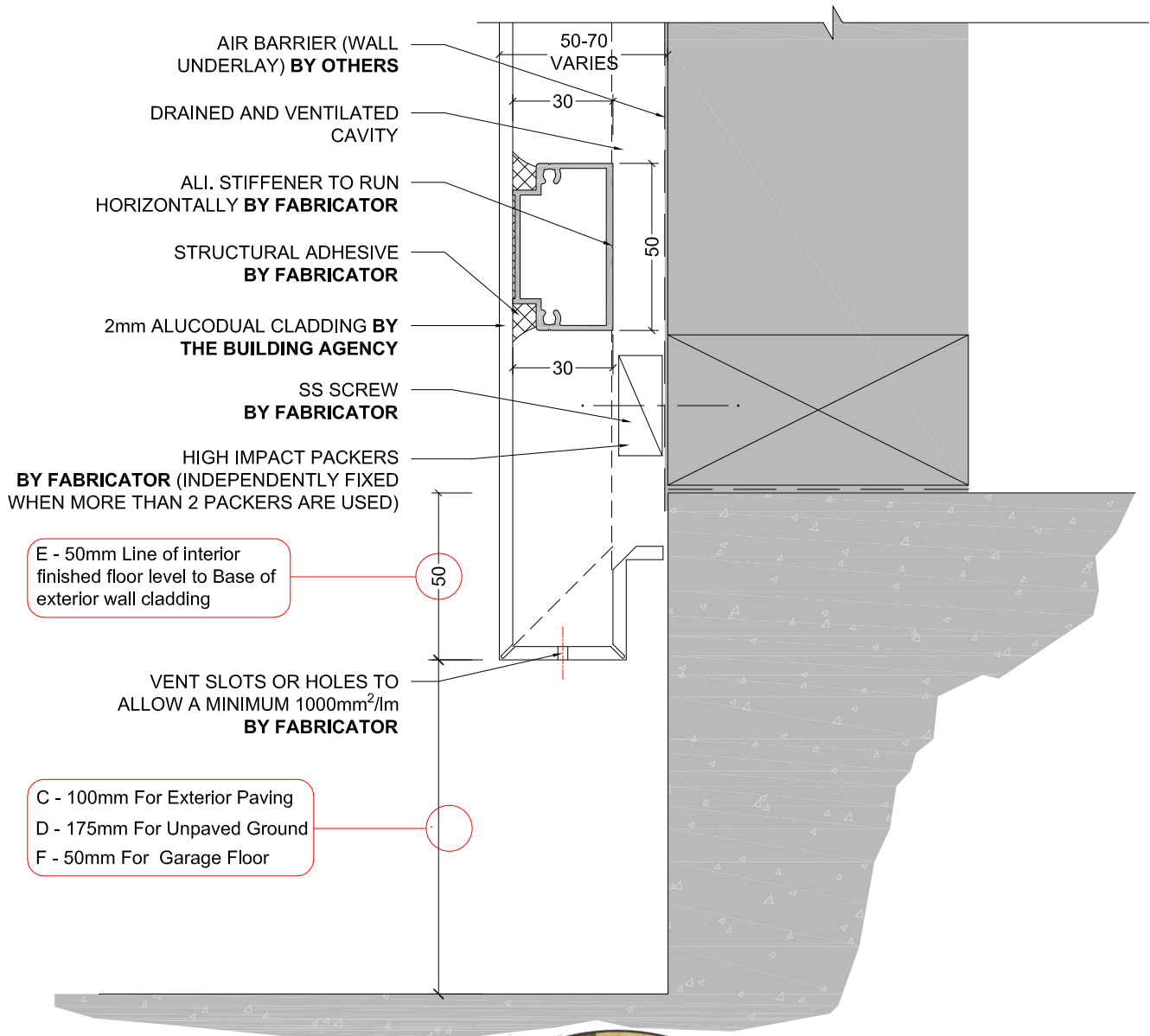
## SOFFIT / WALL JUNCTION OP 2

Detail Number  
\_\_\_\_\_  
4.2.1

Version  
\_\_\_\_\_  
[v1.0]

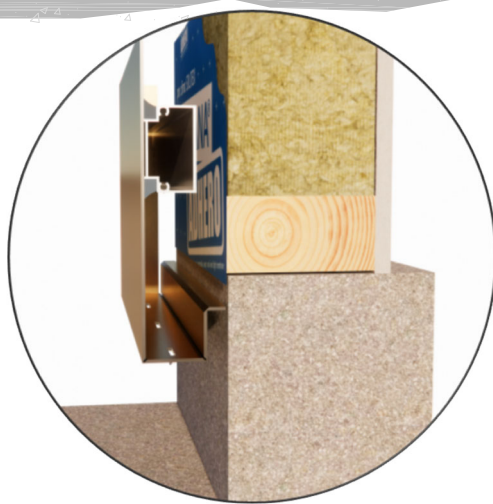


MATERIALS • SYSTEMS • SOLUTIONS



E - 50mm Line of interior finished floor level to Base of exterior wall cladding

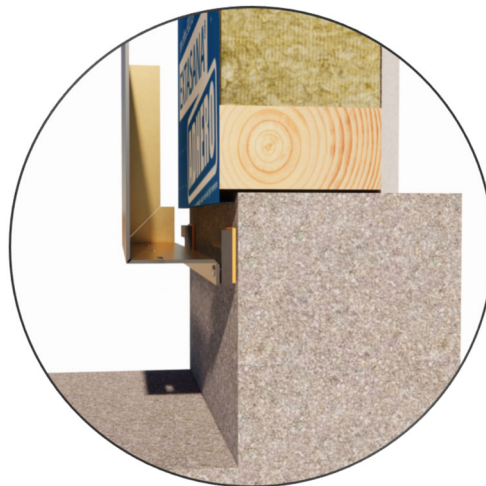
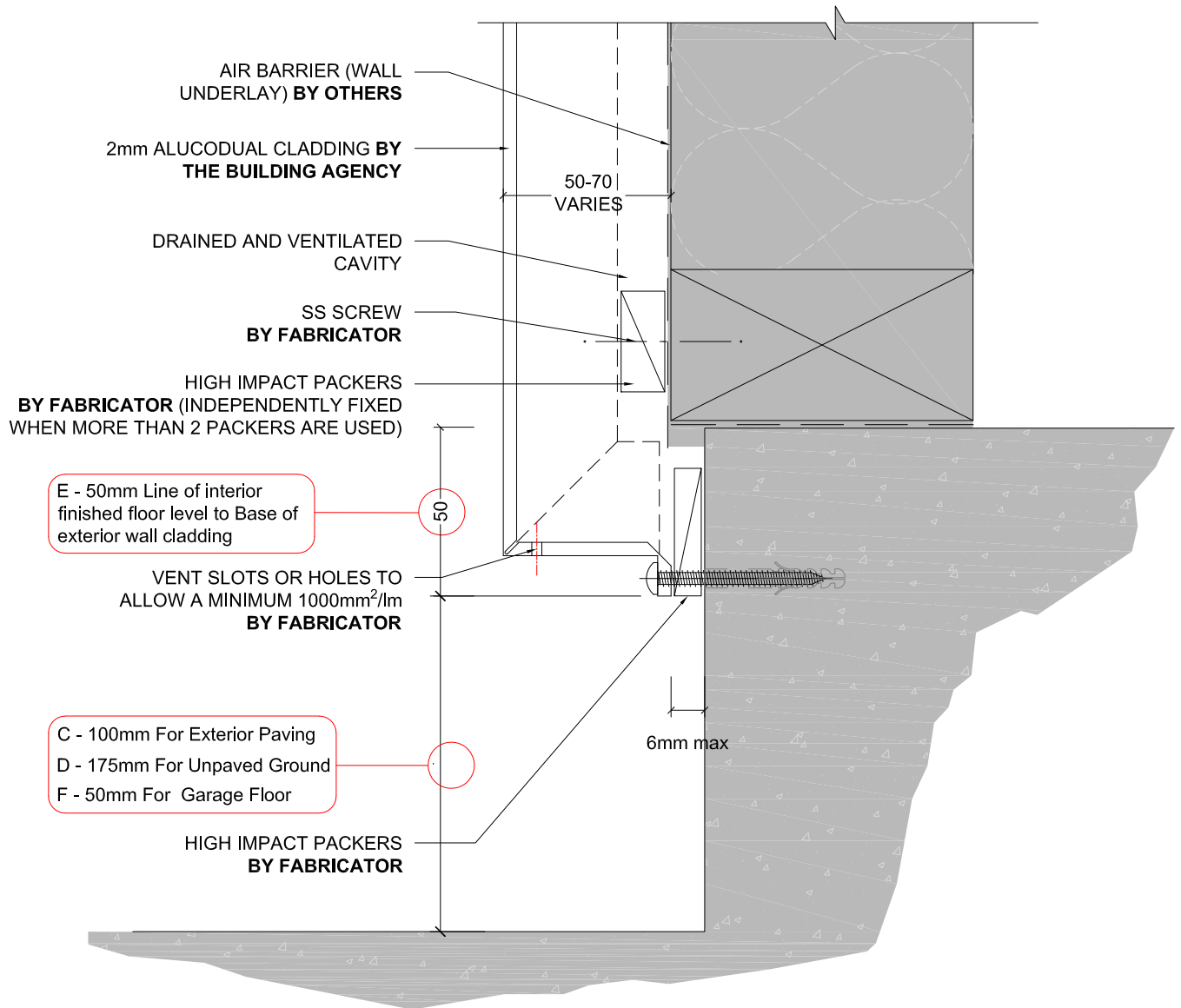
C - 100mm For Exterior Paving  
 D - 175mm For Unpaved Ground  
 F - 50mm For Garage Floor



## BASE DETAIL OP 1

Detail Number \_\_\_\_\_  
 Version \_\_\_\_\_  
 4.3.0  
 [v1.0]



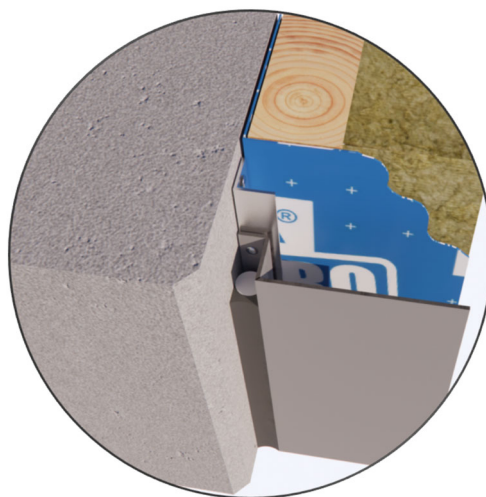
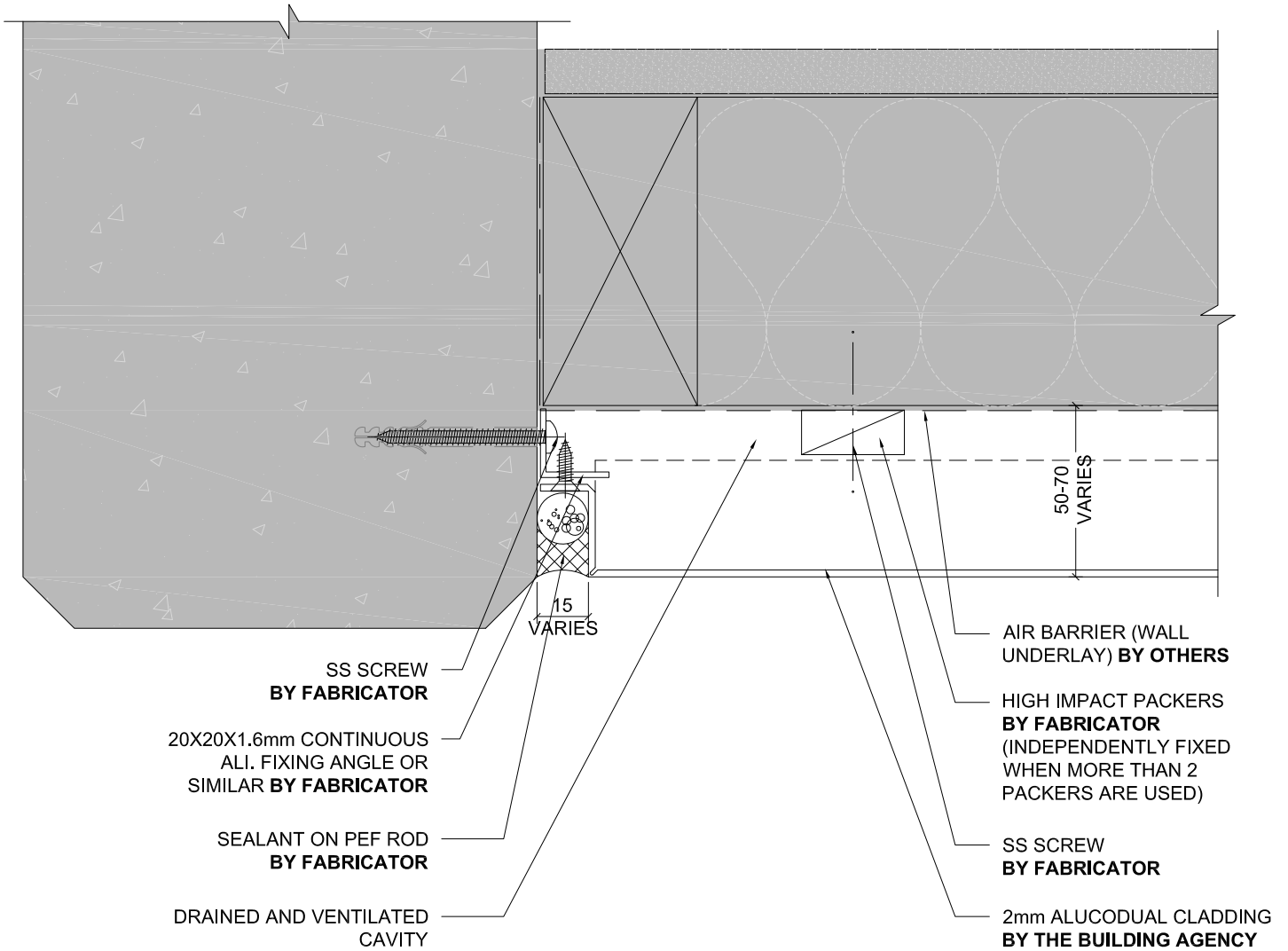


## BASE DETAIL OP 2

Detail Number  
\_\_\_\_\_  
Version  
\_\_\_\_\_  
4.3.1  
[v1.0]



MATERIALS • SYSTEMS • SOLUTIONS



## PRECAST JUNCTION DETAIL OP 1

Detail Number \_\_\_\_\_  
Version \_\_\_\_\_  
[v1.0]



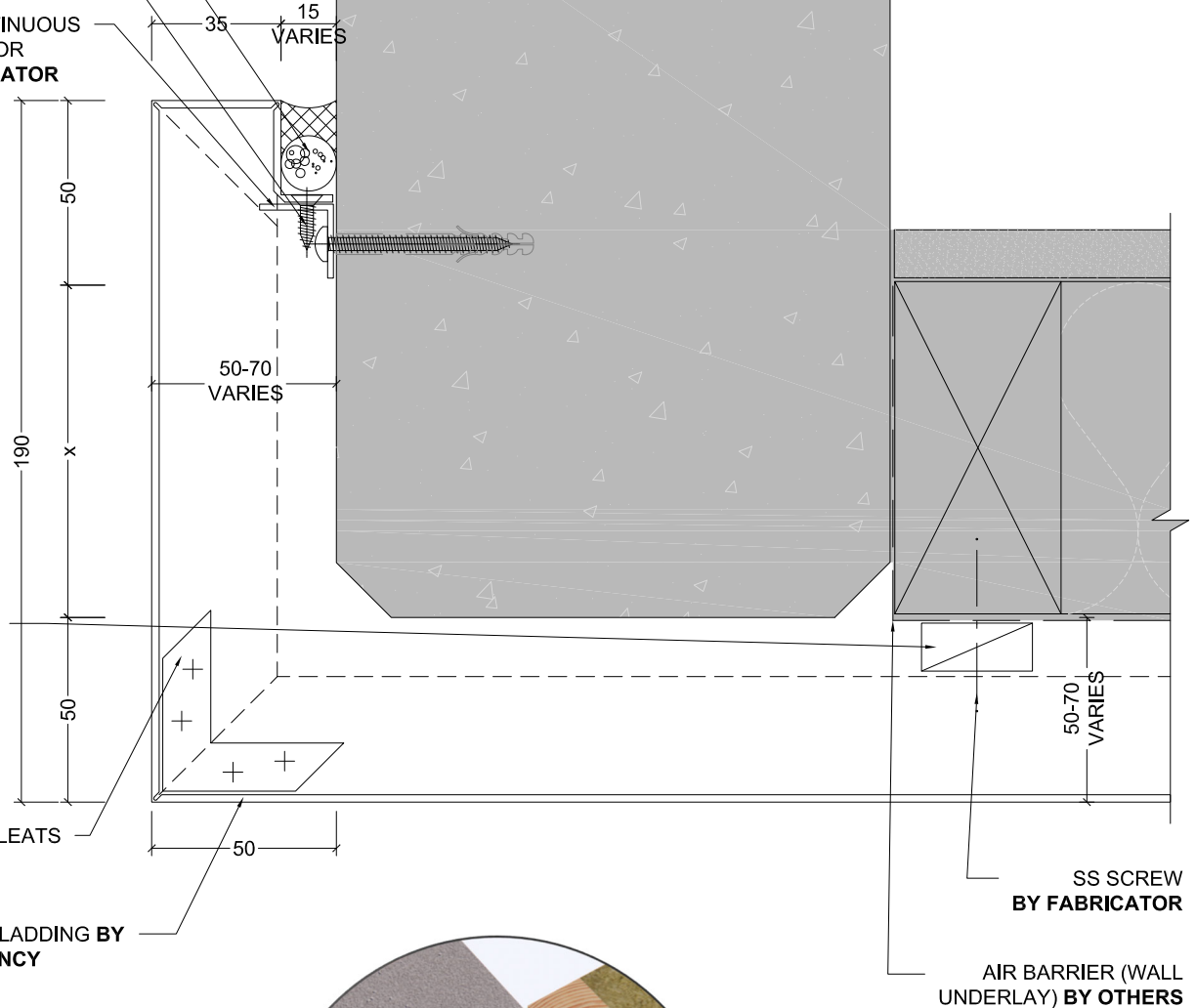
# ALUCODUAL

R&R SYSTEM

SEALANT ON PEF ROD  
BY FABRICATOR

SS SCREW  
BY FABRICATOR

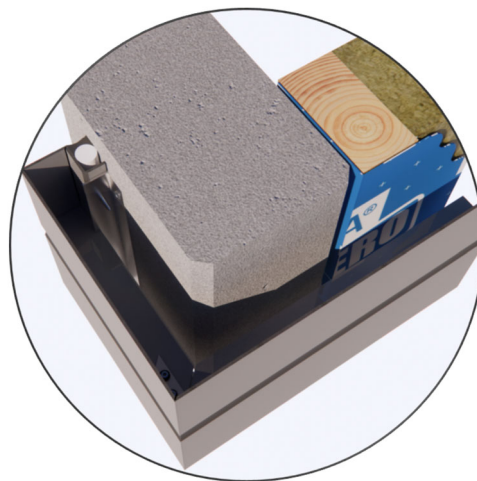
20X20X1.6mm CONTINUOUS  
ALI. FIXING ANGLE OR  
SIMILAR BY FABRICATOR



HIGH IMPACT  
PACKERS  
BY FABRICATOR  
(INDEPENDENTLY  
FIXED WHEN MORE  
THAN 2 PACKERS  
ARE USED)

FACTORY FITTED CLEATS  
AT PANEL FOLDS  
BY FABRICATOR

2mm ALUCODUAL CLADDING BY  
THE BUILDING AGENCY



PRECAST  
JUNCTION DETAIL  
OP 2

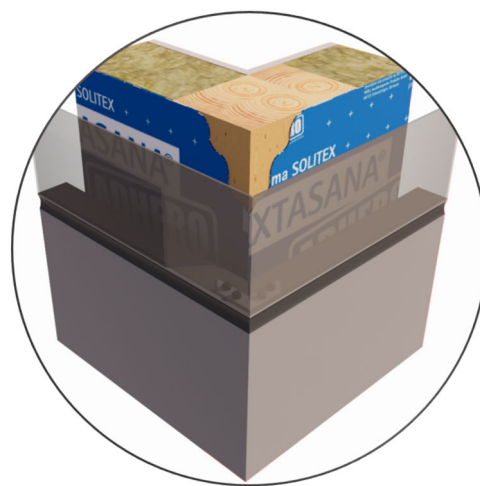
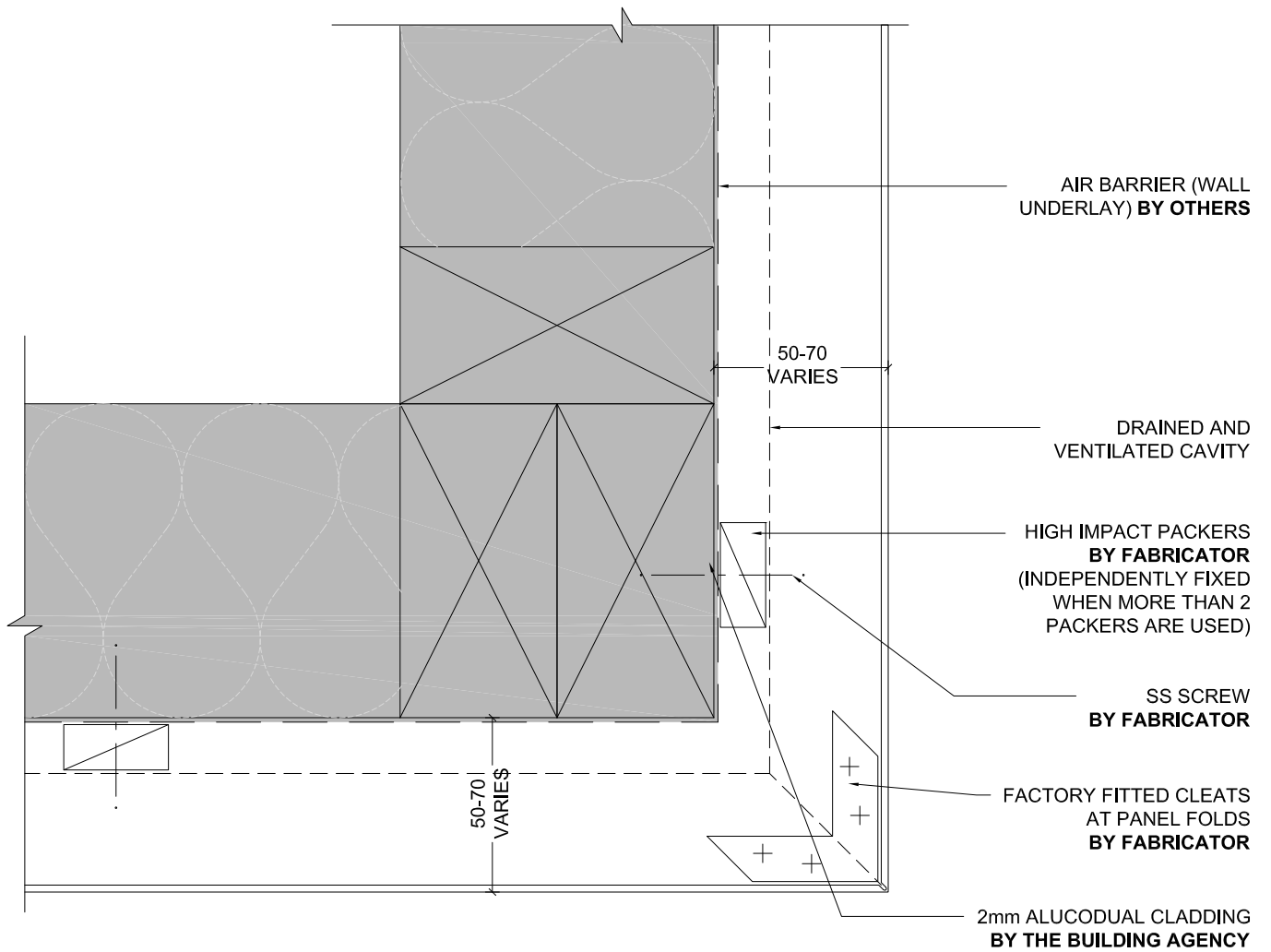
Detail Number \_\_\_\_\_  
Version \_\_\_\_\_  
[v1.0]

**BA** THE  
BUILDING  
AGENCY

MATERIALS • SYSTEMS • SOLUTIONS

# ALUCODUAL

R&R SYSTEM



EXTERNAL  
CORNER

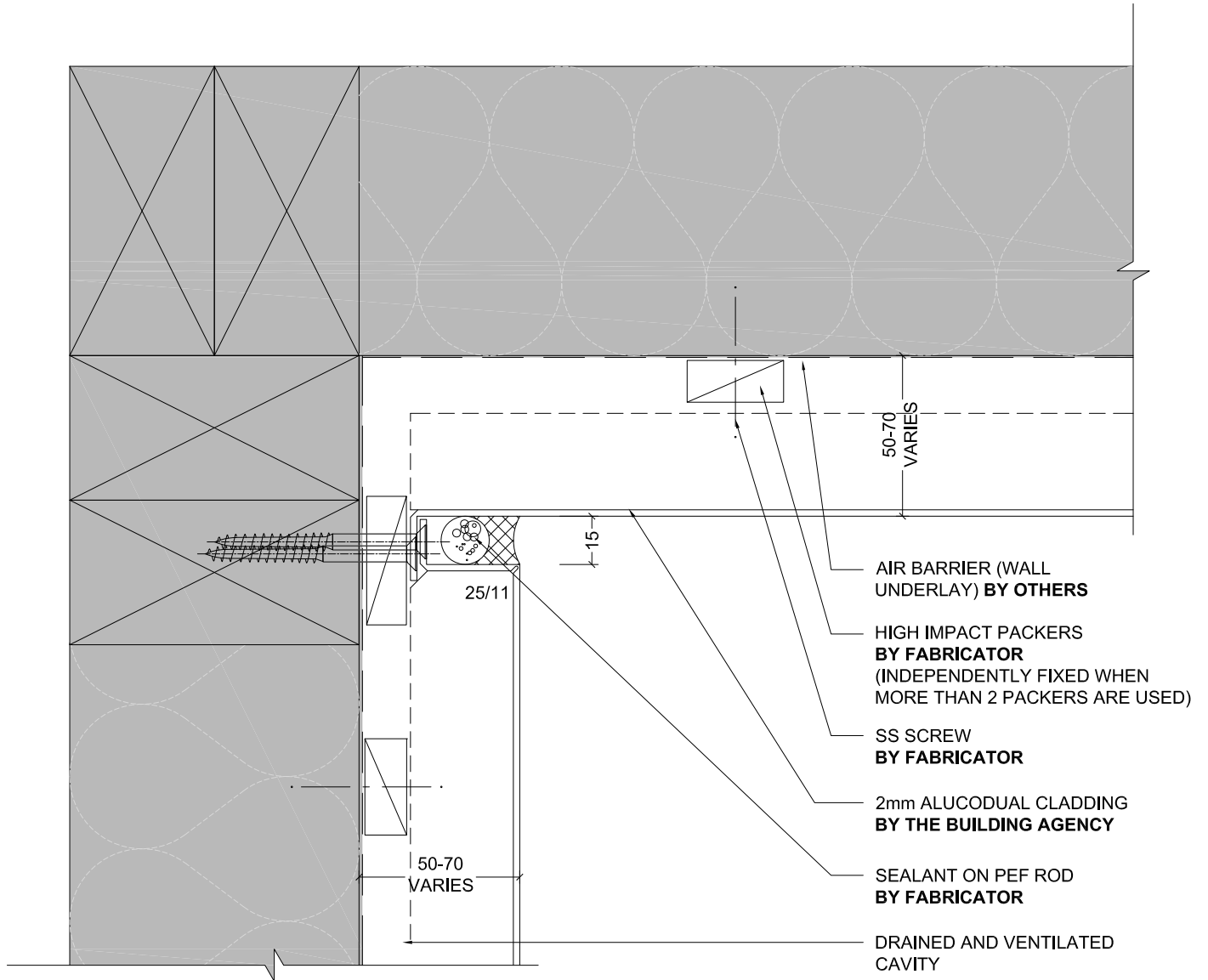
Detail Number \_\_\_\_\_  
Version \_\_\_\_\_  
[v1.0]



MATERIALS • SYSTEMS • SOLUTIONS

# ALUCODUAL

R&R SYSTEM



INTERNAL  
CORNER

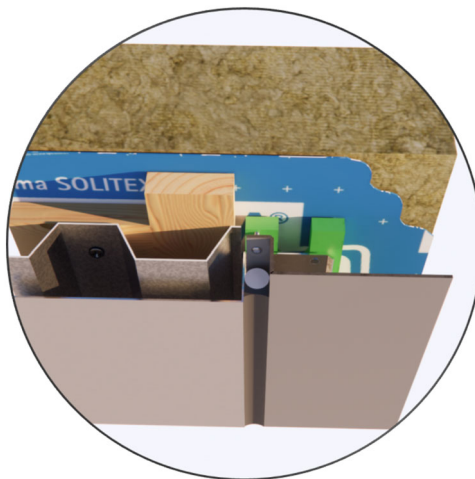
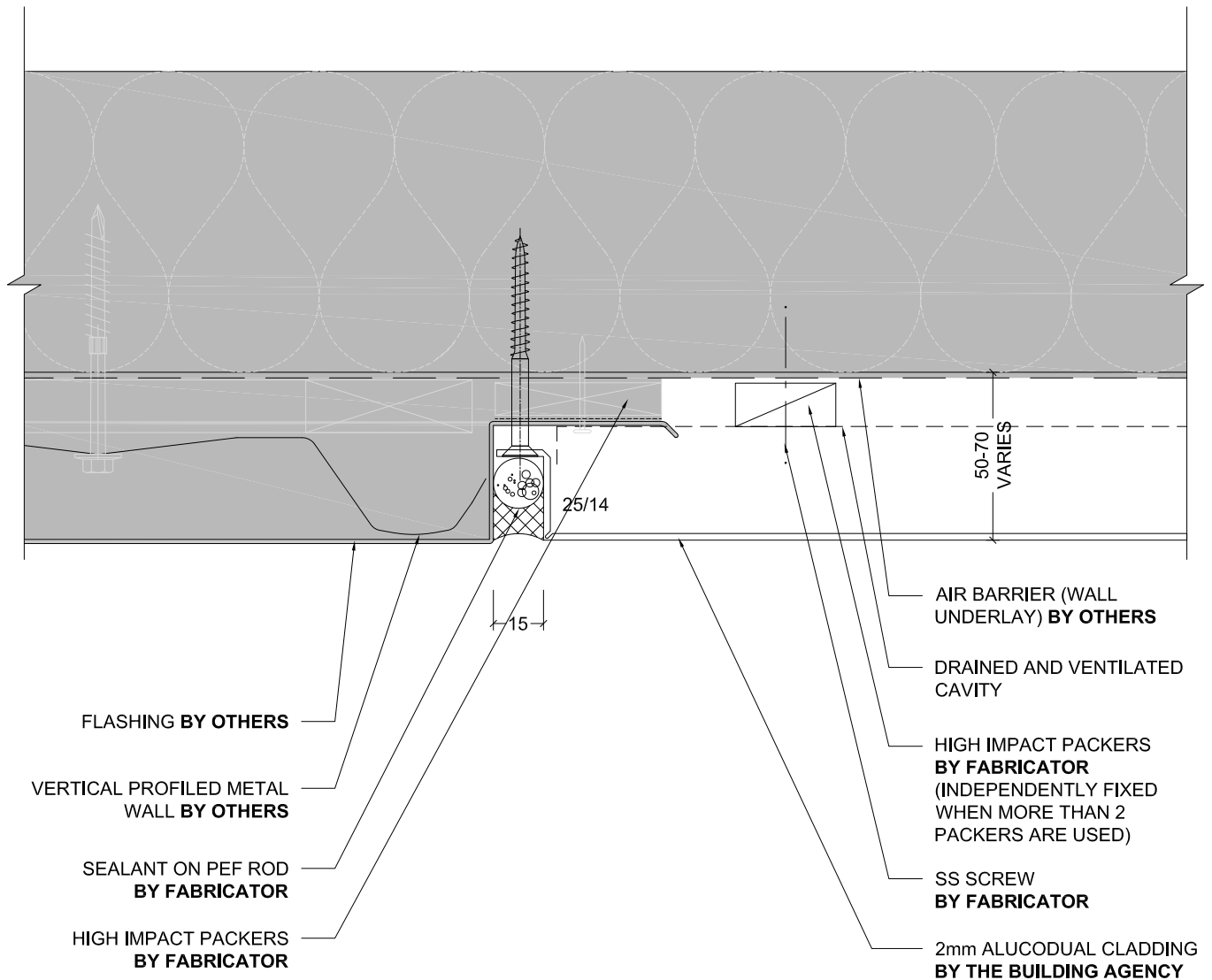
Detail Number \_\_\_\_\_  
Version \_\_\_\_\_  
[v1.0]



MATERIALS • SYSTEMS • SOLUTIONS

# ALUCODUAL

R&R SYSTEM



## WALL JUNCTION OP 1

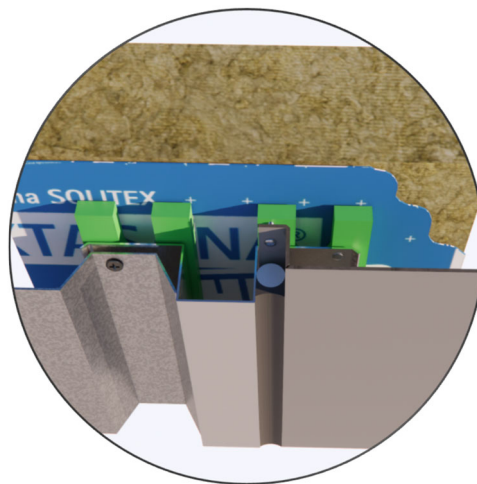
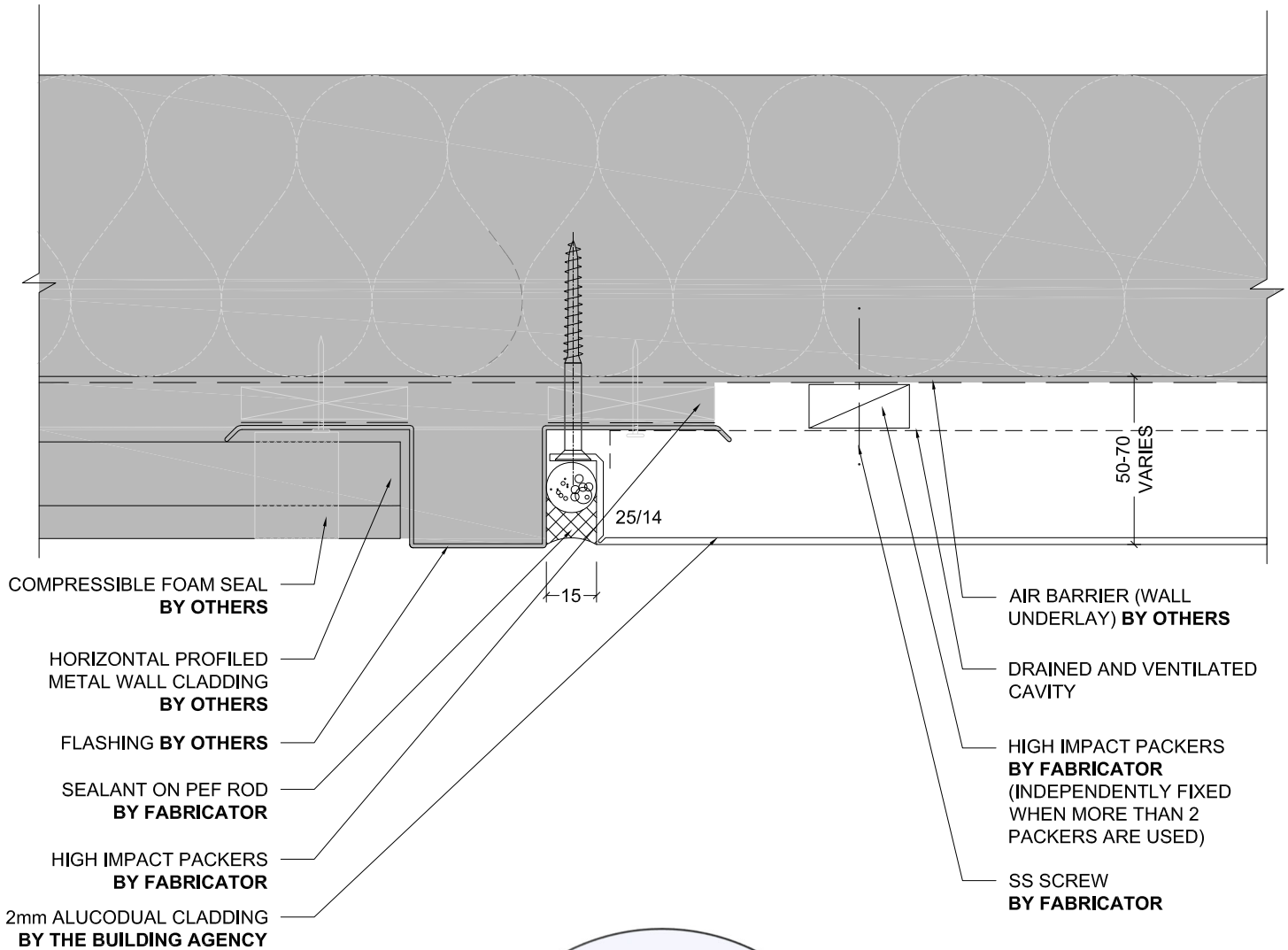
Detail Number \_\_\_\_\_  
Version \_\_\_\_\_  
[v1.0]



MATERIALS • SYSTEMS • SOLUTIONS

# ALUCODUAL

R&R SYSTEM



## WALL JUNCTION OP 2

Detail Number \_\_\_\_\_  
7.1

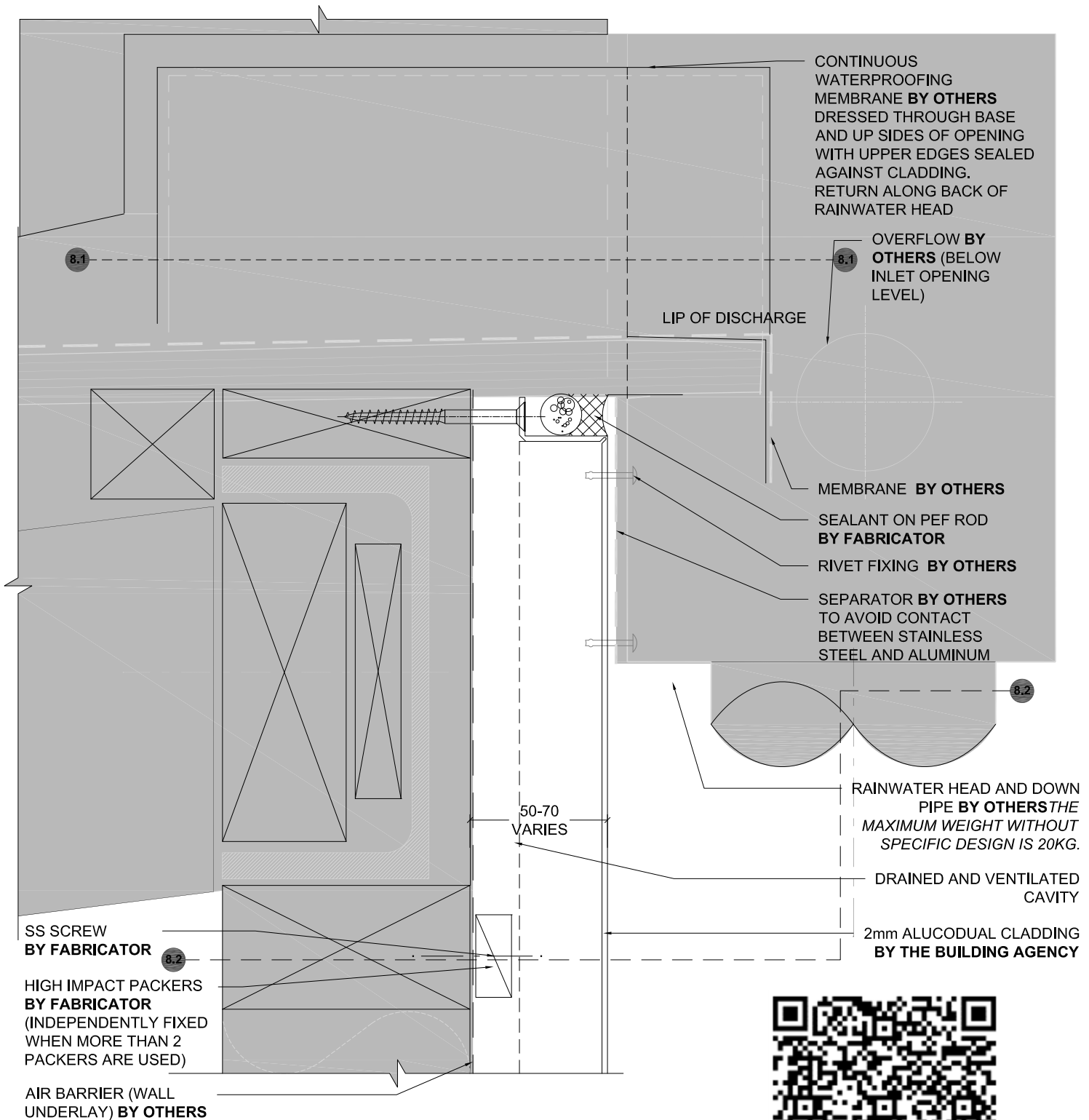
Version \_\_\_\_\_  
[v1.0]



MATERIALS • SYSTEMS • SOLUTIONS

# ALUCODUAL

R&R SYSTEM



NOTE  
TO BE READ WITH SHEET 8.1 & 8.2

## RAIN HEAD / OUTLET THROUGH WALL

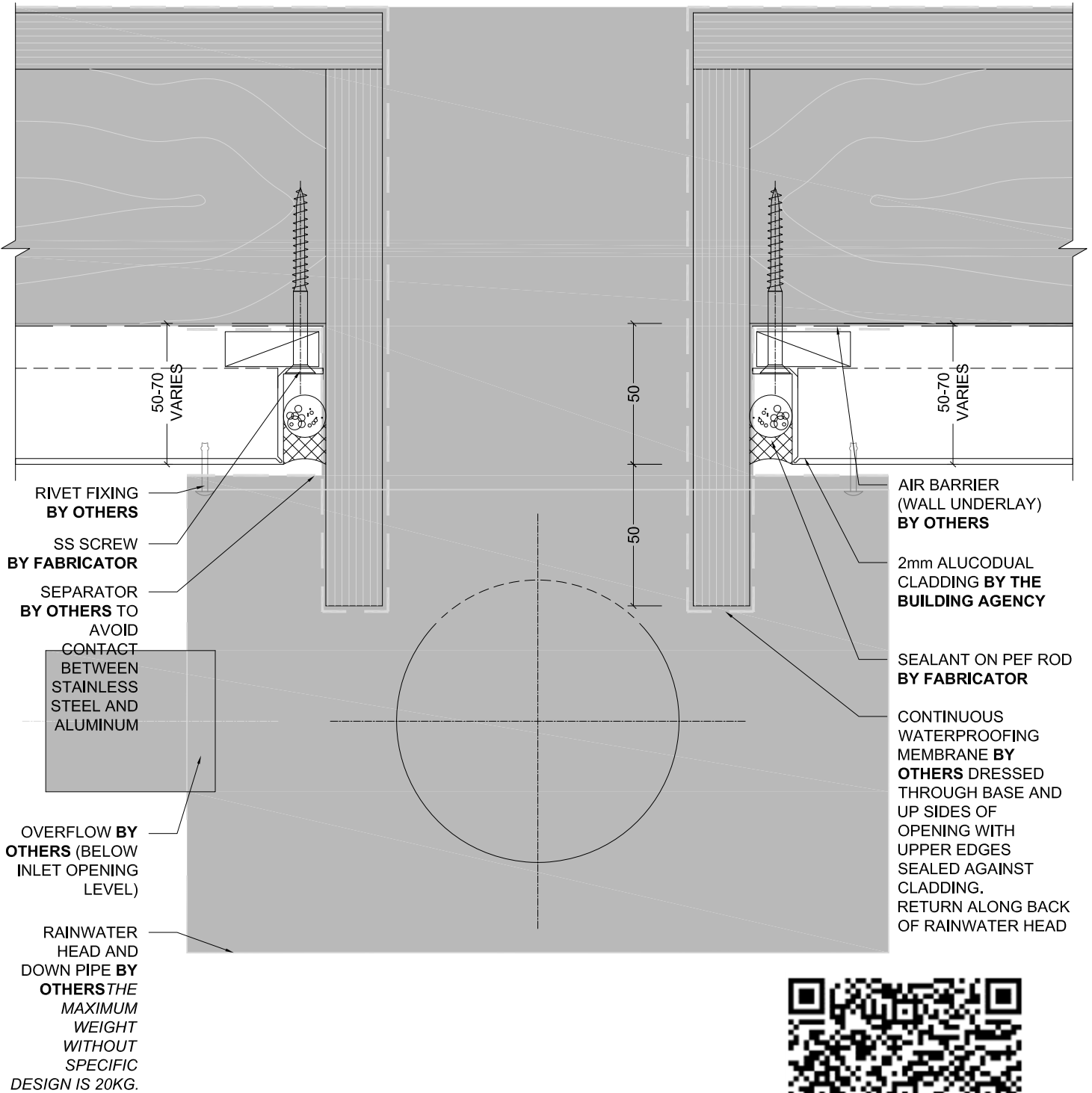
Detail Number \_\_\_\_\_  
Version \_\_\_\_\_  
[v1.0]



MATERIALS • SYSTEMS • SOLUTIONS

# ALUCODUAL

R&R SYSTEM



NOTE  
TO BE READ WITH SHEET 8.0 & 8.2



## RAIN HEAD DETAIL

Detail Number \_\_\_\_\_  
8.1

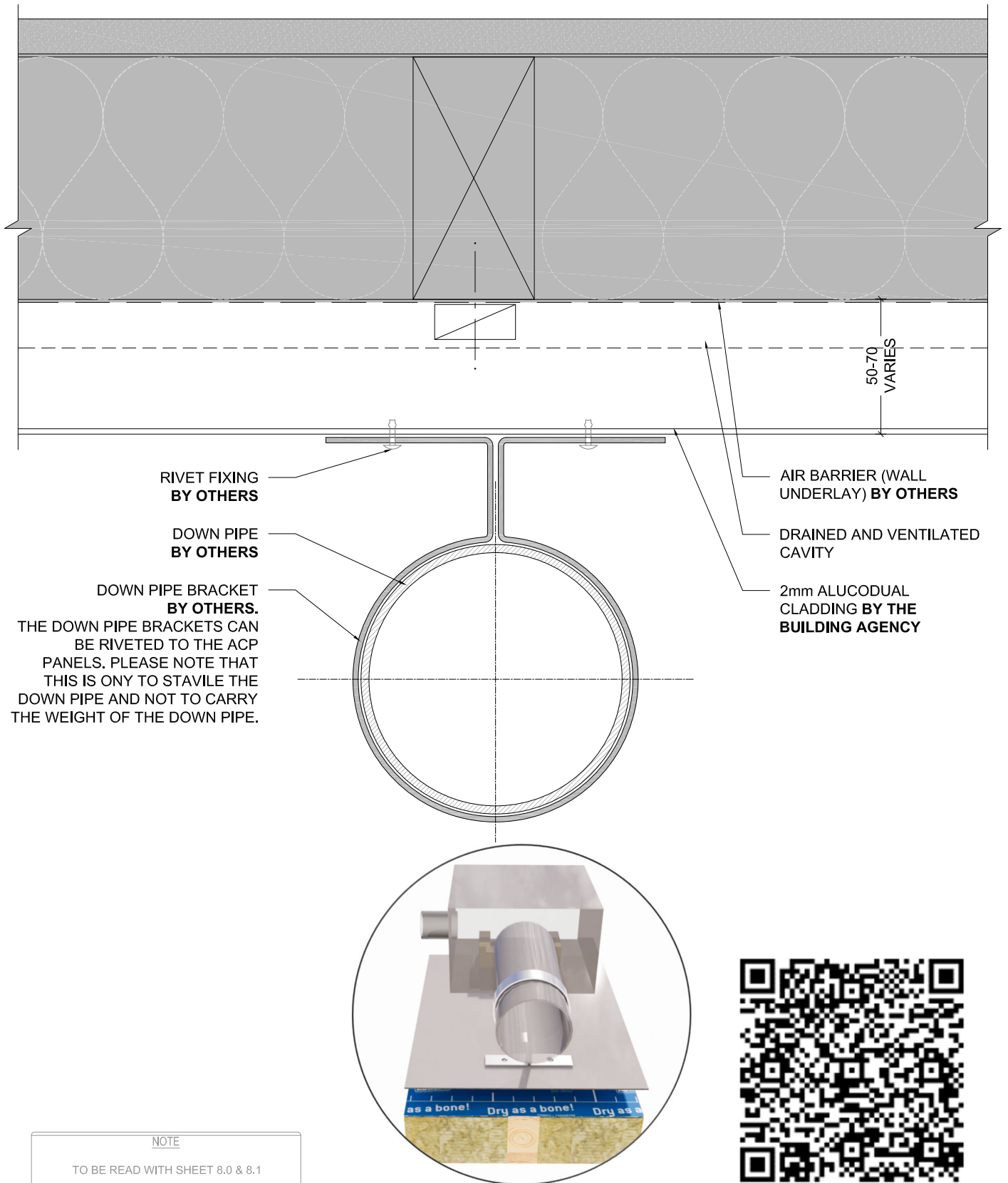
Version \_\_\_\_\_  
[v1.0]



MATERIALS • SYSTEMS • SOLUTIONS

# ALUCODUAL

R&R SYSTEM



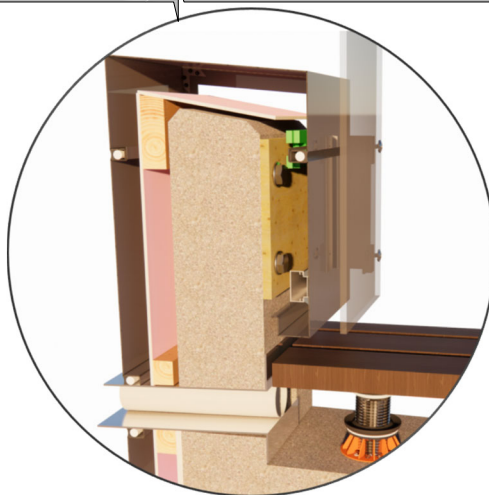
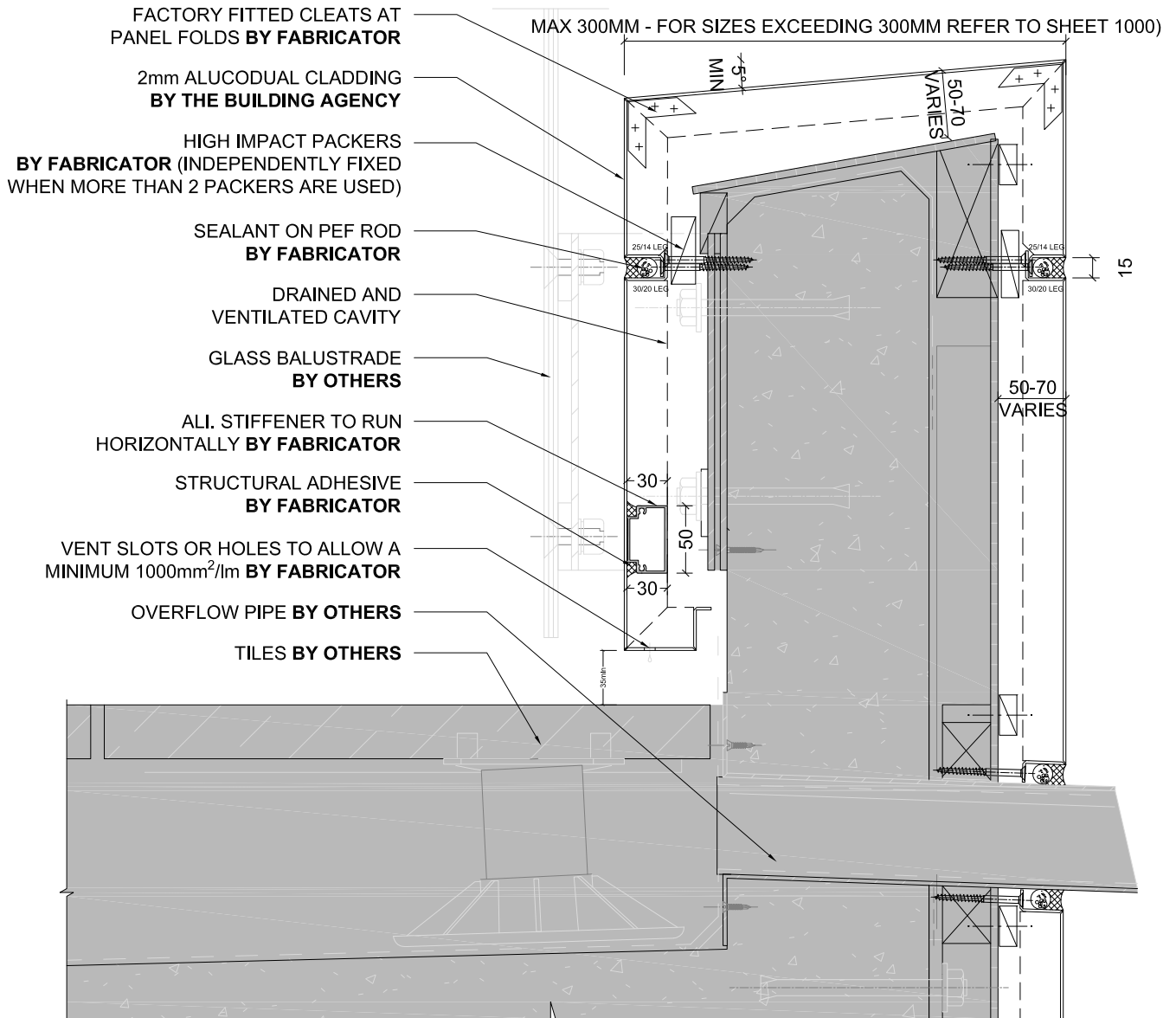
## DOWNPIPE/ ACP FIXING DETAIL

Detail Number \_\_\_\_\_  
Version \_\_\_\_\_  
[v1.0]



MATERIALS • SYSTEMS • SOLUTIONS





**SAMPLE  
BALUSTRADE**

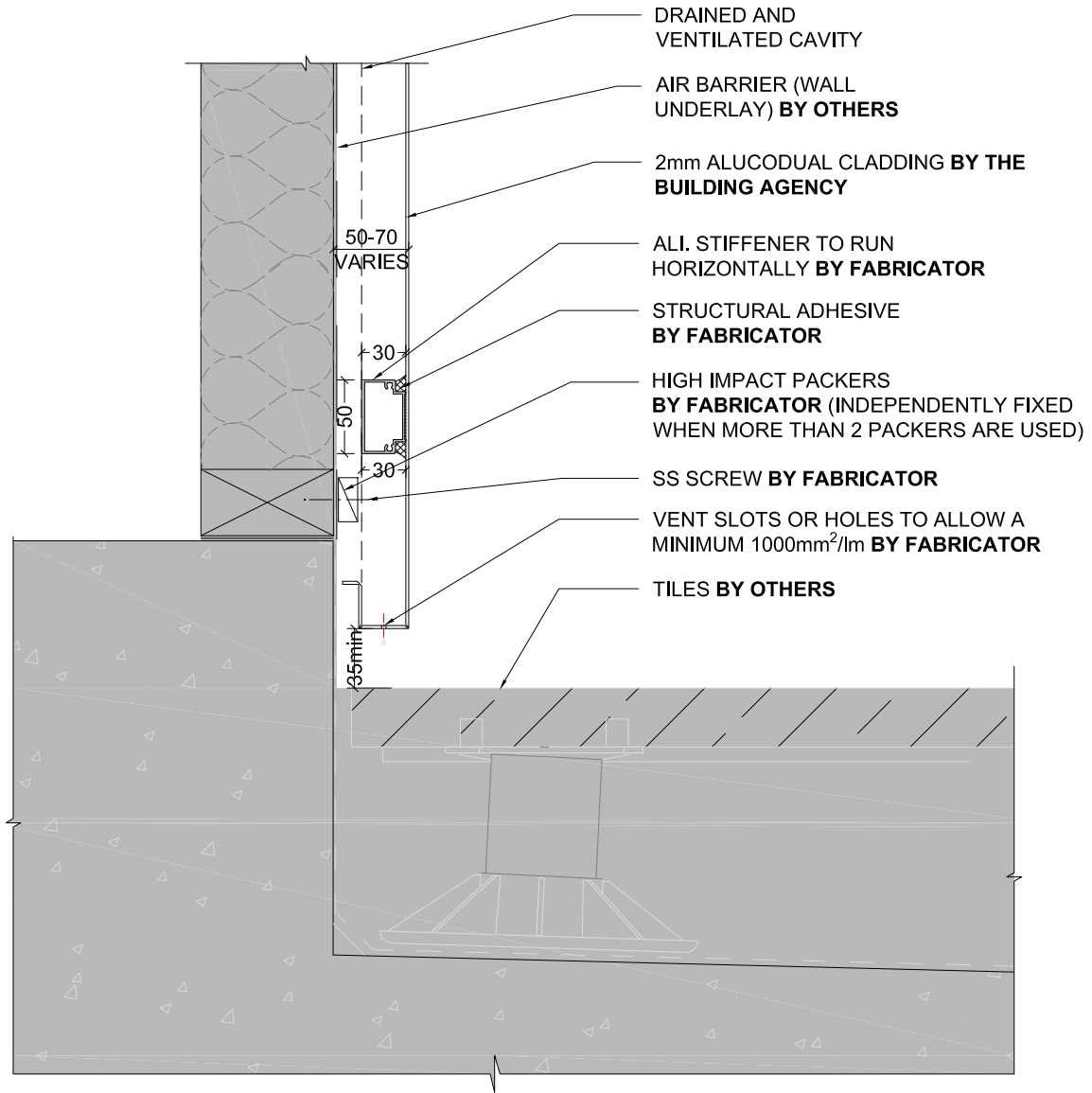
Detail Number \_\_\_\_\_  
Version \_\_\_\_\_  
[v1.0]



**MATERIALS • SYSTEMS • SOLUTIONS**

# ALUCODUAL

R&R SYSTEM



## SAMPLE DECK DETAIL

Detail Number \_\_\_\_\_  
 Version \_\_\_\_\_  
 [v1.0]



MATERIALS • SYSTEMS • SOLUTIONS