



Digital Door Lock

User Guide YDM3109A



PLEASE READ INSTRUCTIONS BEFORE USE.

The functions and design of this product can be changed without prior notice for performance and quality improvement.

INTRODUCTION

Thank you for choosing a Yale Digital Lock.

The new Yale Digital Lock uses the latest technology to make life so much easier.

This user manual enables you to operate the product safely and to its full potential.

Be sure to read this completely before using the Yale Digital Lock product.

Unlock your life!



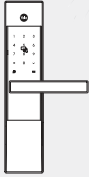
CONTENTS

Safety Precautions	04
Product Features	05
Components Overview	06
Specifications	07
Identification	08
Quick Menu (Normal mode)	10
Creating User Pin code	10
Quick Menu (Advanced mode)	13
Configuration	15
Normal mode	
User Code registration / User Card Key registration	15
Advanced mode	
Change the Master code	16
Register and delete User code	17
Register and delete Card key	18
Register and delete Onetime code	19
Delete All Credentials	20
Lock Setting	21
Register Bluetooth / Yale Home Module (Yale Home app) ...	22
Register and delete Remote control	23
Register and delete Controller	25
How to Use	25
Unlocking Door with Code	25
Unlocking Door with Card Key	25
Locking the door	26
Unlocking the door from the inside	27
Safe Handle Setting	28
Open Door with fake Code	29
External Forced Lock / Internal Forced Lock	30
Automatic / Manual Lock / Volume	31
Break-in Alarm / 3-minute Lock Out Feature / Lost Card Key.....	32
Emergency mechanical key override / Product malfunction	33
Resetting Lock to Factory Default	33
Emergency Power	34
Emergency power supply for discharged batteries	34
Power supply	34

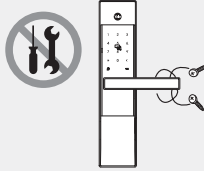
Safety Precautions

Please read this carefully

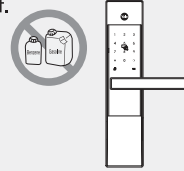
For use on residential entry doors. Not to be used where the internal escutcheon will be exposed to outdoor elements (e.g. on a gate).



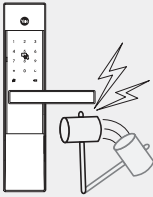
Do not attempt to disassemble the digital door lock by your self. By doing so, you may get an electronic shock and damage the product.



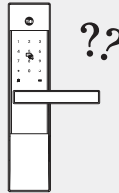
Do not use water and any type of solvent to clean the product such as gasoline or benzene as they can cause damage to electronic circuit, deterioration and or paint peel-off.



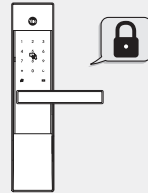
Do not use force with a tool onto the product.



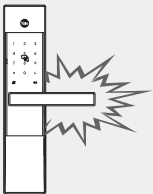
Please keep your Code safely.



Make sure to lock the door tight when you go out.



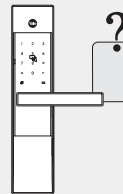
Be careful not to hit the handle as it may cause injuries.



For total peace of mind, please store your back up key in a safe & convenient place after the door installation is complete.



Immediate re-registration of all remaining keys is required to invalidate the lost key.



Caution

Make sure to follow the above instructions to avoid any injuries or damages on the properties .

Product Features

1 Alarmed Door Lock

Yale Digital door lock has a built in damage alarm. If the keypad area is damaged an alarm will sound.

2 Proximity card identification

You can use your ISO 14443 A type RFID card such as credit card or pass card as your card key.

3 Electronic Code System

You can open the door conveniently with Code.
Yale Digital door lock gives you the freedom and convenience of key-free.

4 Emergency power back up

9V battery source is available if your batteries run out.

5 Fake PIN Code

To prevent the Code being exposed.
Yale Digital door lock allows you to enter decoy numbers before or after entering your Code.

6 Auto Locking

The handle automatically disengages on the outside once you have entered your home, preventing anyone from following you.

7 Remote control System (Optional)

Use a Remote control to unlock/Lock your door "remotely".

8 Zwave / Zigbee (Optional)

Use them to connect with Controller.

9 BLE (Optional)

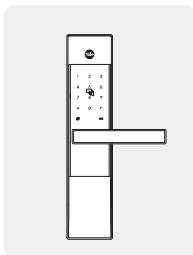
Use it to pair with Smartphone.

Components Overview

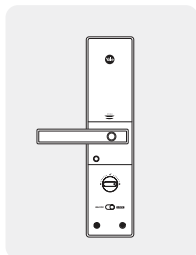
Basic Contents

The contents of this product may be subject to change without notice for performance or quality improvement.

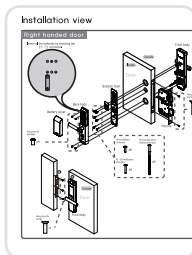
» Basic Contents



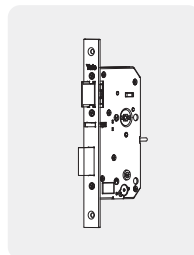
Front (Front Body)



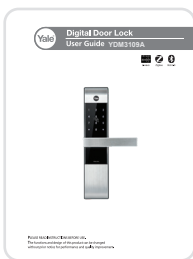
Back (Main Body)



Installation Template



Lock case



Users Guide

4 Tag / Card keys
4 AA Batteries
Emergency Keys
Striker
Screws

» Optional Accessory

- Remote controller
- Remote control module
- Z-wave module
- Zigbee module
- BLE module

Specifications

Specifications

Parts	Specifications	Remarks	
Front (Front Body)	68.6(W) x 306.6(H) x 27(D)(70.6)mm, Zinc die-casting	Operating temperature : -15~55°C (5~131 °F)	
Back (Main Body)	72.8(W) x 306.6(H) x 37.0(D)(80.8)mm, Flame-Retardant ABS, Zinc D/C		
Lever	Zinc die-casting		
Card Key	4ea	Up to 100 keys	
Battery	4EA 1.5V AA alkaline batteries (Operating voltage: 4.5 ~ 6 V)	Last up to 1 year (10 times used a day)	
Lock case	Steel and SUS430		
Option	Remote Control	Wireless	Optional
	Z-wave		
	Zigbee		
	BLE module		

- ※ Battery life may vary depending on temperature, moisture levels, frequency of use and the quality of the batteries.
- ※ Please make sure that all parts are included when purchasing the product.
- ※ Optional products may not be available depending on your country or local dealer.



Packaging of this product can be recycled.



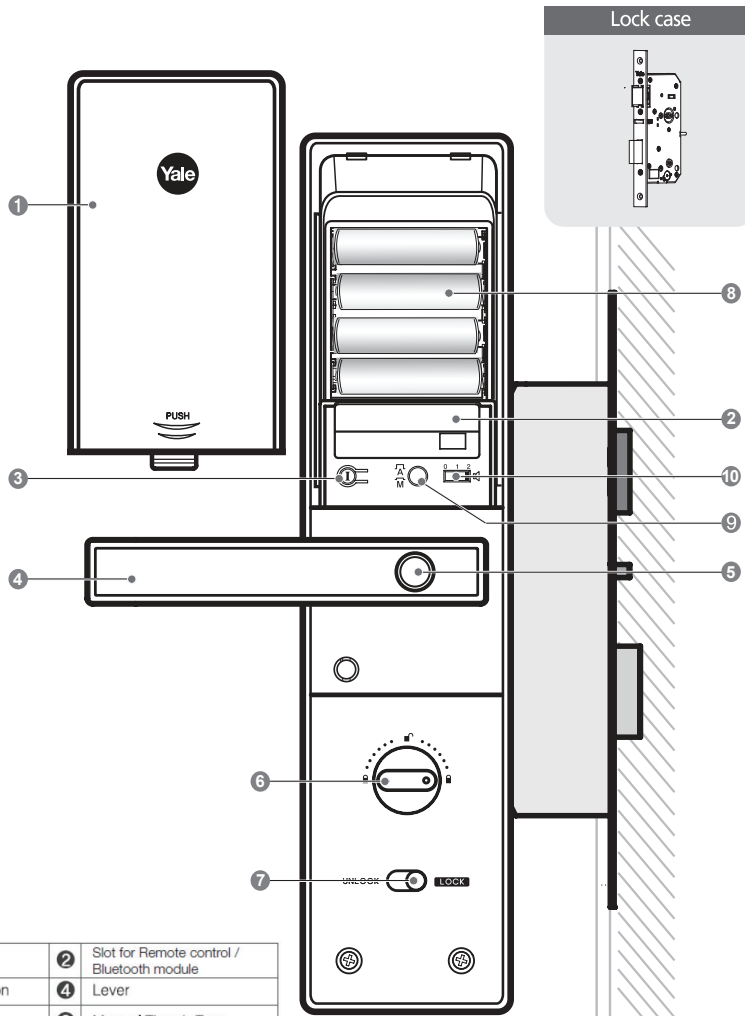
WEEE Note:

Waste electrical products should not be disposed of with household waste. Please recycle where facilities exist. Check your local authority or retailer for recycling advice.



Identification








Main body (Main Body, Installation on the inside of the door)



1	Battery Cover	2	Slot for Remote control / Bluetooth module
3	① Registration button	4	Lever
5	Safe Handle Button	6	Manual Thumb Turn
7	Internal Forced Lock Switch	8	Batteries
9	Auto/Manual Lock Button	10	Volume Control Switch
11	Lock Case	12	Latch Bolt
13	Automatic Locking Sensor	14	Dead Bolt

Quick Menu

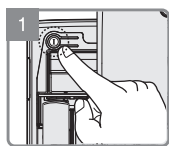
Quick Menu Icon

	Touch the keypad with palm to begin and end actions.	M PIN	Enter Master Code(4~10digits).
	Click the indicated number.	U PIN	Enter User Code(4~10digits).
	Press [*] button on the keypad.	V PIN	Enter Visitor Code(Only 4digits).
	Press [#] button on the keypad.	O PIN	Enter Onetime Code (Only 4digits).
	Press I (Registration)button inside of the battery cover.		Enter User Card Key. (Up to 40ea)
	Repeat operation using settings indicated.	U N	User Slot Number should be 2 digits.

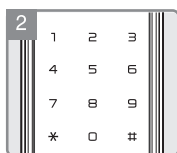
Creating User Pin code

Creating a user pin code must be performed upon Installation or after resetting the lock to factory default. Programming and use of lock is not possible until this step has been successfully completed.

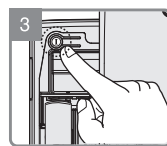
I **U** PIN User Code Registration(4 ~10) - Only One User Code **I** Complete



Press **I** button.



Enter New User Code.



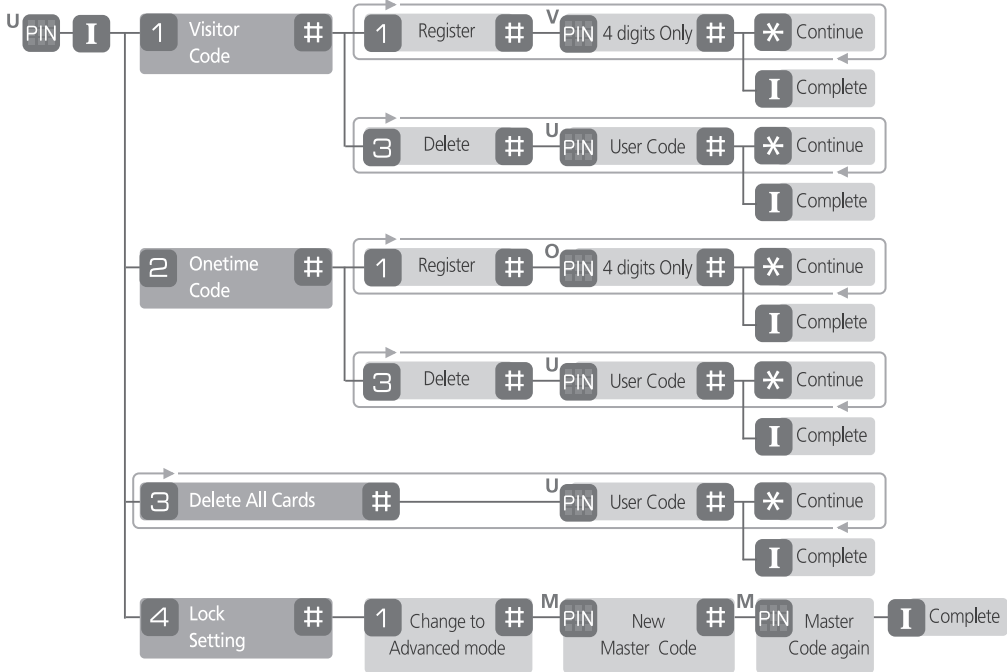
Press **I** button to complete.

Quick Menu

Normal mode

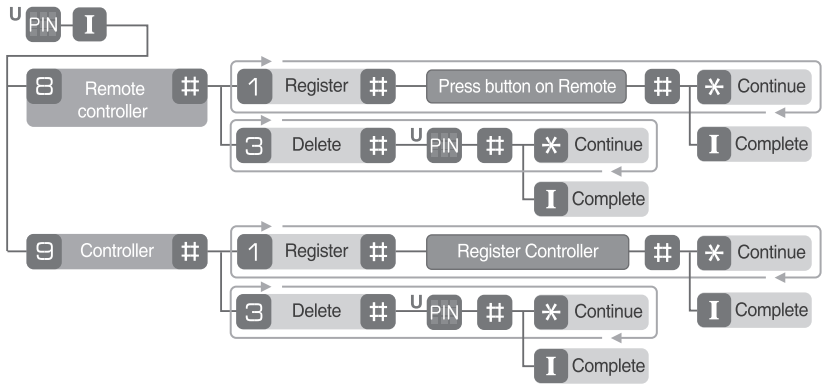
Quick Menu (Normal mode)

- I** ^U PIN User Code Registration(4 -10) - Only One User Code **I** Complete
- I** ^{CARD} User Card Key Registration - Up to 100ea Repeat if required **I** Complete



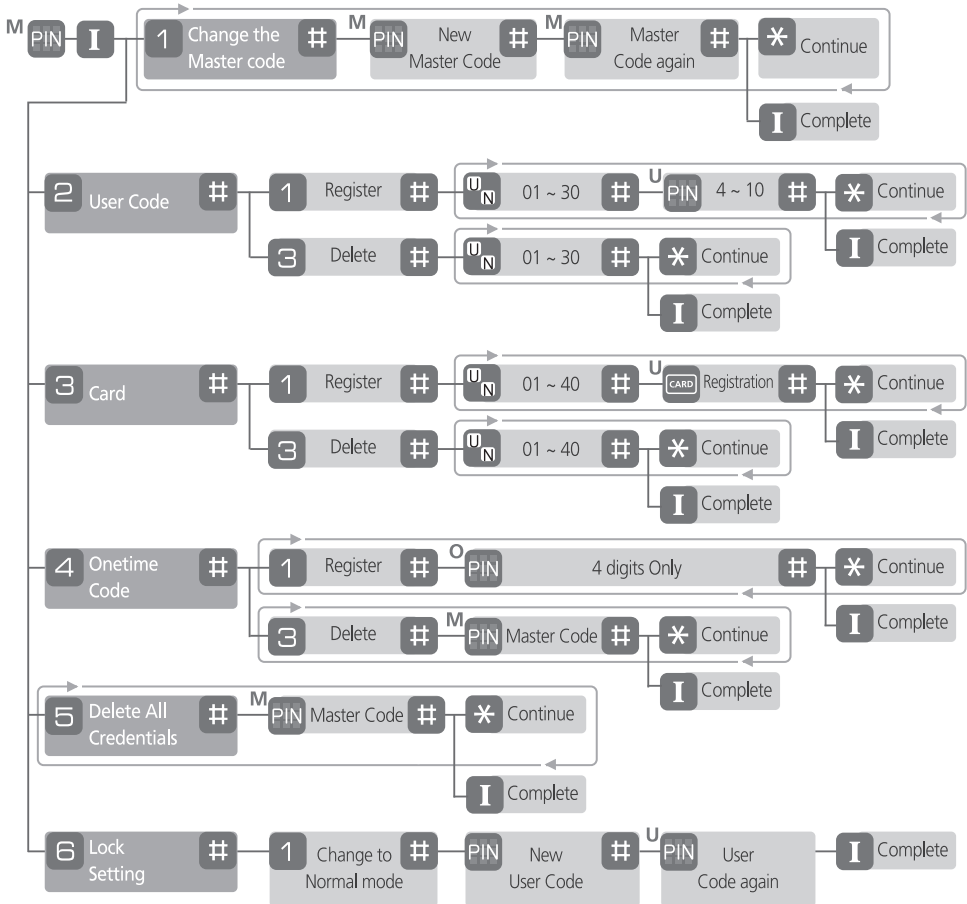
Quick Menu

Normal mode



Quick Menu

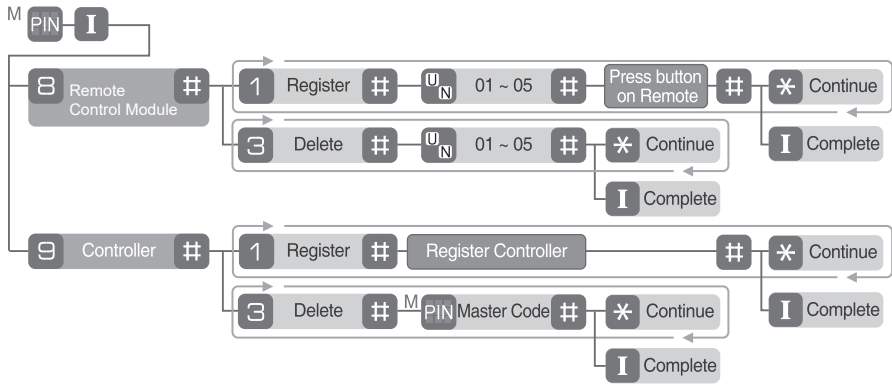
Advanced mode



ENGLISH

Quick Menu

Advanced mode



Bluetooth / Yale Home Module (Yale Home app)

Registration **M** ⓘ **7** # Set up a new device in the app

Note

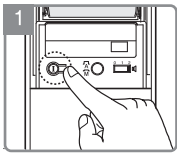
When the Yale Home Module and Yale Bridge are registered to your lock, the PIN codes and Card / Tag keys must be registered using the Yale Home app.

Configuration

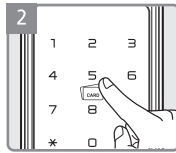
Normal mode

User Code Registration (4 ~10 digits)

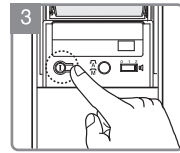
I **U** **PIN** User Code Registration(4 ~10) - Only One User Code **I** Complete



Press **I** button.



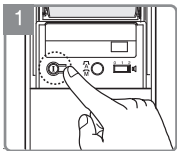
Enter New User Code.



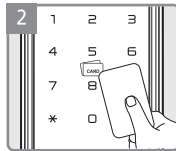
Press **I** button to complete.

User Card Key Registration Up to 100ea

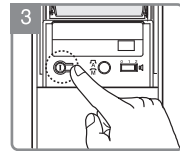
I **U** **CARD** User Card Key Registration - Up to 40ea **Repeat if required** **I** Complete



Press **I** button.



Contact all Card Keys you wish to register on Card Key reader one by one.



Press **I** button to complete.

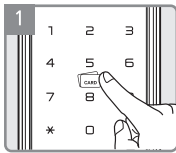
⚠ Caution

- Make sure to leave the door open when registering User Code and Card Keys because you may accidentally lock the door while trying to register or change a credential.
- The previously registered User Code will automatically be deleted when a new credential is registered.
- It is recommended to change User Code on a regular basis.
- It is impossible to make same number for Master code / Visitor code / Onetime code / User code.

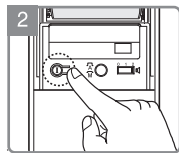
Configuration

Advanced mode

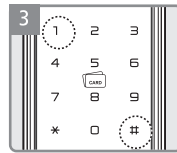
Change the Master code



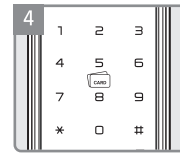
Enter the Master Code.



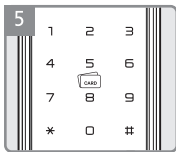
Press [I] button.



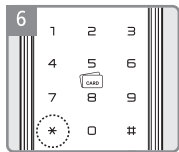
Enter [1], [#] buttons to change the Master code.



Enter New Master Code and [#] button.

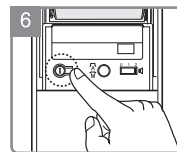


Again enter the Master Code and [#] button.



Press [*] button to continue.

OR

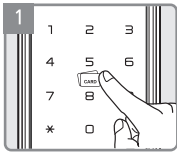
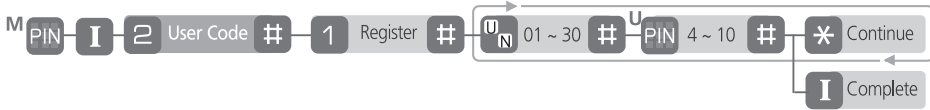


Press [I] button to complete.

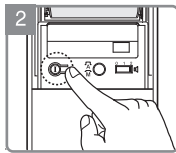
Configuration

Advanced mode

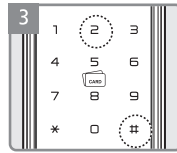
Register User Code



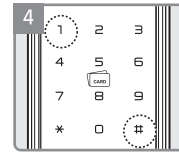
Enter the Master Code.



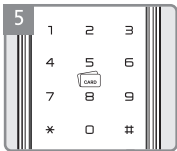
Press **I** button.



Enter [2], [#] buttons.



Enter [1], [#] buttons to register User code.



Enter the User number (01~30) and [#] button.

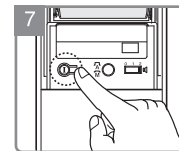


Enter the User Code (4 ~ 10 digits) and [#] button.



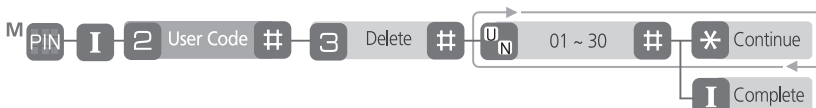
Press [*] button to continue.

OR



Press **I** button to complete.

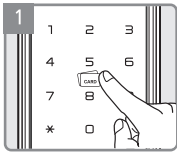
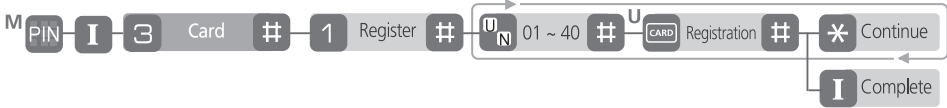
Delete User code



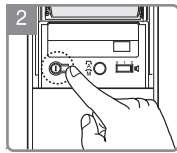
Configuration

Advanced mode

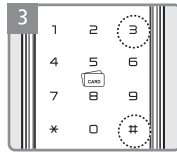
Register Card



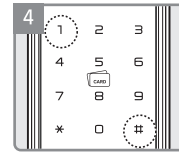
Enter the Master Code.



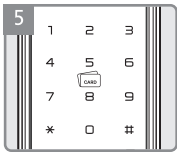
Press ① button.



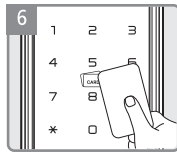
Enter [3], [#] buttons.



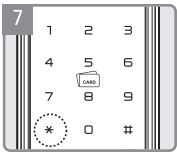
Enter [1], [#] buttons to register Card.



Enter the User number (01~40) and [#] button.

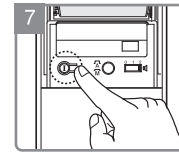


Contact Card Key you wish to register on Card Key reader and [#] button.



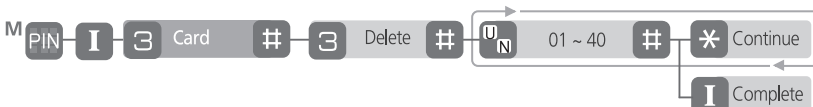
Press [*] button to continue.

OR



Press ① button to complete.

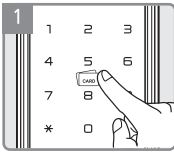
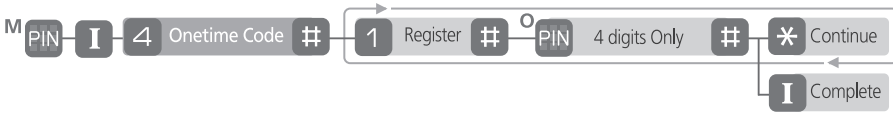
Delete Card



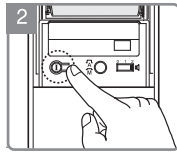
Configuration

Advanced mode

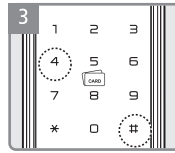
Register Onetime Code



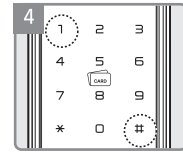
Enter the Master Code.



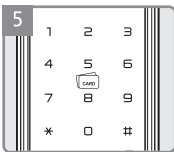
Press I button.



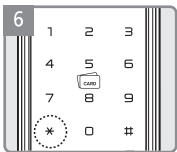
Enter [4], [#] buttons.



Enter [1], [#] buttons to register Onetime Code.

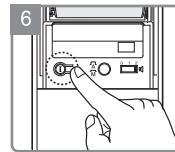


Enter Onetime Code (4 digits) and [#] button.



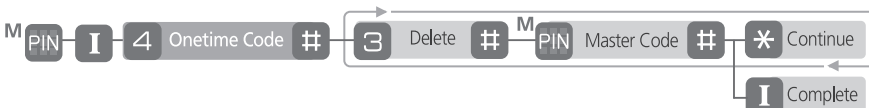
Press [*] button to continue.

OR



Press I button to complete.

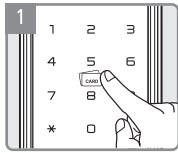
Delete Onetime Code



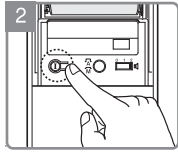
Configuration

Advanced mode

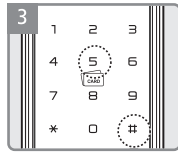
Delete All Credentials



Enter the Master Code.



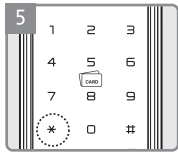
Press **1** button.



Enter [5], [#] buttons.

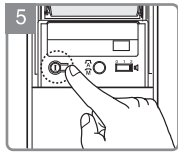


Enter the Master Code and [#] buttons.



Press [*] button to continue.

OR

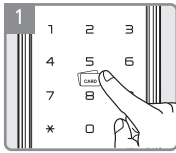
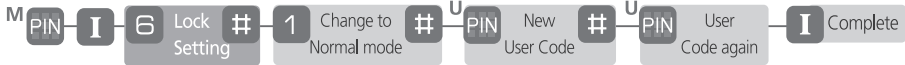


Press **1** button to complete.

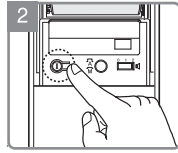
Configuration

Advanced mode

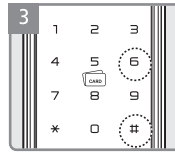
Lock Setting



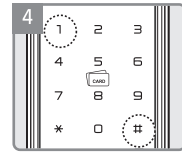
Enter the Master Code.



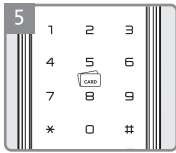
Press **I** button.



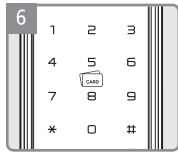
Enter [6], [#] buttons.



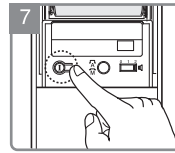
Enter [1], [#] buttons to change to Normal mode.



Enter the New User Code and [#] button.



Again enter the User Code .



Press **I** button to complete.

ENGLISH

Configuration

Advanced mode

Register Bluetooth / Yale Access Module (Yale Access)

Bluetooth / Yale Home Module (Yale Home app)				
Registration	M <small>PIN CODE</small>	ⓘ	7	#
				Set up a new device in the app

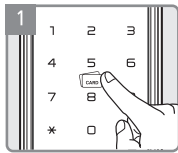
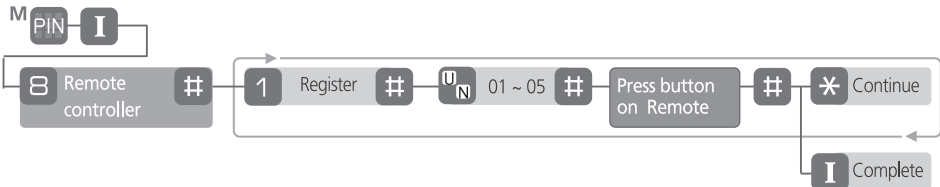
Note

When the Yale Access Module and Yale Bridge are registered to your lock, the PIN codes and Card / Tag keys must be registered using the Yale app.

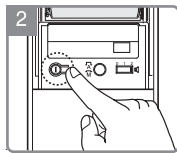
Configuration

Advanced mode

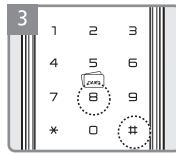
Register Remote control



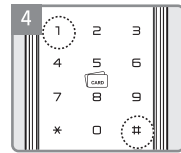
Enter the Master Code.



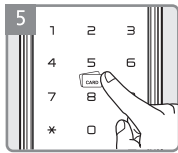
Press **I** button.



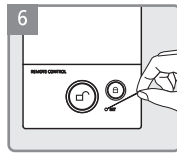
Enter [#], [#] buttons.



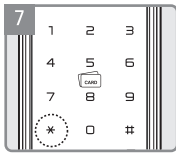
Enter [1], [#] buttons to register Remote control.



Enter the User Number (01~05) and [#] button.

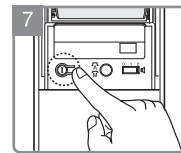


Press registration button on Remote controller followed by press [#] button to complete after beep sound from digital door lock.



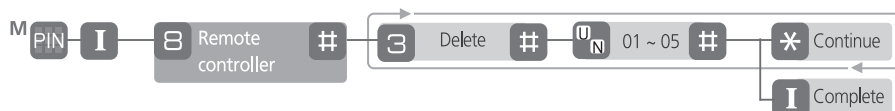
Press [*] button to continue.

OR



Press **I** button to complete.

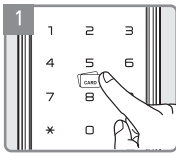
Delete Remote control



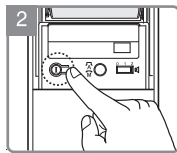
Configuration

Advanced mode

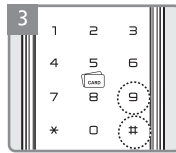
Register Controller



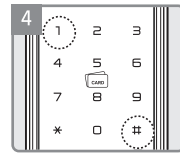
Enter the Master Code.



Press **1** button.



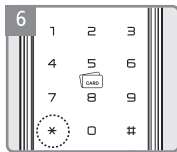
Enter [9], [#] buttons.



Enter [1], [#] buttons to register controller.

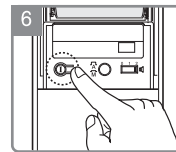


Register Controller followed by press [#] button to complete after beep sound from digital door lock



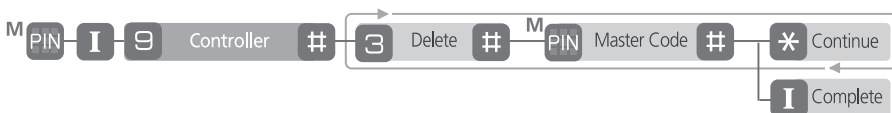
Press [*] button to continue.

OR



Press **1** button to complete.

Delete Controller

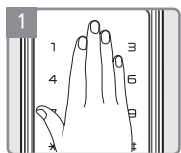


How to Use

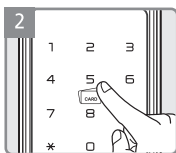
Normal mode

Advanced mode

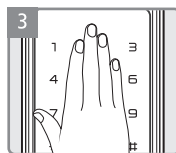
Unlocking Door with Code



Touch the keypad of the Front Body with your palm.

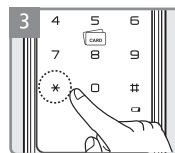


Enter the registered Code on the keypad.



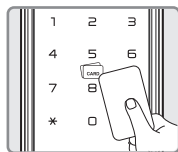
Touch the keypad of the Front Body with your palm.

OR



Enter the [*] button.

Unlocking Door with Card / Tag key



Contact registered Card Key.

Check if the door opens!



Make sure to examine if the door opens normally with the registered User Code after the registration is complete.

How to Use

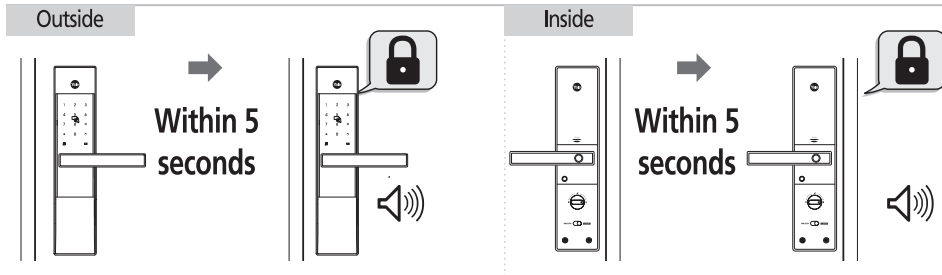
Normal mode

Advanced mode

Locking the door

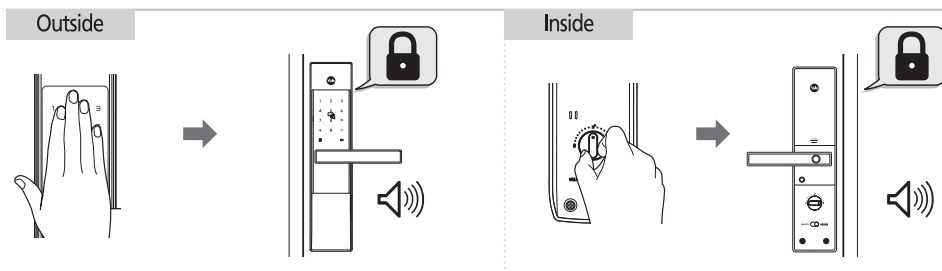
※ Please check Automatic / Manual Lock Mode

» Automatic Lock Mode (Default Setting)



When set on automatic lock mode, the automatic lock sensor detects the door closing and locks the door automatically within 5 seconds.

» Manual Lock Mode



The door locks when touching the keypad with the palm.

Use Thumb turn knob on the main body.

⚠ Caution

- As the automatic lock function does not work in manual lock mode, make sure to check that the door is securely locked when leaving the premises.

How to Use

Normal mode

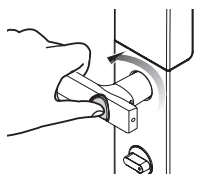
Advanced mode

Unlocking the door from the inside

Safe Handle Setting is not fixed as a default .

» To Open Door when the safe handle button is released.

Keep pushing the safe handle button.
And then, press and open the door.
The safe handle button is found on the inner handle.



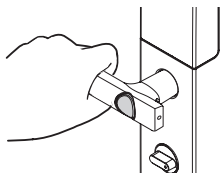
(Closed)



(Open)

» To Open Door when the safe handle button is fixed.

Press the inner handle and
open the door.



(Closed)



(Open)

Important

- Make sure to fully familiarize yourself with the operation of the Safe Handle in preparation for emergencies.

How to Use

Normal mode

Advanced mode

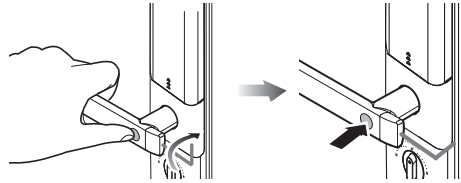
Safe Handle Setting

The technology to prevent a forced attempt to drill a hole in the door and

› To Release Safe Handle Setting

Open the battery cover and take out a hex wrench.

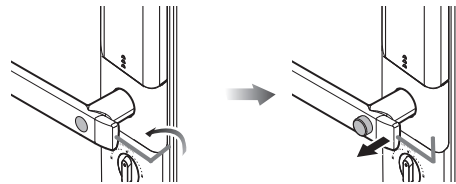
Keep pressing the Safe Handle button. Turn the set bolt found in next to the handle to Close side.



› To Set Safe Handle

Open the battery cover and take out a hex wrench.

Turn the set bolt found in next to the handle to Open side until the Safe Handle button comes out.



ENGLISH

Note

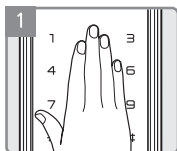
- Be careful that the fixing screw is not separated during the safe handle setting.

How to Use

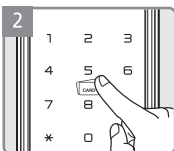
Normal mode

Opening Door with fake Code (Only Normal mode)

This is an extra security measure to prevent your Code being accidentally exposed.
It is only available for your User and Visitor Code ; not for use with the Onetime Code.



Touch the keypad of the Front Body with your palm.

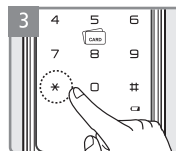


Method ①

Enter the →

Method ②

Enter the →



Press [*] button to confirm.
or Touch the keypad with palm to confirm

How to Use

Normal mode

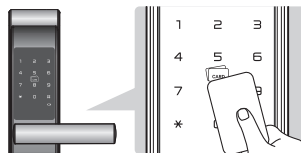
Advanced mode

External Forced Lock

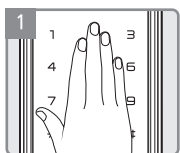
When External Forced Lock mode is activated the Alarm will go off if someone press the handle to exit the property.

» External Forced Lock Setting - CARD

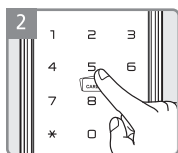
Contact Card Key on [Card Key reader] for 5 seconds until you hear 3 beeps.



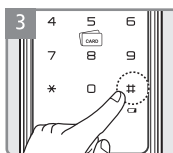
» External Forced Lock Setting - User Code (Except Onetime Code)



1 Touch the keypad of the Front Body with your palm.



2 Enter registered User Code on the keypad.



3 Enter [#] button for 5 seconds. (The beep sound sets off for 3 times.)

Internal Forced Lock

When internal forced lock mode is activated the keypad is not functioning.

A warning beep sound will go off if anyone attempts to access using Code or the Card Key from outside.



Note

- If you open a door with the handle from inside in External Forced Lock, the alarm will sound.
- Deactivate External Forced Lock by entering User Code or touching Card Key reader with registered Card Key.
- Internal Forced Lock is only activated when door is closed.

How to Use


Normal mode

Advanced mode


Automatic / Manual Lock

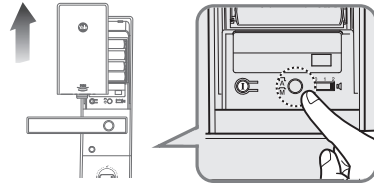
Default Automatic lock

Automatic Lock Setting

 Main body Automatic/Manual Lock button released to set Auto

Manual Lock Setting

 Main body Automatic/Manual Lock button pressed to set Manual

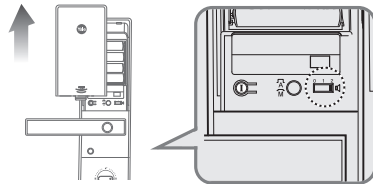


Volume

Default High



The operation sound volume will be adjusted according to the Volume Switch Setting.
(2 : High / 1: Low / 0 : Mute)



Note

- Even though the operation sound is set to 'Mute', the error and alarm will sound.

How to Use

Normal mode

Advanced mode

Break-in Alarm

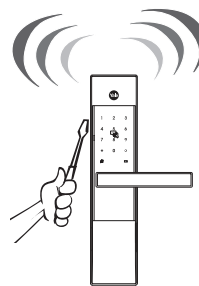
Break-in Alarm : When the front body is separated from the door, the damage alarm will sound.

To turn off Alarm

Method ① Enter the registered Code.

Method ② Press the interior ① button for 5 seconds.

Method ③ Touch the registered Card Key.



3-minute Lock Out Feature

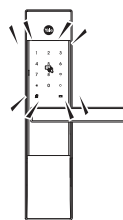
During the 3-minute Lock Out mode, the lock will shut down and not allow operation.

After five(5) unsuccessful attempts at entering a valid code or Card key, 3-minute Lock Out mode is activated.

To Release 3-minute Lock Out

Method ① Press ① button.

Method ② Depress inside lever handle.

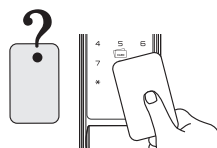


Lost card key

If you lose your card, rest of card keys must be re-registered to invalidate missing one.
(It's only valid in Normal mode)



Lost card key



Re-registering card key

Note

Enter the Code in case you lose the card key or you are not carrying it.

※ It is a user's liability to break the lock because the user did not register any Code.

When the Yale Home Module and Yale Bridge are registered to your lock, the PIN codes and Card / Tag keys must be registered using the Yale Home app.

How to Use

Normal mode

Advanced mode

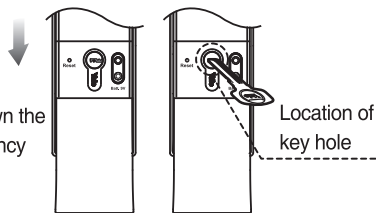
Emergency mechanical key override

Operate the lock with the mechanical key when there is a problem with the lock.

Such as :

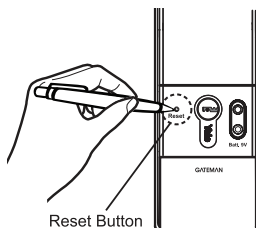
- Forgotten User Code
- Electronic malfunction

Pull down the emergency cover



Product malfunction

Press reset button located in the left of [emergency power terminal] with a pin and try again with the key or the security code. If it still does not work, call for after-sales service.

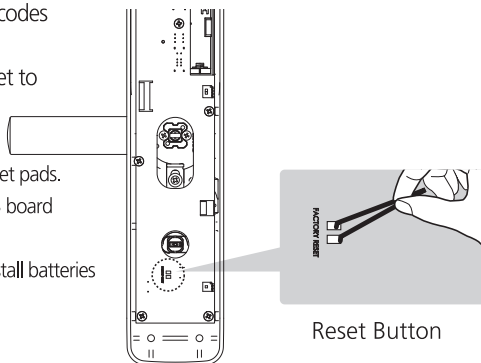


Resetting Lock to Factory Default

When lock is reset to factory defaults all user codes (including the Master Code*) are deleted and all programming features are reset to original default settings (see below).

1. Remove the battery cover and batteries.
2. Remove the interior escutcheon to access the reset pads.
3. The reset pads are located on bottom of the PCB board (See image)
4. While pressing the reset pads with tweezers, reinstall batteries and release reset pads with tweezers.
5. Replace battery cover.

Upon reset, the Master Code creation is the only option available and must be performed prior to any other programming of the lock.

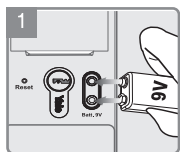


Emergency Power

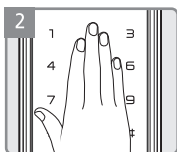
Emergency power supply for discharged batteries

In case the batteries are dead, you can open the door by using 9V battery as shown.

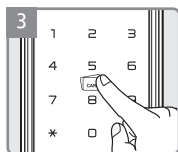
» To supply emergency power



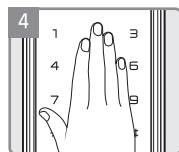
Place the 9V battery onto the emergency power supply terminal.



Touch the keypad with your palm.



Enter the registered Code on the keypad.

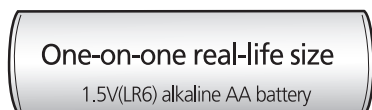


Touch the keypad with palm or Press [*] button to confirm and replace the batteries.

Power supply

1 Expiry period

The product uses four 1.5V alkaline AA batteries. They may sustain 1 year if used 10 times a day. (Users are advised to use authentic alkaline batteries.)

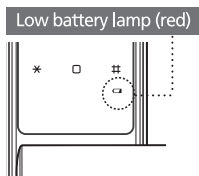


2 Low battery alarm

You must replace all 4 batteries in the following cases:

- * The Low Battery LED on keypad flickers red.
- * When low battery notification message is played.

RISK OF EXPLOSION IF BATTERY IS REPLACED BY AN INCORRECT TYPE. DISPOSE OF USED BATTERIES ACCORDING TO THE NATIONAL CODE OR RECYCLING PROGRAM



Note

- The battery life varies according to ambient temperature, humidity, the frequency of use, and the quality of the battery.
- Do not use rechargeable batteries. Only alkaline batteries are recommended.

