



Penetration Seals

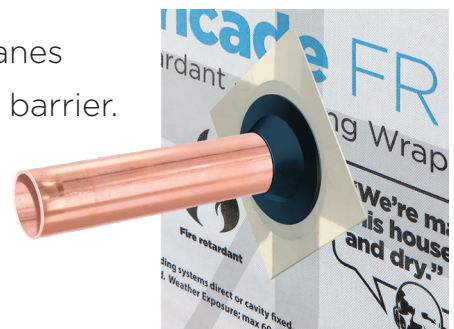
Airtight Solution for Round Penetrations



Masons Penetration Seals are air seal flashings designed for cavity construction where pipes or wires penetrate building cladding and pass through the air seal membranes such as synthetic building wrap, or a flexible or rigid air barrier.

APPLICATION

- Compatible with all vertical underlays
- Trim to size – always a secure fit
- Two sizes cover penetrations from 1mm to 170mm (1mm-75mm. 80mm-170mm)
- May be used with all flexible or rigid air barriers or synthetic flexible wall underlays
- Meets the requirements of the NZBC E2/AS1. To view the appraisal, go to www.masons.nz
- May be exposed for up to 90 days
- Easy installation
- Affordable – great value for money
- Individually hang sell packaged



Penetration Seals Product Codes	Masons Code
Penetration Seal – 1-75mm	PSEAL75
Penetration Seal – 80-170mm	PSEAL170

TECHNICAL DATA SHEET

Masons range of pipe Penetration Seals provide an internal wall flashing system for pipes that penetrate through a drained and ventilated cladding system.

Penetration Seal maintains the integrity of the air seal in the cladding cavity. The pipe Penetration Seal assists the external rain screen of a cladding system to maintain weather tightness.

Masons Penetration Seals have a flexible synthetic rubber nozzle (EPDM) that can be cut to fit a standard range of pipes or wiring. The pipe Penetration Seal comes in sizes to cater for pipes wires or round conduits from 1mm to 170mm diameter. The EPDM nozzle of the pipe seal is trimmed to fit the service pipe or wire size. The carrier is comprised of thin (1mm or less thick) flexible woven water proof synthetic flashing material coated with pressure sensitive adhesive. Masons Penetration Seals have been assessed and meet the requirements of the NZ Building Code (NZBC) per the clauses listed below.**

Standard	Grade
B2 Durability. Provides a service life equal to the façade cladding which is at least 15 years and up to 50 years for a brick veneer cladding.	Pass
E2 External Moisture. When used as part of a drained and ventilated cavity wall cladding system these seals will contribute to meeting the requirements of NZBC Clause E2.	Pass
F2 Hazardous Building Materials. Meets the requirements of NZBC Clause F2.	Pass
Can be exposed for up to 90 days	Pass

** Appraised by Les Boulton and Associates Report 191235: Visit www.masons.nz to view the full appraisal.

INSTALLATION INSTRUCTIONS

- Measure the pipe to be flashed and choose the appropriate sized P Seal.
- Using the markings on the nozzle. Trim slightly smaller than the diameter of the pipe for a snug fit.
- Ensure surface receiving the P Seal is clean and dry.
- Slide P Seal over penetration until adjacent to the surface. Don't force or stress the flashing. Re-trim if too tight.
- Orient the flashing diamond fashion (45°). Remove the backing paper and press firmly to smooth out any wrinkles. It will stick aggressively and repositioning will not be possible
- Always fit the P Seals at 45° to assist moisture run off. For a firm adhesion, ensure wrinkles are smoothed out well with a plastic scraper..



Available in 2 Handy Sizes

Our Penetration Seals fit any round penetration between 1mm and 170mm. Simply trim to size to ensure a secure fit.

